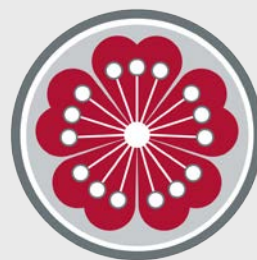




WASHINGTON STATE UNIVERSITY
EXTENSION

MASTER GARDENER PROGRAM

CULTIVATING PLANTS, PEOPLE AND COMMUNITIES SINCE 1973





Cultivating
Plants, People
and
Communities
since 1973



Our purpose

Mission



Engaging university-trained volunteers to empower and sustain diverse communities with relevant, unbiased, research-based horticulture and environmental stewardship education





WSU Extension

Master Gardener Volunteers

Trained by:

WSU faculty
and staff online
and in person.

Learn to:

Teach
research-based
horticulture.

Learn to:

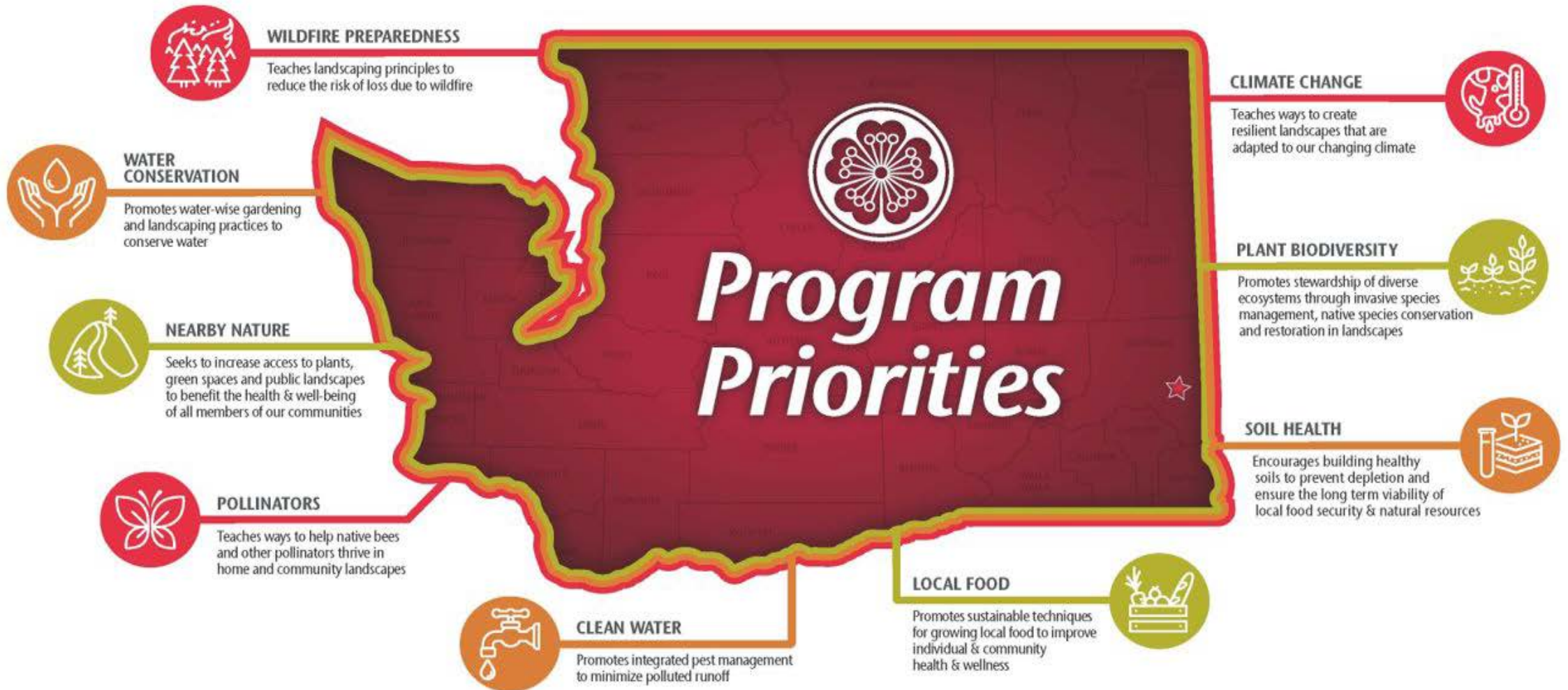
Teach
environmental
stewardship.

Learn :to:

Answer
questions and
volunteer in
communities

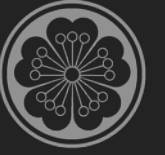
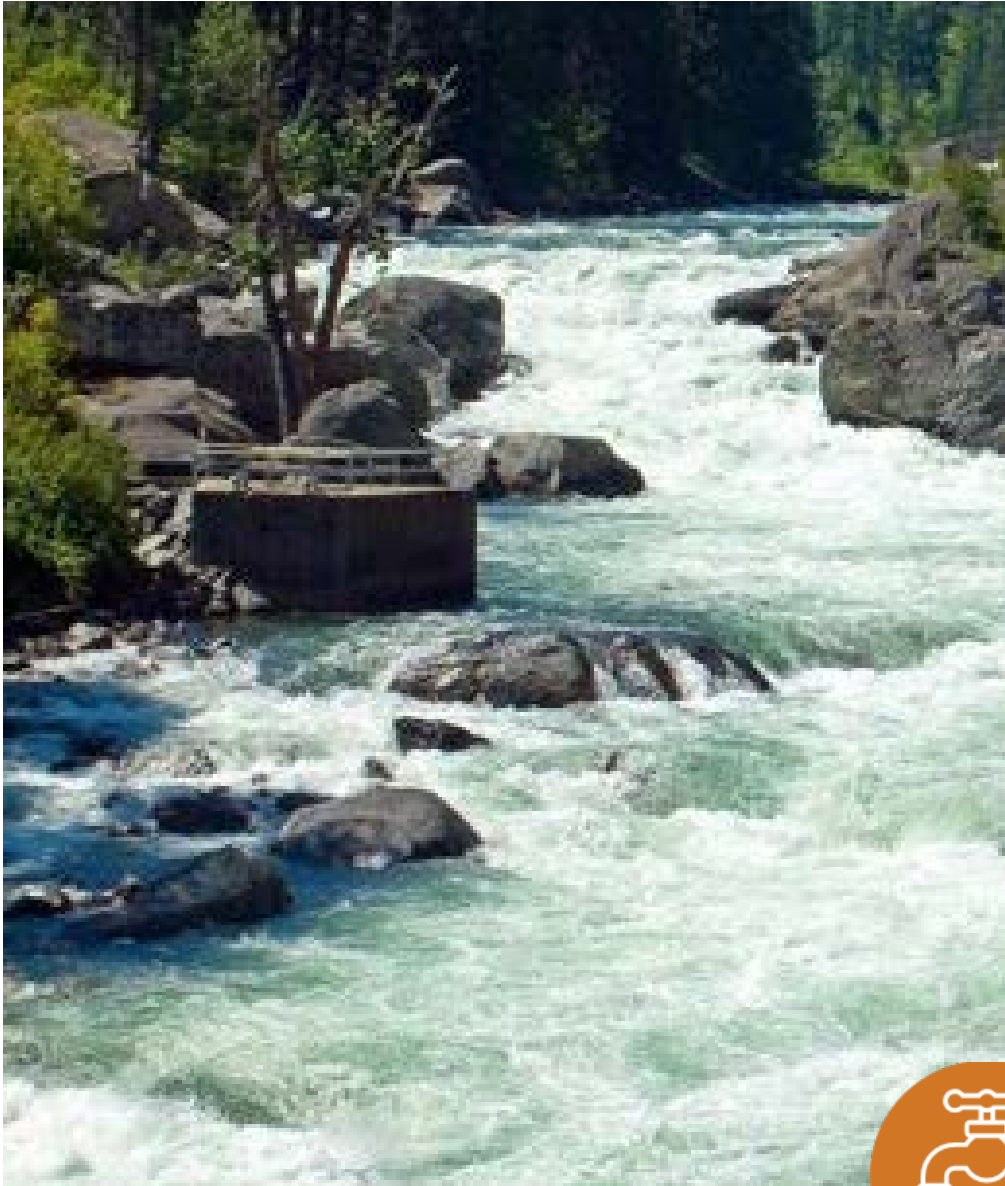
WSU Master Gardener Program

Cultivating Plants, People & Communities Since 1973



Become a volunteer mastergardener.wsu.edu





Promotes integrated pest management to minimize polluted runoff.

Clean Water

- Health of people, wildlife and ecosystems
- We all have a role to play
- Sustainable landscapes using IPM strategies



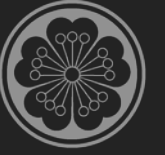


Promotes water-wise gardening and landscaping practices to conserve water

Water Conservation

- Water conservation benefits people, agriculture and the environment.
- We all have a role to play in saving water.
- Design low water landscapes.





Teach landscaping principles to reduce the risk of loss due to wildfire.

Wildfire Preparedness

- Impact of wildland fires on the ecosystem, in the WUI, and on our communities.
- We all have a role to play.
- Work together with neighbors, create a plan.





Promotes sustainable techniques for growing local food to improve individual and community health and wellness.

Local Food

- Benefits of local food on individual and community wellness
- We all have a role to play
- Techniques for growing fruits and vegetables



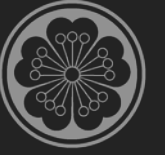


Teach ways to help native bees and other pollinators thrive in home and community landscapes.

Pollinators

- Pollinators are responsible for 1 in every 4 bites of food we eat
- We all have a role to play in pollinator conservation
- Pollinators support plant diversity





Teach ways to create resilient landscapes that are adapted to our changing climate.

Climate Change

- Our changing climate has an impact on people, wildlife and ecosystems
- We all have a role to play
- Techniques for home landscapes



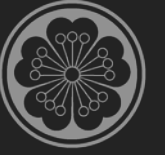


Promote stewardship of diverse ecosystem through invasive species management, native species conservation and restoration in landscapes.

Plant Biodiversity

- Plant biodiversity supports species survivability
- We all have a role to play
- Techniques for protecting biodiversity





Encourages building healthy soils to prevent depletion and ensure the long-term viability of local food security and natural resources.

Soil Health

- Importance of healthy soils
- We all have a role to play
- Techniques for preserving and improving soil





Seeks to increase access to plants, greenspaces and public landscapes to benefit the health and well-being of all communities.

Nearby Nature

- Being in the natural world has proven health and wellness benefits
- Right trees and plants in the home landscape have health and wellness benefits
- We all have a role to play.





SnoCo-Extension Master Gardeners

290 volunteers
20,673 hours served

Valued at \$777,925
annually.



SnoCo Community Impact in 2022

- 407 plant clinic events visited by 5041 members of the public
- 28 Classes offered to the public with 2530 attendees
- 1468 youth attended classes, workshops, demonstrations or field tours.
- 11,523 pounds of produce donated to local food banks



Number of questions answered in each Program Priority

- | | | | |
|--------|--------------------|--------|-----------------------|
| • 250 | Climate Change | • 791 | Plant Biodiversity |
| • 2176 | Nearby Nature | • 40 | Wildfire Preparedness |
| • 796 | Clean Water | • 1104 | Soil Health |
| • 344 | Water Conservation | • 618 | Pollinators |
| • 1060 | Local Food | | |



Community Partnerships

- Surface Water Management's Natural Yard Care program and RainScaping program.
- City of Everett's Natural Yard Care program
- Solid Waste Division's Household Hazardous Waste program





**THANK YOU!
QUESTIONS?**

Program Coordinator

Mary Watts

College of Agricultural, Human
and Natural Resource Science

WSU Extension

Master Gardener Program

mary.watts@wsu.edu