



SNOHOMISH  
COUNTY



---

# **Snohomish County Council 2022 Community Budget Forum**

**Overview of  
Executive's 2023 Recommended Budget  
October 12, 2022**

# Where Does the Money Come From? Sales Tax



For every **\$100** spent on qualified retail purchases, the average sales tax collected is

**\$10.50**



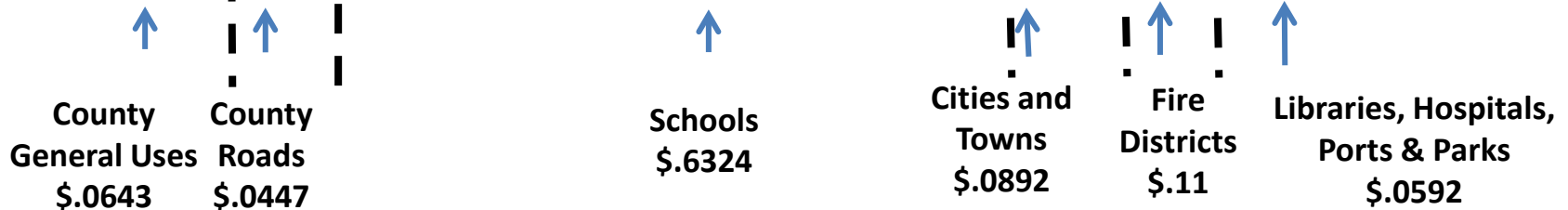
## Who gets what?

State of Washington.....	\$6.50
Cities or <b>County</b> .....	<b>\$1.00</b>
Cities or <b>County</b> for <b>Criminal Justice</b> .....	<b>\$0.10</b>
<b>County for Mental Health</b> .....	<b>\$0.10</b>
<b>County for Emergency Radio System</b> .....	<b>\$0.10</b>
<b>County for Homelessness</b> .....	<b>\$0.10</b>
<b>Community Transit / Everett Transit</b> .....	<b>\$1.20</b>
<b>Regional Transit Authority</b> .....	<b>\$1.40</b>
<b>TOTAL</b>	<b>\$10.50</b>



SNOHOMISH COUNTY

# Where Does the Money Come From? Property Tax



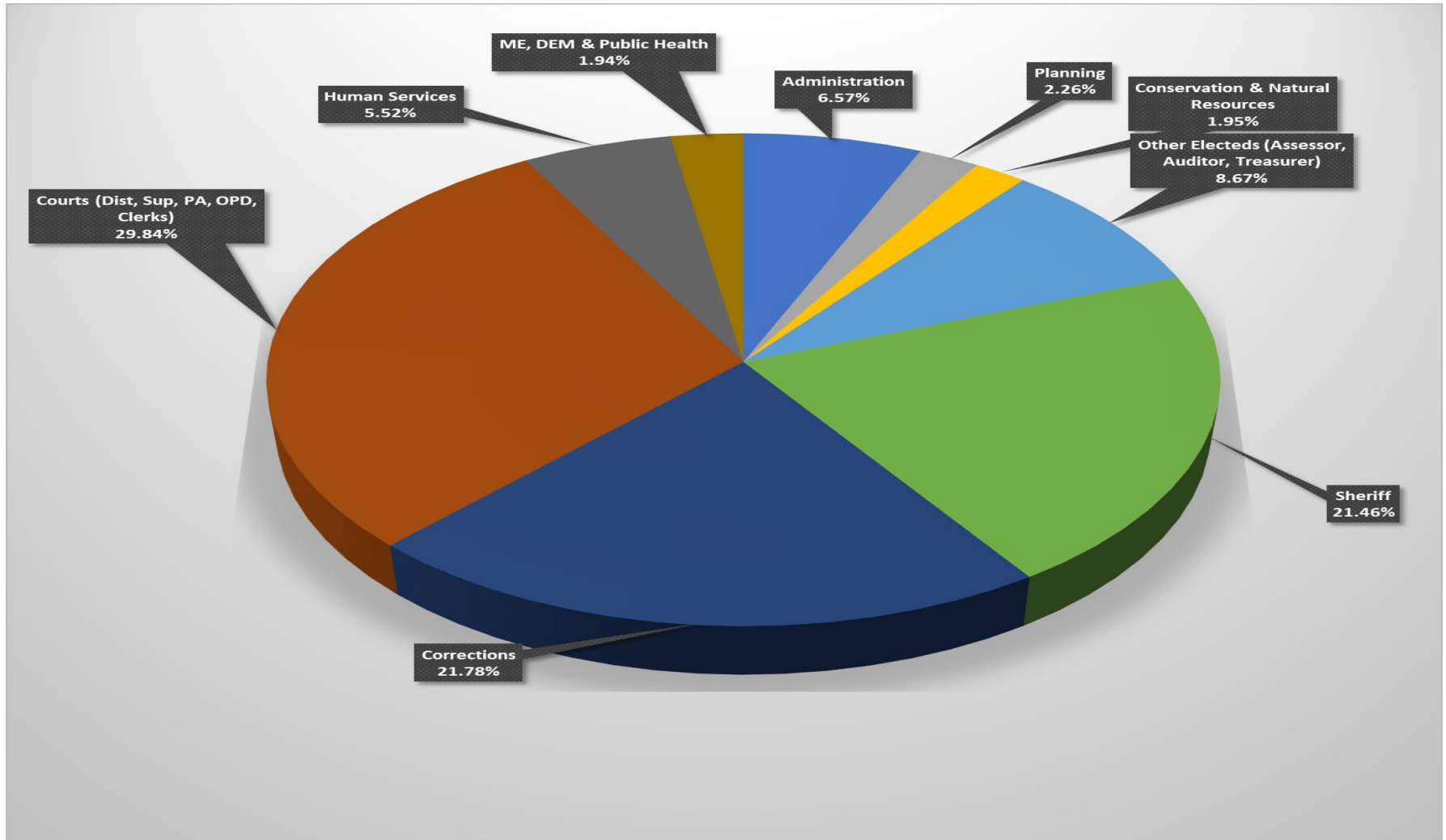
The Executive's 2023 Recommended Budget includes a 1% general property tax increase.

# Where Does the Money Go?

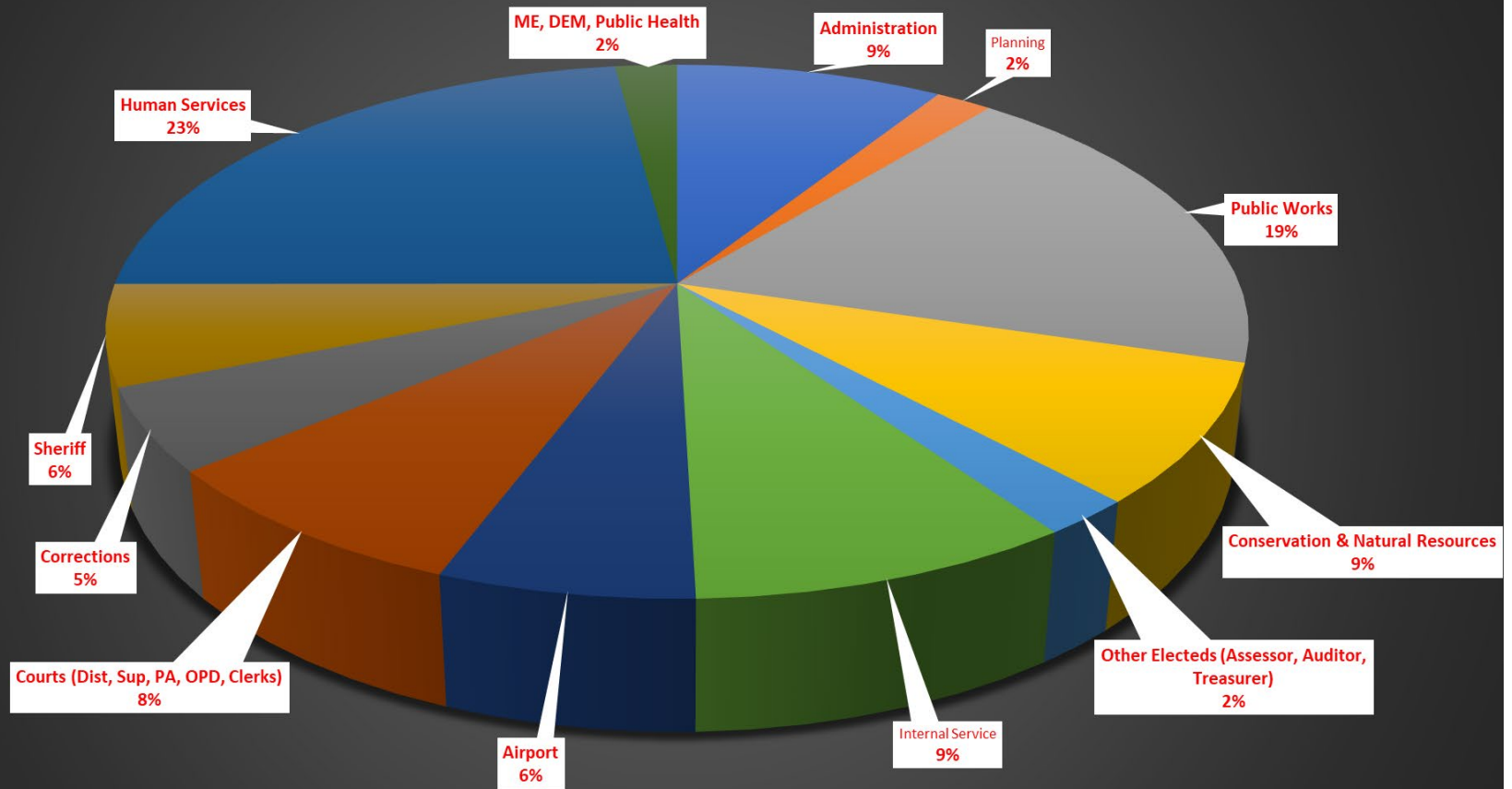


- **In 2023 the Executive’s Recommended Budget plans to spend just over \$1.5 billion dollars to provide a diverse array of services to the residents of Snohomish County. Of this amount, \$315.9 million is in the General Fund.**
- **Some of the services are provided regionally to all residents of the County such as:**
  - **Solid Waste, Elections, Prosecuting Attorney**
  - **Corrections, Superior Court, Evergreen Fair**
- **Other services are provided to residents of unincorporated Snohomish County such as:**
  - **Sheriff, Roads Maintenance and Construction**
  - **Surface Water Management, Parks and Recreation, Planning and Development Services**

# General Fund Budget



# COUNTY-WIDE BUDGET





## What are the challenges for 2023?



**Pandemic Economic Recovery:** Workforce challenges are being impacted by childcare issues, and inflationary factors continue to impact consumer habits, as does the potential threat of a recession.

**American Rescue Plan (ARP):** Implementing a spending plan focused on assisting Snohomish County residents' recovery from the social and economic impact of the pandemic.

**Public safety:** The continuation of the opioid crisis, exacerbated by the influx of fentanyl, and the corresponding increase in related criminal activity impacts public officials at all levels of government, and requires significant resources to address.

**Behavioral health:** A constant area of concern throughout the population, especially the impacts on youth and our schools.



SNOHOMISH COUNTY

# What Are Your Priorities?



## Make Yourself Heard

### Send an E-Mail

[Contact.Council@snoco.org](mailto:Contact.Council@snoco.org)

### Send a Letter

Snohomish County Council  
3000 Rockefeller Ave. M/S 609  
Everett, Washington 98201