

Uncommon Thinkers Welcome®



**Here, innovation and
tradition are on the
same plane.**

Snohomish County Update August 2023



Overview

- **2023 Highlights**
- **Upcoming initiatives**
- **Q&A**





**Our co-workers
are definitely
characters.**

Highlights

- **Major Projects:**
 - **Nordic ILM**
 - **SelectUSA Spinoff**
 - **Asset Inventory**
 - **Paris Air Show**
 - **APEC**
- **Business Attraction Trends**
- **Inbound Delegations**

Nordic ILM

5/20-5/27, Iceland & Norway



Select USA Spinoff
4/27-4/28

**Earthcare Expands to
Greater Seattle**
8/16 announcement



EARTH CARE[®]
EQUIPMENTS PVT. LTD

Fueling Sustainability: Harnessing The Power Of
Biogas For A Greener Future

7755920427 eceptl.com

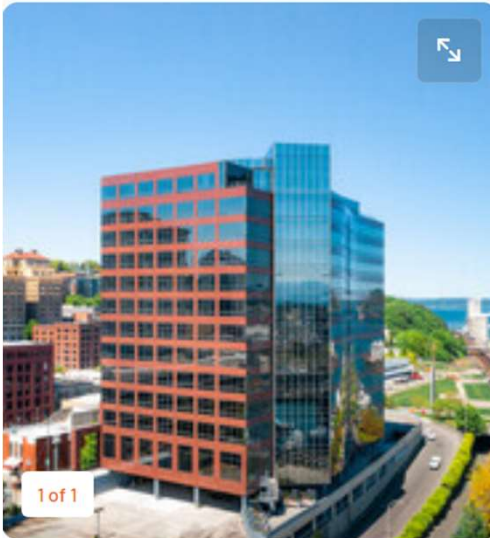
Asset Inventory

909 A Street Building

909 A Street, Tacoma, Pierce County, Washington,

Details

What's Nearby

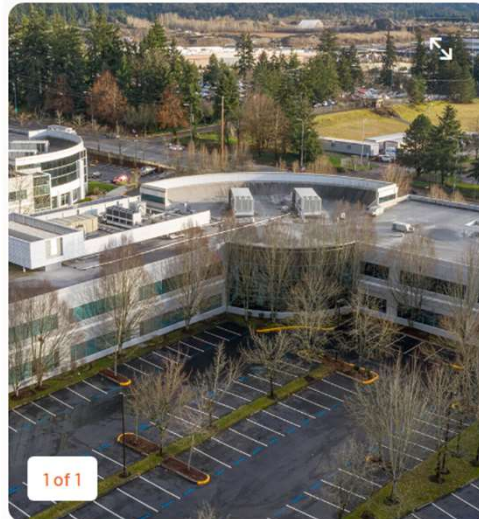


Millennium Corporate Park

18200-18700 NE Union Hill Road, Redmond, King County, Washington, 98052

Details

What's Nearby



Cascade Business Park

16xxx 51st Avenue, Marysville, Snohomish County, W 98271

Details

What's Nearby





Paris Air Show

6/19-6/24



APEC



The Seattle Times

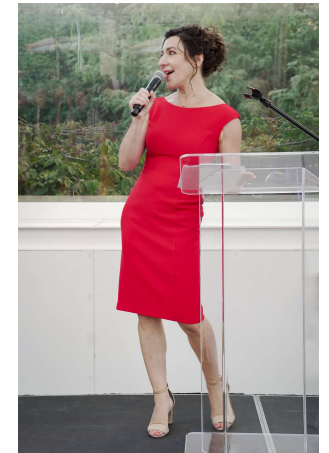
Opinion

APEC is advancing the inclusive growth we all seek in Washington

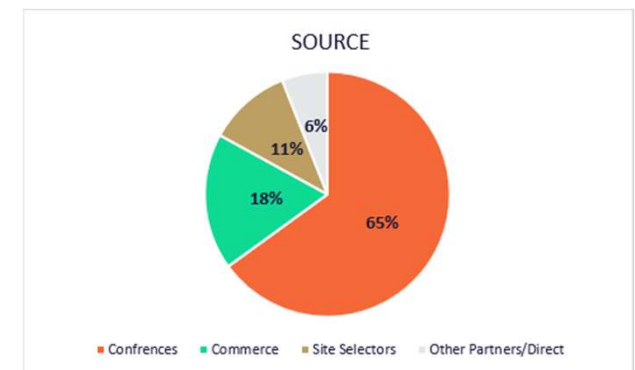
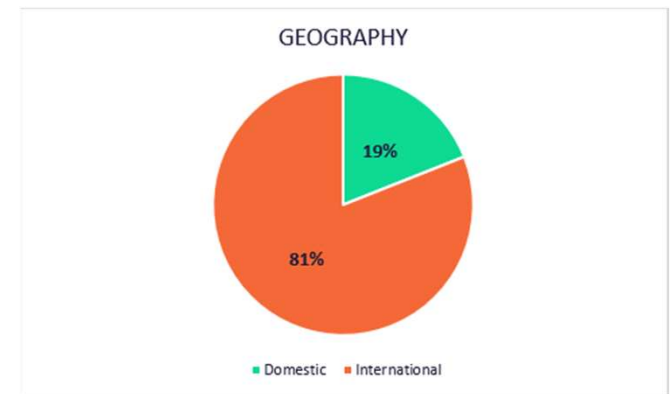
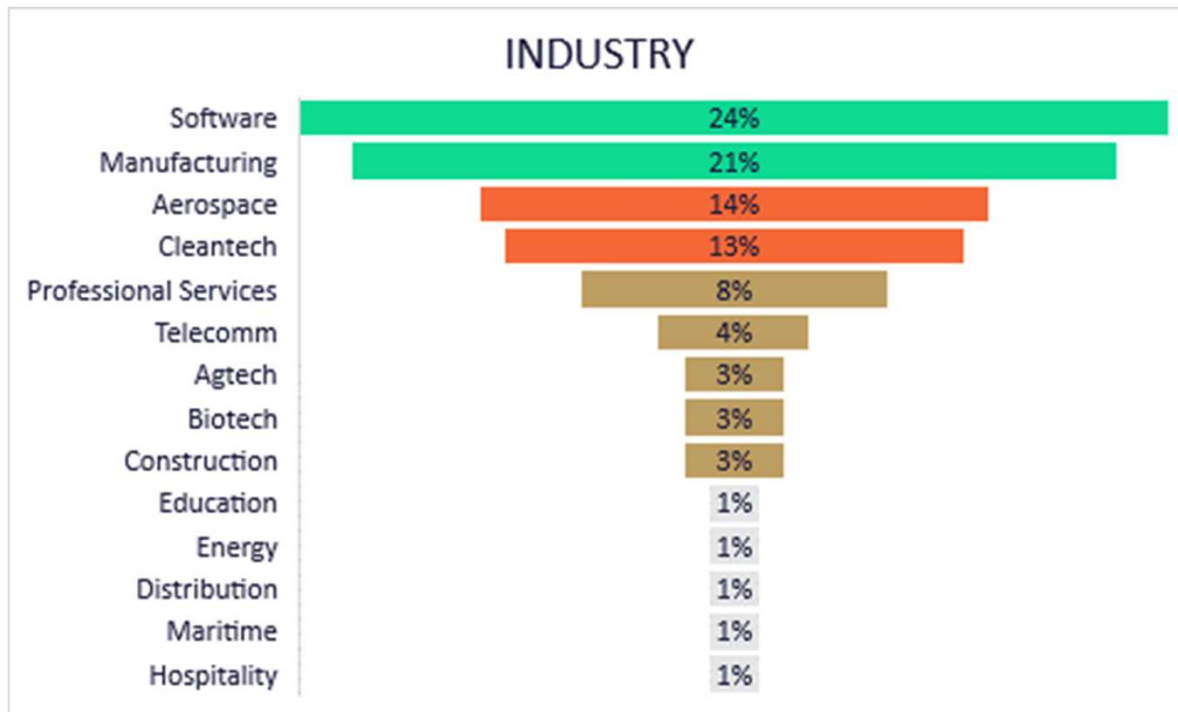
July 30, 2023 at 12:01 pm | Updated July 30, 2023 at 12:01 pm

Business | Economy | International Trade | Local Business | Local Politics

Asia-Pacific leaders cap off trade meetings with Space Needle summit



Business Attraction Trends: *snapshot of 73 opportunities through 7/23*



Inbound Delegations

24 in 2023 through 8/23



**Where the latest
trend in coffee is a
thousand years old.**

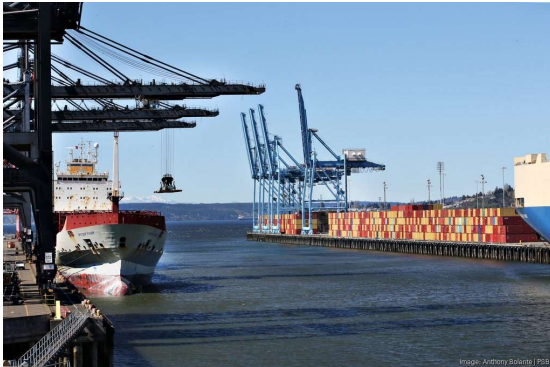


Up Next

- **Export Accelerator**
- **Site Visit Coaching**
- **Job Hubs**
- **GeekWire and PSBJ Partnerships**
- **Korean Advance**
- **Capital Campaign**

Export Accelerator *applications due 8/23*

**PUGET SOUND
BUSINESS JOURNAL**




**GREATER SEATTLE
EXPORT ACCELERATOR**
powered by SBA Growth Accelerator

- ▶ EXPORT TRAINING
- ▶ EXPERT MENTORING
- ▶ SELECTED PARTICIPANTS*
FULLY SPONSORED
- ▶ APPLICATION DEADLINE
AUGUST 15

GREATER-SEATTLE.COM/EXPORTACCELERATOR

  
GREATER SEATTLE PARTNERS U.S. Small Business Administration

***Open to Snohomish, King, and Pierce County small businesses**

425Business



Site Visit Coaching



GLS GLOBAL
LOCATION
STRATEGIES

STEP 01

Site Questionnaire

The EDO completes a site questionnaire for a site that it submits most frequently in site selection projects.

The purpose of this exercise is twofold:

- Evaluate the quality of the EDO's site questionnaire response
- Determines potential site obstacles or gaps in information

STEP 02

Site Visit

A GLS site consultant will either connect online or travel to community and conduct a mock site visit for the site submitted for consideration through the site questionnaire. Community, utility, and other stakeholders who are frequently involved in the site selection process will be asked to participate.

The visit goals include:

- Evaluate the effectiveness of the site visit, including community messaging, site-specific knowledge and more.
- Pinpoints potential site limitations

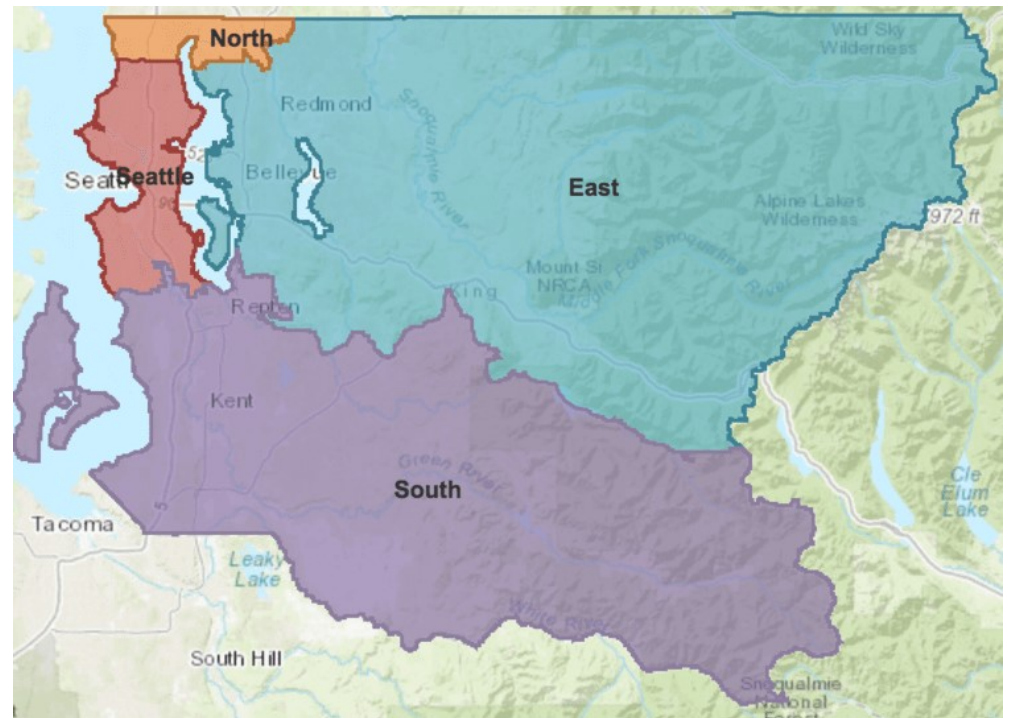
STEP 03

Report Card

Following GLS's site visit, an executive report will be sent identifying the effectiveness of the site questionnaire and site visit, as well as any immediately apparent concerns with product and community assets.

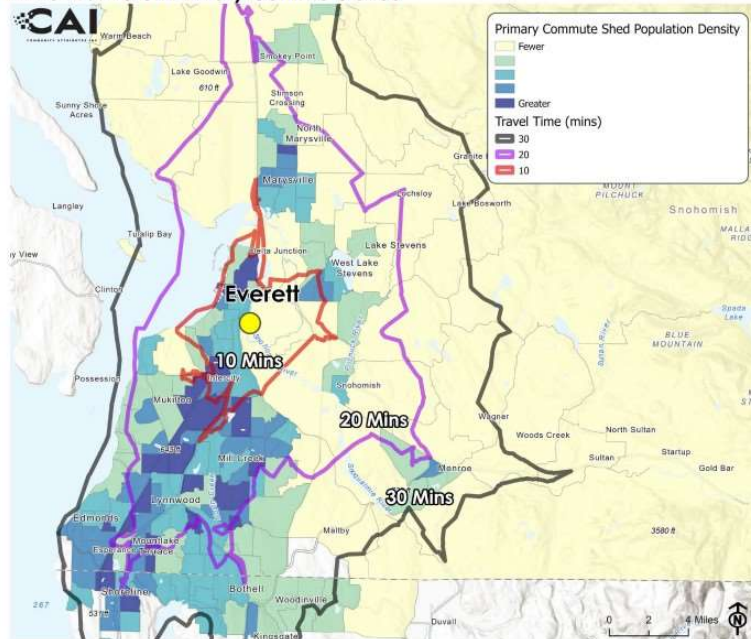
If a single product or performance obstacle has been identified through this engagement, GLS will offer opportunities for improvement.

Alternatively, GLS will provide a path forward with more in-depth analyses to determine the cause of EDO's self-identified underperformance in project attraction efforts.



Job Hubs

Exhibit 7. Everett Primary Commute Shed



Pilot cities: Everett, Tacoma, Auburn

- **Highlight: Investment opportunities**
- **Focus: Populations that have not fully accessed regional economic opportunity**
- **Identify: target industries, real estate assets, education and training partners; and create customized marketing profile**

GeekWire and PSBJ Partnerships



Special events:
GeekWire Gala &
“Uncommon Thinkers”
Awards



Sponsored content:

- **6 articles in GeekWire**
- **6 Articles in PSBJ**
- **Focused on key sectors**
- **Featuring investors and partners**



Photo Credit: | Provided Courtesy of Montgomery County Economic Development Corporation
Bringing biotech to market faster in Montgomery County, Maryland



Korean Advance *October 2023*



Capital Campaign



Uncommon Thinkers Welcome®



**Here, innovation and
tradition are on the
same plane.**

Q&A

