



---

# **Snohomish County Council 2024 Community Budget Forum**

**Overview of  
Executive's 2025-2026 Recommended Biennial Budget  
October 9, 2024**

# Where Does the Money Come From? Sales Tax



For every **\$100** spent on qualified retail purchases, the average sales tax collected is

**\$10.50**



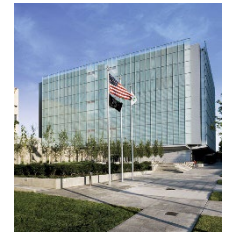
## Who gets what?

State of Washington.....	\$6.50
Cities or <b>County</b> .....	<b>\$1.00</b>
Cities or <b>County</b> for <b>Criminal Justice</b> .....	<b>\$0.10</b>
<b>County</b> for Mental Health.....	<b>\$0.10</b>
<b>County</b> for Emergency Radio <b>System</b> .....	<b>\$0.10</b>
<b>County</b> for Homelessness.....	<b>\$0.10</b>
Community Transit / Everett Transit.....	<b>\$1.20</b>
Regional Transit Authority.....	<b>\$1.40</b>
<b>TOTAL</b>	<b>\$10.50</b>



SNOHOMISH COUNTY

# Where Does the Money Come From? Property Tax



↑	↑	↑	↑	↑	↑
County General Uses \$.0613	County Roads \$.0421	Schools \$.6288	Cities and Towns \$.0791	Fire Districts \$.1312	Libraries, Hospitals, Ports & Parks \$.0575

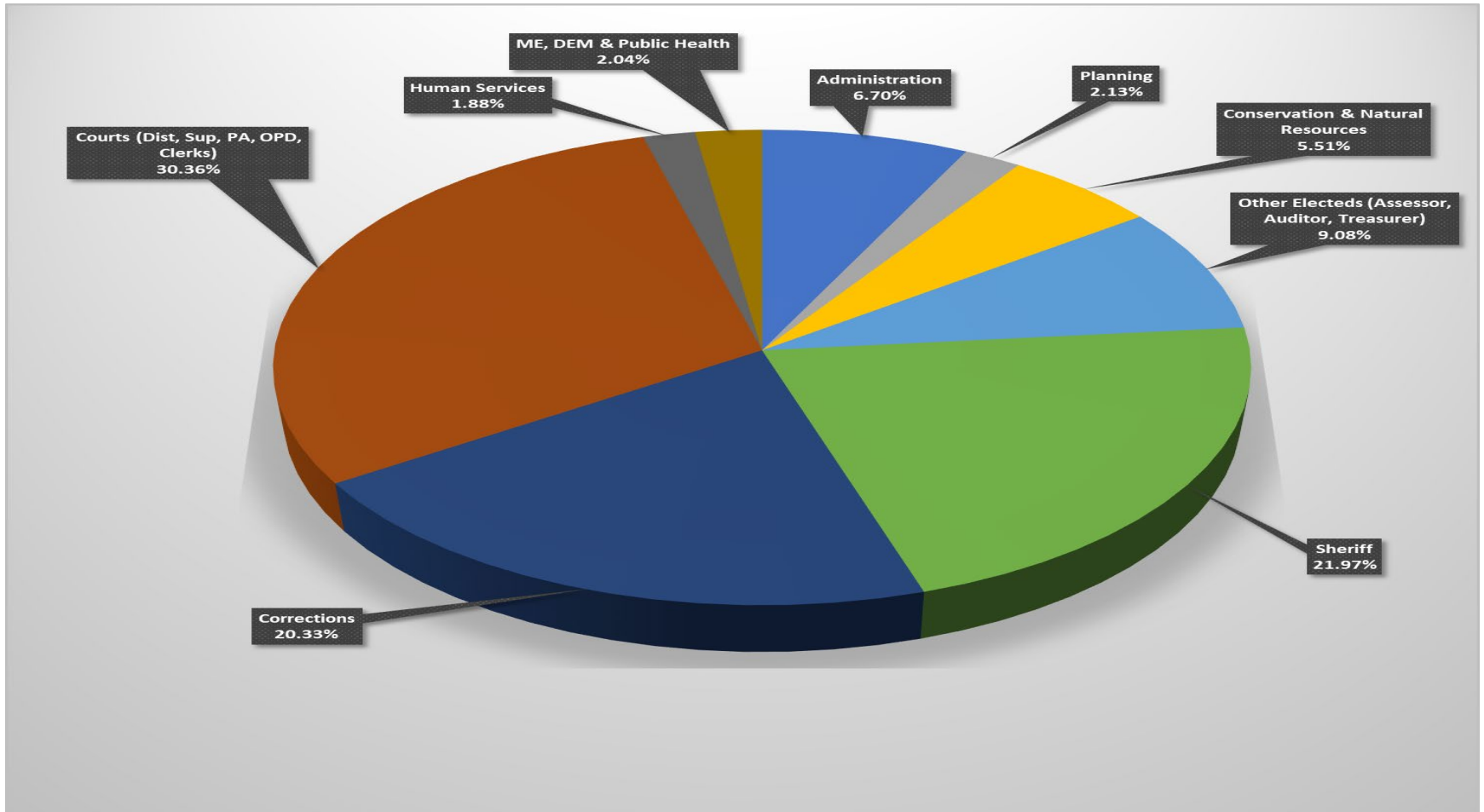
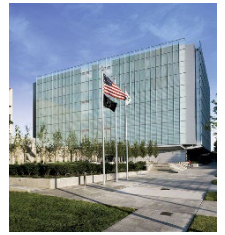
The Executive's 2025-2026 Recommended Budget includes a 1% general property tax increase, as well as the use of banked capacity (~3.15% each year).

# Where Does the Money Go?

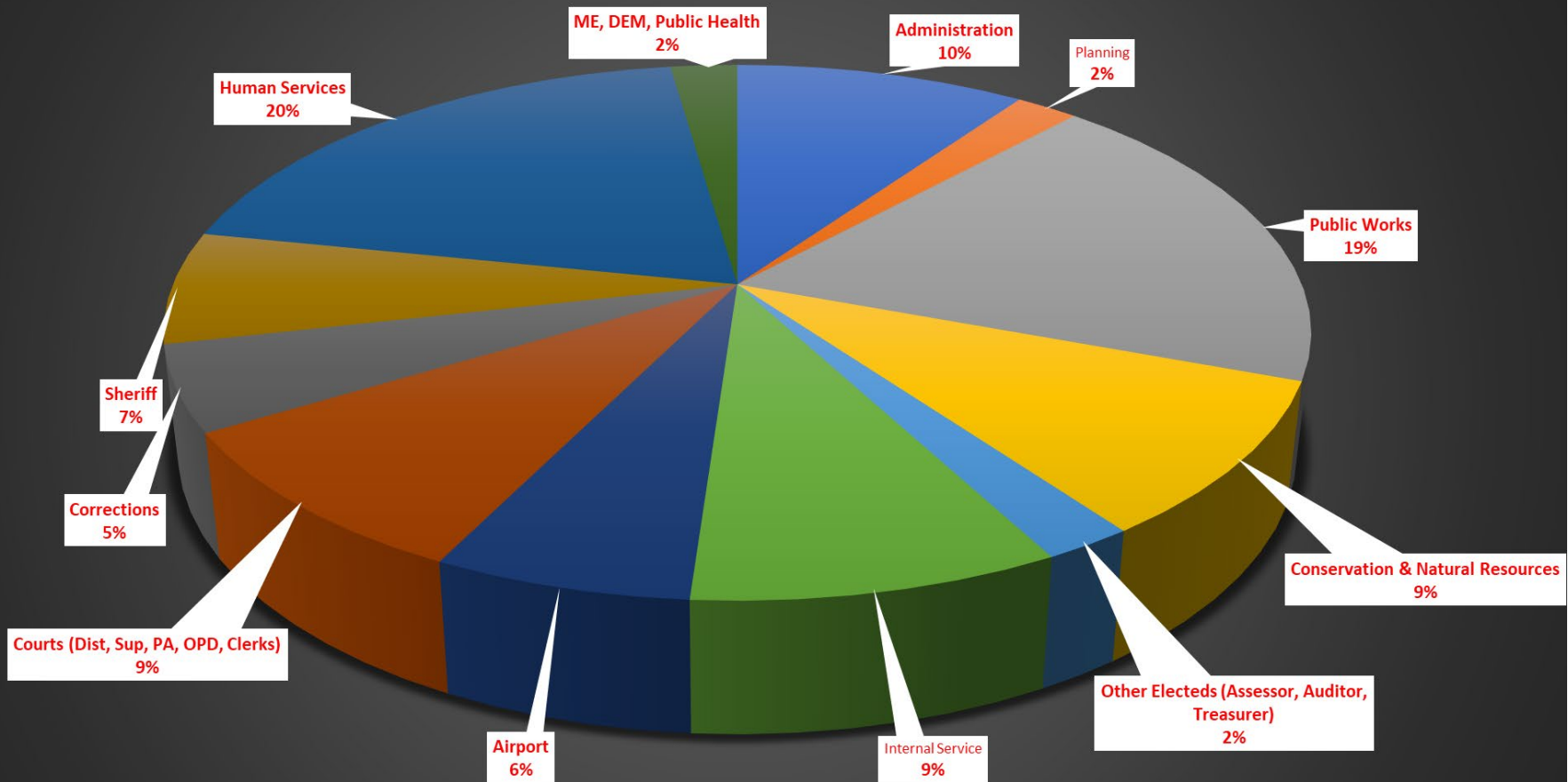


- In 2025-26 the Executive's Recommended Budget plans to spend just over \$3.06 billion dollars to provide a diverse array of services to the residents of Snohomish County. Of this amount, \$699.8 million is in the General Fund.
- Some of the services are provided regionally to all residents of the County such as:
  - Solid Waste, Elections, Prosecuting Attorney
  - Corrections, Superior Court, Evergreen Fair
- Other services are provided to residents of unincorporated Snohomish County such as:
  - Sheriff, Roads Maintenance and Construction
  - Surface Water Management, Parks and Recreation, Planning and Development Services

# General Fund Budget



# COUNTY-WIDE BUDGET





## What are the challenges for 2025-2026?



**Public safety:** The continuation of the opioid crisis, exacerbated by the influx of fentanyl, impacts public officials at all levels of government, and requires significant resources to address.

**Behavioral health:** A constant area of concern in all populations, especially youth and schools, with capacity issues across the mental health spectrum of care. The lack of sufficient behavioral health facilities is increasingly challenging as we strive to meet the needs of the community.

**Government Services:** Unfunded mandates and disproportionate revenue sharing along with continuing increases in the cost of providing government services due to inflationary pressures produces significant challenges in our ability to provide core services, while balancing the financial impact to residents.

**Federal Funding Ending:** With the expiration of pandemic recovery funds, the ability to provide ongoing services in areas of need such as housing, childcare, food services, etc. must be balanced with other core government services.

# What Are Your Priorities?



## Make Yourself Heard

### Send an E-Mail

[Contact.Council@snoco.org](mailto:Contact.Council@snoco.org)

### Send a Letter

Snohomish County Council  
3000 Rockefeller Ave. M/S 609  
Everett, Washington 98201