

Annual Report Highlights

SNOHOMISH



CONSERVATION DISTRICT

About Us



We are a team of 30 dedicated staff, two field crews, and five elected and appointed board members from our community.



We have been working with farmers, city residents, rural and suburban landowners on a voluntary basis since 1941.



RCW 89.08: Our mission is to work cooperatively with others to promote and encourage conservation and responsible use of natural resources.



Lawns to Lettuce



Sound Horsekeeping



Sound Education



Farm Planning



Wildlife Habitat



Habitat Restoration



Rain Gardens



Natural Yard Care

129 FARMS ASSISTED

We're here to support our local farms, from large commercial operations to small urban farms, and everything in between.



Climate Impacts to Farms



Increase Resilience on Your Farm



**Ag Resilience
Fact Sheets**



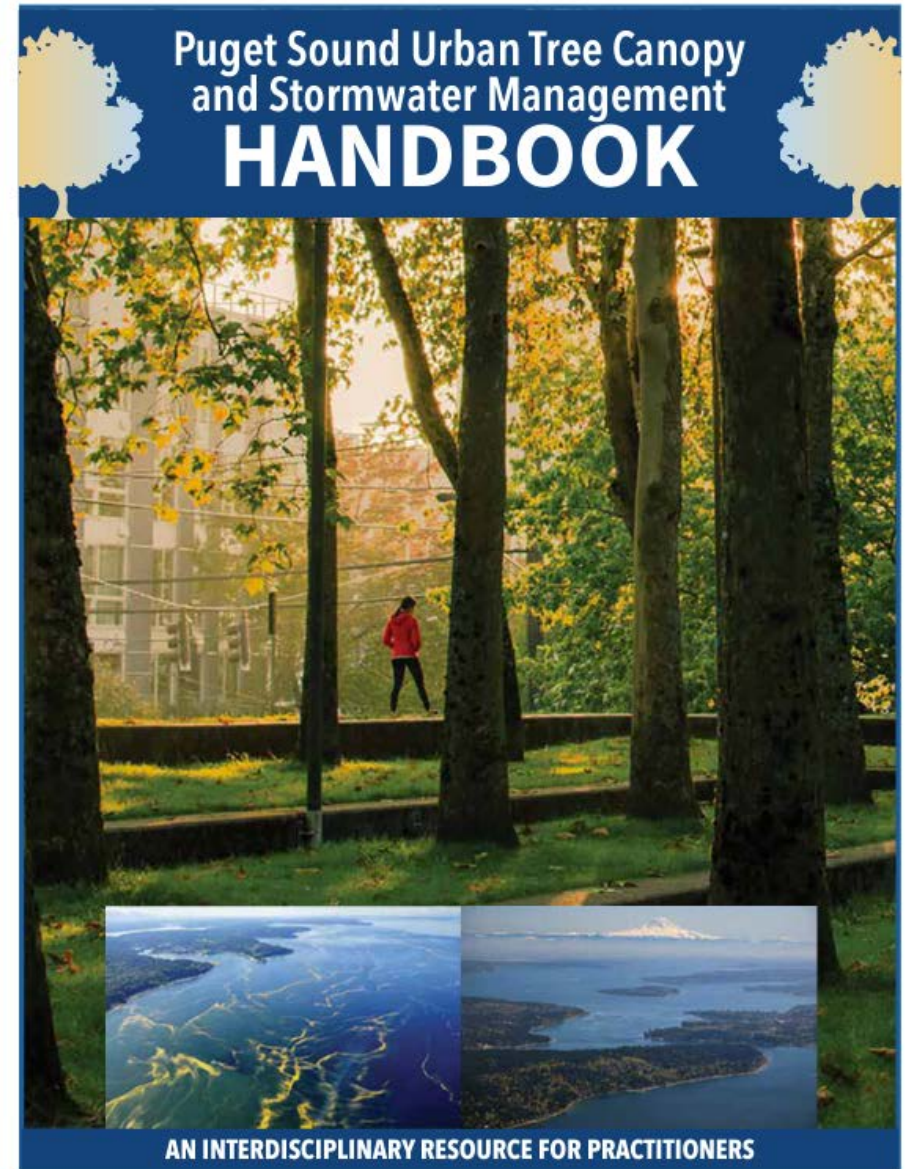
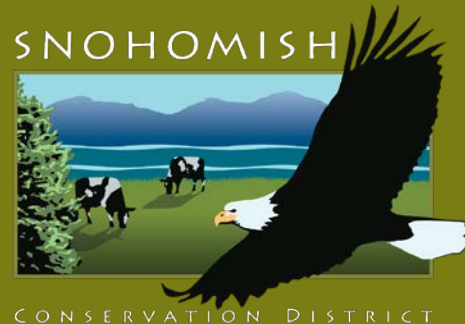
50 BEST MANAGEMENT PRACTICES INSTALLED ON FARMS

We're introducing conservation-friendly efficiencies on the farm that save time and money.

351 ACRES OF FARMLAND PROTECTED

We assist landowners in
enrolling in conservation
easement programs to protect
farmland for generations to
come.

Puget Sound Urban Tree Canopy and Stormwater Management Handbook



Multiple Benefits of Urban Forests



<https://www.seattleweekly.com/news/will-seattle-finally-protect-its-tree-canopy/>

- Water quality
- Air quality
- Noise, privacy, wind buffer
- Carbon sequestration
- Wildlife habitat biodiversity
- Mitigates heat island effect
- Livability, human health
- Community equity

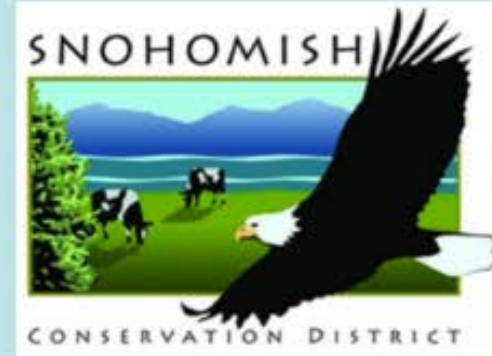
Key Finding



Increase in tree cover over impervious surfaces results in decreased runoff volumes.

Best Management Practice:
Plant trees to overhang impervious surfaces for high stormwater runoff and pollution reduction benefits

Urban Forest & Tree Canopy in City Priorities



Advocate

Climate Resilience

Integrated agenda
Equity & Human Health

Stormwater

Trees, esp. conifers
GSI - Landscape scale

Air Quality

Green Infrastructure
Filters/Oxygenators

Sustainability

Balance with growth
Preservation/conservation

Habitat

Biodiversity
Healthy Ecosystems

Carbon Sequestration

Carbon Sink
Forest Credits

Fertile Soil

Assess

Canopy mapping
GIS layers
Inventory

Analyze

iTree Suite
Tree Equity Index
Community Tree Map
Stormwater Heat Map

Policy/Planning

Goals/priorities
City plans
Ordinances

Collaborate

GSI/GI BMP's
Co-design
Urban Forester

Funding

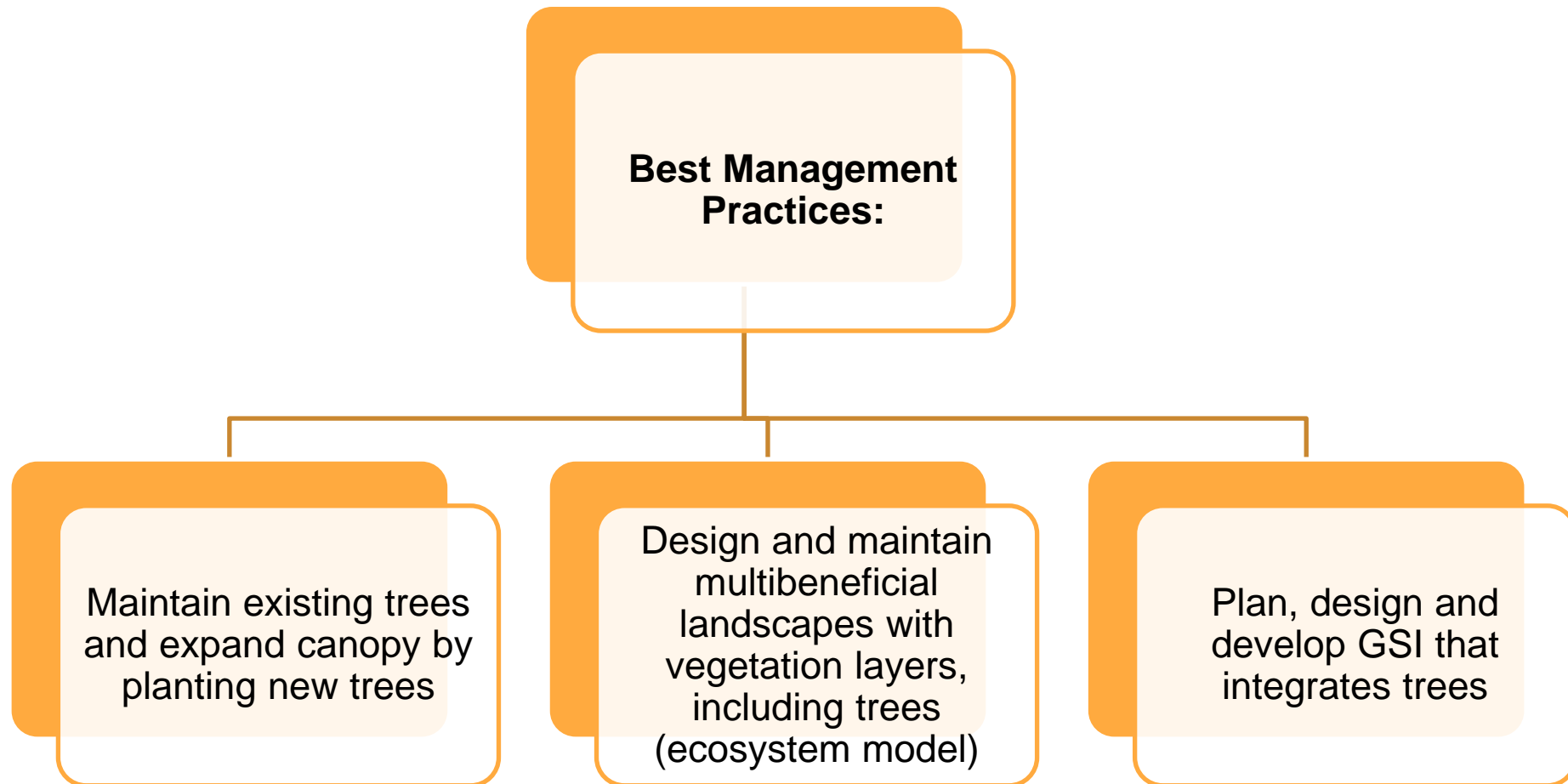
SW Utility
City Forest Credits
Climate action
agenda

Stewardship

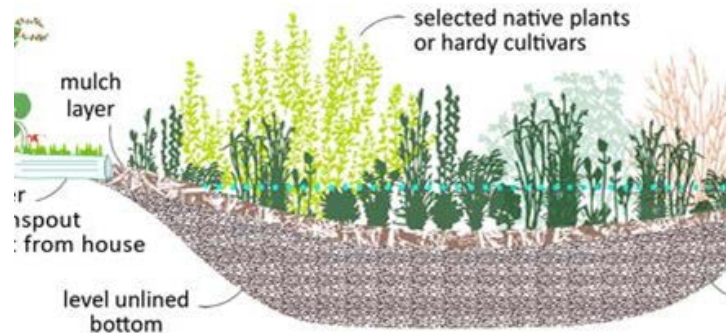
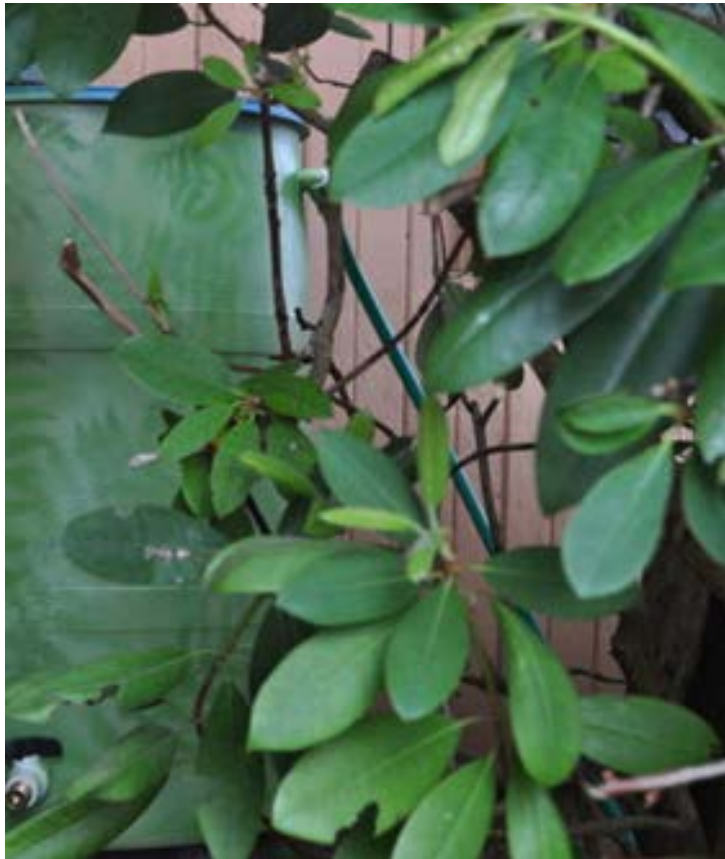
Community
engagement
Community plantings
Tree distribution
Ecosystem restoration
Adaptive
management

Trees and Stormwater Co-Design

More GSI collaboration needed across industries and municipalities



Green Stormwater Infrastructure



Our staff and Conservation Crew are in the field spring through fall installing green infrastructure projects:

- Rain Gardens
- Rain Barrels
- De-paves
- Bio-swales

**13,795 GALLONS OF RAINWATER
STORAGE INSTALLED OR
RETROFITTED**

Creating rainwater storage
reduces storm water runoff
where we don't want it and
places it where we do want it, like
thirsty gardens and yards.

Upcoming Events: Local City Success Stories



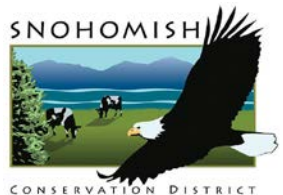
**See collaborative city GSI projects in action
across Puget Sound:**

Thursday, May 12, 11:30 am – 1:00 pm
Clarks Creek Basin: Puyallup

Thursday, May 19, 11:30 am – 1:00 pm
Renton's Stormwater Green Connection Project: Renton

Thursday, May 26, 11:30 am – 1:00 pm
Arlington's Old Town Wetland: Arlington

www.snohomishcd.org/events



Forest Stewardship Program



**Assisted 31 landowners and
700 acres of forestland**

Broadening

Broadening
partnerships in
Snohomish
County

Increasing

Increasing
services for
landowners,
including cost
share funding

Delivering

Delivering
community
wildfire
resilience
planning and
project
implementation

Forest Ecological Goals



Restore forest-related ecosystem functions



Improve fish and wildlife habitat



Protect water quality



Reduce stormwater runoff



Habitat Restoration



We provide jobs and career training

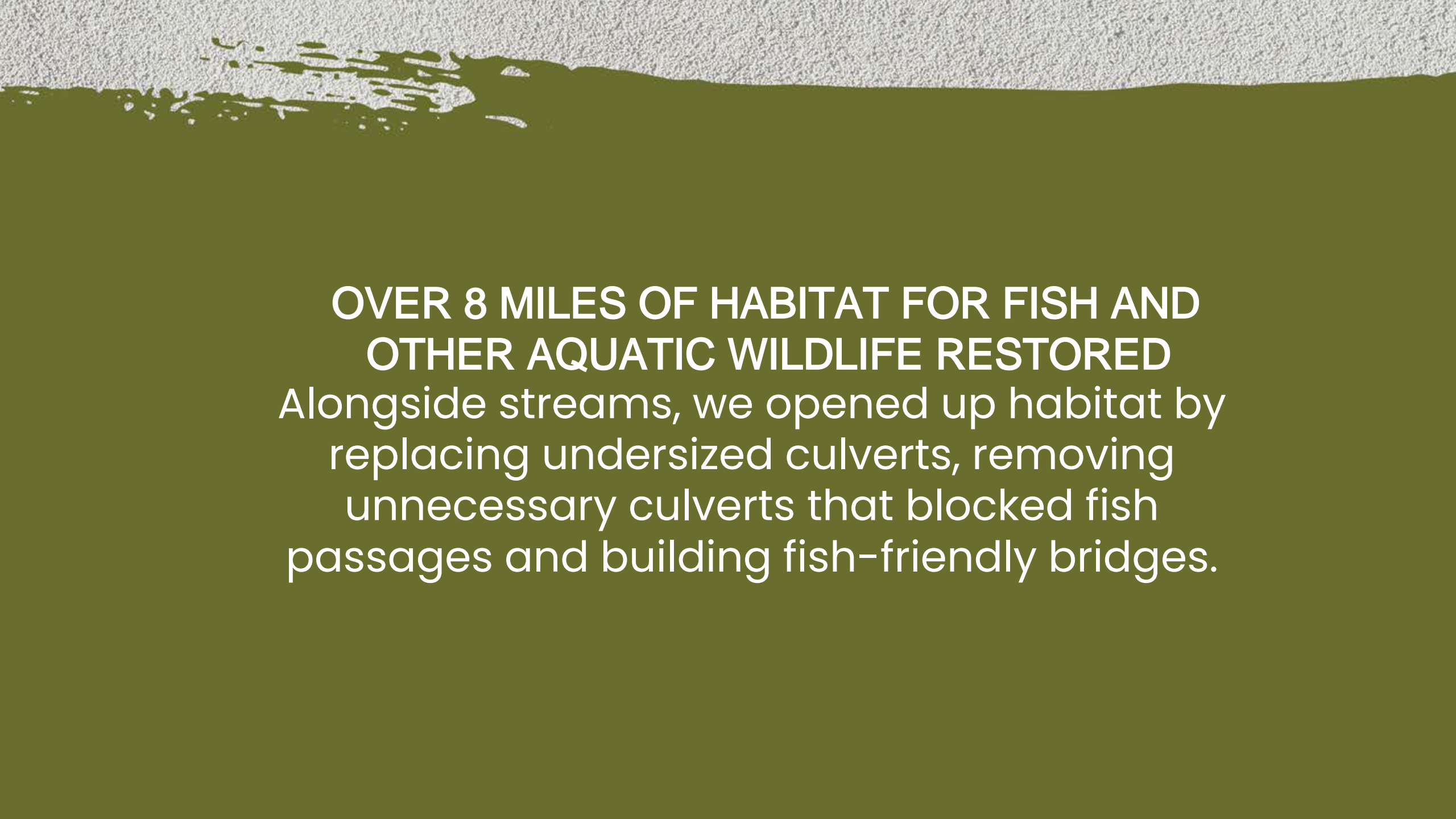
- Washington Conservation Crew
- Community Conservation Crew

Our staff and crews:

- Plant native trees and shrubs
- Restore riparian habitat
- Remove invasive species
- Install livestock exclusion fencing

Riparian Reforestation and Stewardship





OVER 8 MILES OF HABITAT FOR FISH AND OTHER AQUATIC WILDLIFE RESTORED

Alongside streams, we opened up habitat by replacing undersized culverts, removing unnecessary culverts that blocked fish passages and building fish-friendly bridges.



In 2021, SCD
worked with
private
landowners to
remove 4 fish
passage barriers
and open 8.2
miles of habitat
for salmon and
other wildlife



**Drainage Improvement
District 13**

Swan's Trail Slough



Drainage Base Map

Snohomish County

DD13

Snohomish Conservation District
Everett/Snohomish/Washington

Legend

- 6ft tidegate & 1ft hidrostal
- Beaver dam
- Salatca Bridge
- House
- Roads
- Pipelines
- Waterline
- Levees
- Drainage districts
- 2019 parcels
- SCD survey points



801 Second Avenue Suite 1150
Seattle, Washington 98104
+1 (206) 269 0104
+1 (206) 269 0098

www.cardno.com

NAD_1983_StatePlane_Washington_North_FIPS_4601_Feet

This map and all data contained within are supplied as is with no warranty. Cardno expressly disclaims responsibility for damages or liability from any claims that may arise out of the use or misuse of this map. It is the

Flood Concerns



Flood and Sea Level Rise

Select a Region:

Snohomish County

Select a Hazard:

Riverine & Coastal Flooding

Select Greenhouse Gas Scenario:

Low

High

Select Annual Chance Event:

2-year
(50%)

10-year
(10%)

25-year
(4%)

100-year
(1%)

Flood Year:

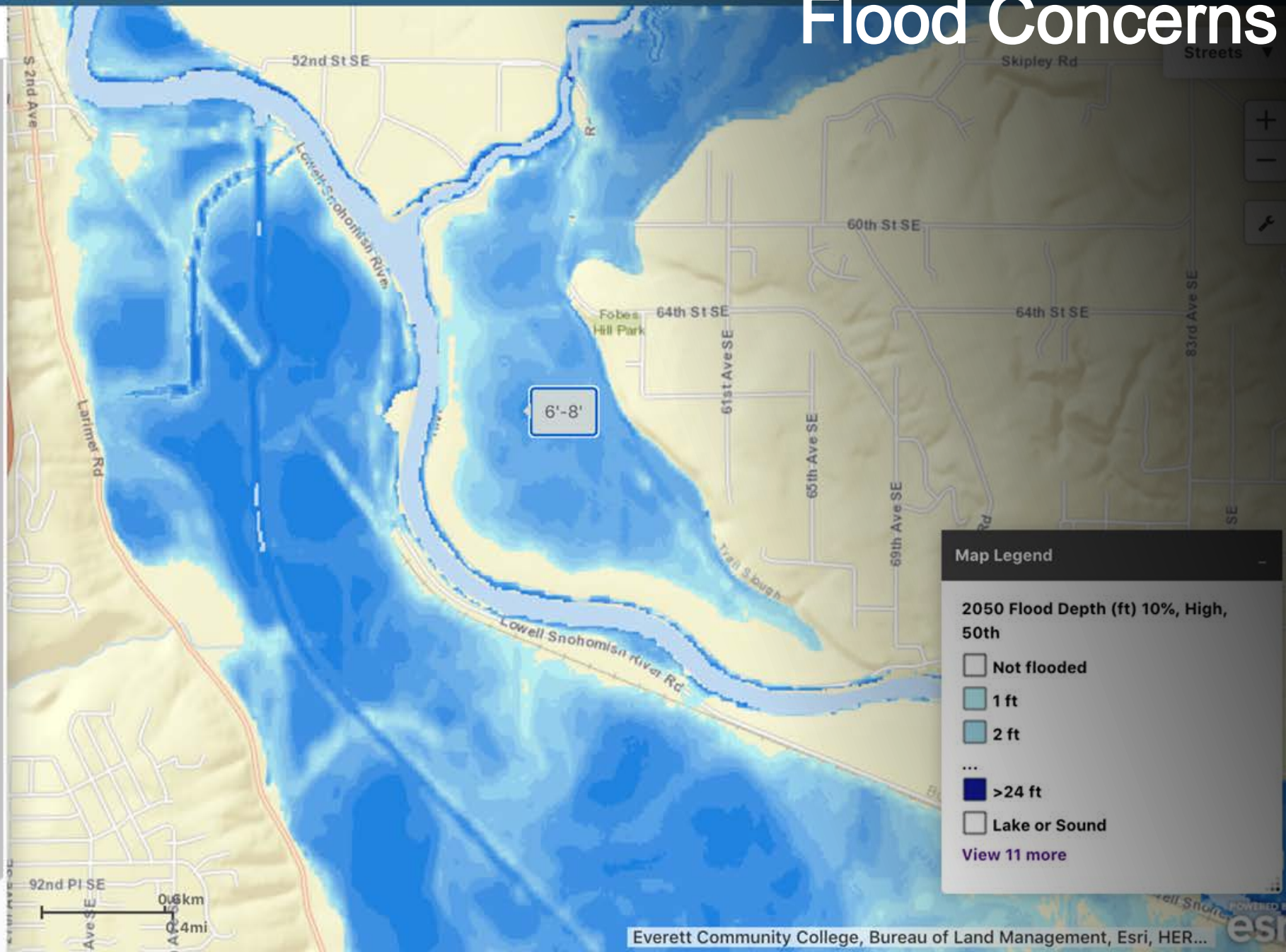
1980s

2050s

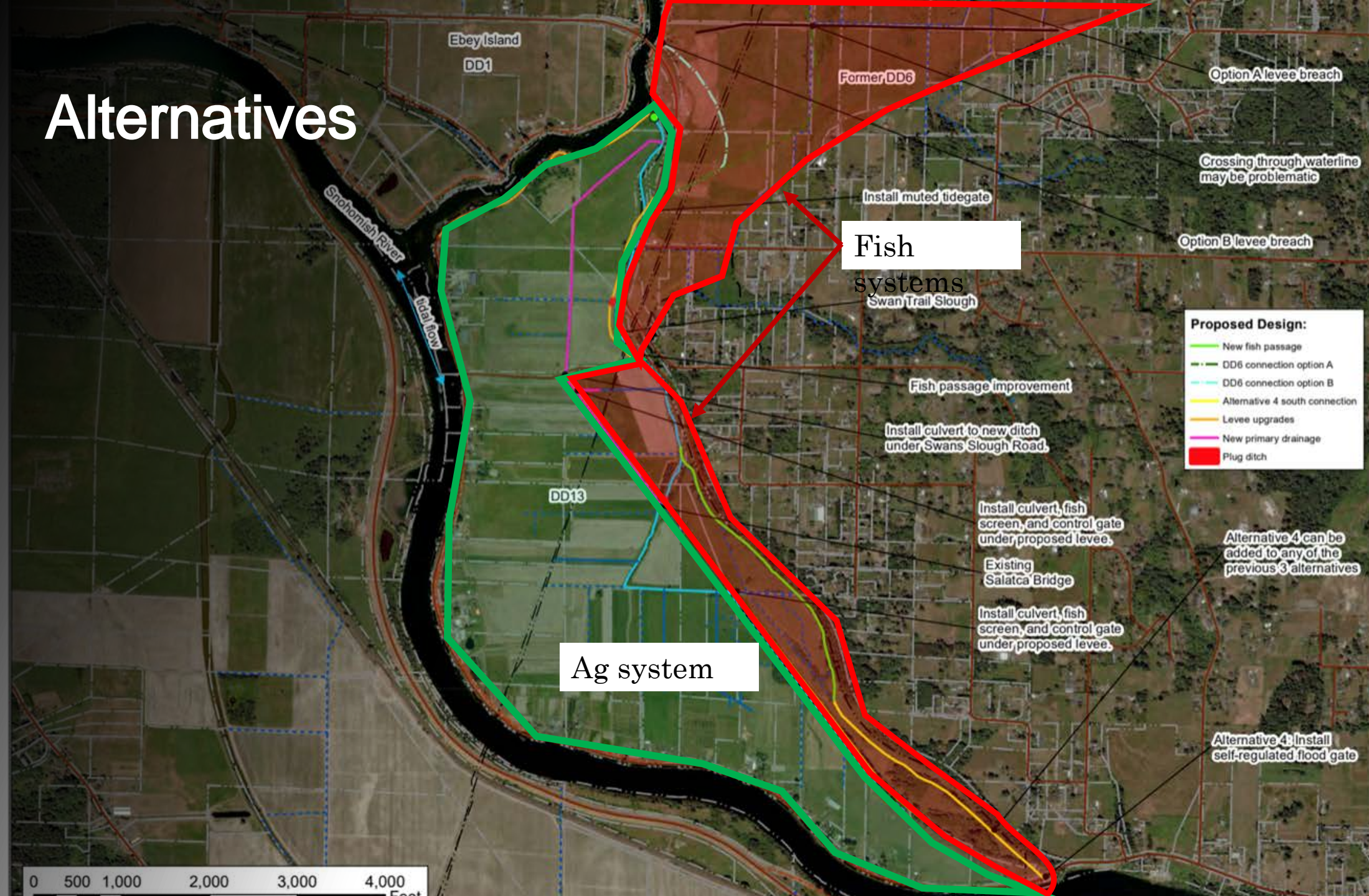
2080s

Opacity

Note: click on the map to identify the flood depth at that specific location.



Alternatives



Alternative 3 & 4

Multi-Benefit Projects in DD13 and Swan's Trail Slough

Snohomish Conservation District
Everett/Snohomish/Washington

Existing Conditions:

- Existing pump location
 - Beaver dam
 - House
 - Pipelines
 - Waterline
 - Roads
 - Levees
 - Drainage districts
 - 2019 parcels
- Watercourses**
- DD13 maintained – intermittent flow
 - DD13 maintained – perennial flow
 - Private – intermittent flow
 - Private – tiled drainage



Prepared By Cardno
Date: 11/5/2020
Imagery Source: Maxar 7/32/2018

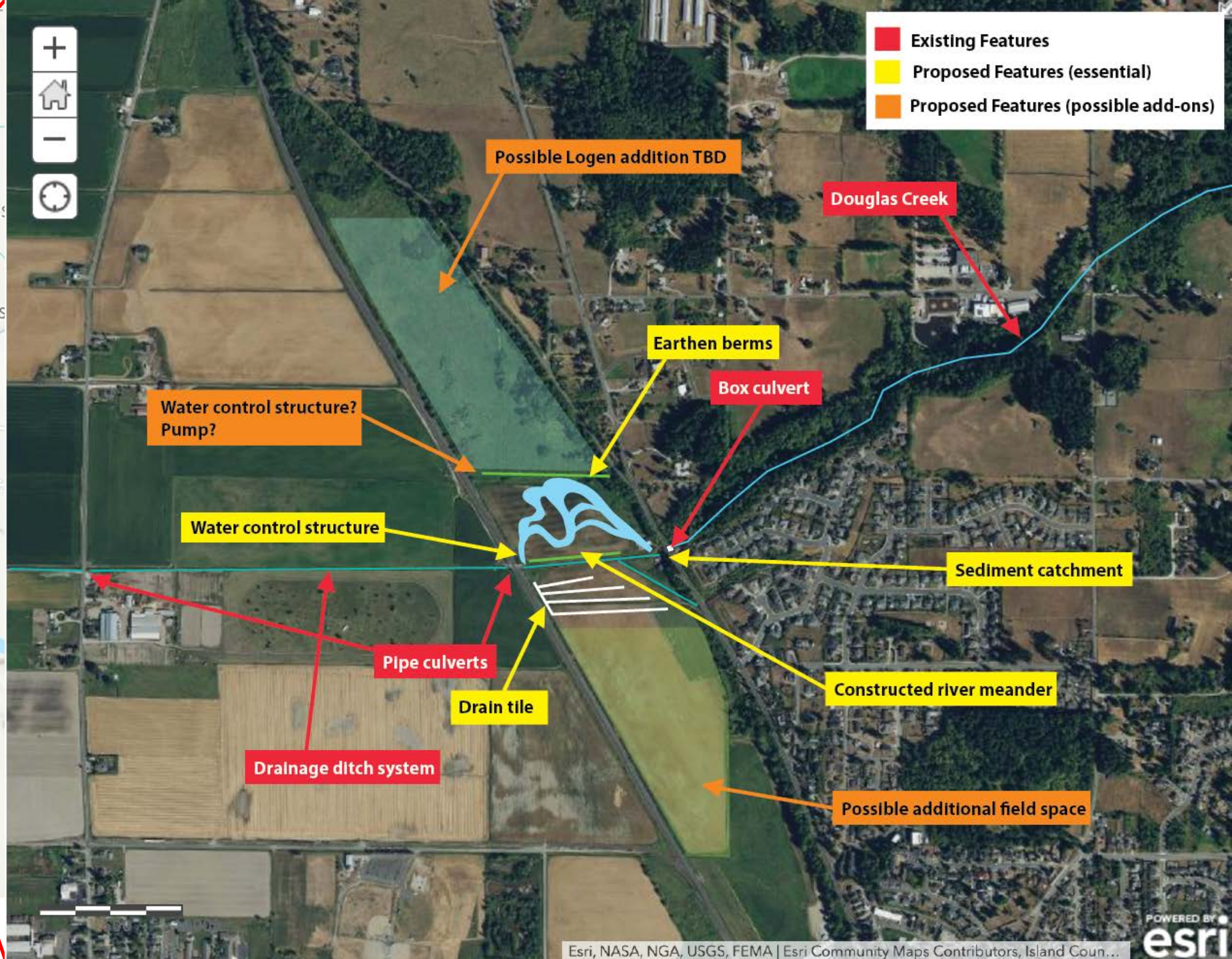


801 Second Avenue Suite 1150 | +1 (206) 269 0104
Seattle, Washington 98104 | +1 (206) 269 0098

www.cardno.com

NAD_1983_StatePlane_Washington_North_FIPS_4601_Feet

This map and all data contained within are supplied as is with no warranty. Cardno expressly disclaims responsibility for damages or liability from any claims that may arise out of the use or misuse of this map. It is the sole responsibility of the user to determine if the data on this map meets the user's needs. This map was not created as survey data, nor should it be used as such. It is





20,590 TREES, PLANTS AND SHRUBS PLANTED

Our planting projects help improve water quality, sequester carbon, decrease flooding, make farmland more resilient, and restore crucial habitat for salmon and other wildlife.



35 ACRES OF HABITAT PLANTED

As the population increases
in our community, we see the
vital need to invigorate our
land with native plants that
support a healthy
ecosystem.

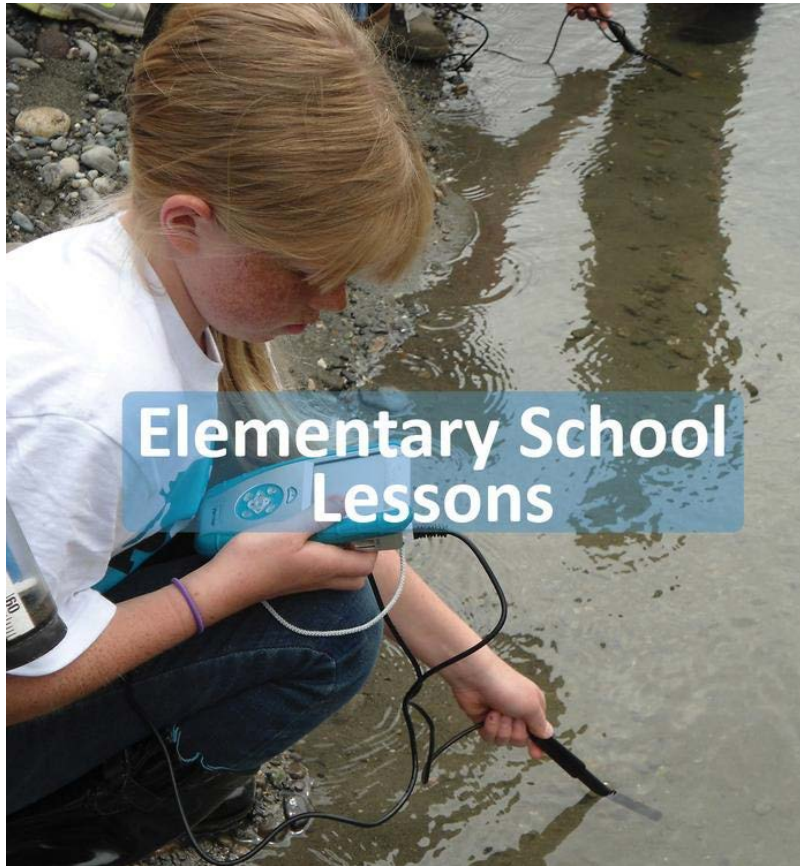
68 ACRES OF HABITAT MAINTAINED

We work hard to maintain the land we have invested in with our project partners and the community. Creating habitat that continues to thrive contributes to healthier wildlife populations.



310 IN-PERSON VISITS WITH LANDOWNERS

We help landowners find environmentally-friendly solutions using a non-regulatory approach.



Elementary School
Lessons



Service Learning



Middle School
Lessons



Envirothon

Youth Education

A photograph of a river flowing through a forest. In the foreground, a large, dark tree trunk is partially submerged in the water. The river flows towards the background, where a person is standing on the opposite bank. The surrounding forest is dense with green trees. The sky is overcast and grey.

1,136 YOUTH ENGAGED

We continued to adapt to the changing needs of teachers and students to provide watershed, salmon, and water quality education by adding virtual and asynchronous lessons.



Lawns to Lettuce



70 RAISED GARDEN BEDS INSTALLED

To help feed our community, we installed raised garden beds for private residents and community organizations who grow food for food banks and local residents.

Questions?

- Linda Lyshall, Executive Director
- Tara Luckie, Education and Outreach Program Manager
- Kristin Marshall, Habitat and Floodplain Management Program Director

