



SNOHOMISH  
COUNTY



---

# **Snohomish County Council 2022 Community Budget Forum**

**Overview of  
Executive's 2022 Recommended Budget  
October 11, 2021**

# Where Does the Money Come From? Sales Tax



For every **\$100** spent on qualified retail purchases, the average sales tax collected is

**\$10.40**



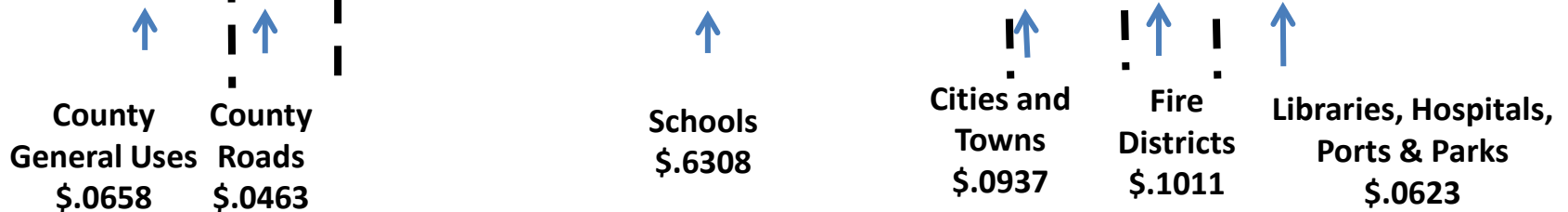
## Who gets what?

State of Washington.....	\$6.50
Cities or <b>County</b> .....	<b>\$1.00</b>
Cities or <b>County</b> for <b>Criminal Justice</b> .....	<b>\$0.10</b>
<b>County for Mental Health</b> .....	<b>\$0.10</b>
<b>County for Emergency Radio System</b> .....	<b>\$0.10</b>
Community Transit / Everett Transit.....	\$1.20
Regional Transit Authority.....	\$1.40
<b>TOTAL</b>	<b>\$10.40</b>



SNOHOMISH COUNTY

# Where Does the Money Come From? Property Tax



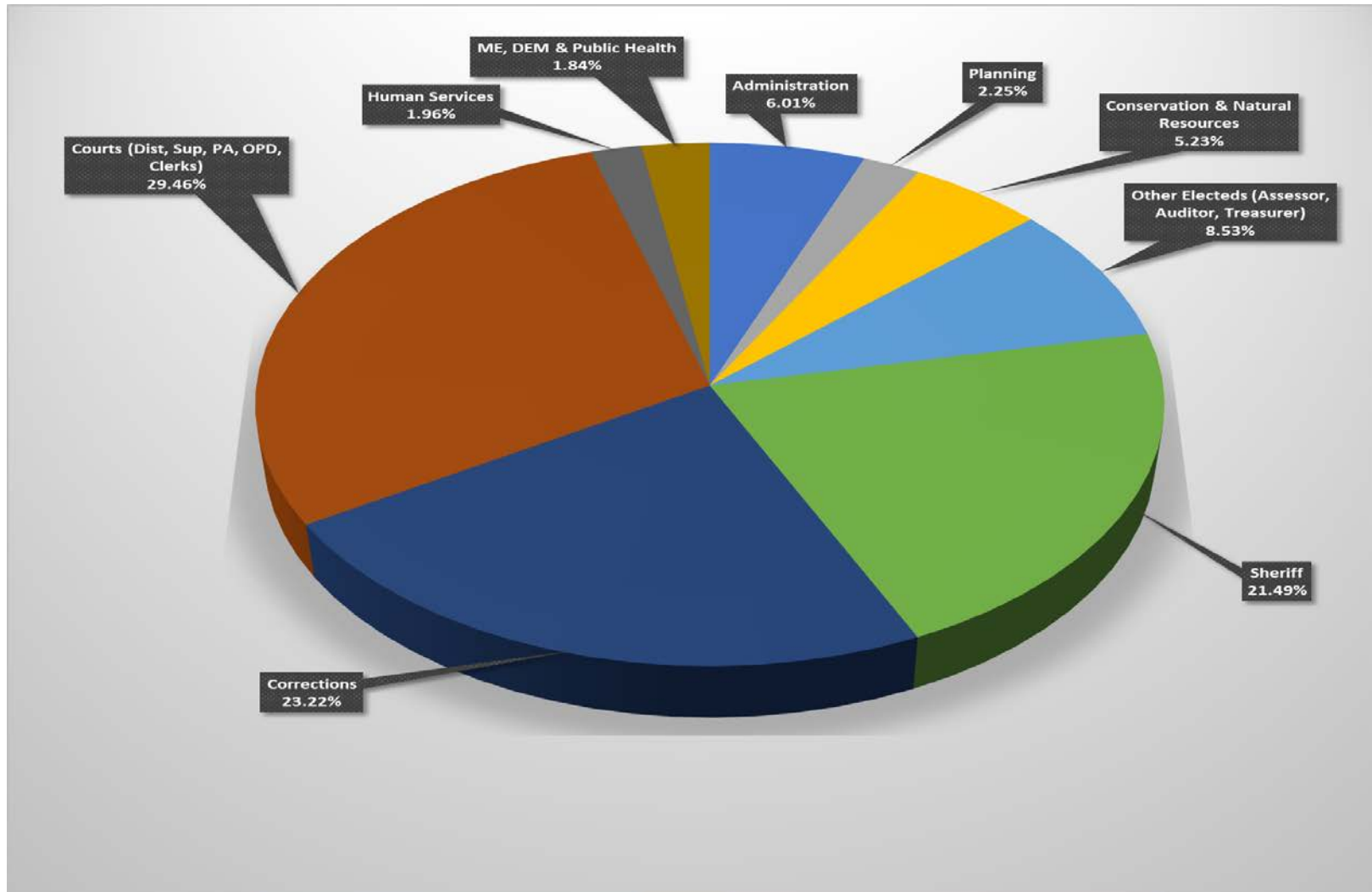
The Executive's 2022 Recommended Budget includes a 2.5% general property tax increase.

# Where Does the Money Go?



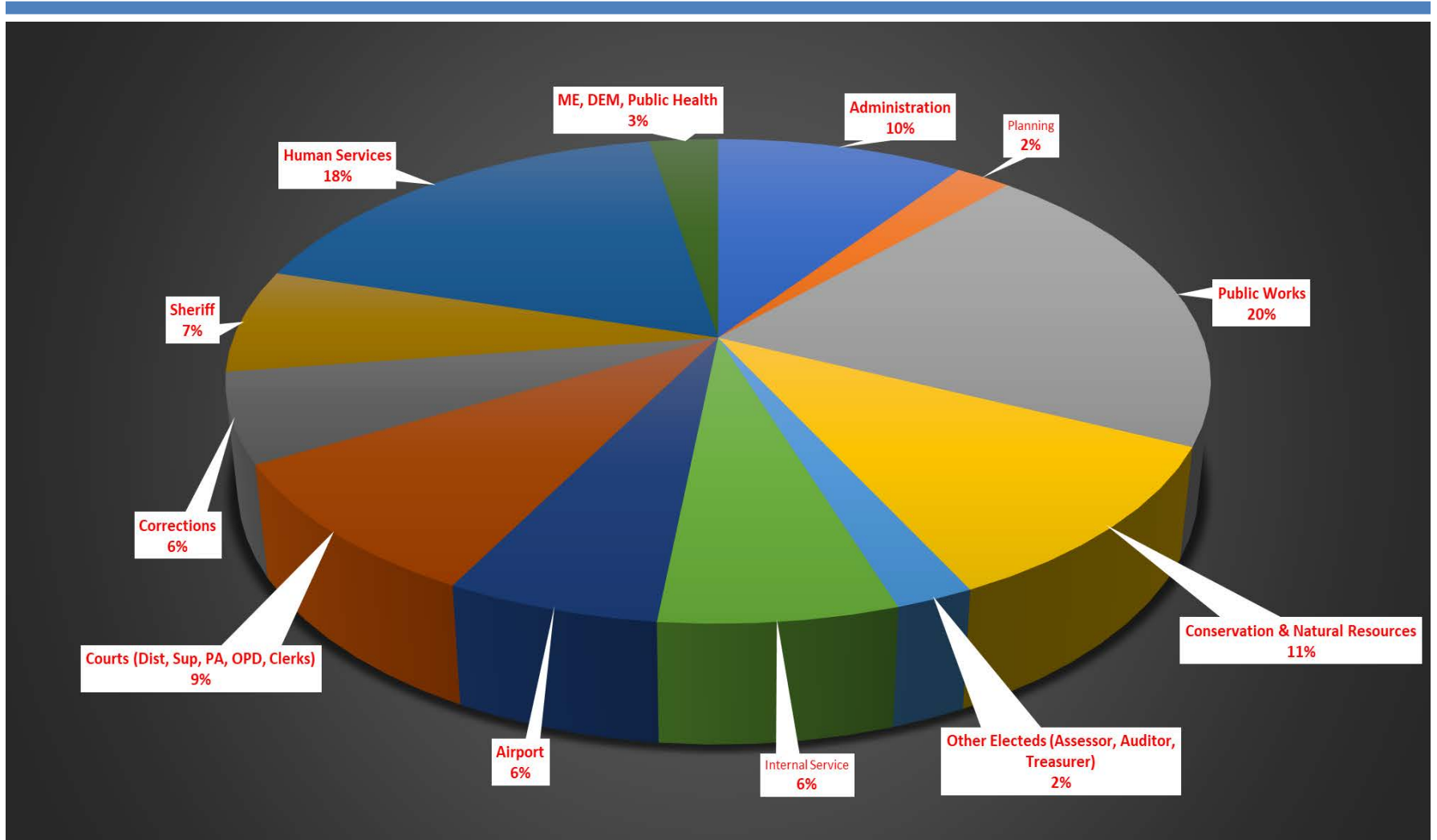
- **In 2022 the Executive’s Recommended Budget plans to spend just over \$1.25 billion dollars to provide a diverse array of services to the residents of Snohomish County. Of this amount, \$288.35 million is in the General Fund.**
- **Some of the services are provided regionally to all residents of the County such as:**
  - **Solid Waste, Elections, Prosecuting Attorney**
  - **Corrections, Superior Court, Evergreen Fair**
- **Other services are provided to residents of unincorporated Snohomish County such as:**
  - **Sheriff, Roads Maintenance and Construction**
  - **Surface Water Management, Parks and Recreation, Planning and Development Services**

# General Fund Budget





# COUNTY-WIDE BUDGET



## What are the challenges for 2022?



- Significant unknowns remain as we head into 2022 with regards to the continued impact of the COVID-19 pandemic. The need for additional services as a result is exacerbating existing problems such as homelessness and the opioid epidemics, which puts additional strain on public safety and human services programs and resources.
- The COVID-19 health emergency and secondary social and economic effects are continuing to change. The County is continually monitoring the situation to respond as necessary.
- A significant area of focus as we move into 2022 is implementing the spending plan for the funds received through the American Rescue Plan Act (ARP), to assist Snohomish County residents recover from the social and economic impact of the pandemic.



SNOHOMISH COUNTY

# What Are Your Priorities?



## Make Yourself Heard

### Send an E-Mail

[Contact.Council@snoco.org](mailto:Contact.Council@snoco.org)

### Send a Letter

Snohomish County Council  
3000 Rockefeller Ave. M/S 609  
Everett, Washington 98201