



Memorandum

Date: May 2, 2022

To: Council Chair Dunn
Council Vice-Chair Mead
Councilmember Nehring
Councilmember Wright
Councilmember Low

CC: Dave Somers, County Executive
Eric Parks, Deputy Executive
Lacy Harper, Executive Director
Tom Teigen, Conservation and Natural Resources Director

From: Gregg Farris, P.E., Surface Water Utility Director *GF*

Subject: SWM 2021 Year-End Reporting by Council District

Surface Water Management (SWM) is pleased to provide SWM's year-end reporting by council district of its 2021 revenues and expenditures, per SCC 25.05.045(1).

Summary

In 2021, SWM collected \$28,680,400 in service charges and spent \$31,706,400 on services and capital projects in our service district. Combining all revenues, SWM delivered more in services and capital projects than it collected in service charge revenue. SWM has accomplished this every year since our operations were consolidated into a single district in 2017 and we began fulfilling this reporting requirement.

SWM is able to deliver more in services and capital projects than we collect in service charges through the aggressive pursuit of other revenue sources. In 2021, SWM collected \$2,343,000 in grant revenues for programs delivered in the county this year. To stretch service charges further, SWM partnered to share costs with 19 different local cities, tribes, and regional organizations.

The approach of using a single consolidated district allows SWM to address needs and deliver projects across the county in our service district. In practice, this means that one council district could be home to more projects or a major project in one year, while another council district will be home to more projects in the next. Over the course of several years, these projects rotate throughout the county according to need and capacity. The result is that SWM has spent at least as much in each council district over the past five years as it has collected in utility revenues within each council district. The attached exhibits clearly illustrate this result. In each of Council Districts 1, 2, 3, and 5, SWM has spent an average of over \$1 million per year more than was collected in each of these districts. In Council District 4, SWM has spent roughly an equivalent amount to what was collected during the past five years. SWM has begun working toward implementing additional projects in Council District 4 in the coming years.

This rotation of major projects is also reflected in the attached exhibits, which show significantly increased expenditures in District 2 in 2017 while SWM delivered the multimillion-dollar Smith Island restoration project, and again in 2018 in District 3 as SWM delivered the Ash and Maple Road flooding project. Likewise, in 2020, SWM

delivered major projects in Council Districts 1 and 4, including the Logan Park LID, the Meadow Creek Park drainage retrofit, and the purchase of repetitive flood loss properties with federal dollars. Smaller projects likewise rotate throughout the county according to need and capacity.

In 2021, SWM spent a total of \$3,026,000 more than what was collected for utility fees in Council Districts 1, 2, and 5. In Council District 3, SWM spent slightly less than what was collected, which included a contribution of over \$500,000 to the Meadowdale Park project coordinated by the Parks & Recreation division. In Council District 4, SWM spent less than what was collected in 2021, though this was roughly equivalent to the amount spent over what was collected in 2020.

In 2021, SWM constructed 9 projects at a total construction cost of \$3.41 million. These projects addressed road flooding, fish passage, failing pipes, and water quality issues at various locations in all five council districts. The [2021 SWM Highlights report](#) contains additional details about specific accomplishments in 2021 for each of the four main SWM service areas: water quality, salmon and marine habitat, drainage and road flooding, and river flooding.

Exhibits

This package includes five exhibits illustrating SWM's 2021 expenditures and service charge revenues by council district. For these exhibits, the Road Fund in-kind payment revenues and expenditures are displayed separately. This was done because SWM does not have full control over where Public Works performs maintenance and capital projects and because including it would not increase transparency about where constituents' service charges are being spent. The Road Fund in-kind payment is displayed beginning in 2019.

Exhibit 1: The upper table summarizes the utility charge revenues collected by SWM within each council district in 2021. The lower tables summarize SWM's expenditures in 2021 according to: (1) capital and non-capital expenditures, and (2) each of the major revenue sources that supported all expenditures.

Exhibit 2: This chart directly compares total SWM utility charge revenues and total expenditures in 2021 for each council district.

Exhibit 3: This chart directly compares average SWM utility charge revenues and average total expenditures for each council district over the life of having a consolidated district, 2017 to 2021.

Exhibit 4: This chart shows the total expenditures by SWM within each council district for each of the past five years (2017-2021).

Exhibit 5: Maps are provided of the entire county and for each individual council district that show the locations of SWM capital projects, as well as SWM non-capital services that can be tracked to specific geographic locations. While the services and projects shown in these maps are tracked to specific locations, roughly half of SWM's programs are considered countywide programs. SWM has made assumptions in order to allocate these expenditures across the five council districts.

Exhibit 1

2021 SWM Utility Charge Revenues

SWM Utility Service Charges	Council District 1	Council District 2	Council District 3	Council District 4	Council District 5	Roads in-Kind	Total
Utility Charges	\$ 4,799,500	\$ 1,058,050	\$ 4,164,680	\$ 5,546,900	\$ 6,942,630	\$ 6,168,640	\$ 28,680,400

2021 SWM Utility Expenditures

2021 Expenditures	Council District 1	Council District 2	Council District 3	Council District 4	Council District 5	Subtotal	Total Including Road Fund in-Kind Payment of \$6,168,641
Capital Projects Expenditures	\$ 2,933,950	\$ 375,840	\$ 1,521,740	\$ 1,481,470	\$ 4,362,960	\$ 10,675,960	
Non-Capital Services Expenditures	\$ 3,367,900	\$ 872,120	\$ 2,454,230	\$ 3,154,810	\$ 5,012,740	\$ 14,861,800	
Total SWM Expenditures	\$ 6,301,850	\$ 1,247,960	\$ 3,975,970	\$ 4,636,280	\$ 9,375,700	\$ 25,537,760	\$ 31,706,400

2021 SWM Utility Expenditures by Revenue Source

Expenditures by Revenue Source	Council District 1	Council District 2	Council District 3	Council District 4	Council District 5	Subtotal	Total Including Road Fund in-Kind Payment of \$6,168,641
SWM Utility Charges	\$ 5,259,650	\$ 1,157,140	\$ 3,155,020	\$ 3,804,830	\$ 7,314,750	\$ 20,691,390	
SWM Utility Charges - UGA	\$ 27,030	\$ 5,950	\$ 559,180	\$ 540,850	\$ 50,100	\$ 1,183,110	
Grants	\$ 546,940	\$ 34,210	\$ 98,500	\$ 73,120	\$ 1,590,350	\$ 2,343,120	
REET II	\$ -	\$ -	\$ -	\$ -	\$ -	\$ -	
Road Fund	\$ 148,060	\$ 20,560	\$ 44,800	\$ 59,700	\$ 171,420	\$ 444,540	
Other – Shared Costs	\$ 320,170	\$ 30,100	\$ 118,470	\$ 157,780	\$ 249,080	\$ 875,600	
Total	\$ 6,301,850	\$ 1,247,960	\$ 3,975,970	\$ 4,636,280	\$ 9,375,700	\$ 25,537,760	\$ 31,706,400

*UGA utility service charges were assessed under the former UGA surcharge which expired at the end of 2019.

Exhibit 2

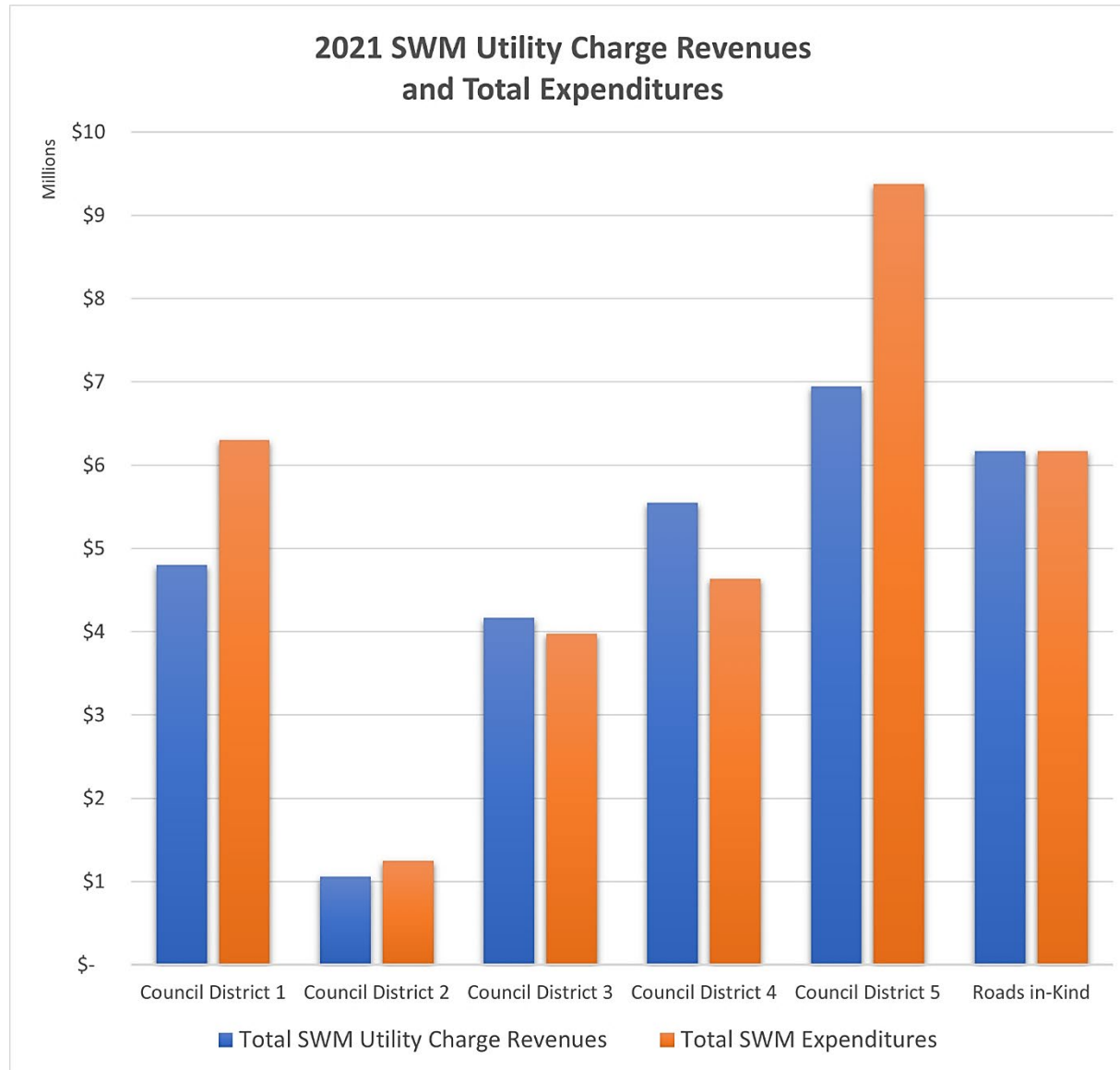


Exhibit 3

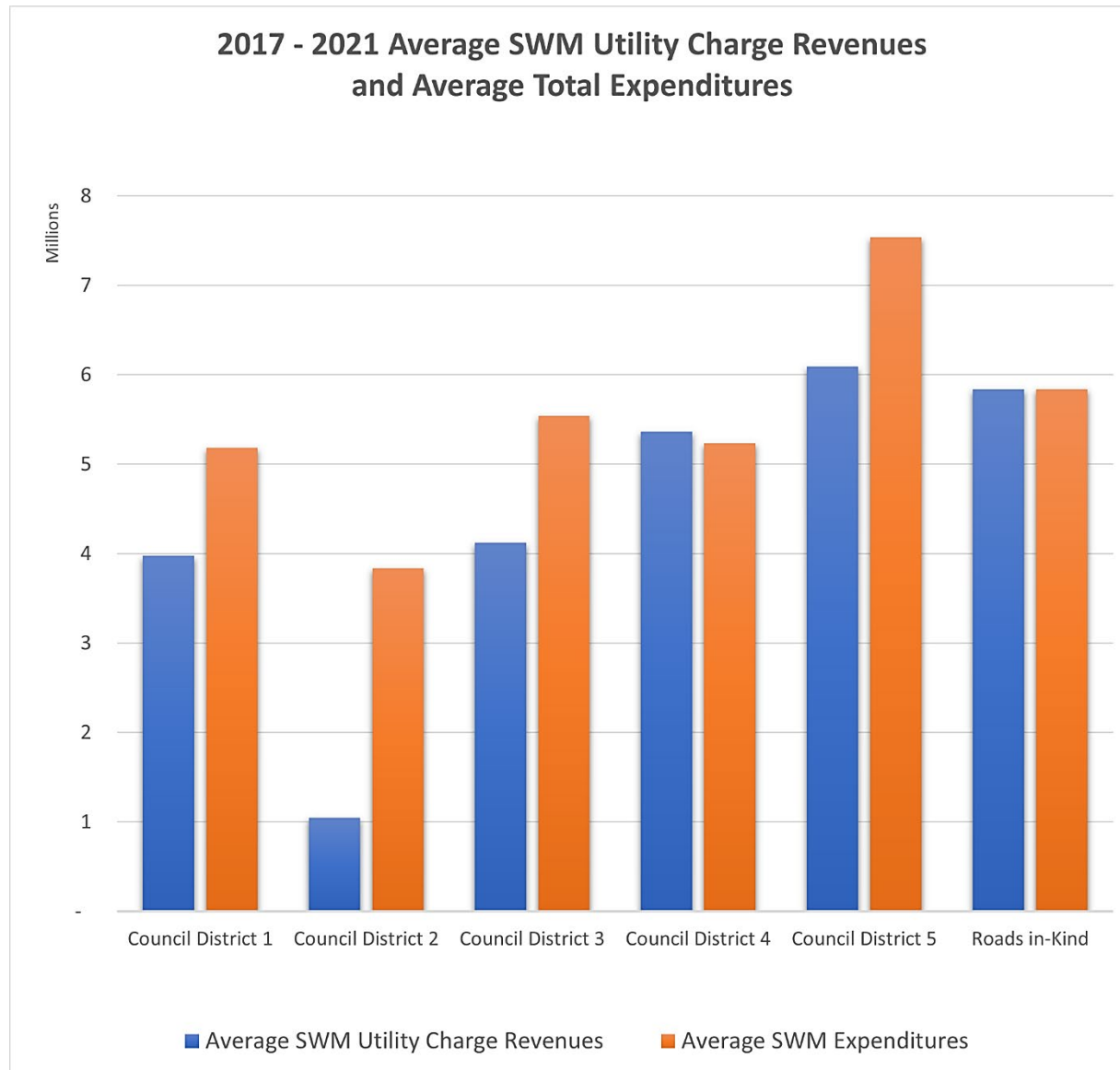
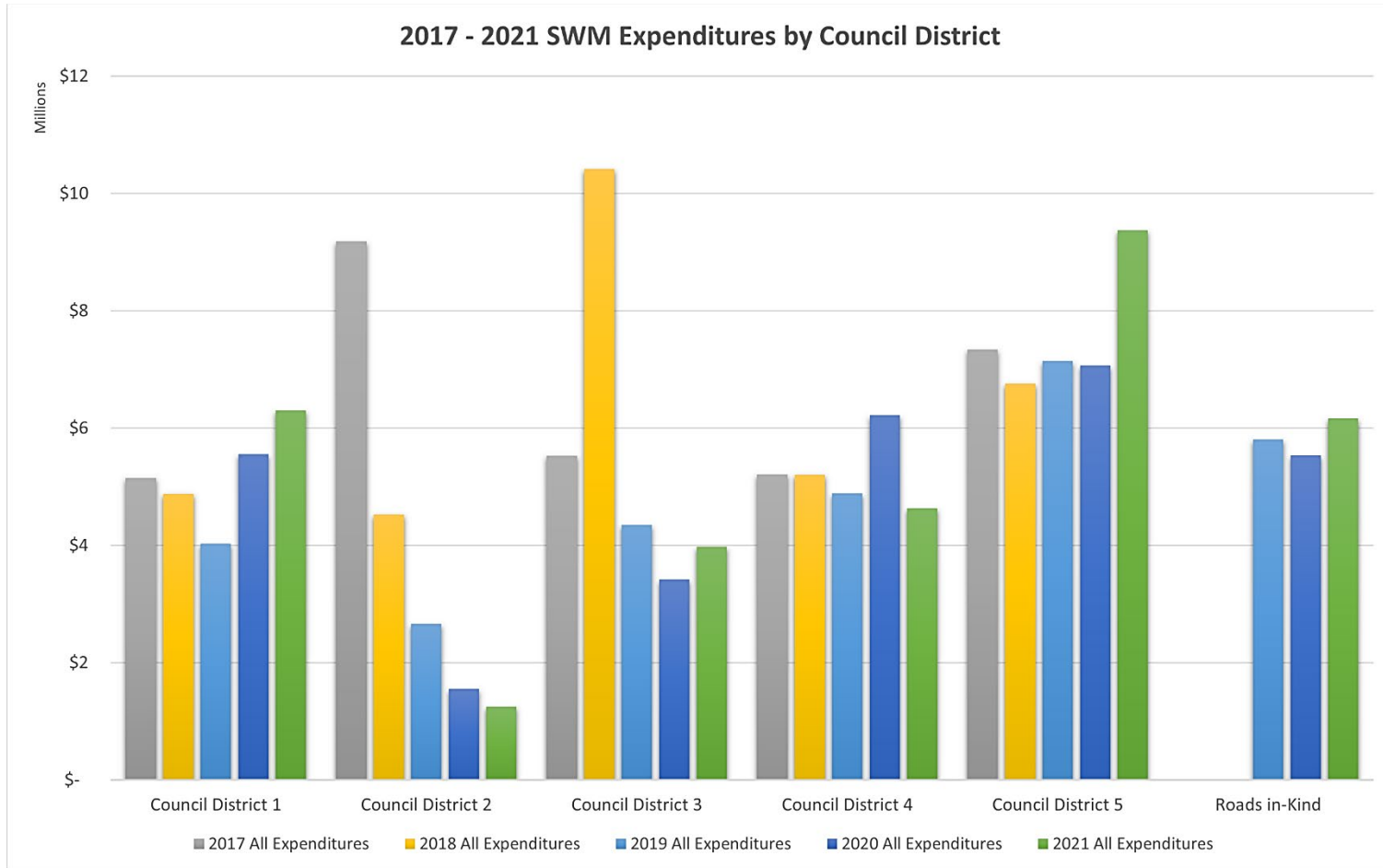


Exhibit 4



SWM 2021 Year-End Reporting of SWM Revenues and Expenditures by Council District



Exhibit 5 2021 Capital Projects and SWM Service Maps

Countywide Service Provided in 2021

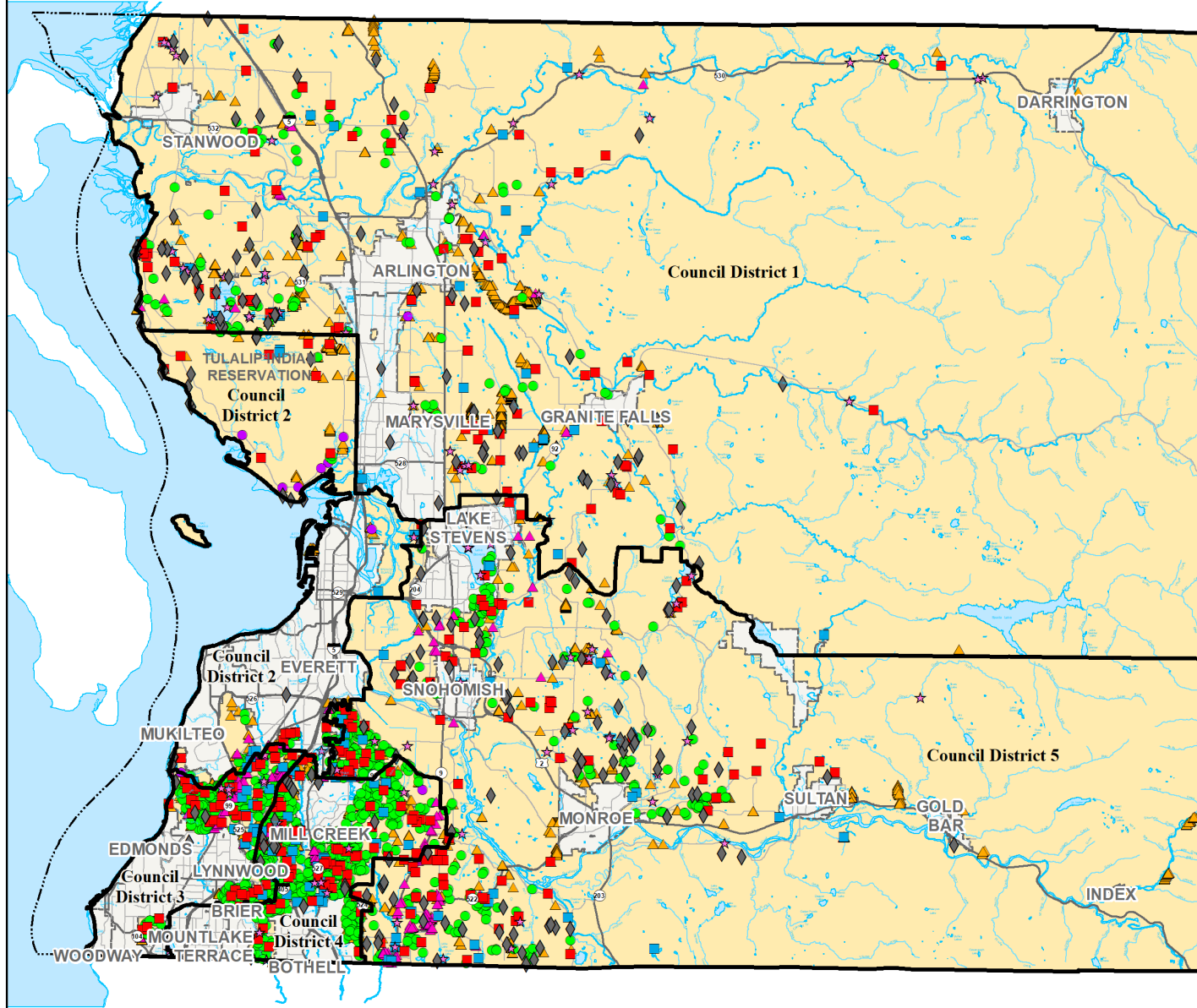
- NPDES Water Quality Facilities Inspected (1,259)
- Non-NPDES Water Quality Facilities Inspected (13)
- Drainage Complaints (299)
- Water Quality Complaints (117)
- ★ Water Quality Monitoring Locations (100)
- ▲ Drainage Inventory Collected (6,071)
- ▲ Businesses Inspected (231), follow-up inspections (94)
- ◆ Savvy Septic Grants and Loans (0)
- ◆ Septic Inspection Rebates (229)
- Incorporated
- Unincorporated County



0 1 2 4
Miles

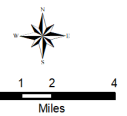
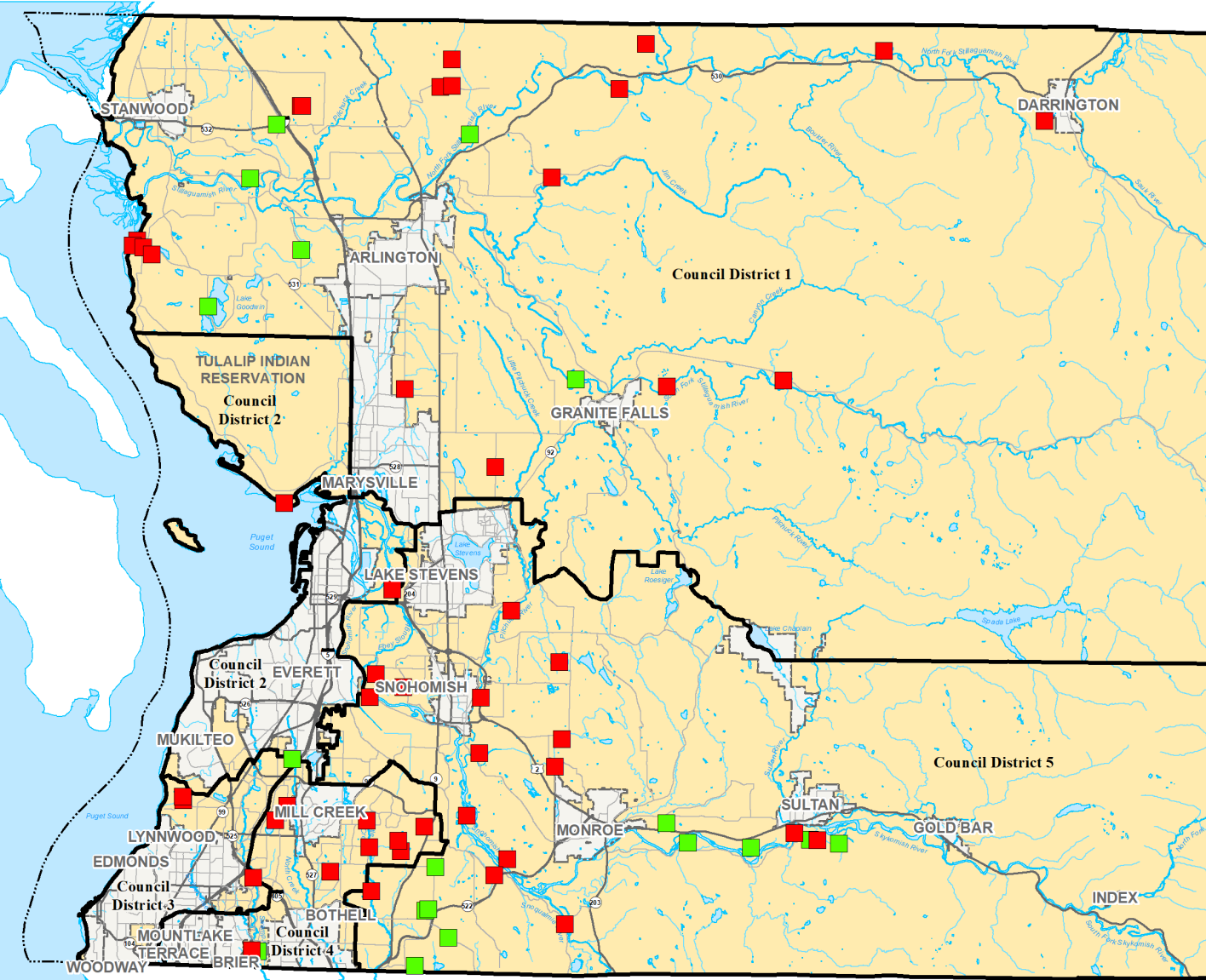


All maps, data, and information set forth herein ("Data"), are for illustrative purposes only and are not to be considered an official citation to, or representation of, the Snohomish County Code. Amendments and updates to the Data, together with other applicable County Code provisions, may apply which are not depicted herein. Snohomish County makes no representation or warranty concerning the content, accuracy, currency, completeness or quality of the Data contained herein and expressly disclaims any warranty of merchantability or fitness for any particular purpose. All persons accessing or otherwise using this Data assume all responsibility for use thereof and agree to hold Snohomish County harmless from and against any damages, loss, claim or liability arising out of any error, defect or omission contained within said Data. Washington State Law, Ch. 42.56 RCW, prohibits state and local agencies from providing access to lists of individuals intended for use for commercial purposes and, thus, no commercial use may be made of any Data comprising lists of individuals contained herein.



Countywide Capital Projects in 2021

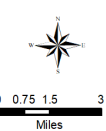
- In Design (48)
- Constructed or Implemented (18)
- Incorporated
- Unincorporated County



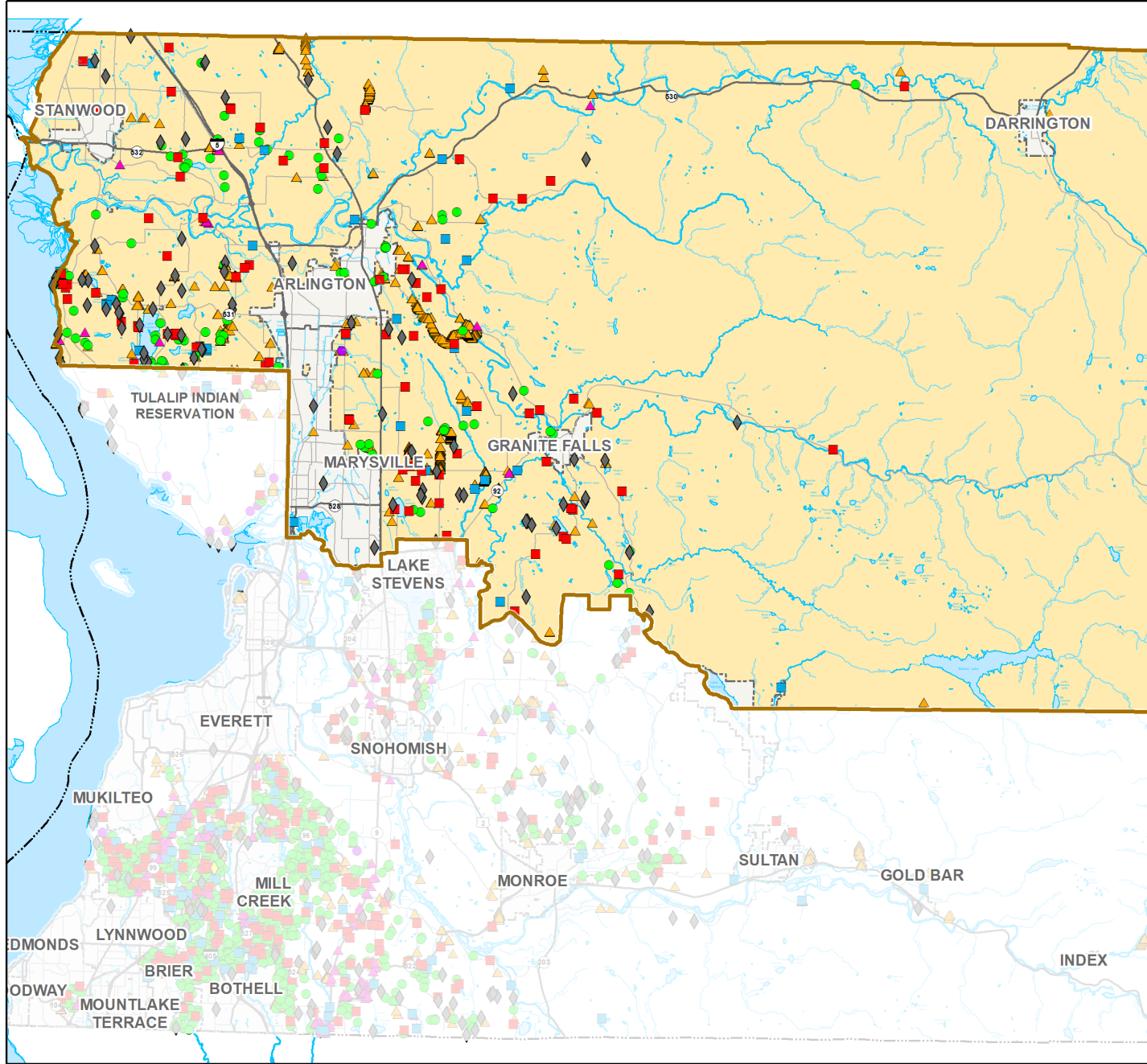
All maps, data, and information set forth herein ("Data") are for illustrative purposes only and are not to be considered an official citation to, or representation of, the Snohomish County Code. Amendments and updates to the Data, together with other applicable County Code provisions, may apply which are not depicted herein. Snohomish County makes no representation or warranty concerning the content, accuracy, currency, completeness or quality of the Data contained herein and expressly disclaims any warranty of merchantability or fitness for any particular purpose. All persons accessing or otherwise using this Data assume all responsibility for use thereof and agree to hold Snohomish County harmless from and against any damages, loss, claim or liability arising out of any error, defect or omission contained within said Data. Washington State Law, Ch. 42.56 RCW, prohibits state and local agencies from providing access to lists of individuals intended for use for commercial purposes and, thus, no commercial use may be made of any Data comprising lists of individuals contained herein.

Countywide Service Provided within Council District 1 in 2021

- NPDES Water Quality Facilities Inspected (92)
- Non-NPDES Water Quality Facilities Inspected (1)
- Drainage Complaints (82)
- Water Quality Complaints (32)
- ★ Water Quality Monitoring Locations (45)
- ▲ Drainage Inventory Collected (2,512)
- ▲ Businesses Inspected (19)
- ◆ Savvy Septic Grants and Loans (0)
- ◆ Septic Inspection Rebates (79)
- County Council District 1
- Unincorporated County



All maps, data, and information set forth herein ("Data"), are for illustrative purposes only and are not to be considered an official citation to, or representation of, the Snohomish County Code. Amendments and updates to the Data, together with other applicable County Code provisions, may apply which are not depicted herein. Snohomish County makes no representation or warranty concerning the content, accuracy, currency, completeness or quality of the Data contained herein and expressly disclaims any warranty of merchantability or fitness for any particular purpose. All persons accessing or otherwise using this Data assume all responsibility for use thereof and agree to hold Snohomish County harmless from and against any damages, loss, claim or liability arising out of any error, defect or omission contained within said Data. Washington State Law, Ch. 42.56 RCW, prohibits state and local agencies from providing access to lists of individuals intended for use for commercial purposes and, thus, no commercial use may be made of any Data comprising lists of individuals contained herein.



SWM Capital Projects in 2021 Council District 1

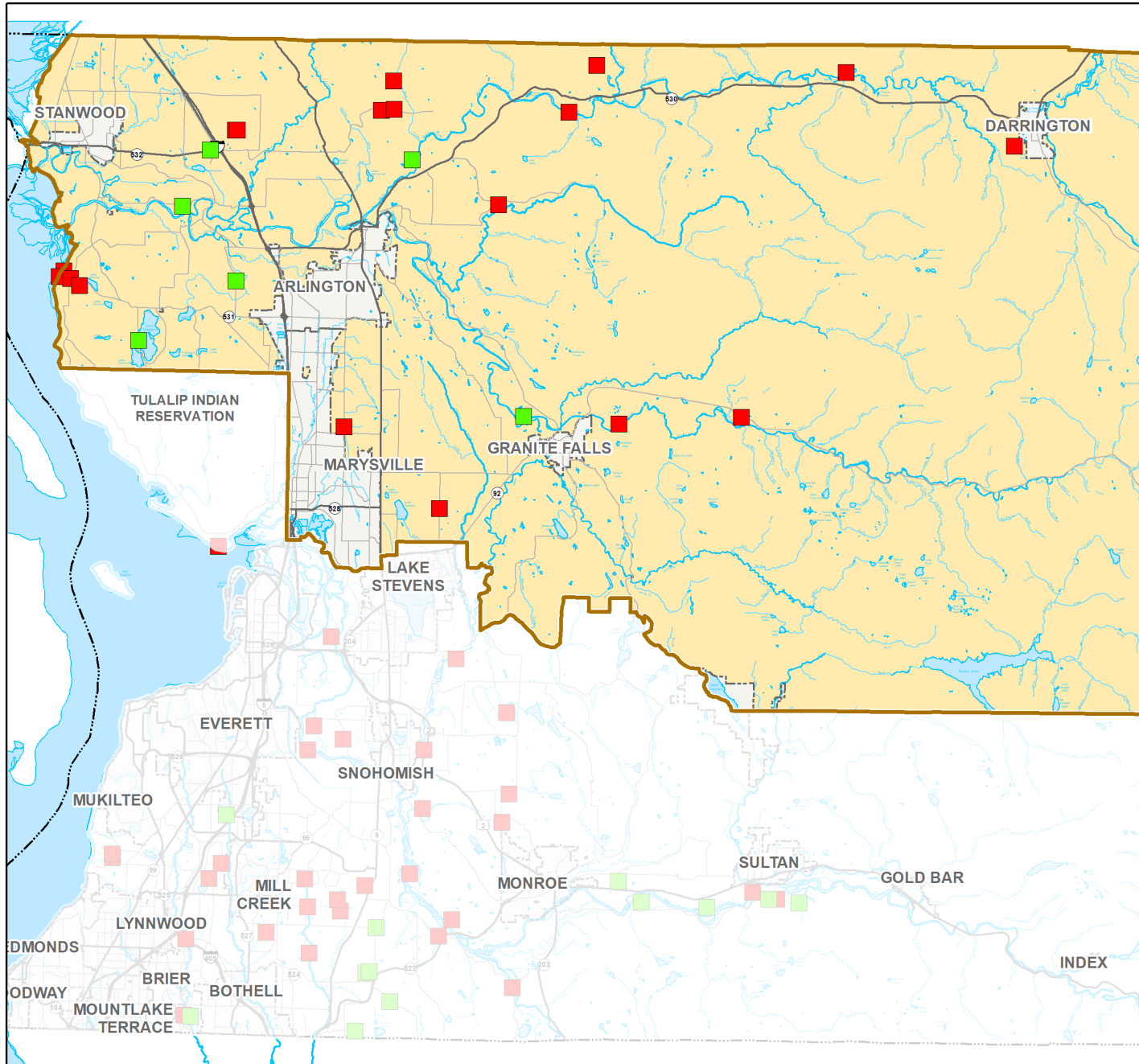
- In Design (18)
- Constructed or Implemented (6)
- County Council District 1
- Unincorporated County



0 0.75 1.5 3
Miles




All maps, data, and information set forth herein ("Data"), are for illustrative purposes only and are not to be considered an official citation to, or representation of, the Snohomish County Code. Amendments and updates to the Data, together with other applicable County Code provisions, may apply which are not depicted herein. Snohomish County makes no representation or warranty concerning the content, accuracy, currency, completeness or quality of the Data contained herein and expressly disclaims any warranty of merchantability or fitness for any particular purpose. All persons accessing or otherwise using this Data assume all responsibility for use thereof and agree to hold Snohomish County harmless from and against any damages, loss, claim or liability arising out of any error, defect or omission contained within said Data. Washington State Law, Ch. 42.56 RCW, prohibits state and local agencies from providing access to lists of individuals intended for use for commercial purposes and, thus, no commercial use may be made of any Data comprising lists of individuals contained herein.




Countywide Service Provided within Council District 2 in 2021

- NPDES Water Quality Facilities Inspected (29)
- Non-NPDES Water Quality Facilities Inspected (7)
- Drainage Complaints (14)
- Water Quality Complaints (7)
- ★ Water Quality Monitoring Locations (2)
- ▲ Drainage Inventory Collected (1,162)
- ▲ Businesses Inspected (10)
- ◆ Savvy Septic Grants and Loans (0)
- ◆ Septic Inspection Rebates (23)
- County Council District 2
- Unincorporated County

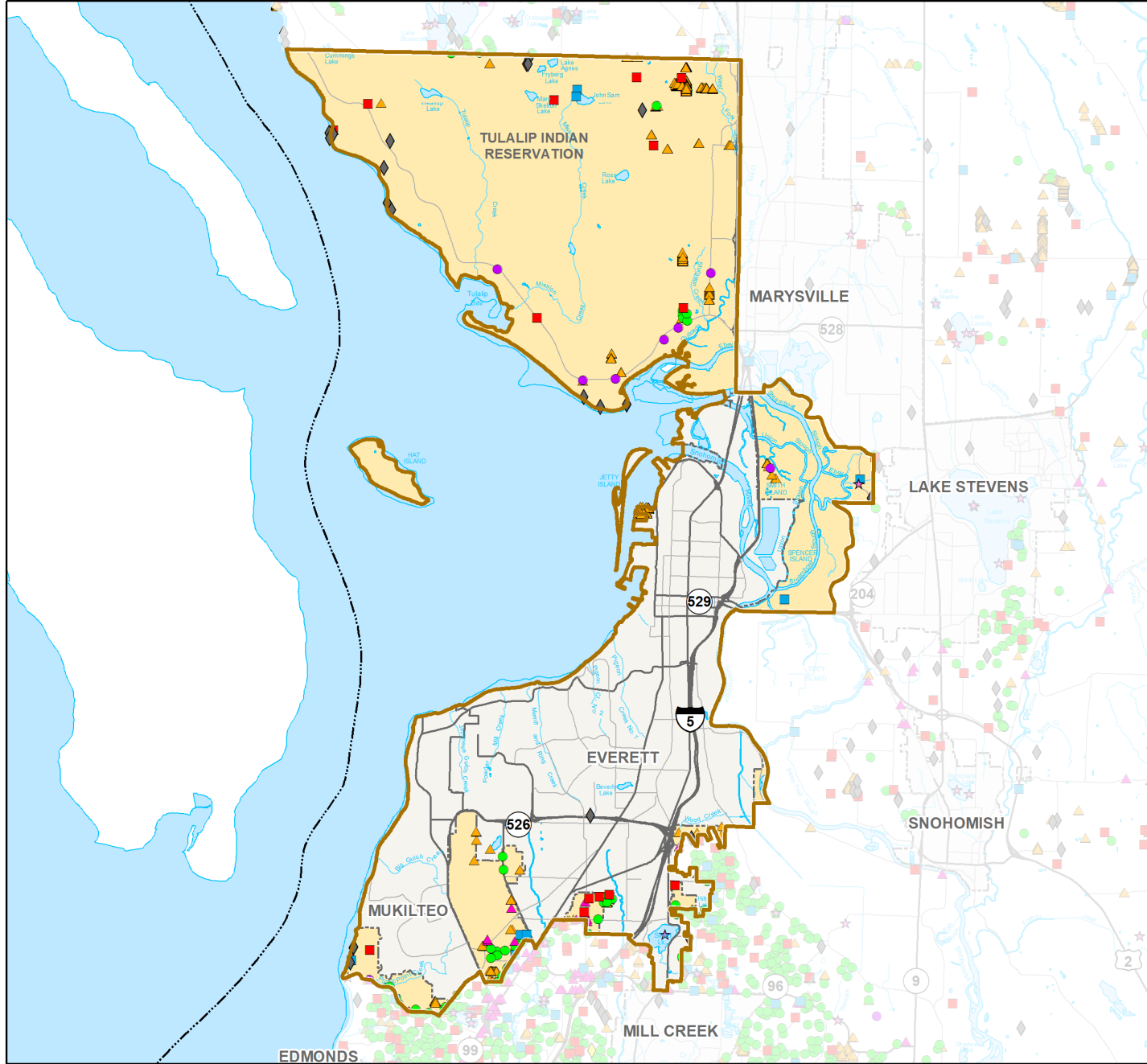


0 0.5 1 2
Miles



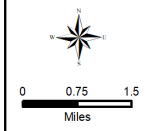
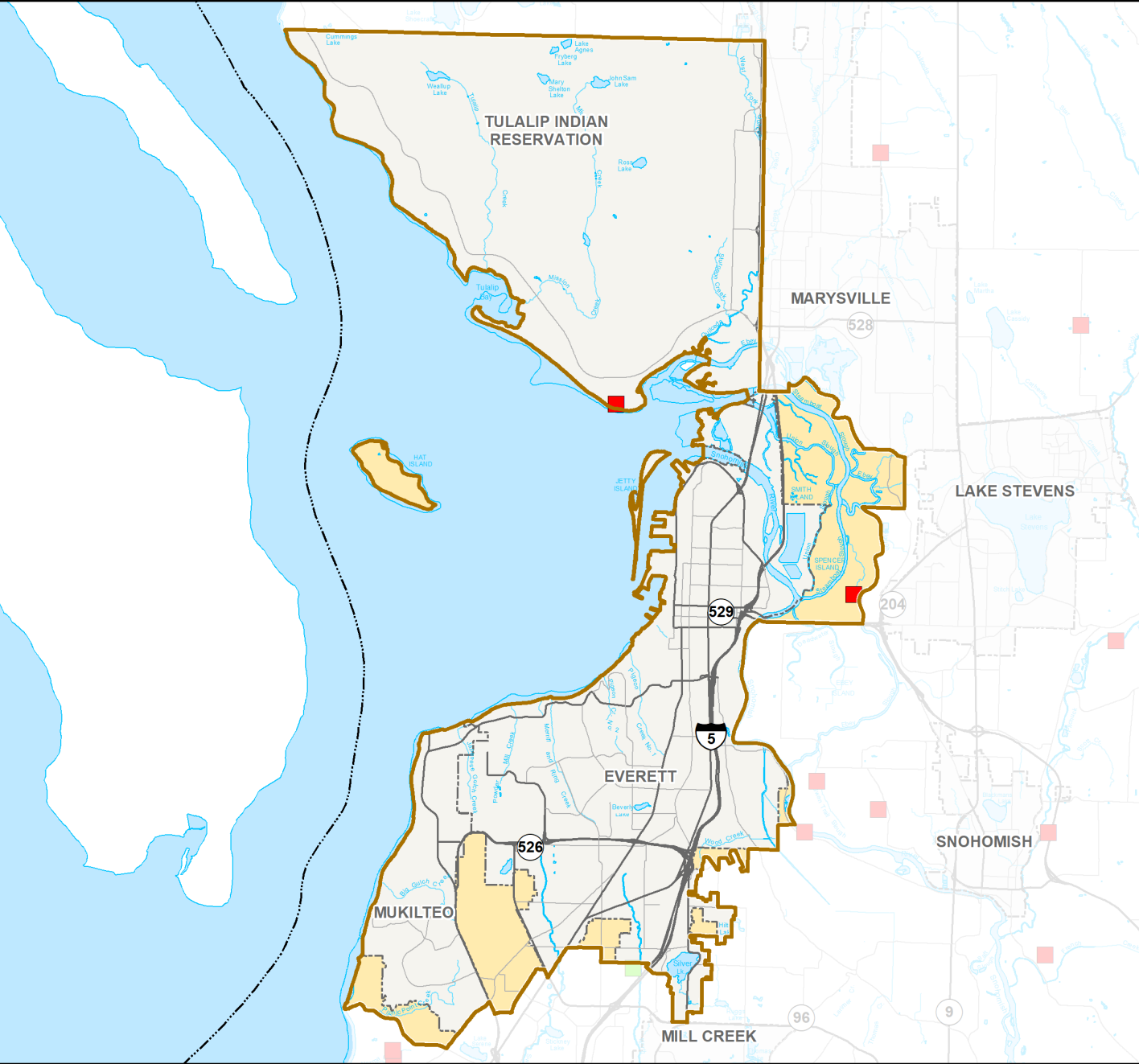
Snohomish County
Conservation &
Natural Resources
Surface Water Management
425-388-3464

All maps, data, and information set forth herein ("Data"), are for illustrative purposes only and are not to be considered an official citation to, or representation of, the Snohomish County Code. Amendments and updates to the Data, together with other applicable County Code provisions, may apply which are not depicted herein. Snohomish County makes no representation or warranty concerning the content, accuracy, currency, completeness or quality of the Data contained herein and expressly disclaims any warranty of merchantability or fitness for any particular purpose. All persons accessing or otherwise using this Data assume all responsibility for use thereof and agree to hold Snohomish County harmless from and against any damages, loss, claim or liability arising out of any error, defect or omission contained within said Data. Washington State Law, Ch. 42.56 RCW, prohibits state and local agencies from providing access to lists of individuals intended for use for commercial purposes and, thus, no commercial use may be made of any Data comprising lists of individuals contained herein.



SWM Capital Projects in 2021 Council District 2


- In Design (2)
- Constructed or Implemented (0)
- County Council District 2
- Unincorporated County

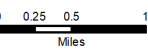



All maps, data, and information set forth herein ("Data"), are for illustrative purposes only and are not to be considered an official citation to, or representation of, the Snohomish County Code. Amendments and updates to the Data, together with other applicable County Code provisions, may apply which are not depicted herein. Snohomish County makes no representation or warranty concerning the content, accuracy, currency, completeness or quality of the Data contained herein and expressly disclaims any warranty of merchantability or fitness for any particular purpose. All persons accessing or otherwise using this Data assume all responsibility for use thereof and agree to hold Snohomish County harmless from and against any damages, loss, claim or liability arising out of any error, defect or omission contained within said Data. Washington State Law, Ch. 42.56 RCW, prohibits state and local agencies from providing access to lists of individuals intended for use for commercial purposes and, thus, no commercial use may be made of any Data comprising lists of individuals contained herein.

Countywide Service Provided within Council District 3 in 2021

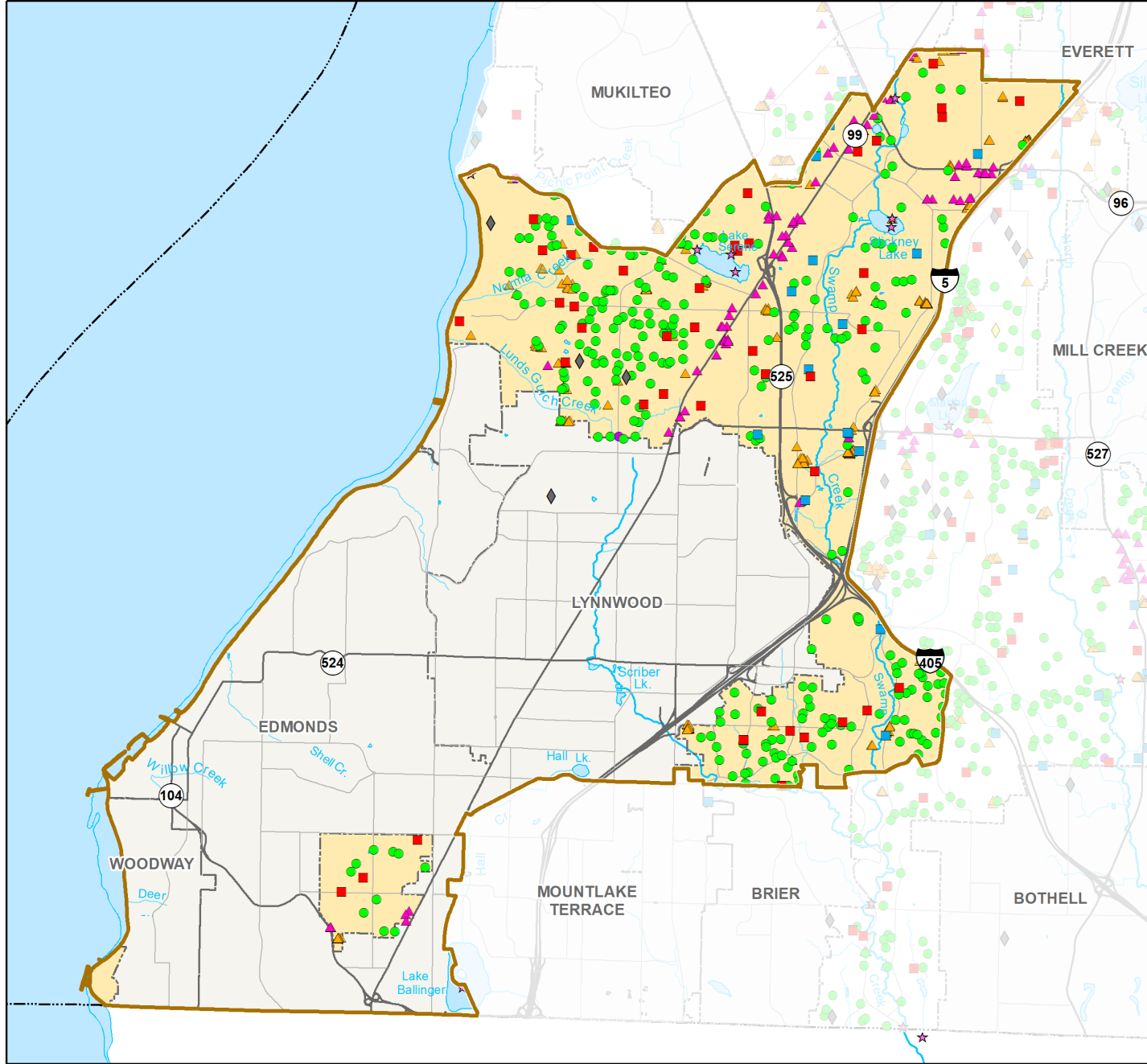
- NPDES Water Quality Facilities Inspected (277)
- Non-NPDES Water Quality Facilities Inspected (2)
- Drainage Complaints (44)
- Water Quality Complaints (16)
- ★ Water Quality Monitoring Locations (8)
- ▲ Drainage Inventory Collected (323)
- ▲ Businesses Inspected (75)
- ◆ Savvy Septic Grants and Loans (0)
- ◆ Septic Inspection Rebates (4)
- County Council District 3
- Unincorporated County





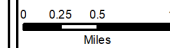


All maps, data, and information set forth herein ("Data"), are for illustrative purposes only and are not to be considered an official citation to, or representation of, the Snohomish County Code. Amendments and updates to the Data, together with other applicable County Code provisions, may apply which are not depicted herein. Snohomish County makes no representation or warranty concerning the content, accuracy, currency, completeness or quality of the Data contained herein and expressly disclaims any warranty of merchantability or fitness for any particular purpose. All persons accessing or otherwise using this Data assume all responsibility for use thereof and agree to hold Snohomish County harmless from and against any damages, loss, claim or liability arising out of any error, defect or omission contained within said Data. Washington State Law, Ch. 42.56 RCW, prohibits state and local agencies from providing access to lists of individuals intended for use for commercial purposes and, thus, no commercial use may be made of any Data comprising lists of individuals contained herein.

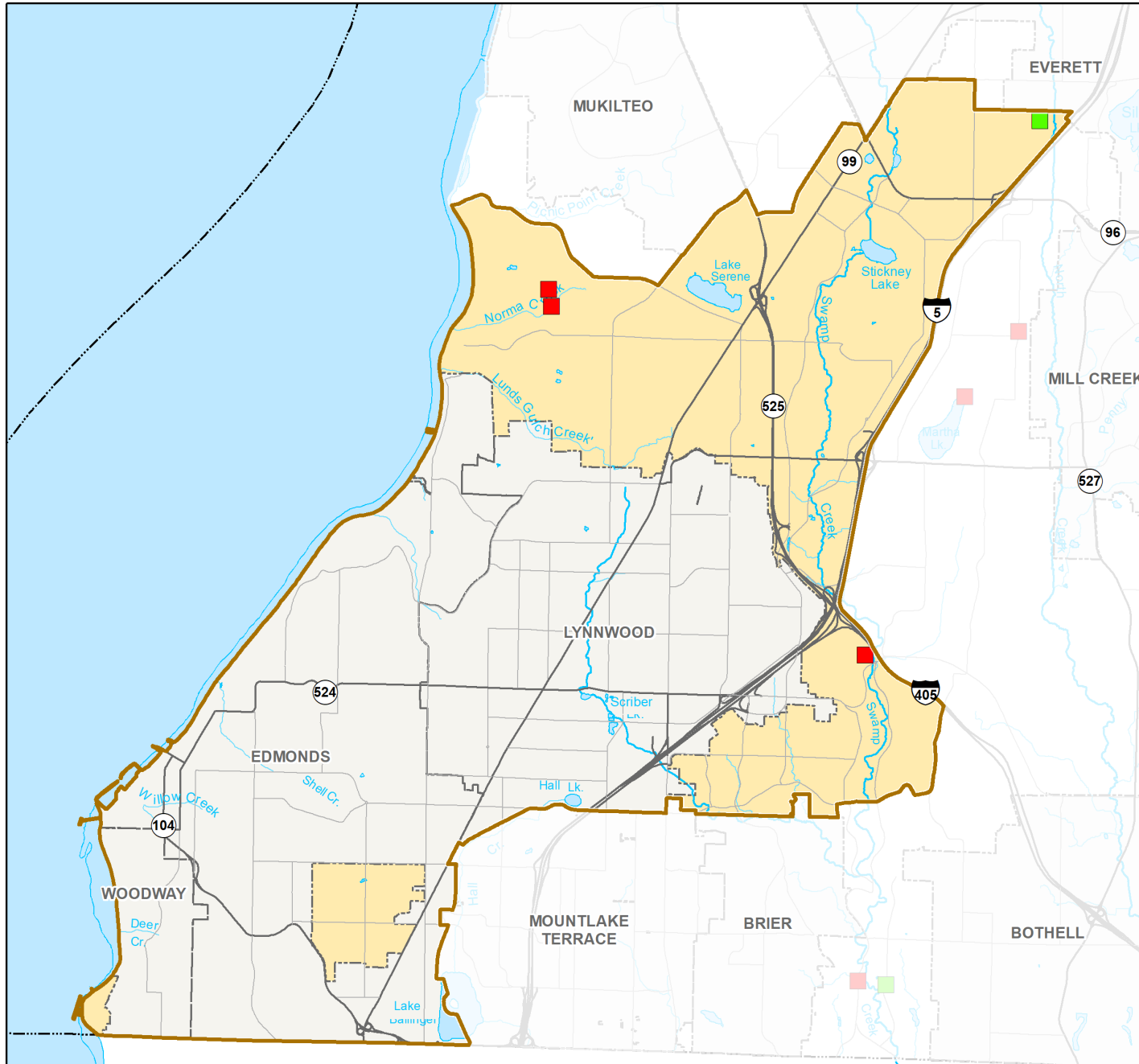


SWM Capital Projects in 2021 Council District 3

- In Design (3)
- Constructed or Implemented (1)
- County Council District 3
- Unincorporated County

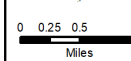


All maps, data, and information set forth herein ("Data"), are for illustrative purposes only and are not to be considered an official citation to, or representation of, the Snohomish County Code. Amendments and updates to the Data, together with other applicable County Code provisions, may apply which are not depicted herein. Snohomish County makes no representation or warranty concerning the content, accuracy, currency, completeness or quality of the Data contained herein and expressly disclaims any warranty of merchantability or fitness for any particular purpose. All persons accessing or otherwise using this Data assume all responsibility for use thereof and agree to hold Snohomish County harmless from and against any damages, loss, claim or liability arising out of any error, defect or omission contained within said Data. Washington State Law, Ch. 42.56 RCW, prohibits state and local agencies from providing access to lists of individuals intended for use for commercial purposes and, thus, no commercial use may be made of any Data comprising lists of individuals contained herein.

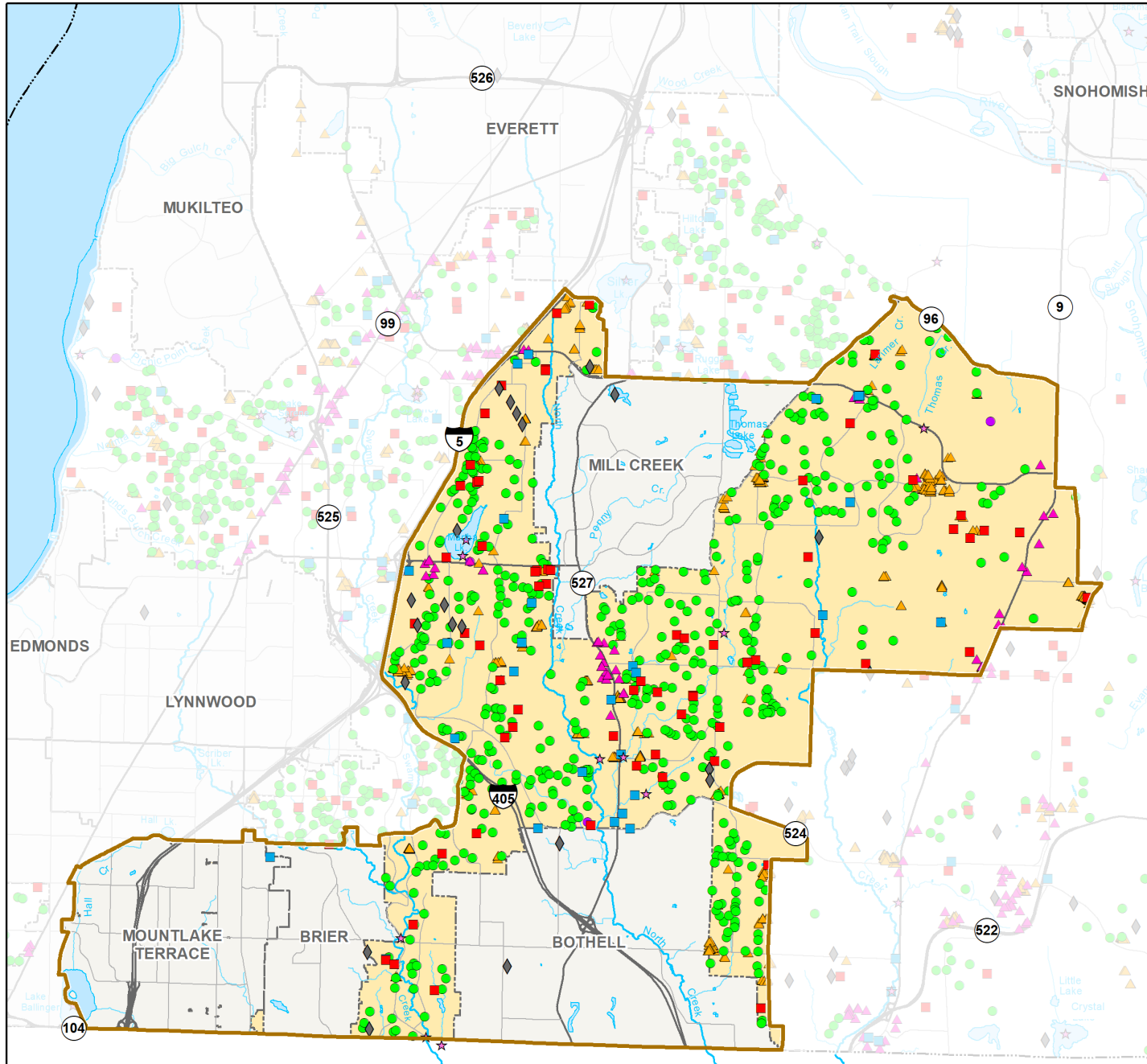


Countywide Service Provided within Council District 4 in 2021

- NPDES Water Quality Facilities Inspected (534)
- Non-NPDES Water Quality Facilities Inspected (3)
- Drainage Complaints (65)
- Water Quality Complaints (30)
- ★ Water Quality Monitoring Locations (10)
- ▲ Drainage Inventory Collected (688)
- ▲ Businesses Inspected (46)
- ◆ Savvy Septic Grants and Loans (0)
- ◆ Septic Inspection Rebates (22)
- County Council District 4
- Unincorporated County

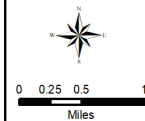


All maps, data, and information set forth herein ("Data"), are for illustrative purposes only and are not to be considered an official citation to, or representation of, the Snohomish County Code. Amendments and updates to the Data, together with other applicable County Code provisions, may apply which are not depicted herein. Snohomish County makes no representation or warranty concerning the content, accuracy, currency, completeness or quality of the Data contained herein and expressly disclaims any warranty of merchantability or fitness for any particular purpose. All persons accessing or otherwise using this Data assume all responsibility for use thereof and agree to hold Snohomish County harmless from and against any damages, loss, claim or liability arising out of any error, defect or omission contained within said Data. Washington State Law, Ch. 42.56 RCW, prohibits state and local agencies from providing access to lists of individuals intended for use for commercial purposes and, thus, no commercial use may be made of any Data comprising lists of individuals contained herein.

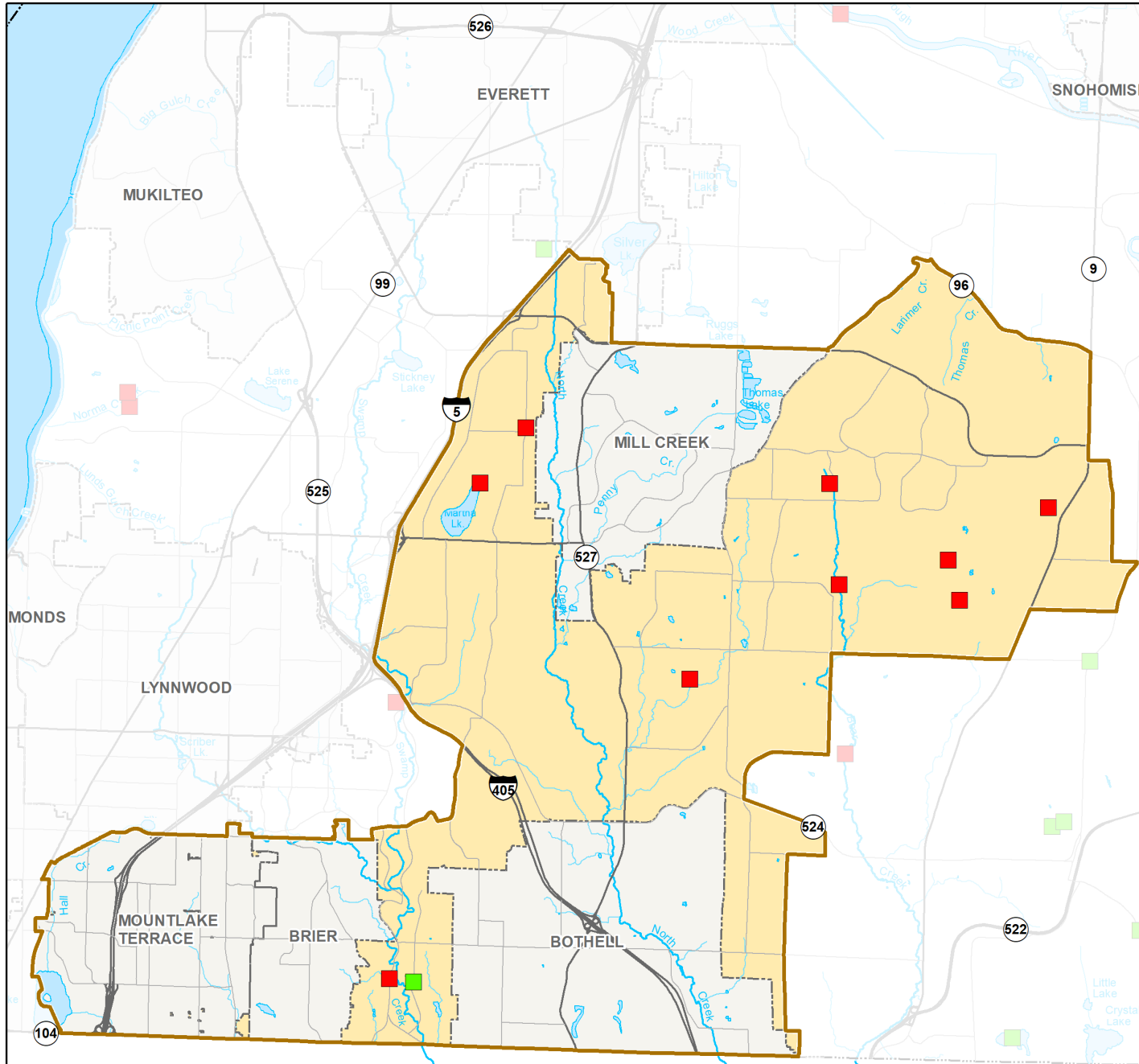


SWM Capital Projects in 2021 Council District 4

- In Design (9)
- Constructed or Implemented (1)
- County Council District 4
- Unincorporated County

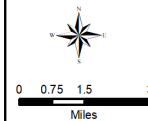


All maps, data, and information set forth herein ("Data"), are for illustrative purposes only and are not to be considered an official citation to, or representation of, the Snohomish County Code. Amendments and updates to the Data, together with other applicable County Code provisions, may apply which are not depicted herein. Snohomish County makes no representation or warranty concerning the content, accuracy, currency, completeness or quality of the Data contained herein and expressly disclaims any warranty of merchantability or fitness for any particular purpose. All persons accessing or otherwise using this Data assume all responsibility for use thereof and agree to hold Snohomish County harmless from and against any damages, loss, claim or liability arising out of any error, defect or omission contained within said Data. Washington State Law, Ch. 42.56 RCW, prohibits state and local agencies from providing access to lists of individuals intended for use for commercial purposes and, thus, no commercial use may be made of any Data comprising lists of individuals contained herein.

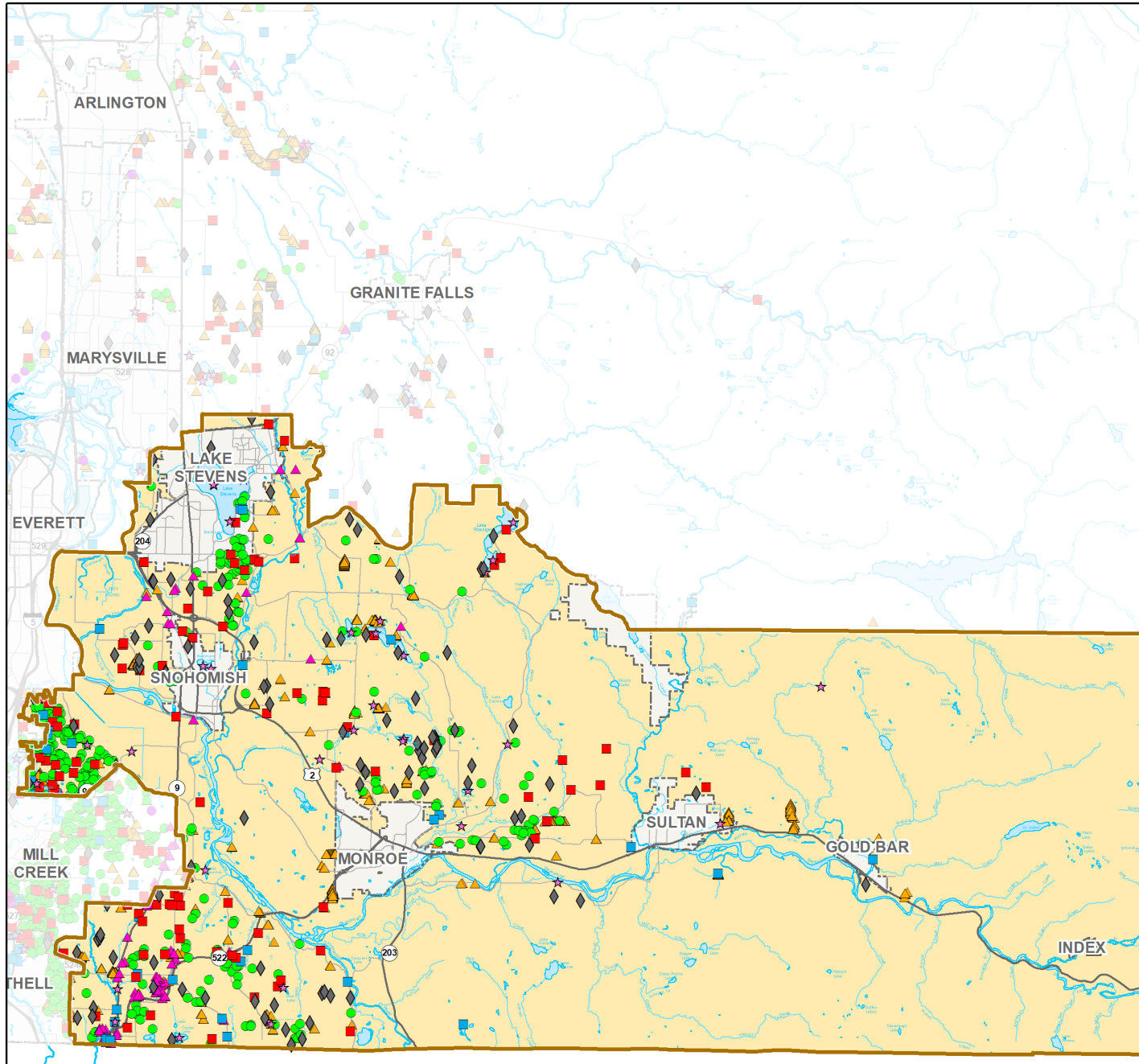


Countywide Service Provided within Council District 5 in 2021

- NPDES Water Quality Facilities Inspected (327)
- Non-NPDES Water Quality Facilities Inspected (0)
- Drainage Complaints (94)
- Water Quality Complaints (32)
- ★ Water Quality Monitoring Locations (35)
- ▲ Drainage Inventory Collected (1,391)
- ▲ Businesses Inspected (81)
- ◆ Savvy Septic Grants and Loans (0)
- ◆ Septic Inspection Rebates (101)
- County Council District 5
- Unincorporated County



All maps, data, and information set forth herein ("Data"), are for illustrative purposes only and are not to be considered an official citation to, or representation of, the Snohomish County Code. Amendments and updates to the Data, together with other applicable County Code provisions, may apply which are not depicted herein. Snohomish County makes no representation or warranty concerning the content, accuracy, currency, completeness or quality of the Data contained herein and expressly disclaims any warranty of merchantability or fitness for any particular purpose. All persons accessing or otherwise using this Data assume all responsibility for use thereof and agree to hold Snohomish County harmless from and against any damages, loss, claim or liability arising out of any error, defect or omission contained within said Data. Washington State Law, Ch. 42.56 RCW, prohibits state and local agencies from providing access to lists of individuals intended for use for commercial purposes and, thus, no commercial use may be made of any Data comprising lists of individuals contained herein.



SWM Capital Projects in 2021 Council District 5

- In Design (16)
- Constructed or Implemented (10)
- County Council District 5
- Unincorporated County



All maps, data, and information set forth herein ("Data"), are for illustrative purposes only and are not to be considered an official citation to, or representation of, the Snohomish County Code. Amendments and updates to the Data, together with other applicable County Code provisions, may apply which are not depicted herein. Snohomish County makes no representation or warranty concerning the content, accuracy, currency, completeness or quality of the Data contained herein and expressly disclaims any warranty of merchantability or fitness for any particular purpose. All persons accessing or otherwise using this Data assume all responsibility for use thereof and agree to hold Snohomish County harmless from and against any damages, loss, claim or liability arising out of any error, defect or omission contained within said Data. Washington State Law, Ch. 42.56 RCW, prohibits state and local agencies from providing access to lists of individuals intended for use for commercial purposes and, thus, no commercial use may be made of any Data comprising lists of individuals contained herein.

