



1st floor:  
10,671 sf

NO.	DESCRIPTION	DATE



**kmd** architects inc  
 1325 fourth avenue  
 suite 1702  
 seattle, wa 98101  
 t 206.467.1004  
 f 206.708.6777  
 kmdarchitects.com

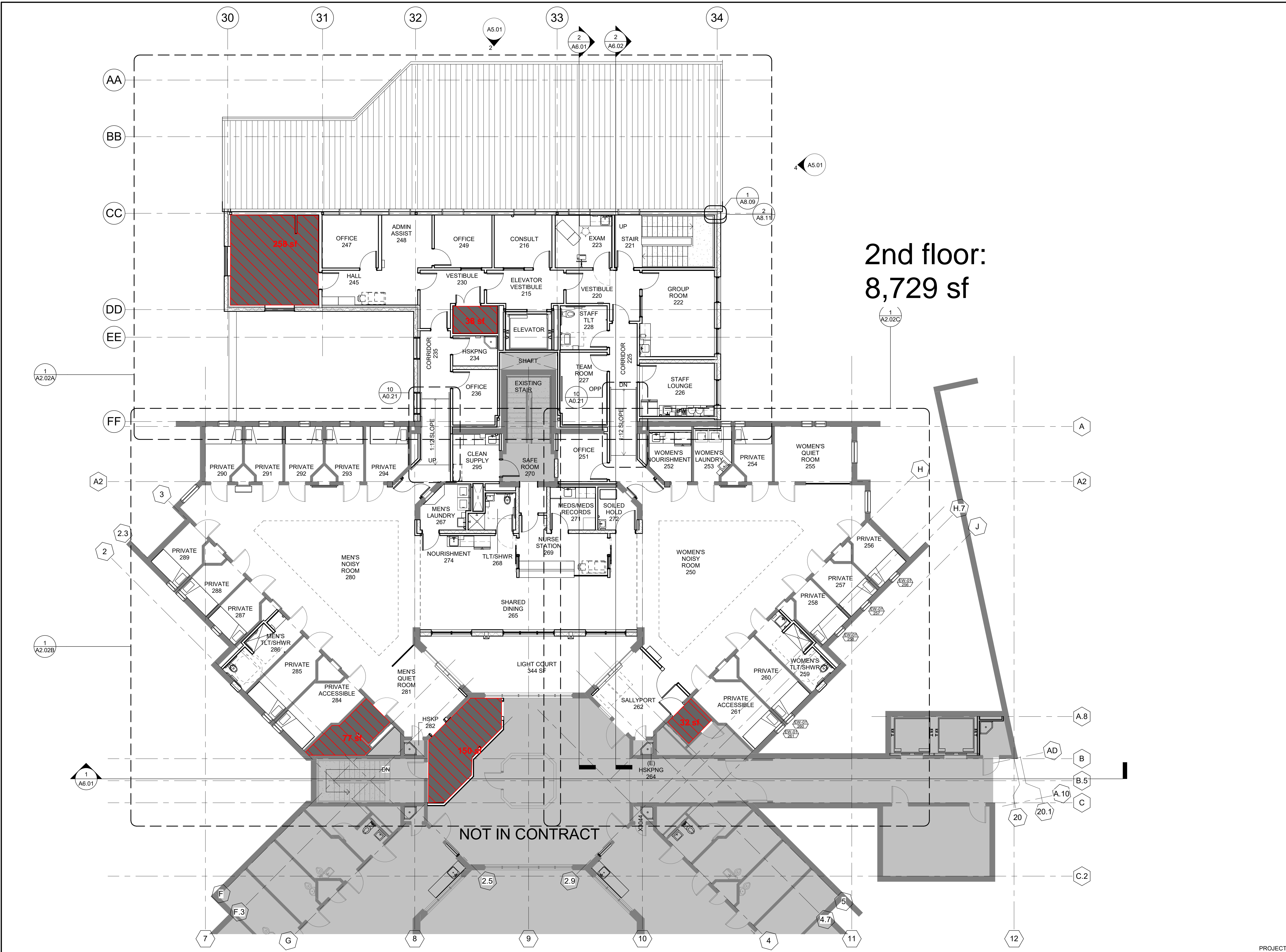
**SNOHOMISH COUNTY  
 FACILITIES MANAGEMENT**

**NORTH SOUND  
 BEHAVIORAL HEALTH  
 TREATMENT CENTER**  
 2801 10TH ST, EVERETT, WA 98201-1414

PROJECT NO.	468-204
DRAWN BY	CHKD. BY
DATE	07/31/2020
SCALE	1/8" = 1'-0"
TITLE	LEVEL 1 - OVERALL PLAN
NUMBER	A2.01

**1 LEVEL 1 - OVERALL PLAN**  
 SCALE 1/8" = 1'-0"





2nd floor:  
8,729 sf

NOT IN CONTRACT

1 LEVEL 2 - OVERALL PLAN  
SCALE 1/8" = 1'-0"

NO.	DESCRIPTION	DATE
2	CITY COMMENTS #1	04/15/2020
5	DOH	7/7/2020



**kmd** architects inc  
1325 fourth avenue  
suite 1702  
seattle, wa 98101  
t 206.467.1004  
f 206.708.6777  
kmdarchitects.com

**SNOHOMISH COUNTY  
FACILITIES MANAGEMENT**

**NORTH SOUND  
BEHAVIORAL HEALTH  
TREATMENT CENTER**  
2801 10TH ST, EVERETT, WA 98201-1414

PROJECT NO.	468-204
DRAWN BY	CHKD. BY
DATE	07/31/2020
SCALE	1/8" = 1'-0"
TITLE	LEVEL 2 - OVERALL PLAN
NUMBER	A2.02

