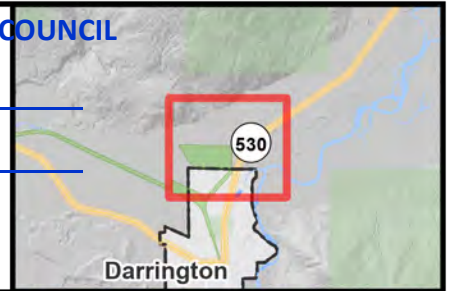


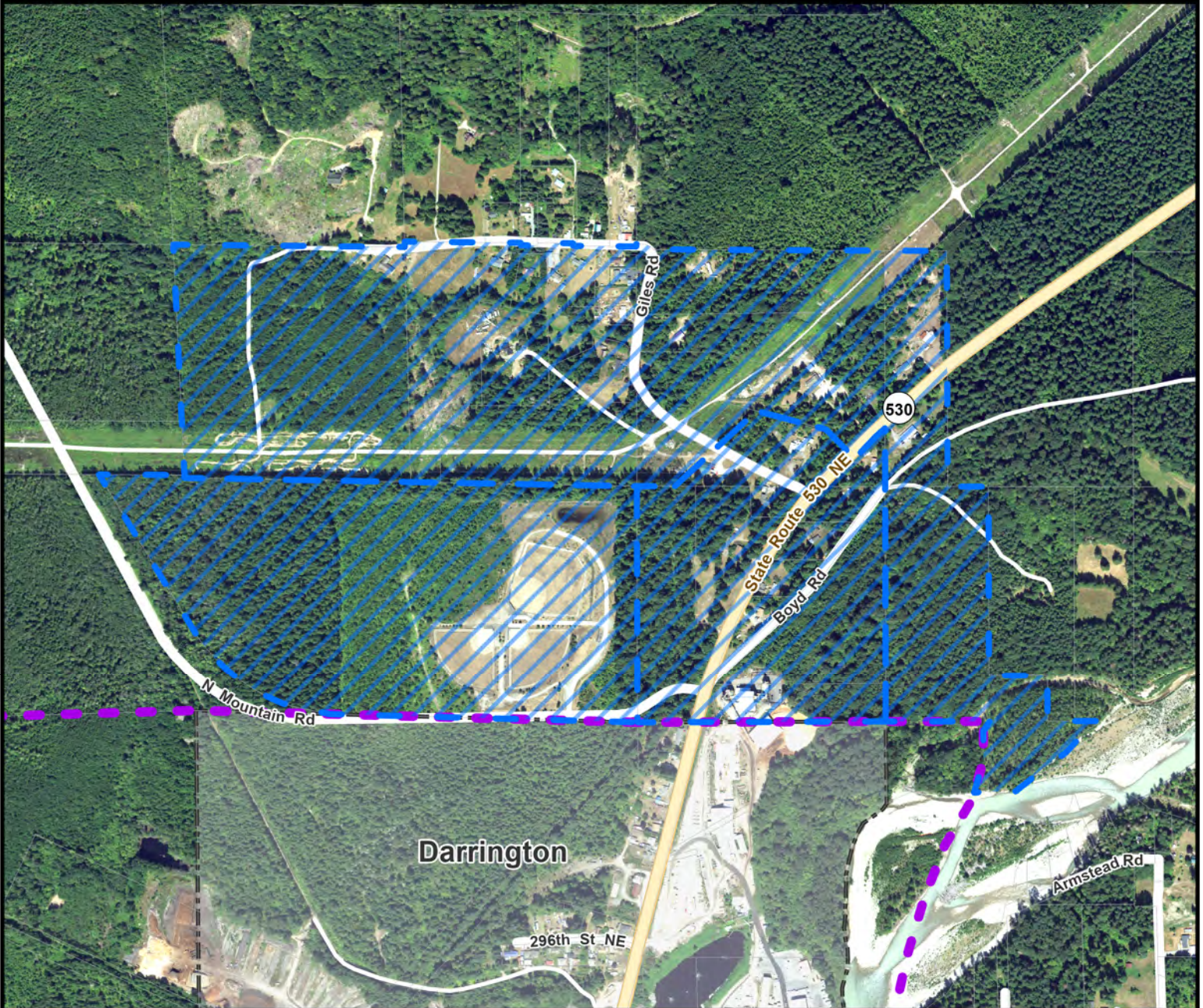








Docket XXI - Initial Review  
Town of Darrington - (DR1)  
UGA Addition Area 1

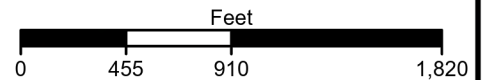
EXHIBIT # 3.1.6D.1  
FILE MOT 21-147



Proposed Future Land Use Redesignation and Rezone  
Comprehensive Plan Amendment



-  Proposed FLU Redesignation and Rezone
-  Urban Growth Area Boundary
-  City Boundary
-  Parcels
-  Major Roads
-  Streets
- 2019 Aerial Imagery



SNOHOMISH COUNTY DATA and MAP DISCLAIMER

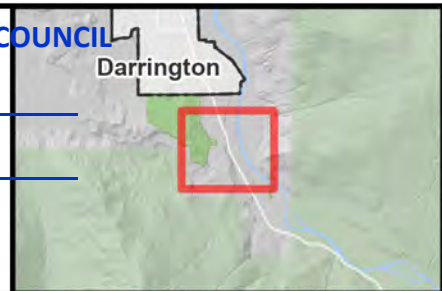
All maps, data, and information set forth herein ("Data"), are for illustrative purposes only and are not to be considered an official citation to, or representation of, the Snohomish County Code. Amendments and updates to the Data, together with other applicable County Code provisions, may apply which are not depicted herein. Snohomish County makes no representation or warranty concerning the content, accuracy, currency, completeness or quality of the Data contained herein and expressly disclaims any warranty of merchantability or fitness for any particular purpose. All persons accessing or otherwise using this Data assume all responsibility for use thereof and agree to hold Snohomish County harmless from and against any damages, loss, claim or liability arising out of any error, defect or omission contained within said Data. Washington State Law, Ch. 42.56 RCW, prohibits state and local agencies from providing access to lists of individuals intended for use for commercial purposes and, thus, no commercial use may be made of any Data comprising lists of individuals contained herein.

Docket XXI - Initial Review  
Town of Darrington - (DR1)  
UGA Addition Area 2

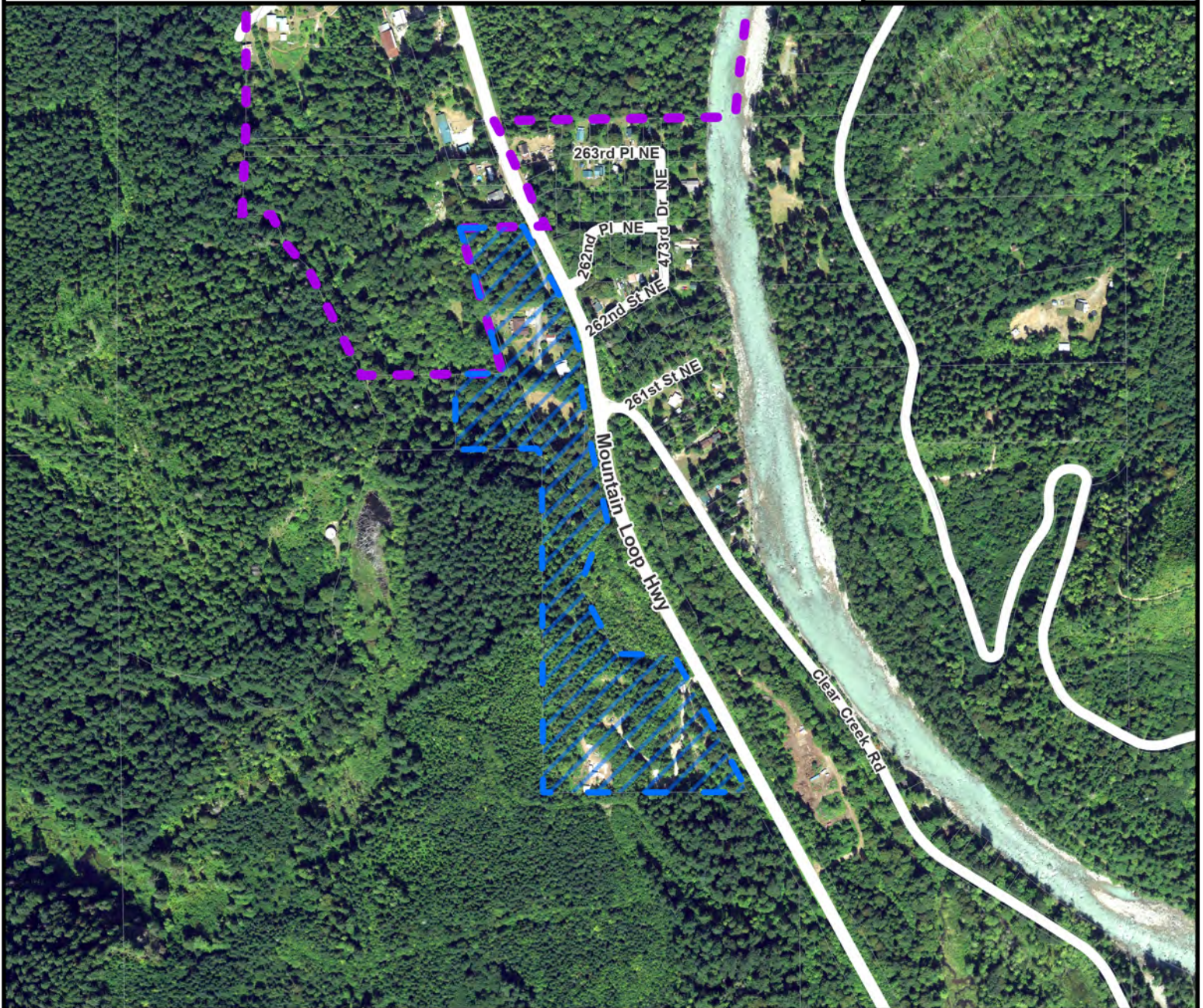
EXHIBIT # 3.1.6D.2

FILE MOT 21-147

Darrington



Proposed Future Land Use Redesignation and Rezone  
Comprehensive Plan Amendment




 Proposed FLU Redesignation and Rezone

 Urban Growth Area Boundary

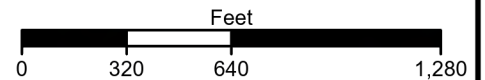
 City Boundary

 Parcels

 Major Roads

 Streets

2019 Aerial Imagery

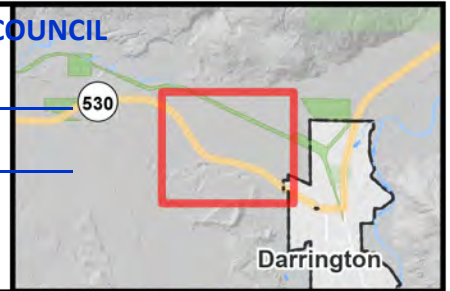


SNOHOMISH COUNTY DATA and MAP DISCLAIMER

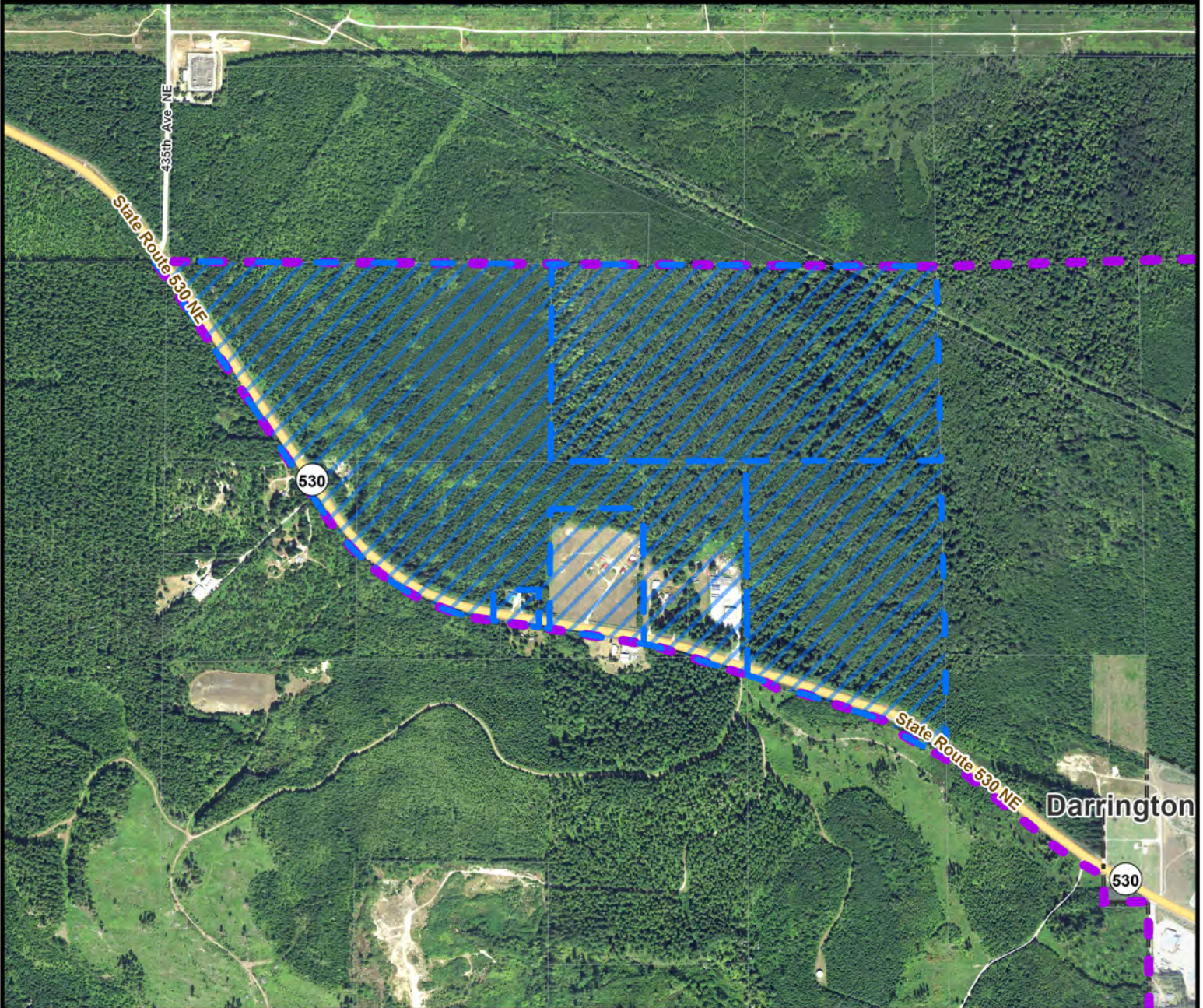
All maps, data, and information set forth herein ("Data"), are for illustrative purposes only and are not to be considered an official citation to, or representation of, the Snohomish County Code. Amendments and updates to the Data, together with other applicable County Code provisions, may apply which are not depicted herein. Snohomish County makes no representation or warranty concerning the content, accuracy, currency, completeness or quality of the Data contained herein and expressly disclaims any warranty of merchantability or fitness for any particular purpose. All persons accessing or otherwise using this Data assume all responsibility for use thereof and agree to hold Snohomish County harmless from and against any damages, loss, claim or liability arising out of any error, defect or omission contained within said Data. Washington State Law, Ch. 42.56 RCW, prohibits state and local agencies from providing access to lists of individuals intended for use for commercial purposes and, thus, no commercial use may be made of any Data comprising lists of individuals contained herein.







Docket XXI - Initial Review  
Town of Darrington - (DR1)  
UGA Removal Area 1

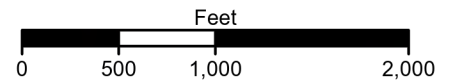
EXHIBIT # 3.1.6D.3  
FILE MOT 21-147



Proposed Future Land Use Redesignation and Rezone  
Comprehensive Plan Amendment



-  Proposed FLU Redesignation and Rezone
  -  Urban Growth Area Boundary
  -  City Boundary
  -  Parcels
  -  Major Roads
  -  Streets
- 2019 Aerial Imagery



SNOHOMISH COUNTY DATA and MAP DISCLAIMER

All maps, data, and information set forth herein ("Data"), are for illustrative purposes only and are not to be considered an official citation to, or representation of, the Snohomish County Code. Amendments and updates to the Data, together with other applicable County Code provisions, may apply which are not depicted herein. Snohomish County makes no representation or warranty concerning the content, accuracy, currency, completeness or quality of the Data contained herein and expressly disclaims any warranty of merchantability or fitness for any particular purpose. All persons accessing or otherwise using this Data assume all responsibility for use thereof and agree to hold Snohomish County harmless from and against any damages, loss, claim or liability arising out of any error, defect or omission contained within said Data. Washington State Law, Ch. 42.56 RCW, prohibits state and local agencies from providing access to lists of individuals intended for use for commercial purposes and, thus, no commercial use may be made of any Data comprising lists of individuals contained herein.

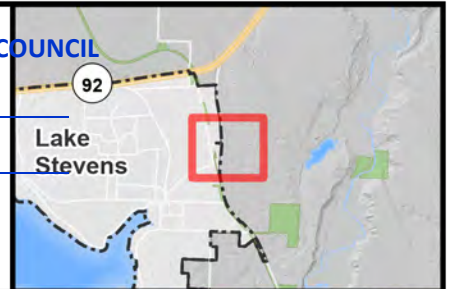


Docket XXI - Initial Review  
 City of Lake Stevens - (LS2)  
 Urban Growth Area (UGA) Expansion

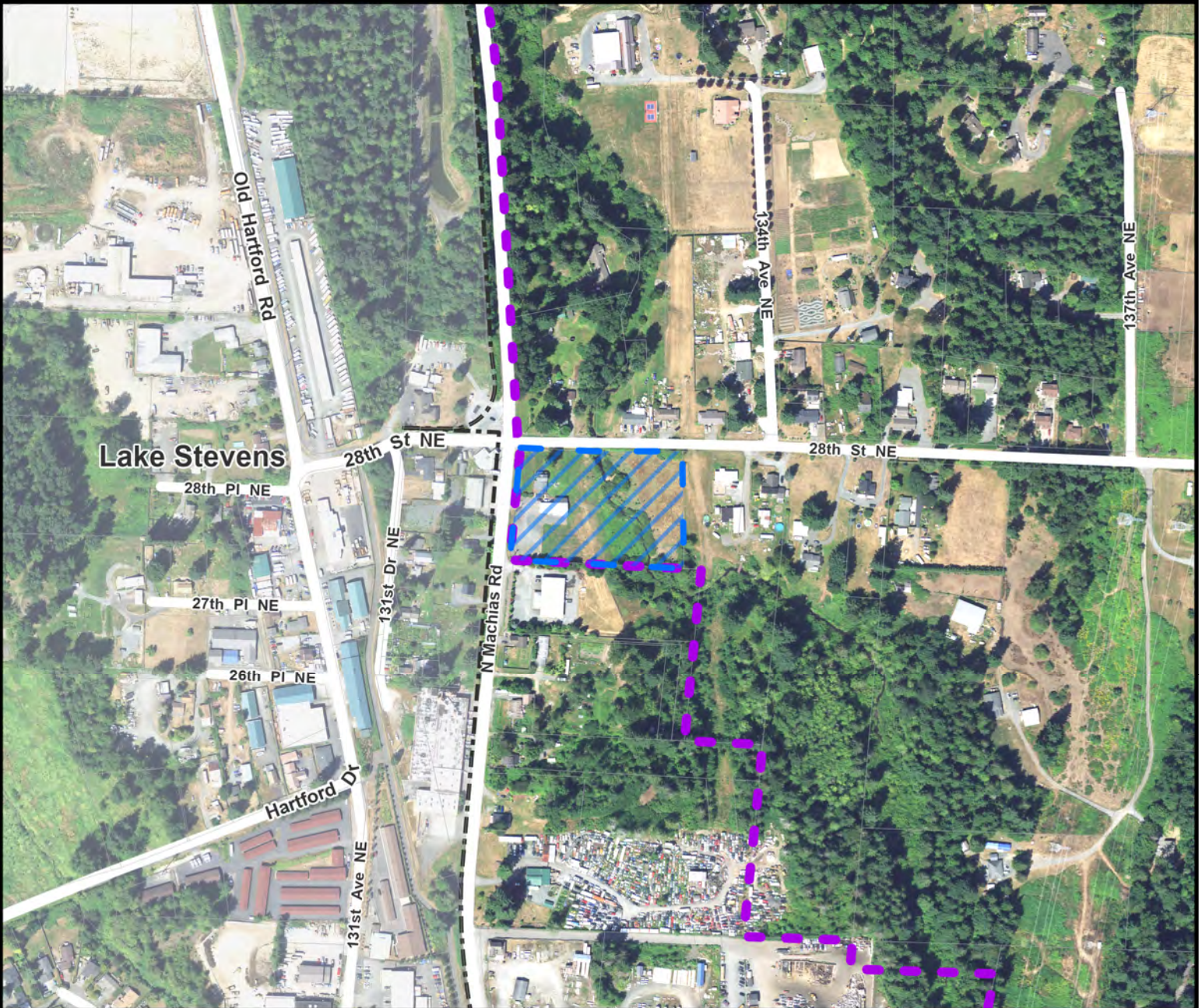
SNOHOMISH COUNTY COUNCIL

EXHIBIT # 3.1.8D

FILE MOT 21-147



Proposed Future Land Use Redesignation and Rezone  
 Comprehensive Plan Amendment



Proposed FLU Redesignation and Rezone

Urban Growth Area Boundary

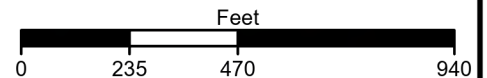
City Boundary

Parcels

Major Roads

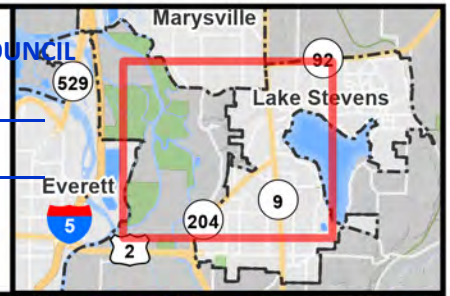
Streets

2019 Aerial Imagery

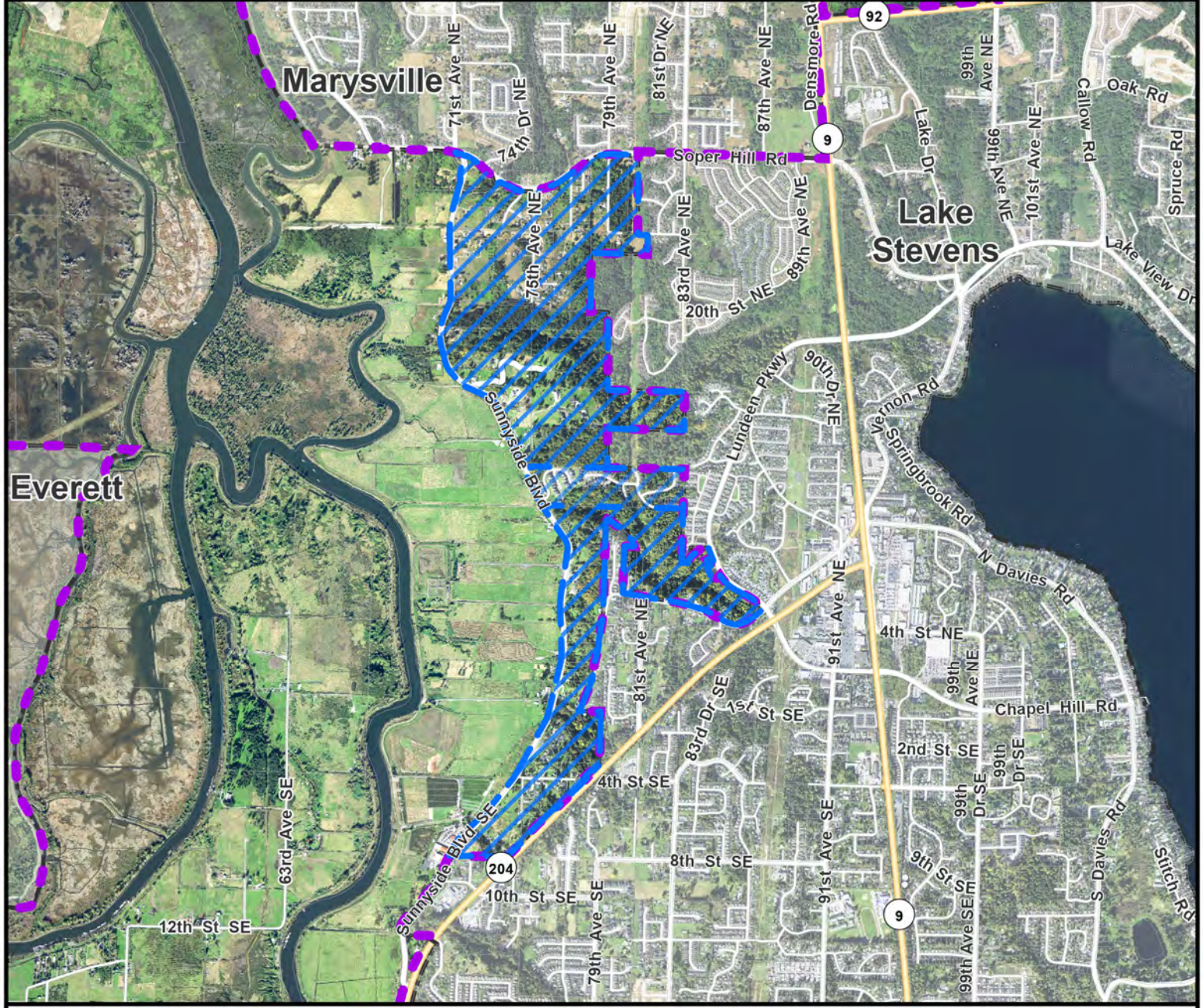


SNOHOMISH COUNTY DATA and MAP DISCLAIMER

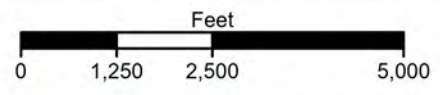
All maps, data, and information set forth herein ("Data"), are for illustrative purposes only and are not to be considered an official citation to, or representation of, the Snohomish County Code. Amendments and updates to the Data, together with other applicable County Code provisions, may apply which are not depicted herein. Snohomish County makes no representation or warranty concerning the content, accuracy, currency, completeness or quality of the Data contained herein and expressly disclaims any warranty of merchantability or fitness for any particular purpose. All persons accessing or otherwise using this Data assume all responsibility for use thereof and agree to hold Snohomish County harmless from and against any damages, loss, claim or liability arising out of any error, defect or omission contained within said Data. Washington State Law, Ch. 42.56 RCW, prohibits state and local agencies from providing access to lists of individuals intended for use for commercial purposes and, thus, no commercial use may be made of any Data comprising lists of individuals contained herein.



Proposed Future Land Use Redesignation and Rezone  
 Comprehensive Plan Amendment



- Proposed FLU Redesignation and Rezone
  - Urban Growth Area Boundary
  - City Boundary
  - Parcels
  - Major Roads
  - Streets
- 2019 Aerial Imagery

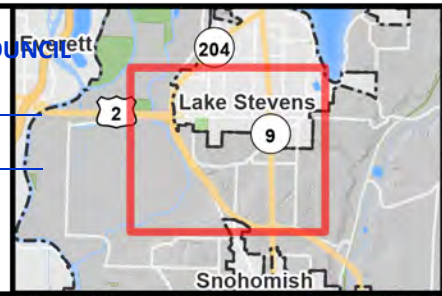


**SNOHOMISH COUNTY DATA and MAP DISCLAIMER**

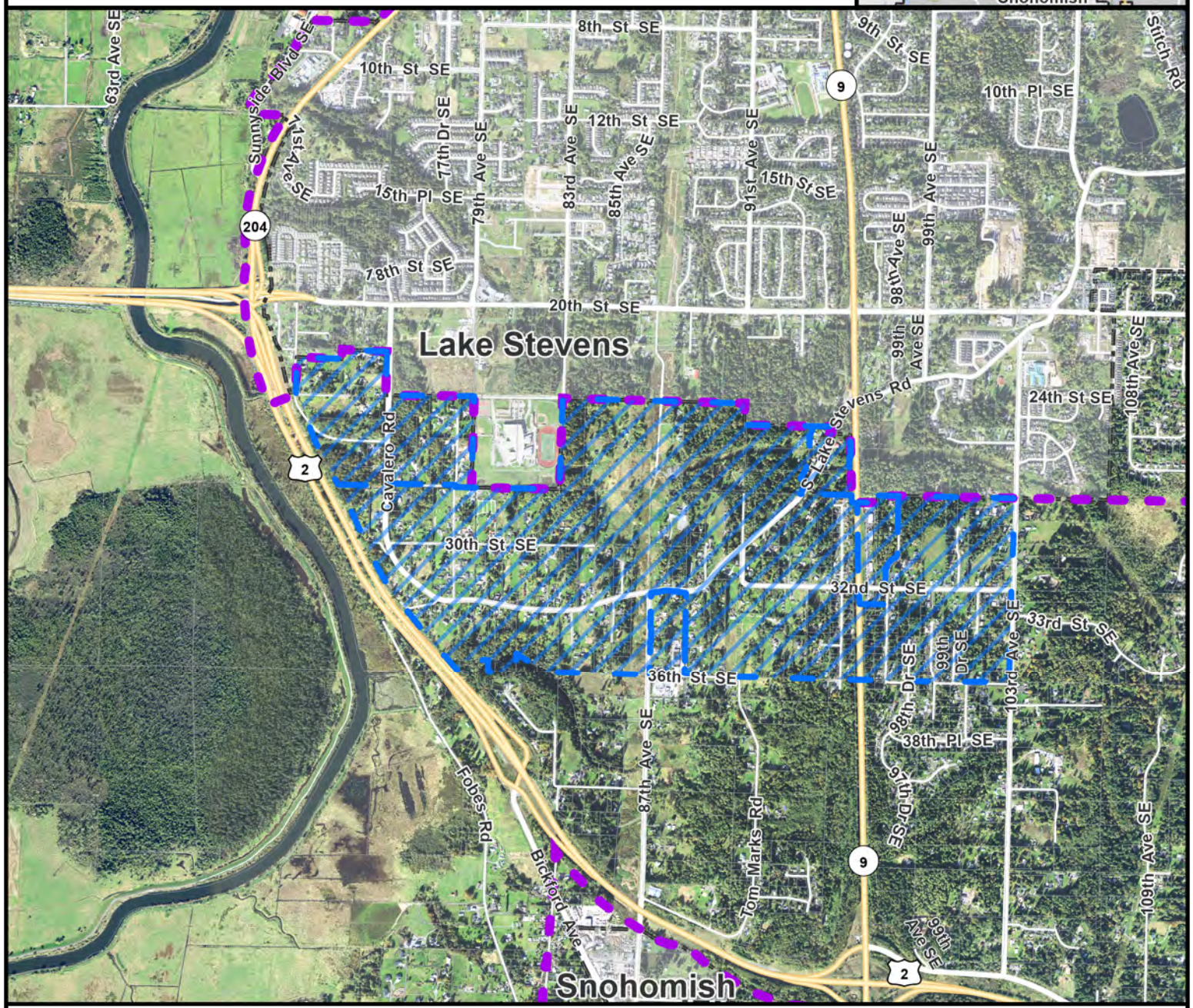
All maps, data, and information set forth herein ("Data"), are for illustrative purposes only and are not to be considered an official citation to, or representation of, the Snohomish County Code. Amendments and updates to the Data, together with other applicable County Code provisions, may apply which are not depicted herein. Snohomish County makes no representation or warranty concerning the content, accuracy, currency, completeness or quality of the Data contained herein and expressly disclaims any warranty of merchantability or fitness for any particular purpose. All persons accessing or otherwise using this Data assume all responsibility for use thereof and agree to hold Snohomish County harmless from and against any damages, loss, claim or liability arising out of any error, defect or omission contained within said Data. Washington State Law, Ch. 42.56 RCW, prohibits state and local agencies from providing access to lists of individuals intended for use for commercial purposes and, thus, no commercial use may be made of any Data comprising lists of individuals contained herein.







Docket XXI - Initial Review  
 City of Lake Stevens - (LS4)  
 Urban Growth Area (UGA) Expansion FILE MOT 21-147

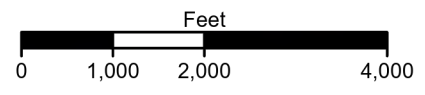
SNOHOMISH COUNTY COUNCIL  
 EXHIBIT # 3.1.10D  
 FILE MOT 21-147



Proposed Future Land Use Redesignation and Rezone  
 Comprehensive Plan Amendment



-  Proposed FLU Redesignation and Rezone
-  Urban Growth Area Boundary
-  City Boundary
-  Parcels
-  Major Roads
-  Streets
- 2019 Aerial Imagery



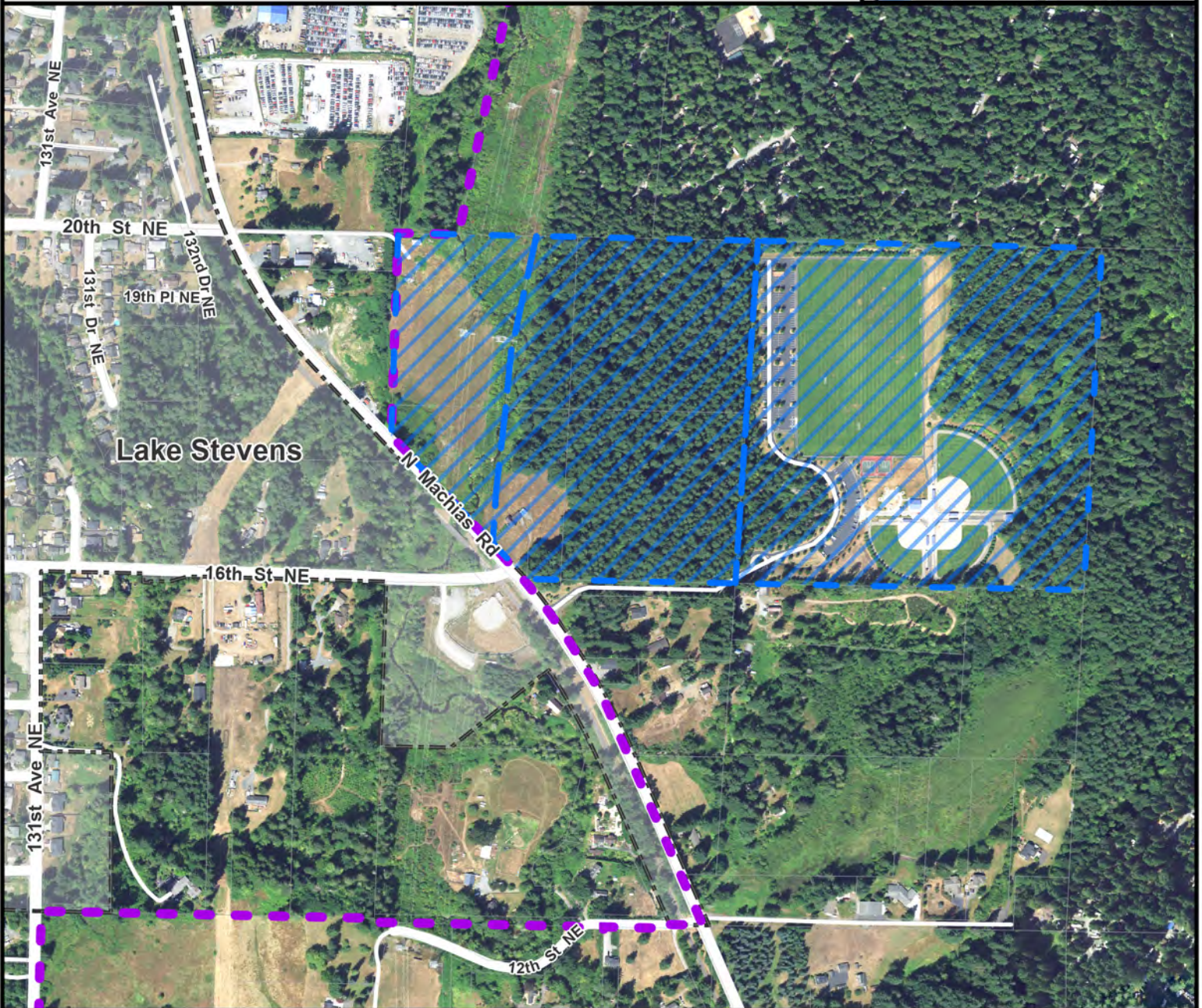
**SNOHOMISH COUNTY DATA and MAP DISCLAIMER**

All maps, data, and information set forth herein ("Data"), are for illustrative purposes only and are not to be considered an official citation to, or representation of, the Snohomish County Code. Amendments and updates to the Data, together with other applicable County Code provisions, may apply which are not depicted herein. Snohomish County makes no representation or warranty concerning the content, accuracy, currency, completeness or quality of the Data contained herein and expressly disclaims any warranty of merchantability or fitness for any particular purpose. All persons accessing or otherwise using this Data assume all responsibility for use thereof and agree to hold Snohomish County harmless from and against any damages, loss, claim or liability arising out of any error, defect or omission contained within said Data. Washington State Law, Ch. 42.56 RCW, prohibits state and local agencies from providing access to lists of individuals intended for use for commercial purposes and, thus, no commercial use may be made of any Data comprising lists of individuals contained herein.





Proposed Future Land Use Redesignation and Rezone  
Comprehensive Plan Amendment



Proposed FLU Redesignation and Rezone

Urban Growth Area Boundary

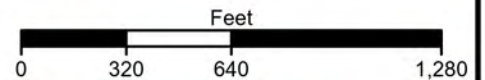
City Boundary

Parcels

Major Roads

Streets

2019 Aerial Imagery



SNOHOMISH COUNTY DATA and MAP DISCLAIMER

All maps, data, and information set forth herein ("Data"), are for illustrative purposes only and are not to be considered an official citation to, or representation of, the Snohomish County Code. Amendments and updates to the Data, together with other applicable County Code provisions, may apply which are not depicted herein. Snohomish County makes no representation or warranty concerning the content, accuracy, currency, completeness or quality of the Data contained herein and expressly disclaims any warranty of merchantability or fitness for any particular purpose. All persons accessing or otherwise using this Data assume all responsibility for use thereof and agree to hold Snohomish County harmless from and against any damages, loss, claim or liability arising out of any error, defect or omission contained within said Data. Washington State Law, Ch. 42.56 RCW, prohibits state and local agencies from providing access to lists of individuals intended for use for commercial purposes and, thus, no commercial use may be made of any Data comprising lists of individuals contained herein.



Docket XXI - Initial Review  
**Vangemert - (MALT1)**  
**Urban Growth Area (UGA) Expansion**

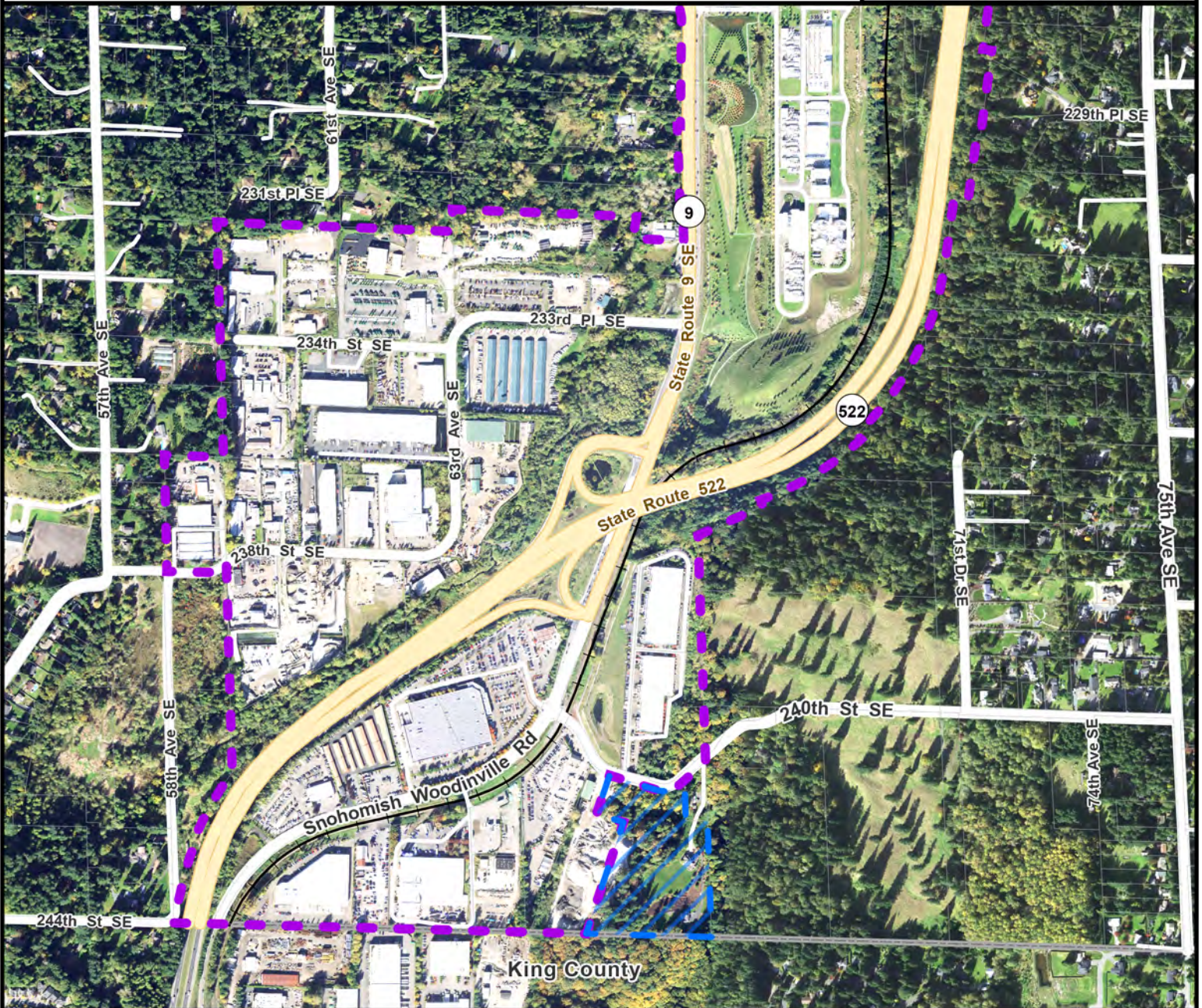
SNOHOMISH COUNTY COUNCIL







EXHIBIT # 3.1.13D

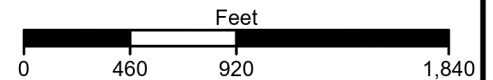
FILE MOT 21-147



Proposed Future Land Use Redesignation and Rezone  
 Comprehensive Plan Amendment



-  Proposed FLU Redesignation and Rezone
  -  Urban Growth Area Boundary
  -  City Boundary
  -  Parcels
  -  Major Roads
  -  Streets
- 2019 Aerial Imagery



SNOHOMISH COUNTY DATA and MAP DISCLAIMER

All maps, data, and information set forth herein ("Data"), are for illustrative purposes only and are not to be considered an official citation to, or representation of, the Snohomish County Code. Amendments and updates to the Data, together with other applicable County Code provisions, may apply which are not depicted herein. Snohomish County makes no representation or warranty concerning the content, accuracy, currency, completeness or quality of the Data contained herein and expressly disclaims any warranty of merchantability or fitness for any particular purpose. All persons accessing or otherwise using this Data assume all responsibility for use thereof and agree to hold Snohomish County harmless from and against any damages, loss, claim or liability arising out of any error, defect or omission contained within said Data. Washington State Law, Ch. 42.56 RCW, prohibits state and local agencies from providing access to lists of individuals intended for use for commercial purposes and, thus, no commercial use may be made of any Data comprising lists of individuals contained herein.

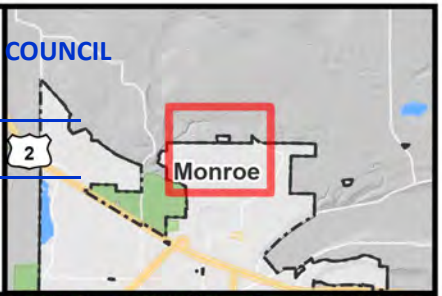


Docket XXI - Initial Review  
 Davis-Johnson - (MON2)  
 Urban Growth Area (UGA) Expansion

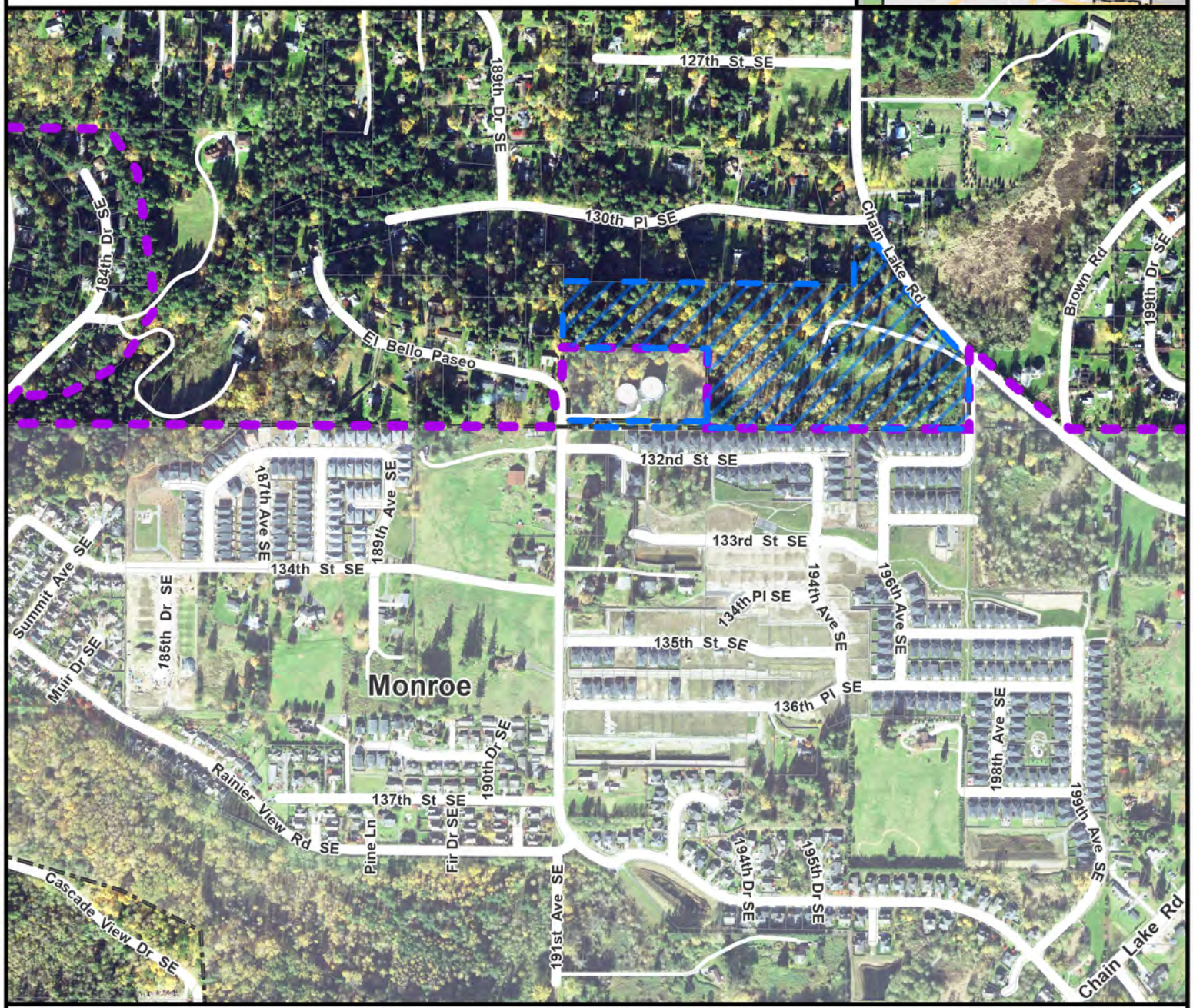
SNOHOMISH COUNTY COUNCIL




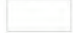


EXHIBIT # 3.1.15D

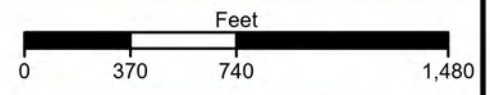
FILE MOT 21-147



Proposed Future Land Use Redesignation and Rezone  
 Comprehensive Plan Amendment



-  Proposed FLU Redesignation and Rezone
  -  Urban Growth Area Boundary
  -  City Boundary
  -  Parcels
  -  Major Roads
  -  Streets
- 2019 Aerial Imagery



**SNOHOMISH COUNTY DATA and MAP DISCLAIMER**

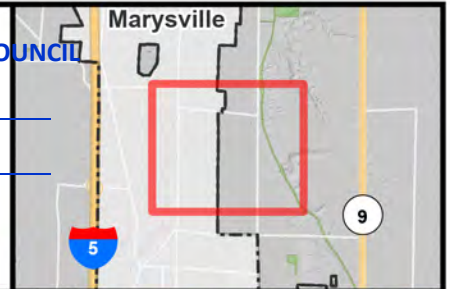
All maps, data, and information set forth herein ("Data"), are for illustrative purposes only and are not to be considered an official citation to, or representation of, the Snohomish County Code. Amendments and updates to the Data, together with other applicable County Code provisions, may apply which are not depicted herein. Snohomish County makes no representation or warranty concerning the content, accuracy, currency, completeness or quality of the Data contained herein and expressly disclaims any warranty of merchantability or fitness for any particular purpose. All persons accessing or otherwise using this Data assume all responsibility for use thereof and agree to hold Snohomish County harmless from and against any damages, loss, claim or liability arising out of any error, defect or omission contained within said Data. Washington State Law, Ch. 42.56 RCW, prohibits state and local agencies from providing access to lists of individuals intended for use for commercial purposes and, thus, no commercial use may be made of any Data comprising lists of individuals contained herein.

Docket XXI - Initial Review  
 Natural 9 Holdings - (MV1)  
 Urban Growth Area (UGA) Expansion

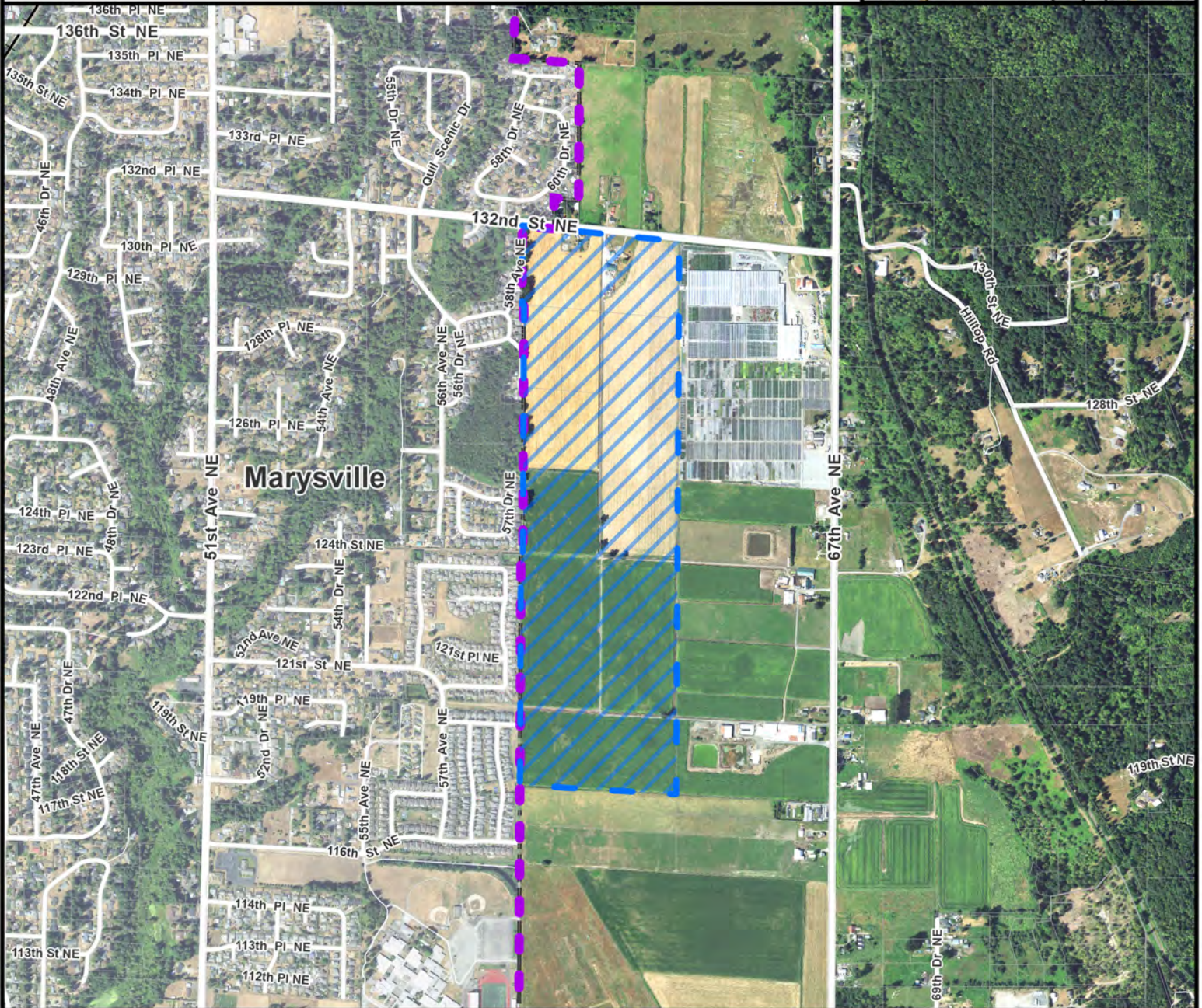
SNOHOMISH COUNTY COUNCIL




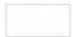


EXHIBIT # 3.1.16D

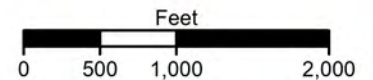
FILE MOT 21-147



Proposed Future Land Use Redesignation and Rezone  
 Comprehensive Plan Amendment



-  Proposed FLU Redesignation and Rezone
  -  Urban Growth Area Boundary
  -  City Boundary
  -  Parcels
  -  Major Roads
  -  Streets
- 2019 Aerial Imagery

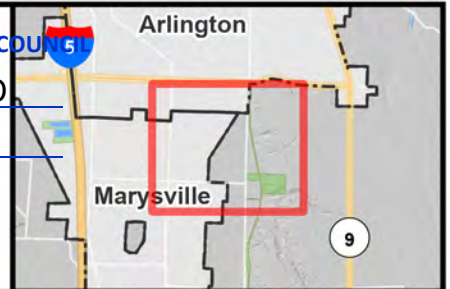


SNOHOMISH COUNTY DATA and MAP DISCLAIMER

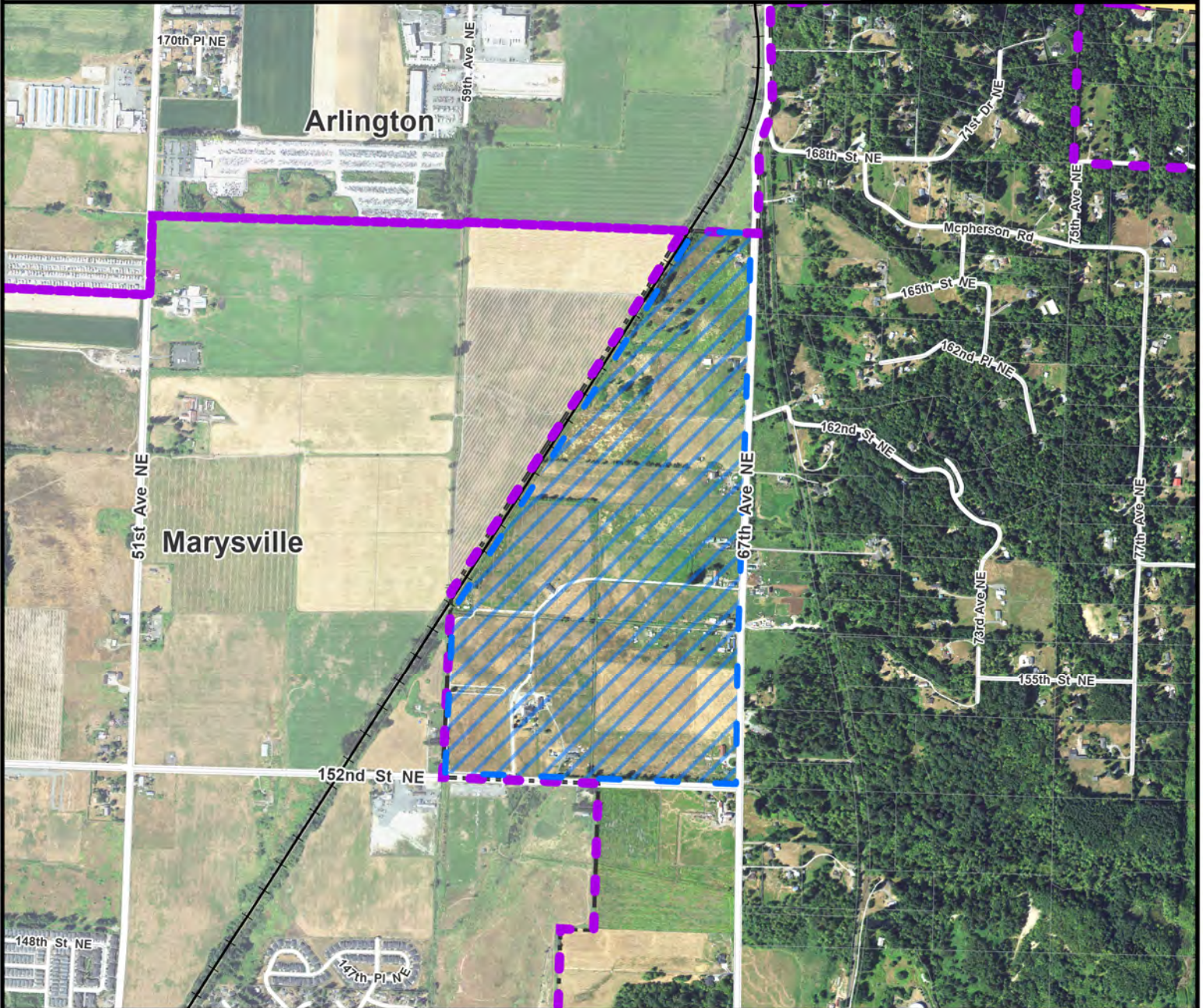
All maps, data, and information set forth herein ("Data"), are for illustrative purposes only and are not to be considered an official citation to, or representation of, the Snohomish County Code. Amendments and updates to the Data, together with other applicable County Code provisions, may apply which are not depicted herein. Snohomish County makes no representation or warranty concerning the content, accuracy, currency, completeness or quality of the Data contained herein and expressly disclaims any warranty of merchantability or fitness for any particular purpose. All persons accessing or otherwise using this Data assume all responsibility for use thereof and agree to hold Snohomish County harmless from and against any damages, loss, claim or liability arising out of any error, defect or omission contained within said Data. Washington State Law, Ch. 42.56 RCW, prohibits state and local agencies from providing access to lists of individuals intended for use for commercial purposes and, thus, no commercial use may be made of any Data comprising lists of individuals contained herein.




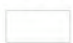


Docket XXI - Initial Review  
**NorthPoint Development - (MV2)**  
**Urban Growth Area (UGA) Expansion**

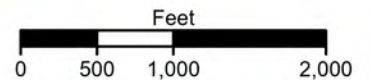
SNOHOMISH COUNTY COUNTY 5  
 EXHIBIT # 3.1.17D  
 FILE MOT 21-147



Proposed Future Land Use Redesignation and Rezone  
 Comprehensive Plan Amendment



-  Proposed FLU Redesignation and Rezone
  -  Urban Growth Area Boundary
  -  City Boundary
  -  Parcels
  -  Major Roads
  -  Streets
- 2019 Aerial Imagery



SNOHOMISH COUNTY DATA and MAP DISCLAIMER

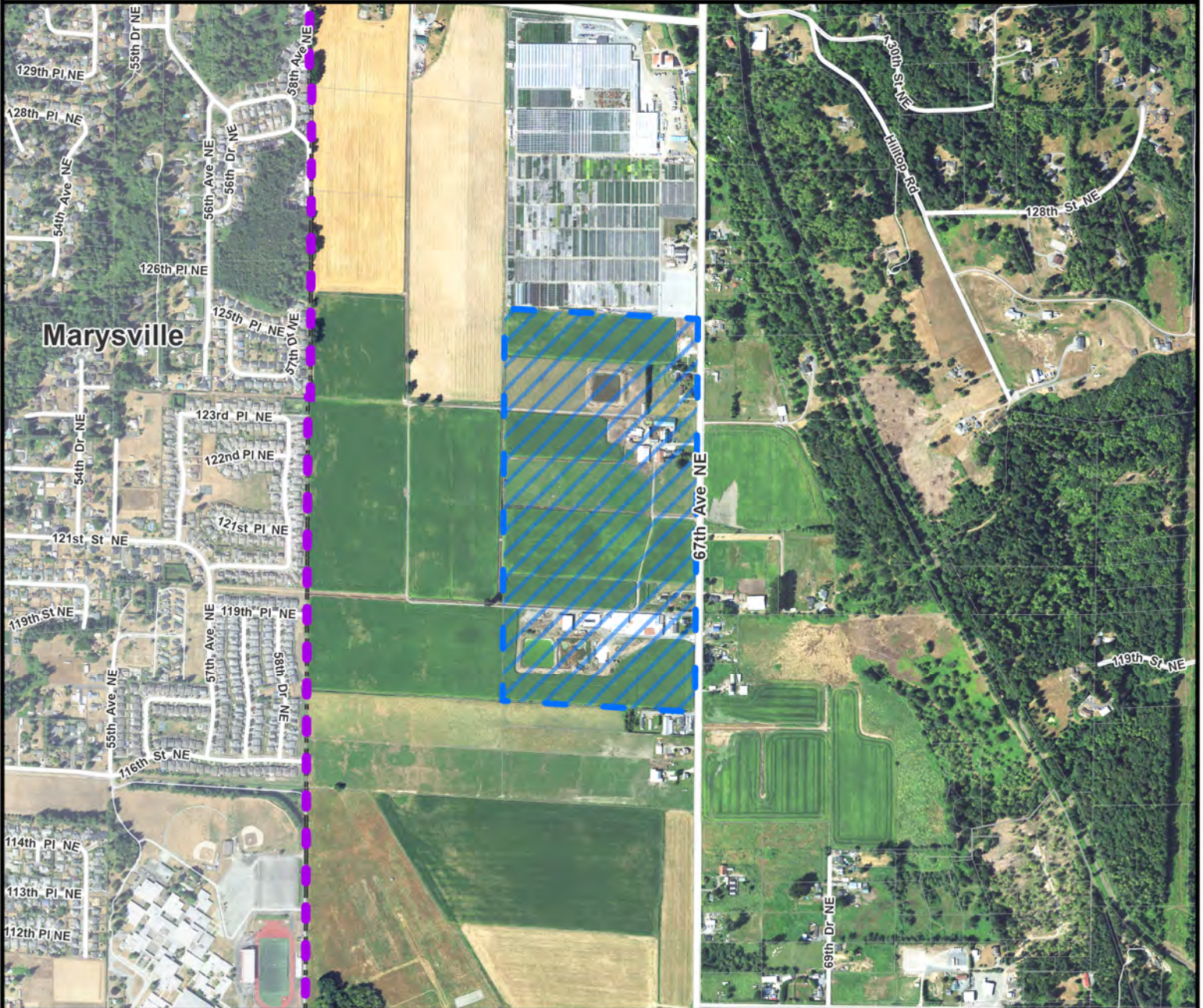
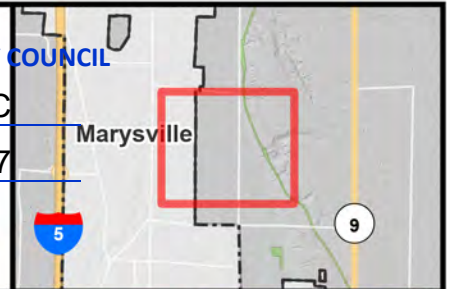
All maps, data, and information set forth herein ("Data"), are for illustrative purposes only and are not to be considered an official citation to, or representation of, the Snohomish County Code. Amendments and updates to the Data, together with other applicable County Code provisions, may apply which are not depicted herein. Snohomish County makes no representation or warranty concerning the content, accuracy, currency, completeness or quality of the Data contained herein and expressly disclaims any warranty of merchantability or fitness for any particular purpose. All persons accessing or otherwise using this Data assume all responsibility for use thereof and agree to hold Snohomish County harmless from and against any damages, loss, claim or liability arising out of any error, defect or omission contained within said Data. Washington State Law, Ch. 42.56 RCW, prohibits state and local agencies from providing access to lists of individuals intended for use for commercial purposes and, thus, no commercial use may be made of any Data comprising lists of individuals contained herein.

# Van Dam Farms WWA - (RURAL1)

EXHIBIT # 3.1.18C

FILE MOT 21-147

## Proposed Future Land Use Redesignation and Rezone Comprehensive Plan Amendment



Proposed FLU Redesignation and Rezone

Urban Growth Area Boundary

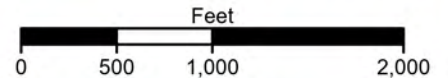
City Boundary

Parcels

Major Roads

Streets

2019 Aerial Imagery



### SNOHOMISH COUNTY DATA and MAP DISCLAIMER

All maps, data, and information set forth herein ("Data"), are for illustrative purposes only and are not to be considered an official citation to, or representation of, the Snohomish County Code. Amendments and updates to the Data, together with other applicable County Code provisions, may apply which are not depicted herein. Snohomish County makes no representation or warranty concerning the content, accuracy, currency, completeness or quality of the Data contained herein and expressly disclaims any warranty of merchantability or fitness for any particular purpose. All persons accessing or otherwise using this Data assume all responsibility for use thereof and agree to hold Snohomish County harmless from and against any damages, loss, claim or liability arising out of any error, defect or omission contained within said Data. Washington State Law, Ch. 42.56 RCW, prohibits state and local agencies from providing access to lists of individuals intended for use for commercial purposes and, thus, no commercial use may be made of any Data comprising lists of individuals contained herein.



Docket XXI - Initial Review  
 City of Stanwood - (STAN1)  
 Urban Growth Area (UGA) Expansion

SNOHOMISH COUNTY COUNCIL

EXHIBIT # 3.1.19D

MOT 21-147



Proposed Future Land Use Redesignation and Rezone  
 Proposed Comprehensive Plan Amendment



Proposed FLU Redesignation and Rezone

Urban Growth Area Boundary

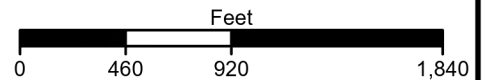
City Boundary

Parcels

Major Roads

Streets

2019 Aerial Imagery

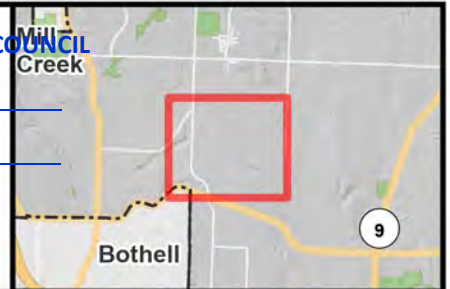


SNOHOMISH COUNTY DATA and MAP DISCLAIMER

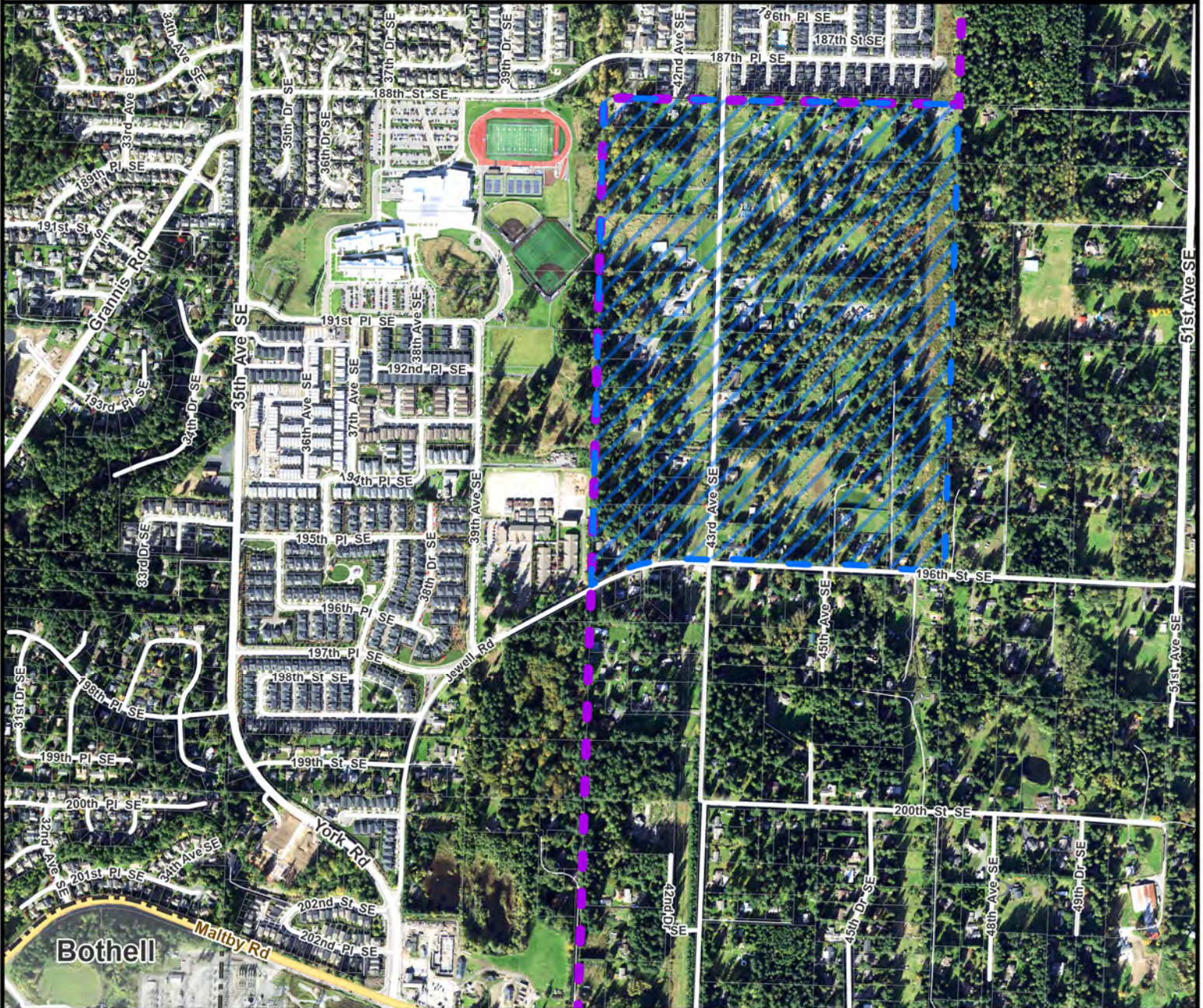
All maps, data, and information set forth herein ("Data"), are for illustrative purposes only and are not to be considered an official citation to, or representation of, the Snohomish County Code. Amendments and updates to the Data, together with other applicable County Code provisions, may apply which are not depicted herein. Snohomish County makes no representation or warranty concerning the content, accuracy, currency, completeness or quality of the Data contained herein and expressly disclaims any warranty of merchantability or fitness for any particular purpose. All persons accessing or otherwise using this Data assume all responsibility for use thereof and agree to hold Snohomish County harmless from and against any damages, loss, claim or liability arising out of any error, defect or omission contained within said Data. Washington State Law, Ch. 42.56 RCW, prohibits state and local agencies from providing access to lists of individuals intended for use for commercial purposes and, thus, no commercial use may be made of any Data comprising lists of individuals contained herein.

Docket XXI - Initial Review  
**Austin - (SW8)**  
**Urban Growth Area (UGA) Expansion**

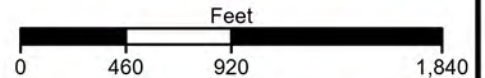
SNOHOMISH COUNTY COUNCIL  
 EXHIBIT # 3.1.20D  
 FILE MOT 21-147



Proposed Future Land Use Redesignation and Rezone  
 Comprehensive Plan Amendment



- Proposed FLU Redesignation and Rezone
- Urban Growth Area Boundary
- City Boundary
- Parcels
- Major Roads
- Streets
- 2019 Aerial Imagery



SNOHOMISH COUNTY DATA and MAP DISCLAIMER

All maps, data, and information set forth herein ("Data"), are for illustrative purposes only and are not to be considered an official citation to, or representation of, the Snohomish County Code. Amendments and updates to the Data, together with other applicable County Code provisions, may apply which are not depicted herein. Snohomish County makes no representation or warranty concerning the content, accuracy, currency, completeness or quality of the Data contained herein and expressly disclaims any warranty of merchantability or fitness for any particular purpose. All persons accessing or otherwise using this Data assume all responsibility for use thereof and agree to hold Snohomish County harmless from and against any damages, loss, claim or liability arising out of any error, defect or omission contained within said Data. Washington State Law, Ch. 42.56 RCW, prohibits state and local agencies from providing access to lists of individuals intended for use for commercial purposes and, thus, no commercial use may be made of any Data comprising lists of individuals contained herein.



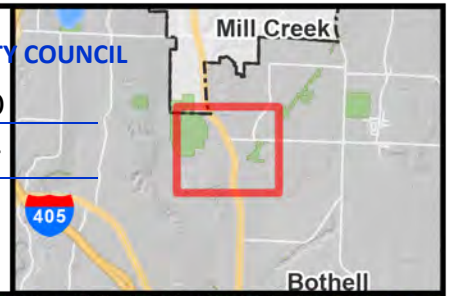
Docket XXI - Initial Review

SNOHOMISH COUNTY COUNCIL

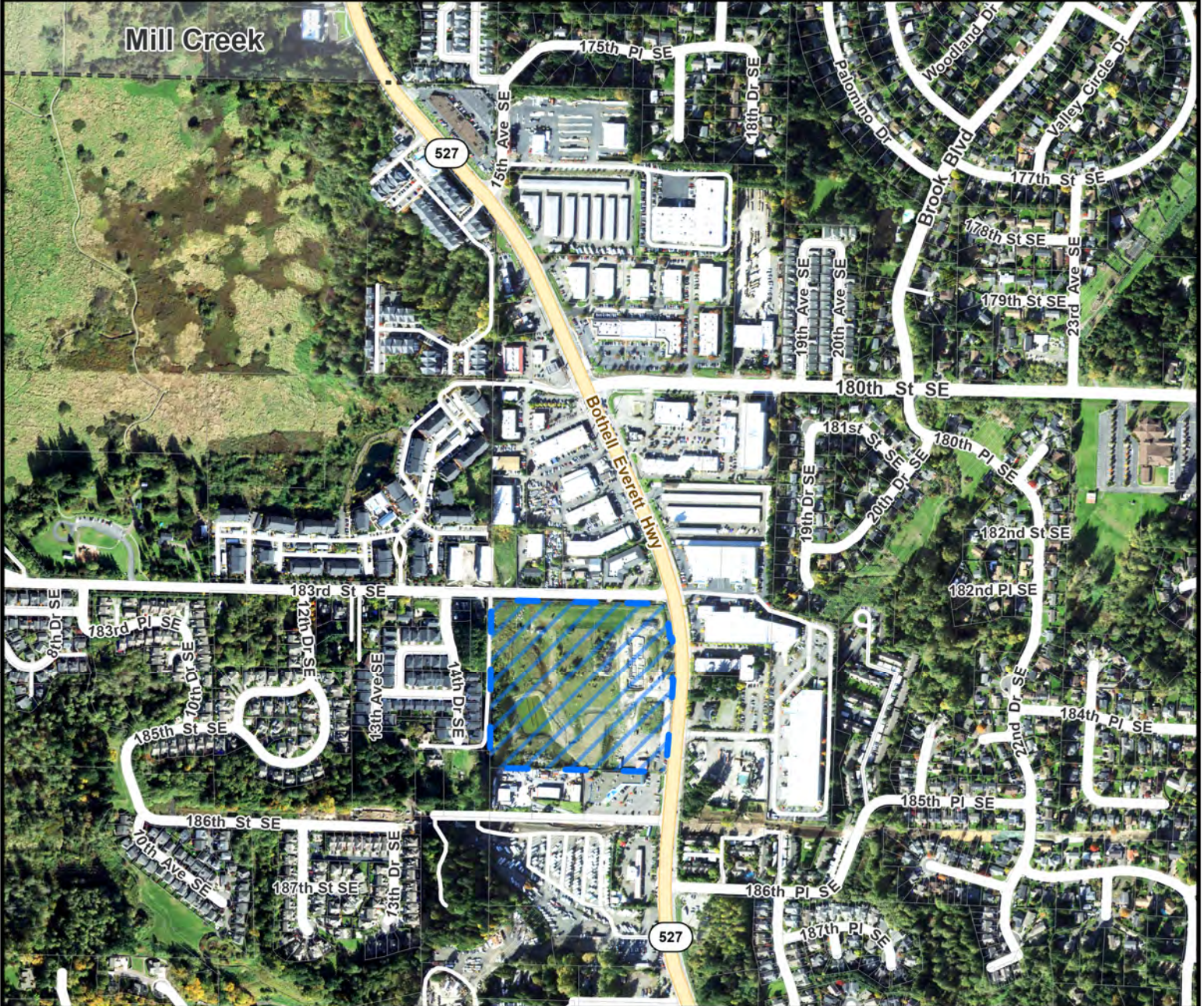
# CS Real Estate Development - (SW10)

EXHIBIT # 3.1.22D

FILE MOT 21-147



## Proposed Future Land Use Redesignation and Rezone Comprehensive Plan Amendment




 Proposed FLU Redesignation and Rezone

 Urban Growth Area Boundary

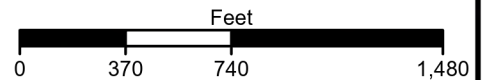
 City Boundary

 Parcels

 Major Roads

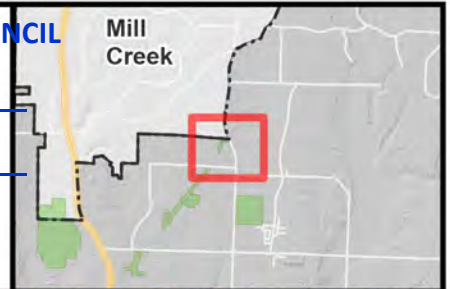
 Streets

2019 Aerial Imagery

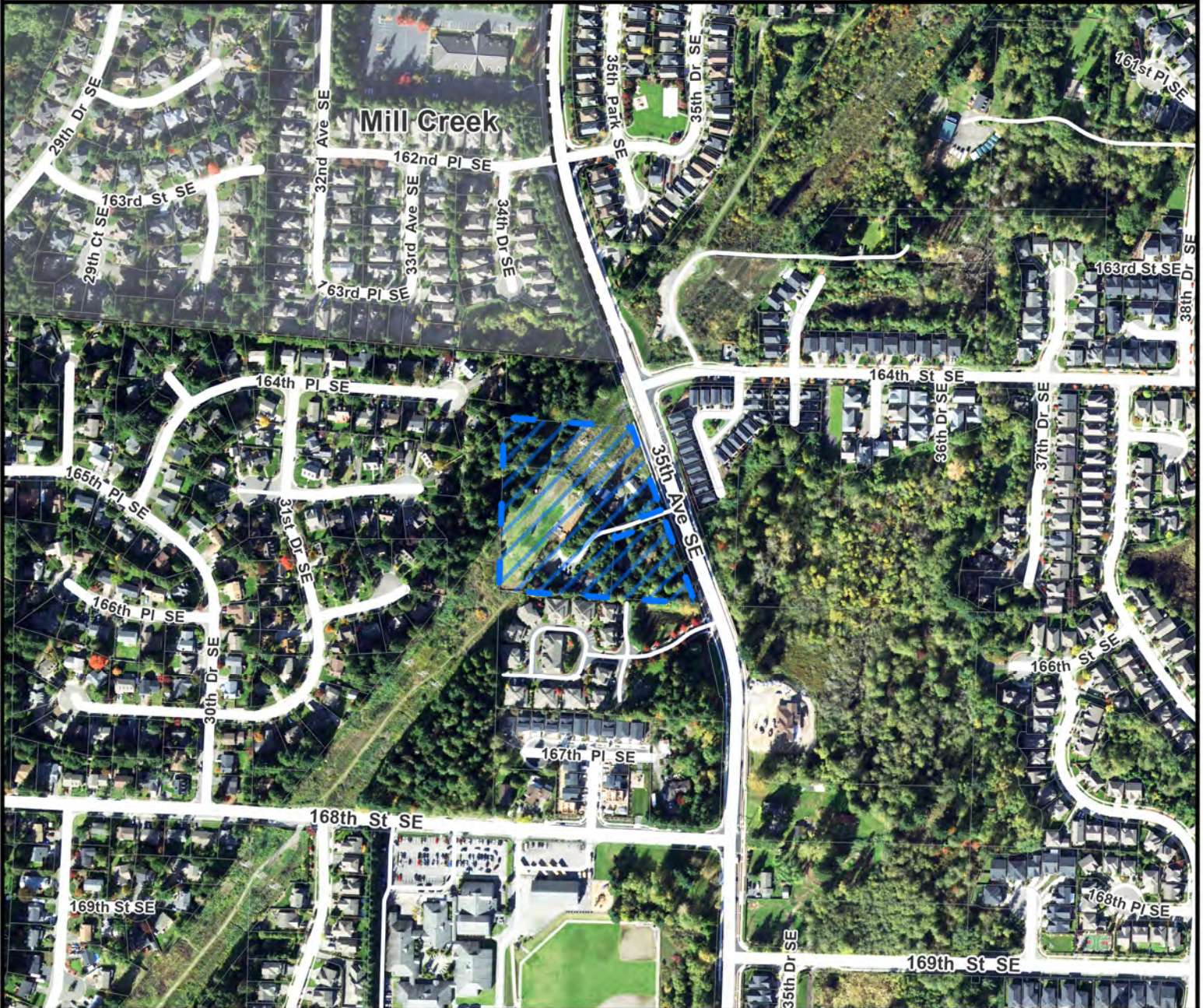


**SNOHOMISH COUNTY DATA and MAP DISCLAIMER**

All maps, data, and information set forth herein ("Data"), are for illustrative purposes only and are not to be considered an official citation to, or representation of, the Snohomish County Code. Amendments and updates to the Data, together with other applicable County Code provisions, may apply which are not depicted herein. Snohomish County makes no representation or warranty concerning the content, accuracy, currency, completeness or quality of the Data contained herein and expressly disclaims any warranty of merchantability or fitness for any particular purpose. All persons accessing or otherwise using this Data assume all responsibility for use thereof and agree to hold Snohomish County harmless from and against any damages, loss, claim or liability arising out of any error, defect or omission contained within said Data. Washington State Law, Ch. 42.56 RCW, prohibits state and local agencies from providing access to lists of individuals intended for use for commercial purposes and, thus, no commercial use may be made of any Data comprising lists of individuals contained herein.




Proposed Future Land Use Redesignation and Rezone  
Comprehensive Plan Amendment




 Proposed FLU Redesignation and Rezone

 Urban Growth Area Boundary

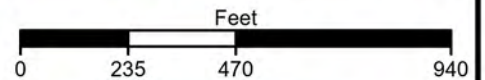
 City Boundary

 Parcels

 Major Roads

 Streets

2019 Aerial Imagery



SNOHOMISH COUNTY DATA and MAP DISCLAIMER

All maps, data, and information set forth herein ("Data"), are for illustrative purposes only and are not to be considered an official citation to, or representation of, the Snohomish County Code. Amendments and updates to the Data, together with other applicable County Code provisions, may apply which are not depicted herein. Snohomish County makes no representation or warranty concerning the content, accuracy, currency, completeness or quality of the Data contained herein and expressly disclaims any warranty of merchantability or fitness for any particular purpose. All persons accessing or otherwise using this Data assume all responsibility for use thereof and agree to hold Snohomish County harmless from and against any damages, loss, claim or liability arising out of any error, defect or omission contained within said Data. Washington State Law, Ch. 42.56 RCW, prohibits state and local agencies from providing access to lists of individuals intended for use for commercial purposes and, thus, no commercial use may be made of any Data comprising lists of individuals contained herein.





Docket XXI - Initial Review  
**RNK Investments - (SW15)**  
**Urban Growth Area (UGA) Expansion**

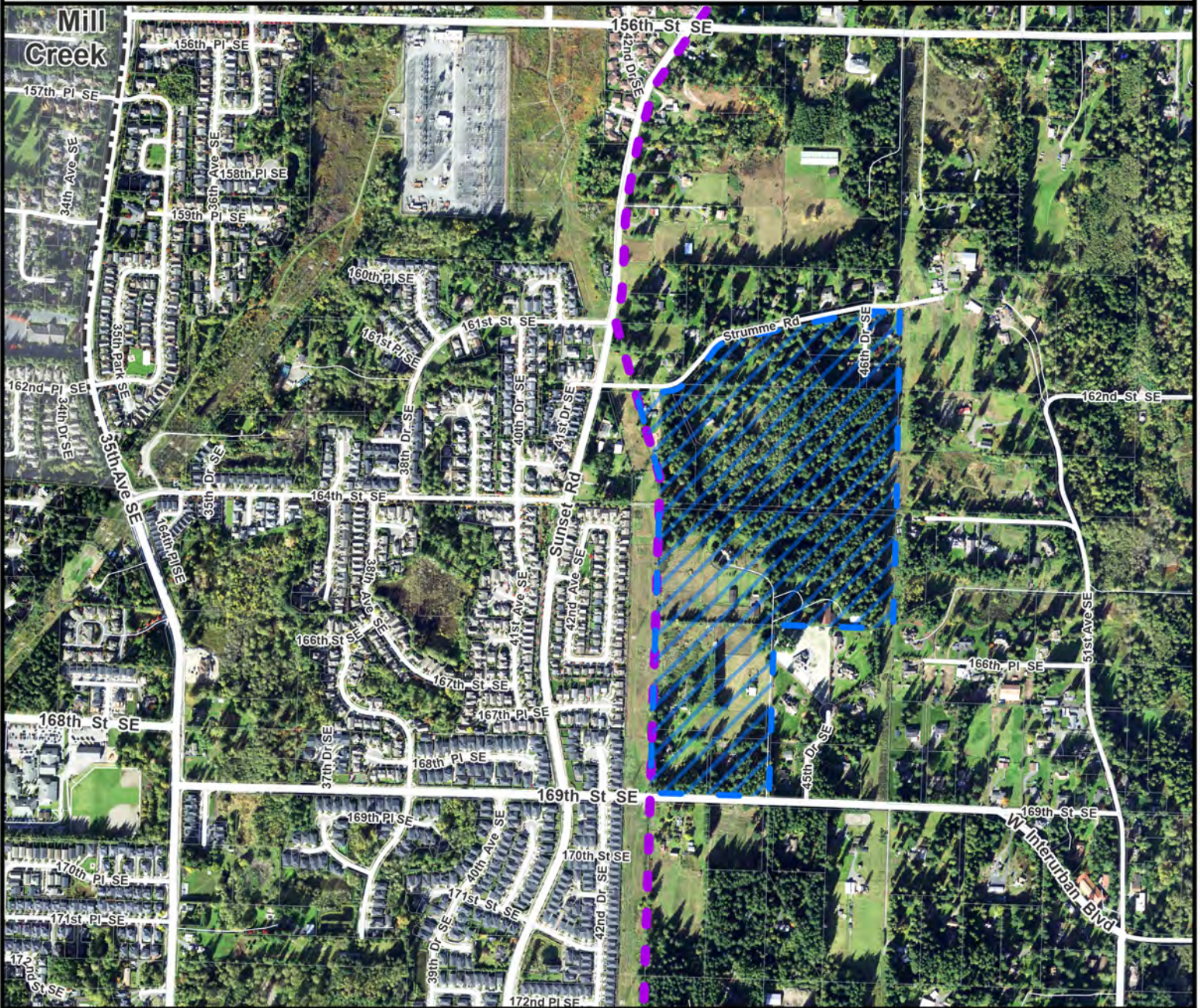
SNOHOMISH COUNTY COUNCIL




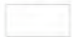


EXHIBIT # 3.1.27D

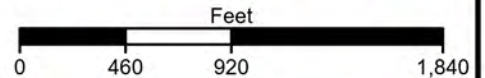
FILE MOT 21-147



Proposed Future Land Use Redesignation and Rezone  
 Comprehensive Plan Amendment



-  Proposed FLU Redesignation and Rezone
  -  Urban Growth Area Boundary
  -  City Boundary
  -  Parcels
  -  Major Roads
  -  Streets
- 2019 Aerial Imagery



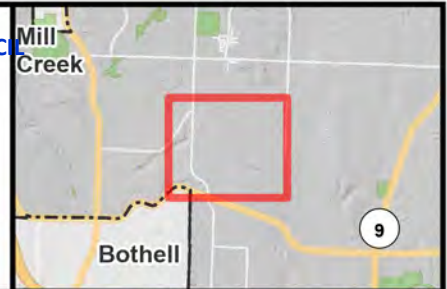
SNOHOMISH COUNTY DATA and MAP DISCLAIMER

All maps, data, and information set forth herein ("Data"), are for illustrative purposes only and are not to be considered an official citation to, or representation of, the Snohomish County Code. Amendments and updates to the Data, together with other applicable County Code provisions, may apply which are not depicted herein. Snohomish County makes no representation or warranty concerning the content, accuracy, currency, completeness or quality of the Data contained herein and expressly disclaims any warranty of merchantability or fitness for any particular purpose. All persons accessing or otherwise using this Data assume all responsibility for use thereof and agree to hold Snohomish County harmless from and against any damages, loss, claim or liability arising out of any error, defect or omission contained within said Data. Washington State Law, Ch. 42.56 RCW, prohibits state and local agencies from providing access to lists of individuals intended for use for commercial purposes and, thus, no commercial use may be made of any Data comprising lists of individuals contained herein.

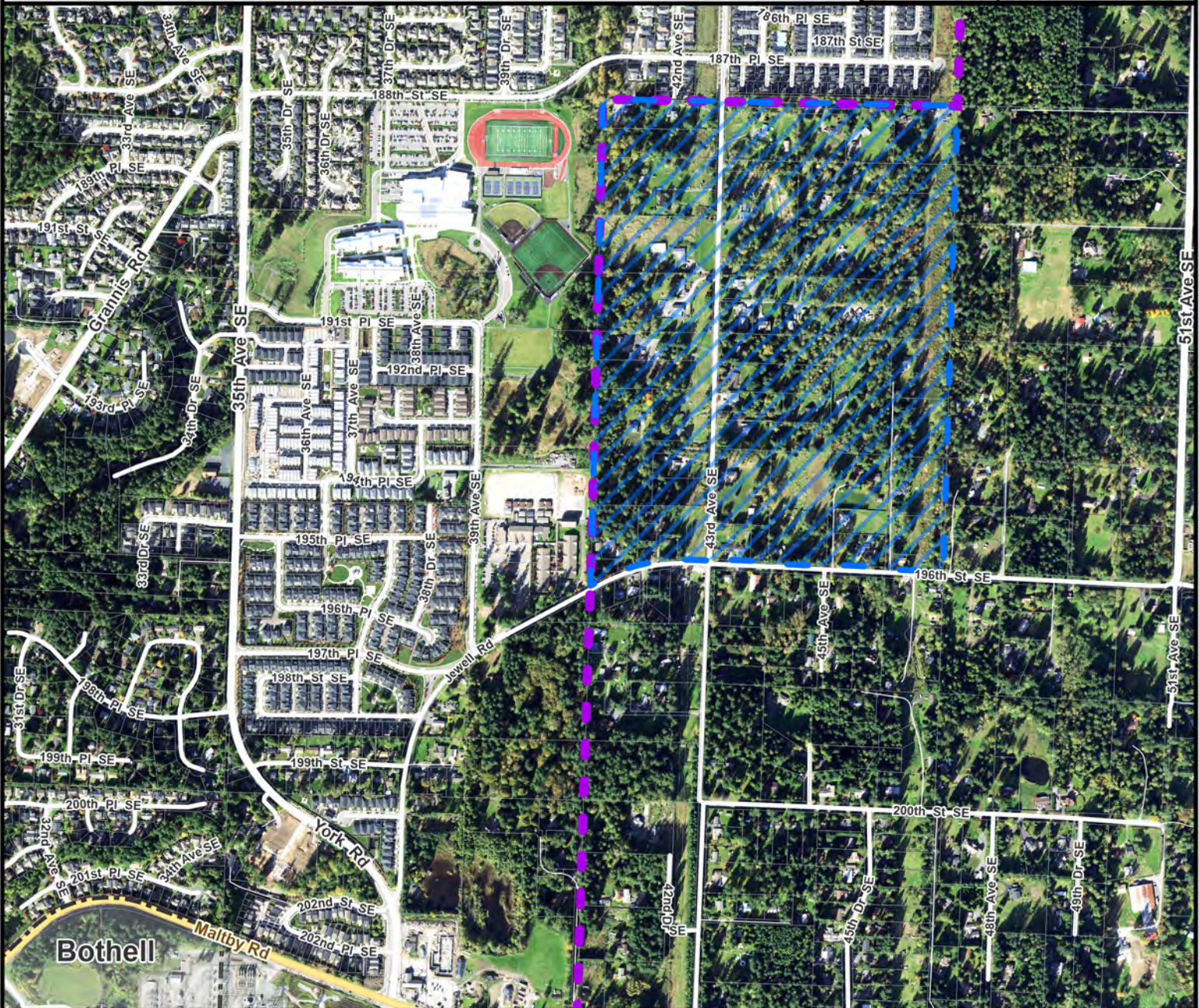





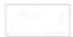


Docket XXI - Initial Review  
**Village Life - (SW16)**  
 Urban Growth Area (UGA) Expansion

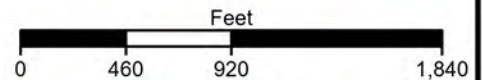
SNOHOMISH COUNTY COUNCIL  
 EXHIBIT # 3.1.28D  
 MOT 21-147



Proposed Future Land Use Redesignation and Rezone  
 Comprehensive Plan Amendment



-  Proposed FLU Redesignation and Rezone
  -  Urban Growth Area Boundary
  -  City Boundary
  -  Parcels
  -  Major Roads
  -  Streets
- 2019 Aerial Imagery



SNOHOMISH COUNTY DATA and MAP DISCLAIMER

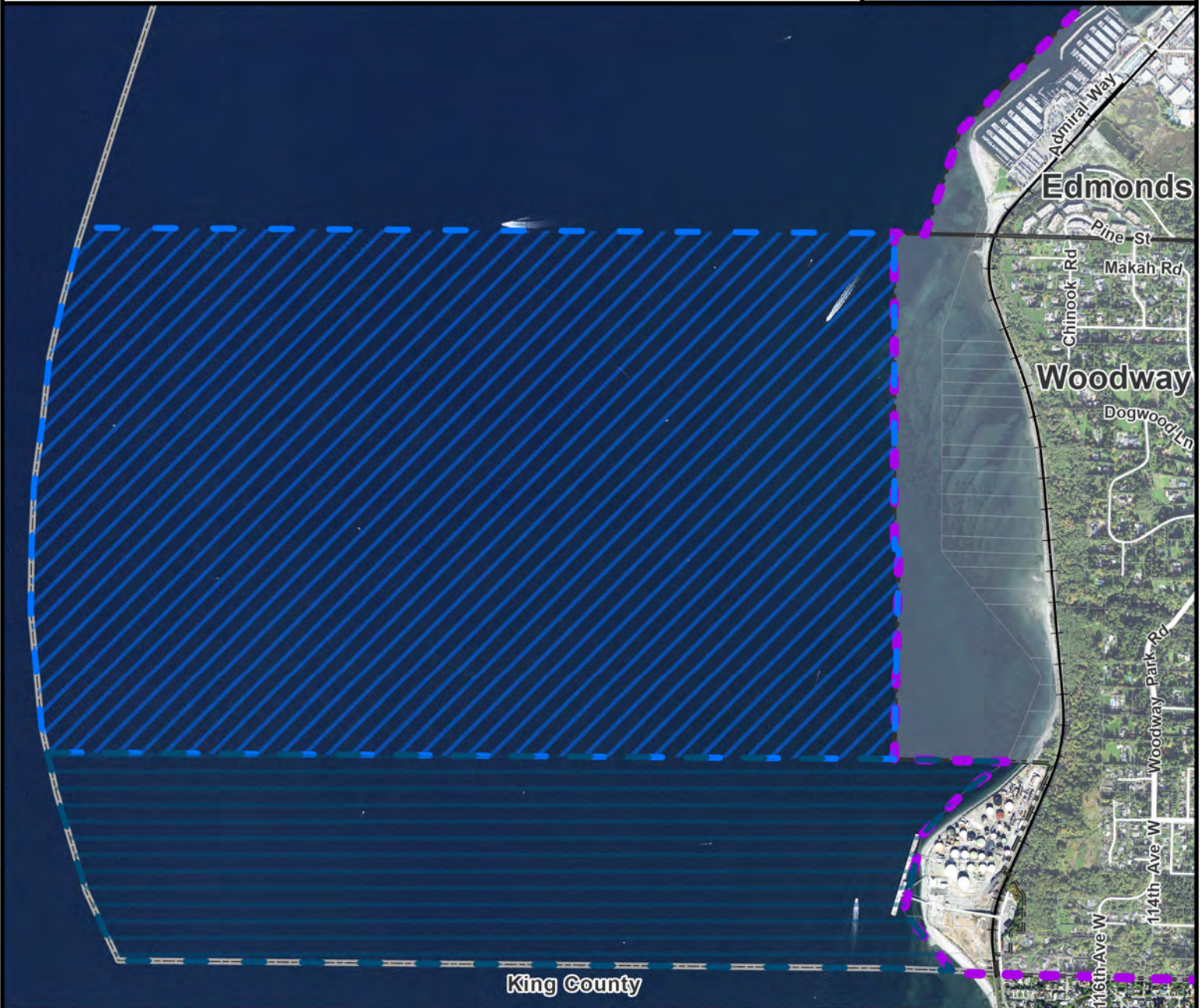
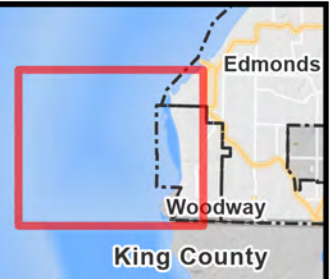
All maps, data, and information set forth herein ("Data"), are for illustrative purposes only and are not to be considered an official citation to, or representation of, the Snohomish County Code. Amendments and updates to the Data, together with other applicable County Code provisions, may apply which are not depicted herein. Snohomish County makes no representation or warranty concerning the content, accuracy, currency, completeness or quality of the Data contained herein and expressly disclaims any warranty of merchantability or fitness for any particular purpose. All persons accessing or otherwise using this Data assume all responsibility for use thereof and agree to hold Snohomish County harmless from and against any damages, loss, claim or liability arising out of any error, defect or omission contained within said Data. Washington State Law, Ch. 42.56 RCW, prohibits state and local agencies from providing access to lists of individuals intended for use for commercial purposes and, thus, no commercial use may be made of any Data comprising lists of individuals contained herein.

Docket XXI - Initial Review  
 Town of Woodway - (SW17)  
 Urban Growth Area (UGA) Expansion  
 Proposed Comprehensive Plan Amendment

SNOHOMISH COUNTY COUNCIL

EXHIBIT # 3.1.29D

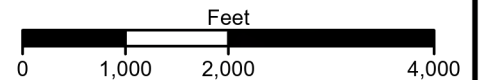
FILE MOT 21-147



Proposed Comprehensive Plan Amendment

- Proposed SWUGA Expansion (Part 1)
- Proposed SWUGA Expansion (Part 2)
- Urban Growth Area Boundary
- City Boundary
- Parcels
- Major Roads
- Streets

2019 Aerial Imagery



SNOHOMISH COUNTY DATA and MAP DISCLAIMER

All maps, data, and information set forth herein ("Data"), are for illustrative purposes only and are not to be considered an official citation to, or representation of, the Snohomish County Code. Amendments and updates to the Data, together with other applicable County Code provisions, may apply which are not depicted herein. Snohomish County makes no representation or warranty concerning the content, accuracy, currency, completeness or quality of the Data contained herein and expressly disclaims any warranty of merchantability or fitness for any particular purpose. All persons accessing or otherwise using this Data assume all responsibility for use thereof and agree to hold Snohomish County harmless from and against any damages, loss, claim or liability arising out of any error, defect or omission contained within said Data. Washington State Law, Ch. 42.56 RCW, prohibits state and local agencies from providing access to lists of individuals intended for use for commercial purposes and, thus, no commercial use may be made of any Data comprising lists of individuals contained herein.

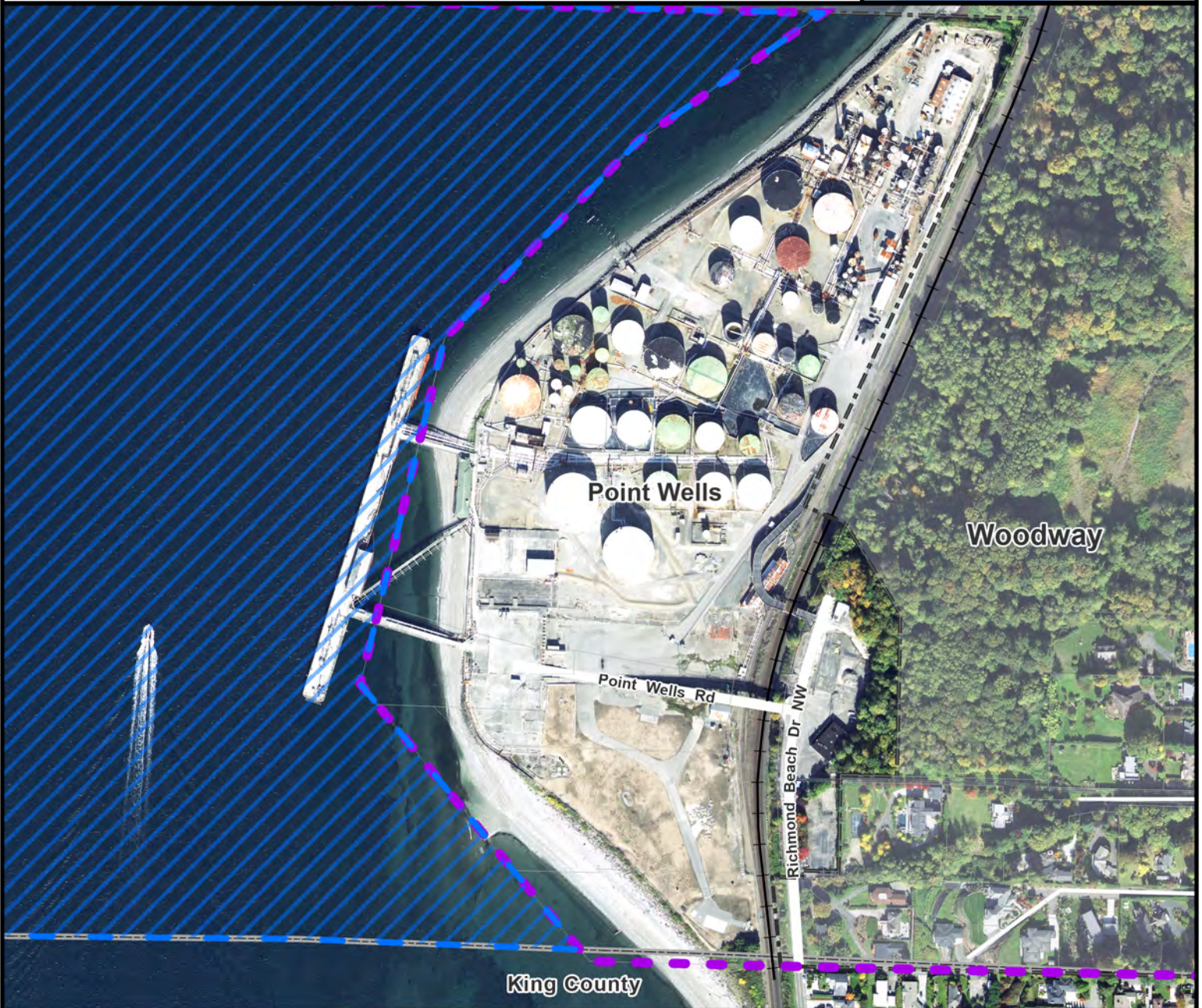
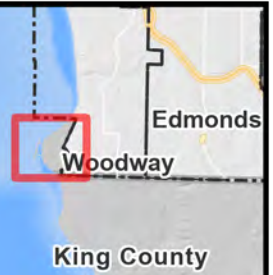
Docket XXI - Initial Review  
 Town of Woodway - (SW17)  
 Urban Growth Area (UGA) Expansion

Proposed Comprehensive Plan Amendment







SNOHOMISH COUNTY COUNCIL

EXHIBIT # 3.1.29D.1

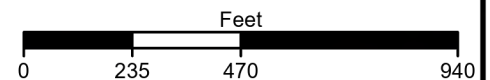
FILE MOT 21-147



Proposed Comprehensive Plan Amendment

-  Proposed SWUGA Expansion (Part 2)
-  Urban Growth Area Boundary
-  City Boundary
-  Parcels
-  Major Roads
-  Streets

2019 Aerial Imagery



SNOHOMISH COUNTY DATA and MAP DISCLAIMER

All maps, data, and information set forth herein ("Data"), are for illustrative purposes only and are not to be considered an official citation to, or representation of, the Snohomish County Code. Amendments and updates to the Data, together with other applicable County Code provisions, may apply which are not depicted herein. Snohomish County makes no representation or warranty concerning the content, accuracy, currency, completeness or quality of the Data contained herein and expressly disclaims any warranty of merchantability or fitness for any particular purpose. All persons accessing or otherwise using this Data assume all responsibility for use thereof and agree to hold Snohomish County harmless from and against any damages, loss, claim or liability arising out of any error, defect or omission contained within said Data. Washington State Law, Ch. 42.56 RCW, prohibits state and local agencies from providing access to lists of individuals intended for use for commercial purposes and, thus, no commercial use may be made of any Data comprising lists of individuals contained herein.