



Broadband Update

Presentation to Admin Session
Jason Biermann, Senior Policy Advisor
January 7, 2025

Agenda

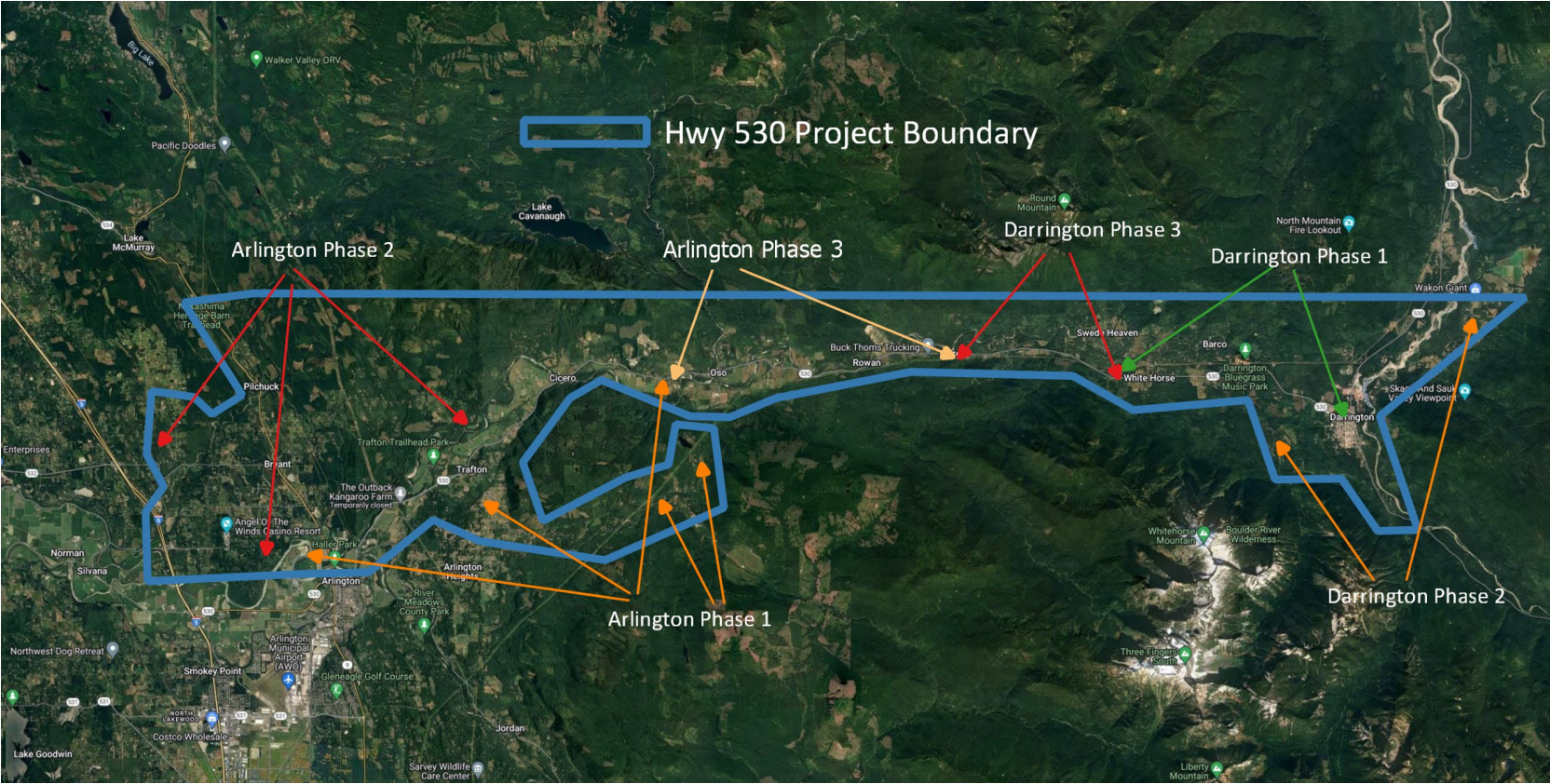
- **ARPA Projects**
 - Infrastructure
 - Digital equity
 - Planning
- **Broadband Equity Access and Deployment (BEAD)**
- **Upcoming**



ARPA-Funded – Infrastructure

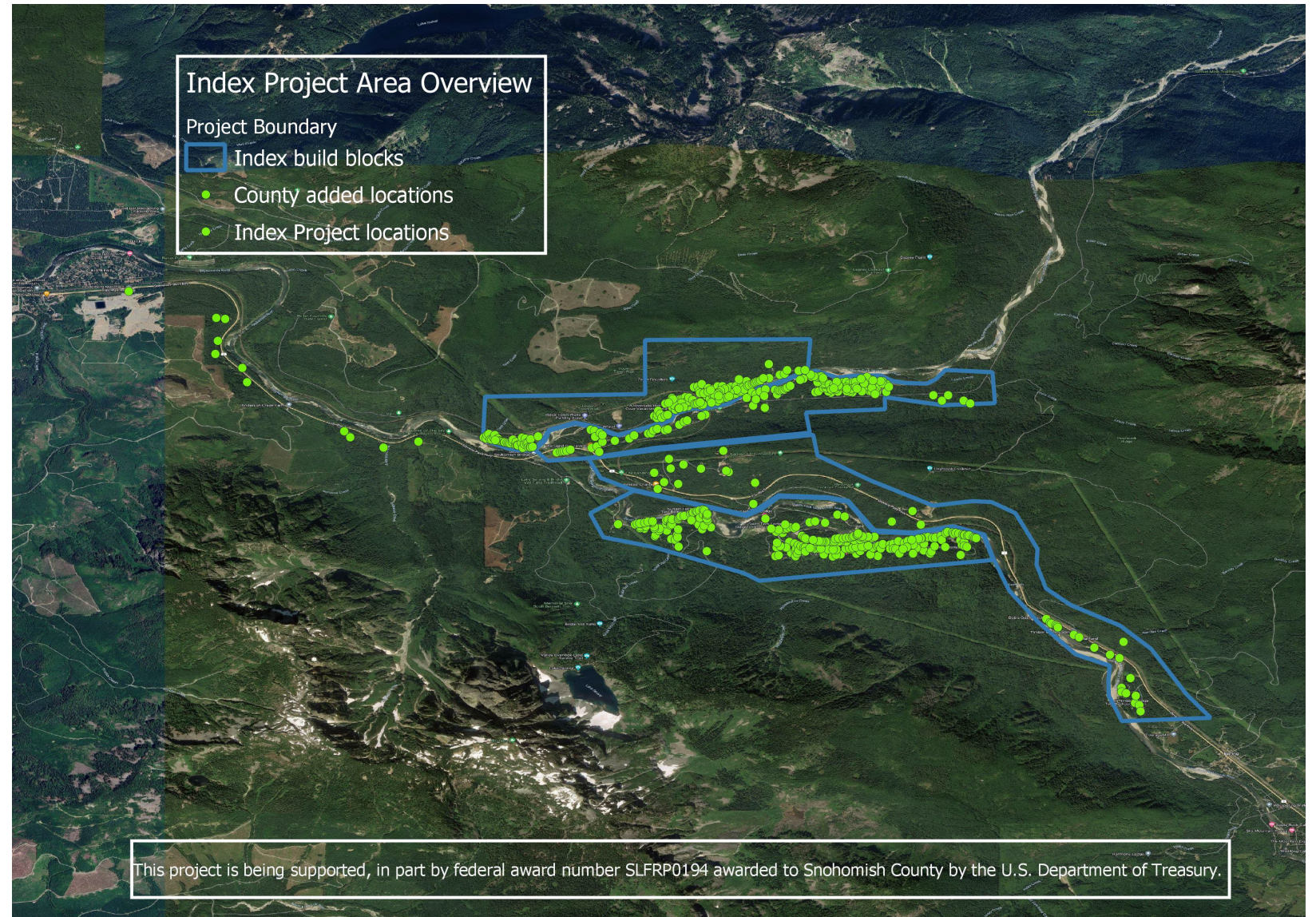
- Expand infrastructure into rural areas.
- Address public safety concerns created by lack of reliable internet.
- Bring access to support education and telemedicine.

- Construction underway
- Est. completion – Oct 2025
- Locations served – ~4500
- Cost – \$16,713,615
- Fund source – WSB0 (SLFRF)



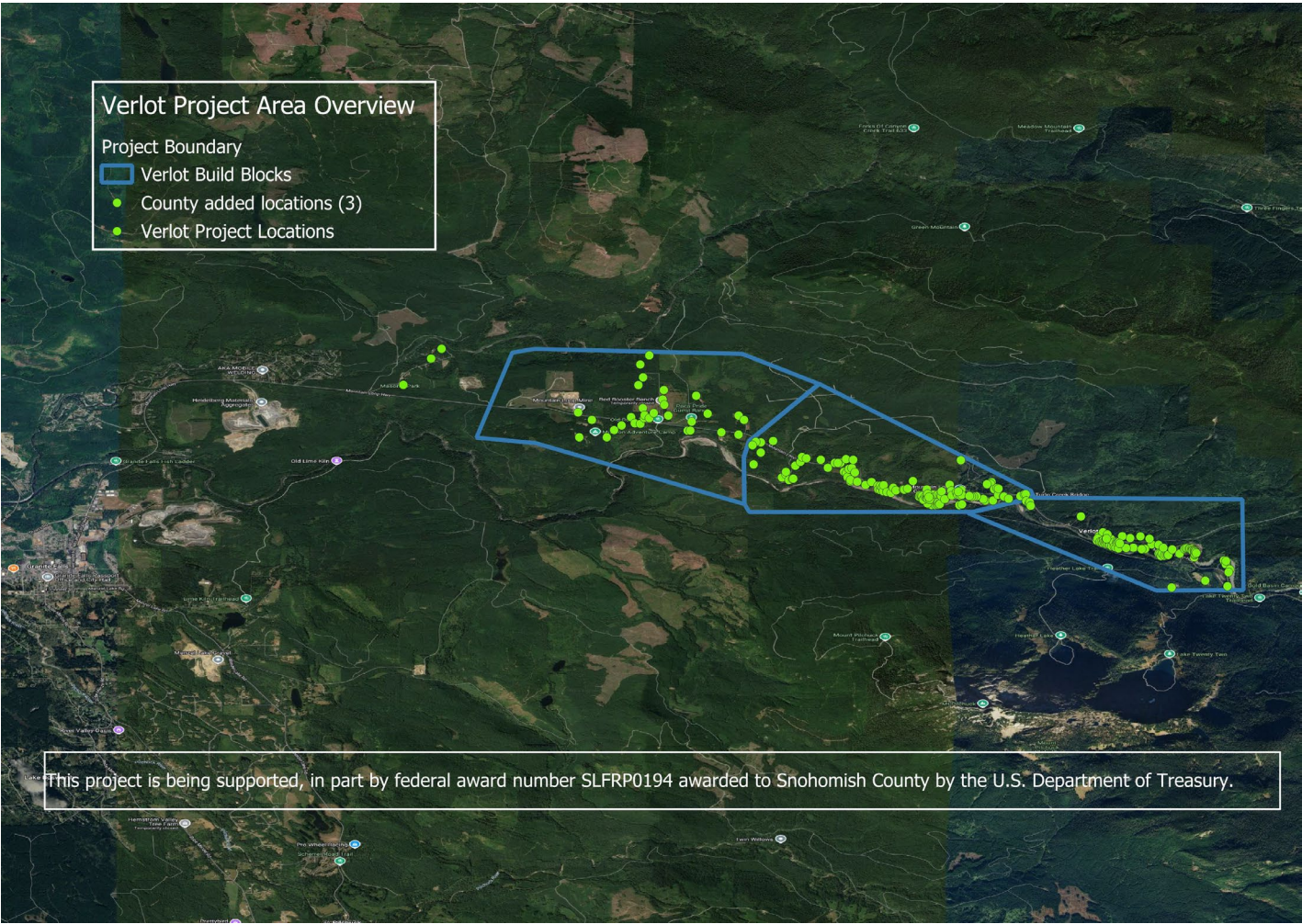
SR-530

- Prep work underway
- Est. completion – Sep 2026
- Locations served – ~1000
- Cost – \$2,739,598
- Fund source – County (SLFRF)

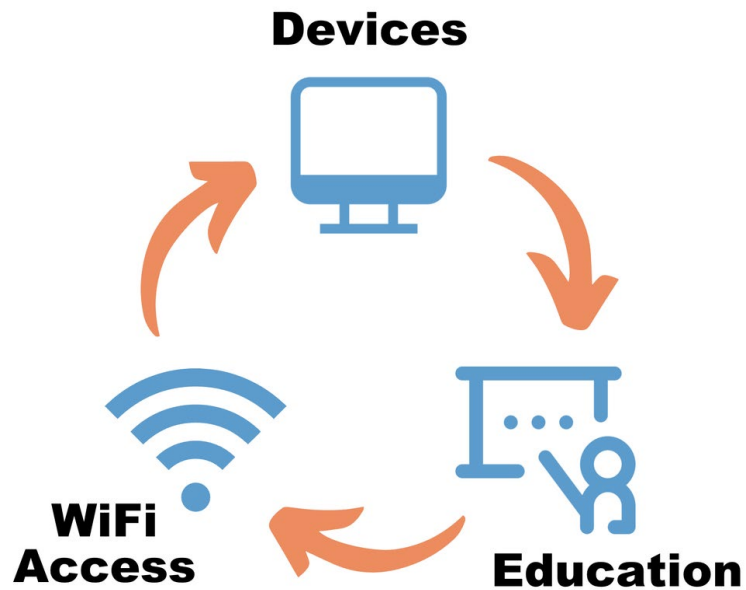


Index

- Prep work underway
- Est. completion – Sep 2026
- Locations served – ~250
- Cost – \$1,624,357
- Fund source – County (SLFRF)



Verlot

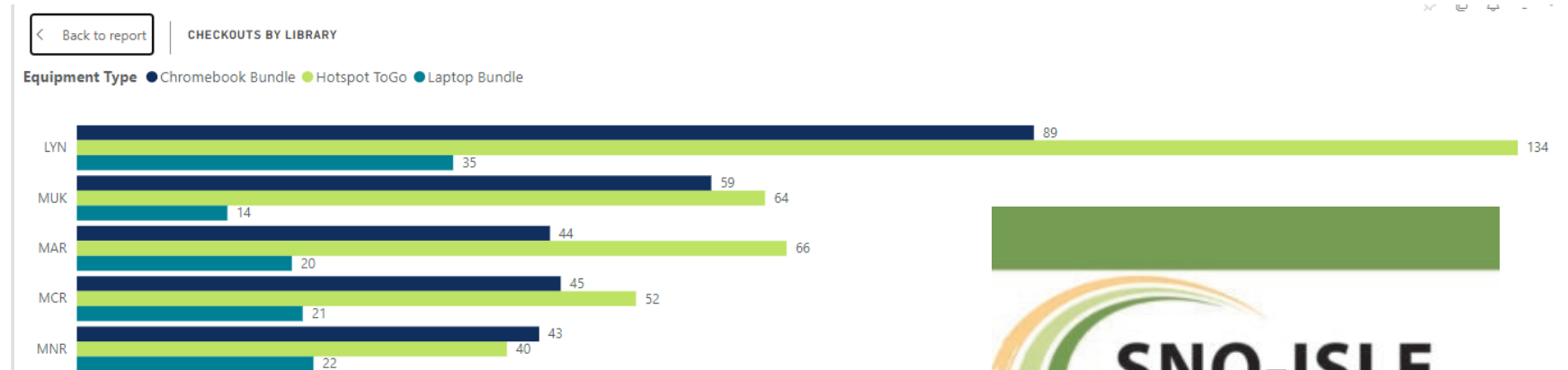


Digital Equity

- 18,470 subscribers at end of Affordable Connectivity Program (June 1, 2024)
- Partnership with Sno-Isle Libraries
- Purchased 500 Chromebooks, 500 hotspots, 200 laptops
- Supports access to “digital navigator” to assist
- Cost – \$1,500,000
- Fund source – County (SLFRF)

“In April 2024, we had 191 checkouts for hotspots and laptop kits (laptop + hotspot), and by September 2024, this number had grown to 392 checkouts for hotspots, Chromebook kits and laptop kits, representing more than a 50% increase.

From 9/16/2024 to 12/31/2024, 774 unique customers and 1716 checkouts.”

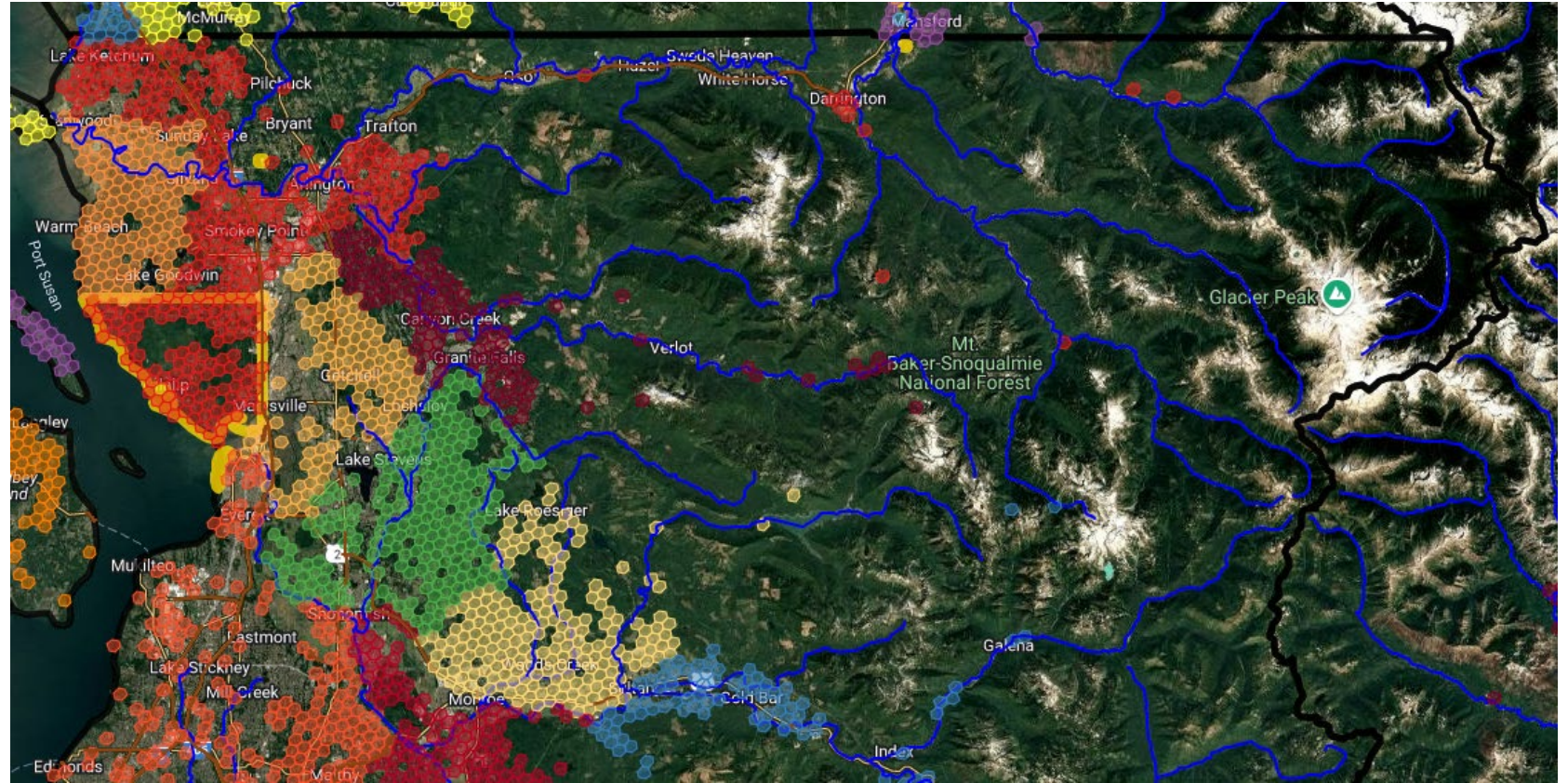


Planning

- Purpose – Inform County's future broadband efforts
- Status – Final draft completed and under final review
 - 273-page report plus 80 pages of exhibits
 - *Many thanks to the Broadband Taskforce!!!!*
- Cost – \$163,900
- Fund source – County (SLFRF)



- NTIA awarded \$1.23B to Washington
- Priorities are unserved, underserved, community anchor institutions, equity
- County - 10 project areas
 - 9569 locations
- Tulalips – 1 project area
 - 3934 locations



Broadband Equity Access and Deployment (BEAD)

BEAD Process – Internet for All

- Controlled by Washington State Broadband Office (WSBO).
- May, consist of multiple funding rounds.
 - Round 1 currently open until 1/31/2025
 - If necessary, rounds 2 and 3
 - WSBO must send final proposal to NTIA by May 2025
- Process presents significant policy challenges.
 - Funding – Overall and state match
 - Constraints on utilization of hybrid and/or satellite technologies
 - Prioritization of project areas funded in rounds 2 and 3

Upcoming in 2025

Advocacy

- State – Addressing policy issues to ensure maximum benefit of multiple broadband funds.
- Federal – Continuing support to improve access for low-income families (Affordable Connectivity Program).

BEAD

- Private internet service providers (ISPs) may be seeking public-private partnerships for BEAD.
 - A public entity must be the lead applicant to access state matching funds
- Potential for multiple projects throughout the county.

Digital Equity

- Pending NTIA decision on a \$10M digital equity competitive grant application; partnership among Snohomish, Island, and Sno-Isle.

Outreach

- Providing information to the community to help ensure maximum participation.
- Creating a new “story map” for the County’s website to better inform the public what we’re doing in the broadband space.
- Implementing the broadband study through engagement with the County’s Broadband Action Team (BAT).



Thank you

Jason Biermann

425-754-2679

jason.biermann@co.snohomish.wa.us or

broadband@snoco.org

Key Definitions

Broadband Internet	Fixed broadband services with download speeds of at least 100 megabits per second (Mbps) and upload speeds of at least 20 Mbps
Broadband Serviceable Location (BSL)	A business or residential location in the United States at which mass-market fixed broadband Internet access service is, or can be, installed.
Community Anchor Institution (CAI)	An entity such as a school, library, health clinic, public safety entity, etc. that facilitates greater use of broadband service by vulnerable populations, including low-income individuals, unemployed individuals, children, the incarcerated, and aged individuals.
Digital Equity	The condition in which individuals and communities have the information technology capacity that is needed for full participation in the society and economy of the United States
Underserved Location	A broadband-serviceable location that is (a) not an unserved location, and (b) shows as lacking access to reliable broadband service offered with—(i) a speed of not less than 100 Mbps for downloads; and (ii) a speed of not less than 20 Mbps for uploads; and (iii) latency less than or equal to 100 milliseconds
Unserved Location	A broadband-serviceable location that shows as (a) having no access to broadband service, or (b) lacking access to reliable broadband service offered with—(i) a speed of not less than 25 Mbps for downloads; and (ii) a speed of not less than 3 Mbps for uploads; and (iii) latency less than or equal to 100 milliseconds