

# Collaborative Engagement

Department of Natural Resources  
*and*  
Snohomish County

Duane Emmons, Assistant Deputy Supervisor  
for State Uplands



September 17th, 2024



# Agenda

- Overview of trust lands in Snohomish County
- Information on revenue to beneficiaries
- Defining old-growth & older forests
- DNR's older forest targets in Snohomish County
- Planned sales in Snohomish County

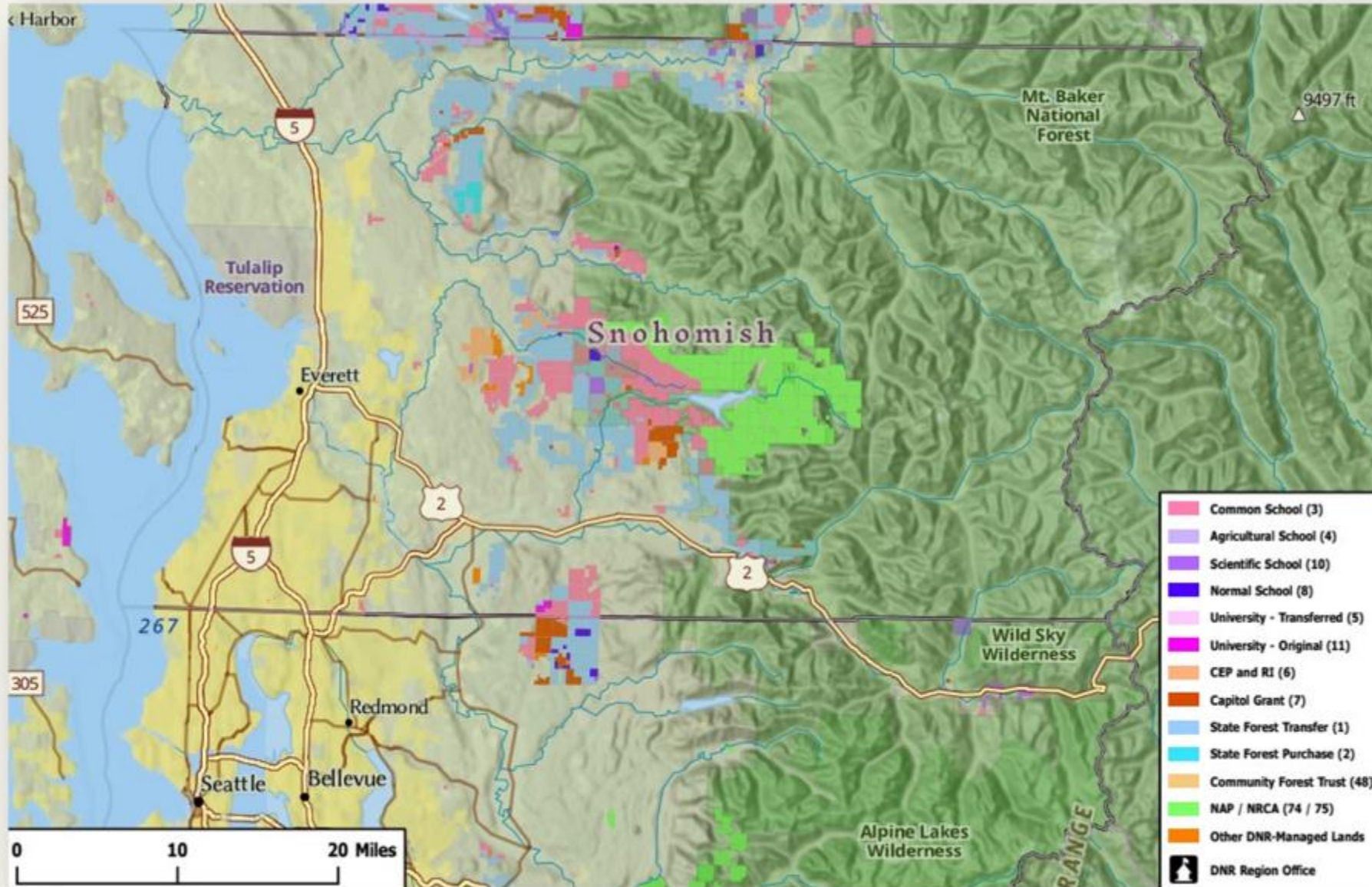


# Department of Natural Resources

- Manages 5.6 million acres of forest, range, agricultural, aquatic, and commercial lands.
- ~2.9 million acres is State Trust Lands
- DNR is the Trust Manager
- State of Washington is the Trustee
- Snohomish County and its junior taxing districts are the Trust Beneficiaries of just over 64,000 acres of trust lands.



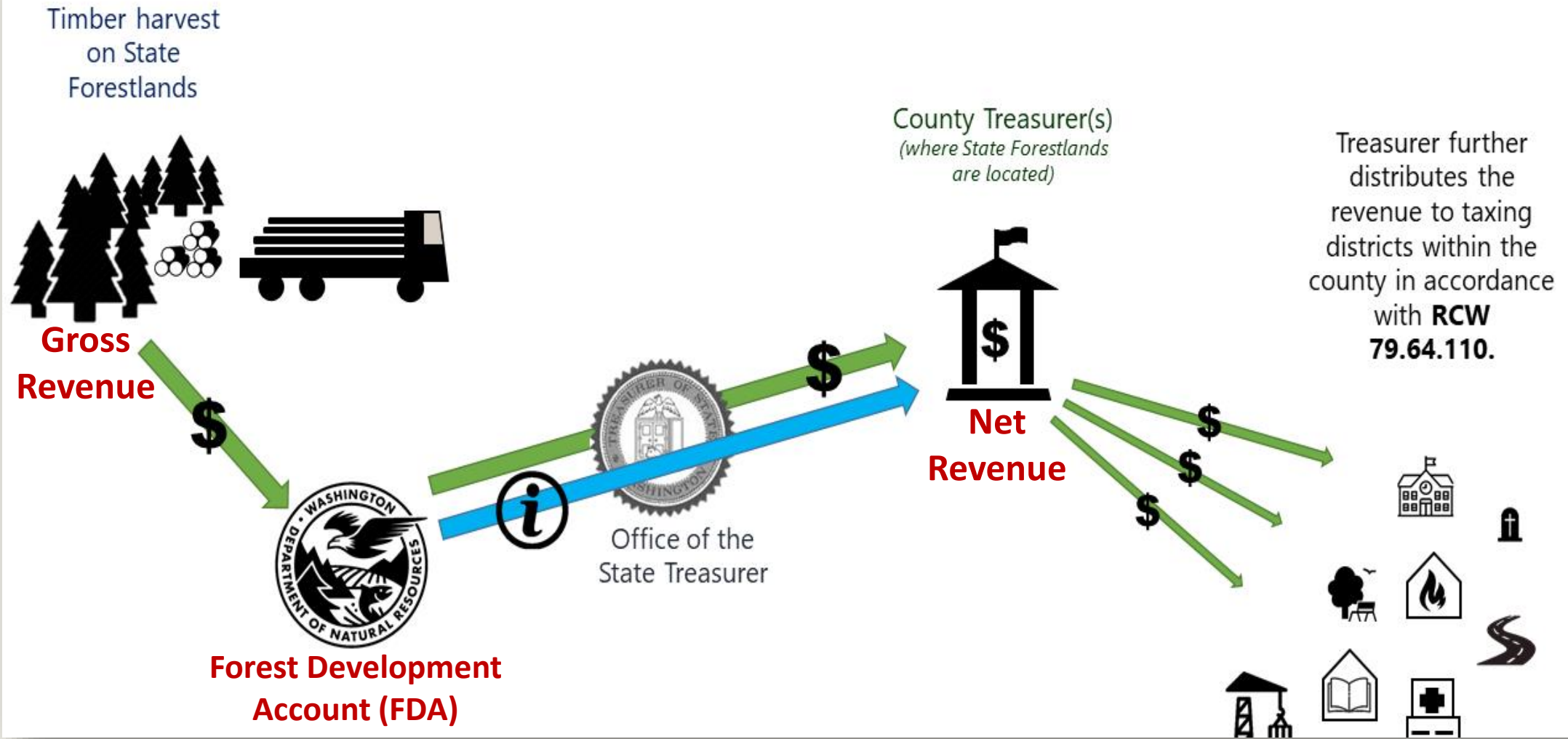
# DNR Managed Lands in Snohomish County



# DNR Trust Lands in Snohomish County

	Forested	Non-forested	Total Acres
01 - State Forest Transfer	59,961	2,519	62,480
02 - State Forest Purchase	1,646	35	1,681
03 - Common School and Indemnity	37,902	2,289	40,191
04 - Agricultural School	2,758	110	2,868
06 - Charitable/Ed/Penal & Reformatory Inst.	4,185	446	4,631
07 - Capitol Grant	2,866	169	3,035
08 - Normal School	611	10	622
10 - Scientific School	2,017	92	2,109
11 - University	324	16	339
<b>Total Acres</b>	<b>112,270</b>	<b>5,686</b>	<b>117,956</b>

# State Forest Transfer Trust Distribution



# Beignet Timber Sale

Timber Sale Information		
County	Acres	Sale Price
Snohomish	147	\$ 2,561,091

Trust Distribution		
County	Trust 01	Tax Code Area
Snohomish	96%	5102, 5106

Revenue Distribution		
	Distribution %	Amount
DNR Forest Development Account (FDA)	25%	\$ 618,439
State Forest Transfer Distribution	75%	\$ 1,855,319



# Beignet Revenue Distribution

<b>Beignet Timber Sale</b>	
<b>County Taxing District Distributions</b>	<b>Total to Fund</b>
County Regular	\$ 129,329
County Conservation Futures	\$ 5,646
Fire District 21 EMS	\$ 104,023
Fire District 25 EMS	\$ 1,003
Hospital Dist. #3 Maintenance	\$ 51,890
Hospital Dist. #3 G.O. Bonds	\$ 98,823
Sno-Isle Intercounty Rural Library	\$ 86,761
Road District	\$ 216,730
Arlington School Dist. Capital Projects	\$ 225,233
Arlington School Dist. Enrichment	\$ 333,518
State School 1	\$ 392,010
State School 2	\$ 210,354
<b>Total:</b>	<b>\$ 1,855,319</b>





# Quarterly Revenue Reporting

- DNR posts a quarterly County Income Report as well as an Annual Report
- DNR averages \$7 million per year in revenue for Snohomish County.
- In 2023 DNR's revenues for Snohomish County were 56% below the 10-year average – only \$2.9 million.



# Scientific Foundation



Forest Ecology and Management 155 (2002) 399–423

Forest Ecology  
and  
Management

[www.elsevier.com/locate/foreco](http://www.elsevier.com/locate/foreco)

## Disturbances and structural development of natural forest ecosystems with silvicultural implications, using Douglas-fir forests as an example

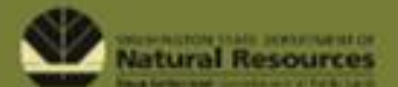
Jerry F. Franklin<sup>a,\*</sup>, Thomas A. Spies<sup>b</sup>, Robert Van Pelt<sup>a</sup>, Andrew B. Carey<sup>c</sup>,  
Dale A. Thornburgh<sup>d</sup>, Dean Rae Berg<sup>e</sup>, David B. Lindenmayer<sup>f</sup>,  
Mark E. Harmon<sup>g</sup>, William S. Keeton<sup>a</sup>, David C. Shaw<sup>h</sup>,  
Ken Bible<sup>a</sup>, Jiquan Chen<sup>i</sup>



## Identifying Mature and Old Forests

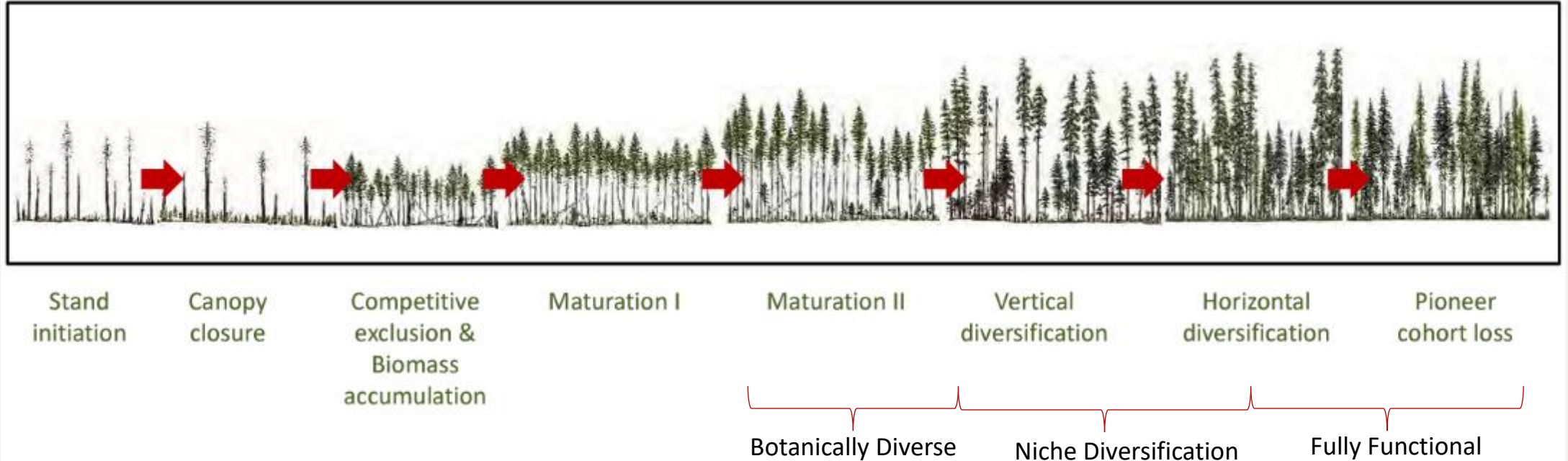
IN WESTERN WASHINGTON

by Robert Van Pelt



Dr. Dan Donato will present on Wednesday, September 18<sup>th</sup> at WSAC timber caucus meeting

# Stand Development Over Time



- Old Growth
- Older Forest
- Mature Forest

# 10 to 15 Percent

## DNR Policy for Sustainable Forests

- DNR intends to ***actively manage*** suitable structurally complex forests to achieve older-forest structures across 10-15 percent of each Western Washington HCP planning unit ***in 70-100 years***. Older-forest structures that contribute to this target are represented by stands in the ***fully functional or niche diversification stage*** of stand development.
- The department will target 10-15 percent of each HCP planning unit for “older” forests – based on structural characteristics – over time.



# All DNR Managed Lands in Snohomish County

County / Land Class	Age Class				Grand Total	Combined Percent Total
	Pre-1900	1901-1945	Younger Forest	Non-Commercially Forested		
<b>Snohomish</b>	<b>3,751</b>	<b>17,849</b>	<b>121,628</b>	<b>14,394</b>	<b>157,622</b>	
NAP/NRCA/Admin Site/Etc.	2,140	7,695	19,708	8,903	38,445	<b>54%</b>
Long-term Deferral	1,466	5,060	14,955	1,982	23,464	
Riparian Areas	8	1,694	19,789	1,251	22,741	
SOMU/ROS/Unstable Slopes	105	2,261	14,750	410	17,526	<b>11%</b>
Post-2000 Final Harvest			26,717	812	27,529	<b>35%</b>
Remaining GEM Lands	33	1,138	25,709	1,036	27,917	

# State Forest Transfer Acres

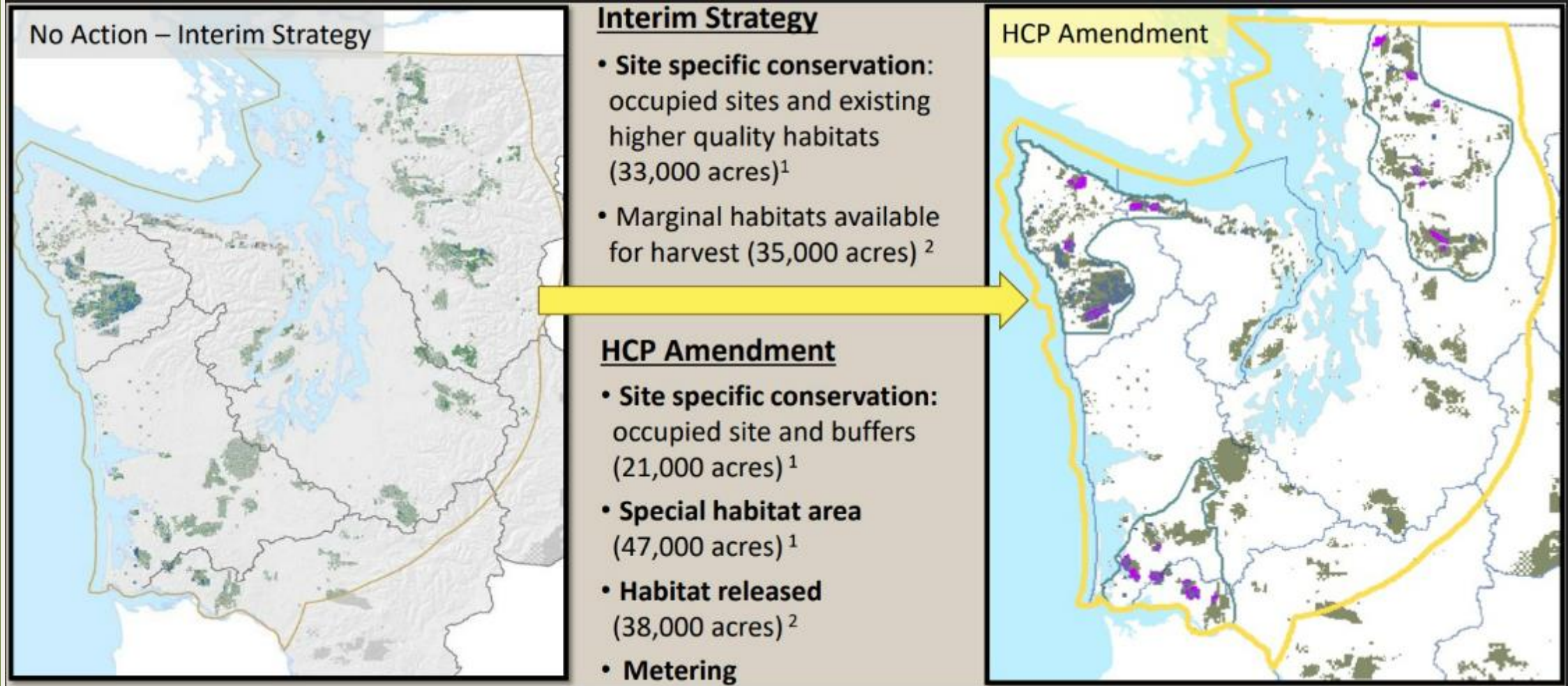
County / Land Class	Age Class				Grand Total	Combined Percent Total
	Pre-1900	Pre-1945	Younger Forest	Non-Commercially Forested		
<b>Snohomish</b>	<b>635</b>	<b>7,362</b>	<b>53,610</b>	<b>2,555</b>	<b>64,161</b>	
Long-term Deferral	556	3,223	8,491	731	13,000	<b>37%</b>
Riparian Areas	4	1,453	8,444	675	10,576	
Special Management Areas	62	1,832	6,040	209	8,143	<b>13%</b>
Immature Forests			18,212	473	18,685	<b>50%</b>
Remaining GEM Lands	13	854	12,423	466	13,756	

# The Board's Direction

## How the HCP Amendment meets Board Direction

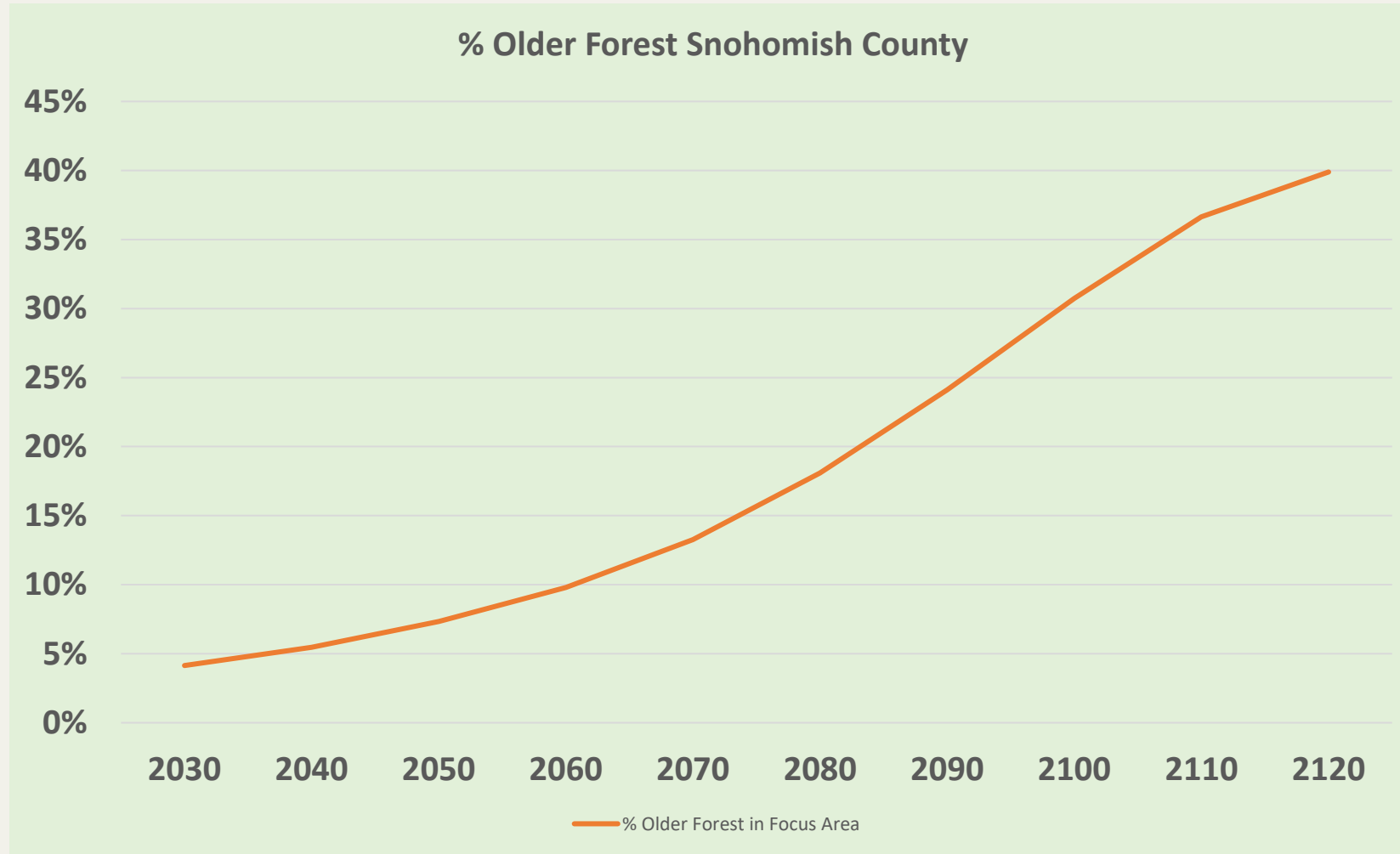
Minimize impacts to marbled murrelets	
Direction	Result
Conserve all existing occupied sites	388 occupied sites conserved (~59,000 acres)
Capture existing habitat in conservation areas	20 Special Habitat Areas created (~47,000 acres)
Meter habitat in strategic locations	5,000 operable/weighted acres protected for first decade
Offset impacts and address uncertainty	
Direction	Result
Buffer occupied sites	100 meter buffers established for all occupied sites (~33,000 acres)
Conservation in strategically important locations	Focus on three strategic locations – Southwest Washington, OESF and the Straits, and North Puget
Increase interior forest	~34,000 acre projected increase of interior forest by Decade 5 (41% increase)
Reduce disproportionate financial impacts	
	Result
	Reduced conservation commitments in Clallam, Pacific, and Wahkiakum counties; University Trust
	Analyzed and disclosed impacts <ul style="list-style-type: none"> <li>• Socioeconomic Analysis - impacted counties Clallam, Pacific, and Wahkiakum</li> <li>• Taxing District Analysis (-)impacted: Clallam (15), Pacific (10), Skagit (10), Snohomish (11), Whatcom (8)</li> </ul>

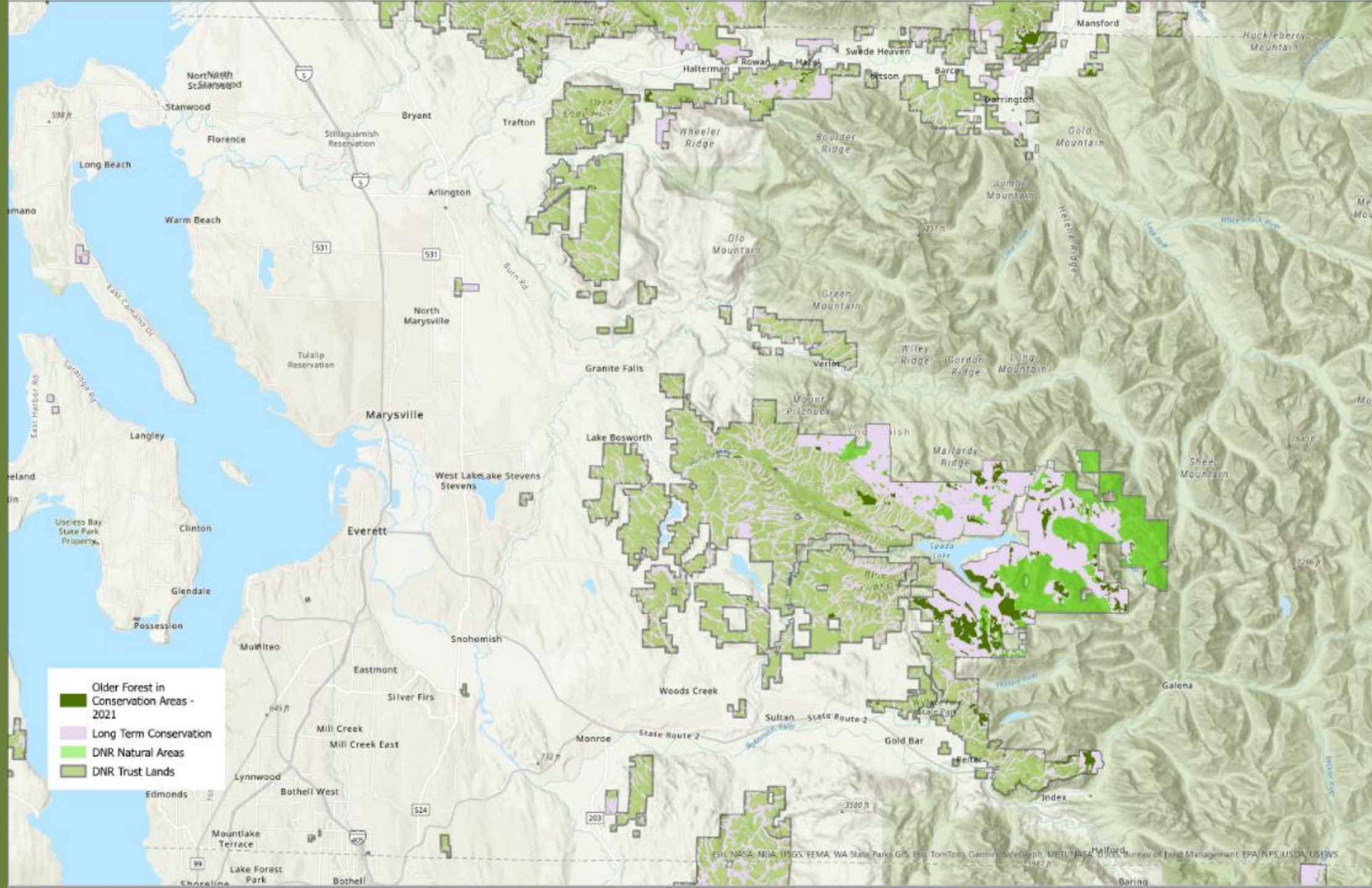
# The Adopted Alternative



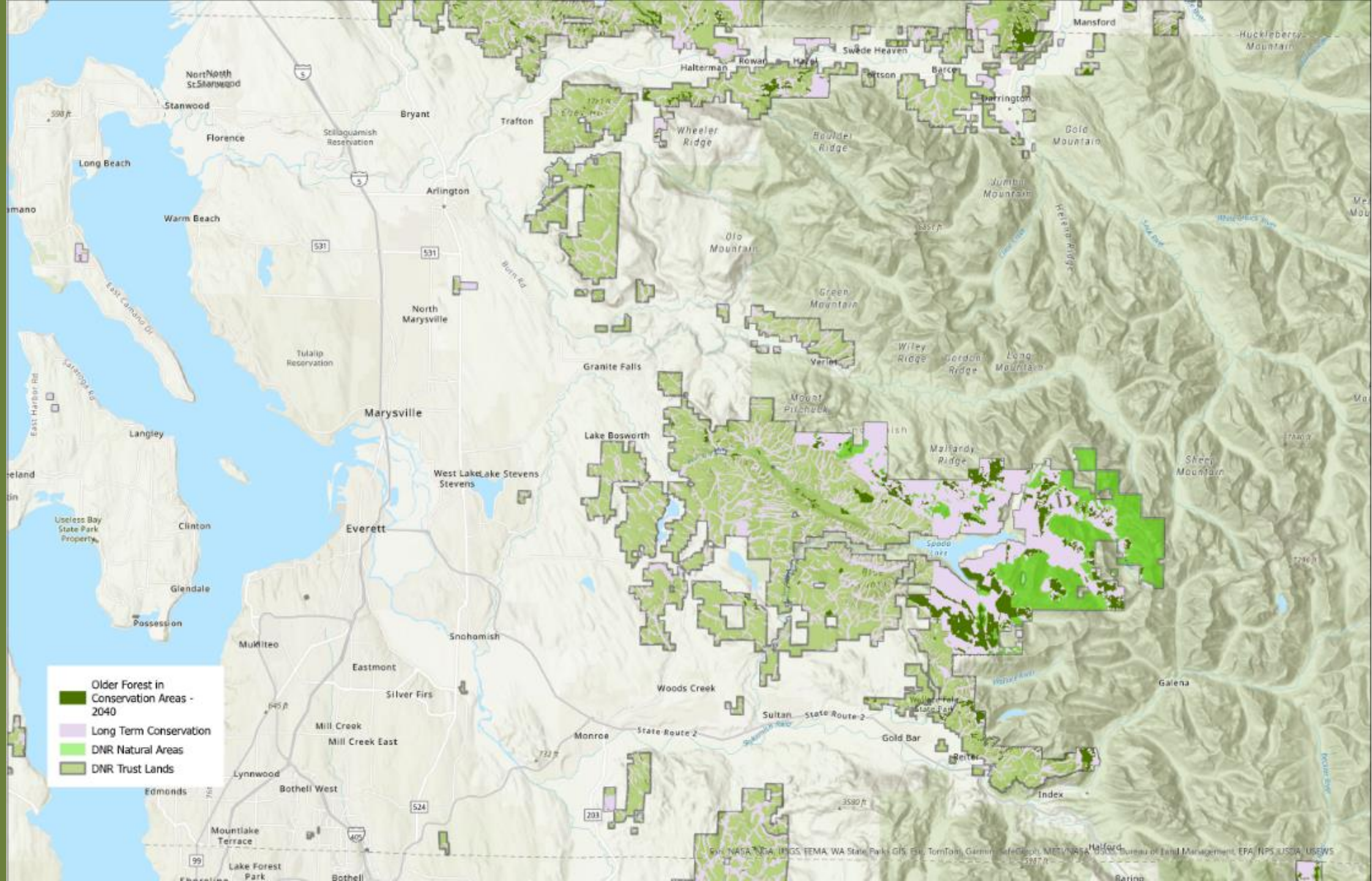


# Old Growth and Older Forests By Decade



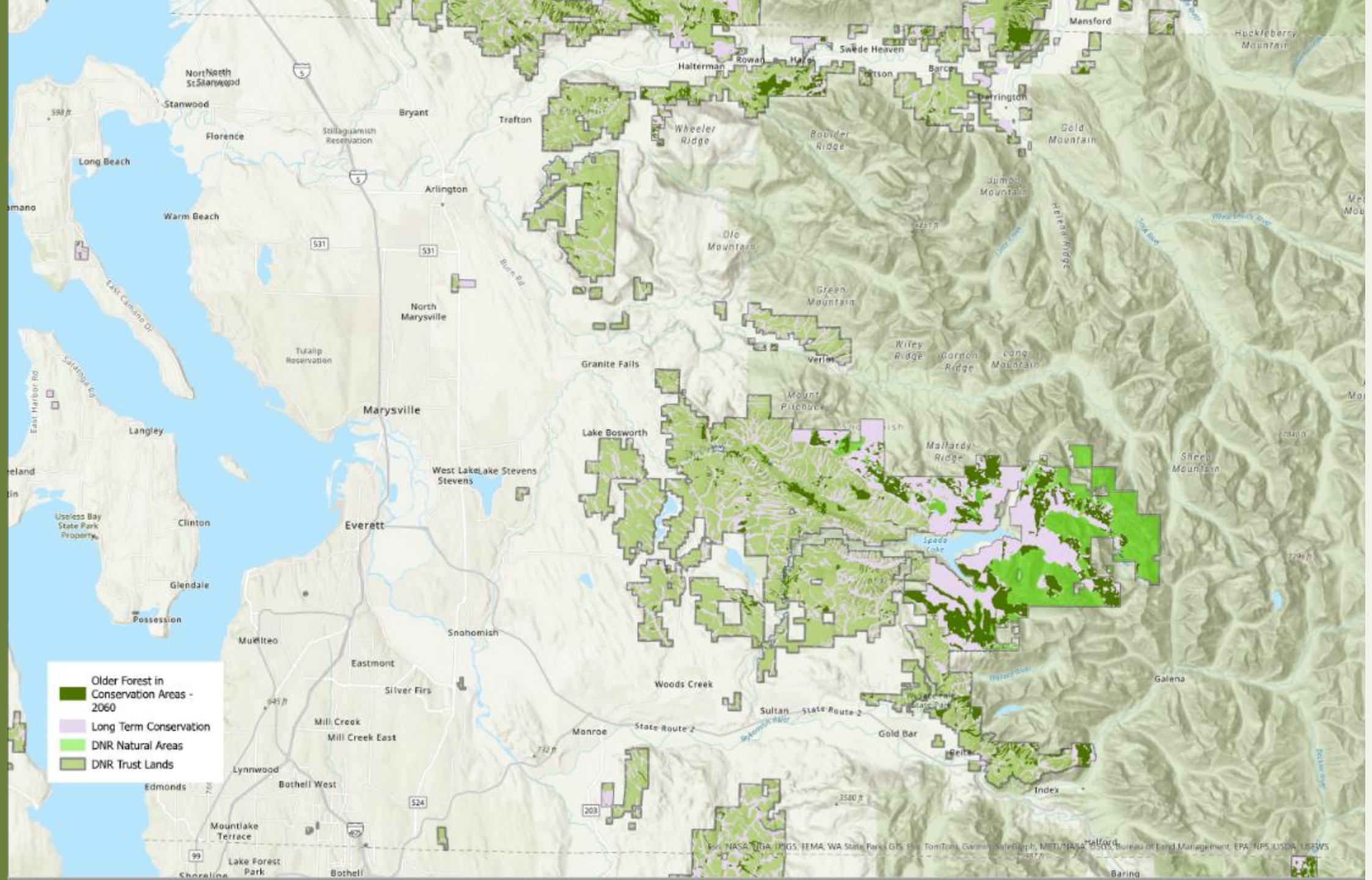


ESRI, NASA, NGA, USGS, FEMA, WA State Parks, GIS, Esri, TomTom, Garmin, GeoEye, METI, NASA, NOAA, Bureau of Land Management, EPA, NPS, USDA, USEWS

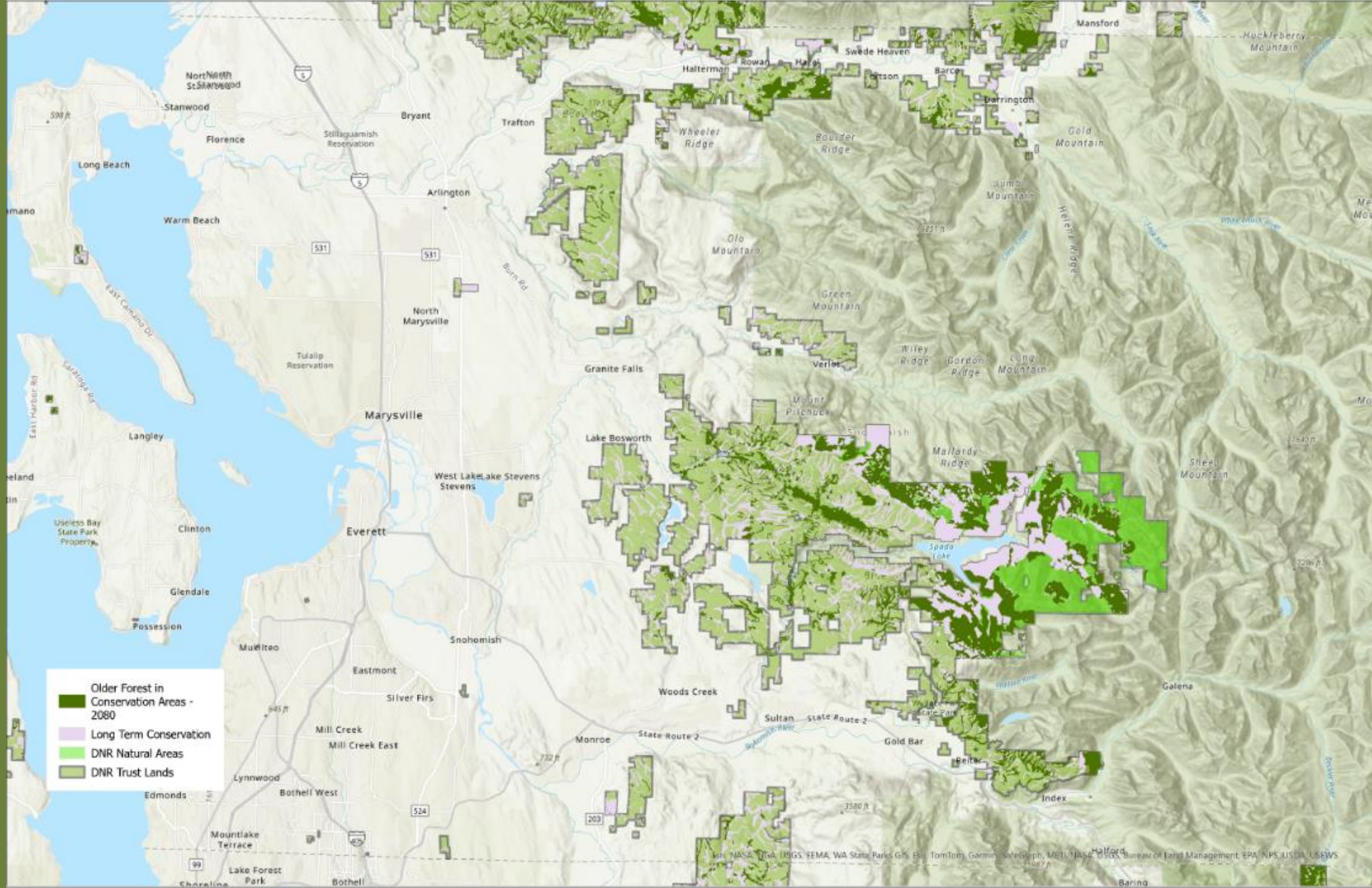


- Older Forest in Conservation Areas - 2040
- Long Term Conservation
- DNR Natural Areas
- DNR Trust Lands

Source: NASA, NOAA, USGS, FEMA, WA State Parks GIS, Esri, TomTom, Garmin, SafeGraph, METI, NASA, USGS, Bureau of Land Management, EPA, NPS, USFS, USGS



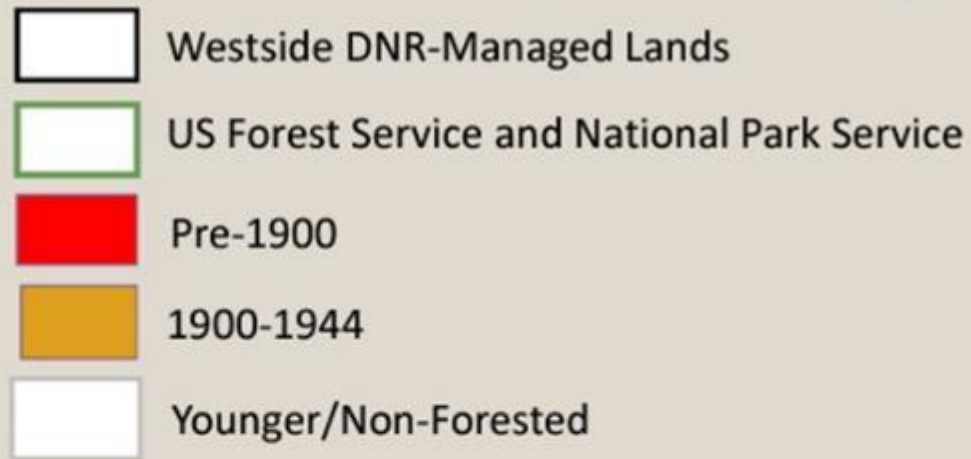
Map Data: NASA, NOAA, USGS, FEMA, WA State Parks, GIS, Esri, TomTom, Garmin, Google, MIT, NASA, USGS, Bureau of Land Management, EPA, NPS, USDA, USEWS





# Older Forest Stands in Western Washington

## Older Forest Stands in Western Washington

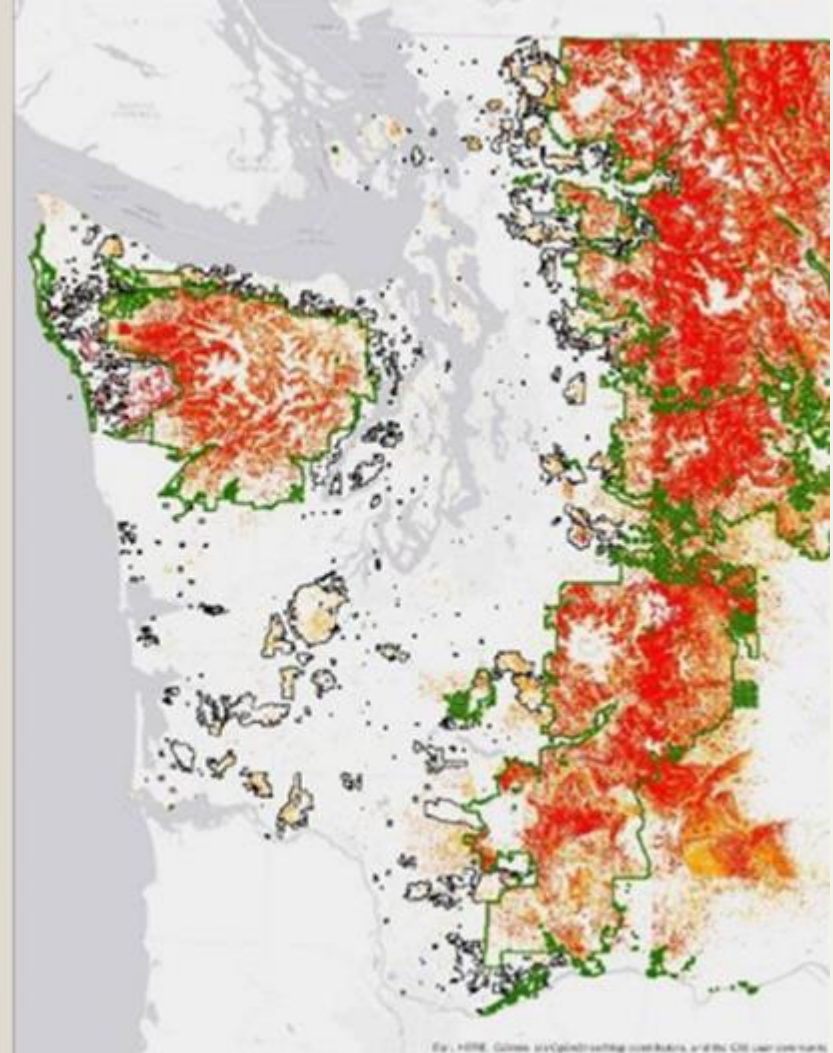


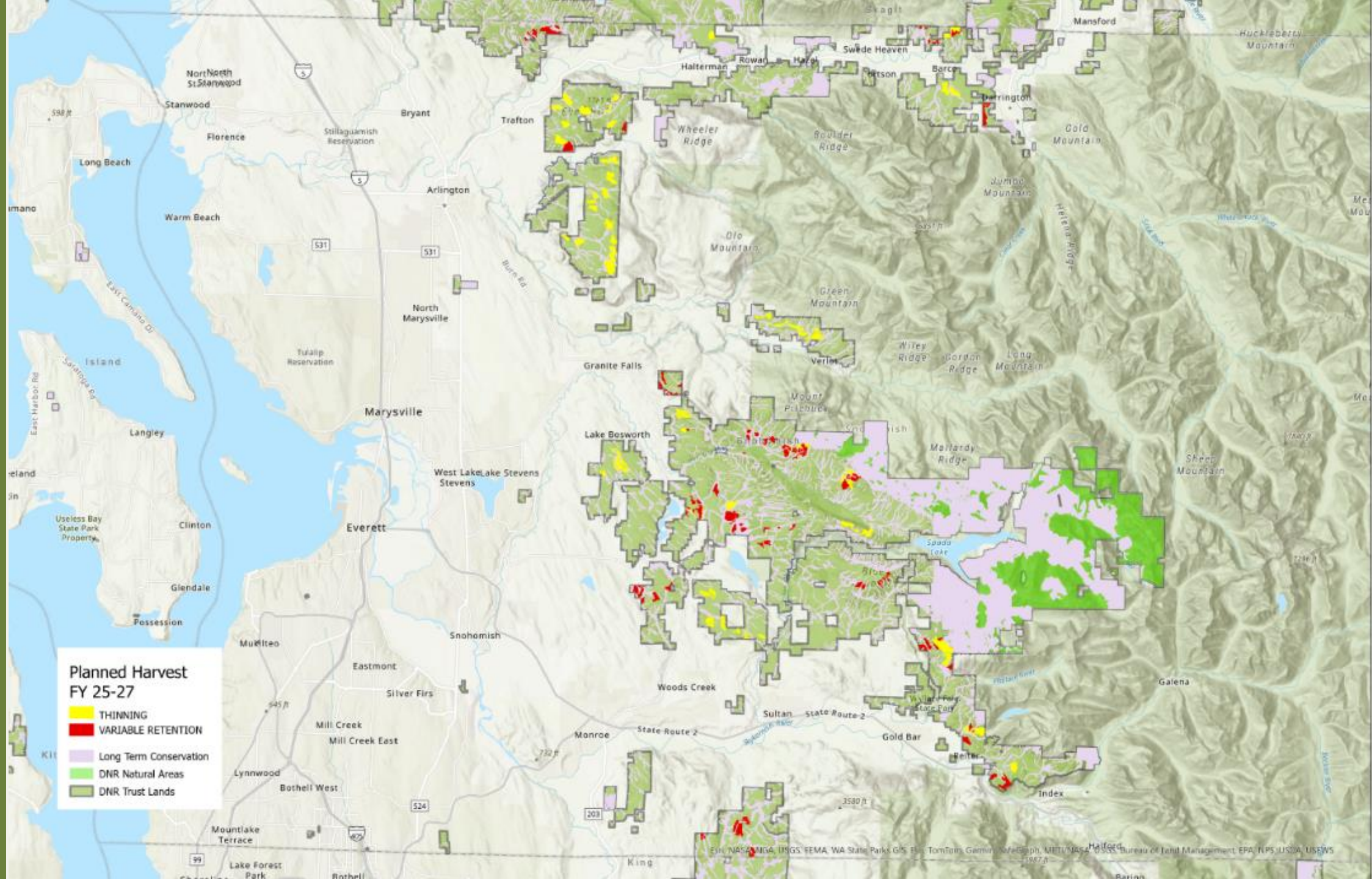
### Acre summary:

#### Age Groups

Manager	Pre 1900	1900-1944	Younger/ Non-Forested	Total
DNR	72,587	139,800	1,365,464	1,577,851
USFS/NPS	1,877,630	1,080,899	2,534,143	5,492,671
<b>Total</b>	<b>1,950,217</b>	<b>1,220,699</b>	<b>3,899,607</b>	<b>7,070,522</b>

\*Acres represented are for Western Washington







# Age is Relative

All Sales on All Trusts - Snohomish County				
Sale Name	Fiscal Year	Average Stand Age	Acres	
SMALL FRY SWT	2025	36	320.9	
CHAGA THIN	2027	36	72.4	
PITTER PATTER	2026	36	293.5	
GREENDALE	2027	37	212.2	
HIGH HO SILVER	2026	39	179.3	
SYNDROME SWT	2025	40	314.4	
CRANE THIN SWT	2025	41	17.1	
BLACK PEARL SWT	2025	42	515.5	
SCUTARIUS SWT	2026	43	138.8	
STREUSEL SWT	2026	46	471.5	
EYE BOLT	2026	50	94.8	
TENDER SHOOTS THIN	2027	51	271.6	
BLUFFIN	2025	53	218.7	
COUGAR	2025	56	159.1	
WAY SHE GOES	2027	57	273.9	
TOP NOTCH	2026	59	143.4	
CLUTCH	2025	61	154.0	
PEQUOD	2025	62	182.7	
NEXT REGENERATION	2026	63	86.4	
ECHO EXPLORER	2026	64	245.9	
EL DUDERINO	2025	64	107.8	
BAAAM	2027	65	96.7	
SEGELSON PICKUP VRH VDT	2027	65	161.3	
VW	2025	69	85.6	
KIELBASA	2027	69	90.8	
PULSE	2027	71	119.0	
SOUP BONES	2027	72	154.5	
BOLOGNA WRAP	2025	75	4.8	
LOW RIDER	2027	76	193.9	
FRAILEY SURE	2026	77	19.7	
EAST MAY	2026	84	196.3	
TUCKERED OUT	2025	84	49.2	
CRESCENDO	2027	110	51.3	
<b>Grand Total</b>		<b>61</b>	<b>5697</b>	

# Age is Relative

All Sales on All Trusts - By Unit in Snohomish County				
Sale Name	Fiscal Year	Average Stand Age	Acres	
<b>BAAAM</b>	<b>2027</b>	<b>65</b>	<b>96.7</b>	
BAAAM 1	2027	62	55.2	
BAAAM 2	2027	67	22.7	
BAAAM 3	2027	66	18.8	
<b>BLACK PEARL SWT</b>	<b>2025</b>	<b>42</b>	<b>515.5</b>	
BLACK PEARL SWT U1	2025	38	132.4	
BLACK PEARL SWT U2	2025	41	60.5	
BLACK PEARL SWT U3	2025	41	28.5	
BLACK PEARL SWT U4	2025	40	54.4	
BLACK PEARL SWT U5	2025	43	75.2	
BLACK PEARL SWT U6	2025	60	3.5	
BLACK PEARL SWT U7	2025	42	62.8	
BLACK PEARL SWT U8	2025	38	98.2	
<b>BLUFFIN</b>	<b>2025</b>	<b>53</b>	<b>218.7</b>	
BLUFFIN U1	2025	46	42.7	
BLUFFIN U2	2025	48	37.7	
BLUFFIN U3	2025	56	84.6	
BLUFFIN U4	2025	53	52.8	
BLUFFIN U5	2025	31	0.8	
BLUFFIN U6	2025	85	0.2	
<b>BOLOGNA WRAP</b>	<b>2025</b>	<b>75</b>	<b>4.8</b>	
BOLOGNA 5A	2025	75	4.8	
<b>CHAGA THIN</b>	<b>2027</b>	<b>36</b>	<b>72.4</b>	
CHAGA THIN U3	2027	36	72.4	
<b>CLUTCH</b>	<b>2025</b>	<b>61</b>	<b>154.0</b>	
CLUTCH ROW	2025	62	8.3	
CLUTCH U1	2025	58	38.7	
CLUTCH U2	2025	60	30.9	
CLUTCH U2 RMZ	2025	61	8.1	
CLUTCH U3	2025	57	23.2	
CLUTCH U3 RMZ	2025	57	4.2	
CLUTCH U4	2025	66	39.4	
CLUTCH U4 RMZ	2025	65	1.3	

# State Forest Transfer Trust

Snohomish County Sales				
Sale Name	Fiscal Year	Average Stand Age	Acres	
SMALL FRY SWT	2025	36	320.9	
PITTER PATTER	2026	36	0.5	
HIGH HO SILVER	2026	39	179.3	
SYNDROME SWT	2025	40	279.8	
CRANE THIN SWT	2025	41	17.1	
SCUTARIUS SWT	2026	44	137.0	
BLACK PEARL SWT	2025	44	174.0	
STREUSEL SWT	2026	46	471.5	
EYE BOLT	2026	50	94.8	
TENDER SHOOTS THIN	2027	53	80.5	
BLUFFIN	2025	53	163.5	
COUGAR	2025	57	83.5	
TOP NOTCH	2026	59	14.1	
NEXT REGENERATION	2026	63	82.7	
ECHO EXPLORER	2026	64	12.8	
PEQUOD	2025	65	102.3	
SEGELSON PICKUP VRH VDT	2027	68	77.1	
VW	2025	68	9.8	
KIELBASA	2027	69	69.2	
PULSE	2027	71	119.0	
BOLOGNA WRAP	2025	75	0.1	
FRAILEY SURE	2026	77	19.7	
LOW RIDER	2027	80	67.5	
EAST MAY	2026	84	125.2	
TUCKERED OUT	2025	89	22.4	
CRESCENDO	2027	110	51.3	
<b>Grand Total</b>	<b>2025</b>	<b>55</b>	<b>2,775.8</b>	

**“In Washington, the most innovative large forest management organization is the Department of Natural Resources. Their management today is so profoundly different from 30 years ago as to defy belief.” – Dr. Jerry Franklin UW Professor of Ecological Forestry**

**Private Working Forest**

---

**DNR Managed Lands**

