

Siemens Industry, Inc.

Date: August 4, 2021

To: Lolly Huggins

RE: Snohomish County Courthouse – 2nd FLR Lactation [2101]

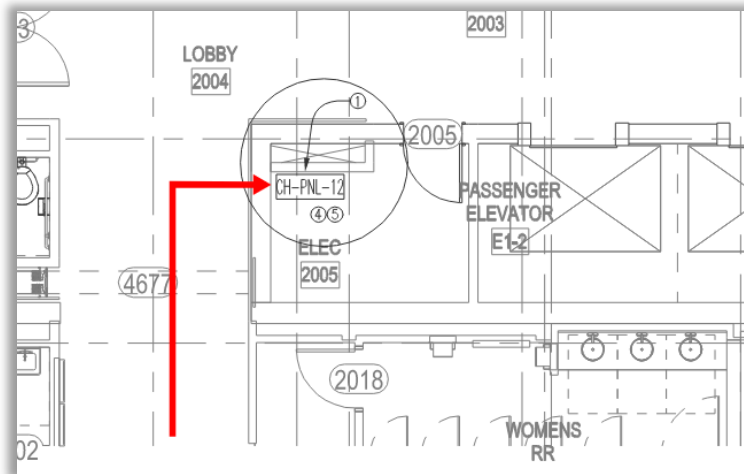
SOLUTIONS OVERVIEW

Siemens Industry, Inc. (SI) is pleased to provide the following proposal for the above referenced project. This quote is based upon the installation of new readers requested by Snohomish County for the Siemens Project ID: 44OP-240571 Courthouse Security. This request will be an add to the existing base contract.

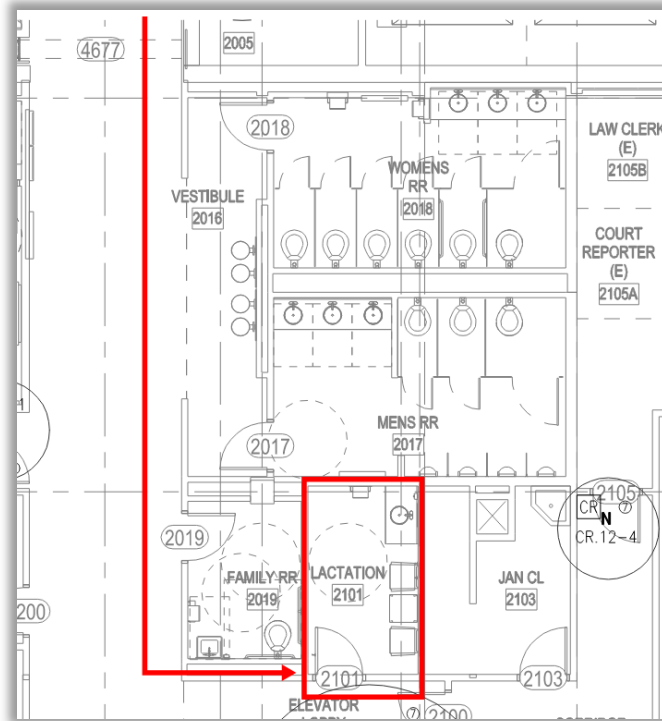
Siemens has been requested to provide proposal to add new security access control to the 2nd Flr Lactation Room located on the 2nd floor of the RJC. Siemens will provide and install composite cable to the 2nd floor security enclosure [CH-PNL-12].

Siemens will provide the following material and services:

- Access Control – New Location
 - Provide new Multiclass Card Reader
 - Provide new Request to Exit
 - Provided new Door Position Sensor
 - Electric Strike
 - Field device and panel terminations by Siemens
- Software configurations
- Start-Up & Commissioning



Siemens Industry, Inc.



CLARIFICATIONS

1. Pricing includes project management for the duration of the project schedule.
2. Pricing includes one (1) year warranty on materials and workmanship.
3. Materials pricing is for the extent of the project schedule.

EXCLUSIONS

1. Cutting, painting, and patching.
2. Server, workstations, and software licensing.
3. Scope of work outside the above-mentioned specification systems.
4. Sales Tax
5. Cable/Wire, labeling of any wire, cable installation and/or patch cords.
6. Access Cards.
7. Provision or installation of wire, fiber, electrical distribution components, conduit, and boxes.
8. Network connectivity, provided by others
9. All cabling and conduit throughout project
10. Dedicated Telephone lines or monitoring services for systems listed above.
11. Fire Alarm system interface, if required.
12. All lock hardware, and electrified lock hardware to be provided by others.
13. 120VAC connections and supply to be done by others as required.
14. Performance or Payment bonds.
15. Costs associated with schedule acceleration, project meetings, multiple trips onsite due to incompleteness of others, or multiple unplanned phases.
16. Gates, motors, and ground loop devices, to be provided by others.

