

CHANGE ORDER

**CHANGE ORDER
NUMBER**

10

4/7/2025

Page 1 of 6

<input checked="" type="checkbox"/> ORDERED BY ENGINEER UNDER SECTION 1-04.4 OF THE STANDARD SPECIFICATIONS. <input type="checkbox"/> CHANGE PROPOSED BY CONTRACTOR	PROJECT IDENTIFICATION PROJECT NAME: 36 th Avenue W & 35 th Avenue W, 164 th St SW to SR 99 PROJECT NUMBER: RC1783, RC1784, RR6337, RR6342, UPI 06-0014 Fed Aid #: STBGUL-2585(001)
CONTRACTOR ENDORSEMENT:	CONTRACTOR: Marshbank Construction, Inc.
<div style="display: flex; justify-content: space-between;"> <div>SIGNATURE</div> <div>DATE</div> </div>	ADDRESS: PO Box 97 3304 Old Hartford Rd Lake Stevens, WA 98258
<div style="text-align: center;">TITLE</div>	

In consideration of Section 1-04.4 of the Standard Specification, make the following revisions to the contract:

Description

This Change Order compensates the Contractor for removing and replacing existing storm drainage pipe runs and catch basins from Station 88+00 to 94+00 and as identified on revised plan sheets DR03 through DR05. Prior to removal, the Contractor shall record existing rim and invert at existing catch basins and reinstall the new storm drainage to match the existing invert elevations and pipe run slopes.

Removing Drainage Structure and Removing Existing Pipe includes the removal and disposal of catch basins and storm drain pipes where new catch basins and pipes are shown on the revised plan sheets DR03 through DR05, or where designated by the Engineer.

RC1783, Group 1

Increase item #9 "Gravel Borrow" in the amount of 380 tons.

Increase item #15 "Catch Basin Type 1" in the amount of 1 each.

Increase item #24 "Connect to Existing Drainage Pipe" in the amount of 4 each.

Increase item #62 "Crushed Surfacing Base Course" in the amount of 110 tons.

Increase item #116 "Flaggers" in the amount of 80 hours.

Increase item #157 "Connection to Drainage Structure" in the amount of 3 each.

Increase item #158 "Minor Field Changes" in the amount of \$12,000 est.

Increase item #176 "Class II Disposal Premium Type B" in the amount of 600 tons.

Add item #190 "Corrugated Polyethylene Storm Sewer Pipe 12 In. Diam." in the amount of 69 linear feet.

Add item #191 "Corrugated Polyethylene Storm Sewer Pipe 18 In. Diam." in the amount of 461 linear feet.

ORIGINAL CONTRACT AMOUNT	CURRENT CONTRACT AMOUNT	ESTIMATED NET CHANGE THIS ORDER	ESTIMATED CONTRACT TOTAL AFTER CHANGE
\$9,890,354.21	\$10,649,653.67	\$321,348.54	\$10,971,002.21
APPROVAL RECOMMENDED		OTHER APPROVAL RECOMMENDED	
CONSTRUCTION MANAGER	DATE	SIGNATURE / REPRESENTING	DATE
APPROVAL RECOMMENDED		APPROVED	
ENGINEERING SERVICES DIRECTOR	DATE	PUBLIC WORKS DIRECTOR OR COUNTY ENGINEER	DATE

CHANGE ORDER

CHANGE ORDER
NUMBER

10

4/7/2025

Page 2 of 6

Add item #192 "Ductile Iron Storm Sewer Pipe 18 In. Diam." in the amount of 69 linear feet.

Add item #193 "Removing Drainage Structure" in the amount of 4 each.

Add item #194 "Removing Existing Pipe" in the amount of 599 linear feet.

Add item #195 "Catch Basin Type 1L" in the amount of 4 each.

RC1784, Group 2

Increase item #9 "Gravel Borrow" in the amount of 100 tons.

Increase item #15 "Catch Basin Type 1" in the amount of 5 each.

Increase item #20 "Ductile Iron Storm Sewer Pipe, 12 In. Diam." in the amount of 260 linear feet.

Increase item #24 "Connect to Existing Drainage Pipe" in the amount of 2 each.

Increase item #62 "Crushed Surfacing Base Course" in the amount of 30 tons.

Increase item #116 "Flaggers" in the amount of 30 hours.

Increase item #157 "Connection to Drainage Structure" in the amount of 1 each.

Increase item #158 "Minor Field Changes" in the amount of \$10,000 est.

Increase item #176 "Class II Disposal Premium Type B" in the amount of 200 tons.

Add item #190 "Corrugated Polyethylene Storm Sewer Pipe 12 In. Diam." in the amount of 100 linear feet.

Add item #192 "Ductile Iron Storm Sewer Pipe 18 In. Diam." in the amount of 50 linear feet.

Add item #193 "Removing Drainage Structure" in the amount of 6 each.

Add item #194 "Removing Existing Pipe" in the amount of 410 linear feet.

Add item #195 "Catch Basin Type 1L" in the amount of 1 each.

Measurement

Corrugated Polyethylene Storm Sewer Pipe 12 In. Diam will be measured per the linear foot of pipe installed.

Ductile Iron Storm Sewer Pipe 18 In. Diam. will be measured per the linear foot of pipe installed.

Removing Drainage Structure will be measured per each drainage structure removed and disposed.

Removing Existing Pipe will be measured per linear foot of pipe removed and disposed.

Catch Basin Type 1L will be measured per each.

Existing contract items shall be measured in accordance with the existing contract.


Payment

Item 190 "Corrugated Polyethylene Storm Sewer Pipe 12 In. Diam" shall be paid at the mutually agreed price of \$110.00 per linear foot.

Item 191 "Corrugated Polyethylene Storm Sewer Pipe 18 In. Diam" shall be paid at the mutually agreed price of \$165.00 per linear foot.

Item 192 "Ductile Iron Storm Sewer Pipe 18 In. Diam." shall be paid at the mutually agreed price of \$335.66 per linear foot.

Item 193 "Removing Drainage Structure" shall be paid at the mutually agreed price of \$775.00 per each and shall be full compensation for all labor, materials, tools, and equipment necessary to complete the work as specified including excavation, backfill, compaction, haul and disposal of the existing structure.

 SNOHOMISH COUNTY DEPARTMENT OF PUBLIC WORKS	<h2 style="margin: 0;">CHANGE ORDER</h2>	CHANGE ORDER NUMBER
		10
		4/7/2025
		Page 3 of 6

Item 194 “Removing Existing Pipe” shall be paid at the mutually agreed price of \$20.00 per linear foot and shall be full compensation for all labor, materials, tools, and equipment necessary to complete the work as specified including excavation, cutting if required, backfill, compaction, haul and disposal of the existing pipe.


Item 195 “Catch Basin Type 1L” shall be paid at the mutually agreed price of \$2500.00 per each.

Existing contract items shall be paid in accordance with the existing contract except for the following:

Bid Item 158 “Minor Field Changes” will be used to compensate the Contractor in accordance with Section 1-09.6 for a Vactor Truck and Operator when used to assist in excavating the drainage structures. The associated travel times and dump fees will be included with the force account payments.

Contract Time

No working days will be added to the Contract Time with this Change Order. Upon evaluation of the project schedule, additional working days will be considered and may be added in a future change order.

 SNOHOMISH COUNTY DEPARTMENT OF PUBLIC WORKS		CHANGE ORDER ESTIMATE			CHANGE ORDER NUMBER	
					10	
					4/7/2025	
					Page 1 of 1	
PROJECT NAME:		36 th Avenue W & 35 th Avenue W, 164 th St SW to SR 99			PROJECT NUMBER: RC1783, RC1784, RR6337, RR6342	
PROJECT ENGINEER:		Todd Nielsen			FED AID NUMBER: STBGUL-2585(001)	
ITEM NO.	GROUP NO.	Item Description	UNIT MEAS.	UNIT PRICE	EST. QUANTITY	EST. CHANGE
9	1	GRAVEL BORROW INCL. HAUL	TON	\$24.00	380	\$9,120.00
15	1	CATCH BASIN TYPE 1	EACH	\$1,600.00	1	\$1,600.00
20	1	DUCTILE IRON STORM SEWER PIPE, 12 IN. DIAM.	L.F.	\$200.00	0	\$0.00
24	1	CONNECT TO EXISTING DRAINAGE PIPE	EACH	\$1,500.00	4	\$6,000.00
62	1	CRUSHED SURFACING BASE COURSE	TON	\$40.00	110	\$4,400.00
116	1	FLAGGERS	HR	\$60.00	80	\$4,800.00
157	1	CONNECTION TO DRAINAGE STRUCTURE	EACH	\$1,200.00	3	\$3,600.00
158	1	MINOR FIELD CHANGES	EST.	\$1.00	12000	\$12,000.00
176	1	CLASS II DISPOSAL PREMIUM TYPE B	TON	\$31.50	600	\$18,900.00
190	1	CORRUGATED POLYETHYLENE STORM SEWER PIPE 12 IN. DIAM.	L.F.	\$110.00	69	\$7,590.00
191	1	CORRUGATED POLYETHYLENE STORM SEWER PIPE 18 IN. DIAM.	L.F.	\$165.00	461	\$76,065.00
192	1	DUCTILE IRON STORM SEWER PIPE, 18 IN. DIAM.	L.F.	\$335.66	69	\$23,160.54
193	1	REMOVING DRAINAGE STRUCTURE	EACH	\$775.00	4	\$3,100.00
194	1	REMOVING EXISTING PIPE	L.F.	\$20.00	599	\$11,980.00
195	1	CATCH BASIN TYPE 1L	EACH	\$2,500.00	4	\$10,000.00
		GROUP 1 SUBTOTAL				\$192,315.54
9	2	GRAVEL BORROW INCL. HAUL	TON	\$24.00	100	\$2,400.00
15	2	CATCH BASIN TYPE 1	EACH	\$1,600.00	5	\$8,000.00
20	2	DUCTILE IRON STORM SEWER PIPE, 12 IN. DIAM.	L.F.	\$200.00	260	\$52,000.00
24	2	CONNECT TO EXISTING DRAINAGE PIPE	EACH	\$1,500.00	2	\$3,000.00
62	2	CRUSHED SURFACING BASE COURSE	TON	\$40.00	30	\$1,200.00
116	2	FLAGGERS	HR	\$60.00	30	\$1,800.00
157	2	CONNECTION TO DRAINAGE STRUCTURE	EACH	\$1,200.00	1	\$1,200.00
158	2	MINOR FIELD CHANGES	EST.	\$1.00	10000	\$10,000.00
176	2	CLASS II DISPOSAL PREMIUM TYPE B	TON	\$31.50	200	\$6,300.00
190	2	CORRUGATED POLYETHYLENE STORM SEWER PIPE 12 IN. DIAM.	L.F.	\$110.00	100	\$11,000.00
191	2	CORRUGATED POLYETHYLENE STORM SEWER PIPE 18 IN. DIAM.	L.F.	\$165.00	0	\$0.00
192	2	DUCTILE IRON STORM SEWER PIPE, 18 IN. DIAM.	L.F.	\$335.66	50	\$16,783.00
193	2	REMOVING DRAINAGE STRUCTURE	EACH	\$775.00	6	\$4,650.00
194	2	REMOVING EXISTING PIPE	L.F.	\$20.00	410	\$8,200.00
195	2	CATCH BASIN TYPE 1L	EACH	\$2,500.00	1	\$2,500.00
		GROUP 2 SUBTOTAL				\$129,033.00
		TOTAL				\$321,348.54

Existing GREEN LINE = 12" CMP

Existing BLUE LINE = 18" CMP

Ductile
Replacement

= Replace - Existing Type 1 CB

= Replace - Existing Type 1L CB

MAINTAIN EXISTING
ELEVATIONS FOR
REPLACEMENT PIPE
AND STRUCTURES

SECTION 3, T. 27 N, R. 4 E., W.M.

DRAINAGE NOTES

- 1 CONSTRUCT CATCH BASIN TYPE 1 PER WSDOT STD. PLAN B-05.20.
- 2 CONSTRUCT CATCH BASIN TYPE 2 48 IN. DIAM. PER WSDOT STD. PLAN B-10.20.
- 3 CONSTRUCT CATCH BASIN TYPE 2 72 IN. DIAM. WITH FLOW CONTROL STRUCTURE PER SNOHOMISH COUNTY EDDS STD. DWG. 5-120, 5-270A, 5-270B AND 5-275. SEE SHEET DD01 FOR ADDITIONAL DETAIL FOR FLOW CONTROL STRUCTURE.
- 4 INSTALL RECTANGULAR SOLID METAL COVER PER WSDOT STD. PLAN B-30.20.
- 5 INSTALL SOLID ROUND LID PER SNOHOMISH COUNTY EDDS STD. DWG. 5-230.
- 6 INSTALL RECTANGULAR VANED GRATE PER WSDOT STD. PLAN B-30.30.
- 7 CONSTRUCT CONCRETE INLET PER WSDOT STD. PLAN B-25.60.
- 8 CONSTRUCT SOLID WALL PVC STORM SEWER PIPE 12 IN. DIAM. PIPE ZONE BEDDING AND BACKFILL PER WSDOT STD. PLAN B-55.20.
- 9 CONSTRUCT SOLID WALL PVC STORM SEWER PIPE 18 IN. DIAM. PIPE ZONE BEDDING AND BACKFILL PER WSDOT STD. PLAN B-55.20.
- 10 CONNECT TO EXISTING DRAINAGE PIPE.
- 11 CONNECT TO DRAINAGE STRUCTURE.
- 12 CONSTRUCT BIORETENTION WATER QUALITY VAULT PER DETAIL ON SHEET DD03.
- 13 CONSTRUCT CATCH BASIN TYPE 2 54 IN. DIAM. WITH DEBRIS CAGE PER WSDOT STD. PLAN B-10.20 AND SNOHOMISH COUNTY EDDS STD. DWG. 5-245.
- 14 CONSTRUCT DETENTION POND PER DETAIL ON SHEET DD01.
- 15 ADJUST CATCH BASIN TO GRADE.
- 16 ROTATE LID TO PLACE GRATE IN GUTTER LINE.
- 17 CONSTRUCT 6 IN. DIAM. CLEANOUT PER WSDOT STD. PLAN B-85.40. CLEANOUT DETAIL TO SUBSTITUTE 8 IN. DIAM. PIPE WITH 6 IN. DIAM. PIPE.
- 18 CONSTRUCT DRAIN PIPE 6 IN. DIAM. PIPE ZONE BEDDING AND BACKFILL PER WSDOT STD. PLAN B-55.20.
- 19 REMOVE EXISTING DRAINAGE PIPE.
- 20 REMOVE DRAINAGE STRUCTURE.
- 21 INSTALL DEBRIS BARRIER PER SNOHOMISH COUNTY EDDS STD. DWG. 5-090.
- 22 CONSTRUCT BEVELED END SECTIONS PER WSDOT STD. PLAN B-70.20.
- 23 CONSTRUCT STORM PIPE INLET/OUTFALL PROTECTION PER DETAIL ON SHEET DD02.
- 24 CONNECT PROPOSED STORM DRAIN PIPE TO EXISTING STORM DRAIN PIPE PER WSDOT STD. PLAN B-60.20.
- 25 CONSTRUCT DUCTILE IRON STORM SEWER PIPE 12 IN. DIAM. PIPE ZONE BEDDING AND BACKFILL PER WSDOT STD. PLAN B-55.20.
- 26 CONSTRUCT CATCH BASIN TYPE 2 54 IN. DIAM. PER WSDOT STD. PLAN B-10.20.
- 27 CONTRACTOR TO FIELD VERIFY INVERT ELEVATION.
- 28 CONSTRUCT CATCH BASIN TYPE 2 72 IN. DIAM. PER WSDOT STD. PLAN B-10.20.

GENERAL NOTES

1. SEE DRAINAGE PROFILE SHEETS SD01-SD06 FOR ADDITIONAL DRAINAGE STRUCTURE AND PIPE INFORMATION.
2. ALL DRAINAGE STRUCTURES ARE LOCATED BY STATION AND OFFSET OF CENTER OF STRUCTURE. CONTRACTOR TO ADJUST STRUCTURES TO FINAL GRADE.
3. IT SHALL BE THE CONTRACTOR'S RESPONSIBILITY TO ENSURE THAT NO CONFLICTS EXIST BETWEEN STORM DRAINAGE FACILITIES AND PROPOSED OR EXISTING UTILITIES PRIOR TO CONSTRUCTION.
4. SEE SPECIAL PROVISIONS FOR POTHOLE DATA.
5. WHERE THE VERTICAL DISTANCE BETWEEN UTILITIES IS LESS THAN 6-INCHES, THE CONTRACTOR SHALL PROVIDE AN O.D. X O.D. X 2.5 INCH ETHAFOAM PAD.
6. CENTERLINE TO CURB DIMENSIONS ARE TO FACE OF CURB.



MATCHLINE STA 72+00

MATCHLINE STA 76+50

MATCHLINE STA 80+50

Sep 01, 2023 - 3:01pm oxa P:\LL\YNN000001\3\0400CAD\TDDWG\Sheet\TDR001\YNN0013.dwg Layout Name: DR03

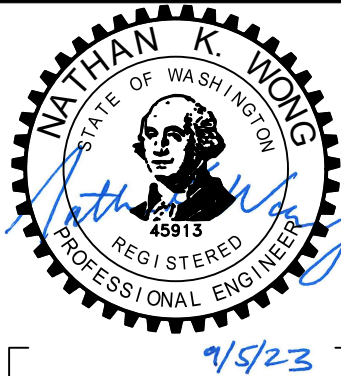
CHANGE ORDER #10
4/7/2025
Page 4 of 6



UPI NO.:
06-0014
SURVEY NO.:
SN4155
HORZ. DATUM:
PROJECT
DESIGNED BY:
N. WONG

FED. AID PROJ. NO.:
STBGUL 2585(001)
FIELD BOOK(S):

VERT. DATUM:
NAVD88
DRAWN BY:
O. AHRENSFELD



DAVID EVANS
AND ASSOCIATES INC.
14432 SE Eastgate Way, Suite 400
Bellevue Washington 98007
Phone: 425.519.6500

REVIEWED AND APPROVED
FOR CONSTRUCTION
Douglas W. McCormick
DOUGLAS W. MCCORMICK, PE
SNOHOMISH COUNTY ENGINEER
9/8/2023
DATE APPROVED:

SNOHOMISH COUNTY
DEPARTMENT OF
PUBLIC WORKS



FUNDING NO. RC1783, RC1784, RR6337, RR6342

36TH AVE W & 35TH AVE W
164TH ST. SW TO SR 99
STA 72+00 TO 80+50
DRAINAGE PLAN

REFERENCE
SHEET NO.
DR03
SHEET
72
OF
163
SHEETS

Existing GREEN LINE = 12" CMP

Existing BLUE LINE = 18" CMP

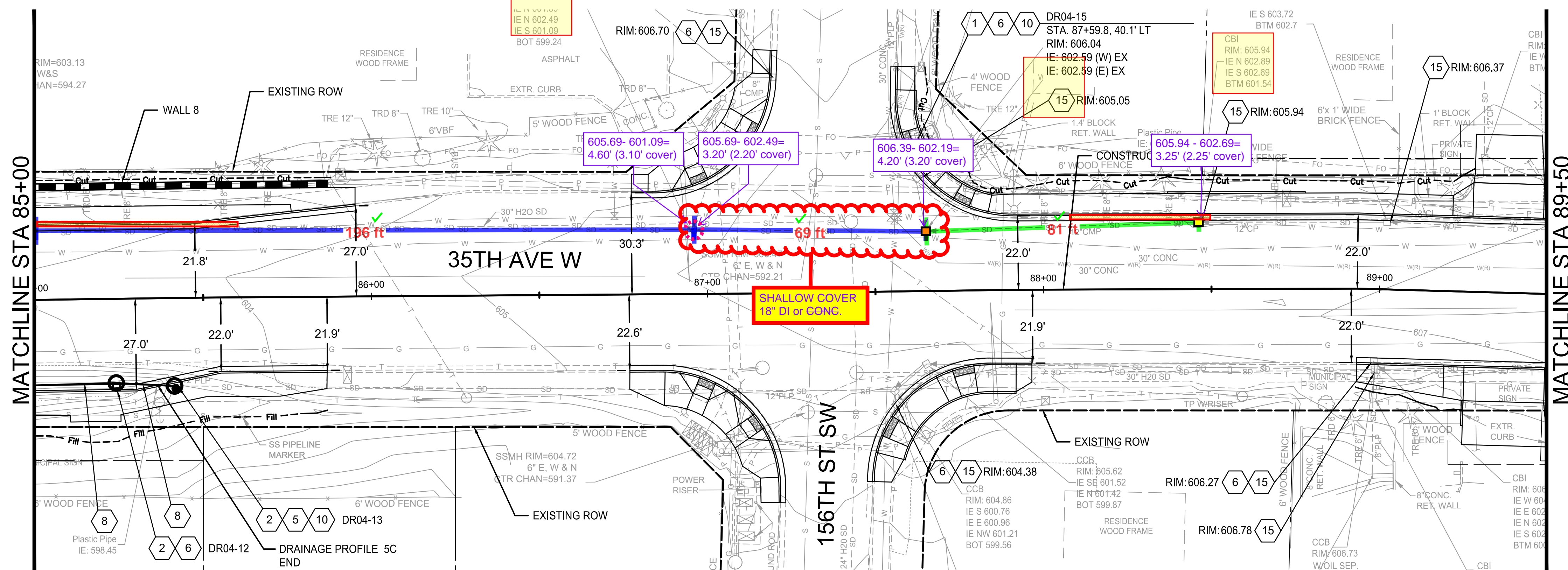
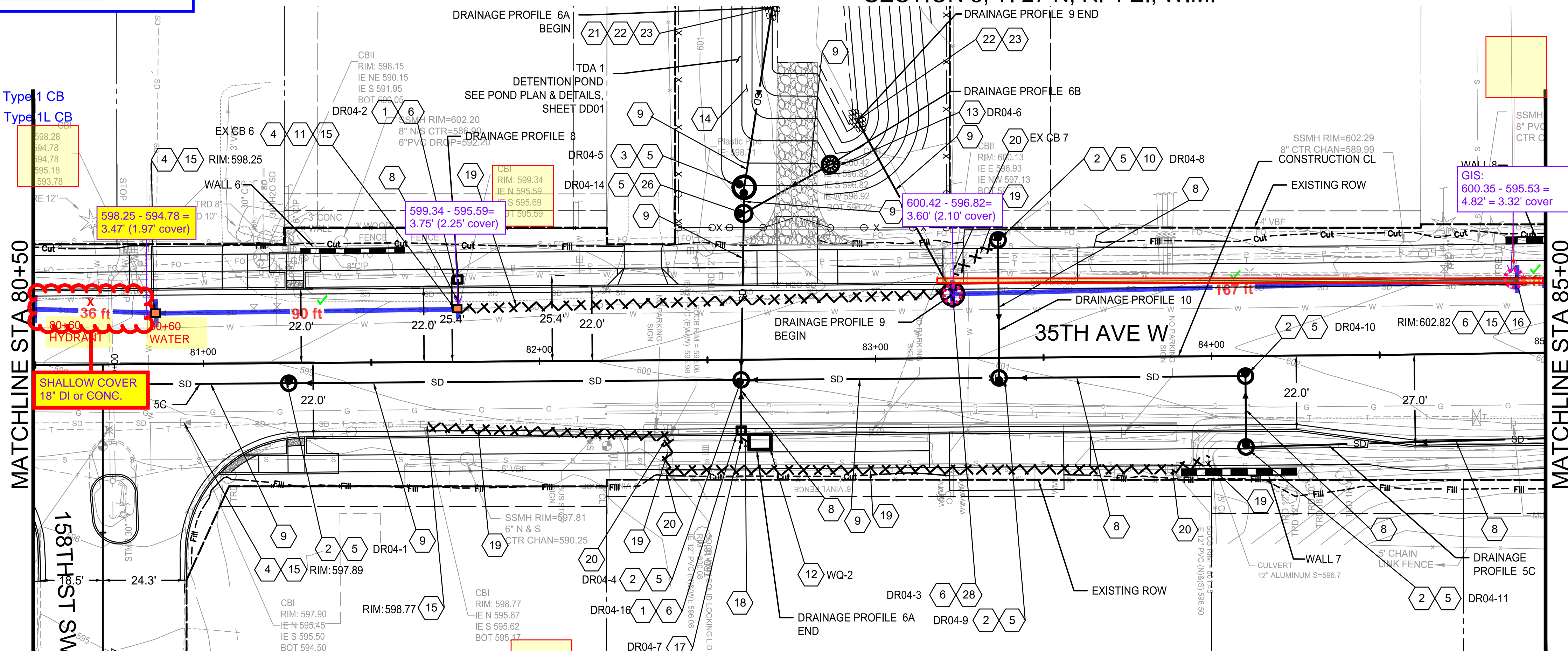
Ductile Replacement

= Replace - Existing Type 1 CB

= Replace - Existing Type 1L CB

MAINTAIN EXISTING ELEVATIONS FOR REPLACEMENT PIPE AND STRUCTURES

SECTION 3, T. 27 N, R. 4 E., W.M.

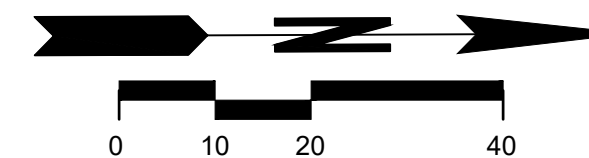


DRAINAGE NOTES

- 1 CONSTRUCT CATCH BASIN TYPE 1 PER WSDOT STD. PLAN B-05.20.
- 2 CONSTRUCT CATCH BASIN TYPE 2 48 IN. DIAM. PER WSDOT STD. PLAN B-10.20.
- 3 CONSTRUCT CATCH BASIN TYPE 2 72 IN. DIAM. WITH FLOW CONTROL STRUCTURE PER SNOHOMISH COUNTY EDDS STD. DWG. 5-120, 5-270A, 5-270B AND 5-275. SEE SHEET DD01 FOR ADDITIONAL DETAIL FOR FLOW CONTROL STRUCTURE.
- 4 INSTALL RECTANGULAR SOLID METAL COVER PER WSDOT STD. PLAN B-30.20.
- 5 INSTALL SOLID ROUND LID PER SNOHOMISH COUNTY EDDS STD. DWG. 5-230.
- 6 INSTALL RECTANGULAR VANED GRATE PER WSDOT STD. PLAN B-30.30.
- 7 CONSTRUCT CONCRETE INLET PER WSDOT STD. PLAN B-25.60.
- 8 CONSTRUCT SOLID WALL PVC STORM SEWER PIPE 12 IN. DIAM. PIPE ZONE BEDDING AND BACKFILL PER WSDOT STD. PLAN B-55.20.
- 9 CONSTRUCT SOLID WALL PVC STORM SEWER PIPE 18 IN. DIAM. PIPE ZONE BEDDING AND BACKFILL PER WSDOT STD. PLAN B-55.20.
- 10 CONNECT TO EXISTING DRAINAGE PIPE.
- 11 CONNECT TO DRAINAGE STRUCTURE.
- 12 CONSTRUCT BIORETENTION WATER QUALITY VAULT PER DETAIL ON SHEET DD03.
- 13 CONSTRUCT CATCH BASIN TYPE 2 54 IN. DIAM. WITH DEBRIS CAGE PER WSDOT STD. PLAN B-10.20 AND SNOHOMISH COUNTY EDDS STD. DWG. 5-245.
- 14 CONSTRUCT DETENTION POND PER DETAIL ON SHEET DD01.
- 15 ADJUST CATCH BASIN TO GRADE.
- 16 ROTATE LID TO PLACE GRATE IN GUTTER LINE.
- 17 CONSTRUCT 6 IN. DIAM. CLEANOUT PER WSDOT STD. PLAN B-85.40. CLEANOUT DETAIL TO SUBSTITUTE 8 IN. DIAM. PIPE WITH 6 IN. DIAM. PIPE.
- 18 CONSTRUCT DRAIN PIPE 6 IN. DIAM. PIPE ZONE BEDDING AND BACKFILL PER WSDOT STD. PLAN B-55.20.
- 19 REMOVE EXISTING DRAINAGE PIPE.
- 20 REMOVE DRAINAGE STRUCTURE.
- 21 INSTALL DEBRIS BARRIER PER SNOHOMISH COUNTY EDDS STD. DWG. 5-090.
- 22 CONSTRUCT BEVELED END SECTIONS PER WSDOT STD. PLAN B-70.20.
- 23 CONSTRUCT STORM PIPE INLET/OUTFALL PROTECTION PER DETAIL ON SHEET DD02.
- 24 CONNECT PROPOSED STORM DRAIN PIPE TO EXISTING STORM DRAIN PIPE PER WSDOT STD. PLAN B-60.20.
- 25 CONSTRUCT DUCTILE IRON STORM SEWER PIPE 12 IN. DIAM. PIPE ZONE BEDDING AND BACKFILL PER WSDOT STD. PLAN B-55.20.
- 26 CONSTRUCT CATCH BASIN TYPE 2 54 IN. DIAM. PER WSDOT STD. PLAN B-10.20.
- 27 CONTRACTOR TO FIELD VERIFY INVERT ELEVATION.
- 28 CONSTRUCT CATCH BASIN TYPE 2 72 IN. DIAM. PER WSDOT STD. PLAN B-10.20.

GENERAL NOTES

1. SEE DRAINAGE PROFILE SHEETS SD01-SD06 FOR ADDITIONAL DRAINAGE STRUCTURE AND PIPE INFORMATION.
2. ALL DRAINAGE STRUCTURES ARE LOCATED BY STATION AND OFFSET OF CENTER OF STRUCTURE. CONTRACTOR TO ADJUST STRUCTURES TO FINAL GRADE.
3. IT SHALL BE THE CONTRACTOR'S RESPONSIBILITY TO ENSURE THAT NO CONFLICTS EXIST BETWEEN STORM DRAINAGE FACILITIES AND PROPOSED OR EXISTING UTILITIES PRIOR TO CONSTRUCTION.
4. SEE SPECIAL PROVISIONS FOR POTHOLE DATA.
5. WHERE THE VERTICAL DISTANCE BETWEEN UTILITIES IS LESS THAN 6-INCHES, THE CONTRACTOR SHALL PROVIDE AN O.D. X O.D. X 2.5 INCH ETHAFOAM PAD.
6. CENTERLINE TO CURB DIMENSIONS ARE TO FACE OF CURB.



Sep 01, 2023 - 3:01pm oxa P:\LL\YNN000001\30400CAD\TIDW\G\Sheet\TIDR001\YNN0013.dwg Layout Name: DR04

CHANGE ORDER #10
4/7/2025
Page 5 of 6



UPI NO.:
06-0014
SURVEY NO.:
SN4155
HORZ. DATUM:
PROJECT
DESIGNED BY:
N. WONG

FED. AID PROJ. NO.:
STBGUL 2585(001)
FIELD BOOK(S):

VERT. DATUM:
NAVD88
DRAWN BY:
O. AHRENSFELD



DAVID EVANS
AND ASSOCIATES INC.
14432 SE Eastgate Way, Suite 400
Bellevue Washington 98007
Phone: 425.519.6500

REVIEWED AND APPROVED
FOR CONSTRUCTION

Douglas W. McCormick
DOUGLAS W. MCCORMICK, PE
SNOHOMISH COUNTY ENGINEER
9/8/2023
DATE APPROVED:

SNOHOMISH COUNTY
DEPARTMENT OF
PUBLIC WORKS



FUNDING
NO. RC1783, RC1784,
RR6337, RR6342

36TH AVE W & 35TH AVE W
164TH ST. SW TO SR 99
STA 80+50 TO 89+50
DRAINAGE PLAN

REFERENCE
SHEET NO.
DR04
SHEET
73
OF
163
SHEETS

Existing GREEN LINE = 12" CMP

Existing BLUE LINE = 18" CMP

Ductile Replacement

= Replace - Existing Type 1 CB
= Replace - Existing Type 11 CB

MAINTAIN EXISTING ELEVATIONS FOR REPLACEMENT PIPE AND STRUCTURES

SECTION 3, T. 27 N, R. 4 E., W.M.

DRAINAGE NOTES

- 1 CONSTRUCT CATCH BASIN TYPE 1 PER WSDOT STD. PLAN B-05.20.
- 2 CONSTRUCT CATCH BASIN TYPE 2 48 IN. DIAM. PER WSDOT STD. PLAN B-10.20.
- 3 CONSTRUCT CATCH BASIN TYPE 2 72 IN. DIAM. WITH FLOW CONTROL STRUCTURE PER SNOHOMISH COUNTY EDDS STD. DWG. 5-120, 5-270A, 5-270B AND 5-275. SEE SHEET DD01 FOR ADDITIONAL DETAIL FOR FLOW CONTROL STRUCTURE.
- 4 INSTALL RECTANGULAR SOLID METAL COVER PER WSDOT STD. PLAN B-30.20.
- 5 INSTALL SOLID ROUND LID PER SNOHOMISH COUNTY EDDS STD. DWG. 5-230.
- 6 INSTALL RECTANGULAR VANED GRATE PER WSDOT STD. PLAN B-30.30.
- 7 CONSTRUCT CONCRETE INLET PER WSDOT STD. PLAN B-25.60.
- 8 CONSTRUCT SOLID WALL PVC STORM SEWER PIPE 12 IN. DIAM. PIPE ZONE BEDDING AND BACKFILL PER WSDOT STD. PLAN B-55.20.
- 9 CONSTRUCT SOLID WALL PVC STORM SEWER PIPE 18 IN. DIAM. PIPE ZONE BEDDING AND BACKFILL PER WSDOT STD. PLAN B-55.20.
- 10 CONNECT TO EXISTING DRAINAGE PIPE.
- 11 CONNECT TO DRAINAGE STRUCTURE.
- 12 CONSTRUCT BIORETENTION WATER QUALITY VAULT PER DETAIL ON SHEET DD03.
- 13 CONSTRUCT CATCH BASIN TYPE 2 54 IN. DIAM. WITH DEBRIS CAGE PER WSDOT STD. PLAN B-10.20 AND SNOHOMISH COUNTY EDDS STD. DWG. 5-245.
- 14 CONSTRUCT DETENTION POND PER DETAIL ON SHEET DD01.
- 15 ADJUST CATCH BASIN TO GRADE.
- 16 ROTATE LID TO PLACE GRATE IN GUTTER LINE.
- 17 CONSTRUCT 6 IN. DIAM. CLEANOUT PER WSDOT STD. PLAN B-85.40. CLEANOUT DETAIL TO SUBSTITUTE 8 IN. DIAM. PIPE WITH 6 IN. DIAM. PIPE.
- 18 CONSTRUCT DRAIN PIPE 6 IN. DIAM. PIPE ZONE BEDDING AND BACKFILL PER WSDOT STD. PLAN B-55.20.
- 19 REMOVE EXISTING DRAINAGE PIPE.
- 20 REMOVE DRAINAGE STRUCTURE.
- 21 INSTALL DEBRIS BARRIER PER SNOHOMISH COUNTY EDDS STD. DWG. 5-090.
- 22 CONSTRUCT BEVELED END SECTIONS PER WSDOT STD. PLAN B-70.20.
- 23 CONSTRUCT STORM PIPE INLET/OUTFALL PROTECTION PER DETAIL ON SHEET DD02.
- 24 CONNECT PROPOSED STORM DRAIN PIPE TO EXISTING STORM DRAIN PIPE PER WSDOT STD. PLAN B-60.20.
- 25 CONSTRUCT DUCTILE IRON STORM SEWER PIPE 12 IN. DIAM. PIPE ZONE BEDDING AND BACKFILL PER WSDOT STD. PLAN B-55.20.
- 26 CONSTRUCT CATCH BASIN TYPE 2 54 IN. DIAM. PER WSDOT STD. PLAN B-10.20.
- 27 CONTRACTOR TO FIELD VERIFY INVERT ELEVATION.
- 28 CONSTRUCT CATCH BASIN TYPE 2 72 IN. DIAM. PER WSDOT STD. PLAN B-10.20.

GENERAL NOTES

1. SEE DRAINAGE PROFILE SHEETS SD01-SD06 FOR ADDITIONAL DRAINAGE STRUCTURE AND PIPE INFORMATION.
2. ALL DRAINAGE STRUCTURES ARE LOCATED BY STATION AND OFFSET OF CENTER OF STRUCTURE. CONTRACTOR TO ADJUST STRUCTURES TO FINAL GRADE.
3. IT SHALL BE THE CONTRACTOR'S RESPONSIBILITY TO ENSURE THAT NO CONFLICTS EXIST BETWEEN STORM DRAINAGE FACILITIES AND PROPOSED OR EXISTING UTILITIES PRIOR TO CONSTRUCTION.
4. SEE SPECIAL PROVISIONS FOR POTHOLE DATA.
5. WHERE THE VERTICAL DISTANCE BETWEEN UTILITIES IS LESS THAN 6-INCHES, THE CONTRACTOR SHALL PROVIDE AN O.D. X O.D. X 2.5 INCH ETHAFOAM PAD.
6. CENTERLINE TO CURB DIMENSIONS ARE TO FACE OF CURB.

