

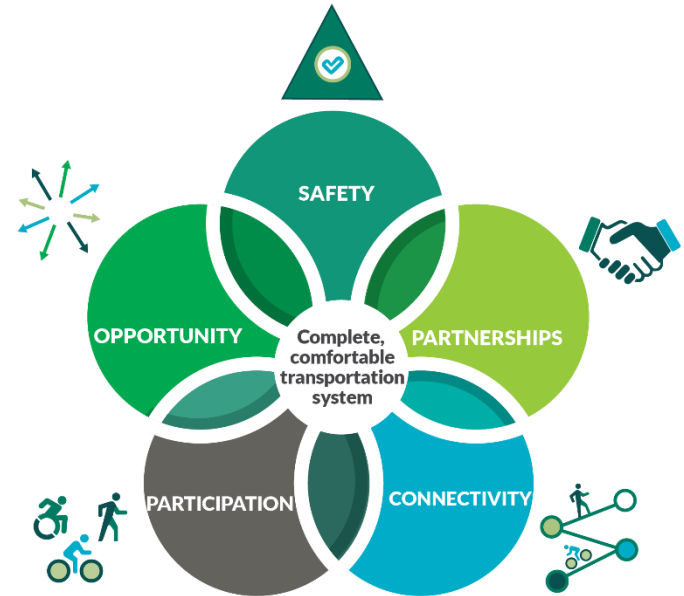


The Path Behind, The Path Ahead

Barb Chamberlain |
Director, Active Transportation Division, WSDOT
Snohomish County Public Works and Infrastructure Committee
May 3, 2022

Active Transportation Plan

- **Networks:** Connect comfortable and efficient walking and rolling networks so people can reach their destinations and other forms of transportation and have everyday access to physical activity.
- **Safety:** Eliminate deaths and serious injuries of people walking and rolling.
- **Opportunity:** Eliminate disparities in access to safe active transportation connections for people and communities most dependent on walking, bicycling and transit.
- **Participation:** Increase the percentage of everyday short trips made by walking or bicycling.
- **Partnership:** Collaborate with local, regional, state, tribal and federal partners to complete and improve the network across boundaries.



ATD's active portfolio

POLICY DEVELOPMENT

- [Active Transportation Plan](#): Detailed methodology, needs assessment, metrics
- [Washington State Injury Minimization and Speed Management Policy Elements and Implementation Recommendations](#)
- [Action Plan for Implementing Pedestrian Crossing Countermeasures at Uncontrolled Locations](#)
- And more: Land use policy, transportation-efficient communities, comprehensive plan guidance for climate change and resiliency, VMT reduction targets

PROGRAMS & PROJECTS

- [Safe Routes to School and Ped/Bike Program grants](#)
- [US Bicycle Route System](#)
- NEW in Move Ahead Washington:
 - Connecting Communities Pilot Program
 - Complete Streets design directive
 - School-based bike safety education
 - Prioritizing/tiering LEAP NL-2 community bike/ped projects

Active portfolio

TECHNICAL ASSISTANCE

- WSDOT projects: Ongoing role as subject matter experts
- Local projects: As backup for active transportation coordinators and local program engineers in our region offices
- Online resources
- Webinar archives for SRTS/PBP grants process: Review PDF of slides and watch/listen to the webinars

TRAINING

- May 11, 2-4pm, [FHWA Complete Streets primer](#)
- Complete Streets Leadership Academy that included [Arlington](#)
- Walkability Institute under way this week in Olympia
- How will you know what we're doing? [Subscribe to Walk + Roll!](#) If you're signed up for the WSDOT LTAP list you'll get some notices

Move Ahead Washington

- **More local projects:** Tripled [Safe Routes to School](#) + [Pedestrian/Bicyclist Program](#) (compared with 2020 baseline; includes funding from existing sources + new \$\$)
- **Connecting Communities pilot program:** 5-year, \$50M
- **Bigger, better statewide bike safety education:** Elementary grades through high school
- **[43 community pedestrian/bicyclist projects](#)** over 16 years: 3-tier list, prioritizing projects based on impacts to overburdened communities (+ we'll sync up with other activities for efficient delivery)
- **Complete Streets design directive on state routes:** All WSDOT projects \$500K or more that go into design from July 1, 2022

SRTS/PBP Overview

SRTS

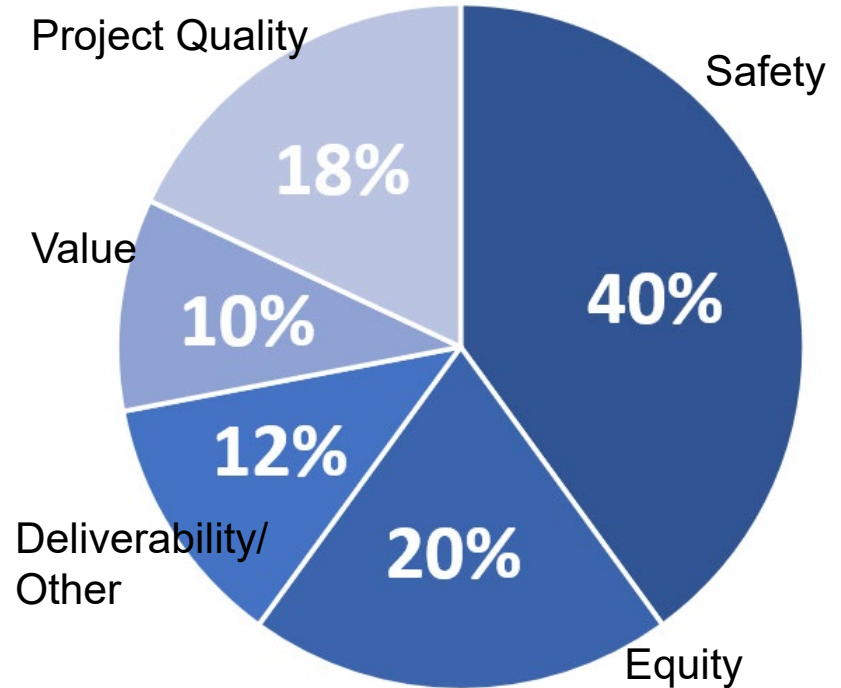
- Three types of eligible projects:
 - Construction projects within two miles of a school
 - Development/design-only projects
 - Education and encouragement only
- \$59 million expected funding level (federal + state)
- [Deadline](#): June 6, 2022

PBP

- Two types of eligible projects:
 - Construction projects
 - Development/design-only projects
- \$56.7 million expected funding level (state funds only)
- [Deadline](#): May 30, 2022

SRTS/PBP Process

- Deadlines: PBP May 31, SRTS June 6
- Internal review based on criteria
- Evaluation of preliminary rankings by external review committee
- Electronic or on-site project reviews
- Dec. 1, 2022: Prioritized list to Governor and Legislature
- 2023 session: Legislature sets funding level
- Project details finalized
- Funds available July 1, 2023 to reimburse project expenses



Region AT Contacts

Northwest: Snohomish, King, Whatcom, Skagit, San Juan, Island

Kenneth Loen

LoenK@wsdot.wa.gov, 206-464-1231

Olympic: Clallam, Jefferson, Grays Harbor, Kitsap, Mason, Thurston, Pierce

Theresa Turpin

TurpinT@wsdot.wa.gov, 360-357-2675

Washington State Ferries

Justin Resnick

ResnicJ@wsdot.wa.gov, 206-515-3450

Central Puget Sound Urban Mobility and Access–Planning

Thomas Noyes

NoyesT@wsdot.wa.gov, 206-464-1272

Eastern: Ferry, Stevens, Pend Oreille, Lincoln, Spokane, Adams, Whitman

Jerry Compton

Compton@wsdot.wa.gov, 509-324-6196

North Central: Okanogan, Chelan, Douglas, Grant

Maxwell Nelson

NelsonM@wsdot.wa.gov, 509-667-2910

Southwest: Lewis, Pacific, Cowlitz, Clark, Skamania, Klickitat, Wahkiakum

Kelly Smith

SmitKel@wsdot.wa.gov, 360-905-2053

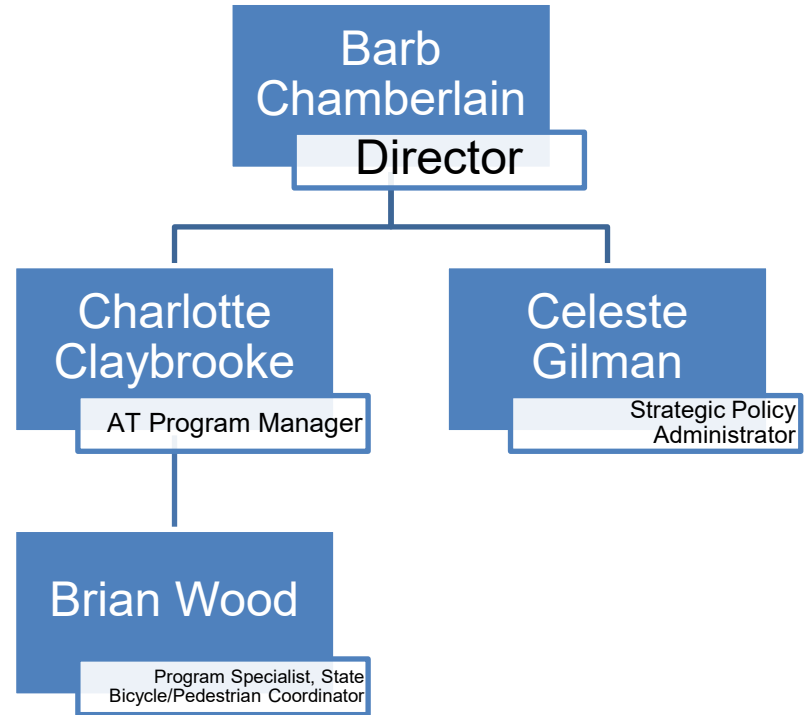
South Central: Kittitas, Yakima, Benton, Franklin, Walla Walla, Columbia, Garfield, Asotin

Paul Gonseth

GonsetP@wsdot.wa.gov, 509-577-1630

Small + Mighty HQ Team

- ▶ **Barb Chamberlain**
AT Division Director
barb.chamberlain@wsdot.wa.gov
- ▶ **Charlotte Claybrooke**
AT Division Program Manager
claybrc@wsdot.wa.gov
- ▶ **Brian Wood**
AT Division Program Specialist
woodb@wsdot.wa.gov
- ▶ **Celeste Gilman**
Strategic Policy Administrator
gilmanc@wsdot.wa.gov



Walk + Roll with Us!

- ▶ [Subscribe](#) to the WSDOT Walk + Roll E-News

