

# *North Corridor Update*



*Snohomish County Council*  
*March 22, 2023*

# Largest rail expansion in the country

Serving a region of over 3 million

## Link Light Rail

- 116-mile regional system with over 50 stations at build-out
- Connecting Everett, Lynnwood, Bellevue, Redmond, Kirkland, Issaquah, Tacoma, Ballard and West Seattle



# *Lynnwood Link Extension*

# Lynnwood Link Extension

**Length:** 8.5 miles

**Stations:** 4 stations

**Start of Service:** 2024

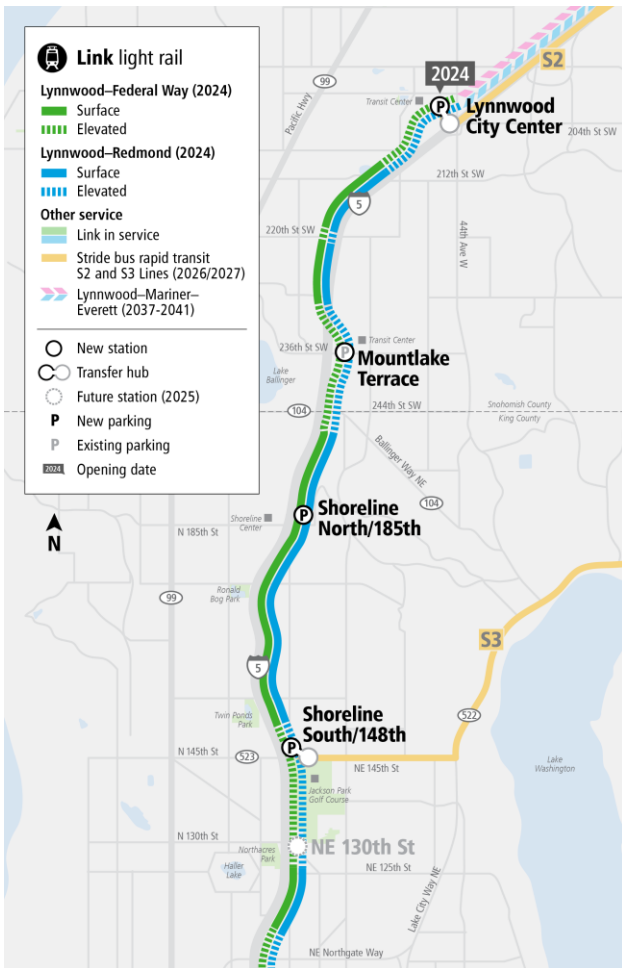
**Daily Project Riders:** 47,000 – 55,000 daily riders (2026)

**Projected travel times:**

Lynnwood to Westlake (downtown Seattle): 28 minutes

Shoreline South/148<sup>th</sup> to University of Washington: 11 minutes

Lynnwood to Bellevue Downtown: 51 minutes

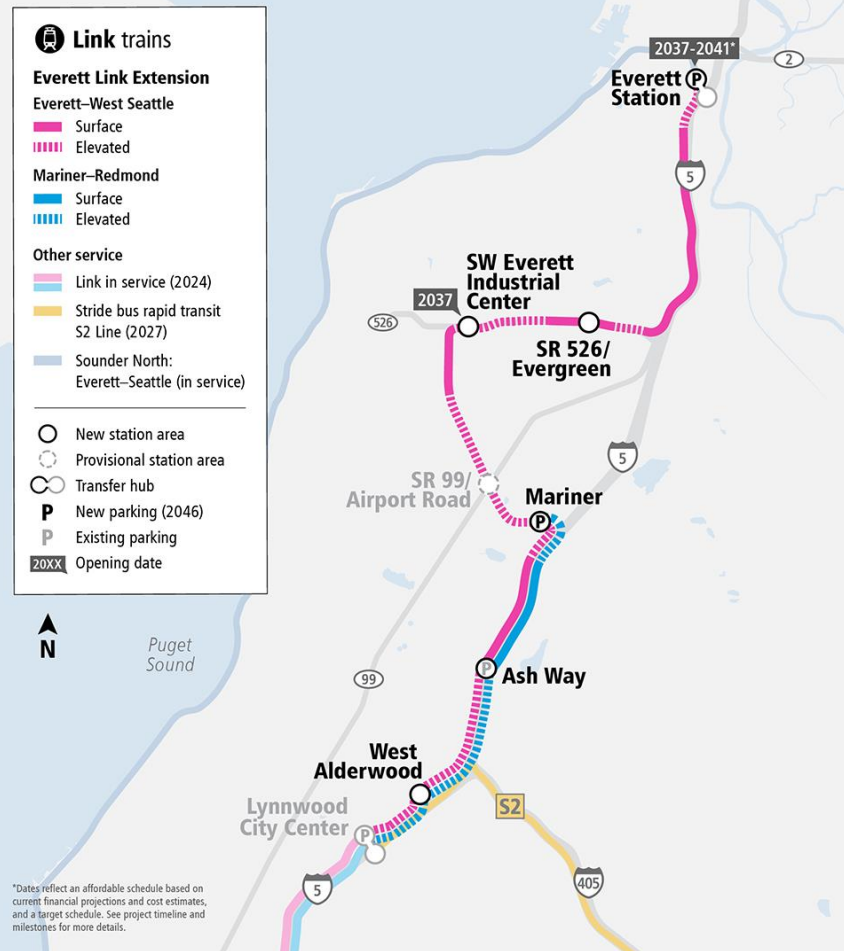


# *Everett Link Extension*

# Everett Link Extension

## ST3 Representative Project

- **Length:** 16 miles
- **Stations:** six plus one provisional (unfunded) station
- **Opening service:** 2037 – 2041
- **New parking** at Everett Station and Mariner station opens 2046





# Operations and Maintenance Facility North

## *Facility supports system-wide needs*

- Critical facility to store, maintain and repair the trains
- Capacity: 150+ light rail vehicles
- Supports 450+ high-skilled, living wage jobs at the facility
- Opens 2034



Example: OMF East (Bellevue)



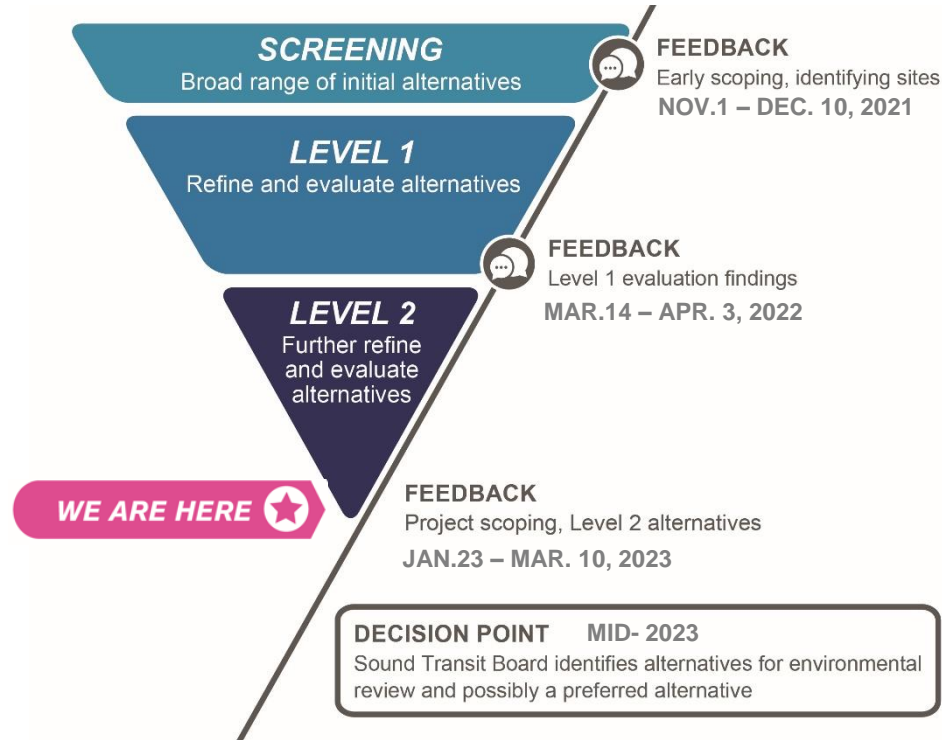
# Everett Link Schedule



*\*Dates reflect an affordable schedule based on current financial projections and cost estimates, and a target schedule. Schedule is subject to change.*



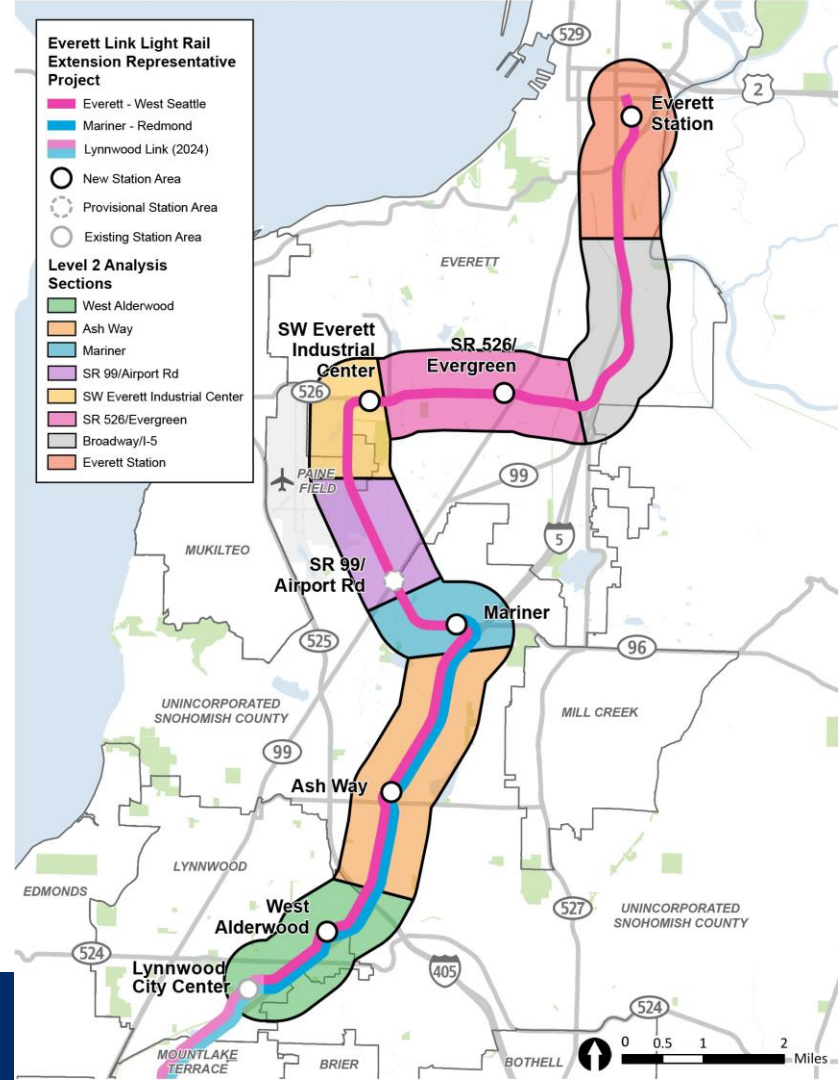
# Alternatives development process



***Station & Route  
Alternatives Review***

# Project Sections

- Project divided into 8 sections for evaluation
- Generally, each section includes all station alternatives for one station area and associated route alternatives



***Everett Station***

# Everett Station

## Key Features

- All stations and routes are elevated.
- Northern end of the Link system and a major connection hub.
- Approximately 1,000 new parking spaces planned by 2046.



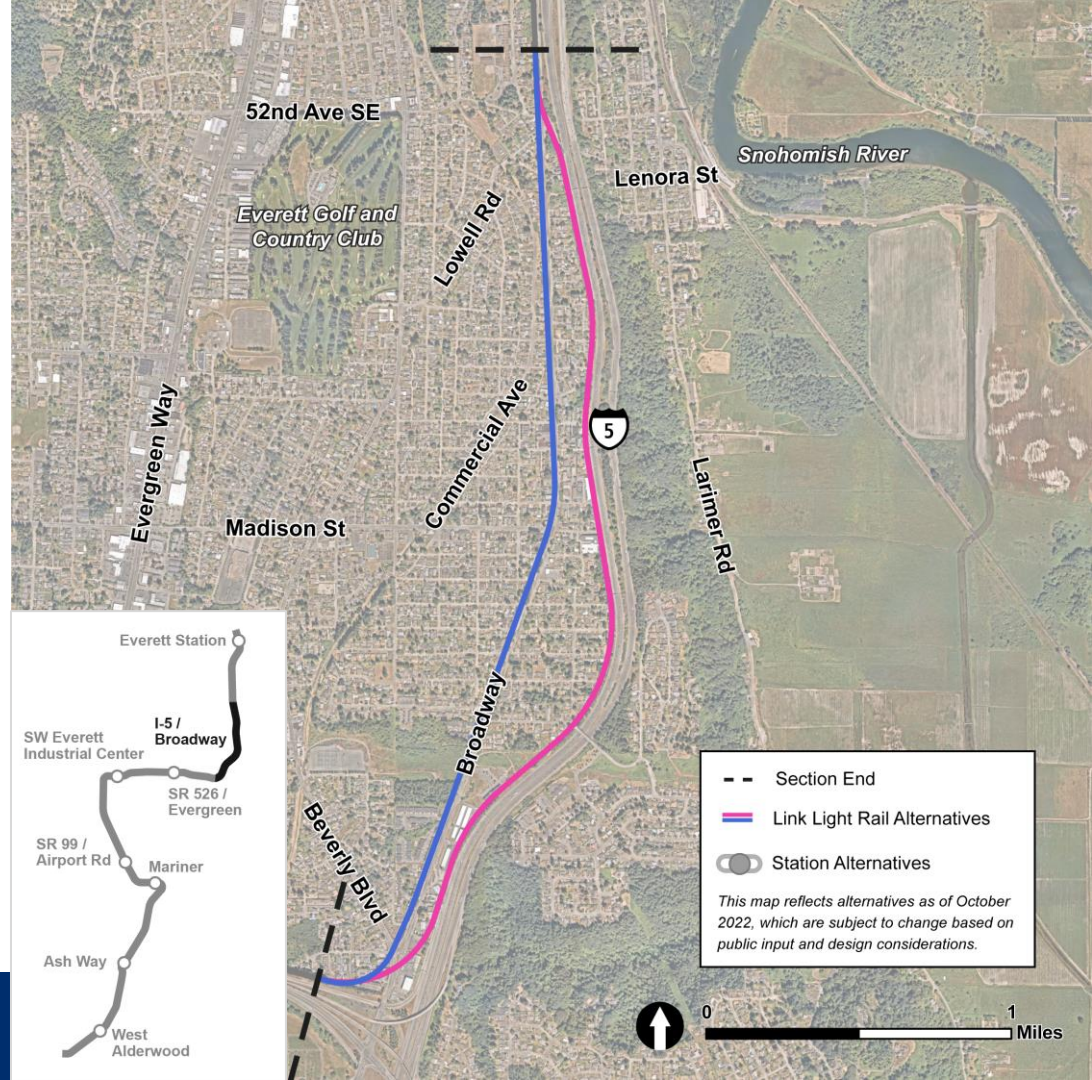
# *I-5 / Broadway Routes*



# I-5 / Broadway Routes

## Key Features

- Section includes two route alternatives from SR 526 and I-5 to Lowell Road and I-5.
- Section does not include a station.



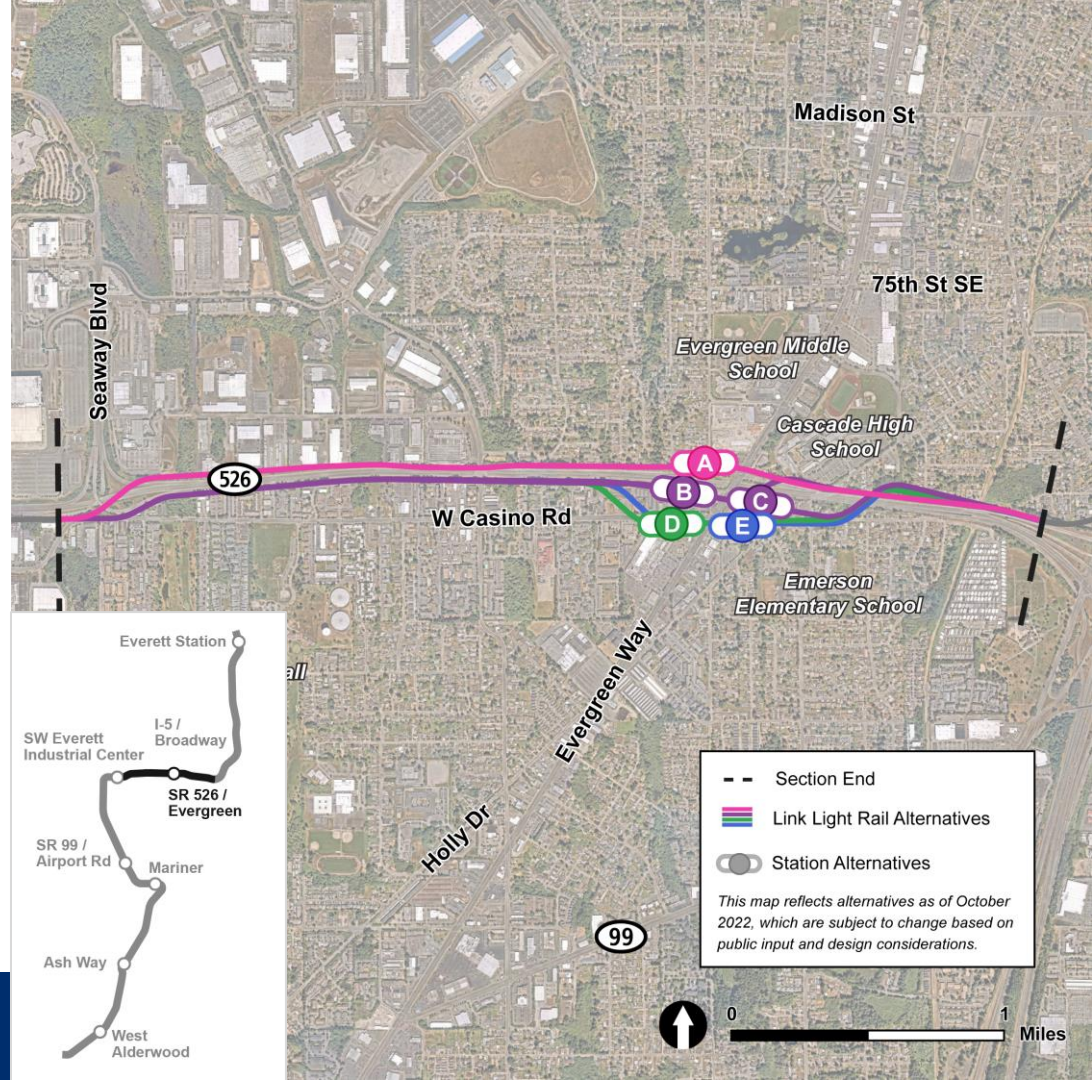
***SR 526 / Evergreen***



# SR 526/Evergreen

## Key Features

- All stations and routes are elevated except EGN-A, which would be just below street level.
- Bus stops would be located on existing streets.
- No new parking is included at this station as part of this project.

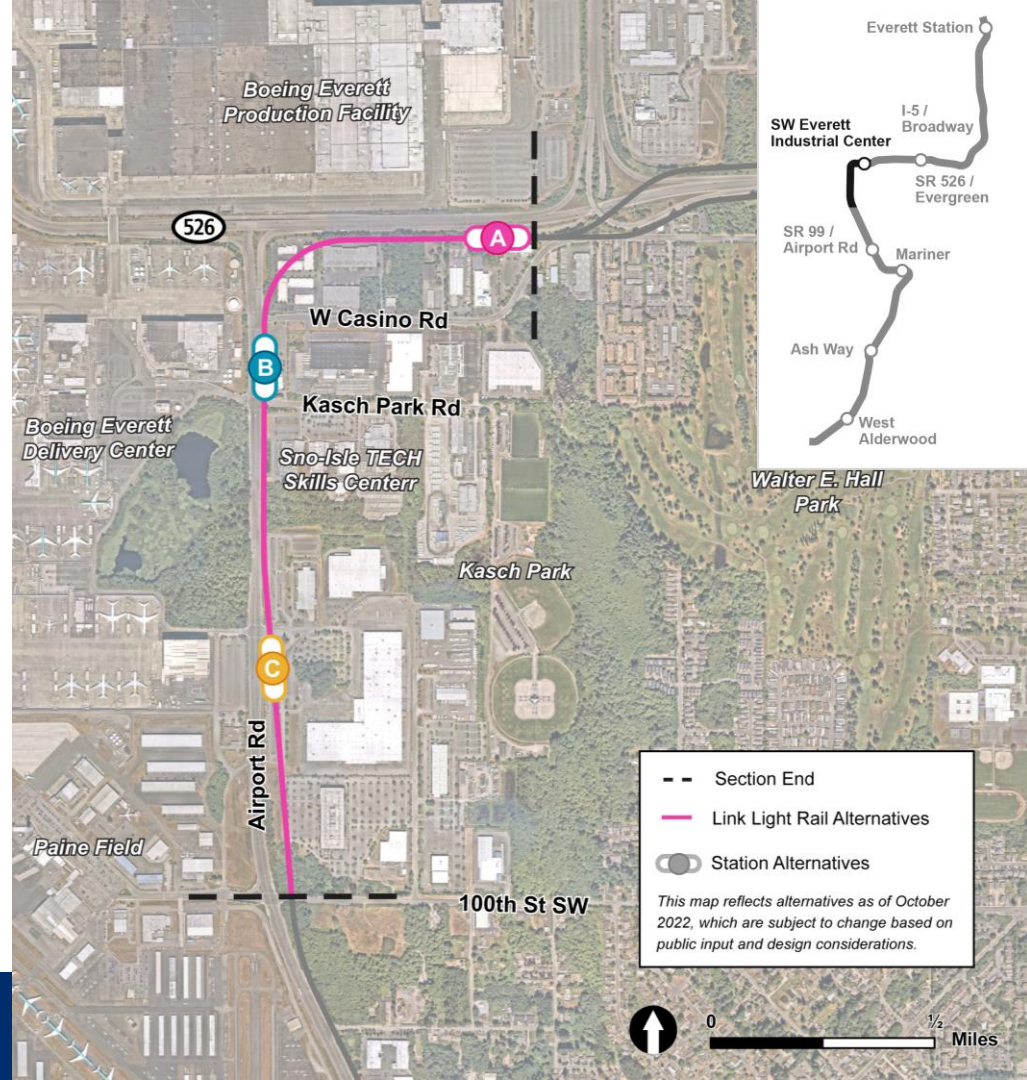


***SW Everett Industrial Center***

# SW Everett Industrial Center

## Key Features

- All stations and routes are elevated.
- All options are within the Paine Field/Boeing Everett Manufacturing/Industrial Center.
- Bus stops may remain on-street and off-street on the station area
- Includes space for shuttle service to Paine Field Airport and to the Boeing Everett Production Facility.
- No new parking is included in this station area.



***SR 99 / Airport Road***



# SR 99/Airport Rd

## Key Features

- All stations and routes would be elevated.
- This station is provisional, meaning it is part of the planning process but not yet funded for construction.
- Bus stops would be located on existing streets.
- No new parking is included in this station area.



***Mariner***



# Mariner

## Key Features

- All stations and routes are elevated.
- Community Transit serves this area with local buses and the Swift Green Line.
- Major hub for local and regional buses and a light rail transfer point.
- Approximately 550 new parking spaces are planned at this station by 2046.
- Snohomish County is actively seeking funding for a new multimodal crossing along 130th Street across I-5 to 8th Avenue W.

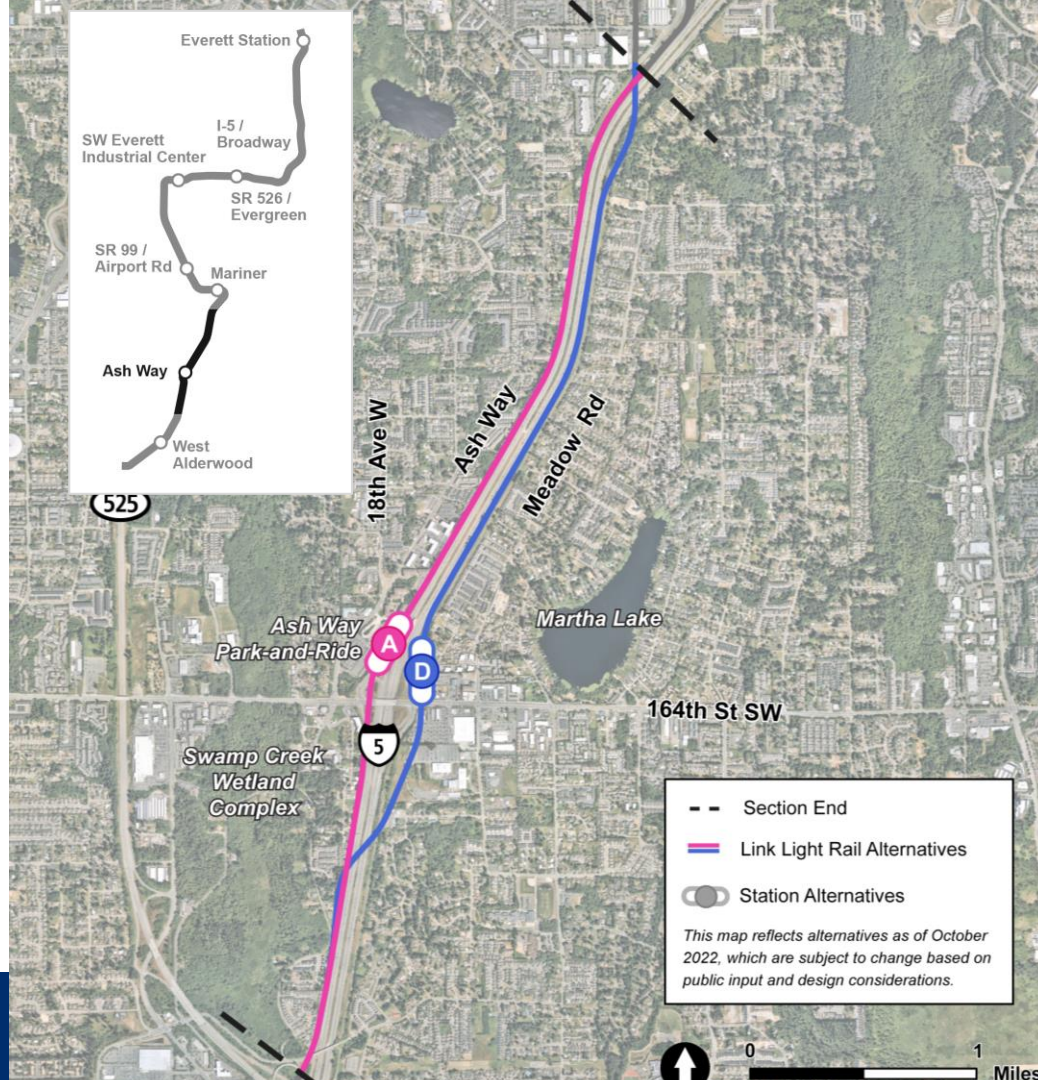


*Ash Way*

# Ash Way

## Key Features

- ASH-A station would be elevated, and ASH-D station would be just below street level.
- Community Transit serves this area with local and commuter buses, including future Swift Orange Line.
- Snohomish County plans to complete a new multimodal crossing of I-5 north of 164th Street SW, which is partially funded.
- No new parking is included in this station area.



***West Alderwood***



# West Alderwood

## Key Features

- All routes and stations are elevated.
- Bus stops may be located both on existing streets and in future off-street areas.
- No new parking is included in this station area.

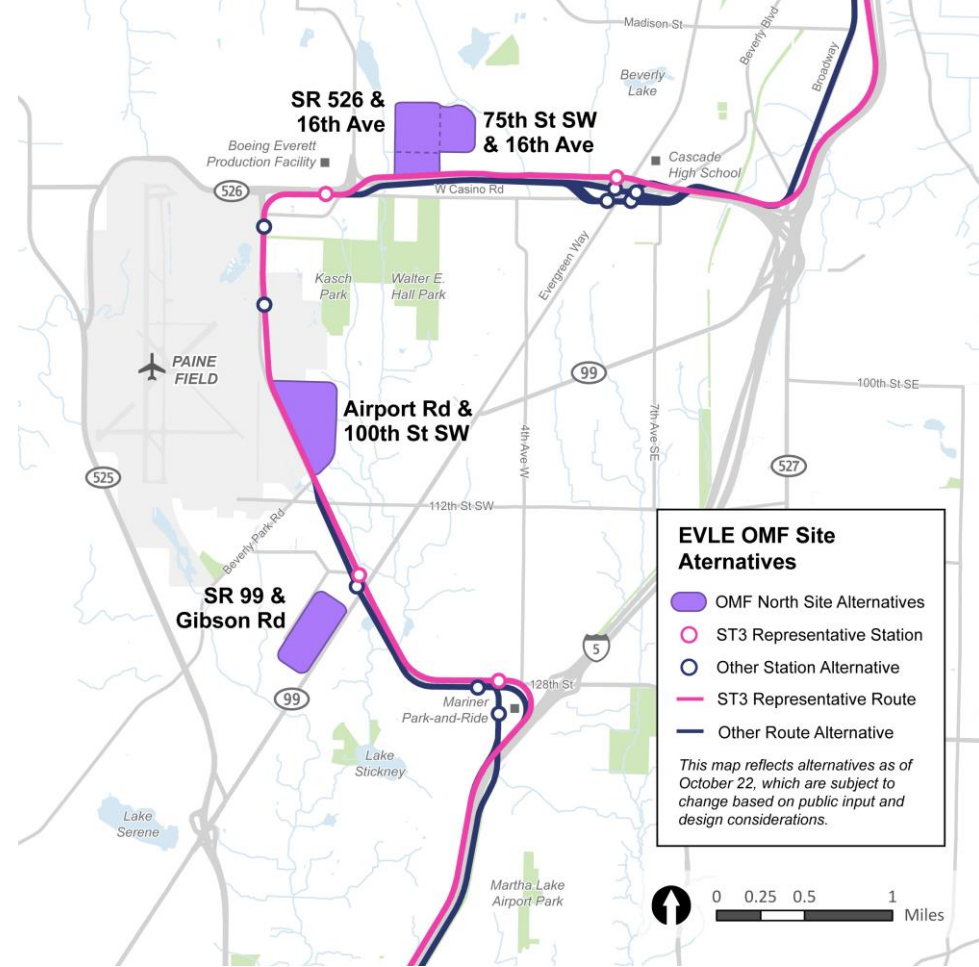


***OMF North***

# OMF North

## Key Features

- Supports the entire system.
- Approximately 60-70+ acres required.
- Support more than 450 high-skilled, living wage jobs.
- Average employee wage is more than \$40 per hour at existing OMF facility.



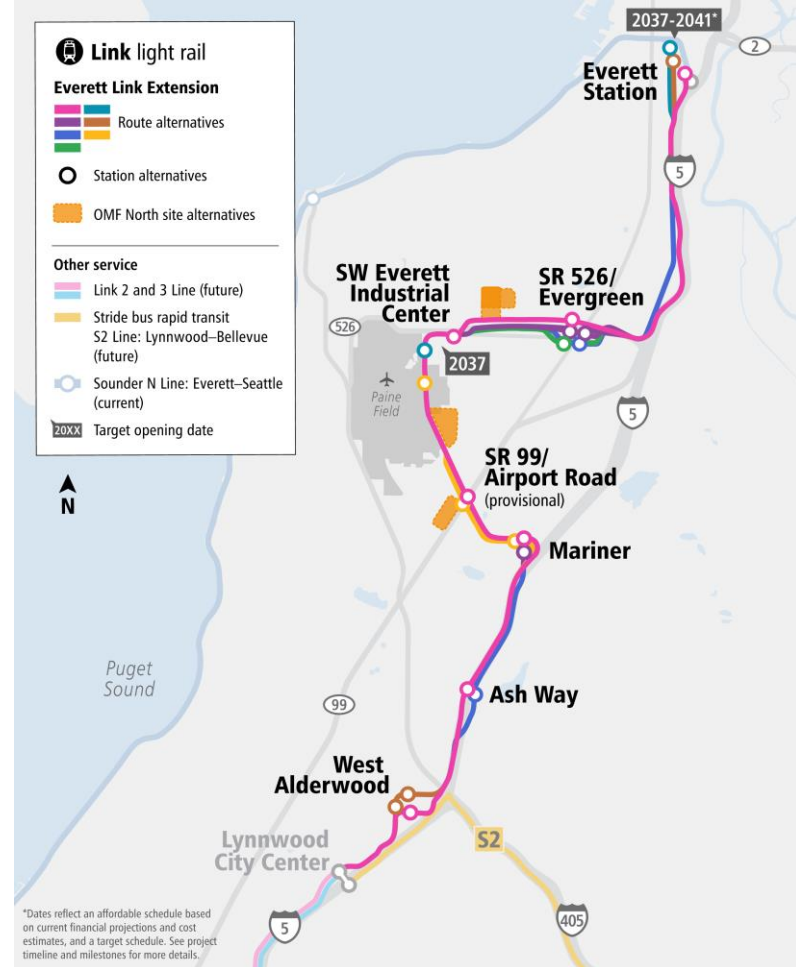
***Scoping,  
Public Engagement  
and Next Steps***

# Scoping Jan.23- Mar.10

## Public meeting dates:

- Virtual: February 7, 2023 (5:30-7:30 pm)
- In-Person: February 15, 2023 (5:30-7:30pm)  
Cascade High School
- Virtual: March 1, 2023 (11:30 am-1:30 pm)

Scoping is an opportunity for agencies, Tribes, and members of the public to submit formal comments



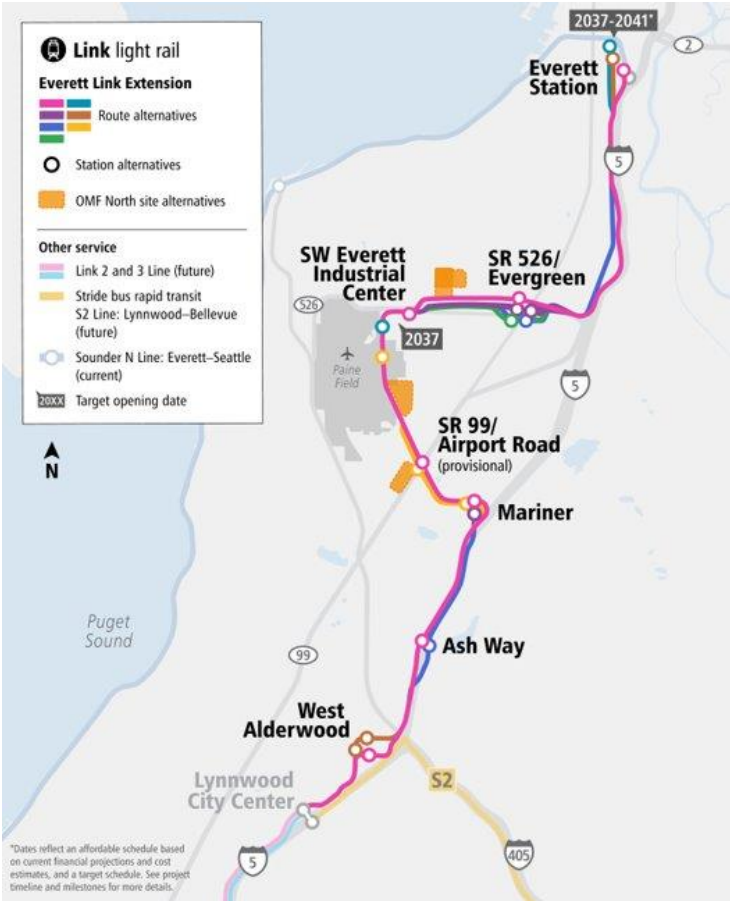


# EVLE Decision Making Process

<b>Scoping</b>	Jan 23 – Mar 10	Level 2 Evaluation Results & public input on alternatives and topics for the Draft EIS
<b>CAG Meeting #7</b>	March 29	Level 2 Evaluation Results & recommendation to ELG
<b>ELG Meeting #8</b>	April 25	Level 2 Evaluation Results & recommendation to Board
<b>Sound Transit Board System Expansion Committee</b>	May 11	Briefing on Scoping input and CAG/ELG update
<b>Sound Transit Board System Expansion Committee</b>	June 8	Identify preferred alternative and other alternatives for environmental review
<b>Sound Transit Board Full Board</b>	June 22	Identify alternatives for environmental review with a Preferred Alternative



# Questions?



*Thank you.*



 [soundtransit.org](https://www.soundtransit.org)

