

**EXECUTIVE RECOMMENDED  
HOUSEKEEPING AMENDMENT SHEET 1  
ORDINANCE NO. 21-057**

**Amendment Name:** Housekeeping amendments to Exhibit A

**Brief Description:** Housekeeping amendments to Exhibit A: Snohomish County Tomorrow July 28, 2021, Recommended Countywide Planning Policies for Snohomish County. Amendments update Figure 2 and correct typographical errors, incorrect code citations and background information, and inconsistent terminology.

**Existing Ordinance Findings or Conclusions to Modify:**

On page 5, line 30, insert new finding as follows:

5. Housekeeping amendments have been made to the updated CPPs in Exhibit A to this ordinance. Amendments include correction of typographical errors, incorrect code citations and background information, and inconsistent terminology. In addition, Figure 2 is amended to reflect the headings and organization of the updated CPPs and to restore a footnote that was inadvertently omitted.

**Deletions or Modifications to the Existing Ordinance Exhibit A:**

On Exhibit A, page 3, line 3, after “towns,” delete “two” and insert “(~~two~~) three”

On Exhibit A, page 5, lines 3-4, after “(WAC)” delete “specific” and insert “specifies”

On Exhibit A, page 6, delete Figure 2-Internal Flow of the Countywide Planning Policies and replace with:

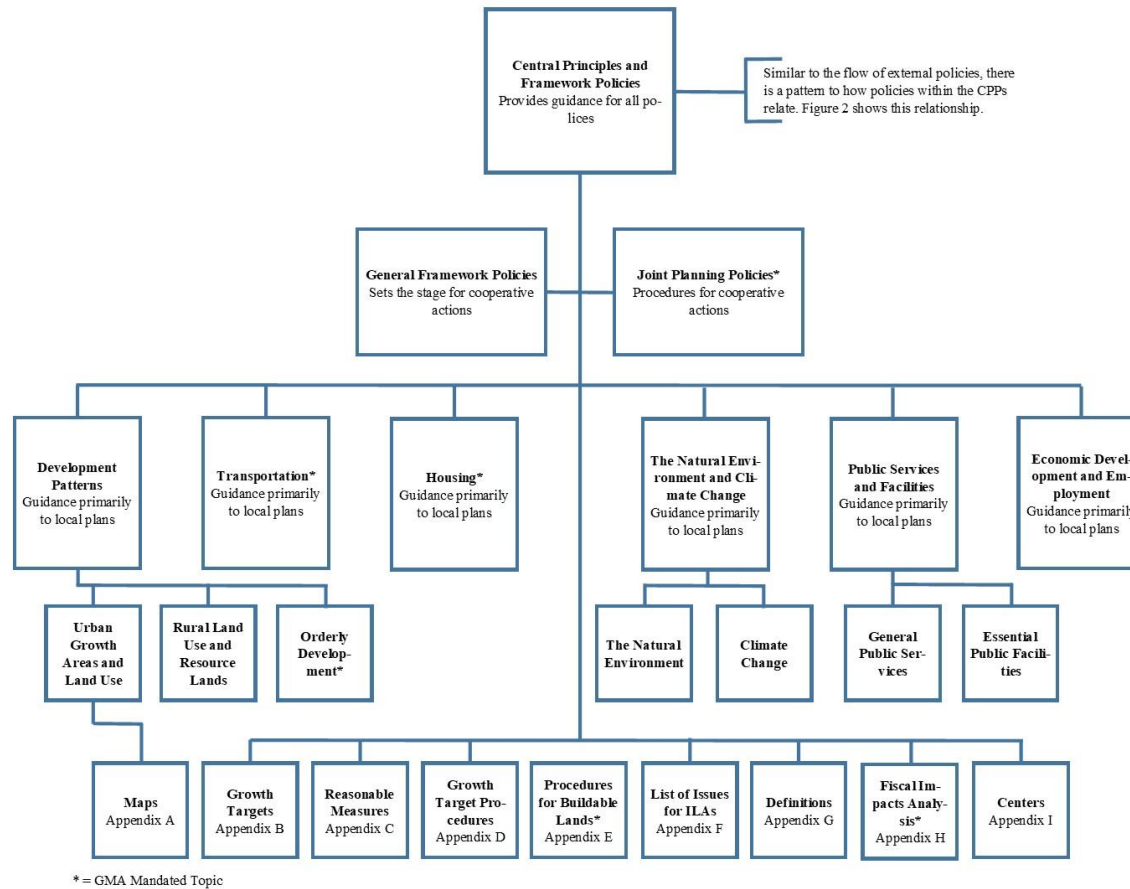


Figure 2—Internal Flow of the Countywide Planning Policies

On Exhibit A, page 13, lines 18-19, after “supports the” delete “regional growth strategy,” and insert “~~((regional growth strategy,))~~ Regional Growth Strategy and”

On Exhibit A, page 13, lines 35-36, after “regional growth centers, regional” delete “manufacturing and industrial” and insert “~~((manufacturing and industrial))~~ manufacturing/industrial”

On Exhibit A, page 14, line 7, after “future,” delete “and” and insert “~~((and))~~”

On Exhibit A, page 14, line 8, after “region,” insert “and”

On Exhibit A, page 14, line 20, after “~~Council’s))~~” delete “PSRCs” and insert “PSRC’s”

On Exhibit A, page 20, GF-7, in the fourth line of text, after “and no later” delete “then” and insert “than”

On Exhibit A, page 20, JP-1, in the third and fourth line of text, after “RCW” delete “20.70A.110” and insert “36.70A.110”

On Exhibit A, page 22, lines 27-28, after “~~((and compact urban communities))~~” insert “ ”

On Exhibit A, page 24, DP-2.e.5, after “mapping” delete “error.” and insert “~~((error.))~~ error.<sup>12</sup>” and insert as footnote 12 the text below and renumber subsequent footnotes accordingly

<sup>12</sup> The type of errors that this policy intends to correct are cases where the UGA line incorrectly bisects an existing building or parcel, where it inadvertently and incorrectly follows an arbitrary feature such as a section line, or where the boundary is on the wrong side of a right-of-way that is expected to be annexed by a city.

On Exhibit A, page 28, DP-9, in the third line of text, after “growth centers and” delete “manufacturing and industrial” and insert “~~((manufacturing and industrial))~~ manufacturing/industrial”

On Exhibit A, page 30, DP-22.a, in the ninth line of text, after “Policy” delete “JP-3” and insert “~~((JP-3))~~ JP-2”

On Exhibit A, page 30, DP-23, in the first line of text, after “under” delete “DP-20” and insert “~~((DP-20))~~ DP-22”

On Exhibit A, page 30, DP-24, in the third line of text, after “subject to” delete “DP-20” and insert “~~((DP-20))~~ DP-22”

On Exhibit A, page 31, line 22, after “counties,” delete “where ever” and insert “wherever”

On Exhibit A, page 32, DP-30.d, in the second line of text, after “etc.,” delete “and,” and insert “(~~and,~~)”

On Exhibit A, page 32, DP-30.e, in the second line of text, after “activities” delete “.” and insert “(~~.); and”~~

On Exhibit A, page 34, DP-39, in the second line of text, after “intended” insert “to”

On Exhibit A, page 38, line 4, after “GMA and” delete “Vision 2040” and insert “(~~(Vision 2040)) VISION 2050”~~

On Exhibit A, page 38, line 6, after “Planning” insert “Policies”

On Exhibit A, page 38, HO-1.e, in the second line of text, after “in” delete “CPP HO-4” and insert “(~~(CPP HO-4)) CPP-HO-3”~~

On Exhibit A, page 45, ED-3, in the second line of text, after “growth centers,” delete “manufacturing and industrial” and insert “(~~(manufacturing and industrial)) manufacturing/industrial”~~

On Exhibit A, page 45, ED-4, in the fourth and fifth lines of text, after “regional growth centers,” delete “manufacturing industrial” and insert “(~~(manufacturing industrial)) manufacturing/industrial”~~

On Exhibit A, page 46, ED-7, in the first and second line of text, after “as a” delete “Manufacturing Industrial” and insert “(~~(Manufacturing Industrial)) Manufacturing/Industrial”~~

On Exhibit A, page 48, ED-17, in the second line of new text, after “Cascade Industrial Center as a” delete “Manufacturing Industrial” and insert “Manufacturing/Industrial”

On Exhibit A, page 49, line 4, after “shall” delete “as” and insert “(~~(as)) at”~~

On Exhibit A, page 65, line 10, after “sewers,” delete “are (~~allowed~~)” and insert “(~~(are allowed))”~~

On Exhibit A, page 65, line 22, after “(RCW” delete “23.70A.210(3)(C)” and insert “36.70A.210(3)(c)”

On Exhibit A, page 79, line 12, after “high-capacity transit (” delete “DP-8 and DP-18” and insert “CPP-DP-8 and CPP-DP-18”

On Exhibit A, page 79, line 13, after “balance (” delete “CPP-DP-7” and insert “CPP-DP-6”

On Exhibit A, page 79, line 14, after “time (” delete “CPP-DP-24” and insert “CPP-DP-26”

On Exhibit A, page 82, line 24, after “Steering” delete “Committed” and insert “Committee”

On Exhibit A, page 92, line 23, after “Chapter” delete “365-196-210(9)” and insert “(~~365-196-210(9)) 365-196-210(8)”~~

On Exhibit A, page 93, line 36, after “RCW” delete “36.70.A.110(2)” and insert “(~~36.70.A.110(2)) 36.70A.110(2)”~~

On Exhibit A, page 94, line 16, after “schools.” delete “[36.70.A.030(12)]” and insert “(~~[36.70.A.030(12)]) RCW 36.70A.030(17)”~~

On Exhibit A, page 97, lines 1-2, after “and two Regional” delete “Manufacturing Industrial” and insert “Manufacturing/Industrial”

On Exhibit A, page 97, line 7, after “Regional” delete “Manufacturing and Industrial” and insert “Manufacturing/Industrial”

**Council Disposition:** \_\_\_\_\_ **Date:** \_\_\_\_\_

## AMENDMENT SHEET 2

## Ordinance No. 21-057 (ECAF 2021-0647)

**Amendment Name:** Growth Management Act goals in the Countywide Planning Policies

**Brief Description:** Updating the GMA goals as stated in the CPPs

**Affected Ordinance Section:** Ord. 21-057 adopting CPPs [SCT Version]

**Affecting:** Countywide Planning Policies for Snohomish County [SCT Version]

**Existing Ordinance Recitals, Findings, or Sections to Add, Delete, or Modify:****A. Ordinance Page 5, Lines 33-45, delete:**

1. The updated CPPs include amended narrative in the introductory chapter titled "Introduction to the Countywide Planning Policies." In addition to the changes described below, amendments to the existing narrative are intended to improve readability, update references as needed, and make minor corrections.
  - a. The "Regional Context" section is updated to incorporate the regional vision as found in VISION 2050, including updates to reflect the description of the plan, the updated "vision for 2050", the updated regional overarching goals, and the updated Regional Growth Strategy.
  - b. The Countywide Context section is updated to acknowledge the unknown aspects of the COVID-19 public health emergency, which occurred during the updated CPP development process.

**And insert:**

1. The updated CPPs include amended narrative in the introductory chapter titled "Introduction to the Countywide Planning Policies." In addition to the changes described below, amendments to the existing narrative are intended to improve readability, update references as needed, and make minor corrections.
  - a. The "State Context and Goals" section is updated to (1) incorporate a 14<sup>th</sup> goal of GMA related to shorelines of the state that is in a different section of GMA than the 13 goals currently listed in the CPPs and (2) revise Goal 4 (housing) to reflect amendments to this goal enacted by the state legislature in 2021.
  - b. The "Regional Context" section is updated to incorporate the regional vision as found in VISION 2050, including updates to reflect the description of the plan, the updated "vision for 2050", the updated regional overarching goals, and the updated Regional Growth Strategy.

- c. The Countywide Context section is updated to acknowledge the unknown aspects of the COVID-19 public health emergency, which occurred during the updated CPP development process.

**B. Countywide Planning Policies page 8, lines 1-5, delete:**

State Context and Goals

The GMA contains a set of statewide planning goals in RCW 36.70A.020. These goals are intended to guide the development and adoption of comprehensive plans for those counties and cities planning under chapter 36.70A RCW. The numbering of the goals does not indicate priority(~~(, and the list comes from RCW 36.70A.020:))~~).

And **Insert:**

The GMA contains ~~a set of~~ statewide planning goals in RCW 36.70A.020 and RCW 36.70A.480. These goals are intended to guide the development and adoption of comprehensive plans for those counties and cities planning under chapter 36.70A RCW. The numbering of the goals does not indicate priority(~~(, and the list comes from RCW 36.70A.020:))~~).

**C. Countywide Planning Policies page 8, lines 12-14, delete:**

***(4) Housing.*** *Encourage the availability of affordable housing to all economic segments of the population of this state, promote a variety of residential densities and housing types, and encourage preservation of existing housing stock.*

And **Insert:**

***(4) Housing.*** ~~*Encourage the availability of affordable*~~ *Plan for and accommodate housing affordable* *to all economic segments of the population of this state, promote a variety of residential densities and housing types, and encourage preservation of existing housing stock.*

**D. Countywide Planning Policies page 9, after line 9, insert:**

***(14) For shorelines of the state, the goals and policies of the shoreline management act as set forth in RCW 90.58.020 are added as one of the goals of [GMA] without creating an order of priority among the fourteen goals.***

**Council Disposition:** \_\_\_\_\_

**Date:** \_\_\_\_\_

## AMENDMENT SHEET 2a

**Ordinance No. 21-057 (ECAF 2021-0647)**

**Amendment Name:** Growth Management Act goals in the Countywide Planning Policies

**Brief Description:** Updating the GMA goals as stated in the CPPs

**Affected Ordinance Section:** Ordinance Section 1.D.1 and Exhibit A

**Affecting:** Countywide Planning Policies for Snohomish County [Executive Version]

**Existing Ordinance Recitals, Findings, or Sections to Add, Delete, or Modify:****A. Ordinance Page 5, Lines 33-45, delete Finding D.1:**

1. The updated CPPs include amended narrative in the introductory chapter titled "Introduction to the Countywide Planning Policies." In addition to the changes described below, amendments to the existing narrative are intended to improve readability, update references as needed, and make minor corrections.
  - a. The "Regional Context" section is updated to incorporate the regional vision as found in VISION 2050, including updates to reflect the description of the plan, the updated "vision for 2050", the updated regional overarching goals, and the updated Regional Growth Strategy.
  - b. The Countywide Context section is updated to acknowledge the unknown aspects of the COVID-19 public health emergency, which occurred during the updated CPP development process.

**And insert:**

1. The updated CPPs include amended narrative in the introductory chapter titled "Introduction to the Countywide Planning Policies." In addition to the changes described below, amendments to the existing narrative are intended to improve readability, update references as needed, and make minor corrections.
  - a. The "State Context and Goals" section is updated to (1) incorporate a 14<sup>th</sup> goal of GMA related to shorelines of the state that is in a different section of GMA than the 13 goals currently listed in the CPPs and (2) revise Goal 4 (housing) to reflect amendments to this goal adopted by the state legislature in 2021.
  - b. The "Regional Context" section is updated to incorporate the regional vision as found in VISION 2050, including updates to reflect the description of the plan, the updated "vision for 2050", the updated regional overarching goals, and the updated Regional Growth Strategy.
  - c. The Countywide Context section is updated to acknowledge the unknown aspects of the COVID-19 public health emergency, which occurred during the updated CPP development process.



**B. Exhibit A: Countywide Planning Policies page 8, lines 2-5, delete:**

The GMA contains a set of statewide planning goals in RCW 36.70A.020. These goals are intended to guide the development and adoption of comprehensive plans for those counties and cities planning under chapter 36.70A RCW. The numbering of the goals does not indicate priority (~~and the list comes from RCW 36.70A.020~~).

**And Insert:**

The GMA contains ~~((a set of))~~ statewide planning goals in RCW 36.70A.020 and RCW 36.70A.480. These goals are intended to guide the development and adoption of comprehensive plans for those counties and cities planning under chapter 36.70A RCW. The numbering of the goals does not indicate priority (~~and the list comes from RCW 36.70A.020~~).

**C. Exhibit A: Countywide Planning Policies page 8, lines 12-14, delete:**

**(4) Housing.** *Encourage the availability of affordable housing to all economic segments of the population of this state, promote a variety of residential densities and housing types, and encourage preservation of existing housing stock.*

**And Insert:**

**(4) Housing.** ~~((Encourage the availability of affordable))~~ *Plan for and accommodate housing affordable to all economic segments of the population of this state, promote a variety of residential densities and housing types, and encourage preservation of existing housing stock.*

**D. Exhibit A: Countywide Planning Policies page 9, line 10, insert:**

**(14) For shorelines of the state, the goals and policies of the shoreline management act as set forth in RCW 90.58.020 are added as one of the goals of [GMA] without creating an order of priority among the fourteen goals.**

**Council Disposition:** \_\_\_\_\_ **Date:** \_\_\_\_\_

AMENDMENT SHEET 3

Ordinance No. 21-057 (ECAAF 2021-0647)

**Amendment Name:** UGA Expansion Criteria (DP-2) in the Countywide Planning Policies

**Brief Description:** Retaining Current Policy DP-2.e.10 as stated in the CPPs

**Affected Ordinance Section:** Ordinance Section 1.D and Appendix A

**Affecting:** Countywide Planning Policies for Snohomish County [SCT Version]

**Existing Ordinance Recitals, Findings, or Sections to Add, Delete, or Modify:**

**A. Ordinance Page 8, Lines 10-16, delete Finding D.3.c:**

c. DP-2 provides standards for UGA expansion and is amended to replace the term “churches” with the term “places of worship” to ensure the policy is inclusive. Further changes specify that proposed UGA expansion that is in response to a declaration by the County Executive or County Council that there is a critical shortage of affordable housing should be reasonably calculated to provide affordable housing to low and moderate income households.

**And insert:**

c. DP-2 provides standards for UGA expansion and is amended to replace the term “churches” with the term “places of worship” to ensure the policy is inclusive. No other changes in this policy are warranted at this time. This is in part because additional changes related to affordable housing recommended by SCT and the County Executive were not prepared in consideration of House Bill 1220 (HB 1220) that was enacted by the Washington State Legislature making changes to the GMA related to housing, effective on July 25, 2021. Further consideration of policies in DP-2 by SCT members should take place after local governments have had a chance to receive guidance from the Washington State Department of Commerce on implementation of HB 1220 and had time to review local comprehensive plans and countywide planning policies for consistency with this update to GMA. Additionally, the proposed narrowing of DP-2 did not consider the full effects of the Covid pandemic and increased working from home. The impacts of these related issues are still evolving, creating a situation where the County Council wished to retain its greatest flexibility in responding to new trends.

**B. Appendix A: Countywide Planning Policies page 25, at Policy DP-2.e.10, delete:**

10. The expansion is a response to a declaration by the County Executive, or the County Council by resolution, of a critical shortage of affordable housing which is incurable in a timely manner by the implementation of reasonable measures or other instrumentality reasonably available to the jurisdiction, and the expansion is reasonably calculated to provide affordable housing for low and moderate income households, as defined by the U.S. Department of Housing and Urban Development (HUD).

**And Insert:**

10. The expansion is a response to a declaration by the County Executive, or the County Council by resolution, of a critical shortage of affordable housing which is incurable in a timely manner by the implementation of reasonable measures or other instrumentality reasonably available to the jurisdiction, and the expansion is reasonably calculated to provide affordable housing.

**Council Disposition:** \_\_\_\_\_

**Date:** \_\_\_\_\_

AMENDMENT SHEET 3a

Ordinance No. 21-057 (ECAAF 2021-0647)

**Amendment Name:** UGA Expansion Criteria (DP-2) in the Countywide Planning Policies

**Brief Description:** Retaining Current Policy DP-2.e.10 as stated in the CPPs

**Affected Ordinance Section:** Ordinance Section 1.D.3.c and Exhibit A

**Affecting:** Countywide Planning Policies for Snohomish County [SCT Version]

**Existing Ordinance Recitals, Findings, or Sections to Add, Delete, or Modify:**

**A. Ordinance Page 8, Lines 10-16, delete Finding D.3.c:**

- c. DP-2 provides standards for UGA expansion and is amended to replace the term “churches” with the term “places of worship” to ensure the policy is inclusive. Further changes specify that proposed UGA expansion that is in response to a declaration by the County Executive or County Council that there is a critical shortage of affordable housing should be reasonably calculated to provide affordable housing to low and moderate income households.

**And insert:**

- c. DP-2 provides standards for UGA expansion and is amended to replace the term “churches” with the term “places of worship” to ensure the policy is inclusive. No other changes in this policy are warranted at this time. This is in part because additional changes related to affordable housing recommended by SCT and the County Executive were not prepared in consideration of House Bill 1220 (HB 1220) that was enacted by the Washington State Legislature making changes to the GMA related to housing, effective on July 25, 2021. Further consideration of policies in DP-2 by SCT members should take place after local governments have had a chance to receive guidance from the Washington State Department of Commerce on implementation of HB 1220 and had time to review local comprehensive plans and countywide planning policies for consistency with this update to GMA. Additionally, the proposed narrowing of DP-2 did not consider the full effects of the Covid pandemic and increased working from home. The impacts of these related issues are still evolving, creating a situation where the County Council wished to retain its greatest flexibility in responding to new trends.

**B. Exhibit A: Countywide Planning Policies page 25, at Policy DP-2.e.10, delete:**

- 10. The expansion is a response to a declaration by the County Executive, or the County Council by resolution, of a critical shortage of affordable housing which is incurable in a timely manner by the implementation of reasonable measures or other instrumentality reasonably available to the jurisdiction, and the expansion is reasonably calculated to provide affordable housing for low and moderate income households, as defined by the U.S. Department of Housing and Urban Development (HUD).

**And Insert:**

- 10. The expansion is a response to a declaration by the County Executive, or the County Council by resolution, of a critical shortage of affordable housing which is incurable in a timely manner by the implementation of reasonable measures or other instrumentality reasonably available to the jurisdiction, and the expansion is reasonably calculated to provide affordable housing.

**Council Disposition:** \_\_\_\_\_

**Date:** \_\_\_\_\_

AMENDMENT SHEET 4

Ordinance No. 21-057 (ECAF 2021-0647)

**Amendment Name:** School Siting (PS-21) in the Countywide Planning Policies

**Brief Description:** Revising Proposed Policy PS-21

**Affected Ordinance Section:** Ordinance Section 1.D and Appendix A

**Affecting:** Countywide Planning Policies for Snohomish County [SCT Version]

**Existing Ordinance Recitals, Findings, or Sections to Add, Delete, or Modify:**

**A. Ordinance Page 21, Lines 22-26, delete Finding D.8.I:**

- I. New policy PS-21 provides direction to jurisdictions to work collaboratively to plan for the siting and improvement of school facilities and ensure that school siting is consistent with comprehensive plans and the Regional Growth Strategy. The new policy is consistent with MPP-PS-26.

And insert:

- I. New policy PS-21 provides direction to jurisdictions to work collaboratively to plan for the siting and improvement of school facilities and ensure that school siting is consistent with comprehensive plans including adopted capital facilities plans for each school district. Regional policy MPP-PS-26 does not mention the Regional Growth Strategy (RGS); therefore, referencing the RGS in PS-21 is not necessary for consistency between the countywide and multi-county planning policies.

**B. Appendix A: Countywide Planning Policies page 68, at Policy PS-21, delete:**

PS-21 The County and cities should work collaboratively with school districts to plan for the siting and improvement of school facilities to meet the current and future community needs, consistent with adopted comprehensive plans, the regional growth strategy, and the growth targets in Appendix B.

And Insert:

PS-21 The County and cities should work collaboratively with school districts to plan for the siting and improvement of school facilities to meet the current and future community needs. Considerations should include recent growth, 6-year projections of population and student enrollment growth, adopted comprehensive plans including capital facilities plans, and the growth targets in Appendix B.

**Council Disposition:** \_\_\_\_\_

**Date:** \_\_\_\_\_

AMENDMENT SHEET 4a

Ordinance No. 21-057 (ECAF 2021-0647)

**Amendment Name:** School Siting (PS-21) in the Countywide Planning Policies

**Brief Description:** Revising Proposed Policy PS-21

**Affected Ordinance Section:** Ordinance Section 1.D.8.I and Exhibit A

**Affecting:** Countywide Planning Policies for Snohomish County [SCT Version]

**Existing Ordinance Recitals, Findings, or Sections to Add, Delete, or Modify:**

**A. Ordinance Page 21, Lines 22-26, delete Finding D.8.I:**

- I. New policy PS-21 provides direction to jurisdictions to work collaboratively to plan for the siting and improvement of school facilities and ensure that school siting is consistent with comprehensive plans and the Regional Growth Strategy. The new policy is consistent with MPP-PS-26.

And insert:

- I. New policy PS-21 provides direction to jurisdictions to work collaboratively to plan for the siting and improvement of school facilities and ensure that school siting is consistent with comprehensive plans including adopted capital facilities plans for each school district. Regional policy MPP-PS-26 does not mention the Regional Growth Strategy (RGS); therefore, referencing the RGS in PS-21 is not necessary for consistency between the countywide and multi-county planning policies.

**B. Exhibit A: Countywide Planning Policies page 68, at Policy PS-21, delete:**

PS-21 The County and cities should work collaboratively with school districts to plan for the siting and improvement of school facilities to meet the current and future community needs, consistent with adopted comprehensive plans, the regional growth strategy, and the growth targets in Appendix B.

And Insert:

PS-21 The County and cities should work collaboratively with school districts to plan for the siting and improvement of school facilities to meet the current and future community needs. Considerations should include recent growth, 6-year projections of population and student enrollment growth, adopted comprehensive plans including capital facilities plans, and the growth targets in Appendix B.

**Council Disposition:** \_\_\_\_\_

**Date:** \_\_\_\_\_