


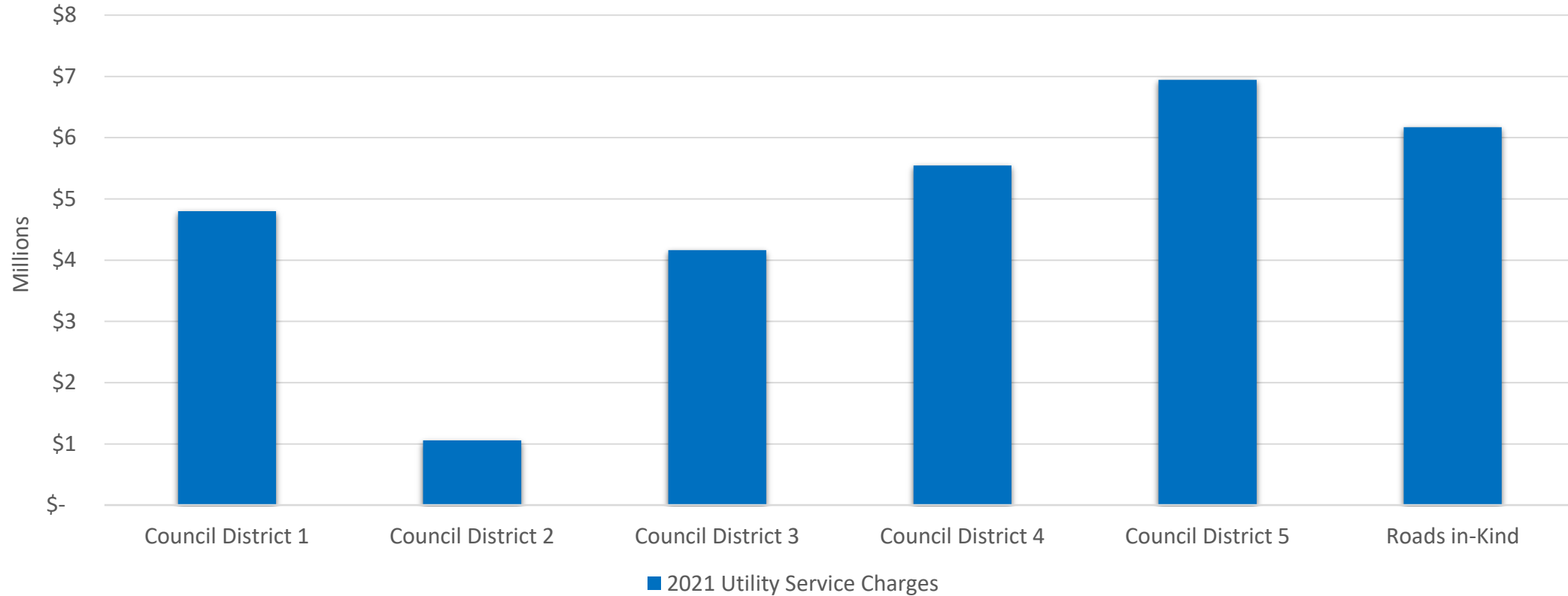
2021 SWM Financial Report

Gregg Farris, P.E.
Surface Water Management Director
Department of Conservation and Natural Resources

June 14, 2022

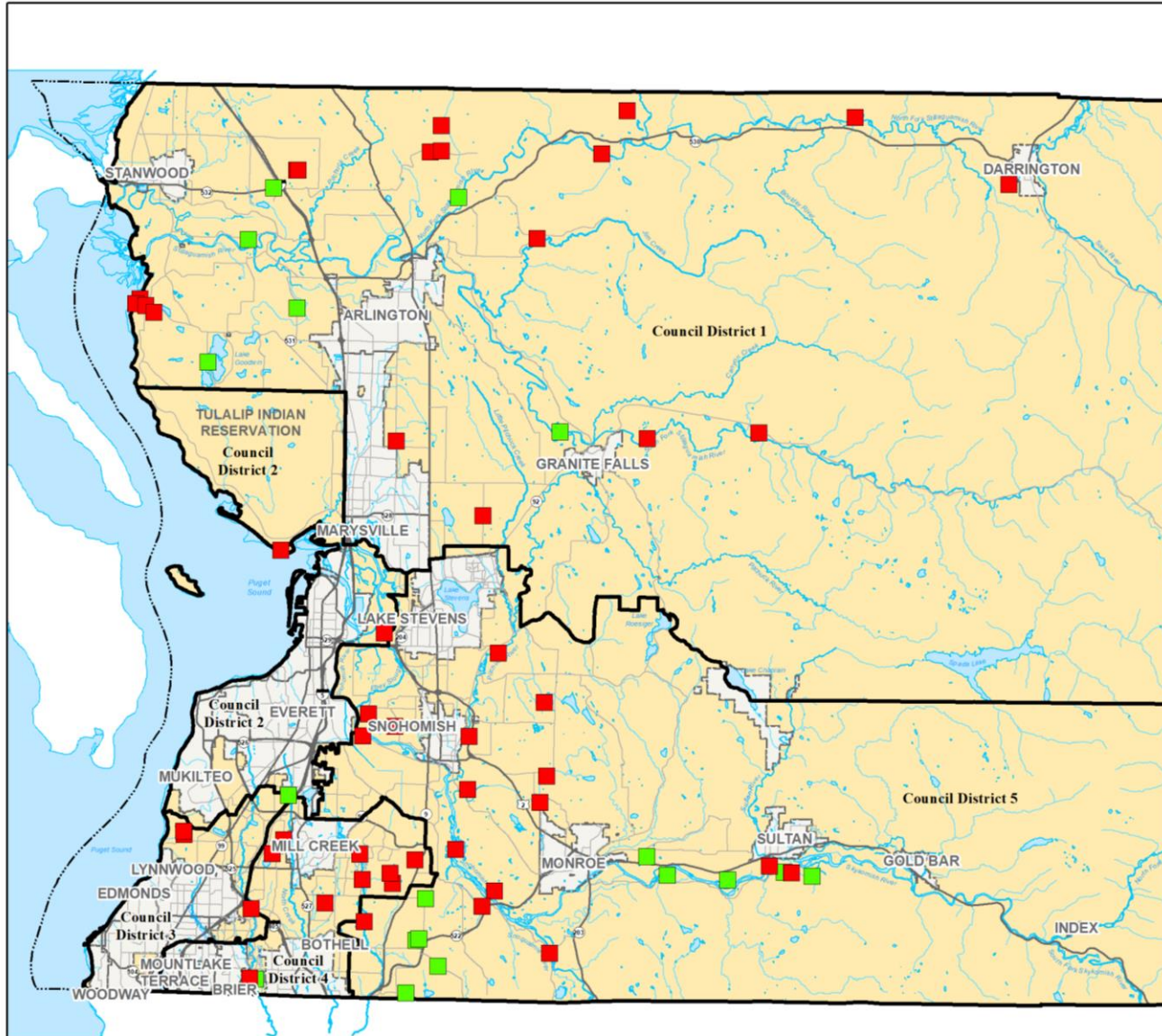


2021 SWM Utility Charge Revenues



SWM Utility Service Charges	Council District 1	Council District 2	Council District 3	Council District 4	Council District 5	Roads in-Kind	Total
Utility Charges	\$ 4,799,500	\$ 1,058,050	\$ 4,164,680	\$ 5,546,900	\$ 6,942,630	\$ 6,168,640	\$ 28,680,400

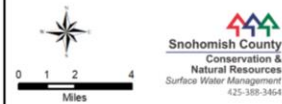
SWM Capital Projects 2021



Countywide Capital Projects in 2021

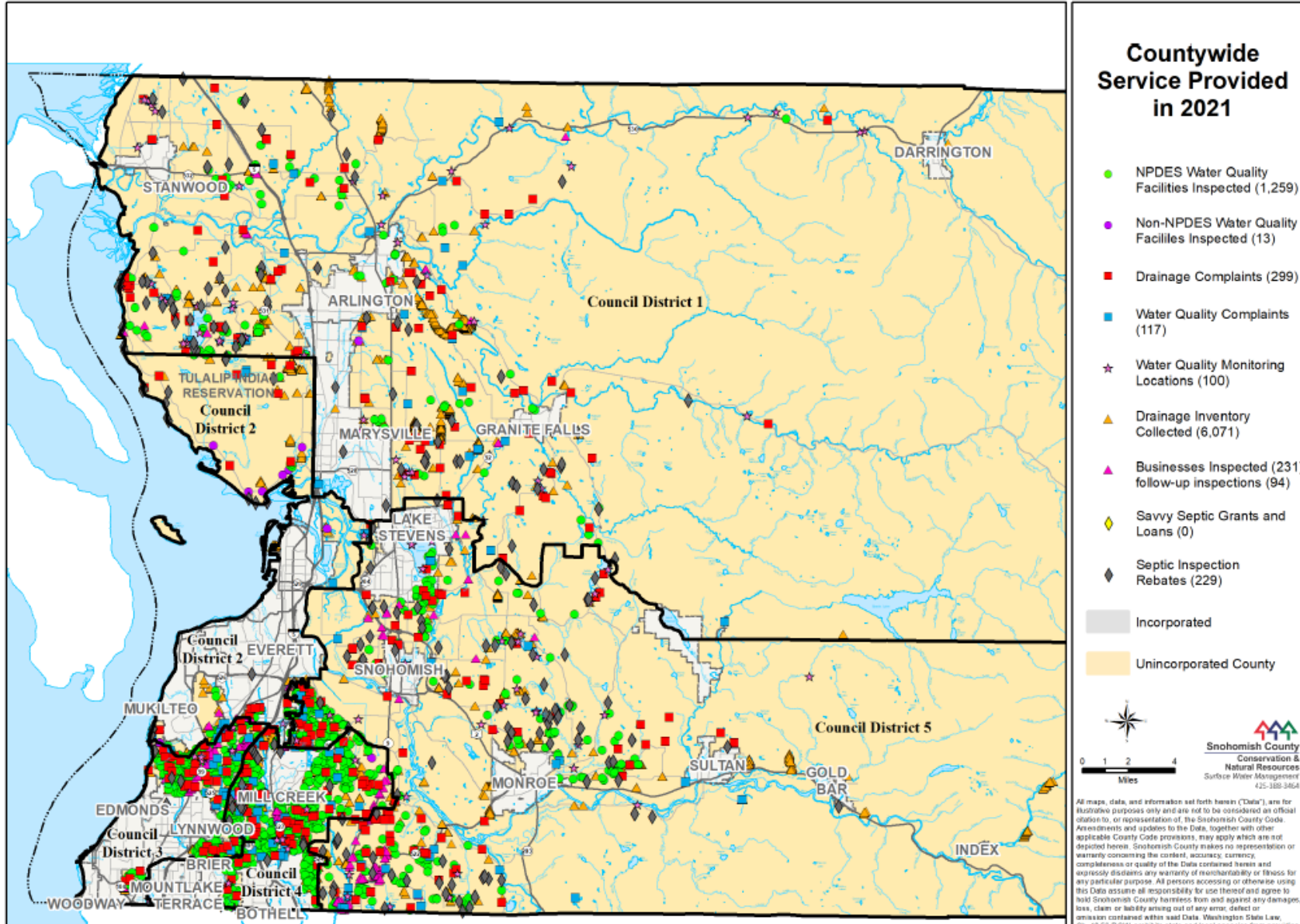
- In Design (48)
- Constructed or Implemented (18)
- Incorporated
- Unincorporated County

- In Design (48)
- Constructed or Implemented (18)
- Incorporated
- Unincorporated County



All maps, data, and information set forth herein ("Data"), are for illustrative purposes only and are not to be considered an official citation to, or representation of, the Snohomish County Code. Amendments and updates to the Data, together with other applicable County Code provisions, may apply which are not depicted herein. Snohomish County makes no representation or warranty concerning the content, accuracy, currency, completeness or quality of the Data contained herein and expressly disclaims any warranty of merchantability or fitness for any particular purpose. All persons accessing or otherwise using this Data assume all responsibility for use thereof and agree to hold Snohomish County harmless from and against any damages, loss, claim or liability arising out of any error, defect or omission contained within said Data. Washington State Law, Ch. 42.50 RCW, prohibits state and local agencies from providing access to lists of individuals intended for use for commercial purposes and, thus, no commercial use may be made of any Data comprising lists of individuals contained herein.

SWM Non-Capital Projects 2021



2021 SWM Expenditures



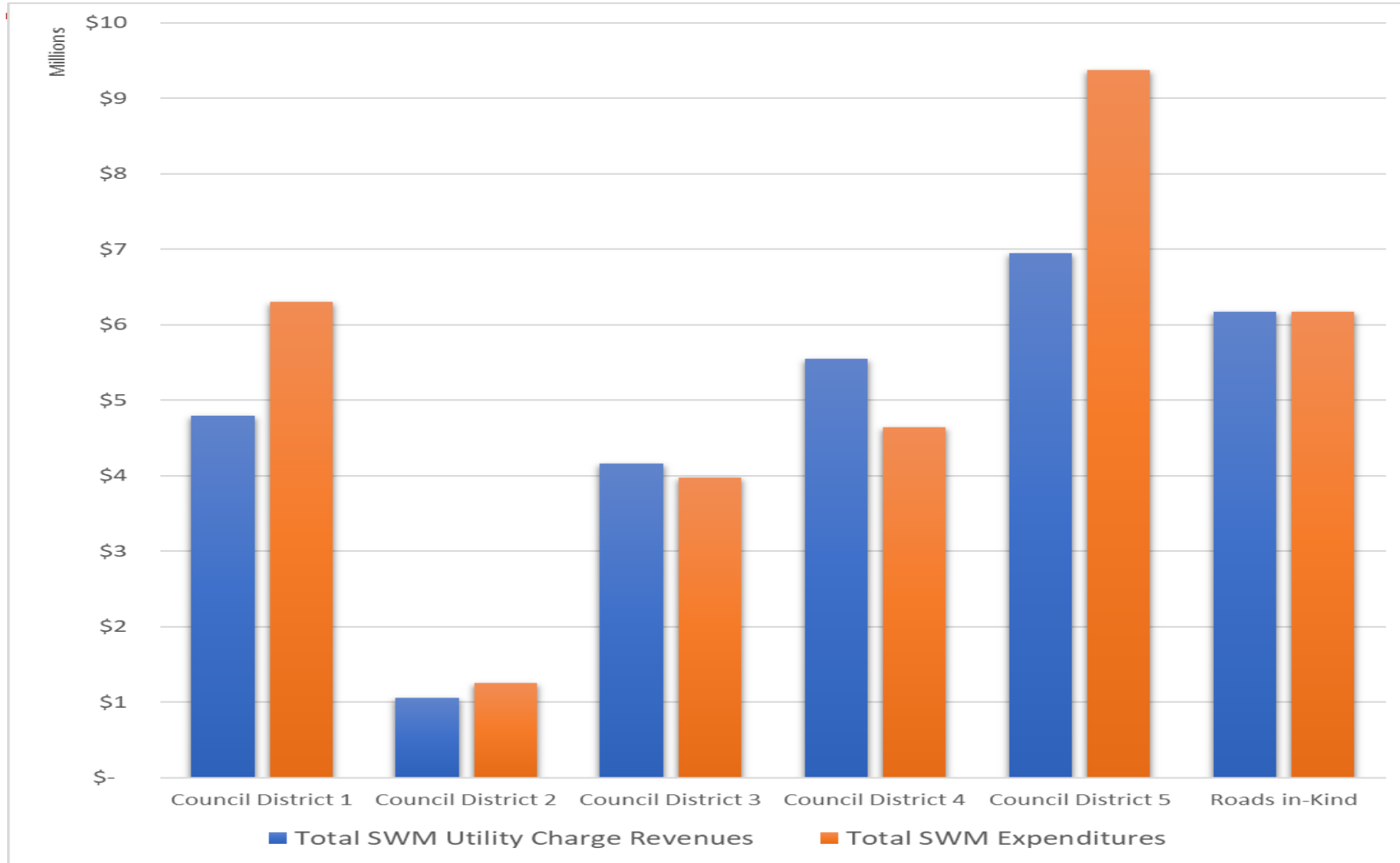
2021 Expenditures	Council District 1	Council District 2	Council District 3	Council District 4	Council District 5	Subtotal	Total Including Road Fund in-Kind Payment of \$6,168,641
Capital Projects Expenditures	\$ 2,933,950	\$ 375,840	\$ 1,521,740	\$ 1,481,470	\$ 4,362,960	\$ 10,675,960	
Non-Capital Services Expenditures	\$ 3,367,900	\$ 872,120	\$ 2,454,230	\$ 3,154,810	\$ 5,012,740	\$ 14,861,800	
Total SWM Expenditures	\$ 6,301,850	\$ 1,247,960	\$ 3,975,970	\$ 4,636,280	\$ 9,375,700	\$ 25,537,760	\$ 31,706,400

2021 SWM Expenditures by Revenue Source

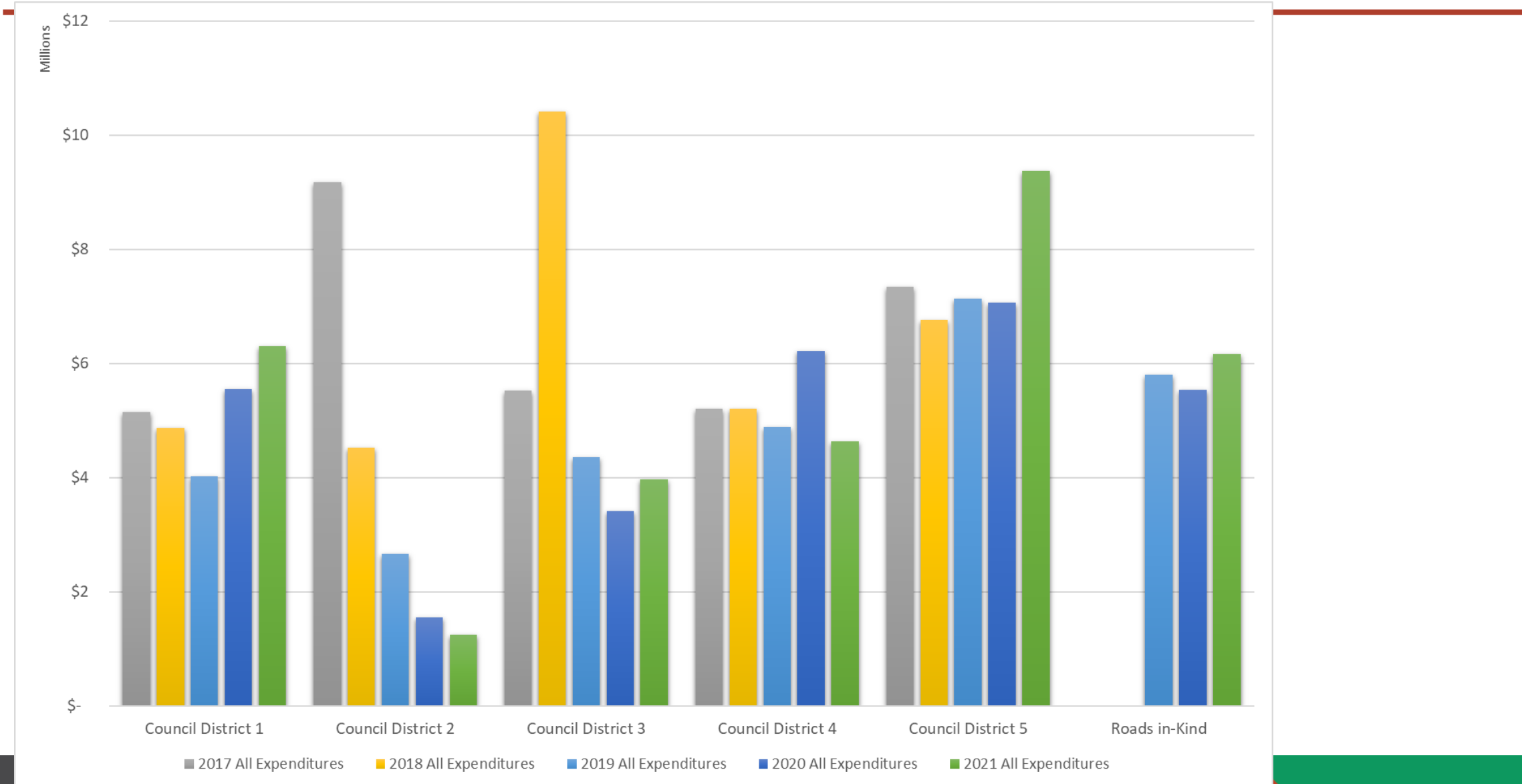


Expenditures by Revenue Source	Council District 1	Council District 2	Council District 3	Council District 4	Council District 5	Subtotal	Total Including Road Fund in-Kind Payment of \$6,168,641
SWM Utility Charges	\$ 5,259,650	\$ 1,157,140	\$ 3,155,020	\$ 3,804,830	\$ 7,314,750	\$ 20,691,390	
SWM Utility Charges - UGA	\$ 27,030	\$ 5,950	\$ 559,180	\$ 540,850	\$ 50,100	\$ 1,183,110	
Grants	\$ 546,940	\$ 34,210	\$ 98,500	\$ 73,120	\$ 1,590,350	\$ 2,343,120	
REET II	\$ -	\$ -	\$ -	\$ -	\$ -	\$ -	
Road Fund	\$ 148,060	\$ 20,560	\$ 44,800	\$ 59,700	\$ 171,420	\$ 444,540	
Other – Shared Costs	\$ 320,170	\$ 30,100	\$ 118,470	\$ 157,780	\$ 249,080	\$ 875,600	
Total	\$ 6,301,850	\$ 1,247,960	\$ 3,975,970	\$ 4,636,280	\$ 9,375,700	\$ 25,537,760	

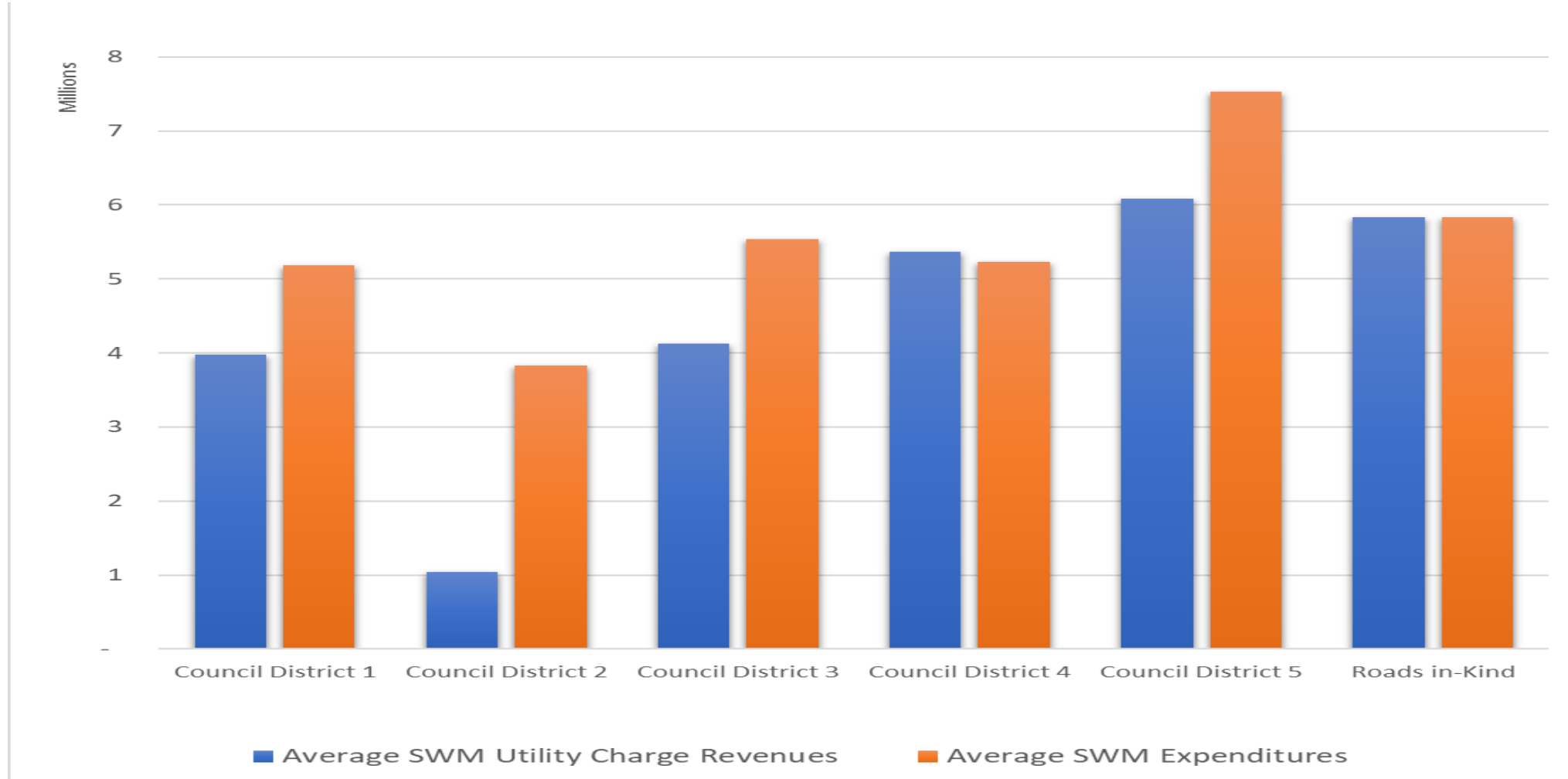
2021 SWM Utility Charge Revenues & Total Expenditures



2017-2021 SWM Expenditures by Council District



2017 – 2021 Average SWM Utility Charge Revenues & Average Total Expenditures



Thank You! – Any Questions?

