

Snohomish County 2024 Comprehensive Plan Update

May 21, 2024

County Council

Planning & Community Development Committee Briefing

Housing Element

Amber Piona, Senior Planner, PDS



Purpose of the Housing Element

- Inventory and analyze existing and projected housing needs and identify capacity of land to meet those needs.
- Include policies for the preservation, improvement, and development of housing.
- Make adequate provisions for the current and projected housing needs all income groups.
- Identify policies and regulations that result in racially disparate impacts, displacement and exclusion in housing.
- Implement policies to address and begin to undo racially disparate impacts, displacement and exclusion.



Three Things You Should Know



Planning for Housing Affordable to All

Housing Need Numbers

Undoing Displacement, Exclusion, and Racially Disparate Impacts



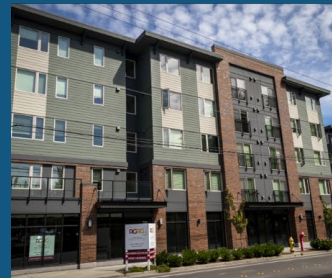
Planning For Housing Affordable to All

- GMA Housing Goal now requires jurisdictions to plan for and accommodate housing affordable to all economic segments of the population.
- There are significant changes to Housing Element requirements with the passage of HB 1220 in 2021.
- The majority of the changes to the housing element are to meet new state law requirements.



Planning For Housing Affordable to All (cont.)

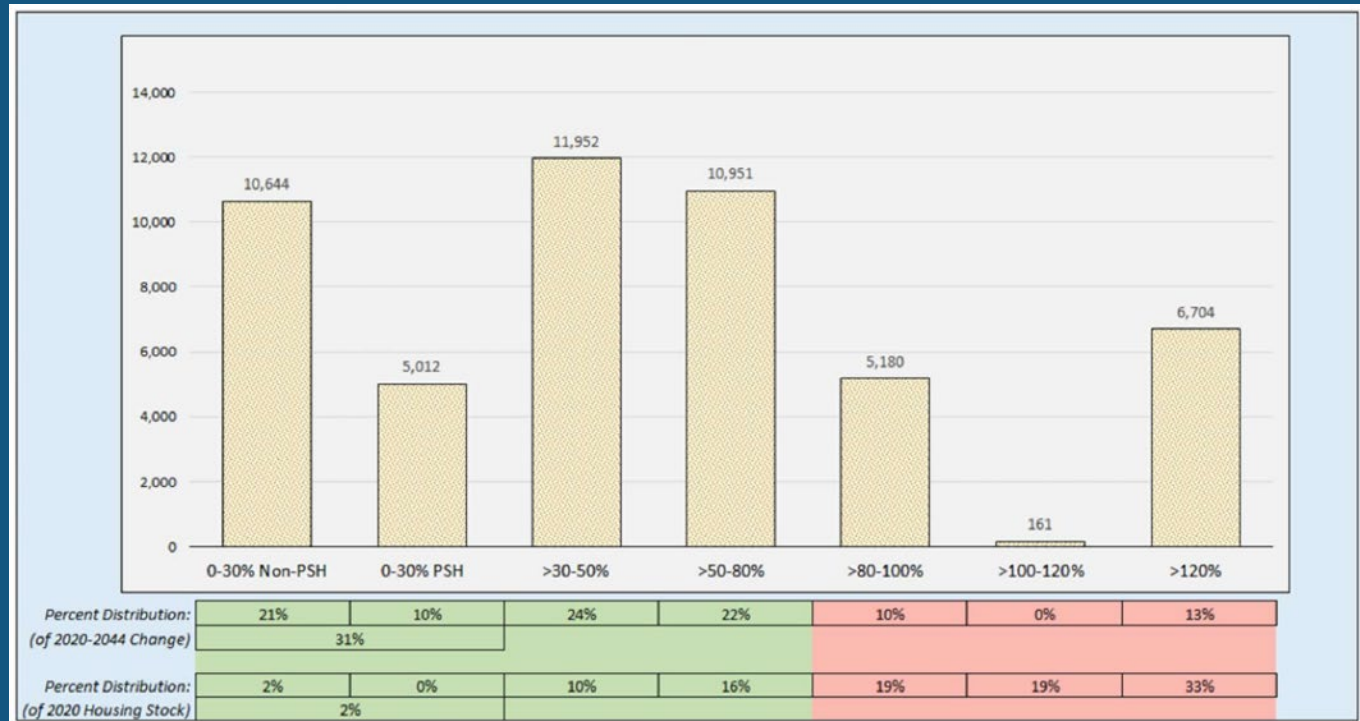
- Moderate Density Housing— policy amendments to include moderate density housing options (duplexes, triplexes, and townhomes).
- Housing for all Income Groups - policy amendments to address housing for moderate-, low-, very low-, and extremely low-income households.
- Barriers to Housing – evaluated in the Housing Needs Analysis (Appendix C to the Comprehensive Plan).



Housing Need Numbers

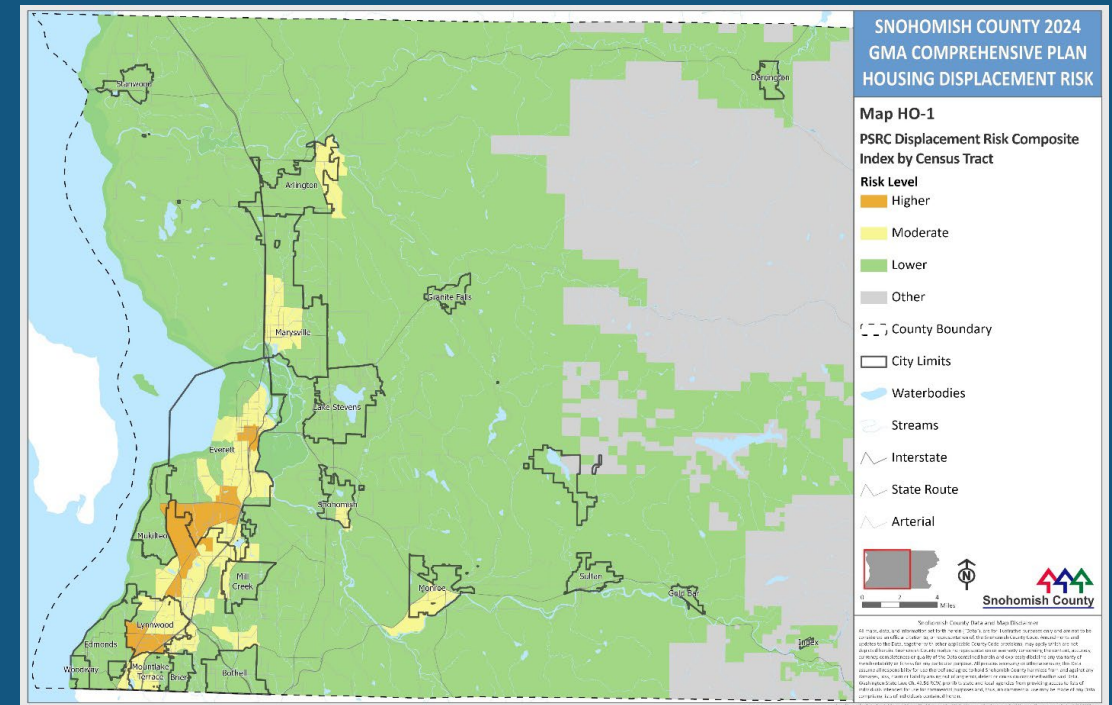
- Compared to the existing housing stock, the unincorporated county will need to focus more on accommodating housing affordable to household making less than 80% of the Area Median Income.
- The county will also need to accommodate 3,128 emergency housing beds by 2024.
- Residential Land Capacity Analysis (part of the Housing Needs Analysis) identifies sufficient capacity of land to accommodate the county need with the executive recommended FLU.

Snohomish County Unincorporated Housing Needs by Income Level
(Area Median Income)



Undoing Displacement, Exclusion and Racially Disparate Impacts

- New requirements in RCW 36.70A.070(2)(e)-(h).
- Analysis of racially disparate impacts, displacement, and exclusion is part of the Housing Needs Analysis.
- New Displacement Risk map in Element.
- New Anti-displacement objective and policies.
- Further policies are proposed within the housing policies for the Urban Core Subarea Element.



Questions

<https://www.snohomishcountywa.gov/5597/2024-Update>