

Amendment 3

Snohomish County **SCSO OFFICES** **Security Expansion**

System Type(s):
- Access Control -

Siemens Industry, Inc.
Building Technologies Security Division
15900 SE Eastgate Way, Ste.200
Bellevue, WA 98008

Presented by:
Paul Pritchard
Paul.Pritchard@Siemens.com
(425) 281-9968

Siemens Industry, Inc.

Date: 21 JUNE 2018

To: Michael Richter & Lolly Huggins – Snohomish County

RE: Snohomish County SCSO Offices – SiPass Access Control

Siemens Industry, Inc. is pleased to provide the following quotation for the above referenced project. This quote is based on **Site Surveys** completed by **Paul Pritchard (Siemens) and Michael Richter (Snohomish County)**. All Snohomish County standard and specifications have been acknowledged.

FINANCIAL SUMMARY

North Precinct.....	\$ 38,500.00
South Precinct.....	\$ 36,900.00
Sultan East Precinct.....	\$ 19,900.00
Monroe East Station.....	\$ 18,500.00
Total Investment:	\$113,800.00

SITUATION

Snohomish County has requested Siemens to assist with an expansion of the SiPass Access Control system to multiple outlining Sherriff Offices. The following four (4) offices will receive this upgrade; North Precinct, South Precinct, Sultan East Precinct, East Station. Each site will receive the necessary components to provide a full functioning access control system, and will be connected to the existing Snohomish County SiPass system.

SCOPE OF WORK

North Precinct (4-Card Readers):

Siemens shall furnish a 'turnkey' installation for a SiPass Access Control System upgrades at the Snohomish County North Precinct Sheriff's Office.

- **System Software:** Expansion of existing Snohomish County current infrastructure.
- **Labor: Day shift** estimated. Prior to project start, Siemens will provide a project schedule to Snohomish County for approval.

**Snohomish County SCSO Offices
Siemens Security / Snohomish County**

Siemens Industry, Inc.

North Precinct Cont'

- **Bill of Materials**
 - (1) SiPass Snohomish County **8-Door** Panel consisting of: (1) 36x36x8 Locking Enclosure, (1) ACC, (1) 8-door controller, (2) power supplies with fire alarm input, (1) SiPass Software expansion, (3) 12V backup batteries
 - (4) Access Control Door Packages consisting of: Card Readers, Request-to-Exit sensors, Door position sensors, and electrified locking hardware
 - (2) NEW Electrified locking hardware with installation
 - (2) electric strikes currently installed
 - (Misc) Cable, Conduit, Connectors, Lift Rental
- **Option(s)**
 - OPTION DOOR #1 = Meeting Room Training
 - One (1) Additional Card reader Door Packages consisting of: Siemens 2-Door Access Module, Card Reader, Request-to-Exit sensor, Door position sensor, and electrified locking hardware.....**\$5,000.00**
See site floor plan for option #1 door location
 - OPTION DOOR #2 = Security Sally Port
 - One (1) Additional Card reader Door Packages consisting of: Card Reader, Request-to-Exit sensor, Door position sensor, and electrified locking hardware, lift rental, beam clamps, conduit.....**\$6,500.00**
See site floor plan for option #2 door location

South Precinct (4-Card Readers):

Siemens shall furnish a 'turnkey' installation for a SiPass Access Control System upgrades at the Snohomish County South Precinct Sheriff's Office.

- **System Software:** Expansion of existing Snohomish county current infrastructure.
- **Labor:** *Day shift* estimated. Prior to project start, Siemens will provide a project schedule to Snohomish County for approval.
- **Bill of Materials**
 - (1) SiPass Snohomish County **8-Door** Panel consisting of: (1) 36x36x8 Locking Enclosure, (1) ACC, (1) 8-door controller, (2) power supplies with fire alarm input, (1) SiPass Software expansion, (3) 12V backup batteries
 - (4) Access Control Door Packages consisting of: Card Readers, Request-to-Exit sensors, Door position sensors, and electrified locking hardware
 - (4) NEW Electrified locking hardware with installation
 - (Misc) Cable, Conduit, Connectors, Lift Rental

Siemens Industry, Inc.

Sultan East Precinct (2-Card Readers):

Siemens shall furnish a 'turnkey' installation for a SiPass Access Control System upgrades at the Snohomish County East Precinct Sheriff's Office.

- **System Software:** Expansion of existing Snohomish County current infrastructure.
- **Labor:** *Day shift* estimated. Prior to project start, Siemens will provide a project schedule to Snohomish County for approval.
- **Bill of Materials**
 - (1) SiPass Snohomish County **4-Door** Panel consisting of: (1) 36x30x8 Locking Enclosure, (1) ACC, (1) 2-door controller, (2) power supplies with fire alarm input, (1) SiPass Software expansion, (3) 12V backup batteries
 - (2) Access Control Door Packages consisting of: Card Readers, Request-to-Exit sensors, Door position sensors, and electrified locking hardware
 - (2) NEW Electrified locking hardware with installation
 - (Misc) Cable, Conduit, Connectors

East Station - Monroe (1-Card Reader):

Siemens shall furnish a 'turnkey' installation for a SiPass Access Control System upgrades at the Snohomish County East Station Precinct Sheriff's Office.

- **System Software:** Expansion of existing Snohomish County current infrastructure.
- **Labor:** *Day shift* estimated. Prior to project start, Siemens will provide a project schedule to Snohomish County for approval.
- **Bill of Materials**
 - (1) SiPass Snohomish County **4-Door** Panel consisting of: (1) 36x30x8 Locking Enclosure, (1) ACC, (1) 2-door controllers, (2) power supplies with fire alarm input, (1) SiPass Software expansion, (3) 12V backup batteries
 - (1) Access Control Door Packages consisting of: Card Reader, Request-to-Exit sensor, Door position sensor, and electrified locking hardware
 - (1) NEW Electrified locking hardware with installation
 - (Misc) Cable, Conduit, Connectors

Siemens Industry, Inc.

CLARIFICATIONS

1. Turnkey Installation = System components, system design, engineering services, field technician startup, system testing and commissioning.
2. ACAD drawings: Siemens will add required engineered project drawings as applicable for this project. It is assumed Siemens will continue drawings from last known revision. Drawings will follow current drawing format as specified by Snohomish County.
3. All Siemens proposed SiPass panels will be pre-wired specifically to Snohomish County standards. Including individual cable labeling and specific wire termination connectors.
4. Siemens assumed to combine all proposed buildings as a single project. Weekly progress meetings are included in project pricing.
5. Pricing includes project management for the duration of the tentative project schedule.
6. Pricing includes one (1) year warranty
7. All project required 120VAC circuits and connections provided by Snohomish County.
8. Security panel network connectivity provided by Snohomish County.
9. *Day Shift Work* is assumed to be completed during normal business hours Monday – Friday (7am-5pm). *Night Shift* work is assumed to be completed during off business hours Monday – Friday (6pm-2am). If night shift is required, additional cost will apply.
10. Siemens to provide electrical permit and coordinate inspection with AHJ.

EXCLUSIONS

1. Cutting, painting and patching.
2. Asbestos abatement or containment
3. Fire Alarm system interface, if required.
4. Provide by others = Network connectivity and identification of appropriate 120VAC circuit(s).
5. Performance or Payment bonds.
6. Costs associated with schedule acceleration, project meetings, multiple trips onsite due to incompleteness of others, or multiple unplanned phases.
7. Washington State Sales Tax.

This proposal is based on the Siemens Industry, Inc. Standard Terms and Conditions and the "Scope of work" and is to be considered part of this proposal. Proposal is valid for thirty (30) days from the delivery date. Payment is due within 30 days of invoice date.

Payment Terms: 5% mobilization in advance, progress payments, NET30

Please contact me immediately if you have any questions or concerns regarding this proposal. If this proposal is acceptable, please return a signed copy to our office via mail or fax. **This will serve as our notice to proceed with the work described herein.**

Proposal accepted by:

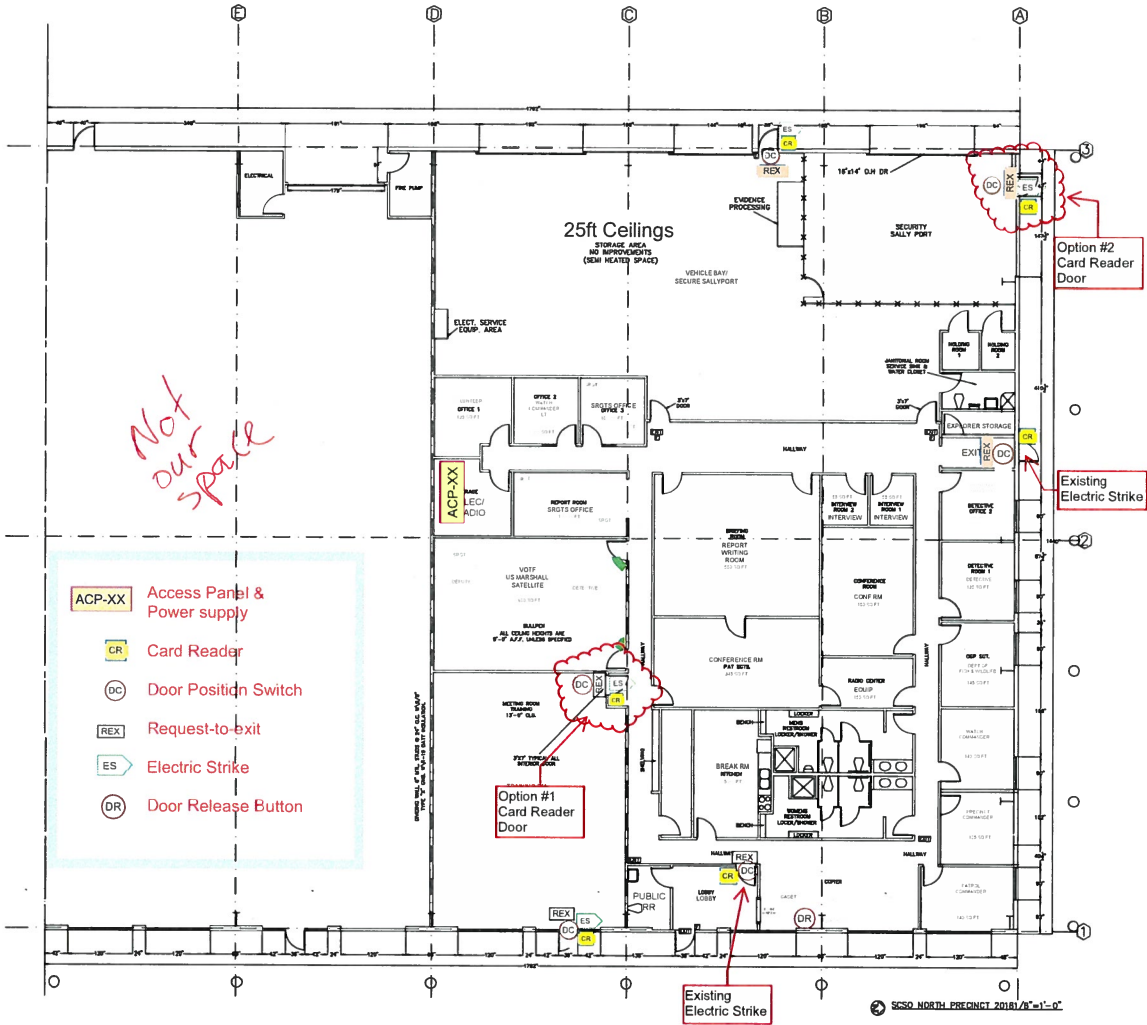
Name: _____
Company: KEN KLEIN
Title: Executive Director

 8/19/18
Signature Date

Proposal submitted by:

Paul Pritchard
Sales Executive
Siemens Industry, Inc.

Paul Pritchard 6/21/2018
Signature Date



Not our space

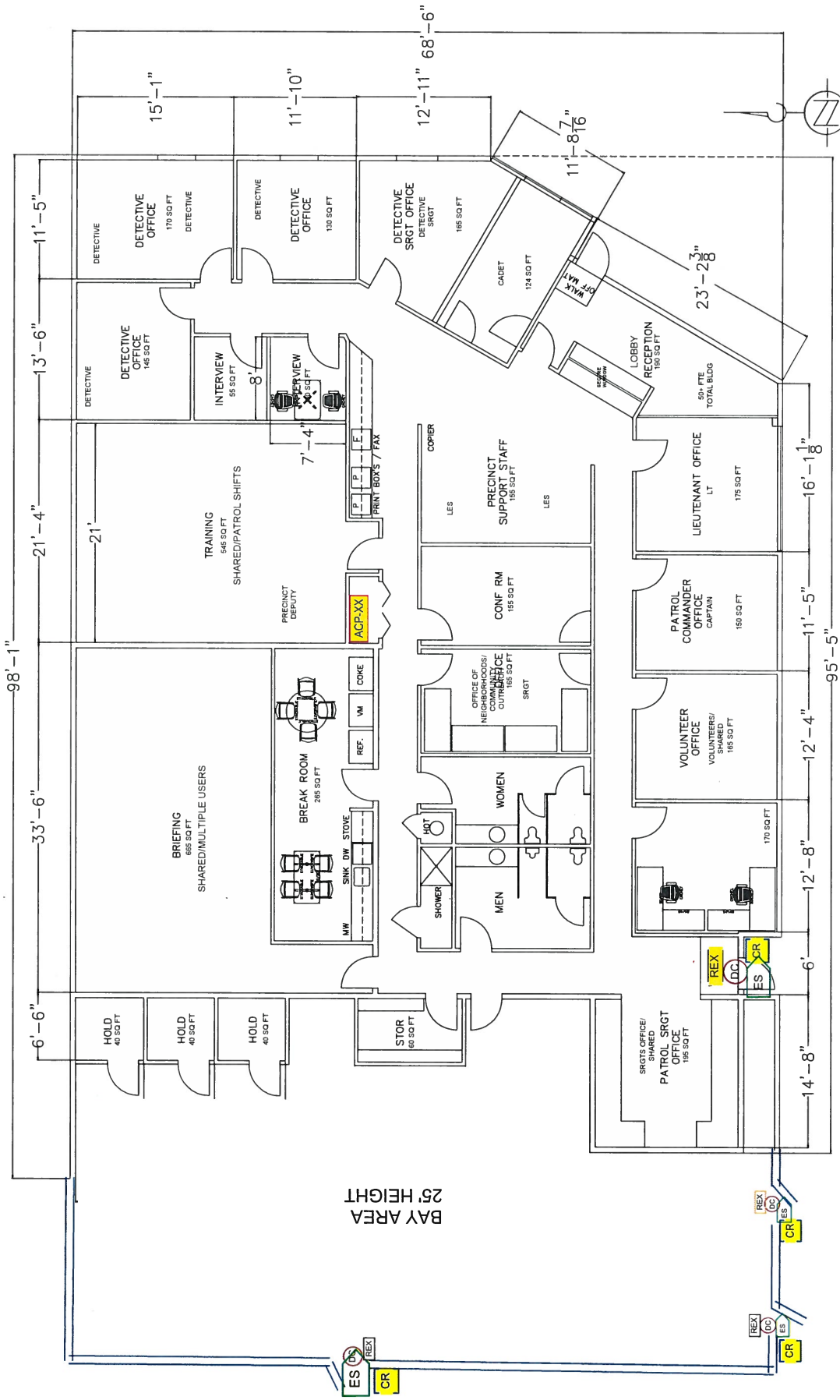
- ACP-XX Access Panel & Power supply
- CR Card Reader
- DC Door Position Switch
- REX Request-to-exit
- ES Electric Strike
- DR Door Release Button

Option #1 Card Reader Door

Option #2 Card Reader Door

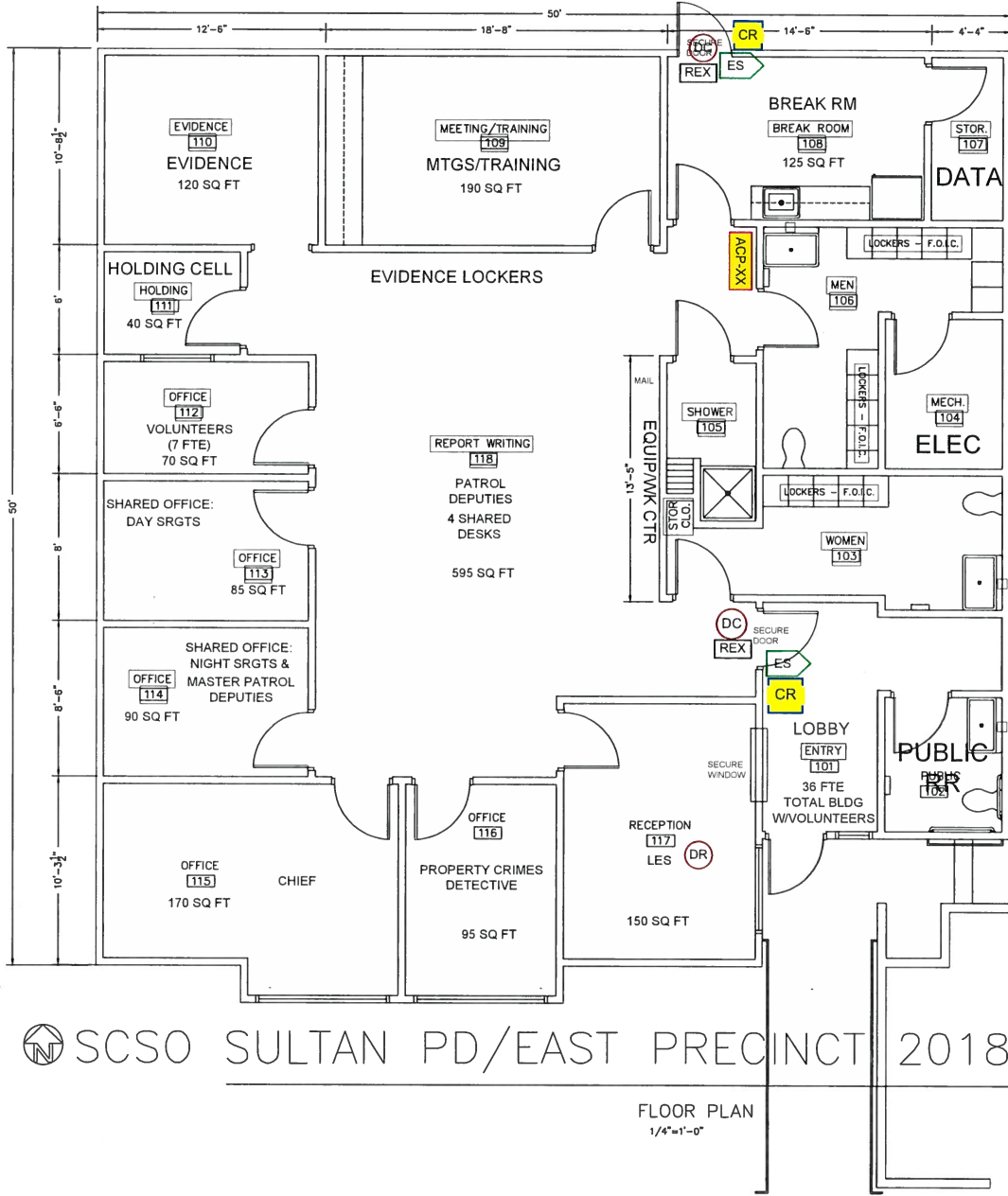
Existing Electric Strike

Existing Electric Strike



SCSO SOUTH PRECINCT 2018
 3/32" = 1'-0"

BAY AREA
 25' HEIGHT



SCSO SULTAN PD/EAST PRECINCT 2018

FLOOR PLAN
1/4"=1'-0"



East Station – Monroe
14000 179th Ave SE

