

2025 Community Budget Forum

SNOHOMISH COUNTY

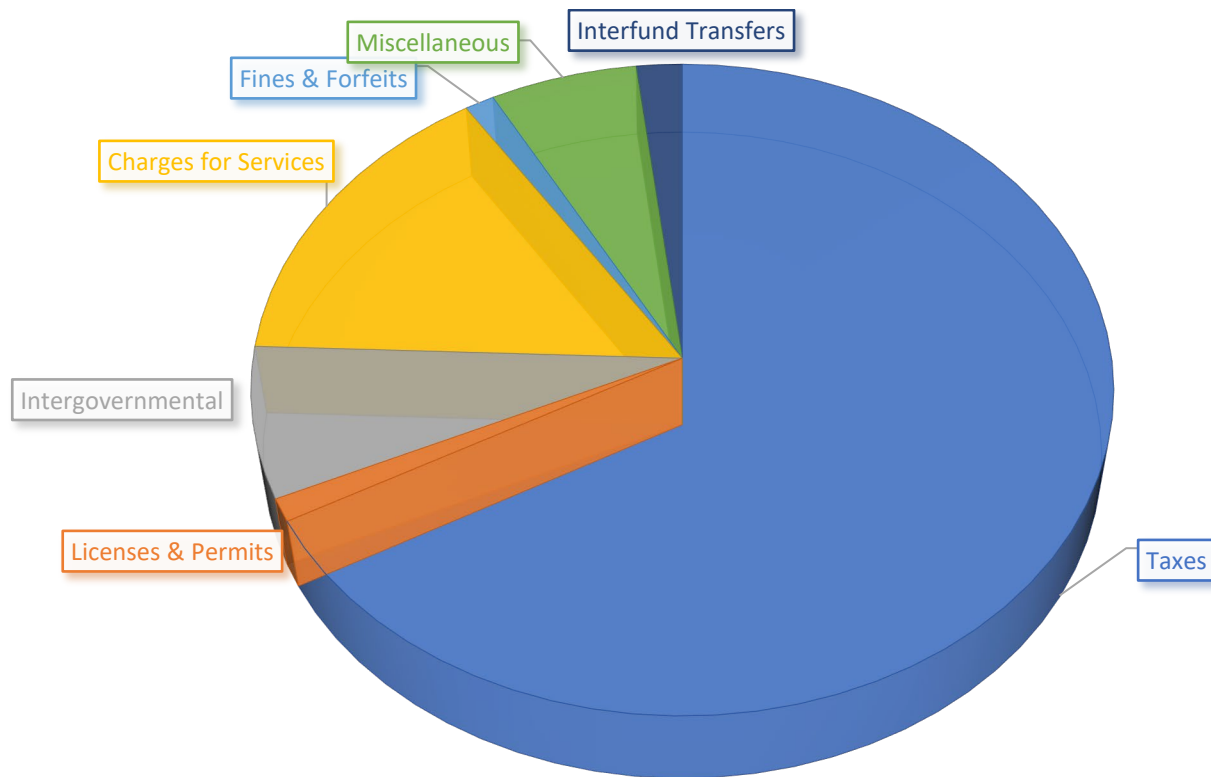
Snohomish County Council

Overview of 2025-2026 Budget Mid-Biennium Review
and Modification

October 16, 2025

General Fund Revenue Sources

SNOHOMISH COUNTY



Property Tax

SNOHOMISH COUNTY



County
General Uses
\$.0613

County
Roads
\$.0421

Schools
\$.6288

Cities and
Towns
\$.0791

Fire
Districts
\$.1312

Libraries, Hospitals,
Ports & Parks
\$.0575

Sales Tax

SNOHOMISH COUNTY

For every **\$100** spent on qualified retail purchases, the average sales tax collected is



Who gets what?

State of Washington.....	\$6.50
Cities or County	\$1.00
Cities or County for	
Criminal Justice	\$0.10
County for Mental Health	\$0.10
County for Emergency Radio	
System	\$0.10
County for Homelessness	\$0.10
Community Transit /	
Everett Transit	\$1.20
Regional Transit Authority	\$1.40
TOTAL	\$10.50



Mid-Biennium Review & Modification

SNOHOMISH COUNTY

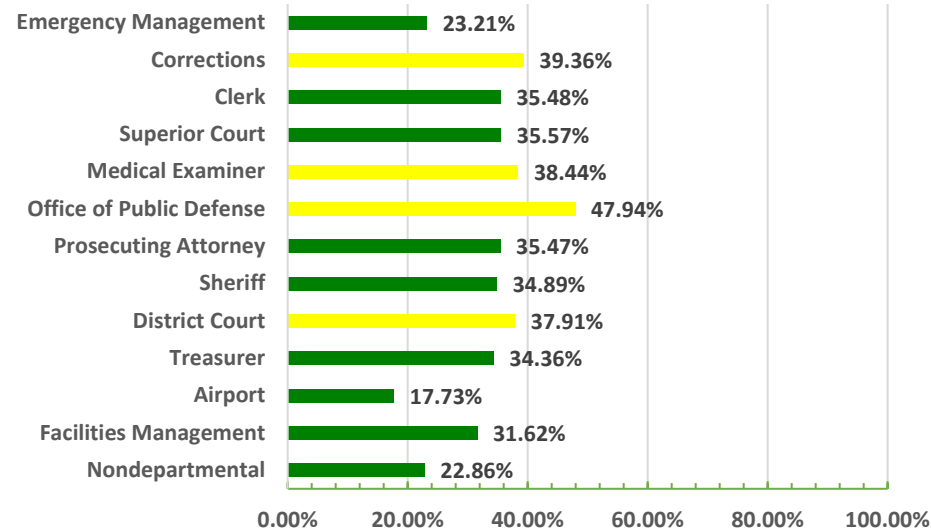
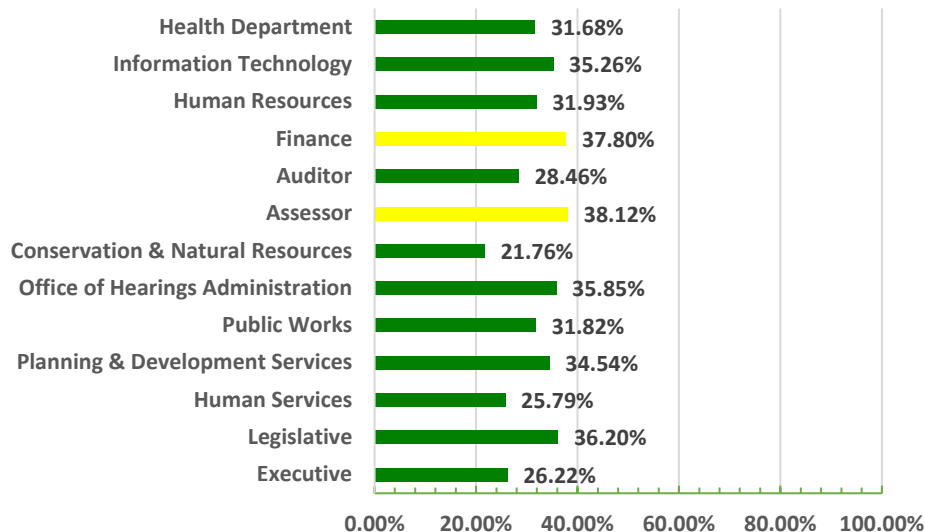
- **Snohomish County Code 4.26.117 calls for a mid-biennium review and modification**
- **Per code, proposed modifications from the County Executive limited**
- **Operational changes within departments not considered during this process**
- **Council will not be adopting a new budget, but modifying the existing biennium budget for the remainder of the biennium**

% of Biennial Budget Used

(for illustrative purposes only)

SNOHOMISH COUNTY

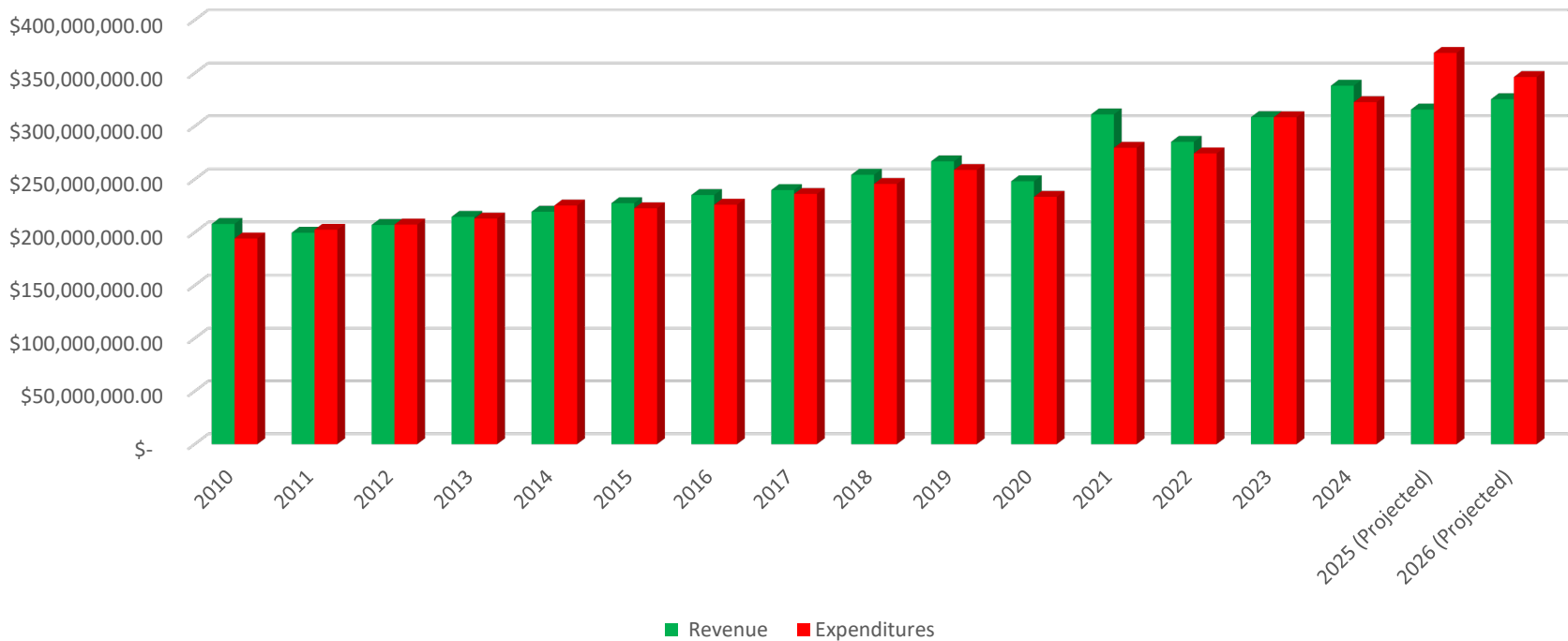
An equal monthly spend down of budget appropriations is 37.5% of overall appropriation by September 30, 2025



General Fund History

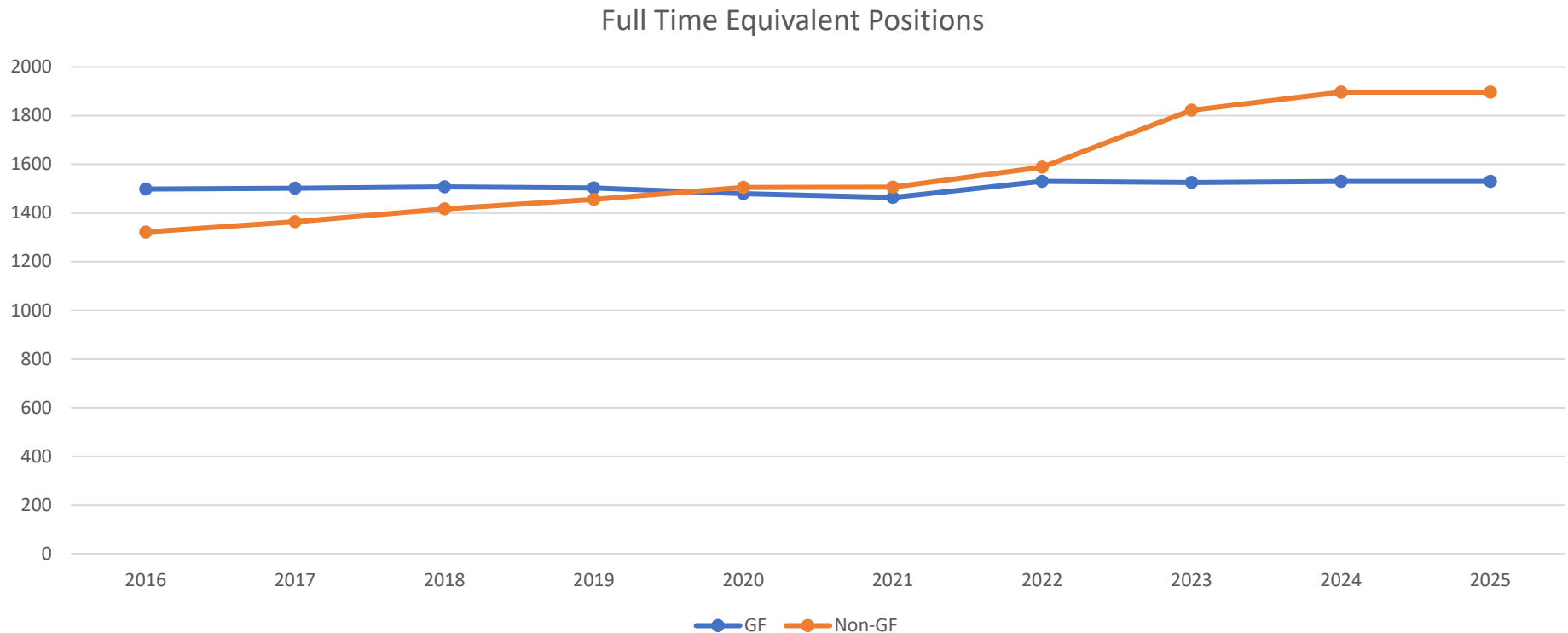
SNOHOMISH COUNTY

Revenue vs Expenditures



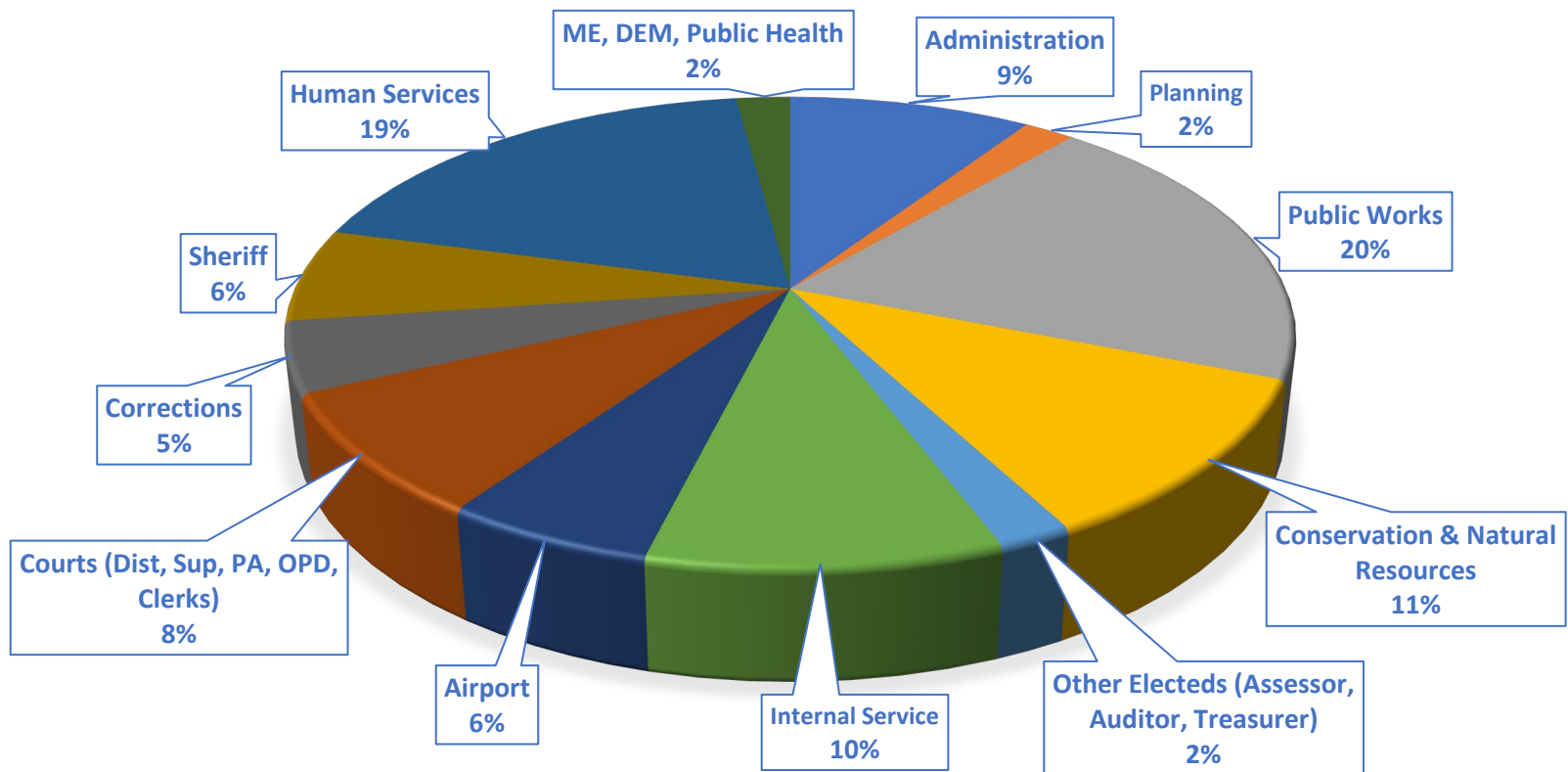
Full Time Equivalent Positions

SNOHOMISH COUNTY



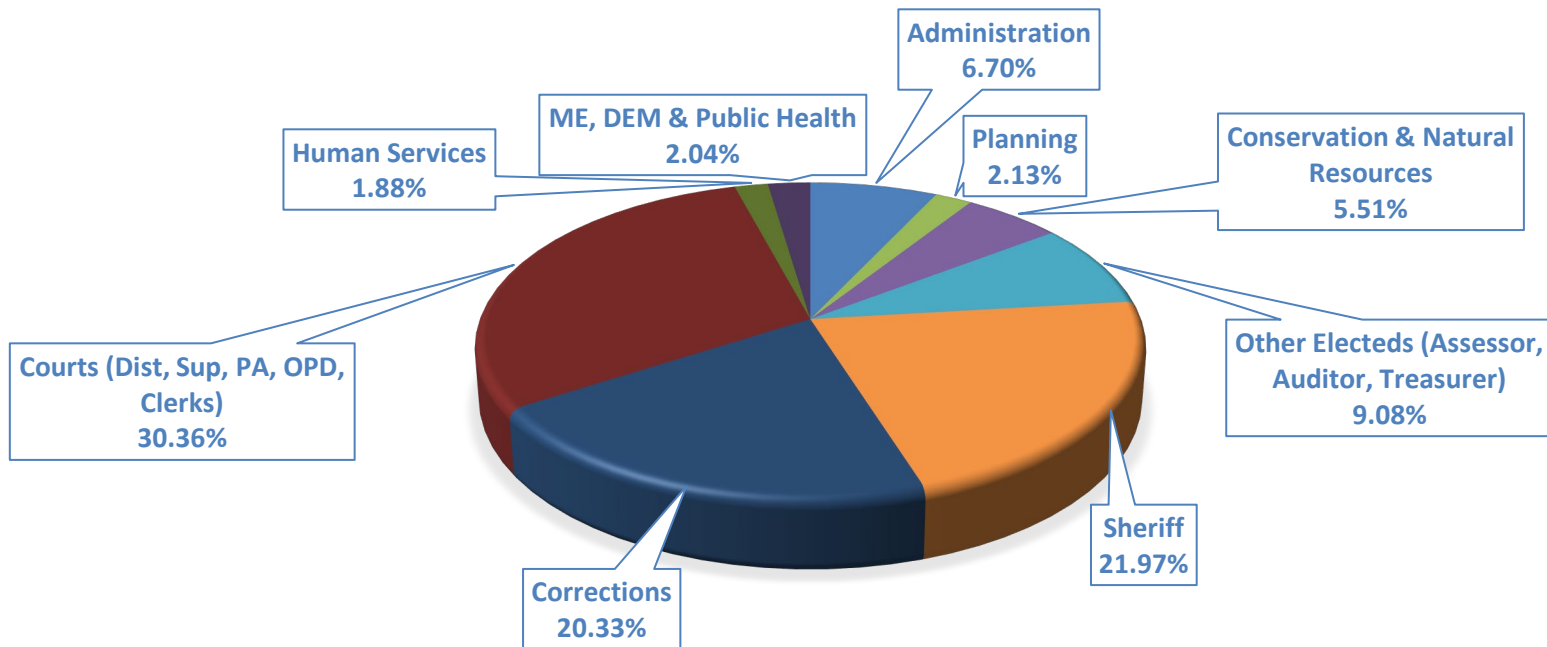
County-Wide Budget

SNOHOMISH COUNTY



General Fund Budget

SNOHOMISH COUNTY



What Are Your Priorities

SNOHOMISH COUNTY

Make Yourself Heard

Send an E-Mail

Contact.Council@snoco.org

Send a Letter

**Snohomish County Council
3000 Rockefeller Ave. M/S 609
Everett, Washington 98201**