

Approved: 4/08/2026

Effective: 4/27/2026

SNOHOMISH COUNTY COUNCIL
Snohomish County, Washington

ORDINANCE NO. 26-013

ADOPTING CHANGES IN VOTING PRECINCTS PURSUANT TO
RCW 29A.16.040, RCW 29A.16.050 AND CHAPTER 2.47 SCC; AMENDING
CHAPTER 2.47 SNOHOMISH COUNTY CODE

WHEREAS, SCC 2.47.040(2) provides that the County Auditor may temporarily adjust precinct boundaries to maintain conformance with applicable state laws, and that such revisions to voting precincts must be submitted to the County Council for adoption by ordinance no later than May 1 of each year; and

WHEREAS, Exhibit A, attached hereto, sets forth the precinct changes made by the Auditor since April 16, 2025, including those temporarily adjusted to maintain conformance with applicable state law, resulting in a total of 875 voting precincts in Snohomish County. Exhibit A details 13 changes to precincts due to growth in the number of voters in a precinct and 8 changes to precincts due to city annexations;

NOW, THEREFORE, BE IT ORDAINED:

Section 1. The Council finds that pursuant to the authority of SCC 2.47.040(2), the Auditor made those adjustments to precinct boundaries since April 16, 2025, that are set forth in Exhibit A, attached hereto and incorporated herein by this reference.

Section 2. Snohomish County Code Section 2.47.030, last amended by Ordinance 25-026 on April 16, 2025, is amended to read:

2.47.030 Precincts adopted.

(1) The adopted voting precinct boundaries for the county are those set forth in the precinct map books maintained on file with the clerk of the council and the Snohomish County auditor's office, subject to revision from time to time in accordance with SCC 2.47.040.

(2) To implement boundary changes resulting from redistricting following the federal decennial census and to implement changes that are necessary to maintain conformance with applicable laws in accordance with SCC 2.47.040, the precinct boundaries adopted by subsection (1) are revised cumulatively as set forth in the following documents:


- (a) Exhibit A attached to Ordinance 02-016.
- (b) Exhibit A attached to Ordinance 03-046.
- (c) Exhibit A attached to Ordinance 04-054.
- (d) Exhibit A attached to Ordinance 05-037.
- (e) Exhibit A attached to Ordinance 06-035.

- 1 (f) Exhibit A attached to Ordinance 07-028.
- 2 (g) Exhibit A attached to Ordinance 08-061.
- 3 (h) Exhibit A attached to Ordinance 09-021.
- 4 (i) Exhibit A attached to Ordinance 10-015.
- 5 (j) Exhibit A attached to Ordinance 11-012.
- 6 (k) Exhibit A attached to Ordinance 12-016.
- 7 (l) Exhibit A attached to Ordinance 13- 019.
- 8 (m) Exhibit A attached to Ordinance 14-014.
- 9 (n) Exhibit A attached to Ordinance 15-018.
- 10 (o) Exhibit A attached to Ordinance 16-012.
- 11 (p) Exhibit A attached to Ordinance 17-012.
- 12 (q) Exhibit A attached to Ordinance 18-024.
- 13 (r) Exhibit A attached to Ordinance 19-011.
- 14 (s) Exhibit A attached to Ordinance 20-014.
- 15 (t) Exhibit A attached to Ordinance 21-016.
- 16 (u) Exhibit A attached to Ordinance 22-013.
- 17 (v) Exhibit A attached to Ordinance 23-021.
- 18 (w) Exhibit A attached to Ordinance 23-139.
- 19 (x) Exhibit A attached to Ordinance 25-026.
- 20 (y) Exhibit A attached to Ordinance 26-013.


21
 22 Copies of these documents are on file with the clerk of the council and the Snohomish
 23 County auditor’s office.

24
 25 PASSED this 8th day of April, 2026.

26
 27 SNOHOMISH COUNTY COUNCIL
 28 Snohomish County, Washington


29
 30 
 31 _____
 32 Chairperson

33 ATTEST:

34 
 35 _____
 36 Deputy Clerk of the Council

- 37 (X) APPROVED
- 38 () EMERGENCY
- 39 () VETOED

40
 41 DATE: April 17, 2026

42
 43 
 44 _____
 45 County Executive

46 ATTEST:

47 Melissa Geraghty
 48 Approved as to form only:

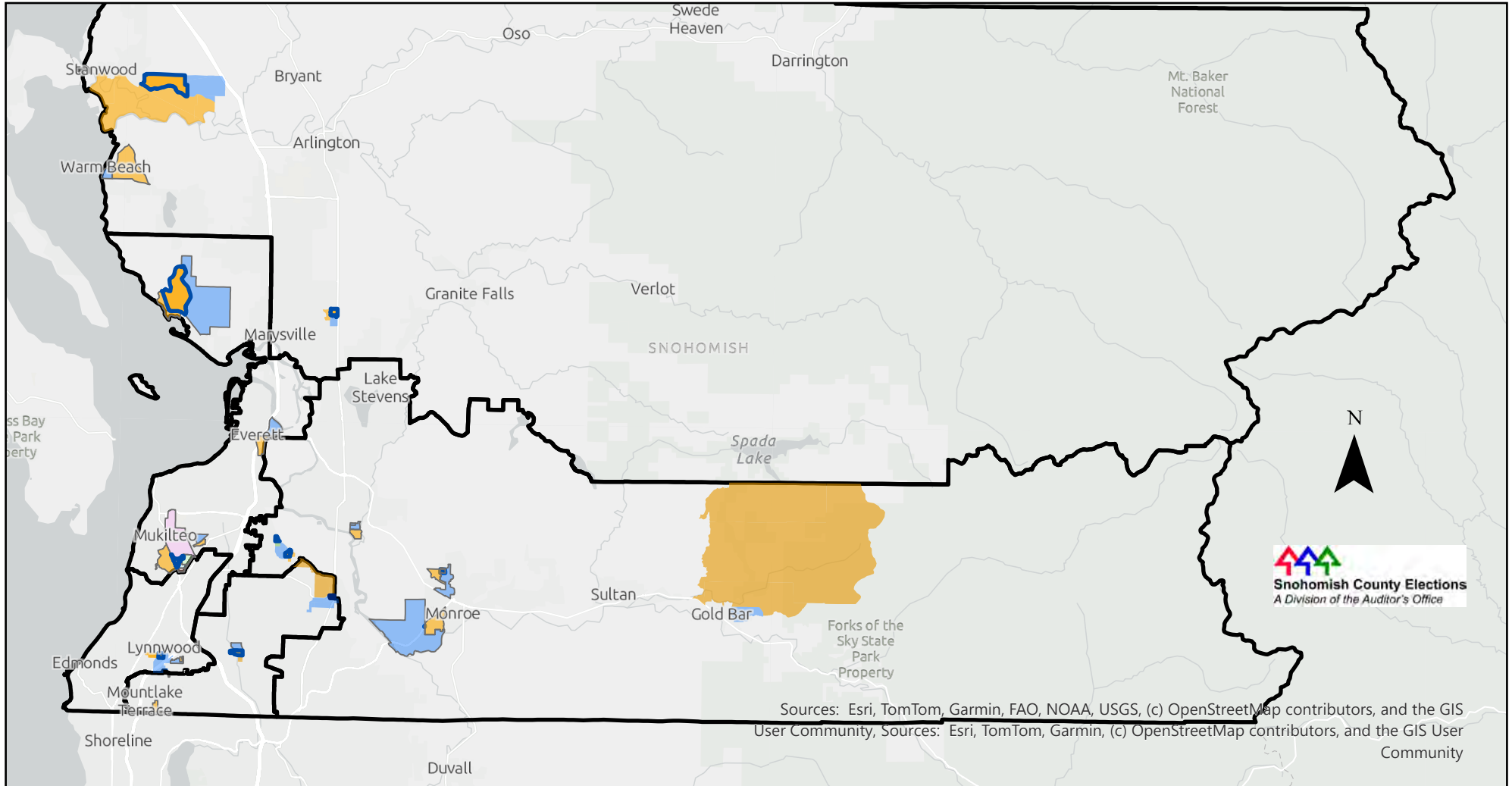
49 Downs, Lyndsey Digitally signed by Downs,
Lyndsey
Date: 2026.03.10 16:22:36 -0700
 50 Deputy Prosecuting Attorney

Precinct Changes 2026



Snohomish County Auditor
Garth Fell

Precinct Changes Overview



Statistics for 2026 Precinct Adjustments

Changes to precincts to reduce voter counts	13
Changes to precincts due to annexations	8
Total number of precinct changes	21
Total number of precincts involved in changes	38
Last year's number of precincts	869
New Precincts created	6
Precincts dissolved	0
New total number of precincts	875

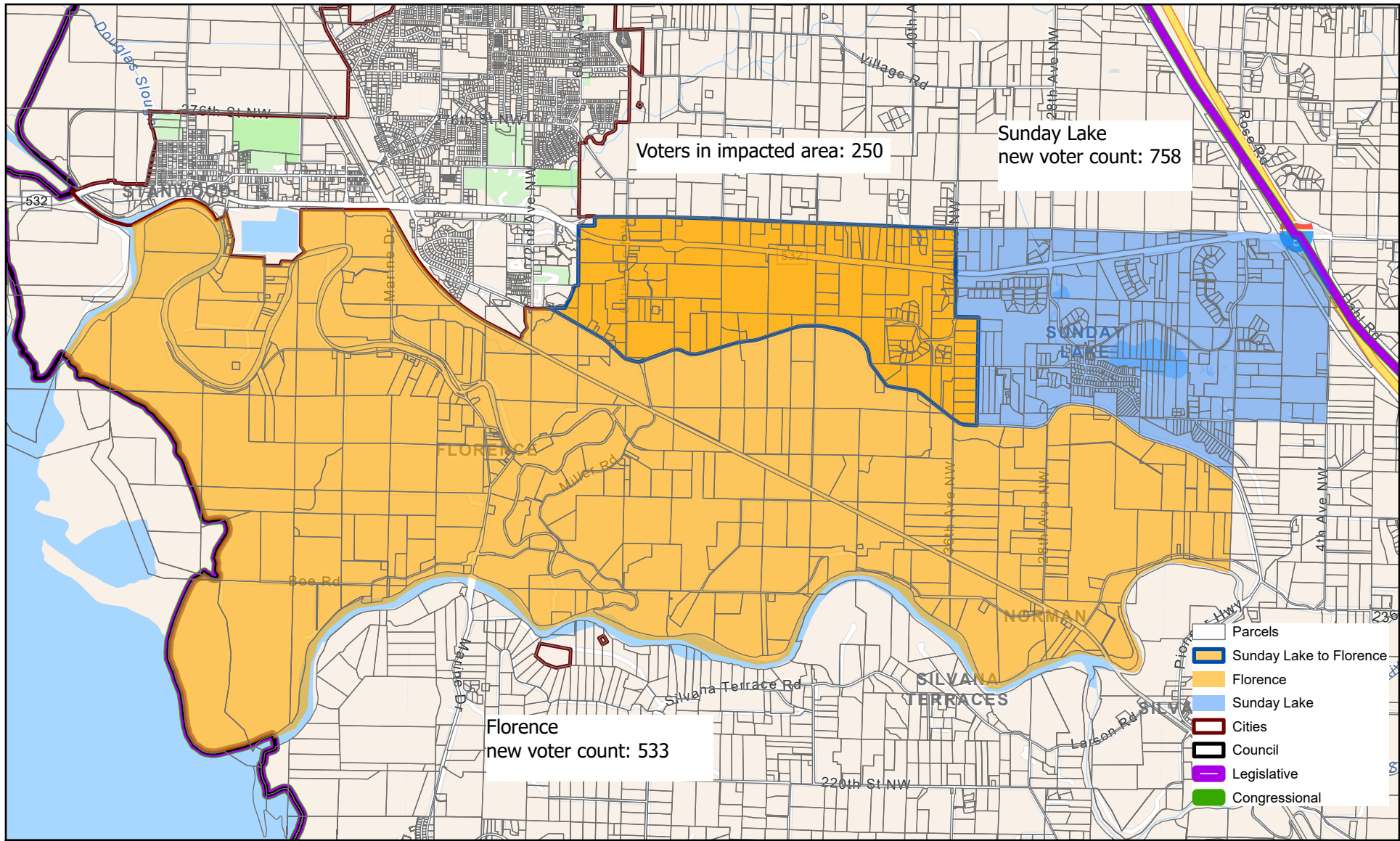
County Council District Precinct Count

Districts	2025	2026	Estimated Voters
County Council District 1	200	201	119,482
County Council District 2	162	164	99,305
County Council District 3	159	161	103,078
County Council District 4	157	157	100,546
County Council District 5	191	192	116,242
Totals	869	875	538,653

Map #	From Precinct	To Precinct	Council District	Ordinance	Name of Boundary Change
Changes to reduce voter counts					
1	Sunday Lake	Florence		1	
2	Port Susan	Warm Beach (new)		1	
3	Marysville 12	Marysville 55		1	
4	Tulalip 3	Tulalip 6		2	
5	Everett 17	Everett 99 (new)		2	
6	Everett 83	Everett 100 (new)		2	
7	Lynnwood 4	Lynnwood 36		3	
8	North Creek	Thrashers		4	
9	View	Merwin		4	
10	Marsh	Pointe, Fransson		5	
11	Snohomish 5	Snohomish 12 (new)		5	
12	May Creek	Isabel (new)		5	

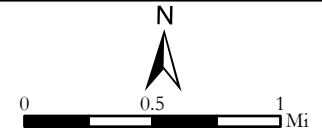
Changes due to annexation

13	Pine Grove, Crossing, York, and Hiway	Mukilteo 20	2	Ord 1513	Mukilteo Phase 1
14	Parkway	Lynnwood 37 (new)	3	Ord 3488	New Middle School
15	Hunt	Mountlake Terrace 3	4	Ord 2896	48 th Ave w
16	Nottingham	Monroe 17	5	Ord 013/2025	Monroe-30
17	Park Place	Monroe 6	5	Ord 022/2025	Monroe Conner



Sunday Lake to Florence

To Reduce Voter Count

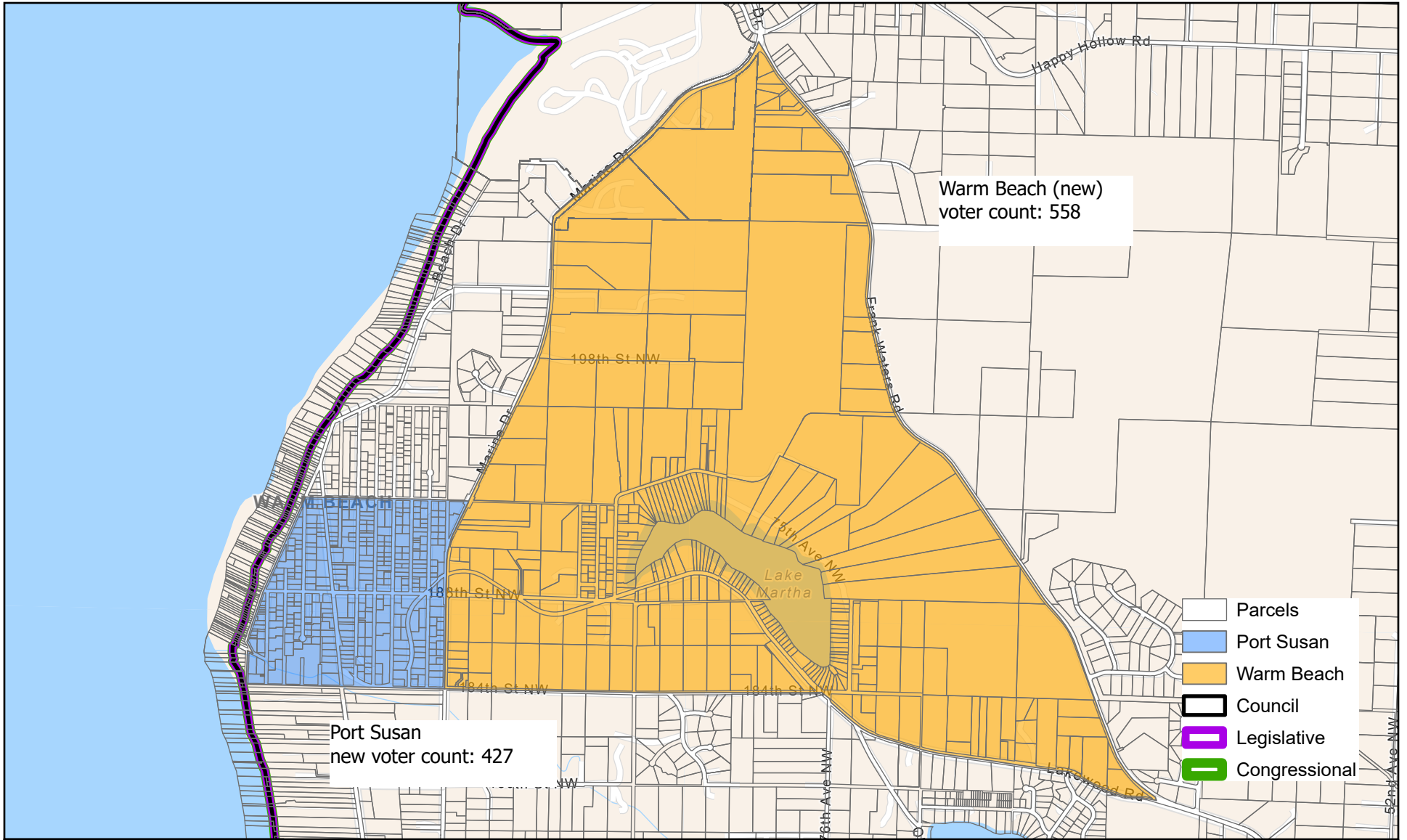


County Council District 1

2026

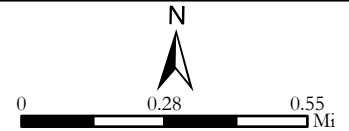
Map 1

credits: Esri, UGIAR, USGS, Sources: Esri, TomTom, Garmin, FWA, NOAA, USGS, (c) OpenStreetMap contributors, and the GIS User Community ; Coordinate System: NAD 1983 StatePlane Washington North FIPS 4601 Feet



Port Susan to Warm Beach (new)

To Reduce Voter Count

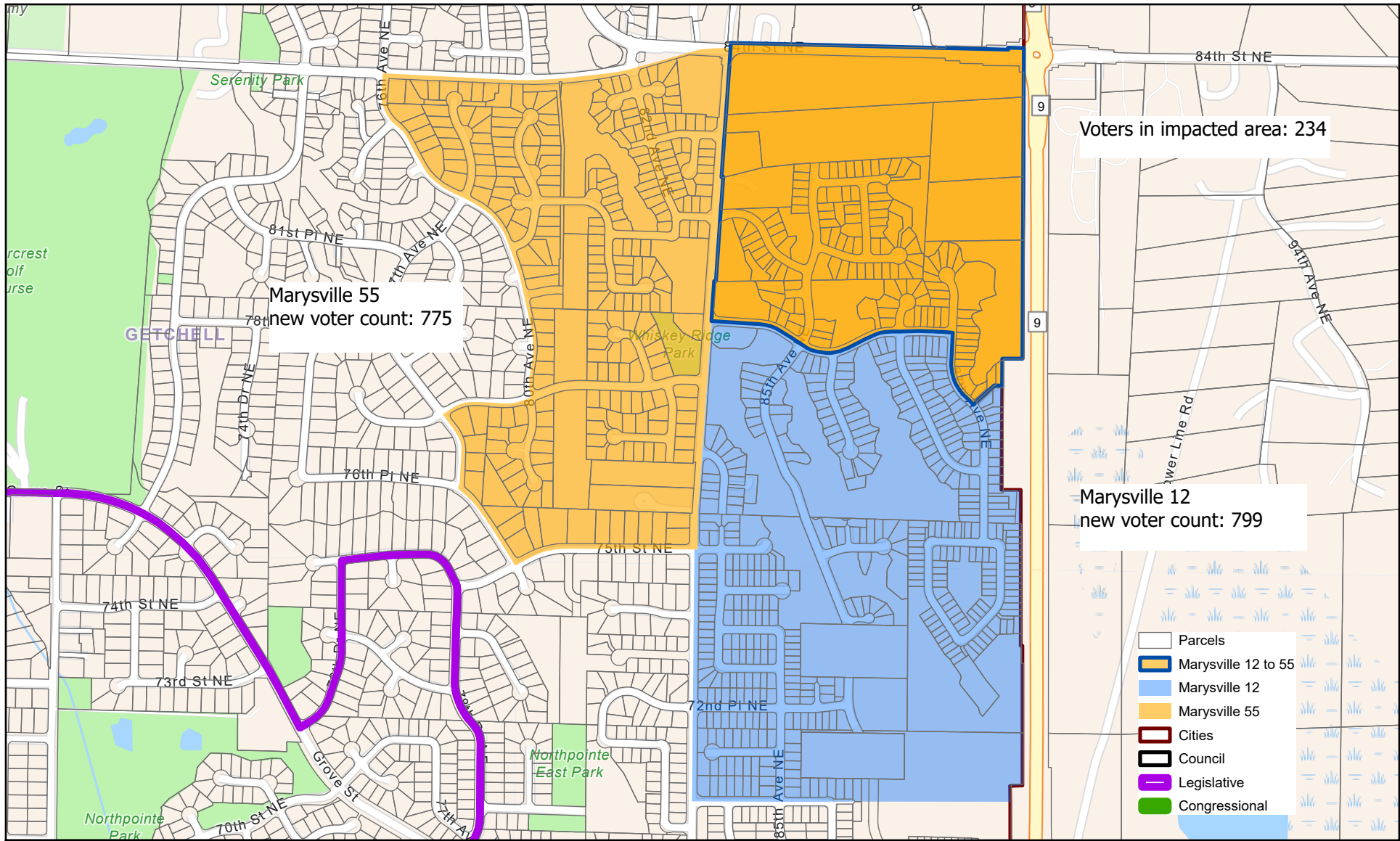


County Council District 1

2026

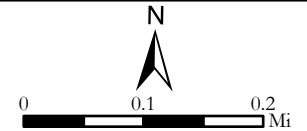
Map 2

credits: Esri, CGIAR, USGS, Sources: Esri, TomTom, Garmin, FWA, NOAA, USGS, (c) OpenStreetMap contributors, and the GIS User Community ; Coordinate System: NAD 1983 StatePlane Washington North FIPS 4601 Feet



Marysville 12 to Marysville 55

To Reduce Voter Count

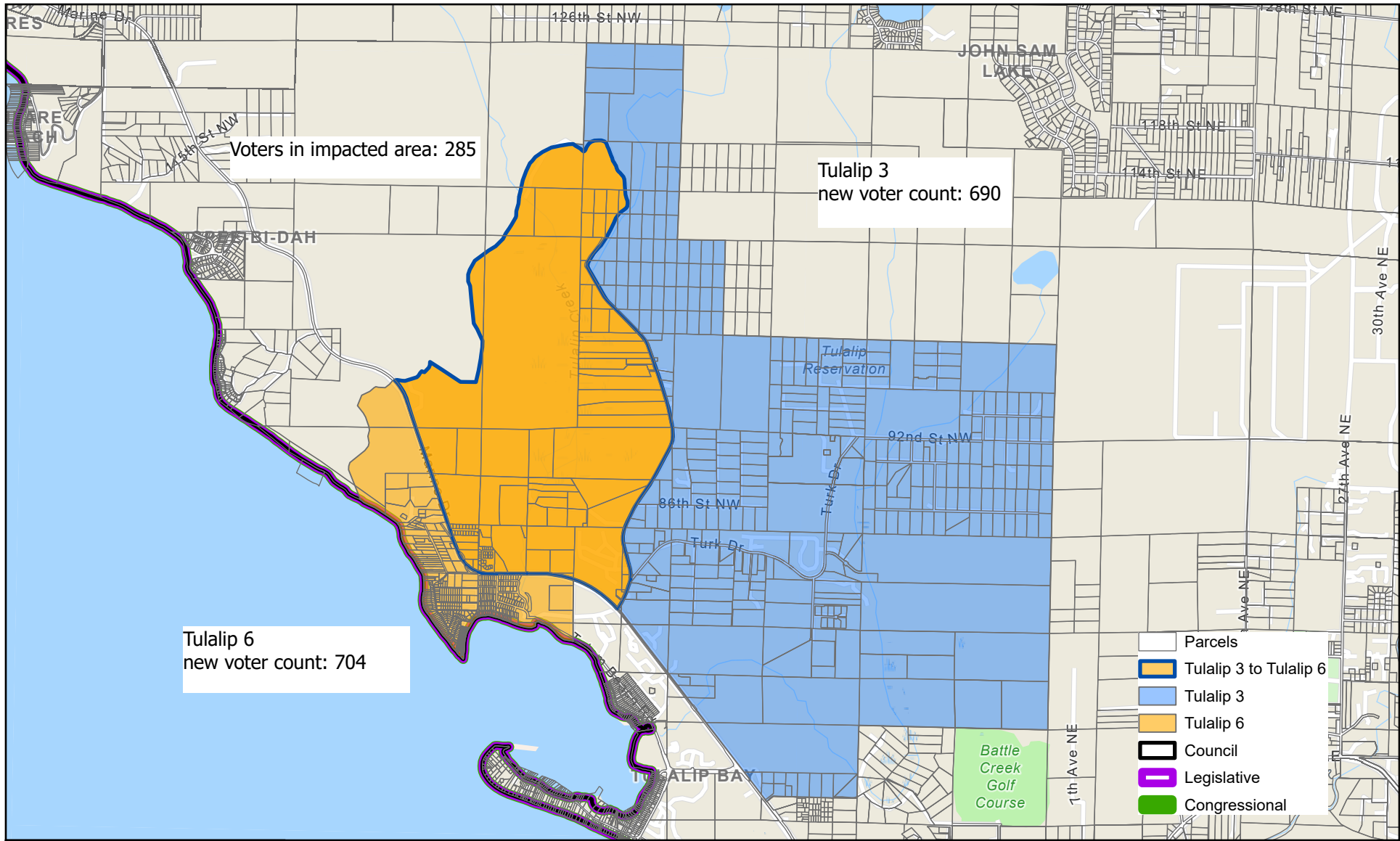


County Council District 1

2026

Map 3

credits: Esri, CGLAR, USGS, Sources: Esri, TomTom, Garmin, FMA, NOAA, USGS, (c) OpenStreetMap contributors, and the GIS User Community ; Coordinate System: NAD 1983 StatePlane Washington North FIPS 4601 Feet

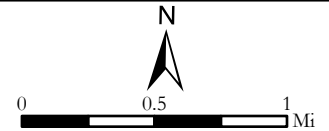


- Parcels
- Tulalip 3 to Tulalip 6
- Tulalip 3
- Tulalip 6
- Council
- Legislative
- Congressional



Tulalip 3 to Tulalip 6

To Reduce Voter Count

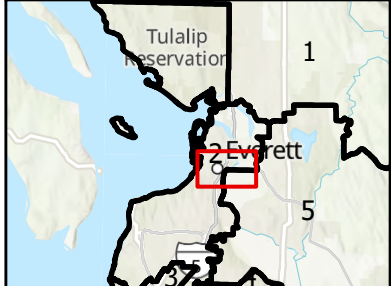
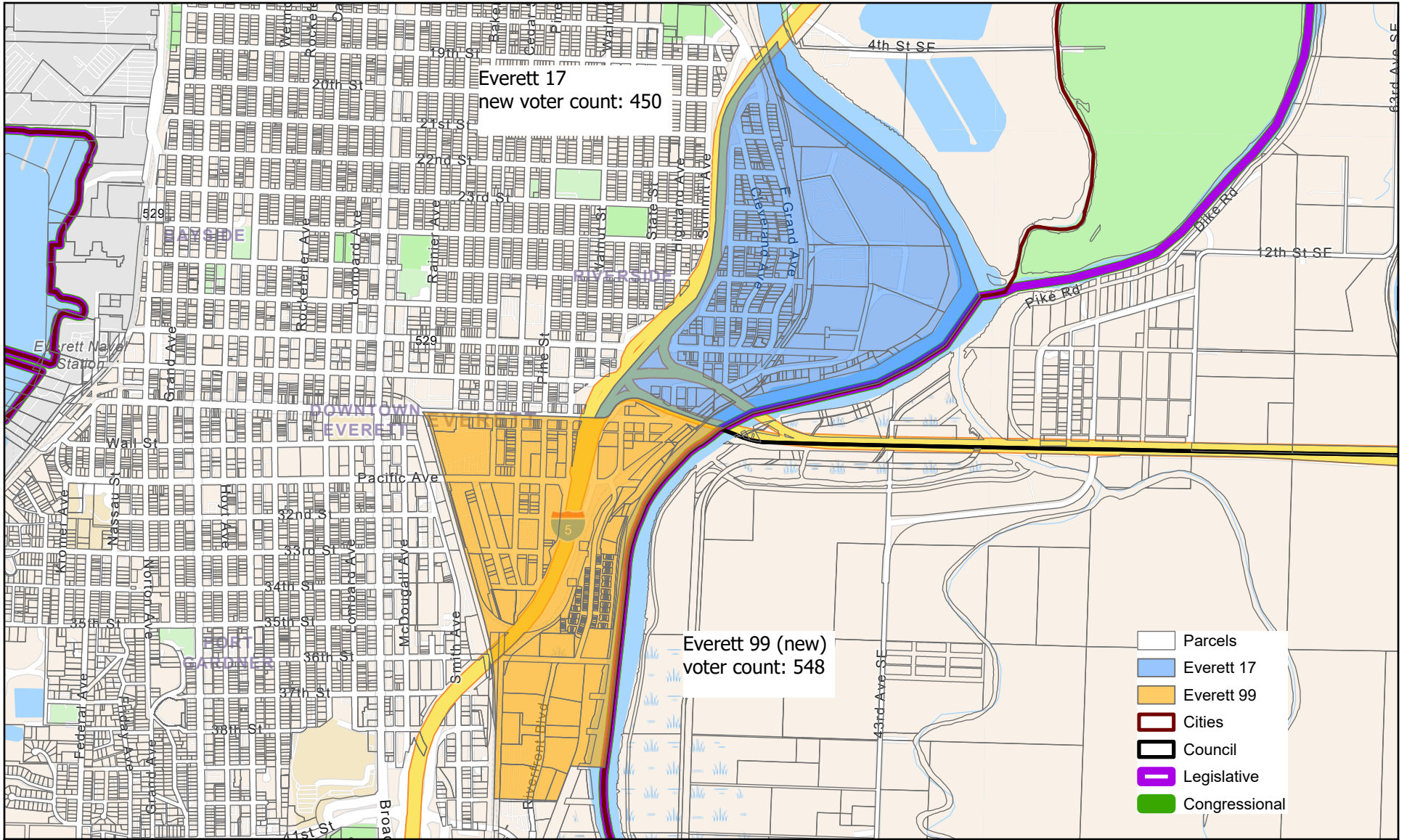


County Council District 2

2026

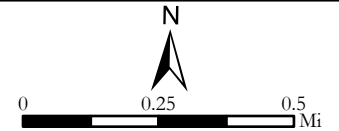
Map 4

credits: Esri, UGLAR, USGS, Sources: Esri, TomTom, Garmin, FMA, NOAA, USGS, (c) OpenStreetMap contributors, and the GIS User Community ; Coordinate System: NAD 1983 StatePlane Washington North FIPS 4601 Feet



Everett 17 to Everett 99 (new)

To Reduce Voter Count

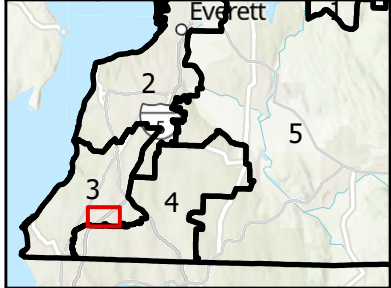
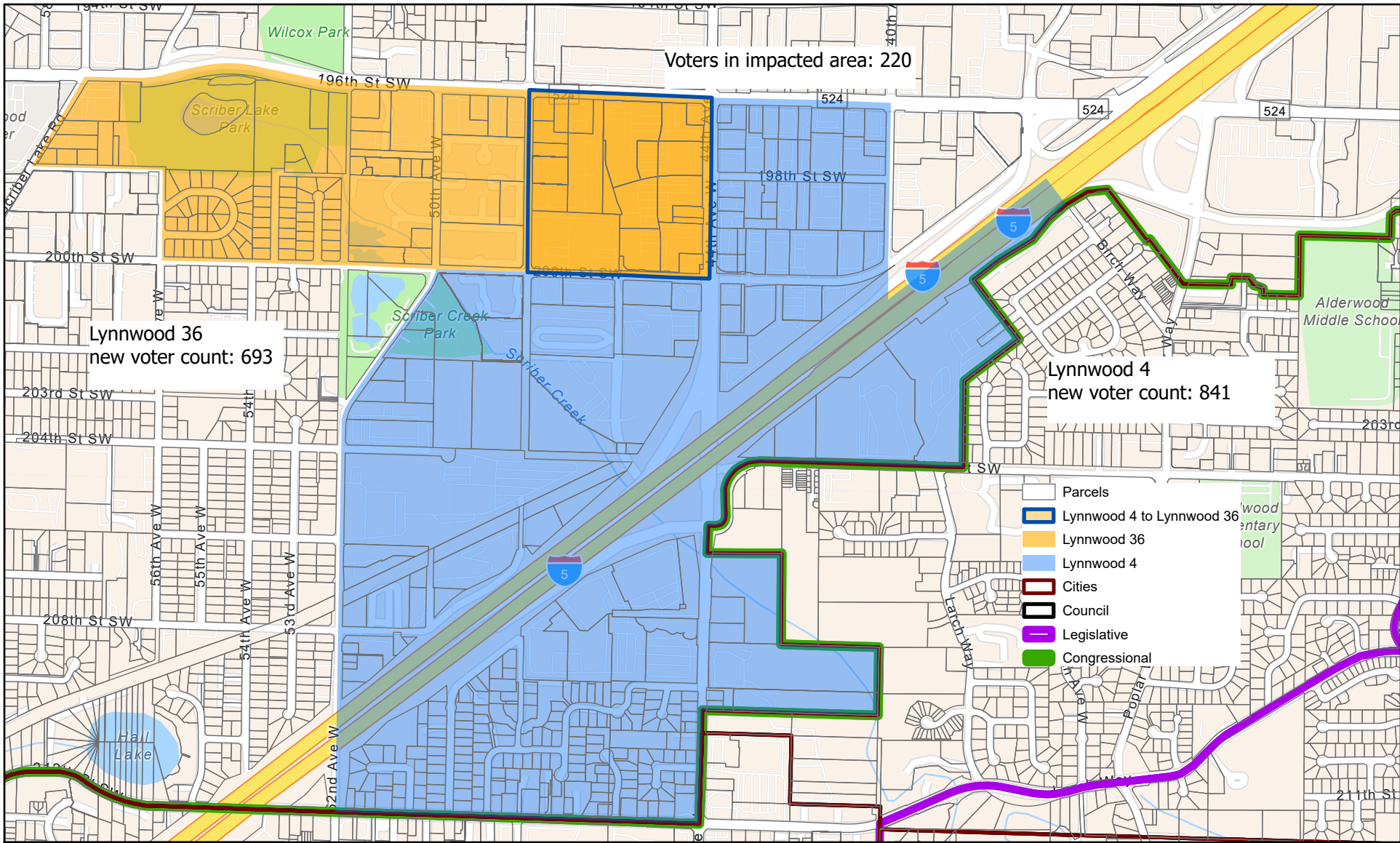


County Council District 2

2026

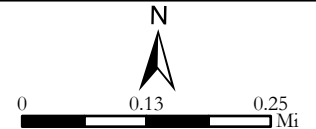
Map 5

credits: Esri, UGIAR, USGS, Sources: Esri, TomTom, Garmin, FWA, NOAA, USGS, (c) OpenStreetMap contributors, and the GIS User Community ; Coordinate System: NAD 1983 StatePlane Washington North FIPS 4601 Feet



Lynwood 4 To Lynwood 36

To Reduce Voter Count

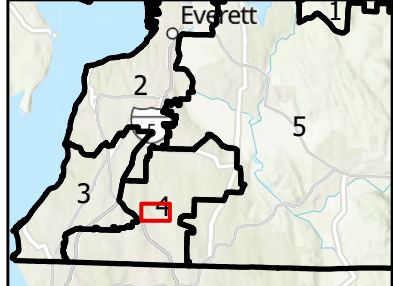
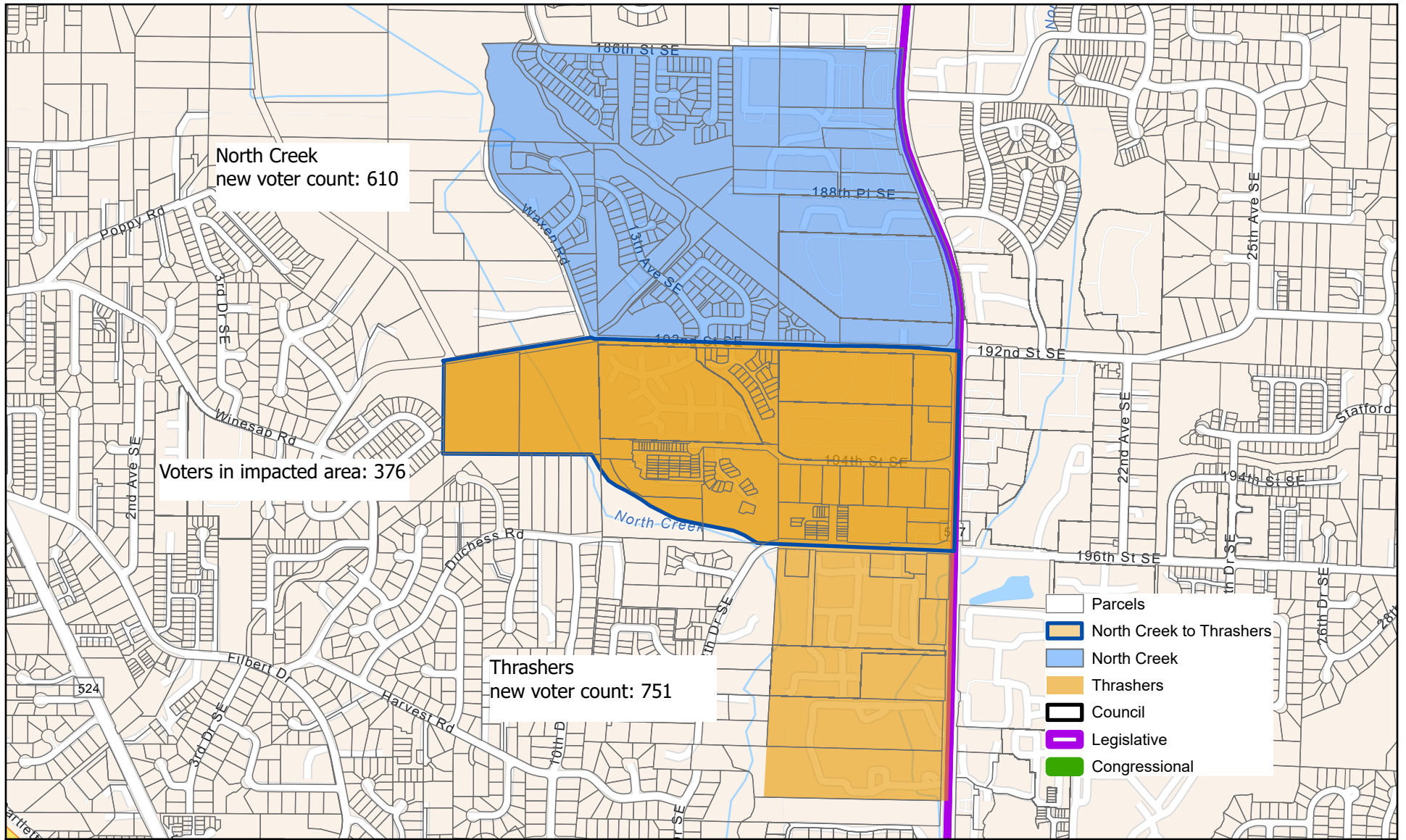


County Council District 3

2026

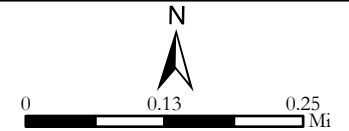
Map 7

credits: Esri, UGIAR, USGS, Sources: Esri, TomTom, Garmin, FMA, NOAA, USGS, (c) OpenStreetMap contributors, and the GIS User Community ; Coordinate System: NAD 1983 StatePlane Washington North FIPS 4601 Feet



North Creek to Thrashers

To Reduce Voter Count

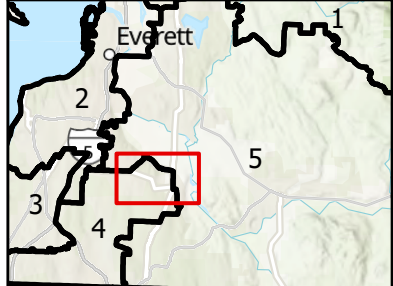
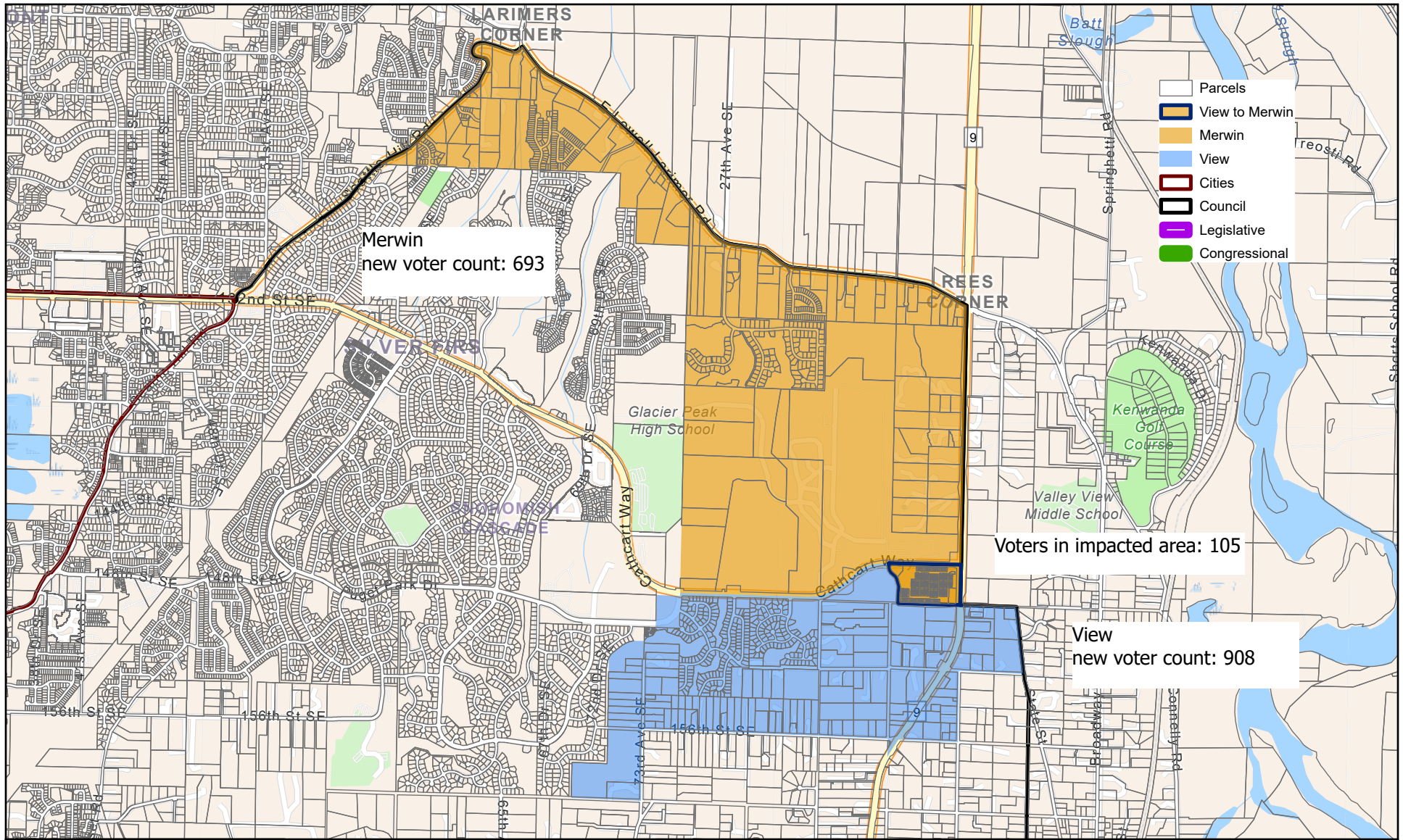


County Council District 4

2026

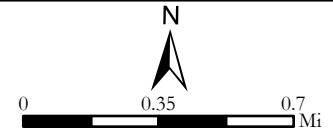
Map 8

credits: Esri, CGIAR, USGS, Sources: Esri, TomTom, Garmin, FWA, NOAA, USGS, (c) OpenStreetMap contributors, and the GIS User Community ; Coordinate System: NAD 1983 StatePlane Washington North FIPS 4601 Feet



View to Merwin

To Reduce Voter Count

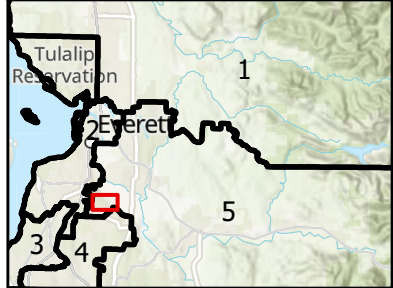
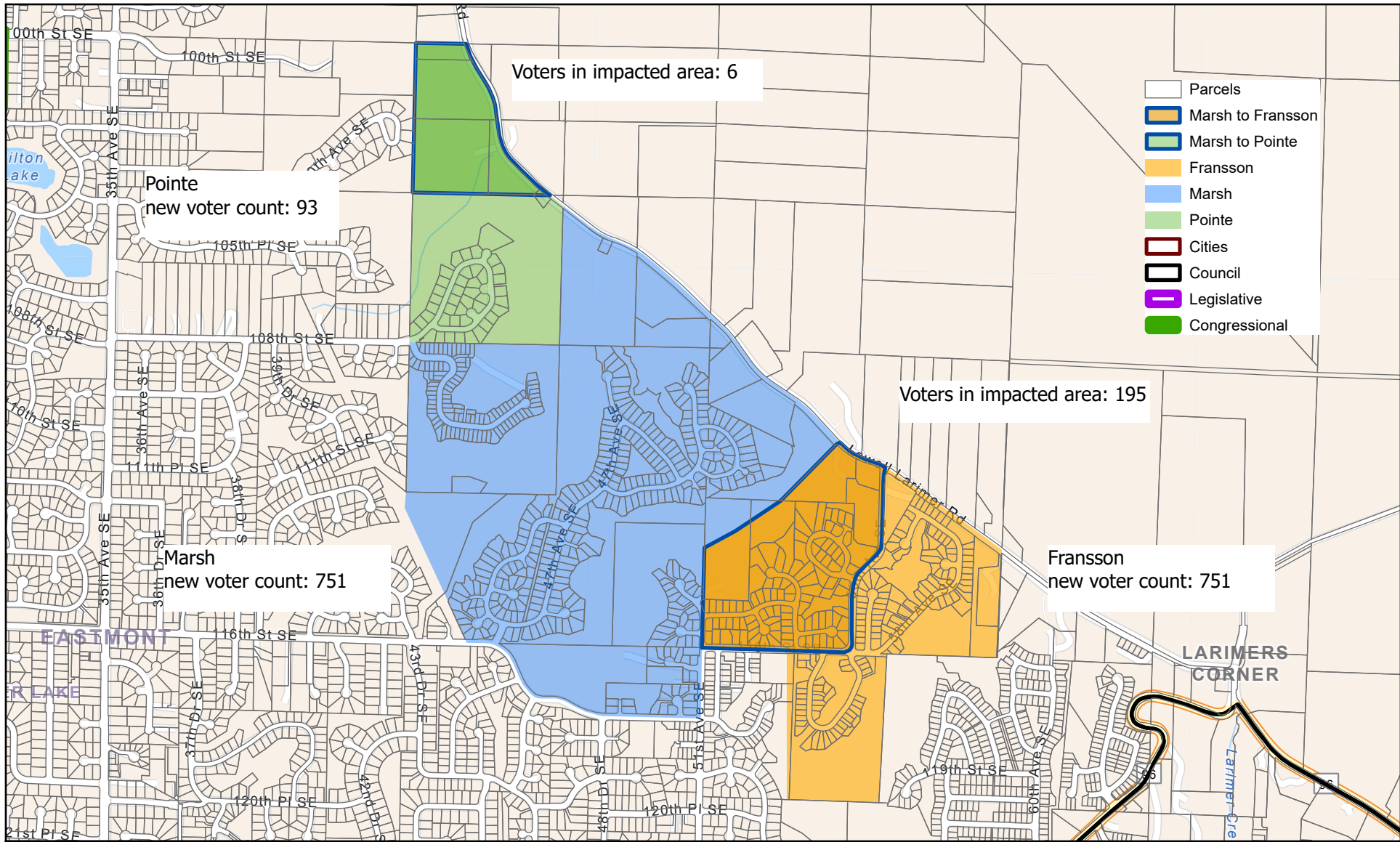


County Council District 4

2026

Map 9

credits: Esri, UGIAR, USGS, Sources: Esri, TomTom, Garmin, FMA, NOAA, USGS, (c) OpenStreetMap contributors, and the GIS User Community ; Coordinate System: NAD 1983 StatePlane Washington North FIPS 4601 Feet



Marsh to Pointe, Fransson

To Reduce Voter Count

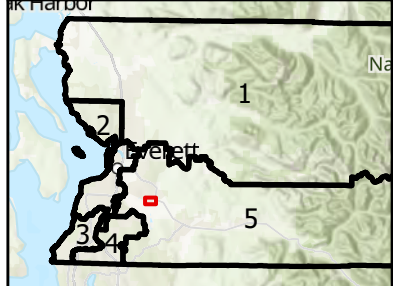
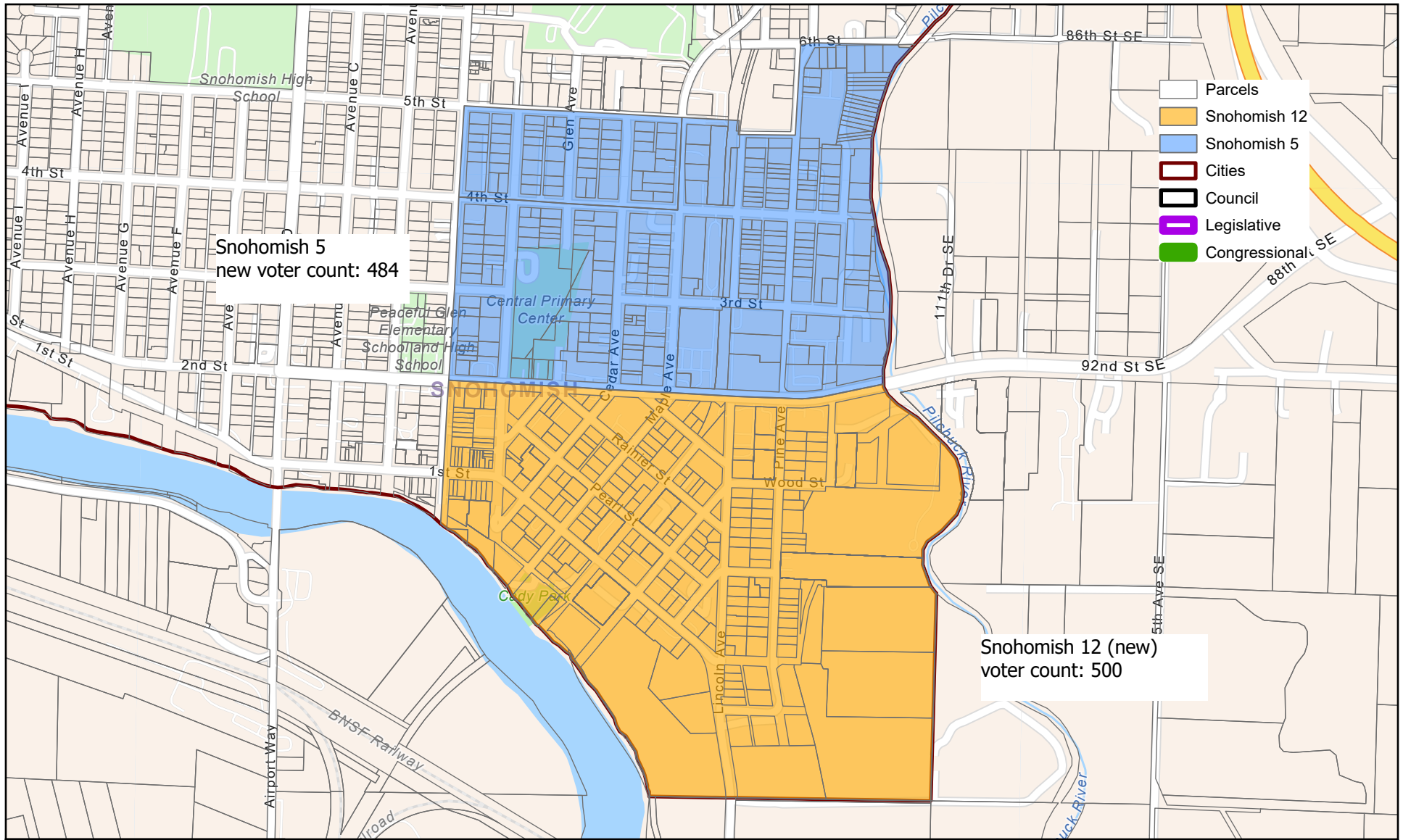


County Council District 5

2026

Map 10

credits: Esri, CGIAR, USGS, Sources: Esri, TomTom, Garmin, FWA, NOAA, USGS, (c) OpenStreetMap contributors, and the GIS User Community ; Coordinate System: NAD 1983 StatePlane Washington North FIPS 4601 Feet



Snohomish 5 to Snohomish 12 (new)



To Reduce Voter Count

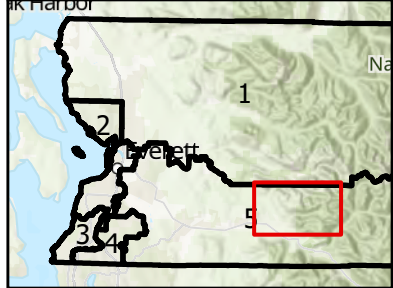
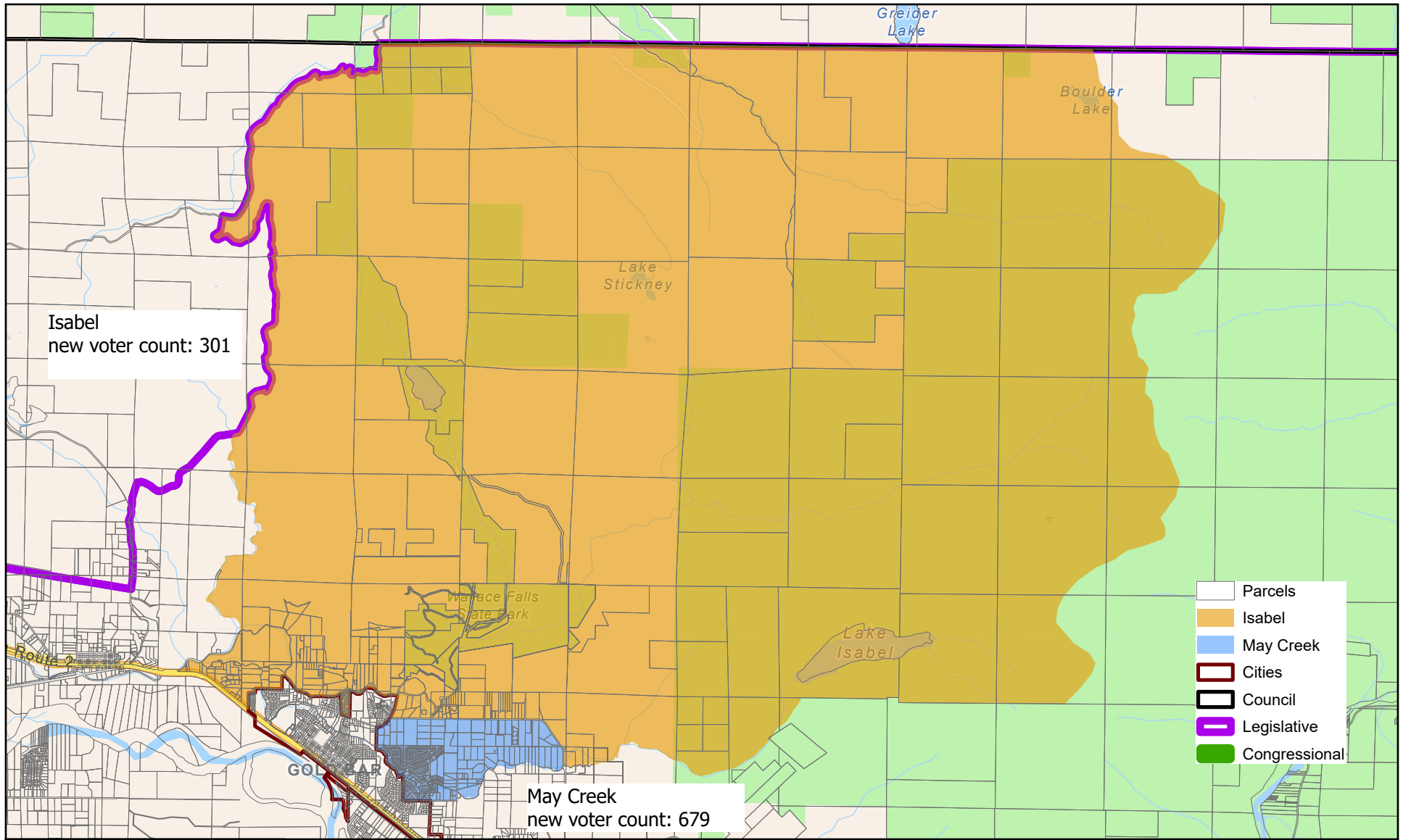


County Council District 5

2026

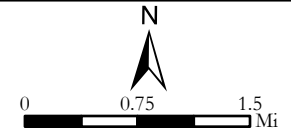
Map 11

credits: Sources: Esri, TomTom, Garmin, FMA, NOAA, USGS, (c) OpenStreetMap contributors, and the GIS User Community, Esri, USGS ; Coordinate System: NAD 1983 StatePlane Washington North FIPS 4601 Feet



May Creek to Isabel (new)

To Reduce Voter Count

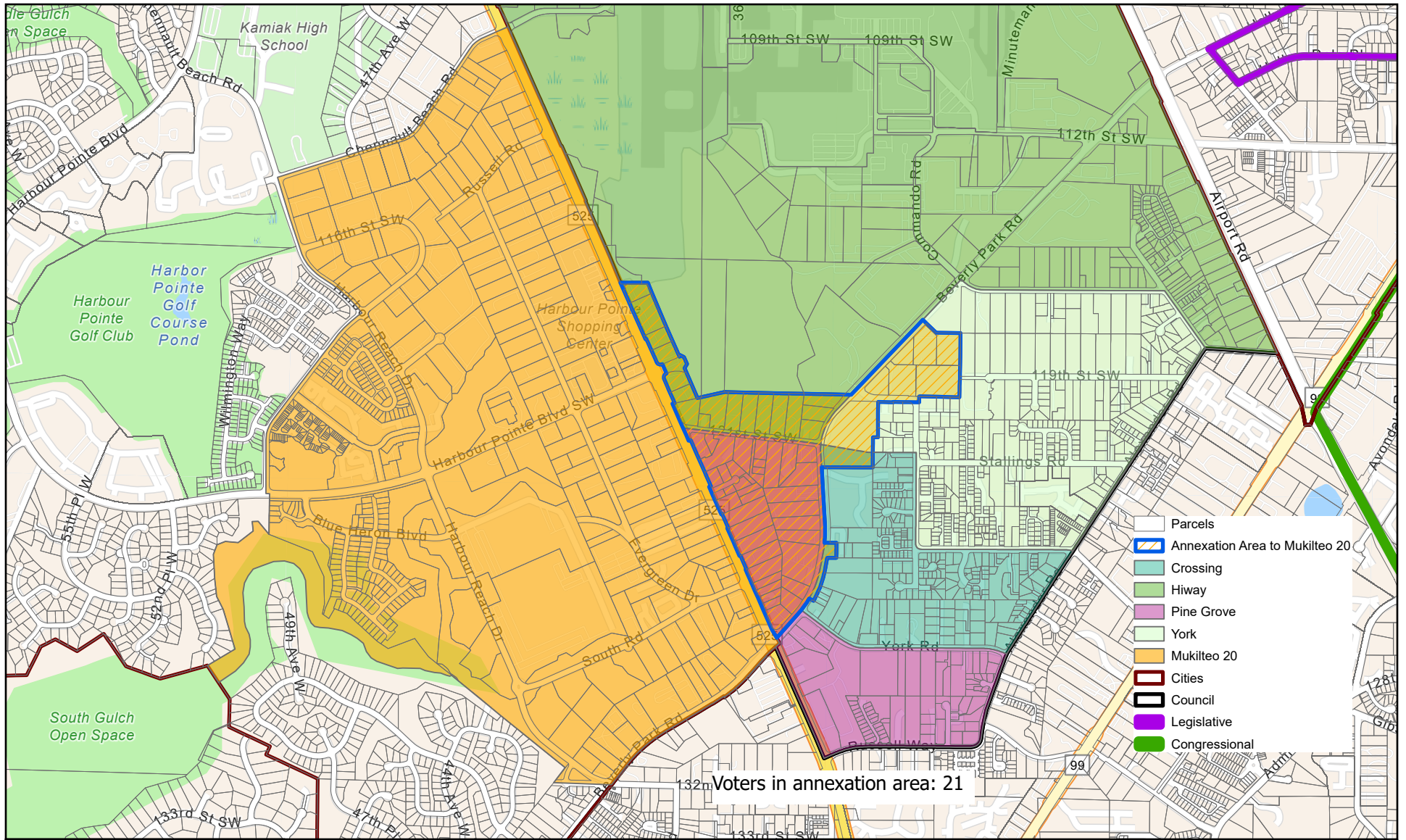


County Council District 5

2026

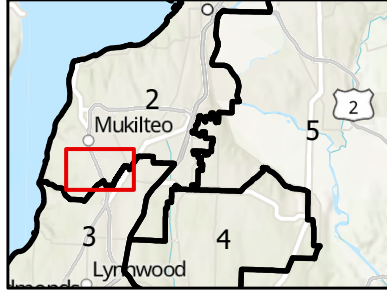
Map 12

credits: Sources: Esri, TomTom, Garmin, FMA, NOAA, USGS, (c) OpenStreetMap contributors, and the GIS User Community, Esri, USGS ; Coordinate System: NAD 1983 StatePlane Washington North FIPS 4601 Feet

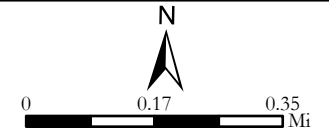


- Parcels
- Annexation Area to Mukilteo 20
- Crossing
- Hiway
- Pine Grove
- York
- Mukilteo 20
- Cities
- Council
- Legislative
- Congressional

Voters in annexation area: 21



**Hiway, Pine Grove, Crossing, and York
to Mukilteo 20**
Due to Annexation Ordinance 1513

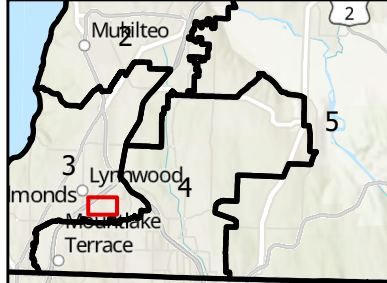
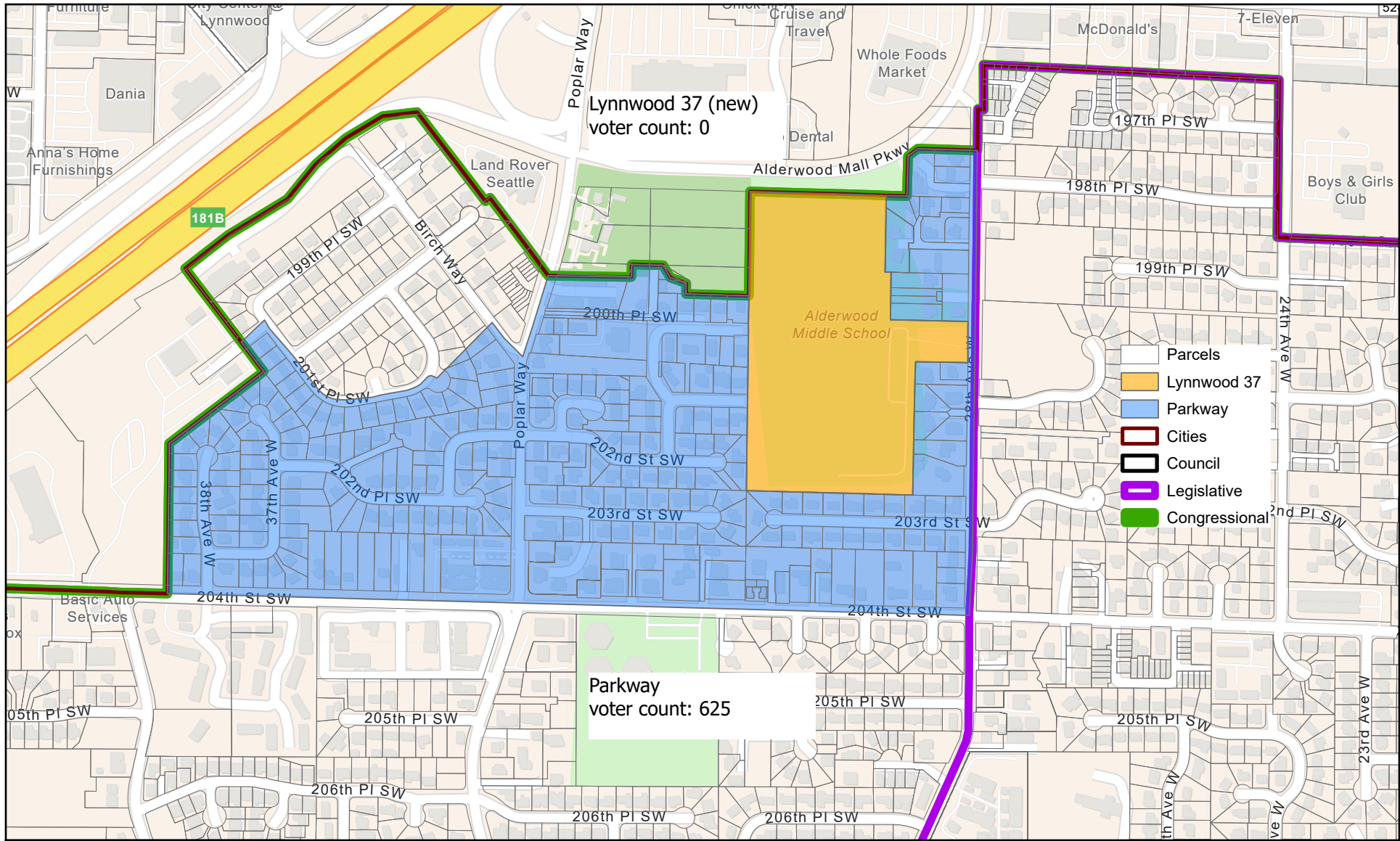


County Council District 2

2026

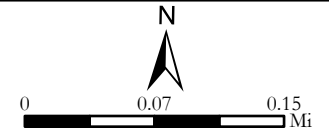
Map 13

credits: Esri, UGLAR, USGS, Sources: Esri, TomTom, Garmin, FWA, NOAA, USGS, (c) OpenStreetMap contributors, and the GIS User Community ; Coordinate System: NAD 1983 StatePlane Washington North FIPS 4601 Feet



Parkway to Lynnwood 37 (new)

Due to Annexation Ordinance 3488

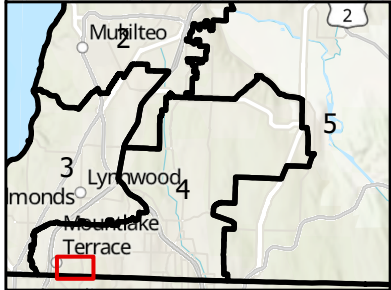
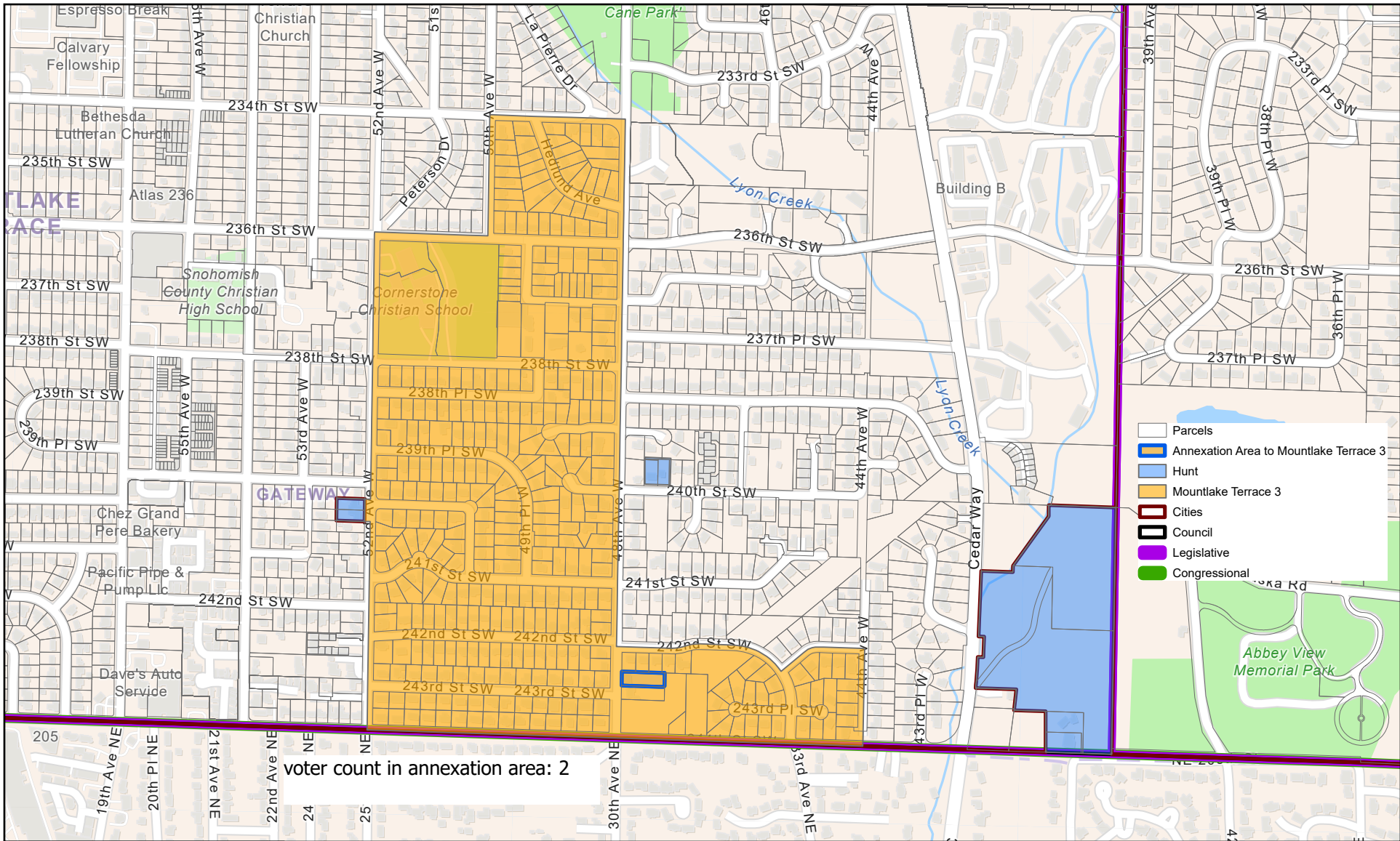


County Council District 3

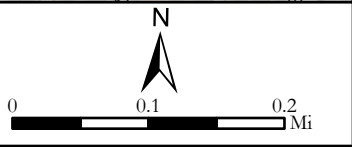
2026

Map 14

credits: Esri, UGIAR, USGS, Sources: Esri, TomTom, Garmin, FWA, NOAA, USGS, (c) OpenStreetMap contributors, and the GIS User Community ; Coordinate System: NAD 1983 StatePlane Washington North FIPS 4601 Feet



Hunt to Mountlake Terrace 3
 Due to Annexation Ordinance 2896

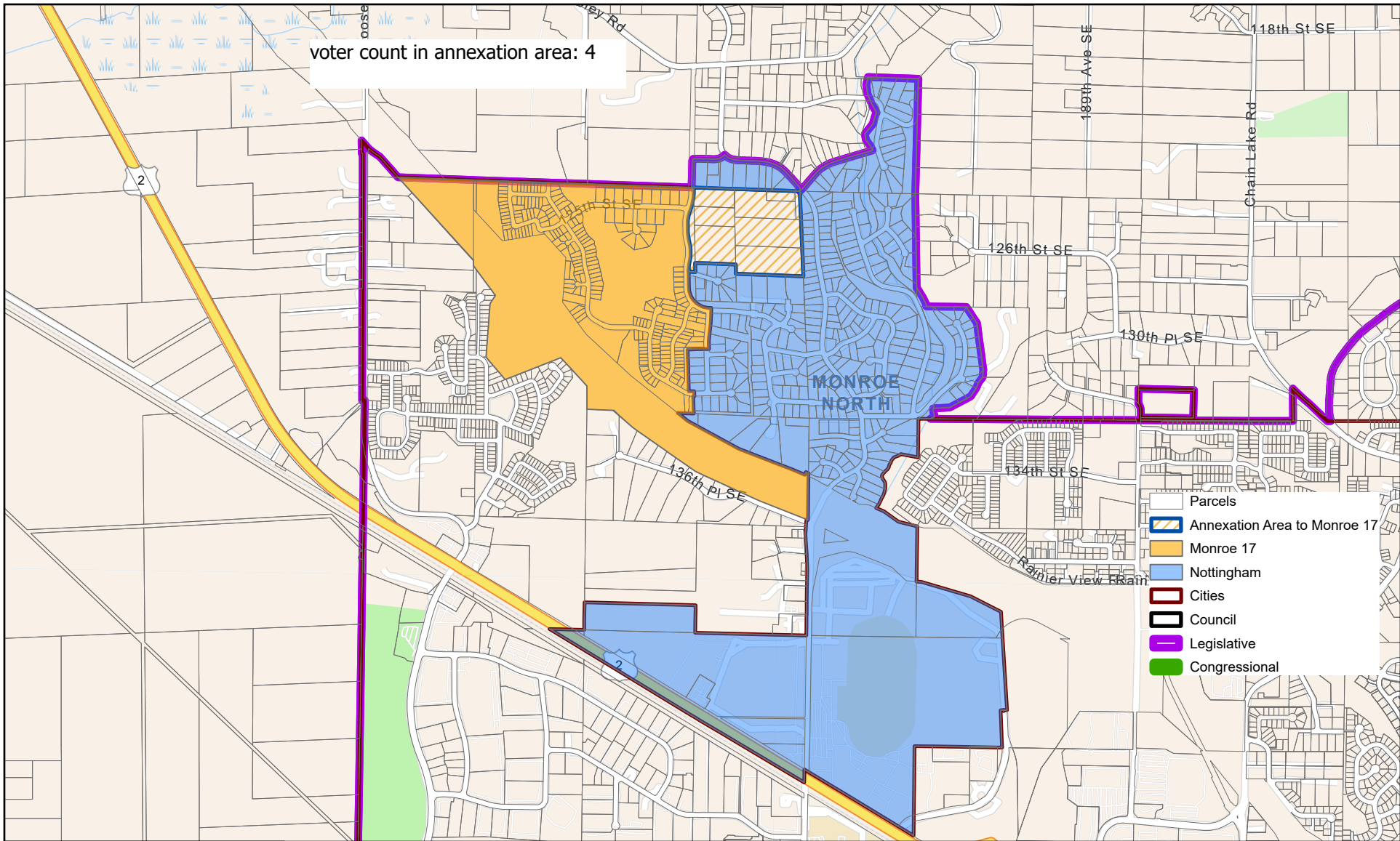


County Council District 4

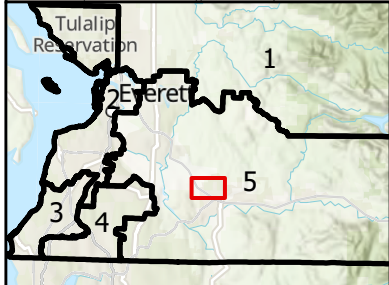
2026

Map 15

credits: Esri, UGIAR, USGS, Sources: Esri, TomTom, Garmin, FMA, NOAA, USGS, (c) OpenStreetMap contributors, and the GIS User Community ; Coordinate System: NAD 1983 StatePlane Washington North FIPS 4601 Feet

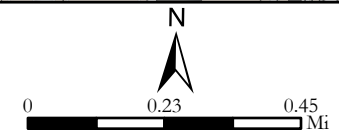


- Parcels
- Annexation Area to Monroe 17
- Monroe 17
- Nottingham
- Cities
- Council
- Legislative
- Congressional



Nottingham to Monroe 17

Due to Annexation Ordinance 013/2025

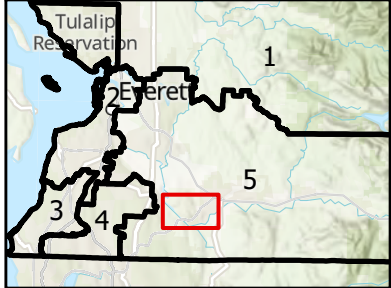
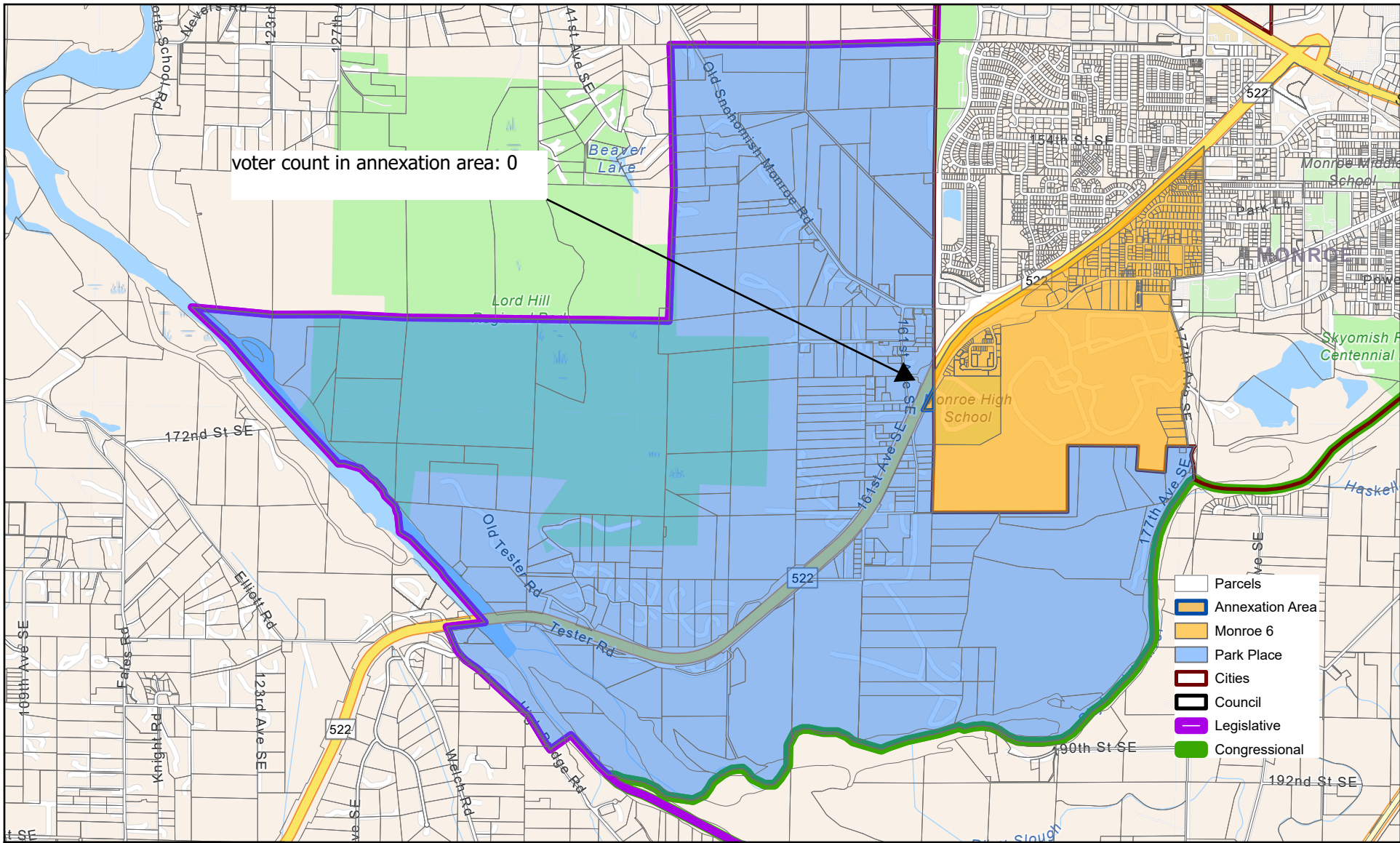


County Council District 5

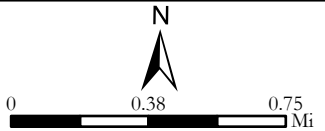
2026

Map 16

credits: Esri, CGIAR, USGS, Sources: Esri, TomTom, Garmin, FWA, NOAA, USGS, (c) OpenStreetMap contributors, and the GIS User Community ; Coordinate System: NAD 1983 StatePlane Washington North FIPS 4601 Feet



Park Place to Monroe 6
 Due to Annexation Ordinance 022/2025



County Council District 5

2026

Map 17

credits: Esri, CGIAR, USGS, Sources: Esri, TomTom, Garmin, FWA, NOAA, USGS, (c) OpenStreetMap contributors, and the GIS User Community ; Coordinate System: NAD 1983 StatePlane Washington North FIPS 4601 Feet