

Summer 2023 Open Space Applications



PDS Recommendations
Snohomish County Council Briefing
June 2023

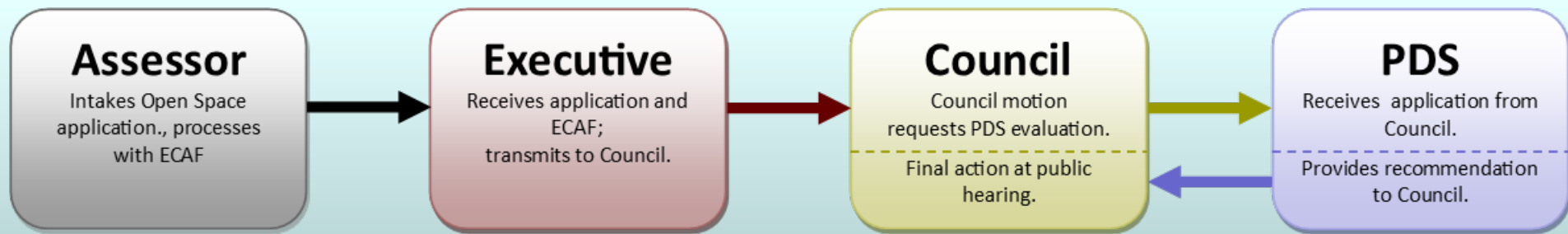
Open Space Program

- Open Space Taxation Act - Chapter 84.34 RCW
 - Purpose is to conserve adequate open space lands for production of food and forest crops, and preserve natural and scenic resources
 - Participating properties are valued based on current use
- Three Open Space Classifications:
 - Open Space General (OS-G)
 - Open Space General – Farm & Agriculture Conservation (OS-FAC)
 - Open Space Farm and Agriculture (OS-FA)
 - Open Space – Timber (OS-T)

Open Space Program

- Chapter 4.28 SCC – Open Space policies and procedures
 - Implements the Open Space Taxation Act
 - Applications must meet one of 20 criteria in SCC 4.28.040
- PDS evaluates OS-G, OS-FAC, and OS-T applications
- County Council, after a public hearing, approves or denies OS-G, OS-FAC, and OS-T applications
- Assessor approves OS-FA applications

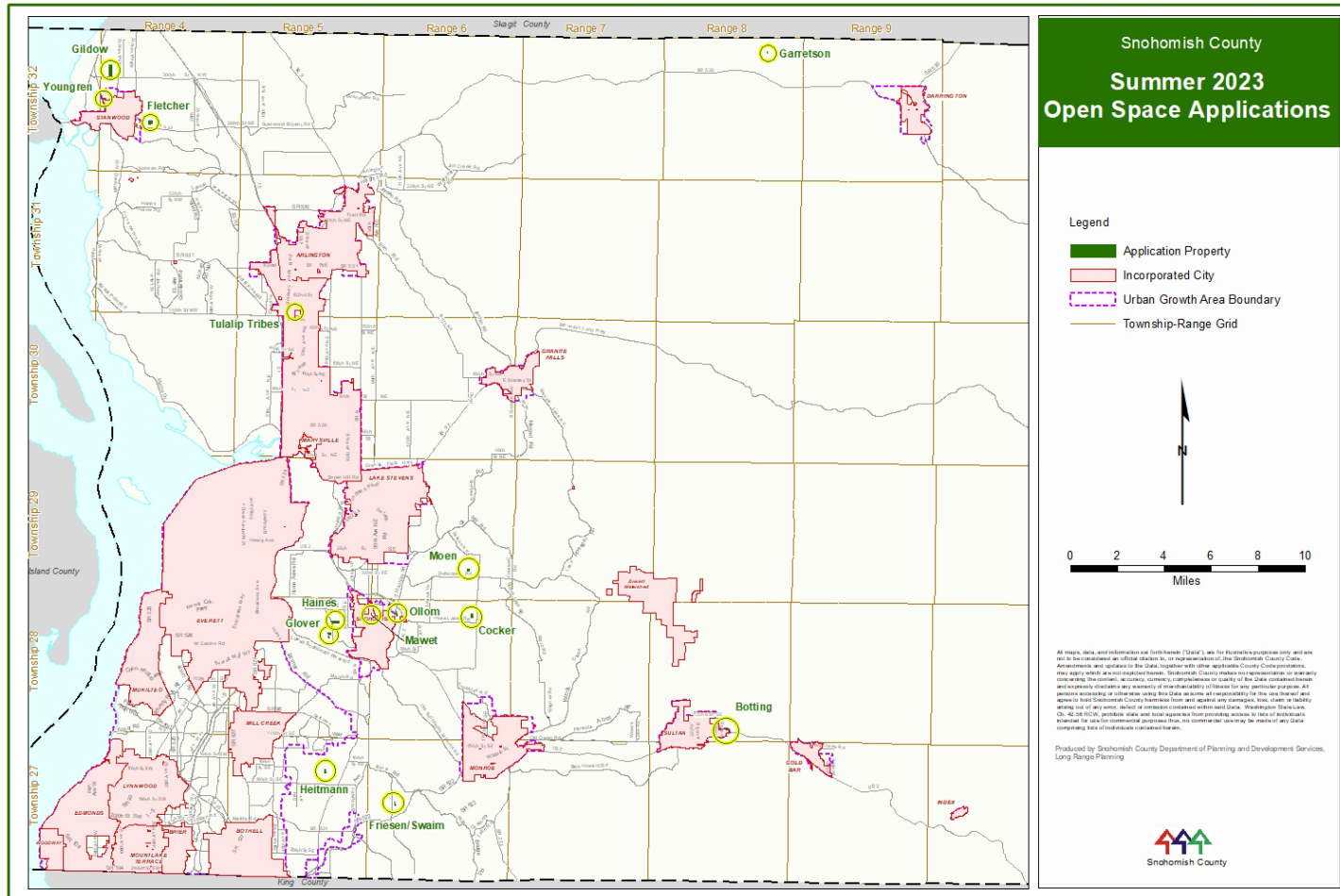
Open Space Program Administrative Process



Summer 2023 Open Space Applications

- Fourteen applications
- The requests are new classifications and reclassifications
- Requests would add 41.29 acres to the Open Space Program and would reclassify 110.14 acres within the Program

Summer 2023 Applications Countywide Map



Summer 2023 Open Space Farm and Agriculture to Open Space Farm and Agriculture Conservation

- Eight Applications reclassifying from OS-FA to OS-FAC:

Applicant	Acreage
Haines	18.65
Gildow	20.00
Glover	14.62
Friesen/Swaim	5.75
Fletcher	17.88
Botting	11.09
Mawet	5.13
Ollom	12.33
Total	105.45

Summer 2023 Open Space Farm and Agriculture to Open Space General

- One Application reclassifying from OS-FA to OSG:

Applicant	Acreage
Tulalip Tribes	4.69

Summer 2023 New Open Space General Classifications

- Five Applications Classifying as OSG:

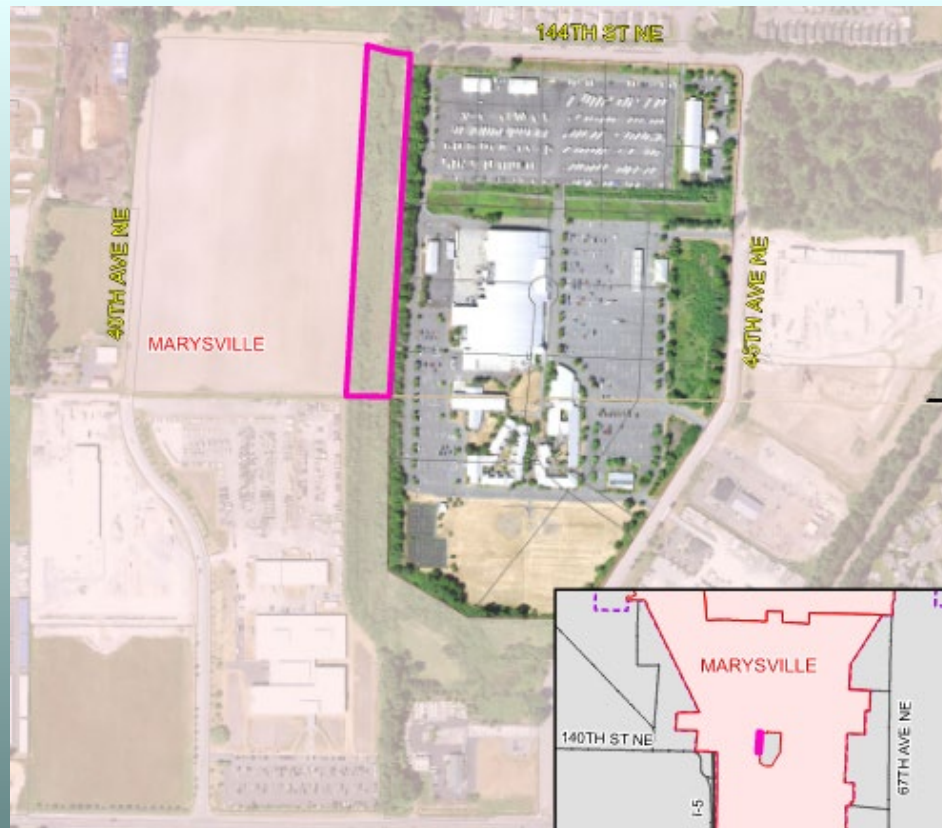
Applicant	Acreage
Heitmann	6.6
Youngren	5.48
Moen	10.00
Garretson	4.54
Cocker	14.67
Total	41.29

Tulalip Tribes (3240)

Proposal: Reclassify to Open Space-General

Location: Within the City of Marysville

Requested Acreage: 4.69



Tulalip Tribes (3240)

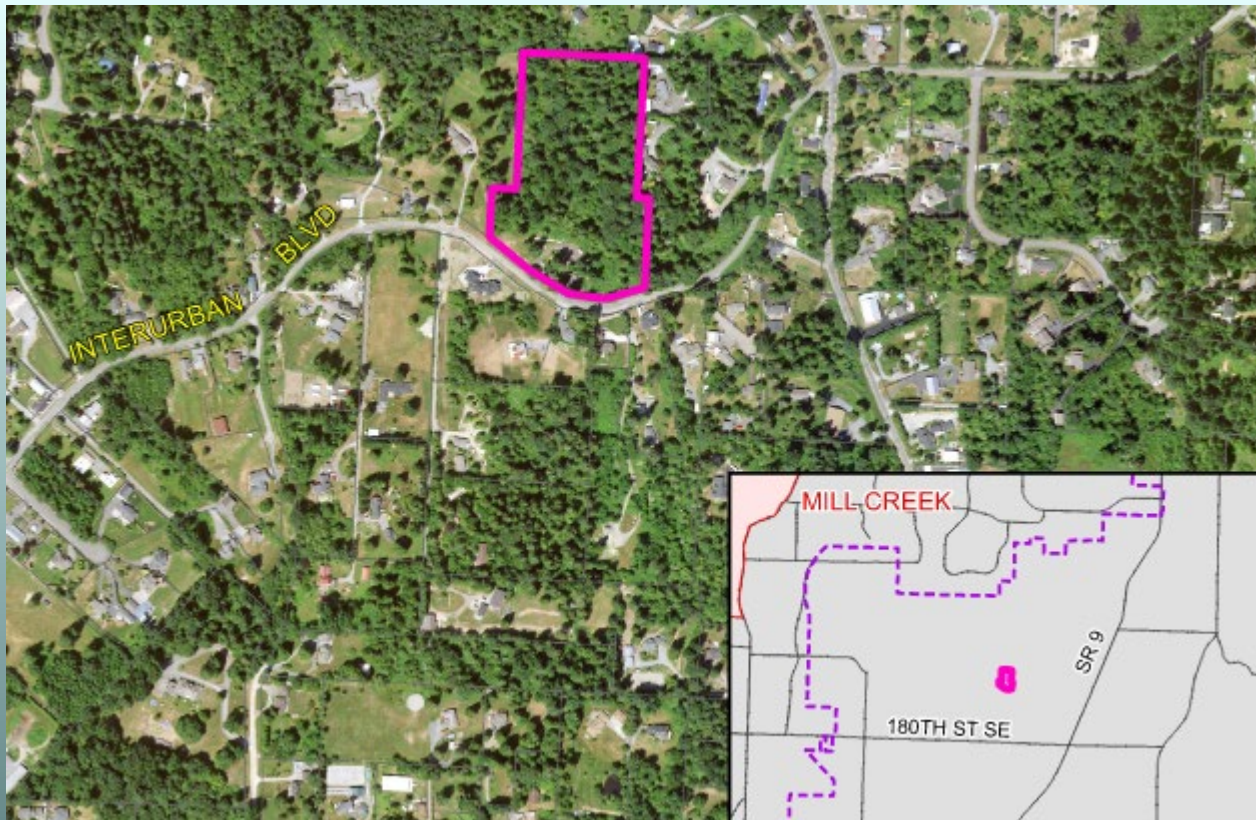
- Requested acreage meets state & county open space requirements
- Consistent with county criteria for **Open Space-General** classification:
 - (3) – Rare plant or animal species
 - (5) – Contains streams and their buffers
- PDS recommends approval

Heitmann (3243)

Proposal: Classify to Open Space-General

Location: Approximately two miles east of the City of Mill Creek

Requested Acreage: 8.8



Heitmann (3243)

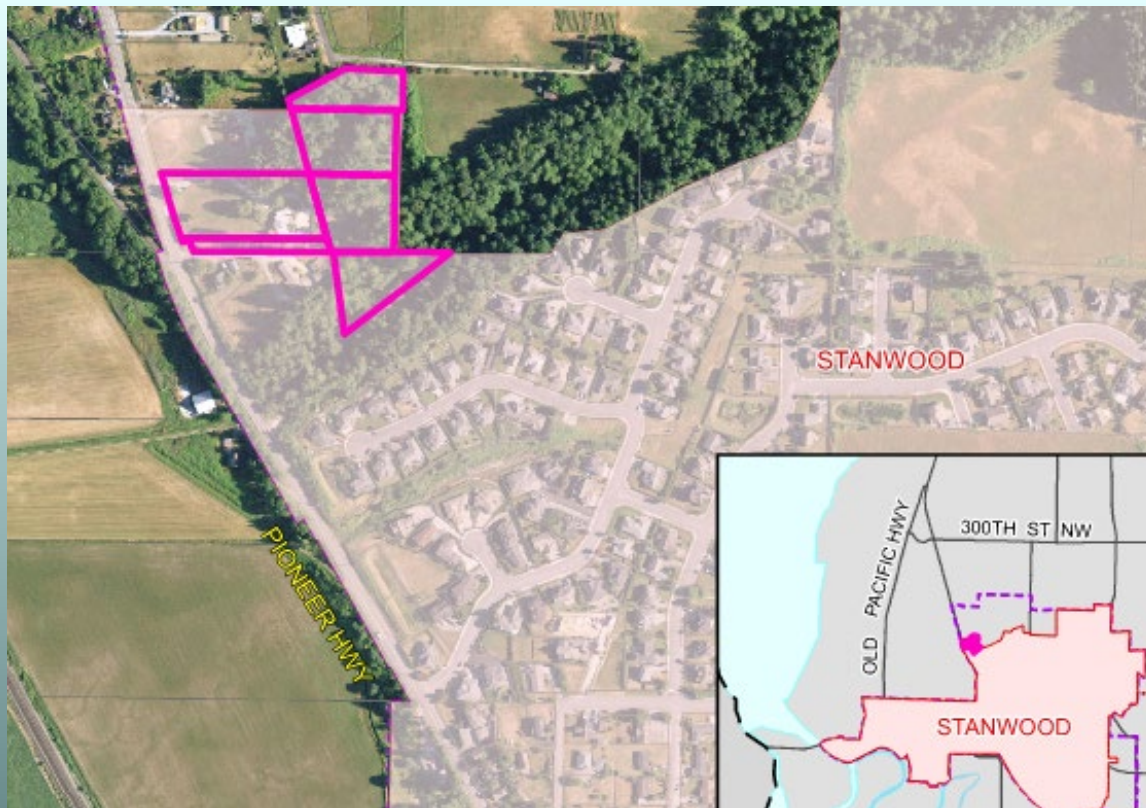
- Portion of requested acreage meets state & county open space requirements
- Consistent with county criteria for **Open Space-General** classification:
 - (5) – Contains streams and their buffers
 - (14) – Contains wetland areas
- PDS recommends approval of 6.6 acres of the 8.8 acres requested

Youngren (3244)

Proposal: Classify to Open Space-General

Location: Within the City of Stanwood

Requested Acreage: 6.48



Youngren (3244)

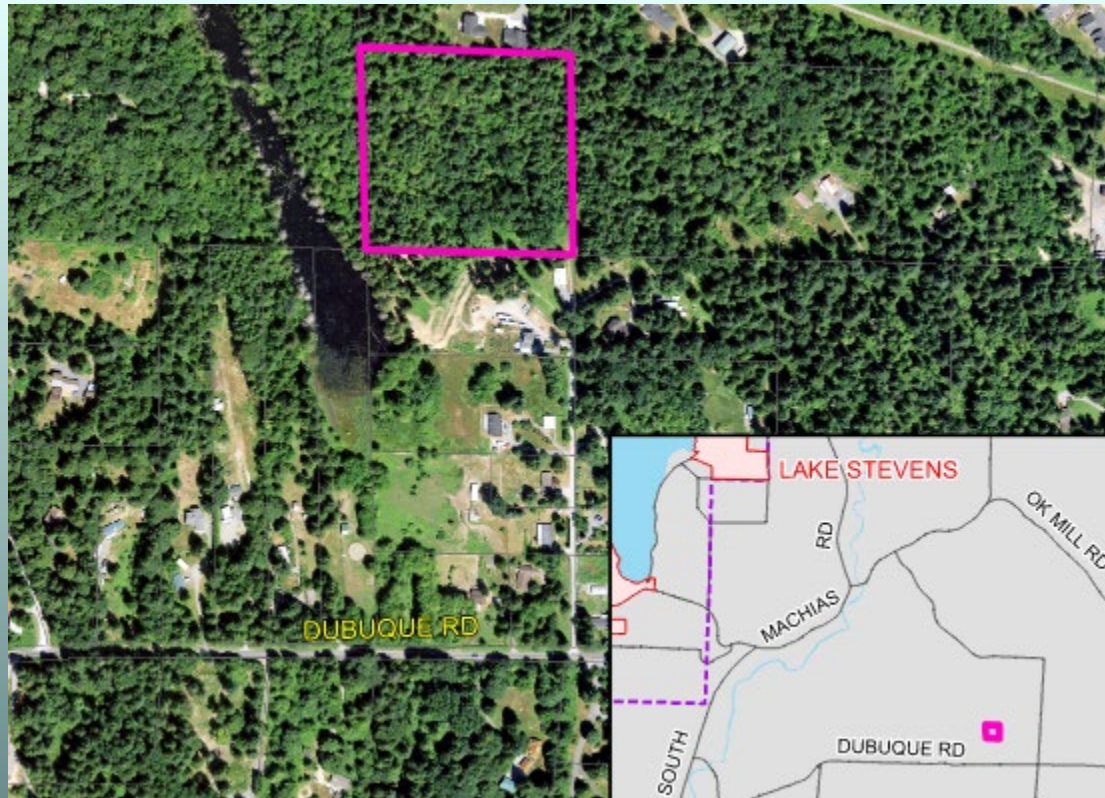
- Portion of requested acreage meets state & county open space requirements
- Consistent with county criteria for **Open Space-General** classification:
 - (4) – Urban Area with Mature Trees
- PDS recommends approval of 5.48 acres of the 6.48 acres requested

Moen (3250)

Proposal: Classify as Open Space - General

Location: Approximately two and a half miles east of the City of Lake Stevens

Requested Acreage: 10.00



Moen (3250)

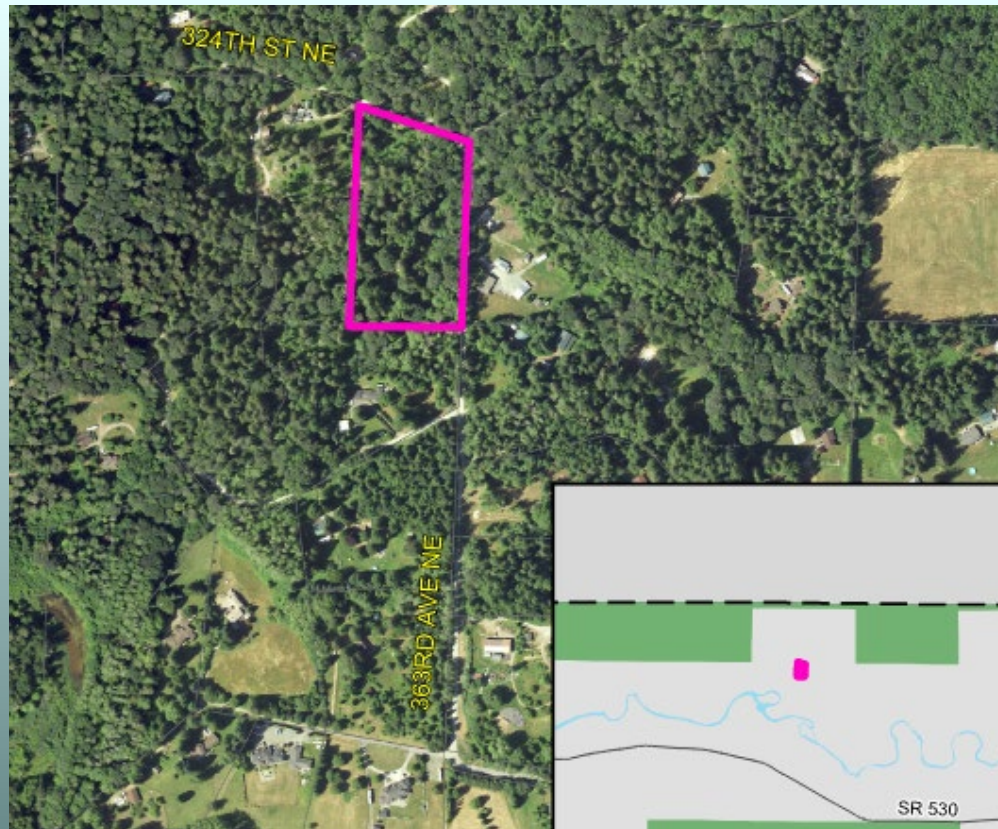
- Requested acreage meets state & county open space requirements
- Consistent with county criteria for **Open Space-General** classification:
 - (3) – Rare plant or animal species
 - (5) – Contains streams and their buffers
- PDS recommends approval

Garretson (3251)

Proposal: Classify to Open Space - General

Location: Approximately six miles west of the City of Darrington

Requested Acreage: 5.54



Garretson (3251)

- Portion of acreage meets state & county open space requirements
- Consistent with county criteria for **Open Space-General** classification:
 - (3) – Rare plant or animal species
 - (5) – Contains streams and their buffers
- PDS recommends approval of 4.54 acres of 5.54 acres requested

Cocker (3256)

Proposal: Classify to Open Space - General

Location: Approximately two miles east of the City of Mill Creek

Requested Acreage: 14.67



Cocker (3256)

- Requested acreage meets state & county open space requirements
- Consistent with county criteria for **Open Space-General** classification:
 - (3) – Rare plant or animal species
 - (5) – Contains streams and their buffers
- PDS recommends approval

Comments or Questions

