

Carbon Sequestration Forest Proviso

Department of Natural Resources

Duane Emmons, Assistant Deputy Supervisor
for State Uplands



September 27th, 2023



Carbon Sequestration Forest: \$70 million

- For purchase of forestland in counties west of the crest of the Cascade mountains, all of Skamania county, and the western portion of Klickitat county.
- When feasible and appropriate, the department should prioritize the purchase of lands at risk of conversion to a nonforested use.
- Up to 2,000 acres of structurally complex, carbon dense forestland currently existing on state trust lands may be transferred out of trust status with, prior to the transfer, a letter of support issued to the department by the legislative authority of the county in which the forestland is located.

Department of Natural Resources

- Manages 5.6 million acres of forest, range, agricultural, aquatic, and commercial lands.
- ~2.9 million acres is State Trust Lands
- DNR is the Trust Manager
- State of Washington is the Trustee
- Snohomish County and its junior taxing districts are the Trust Beneficiaries of over 62,000 acres of trust lands.

Trust Obligations

As manager of state trust lands, DNR has legal fiduciary responsibilities to:

- Generate revenue and other benefits for each trust, in perpetuity
- Preserve the corpus of the trust
- Exercise reasonable care and skill
- Act prudently to reduce the risk of loss for the trusts
- Maintain undivided loyalty to beneficiaries
- Act impartially with respect to current and future beneficiaries

State Trust Lands

State Lands

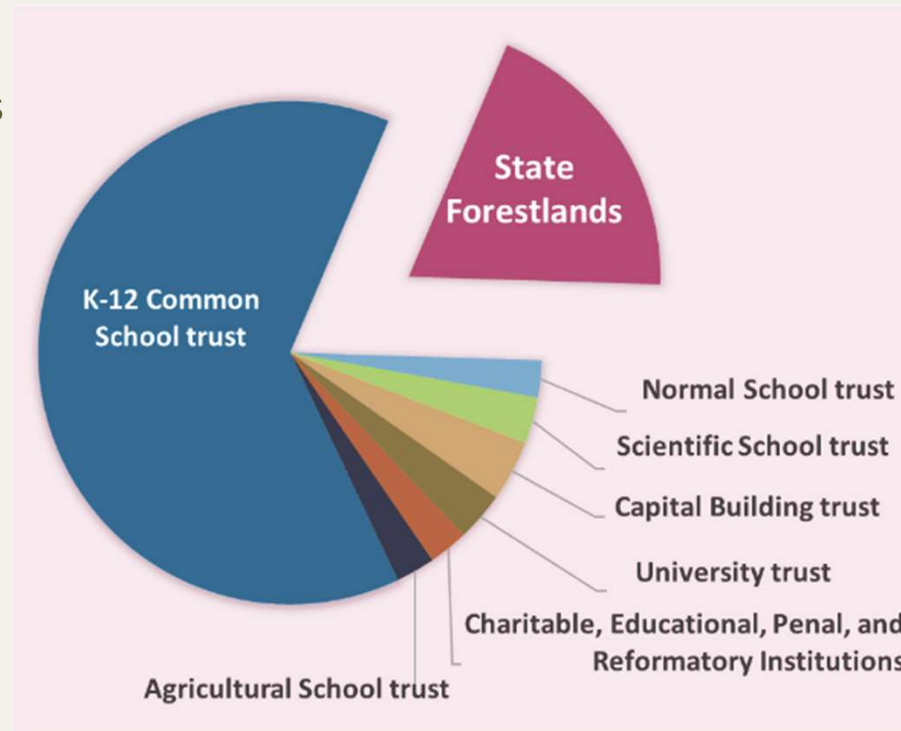
Federally granted

Enabling Act (25 U.S. Statutes at Large, c 180 p. 676)

State Constitution

Revenue is generated from a variety of sources

Source of financial support, primarily for public schools and colleges



State Forestlands

Transfer and purchase

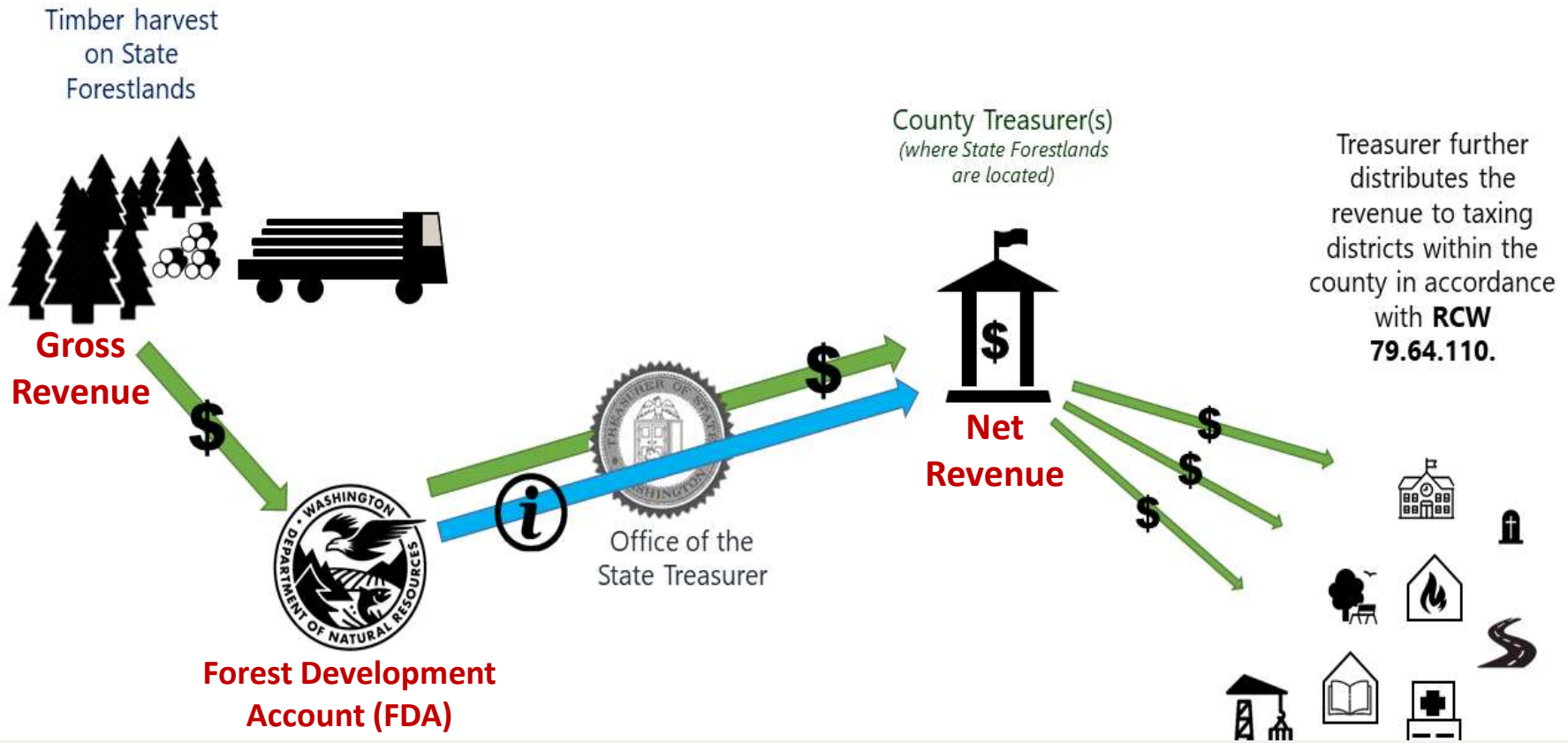
> 617,000 acres in 21 counties

Transfer lands acquired by counties through tax foreclosures.

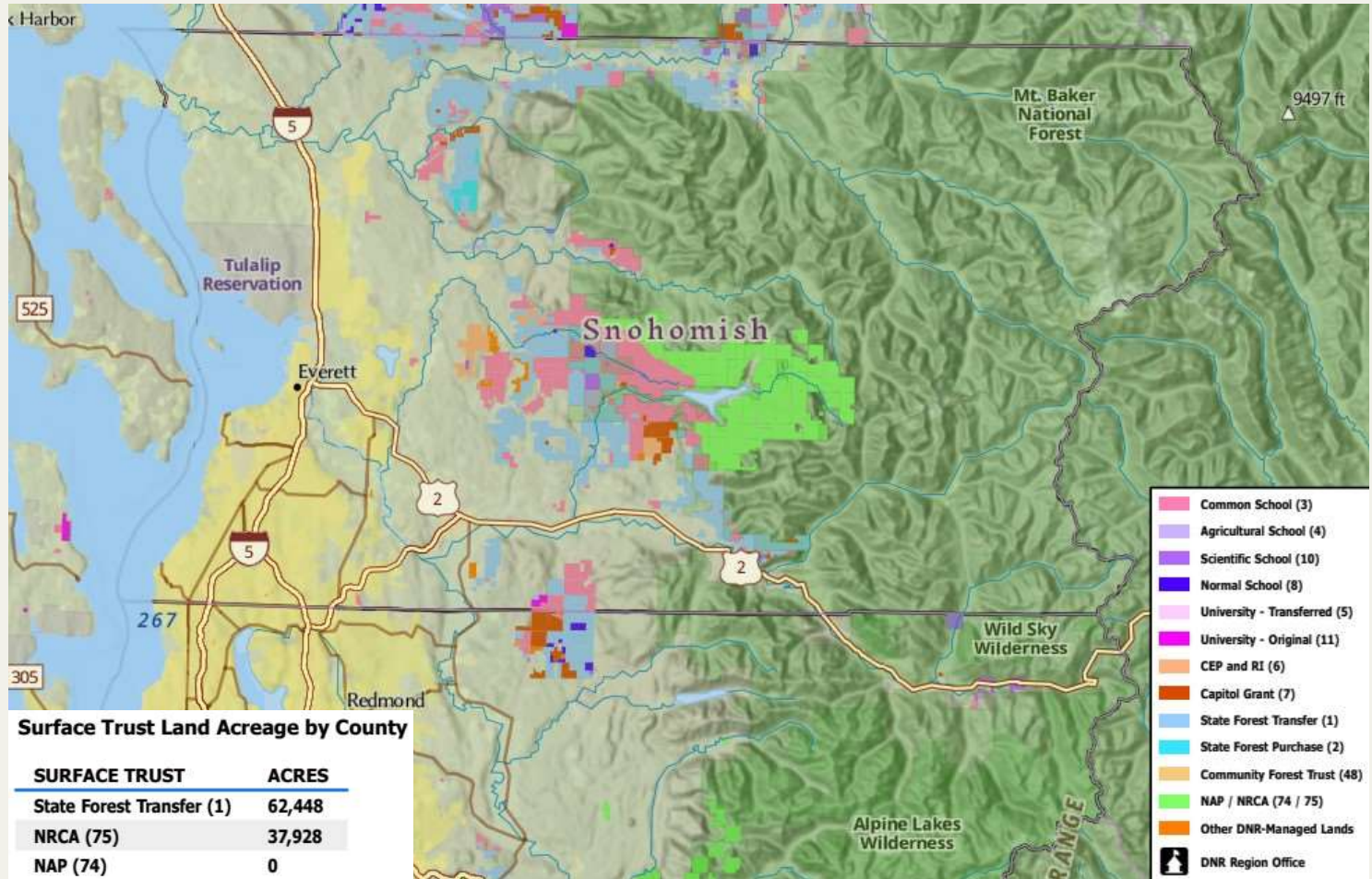
Statutory Trusts

Revenue helps fund county services, state schools, and junior taxing districts

State Forest Transfer Trust Distribution



DNR Managed Lands in Snohomish County

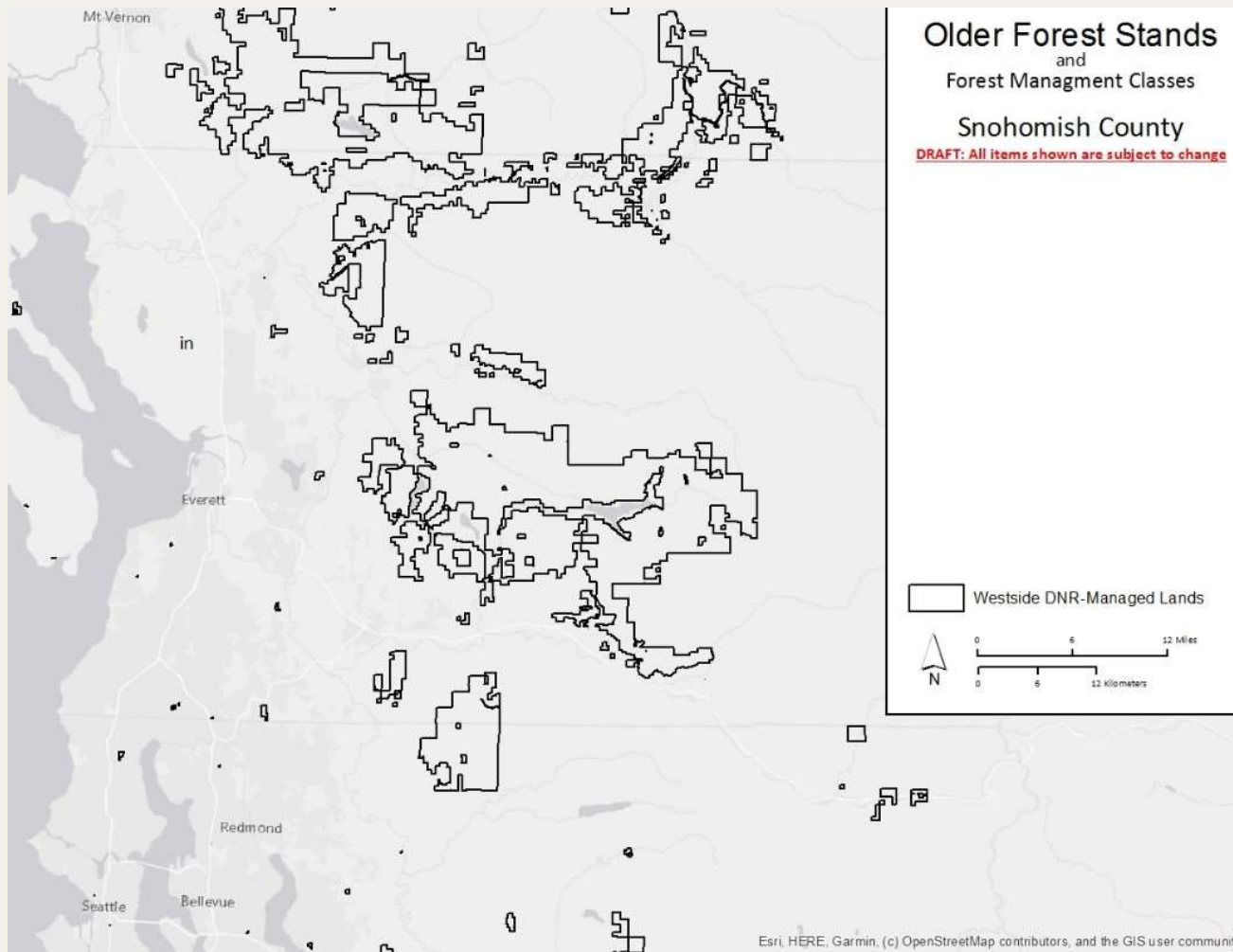


DNR Trust Lands in Snohomish County

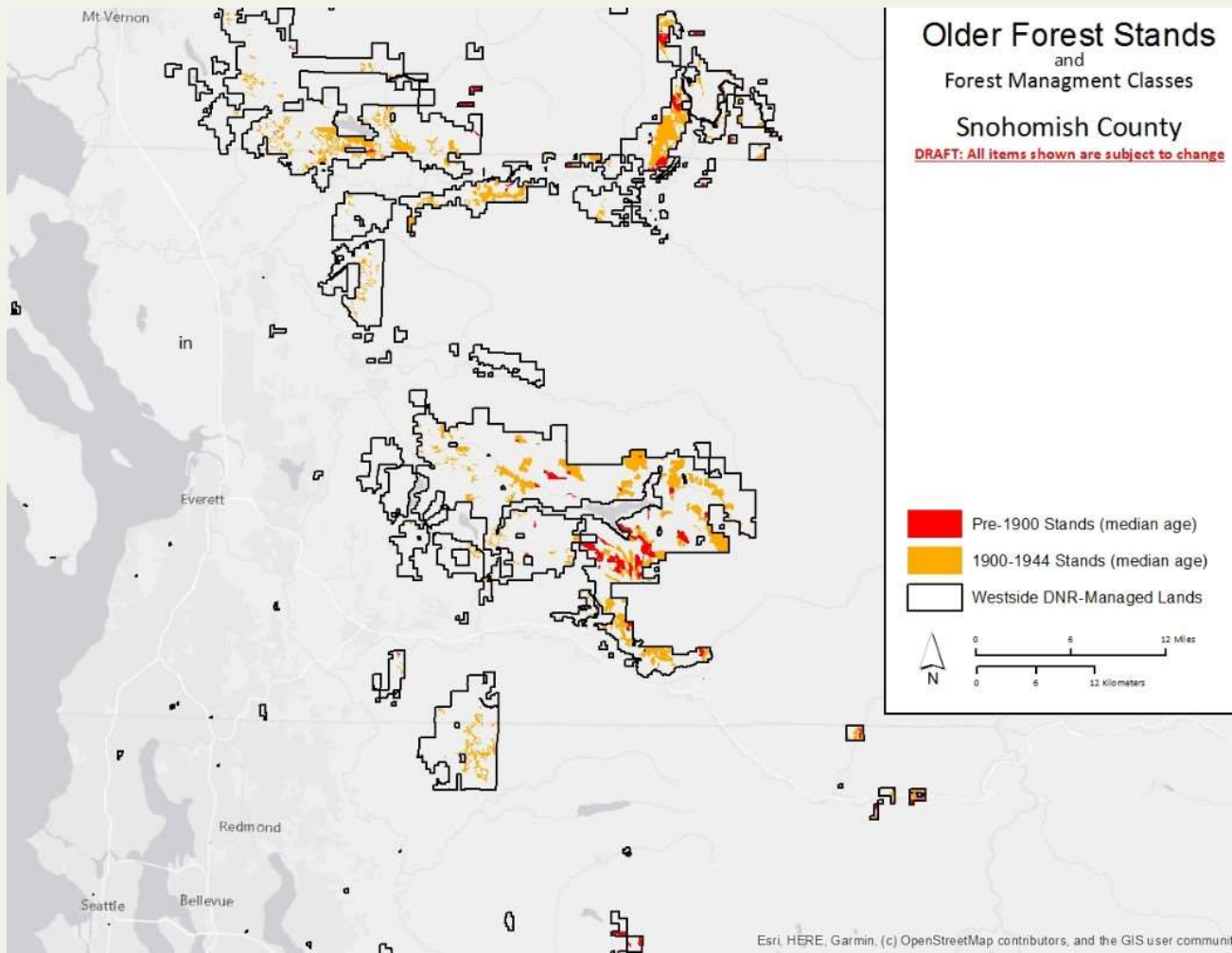
	Forested	Non-forested	Total Acres
01 - State Forest Transfer	59,961	2,519	62,480
02 - State Forest Purchase	1,646	35	1,681
03 - Common School and Indemnity	37,902	2,289	40,191
04 - Agricultural School	2,758	110	2,868
06 - Charitable/Ed/Penal & Reformatory Inst.	4,185	446	4,631
07 - Capitol Grant	2,866	169	3,035
08 - Normal School	611	10	622
10 - Scientific School	2,017	92	2,109
11 - University	324	16	339
Total Acres	112,270	5,686	117,956



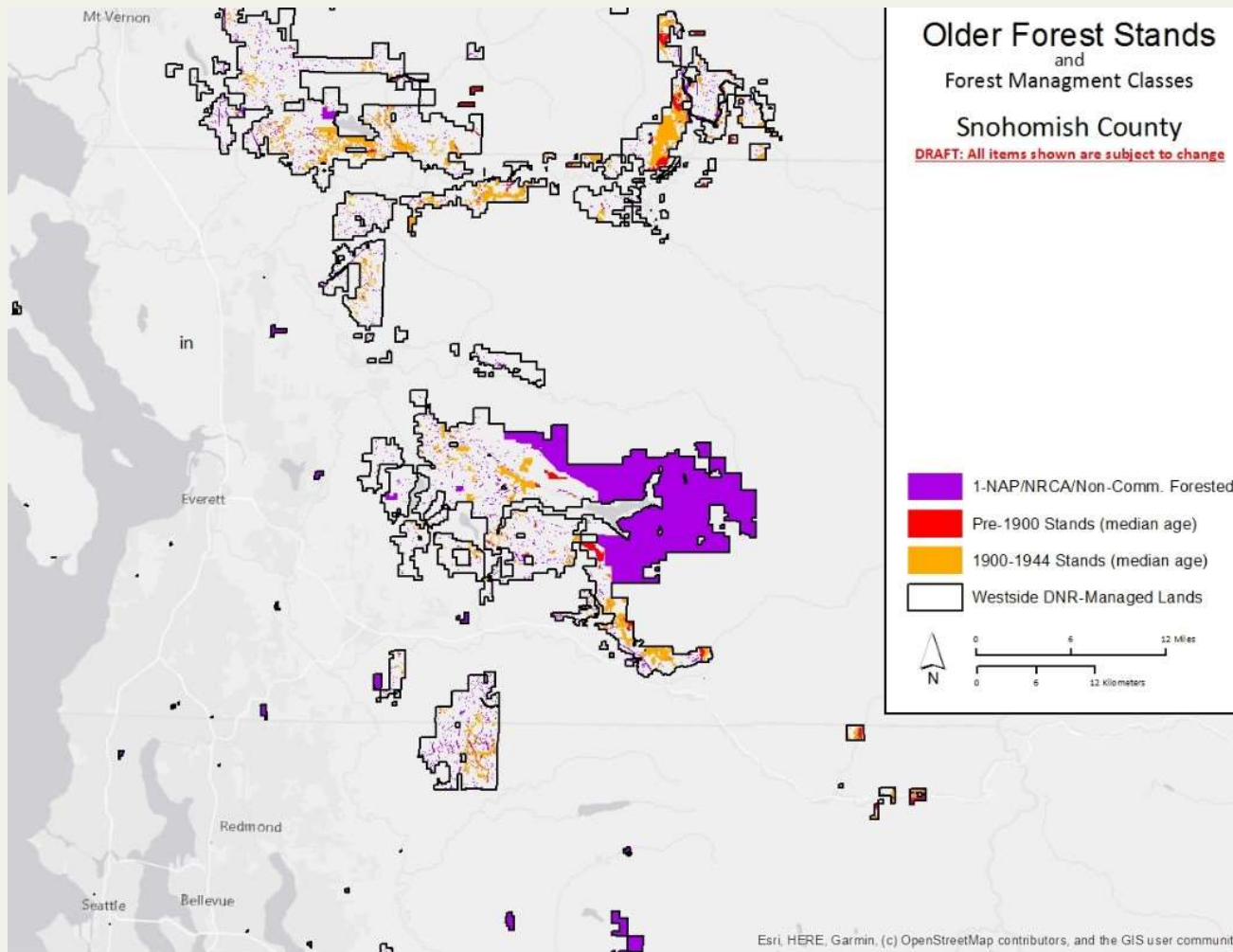
Forest Management Class in Snohomish



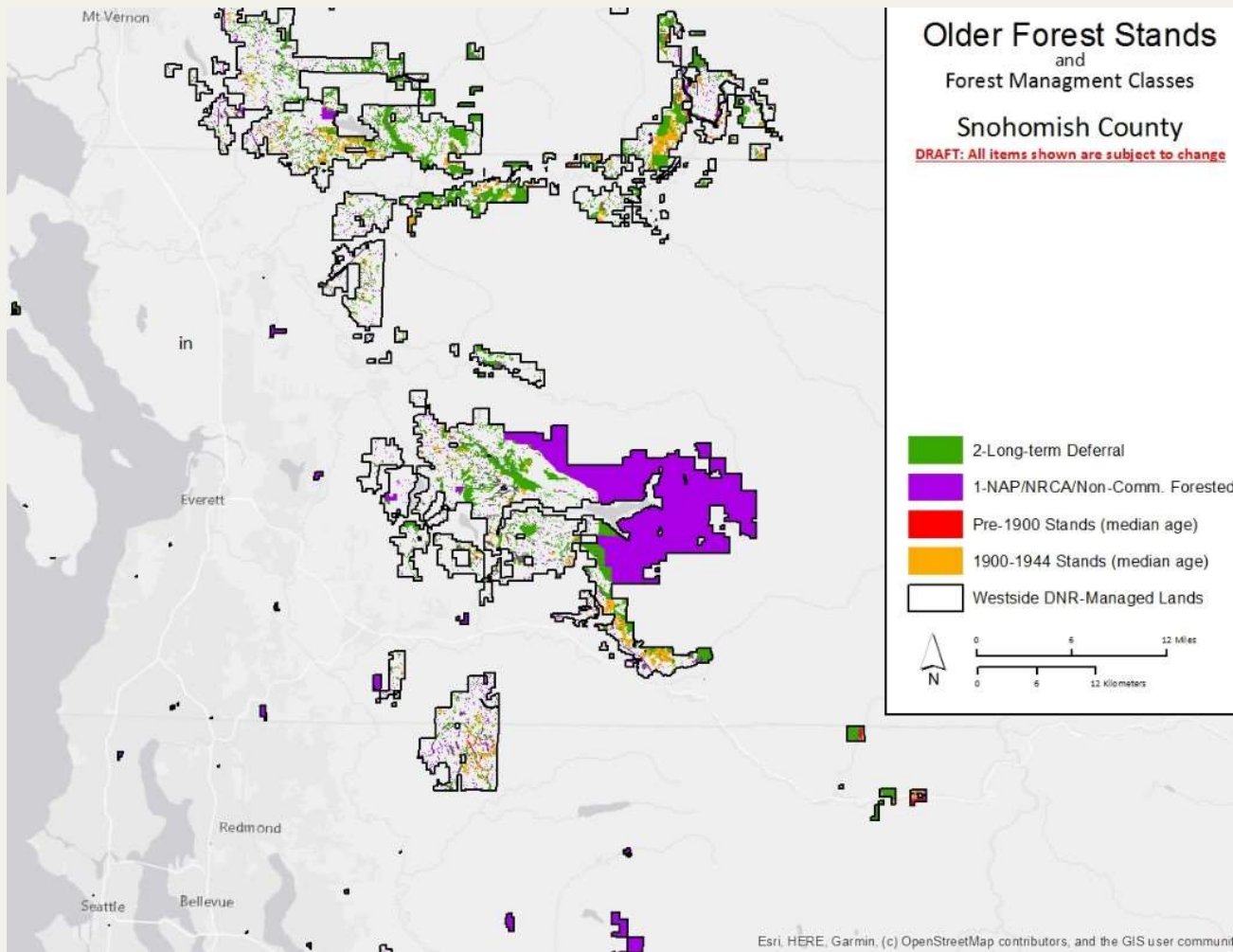
Forest Management Class in Snohomish



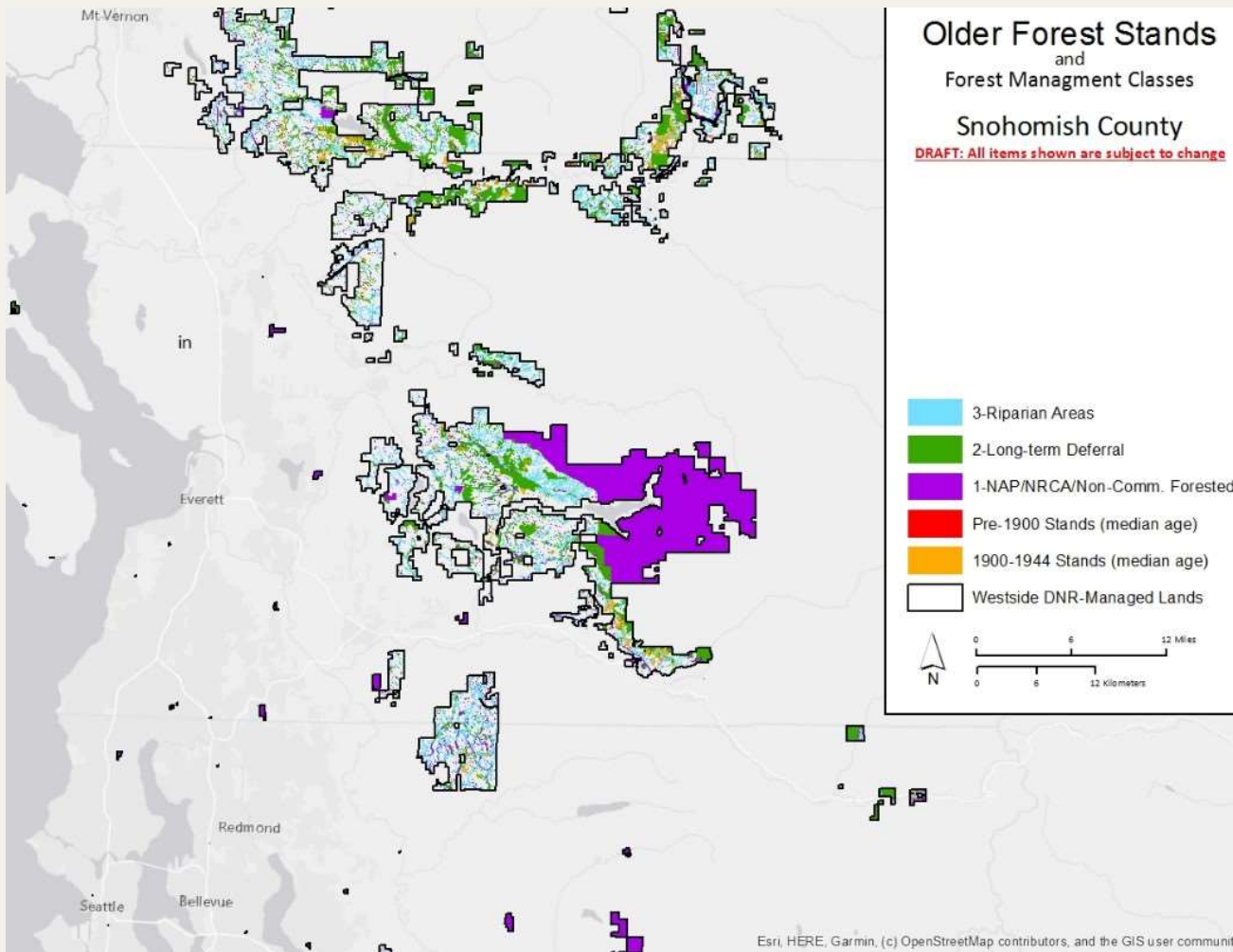
Forest Management Class in Snohomish



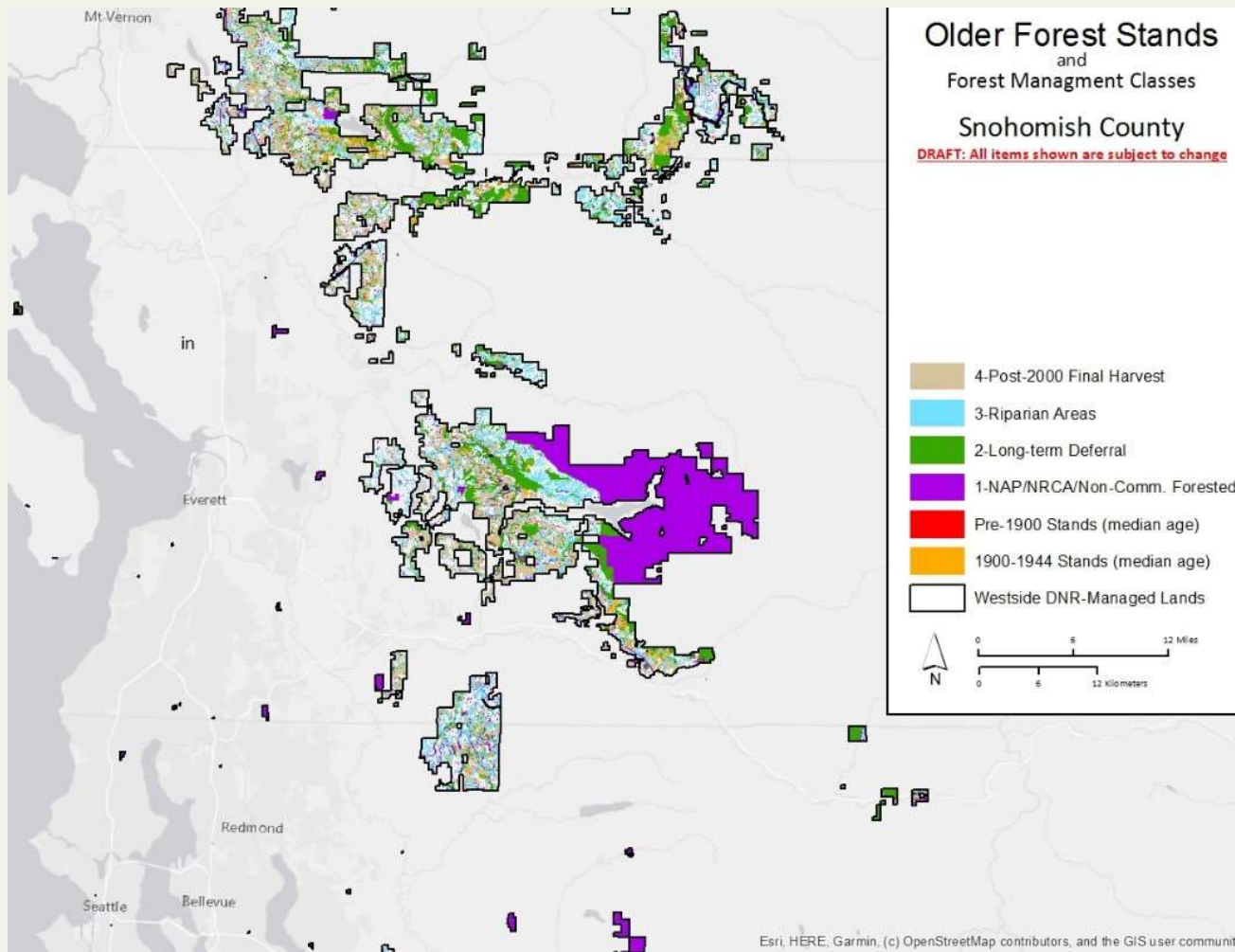
Forest Management Class in Snohomish



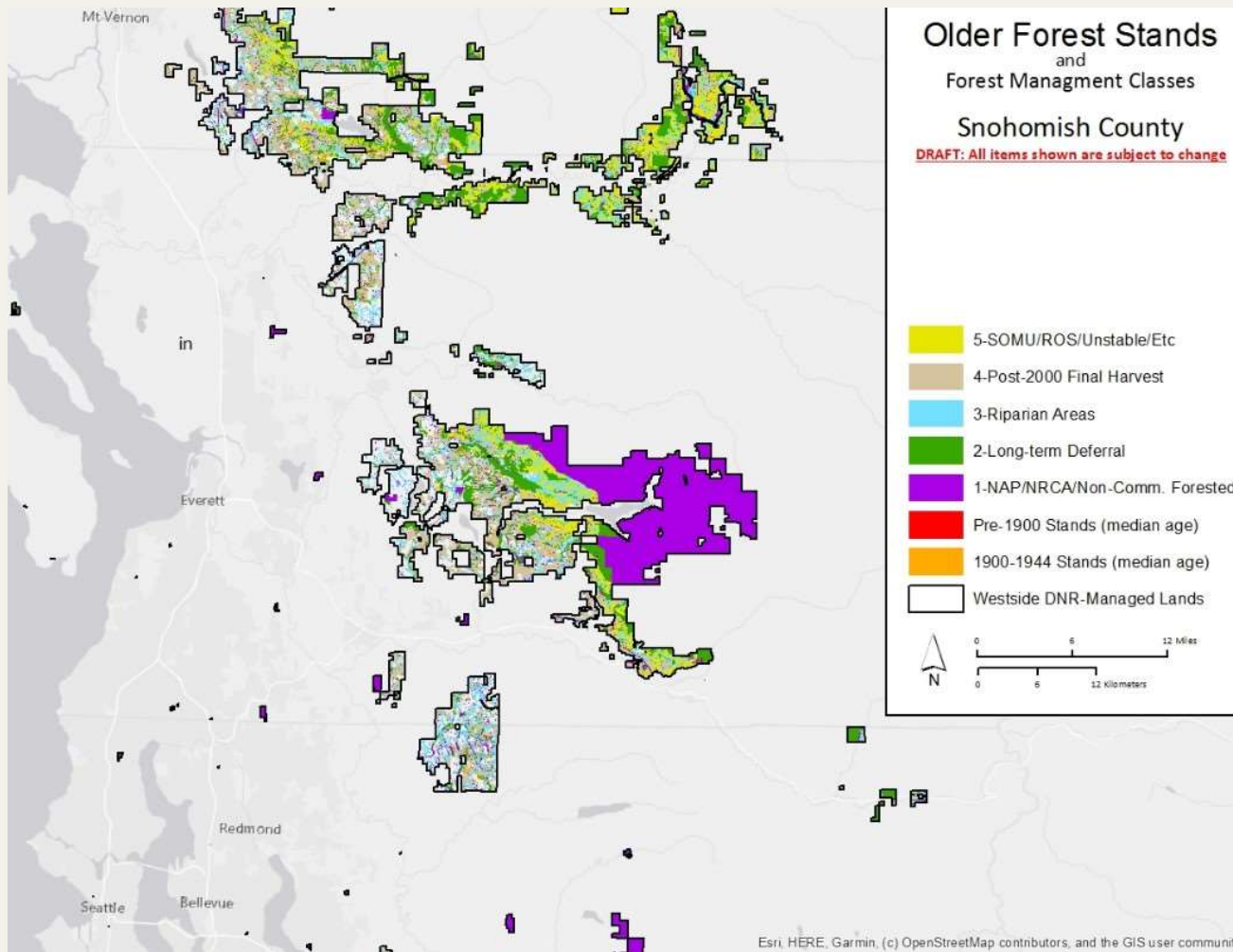
Forest Management Class in Snohomish



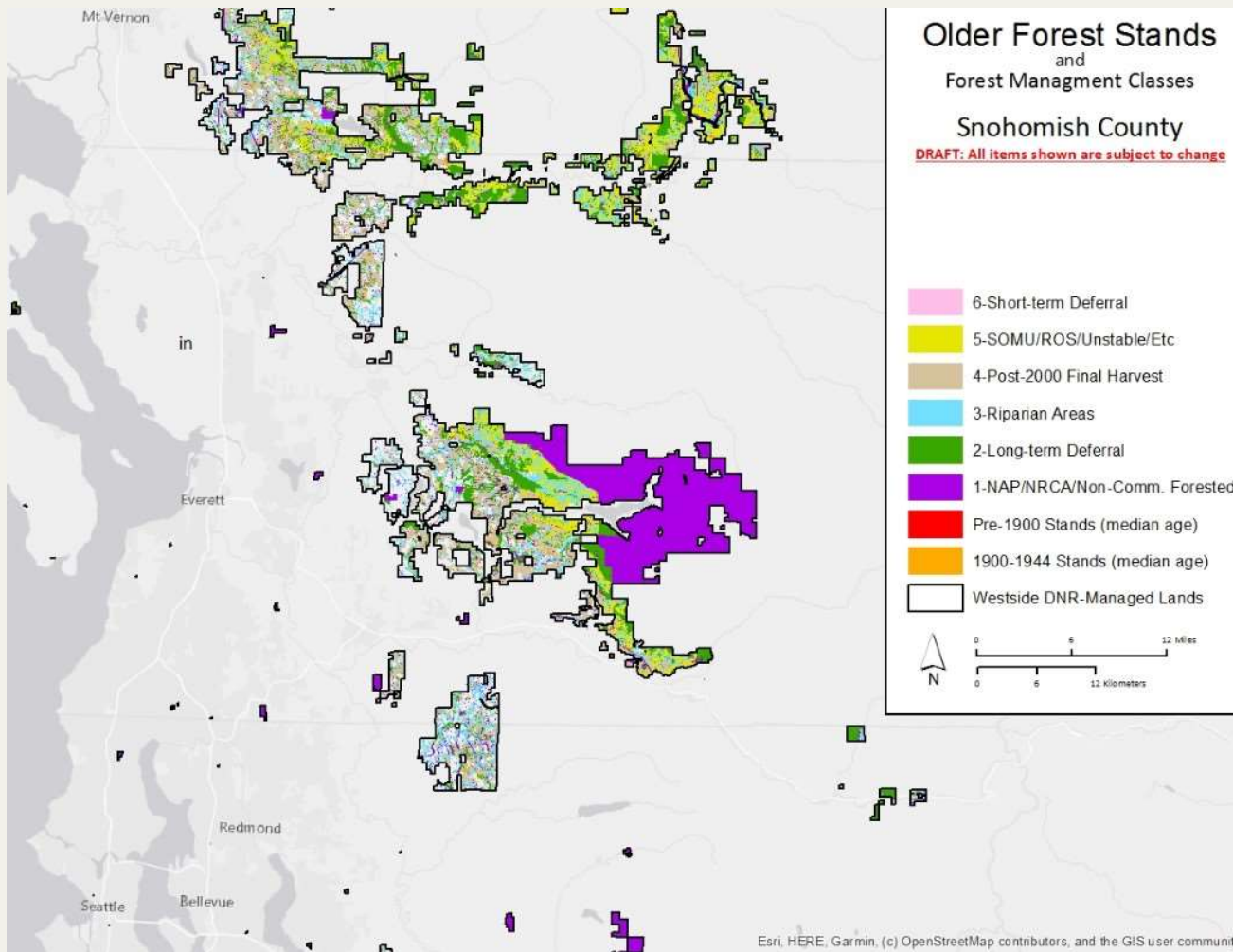
Forest Management Class in Snohomish



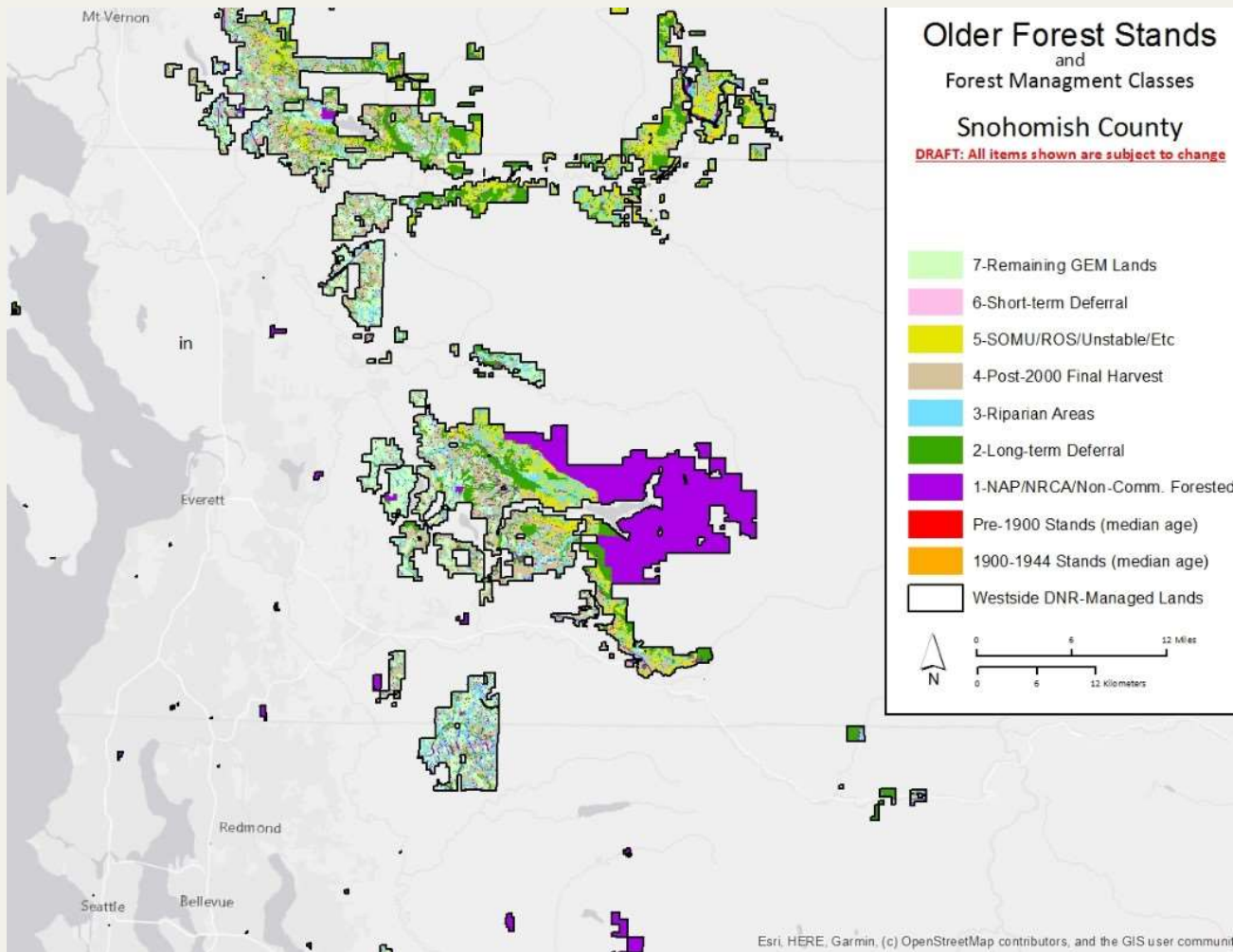
Forest Management Class in Snohomish



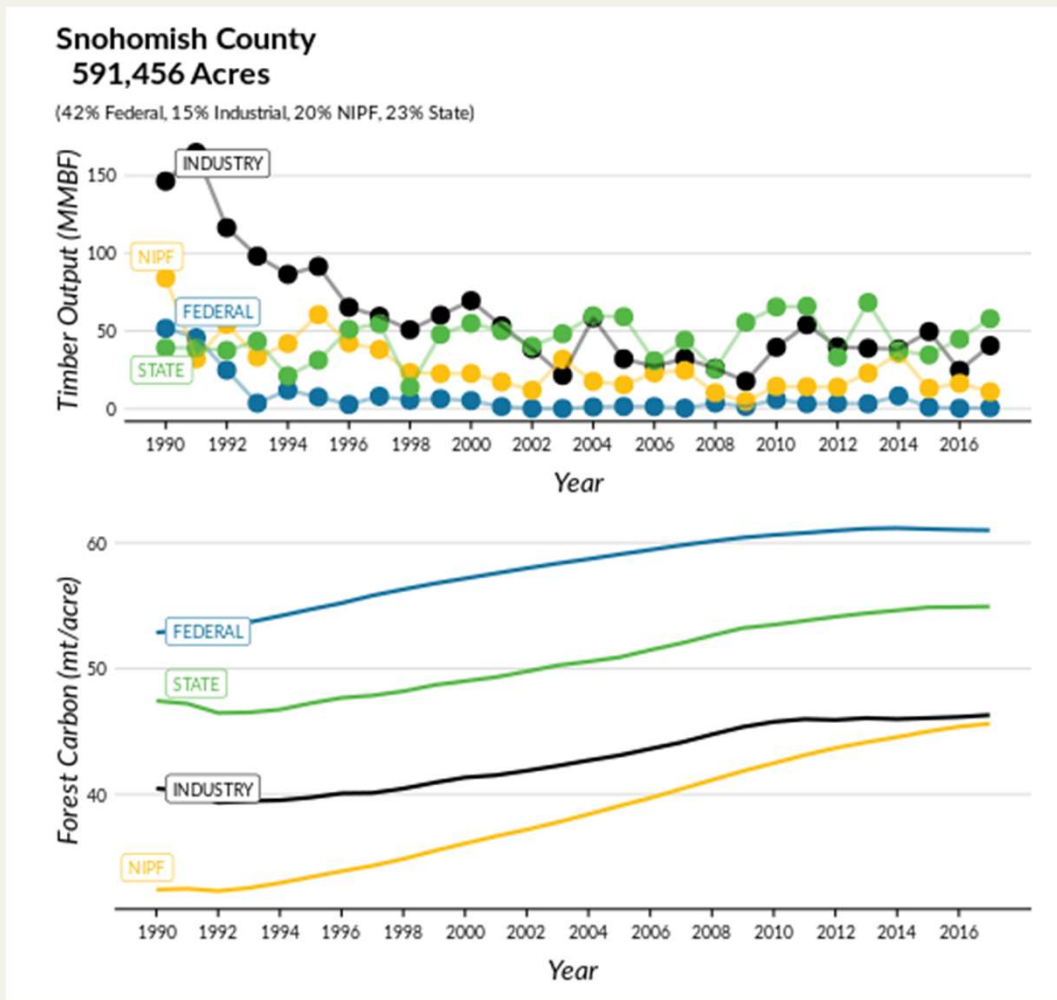
Forest Management Class in Snohomish



Forest Management Class in Snohomish



Timber and Carbon in Snohomish County



Carbon Sequestration Forest: \$70 million

- For purchase of forestland in counties west of the crest of the Cascade mountains, all of Skamania county, and the western portion of Klickitat county.
- When feasible and appropriate, the department should prioritize the purchase of lands at risk of conversion to a nonforested use.
- Up to 2,000 acres of structurally complex, carbon dense forestland currently existing on state trust lands may be transferred out of trust status with, prior to the transfer, a letter of support issued to the department by the legislative authority of the county in which the forestland is located.