

Spring 2022 Open Space Applications



PDS Recommendations
Snohomish County Council Briefing
April 2022

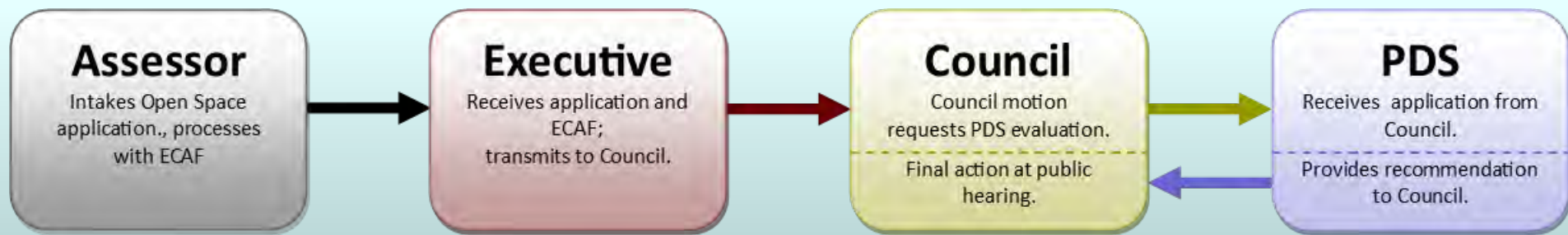
Open Space Program

- Open Space Taxation Act - Chapter 84.34 RCW
 - Purpose is to conserve adequate open space lands for production of food and forest crops, and preserve natural and scenic resources
 - Participating properties are valued based on current use
- Three Open Space Classifications:
 - Open Space General (OS-G)
 - Open Space General – Farm & Agriculture Conservation (OS-FAC)
 - Open Space Farm and Agriculture (OS-FA)
 - Open Space – Timber (OS-T)

Open Space Program

- Chapter 4.28 SCC – Open Space policies and procedures
 - Implements the Open Space Taxation Act
 - Applications must meet one of 20 criteria in SCC 4.28.040
- PDS evaluates OS-G, OS-FAC, and OS-T applications
- County Council, after a public hearing, approves or denies OS-G, OS-FAC, and OS-T applications
- Assessor approves OS-FA applications

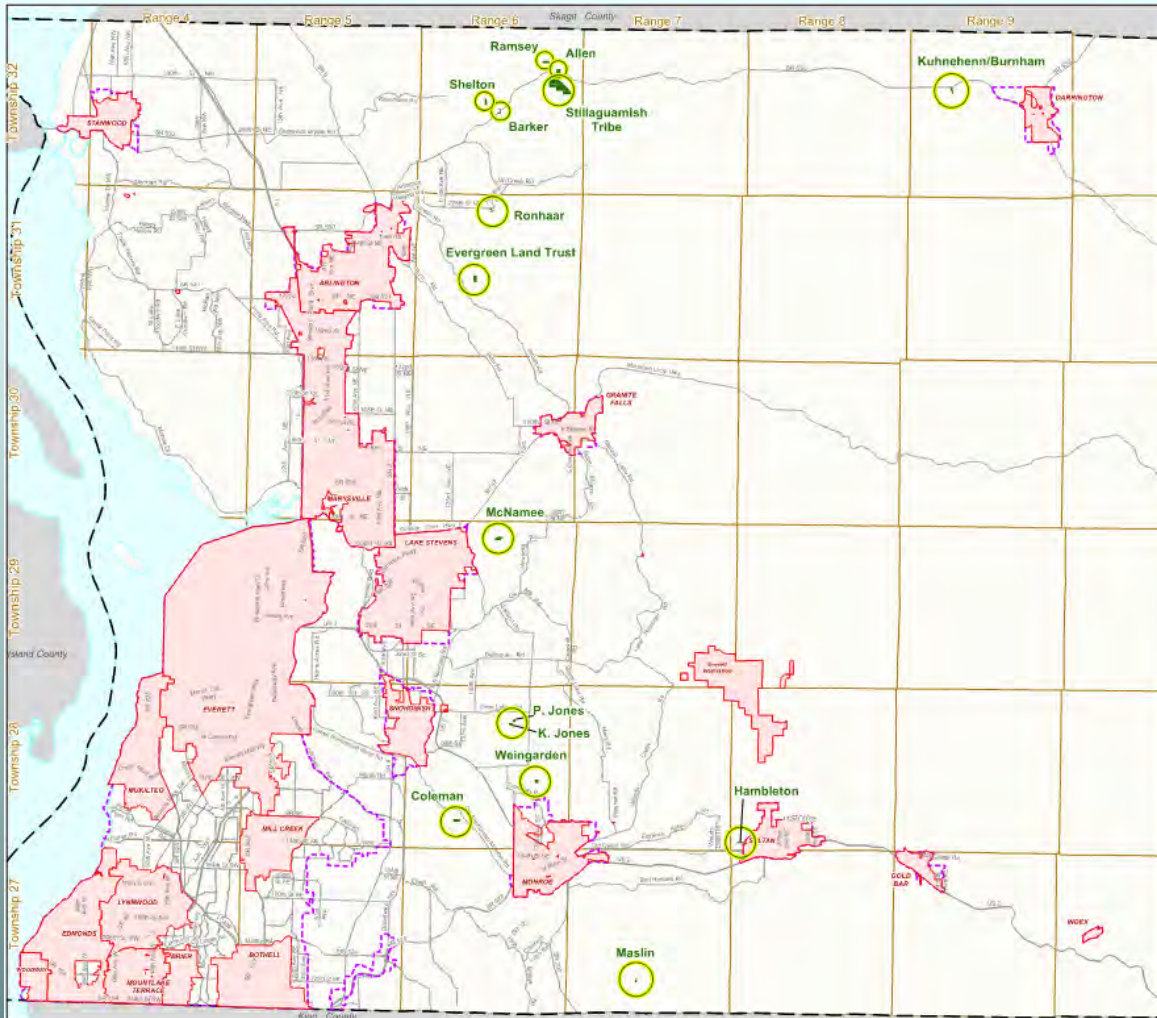
Open Space Program Administrative Process



Spring 2022 Open Space Applications

- Fifteen applications
- The requests are new classifications and reclassifications
- Requests would add 29.29 acres to the Open Space Program and would reclassify 257.31 acres within the Program

Spring 2022 Applications Countywide Map



Snohomish County Spring 2022 Open Space Applications

- Legend
- Application Property
 - Incorporated City
 - Urban Growth Area Boundary
 - Township-Range Grid



All maps, data, and information herein ("Data") are for informational purposes only and are not to be considered an official statement, or representation of the Snohomish County Code. Amendments and updates to the Data, together with other applicable County Code provisions, may apply which are not depicted herein. Snohomish County reserves no responsibility or warranty concerning the content, accuracy, currency, completeness or quality of the Data and/or information and hereby disclaims any liability or responsibility of third parties for any damages, loss, claims or liability arising out of any use, direct or indirect, based on the Data. Washington State Code, Ch. 43.70 RCW, prohibits state and/or agencies from providing access to their information resources for use for commercial purposes, but no commercial use may be made of any Data containing information obtained herein.

Produced by Snohomish County Department of Planning and Development Services, CartographyGIS

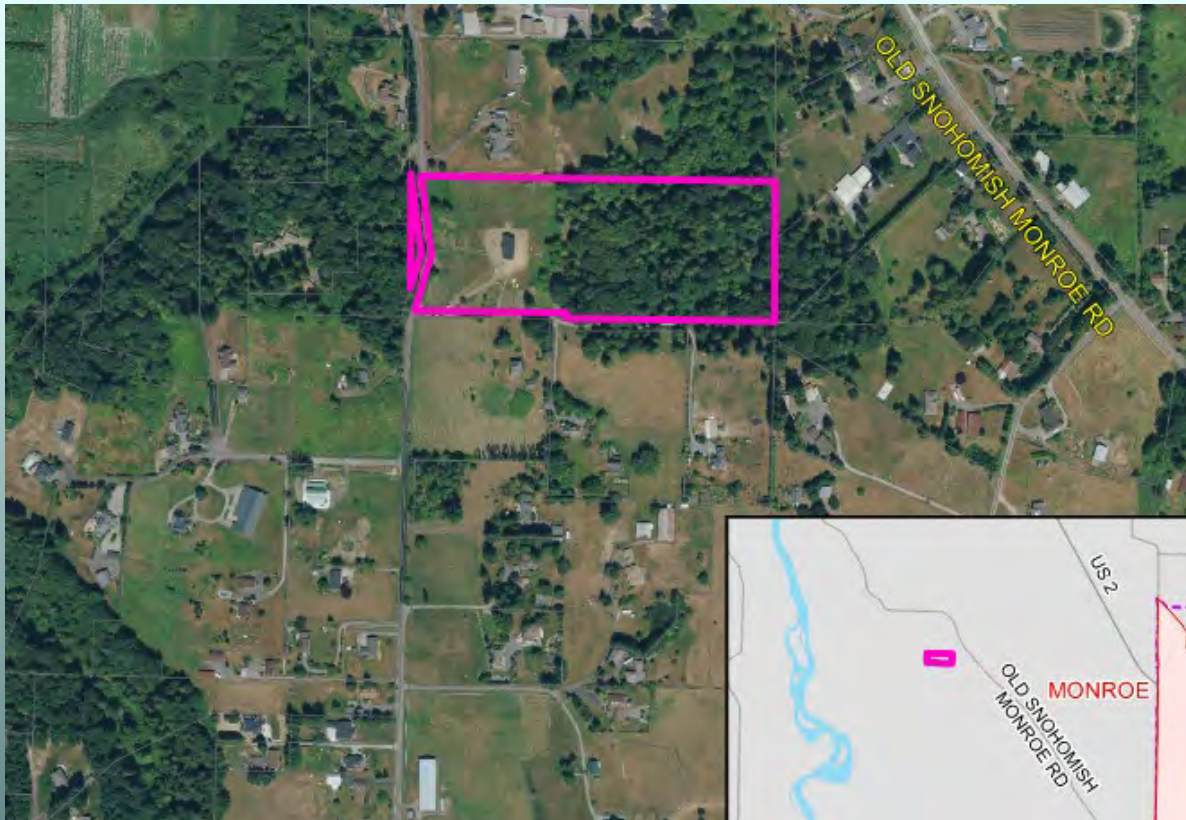


Coleman (3223)

Proposal: Classify to Open Space-General

Location: Approximately two and a half miles west of the City of Monroe

Requested Acreage: 10.00



Coleman (3223)

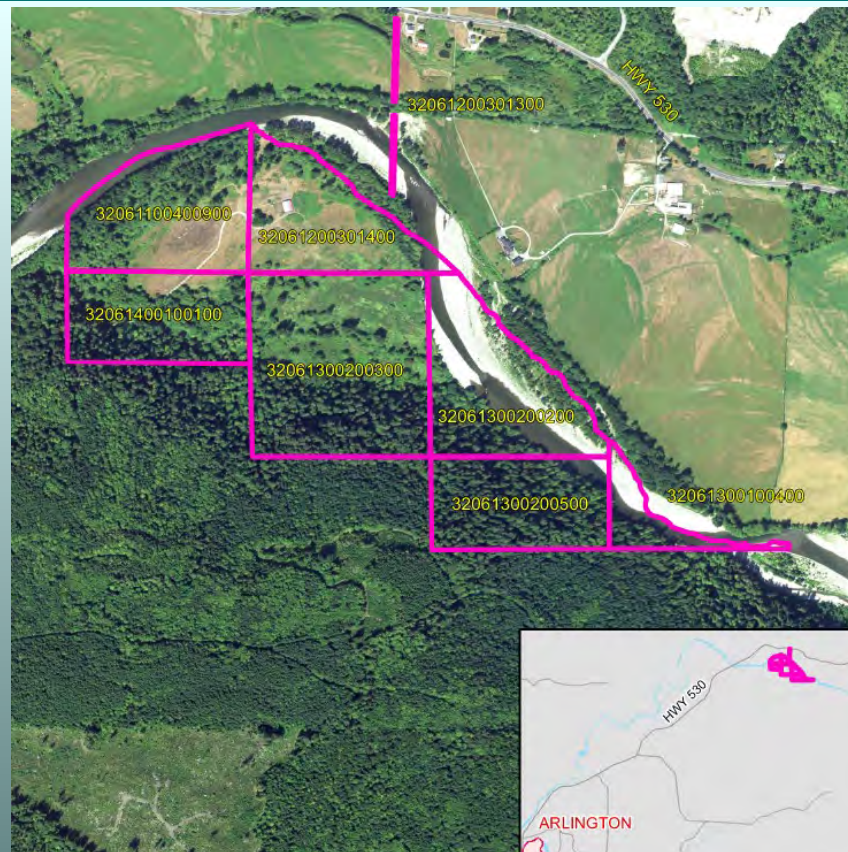
- 7.49 acres of requested acreage meets state & county open space requirements
- Consistent with county criteria for **Open Space-General** classification:
 - (14) – Contains wetland areas
- PDS recommends approval of 7.49 acres of the 10 acres requested

Stillaguamish Tribes (3225)

Proposal: Reclassify to Open Space-General

Location: Approximately seven miles northeast of the City of Arlington

Requested Acreage: 143.41



Stillaguamish Tribes (3225)

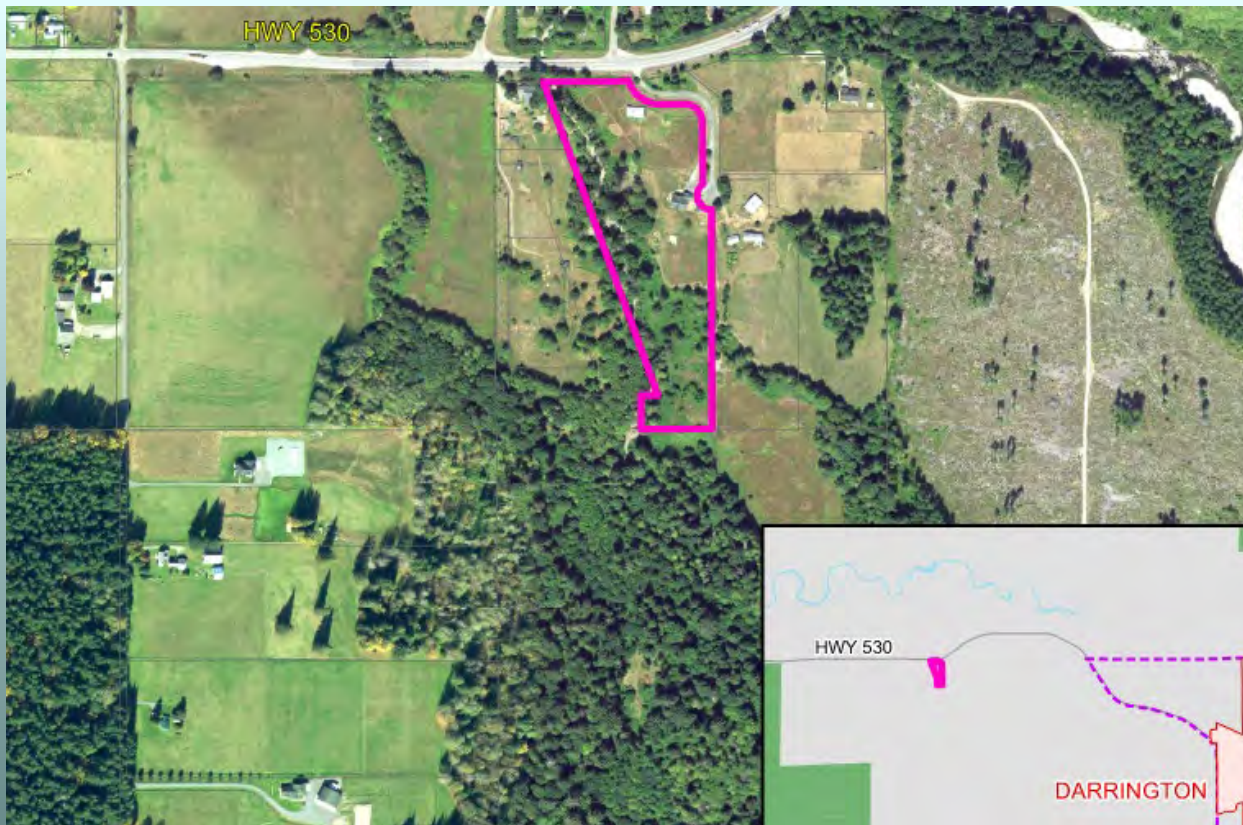
- Requested acreage meets state & county open space requirements
- Consistent with county criteria for **Open Space-General** classification:
 - (3) – Presence of threatened or endangered species
- PDS recommends approval

Kuhnehenn/Burnham (3226)

Proposal: Reclassify to Open Space - General Farm & Agriculture Conservation

Location: Approximately two and a half miles west of the City of Darrington

Requested Acreage: 9.23



Kuhnehenn/Burnham (3226)

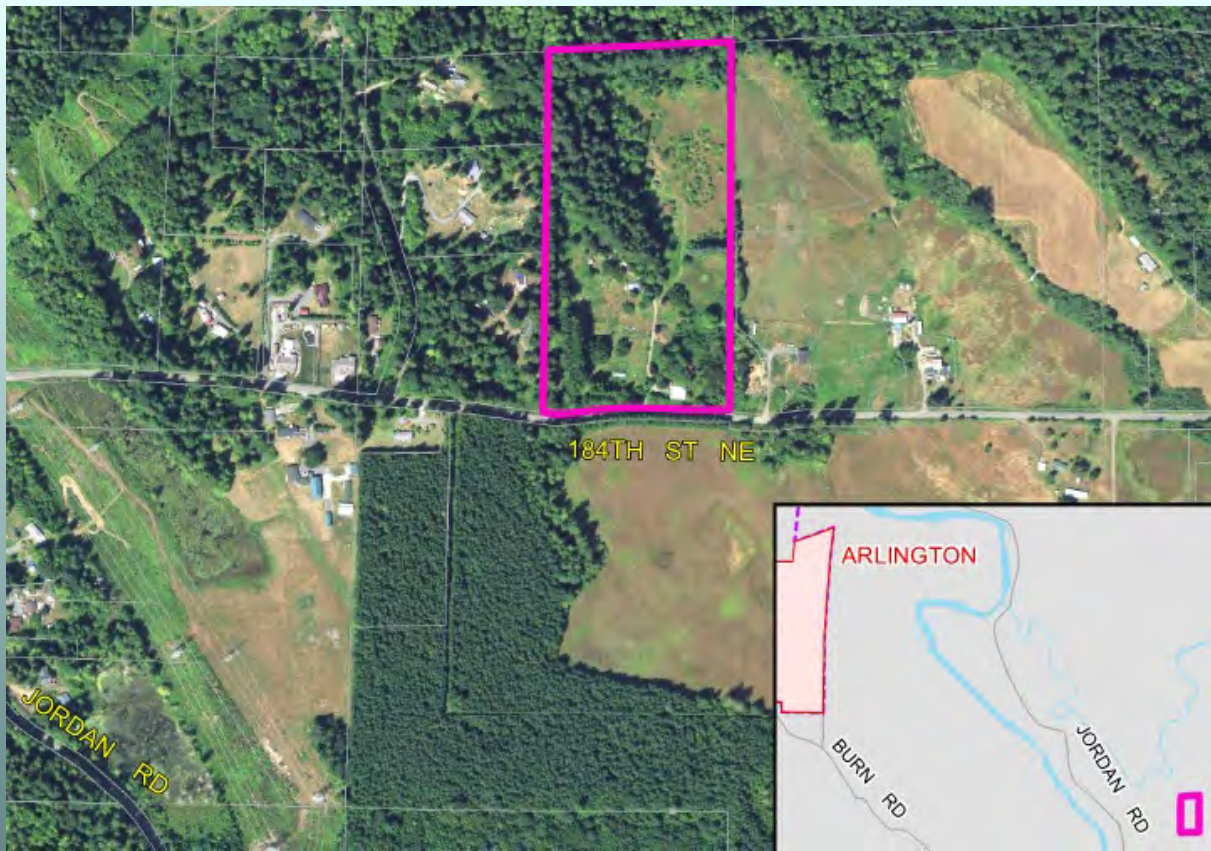
- Requested acreage meets state & county open space requirements
- Consistent with county criteria for **Open Space-General-Farm and Agriculture Conservation** classification:
 - (20)(a) – No longer meets the income requirements for Open Space – Farm & Agriculture
- PDS recommends approval

Evergreen Land Trust (3227)

Proposal: Reclassify to Open Space - General Farm & Agriculture Conservation

Location: Approximately two and a half miles east of the City of Arlington

Requested Acreage: 19.42



Evergreen Land Trust (3227)

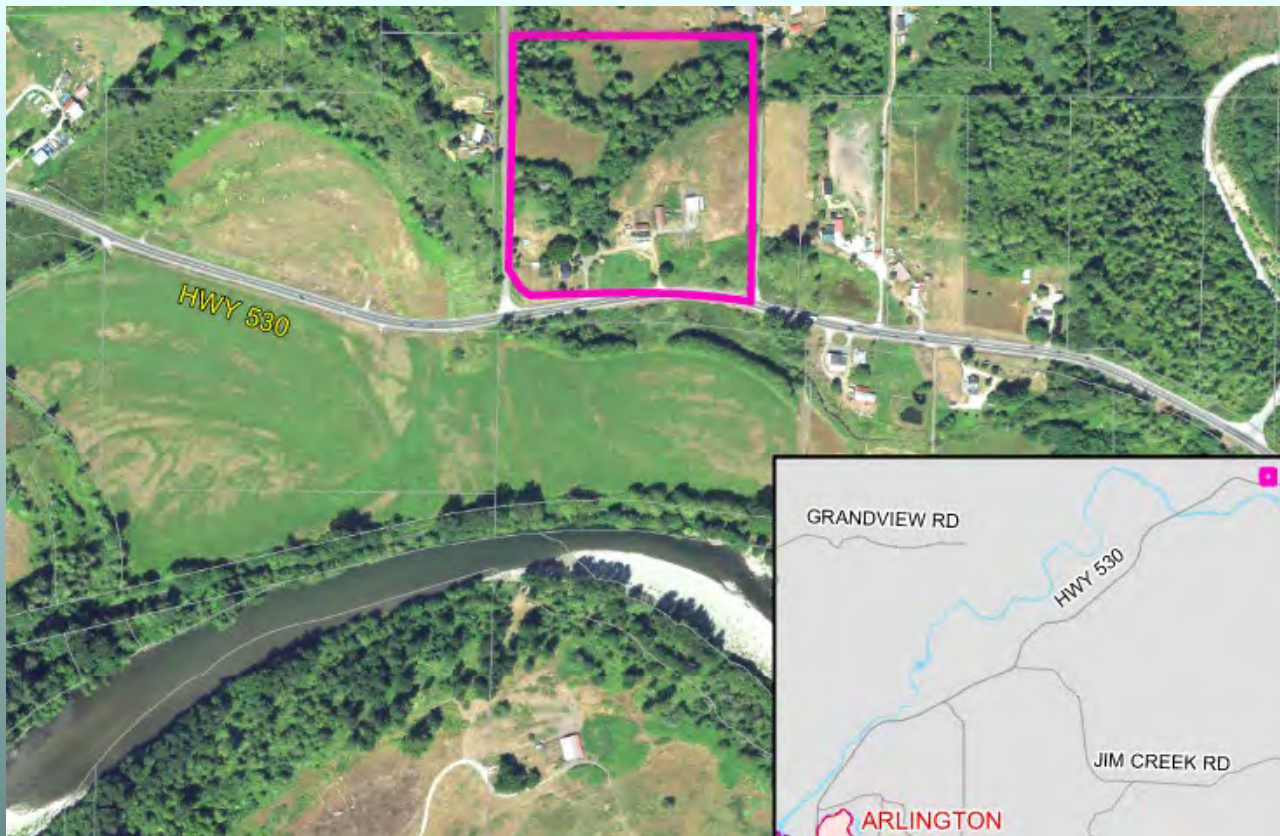
- Requested acreage meets state & county open space requirements
- Consistent with county criteria for **Open Space-General-Farm and Agriculture Conservation** classification:
 - (20)(a) – No longer meets the income requirements for Open Space – Farm & Agriculture
- PDS recommends approval

Allen (3228)

Proposal: Reclassify to Open Space - General Farm & Agriculture Conservation

Location: Approximately seven miles northeast of the City of Arlington

Requested Acreage: 15.47



Allen (3228)

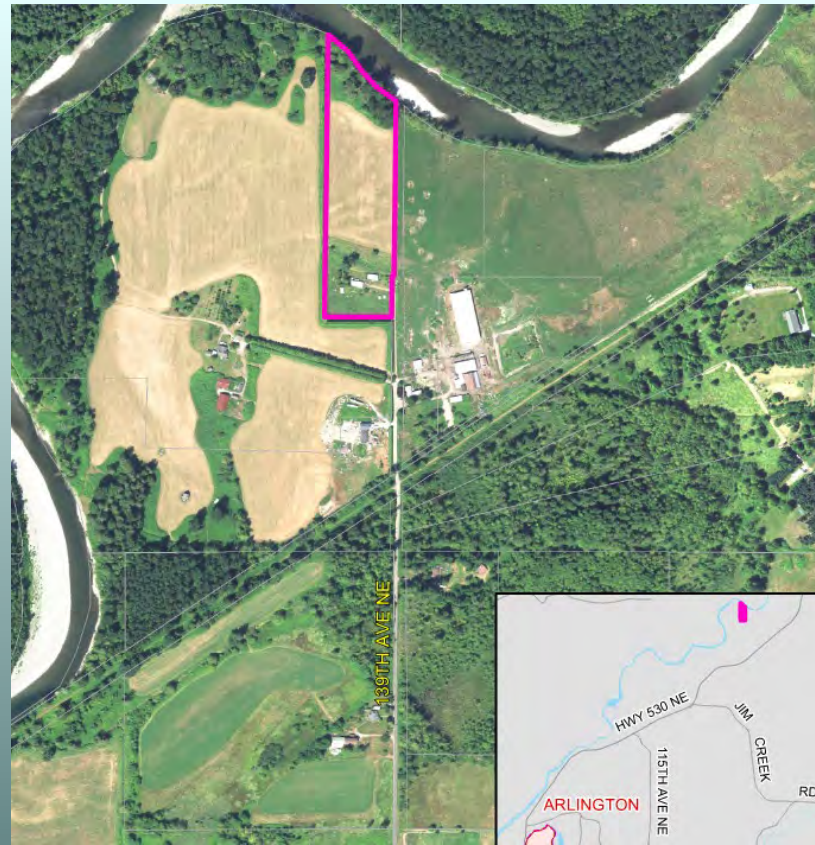
- Requested acreage meets state & county open space requirements
- Consistent with county criteria for **Open Space-General-Farm and Agriculture Conservation** classification:
 - (20)(a) – No longer meets the income requirements for Open Space – Farm & Agriculture
- PDS recommends approval

Shelton (3229)

Proposal: Reclassify to Open Space - General Farm & Agriculture Conservation

Location: Approximately four and a half miles northeast of the City of Arlington

Requested Acreage: 9.00



Shelton (3229)

- Requested acreage meets state & county open space requirements
- Consistent with county criteria for **Open Space-General-Farm and Agriculture Conservation** classification:
 - (20)(a) – No longer meets the income requirements for Open Space – Farm & Agriculture
- PDS recommends approval

Weingarden (3230)

Proposal: Classify as Open Space - General

Location: Approximately one and a half miles north of the City of Monroe

Requested Acreage: 9.7



Weingarden (3230)

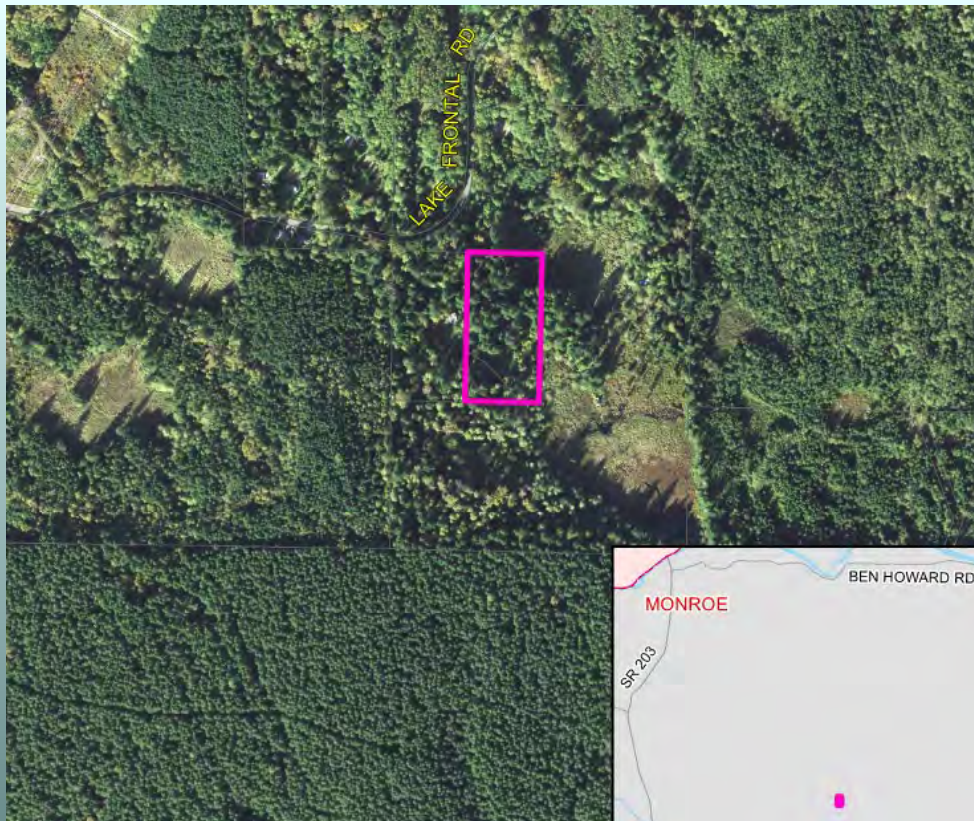
- 8.7 acres of requested acreage meets state & county open space requirements
- Consistent with county criteria for **Open Space-General** classification:
 - (11)(d) – Historic feature on site
- PDS recommends approval of 8.7 acres of the 9.7 acres requested

Maslin (3231)

Proposal: Classify to Open Space - General

Location: Approximately two and a half miles west of the City of Darrington

Requested Acreage: 5.00



Maslin (3231)

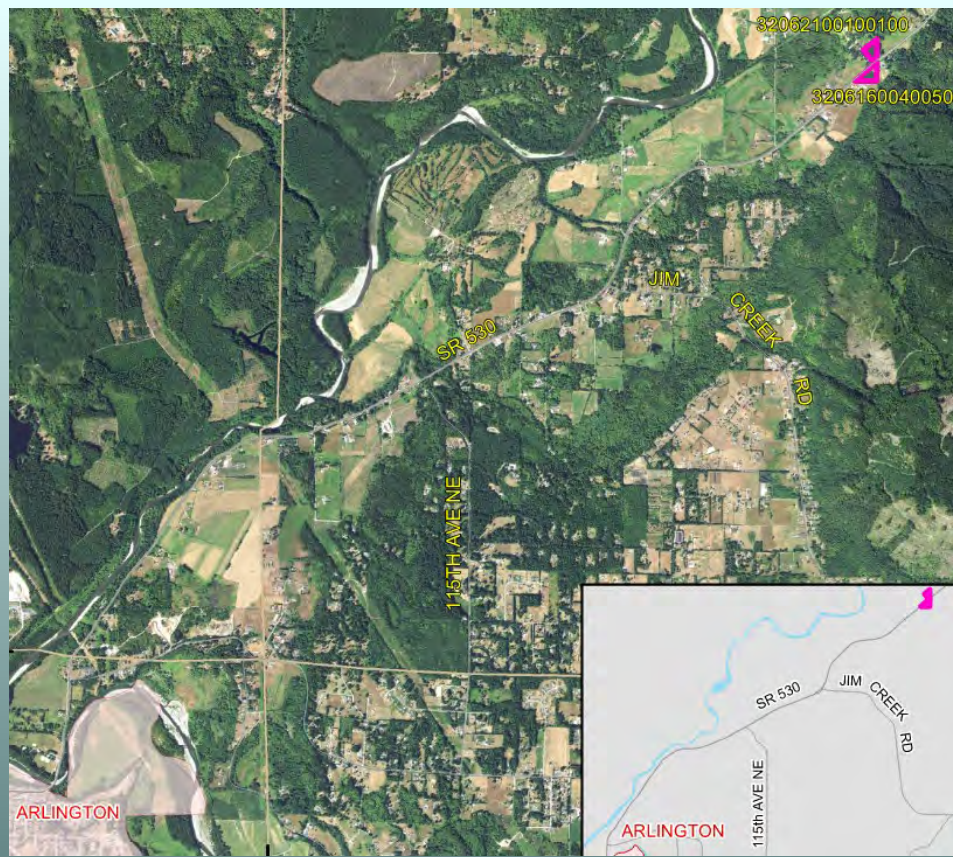
- 1.25 acres of the requested acreage meets state & county open space requirements
- Consistent with county criteria for **Open Space-General-Farm and Agriculture Conservation** classification:
 - (19) – Protective Buffers required by GMA
- PDS recommends approval of 1.25 acres of the 5 acres requested

Barker (3232)

Proposal: Reclassify to Open Space - General Farm & Agriculture Conservation

Location: Approximately four and a half miles northeast of the City of Arlington

Requested Acreage: 5.8



Barker (3232)

- Requested acreage meets state & county open space requirements
- Consistent with county criteria for **Open Space-General-Farm and Agriculture Conservation** classification:
 - (20)(a) – No longer meets the income requirements for Open Space – Farm & Agriculture
- PDS recommends approval

Hambleton (3233)

Proposal: Classify to Open Space - General

Location: Immediately adjacent to the west of the City of Sultan

Requested Acreage: 10.95



Hambleton (3233)

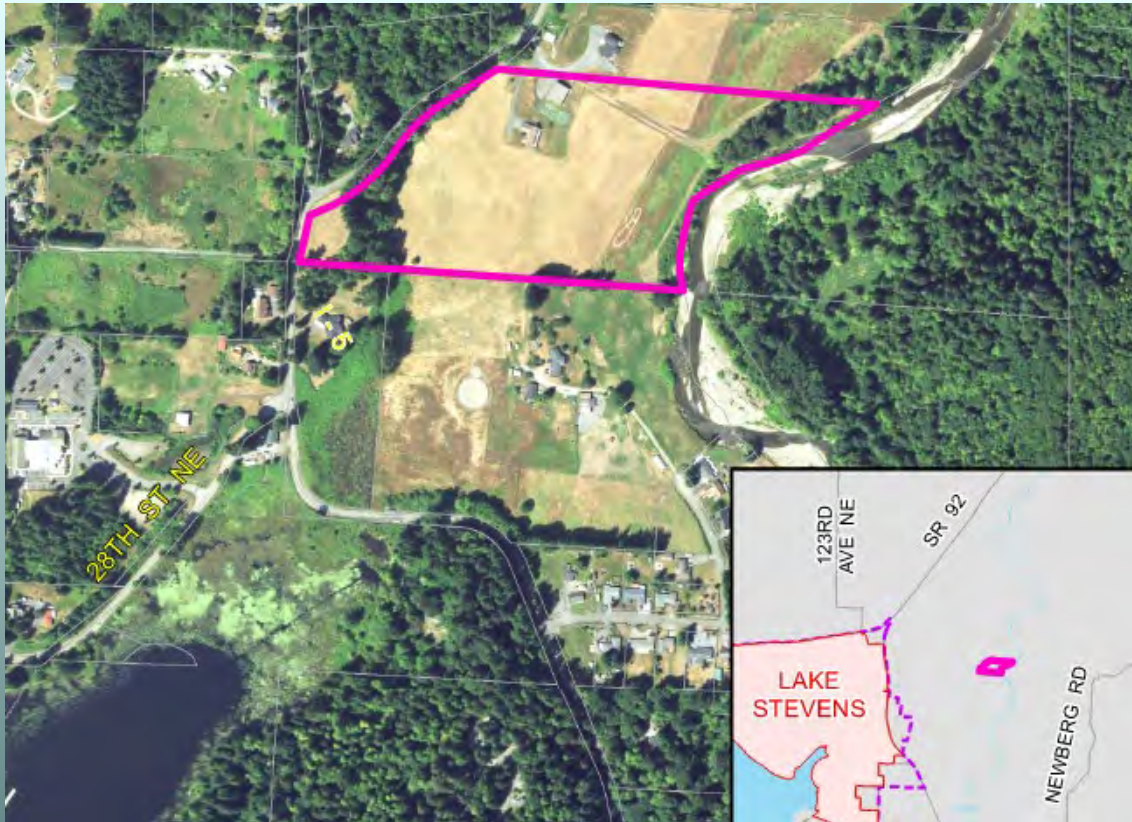
- Requested acreage meets state & county open space requirements
- Consistent with county criteria for **Open Space-General** classification:
 - (6) – Contains undeveloped shoreline environment
 - (14) – Wetlands of at least one quarter acre
- PDS recommends approval

McNamee (3234)

Proposal: Reclassify to Open Space - General Farm & Agriculture Conservation

Location: Approximately one mile east of the City of Lake Stevens

Requested Acreage: 19.90



McNamee (3234)

- Requested acreage meets state & county open space requirements
- Consistent with county criteria for **Open Space-General-Farm and Agriculture Conservation** classification:
 - (20)(a) – No longer meets the income requirements for Open Space – Farm & Agriculture
- PDS recommends approval

P. Jones (3235)

Proposal: Reclassify to Open Space - General Farm & Agriculture Conservation

Location: Approximately three miles east of the City of Snohomish

Requested Acreage: 6.00



P. Jones (3235)

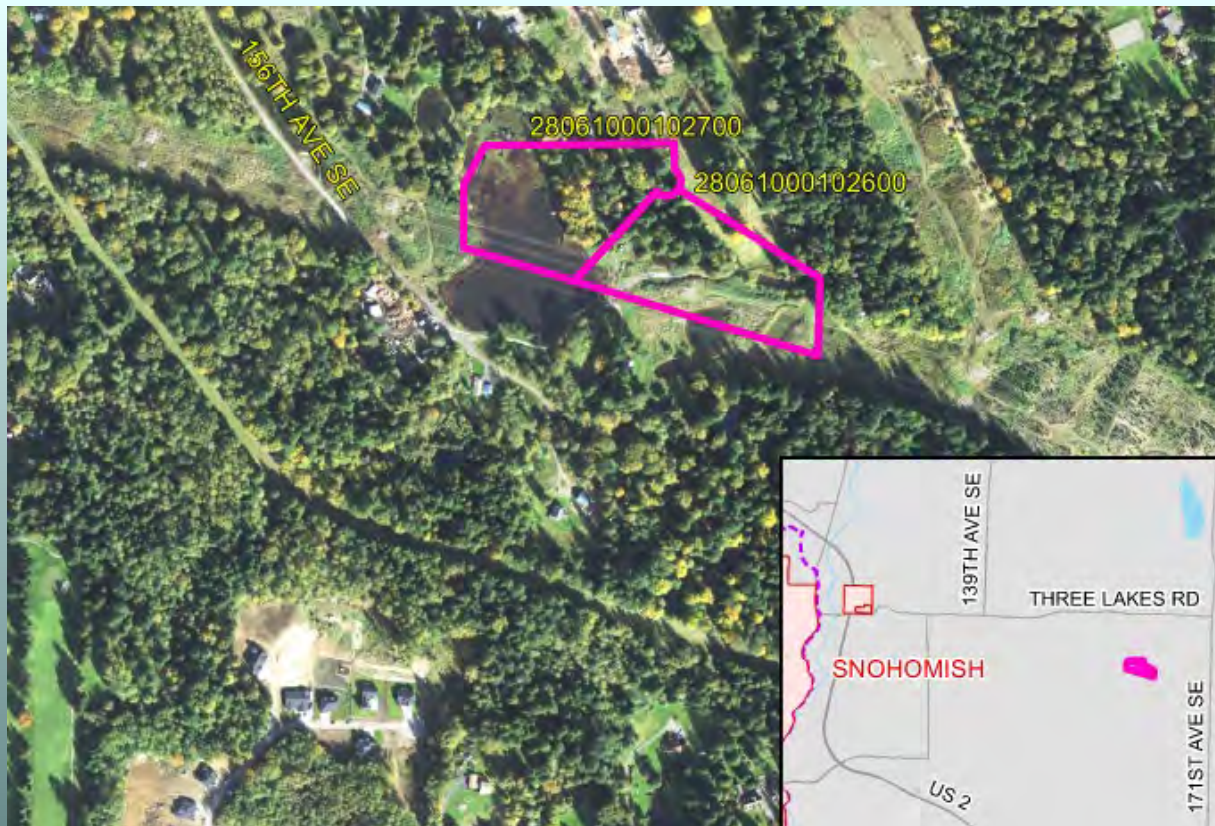
- Requested acreage meets state & county open space requirements
- Consistent with county criteria for **Open Space-General-Farm and Agriculture Conservation** classification:
 - (20)(a) – No longer meets the income requirements for Open Space – Farm & Agriculture
- PDS recommends approval

K. Jones (3236)

Proposal: Reclassify to Open Space - General Farm & Agriculture Conservation

Location: Approximately two and a half miles east of the City of Snohomish

Requested Acreage: 12.00



K. Jones (3236)

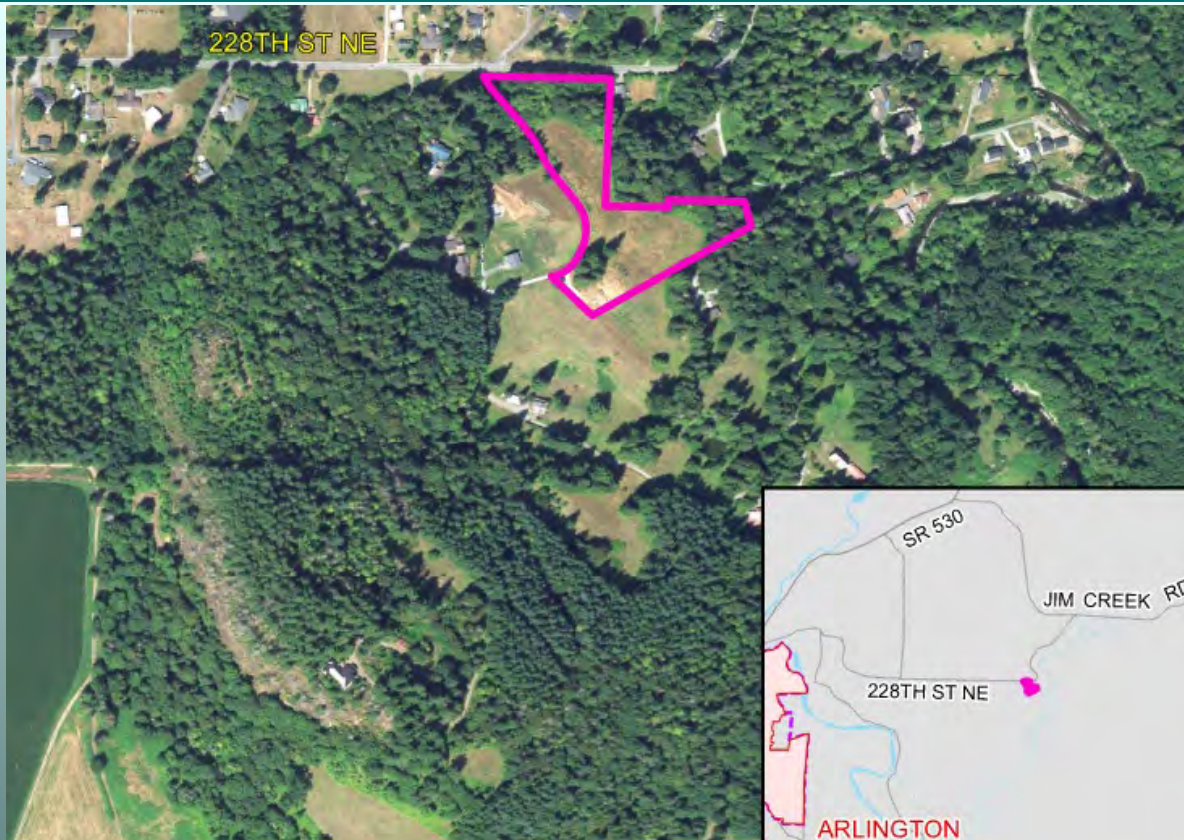
- Requested acreage meets state & county open space requirements
- Consistent with county criteria for **Open Space-General-Farm and Agriculture Conservation** classification:
 - (20)(a) – No longer meets the income requirements for Open Space – Farm & Agriculture
- PDS recommends approval

Ronhaar (3237)

Proposal: Reclassify to Open Space - General Farm & Agriculture Conservation

Location: Approximately three miles east of the City of Arlington

Requested Acreage: 4.47



Ronhaar (3237)

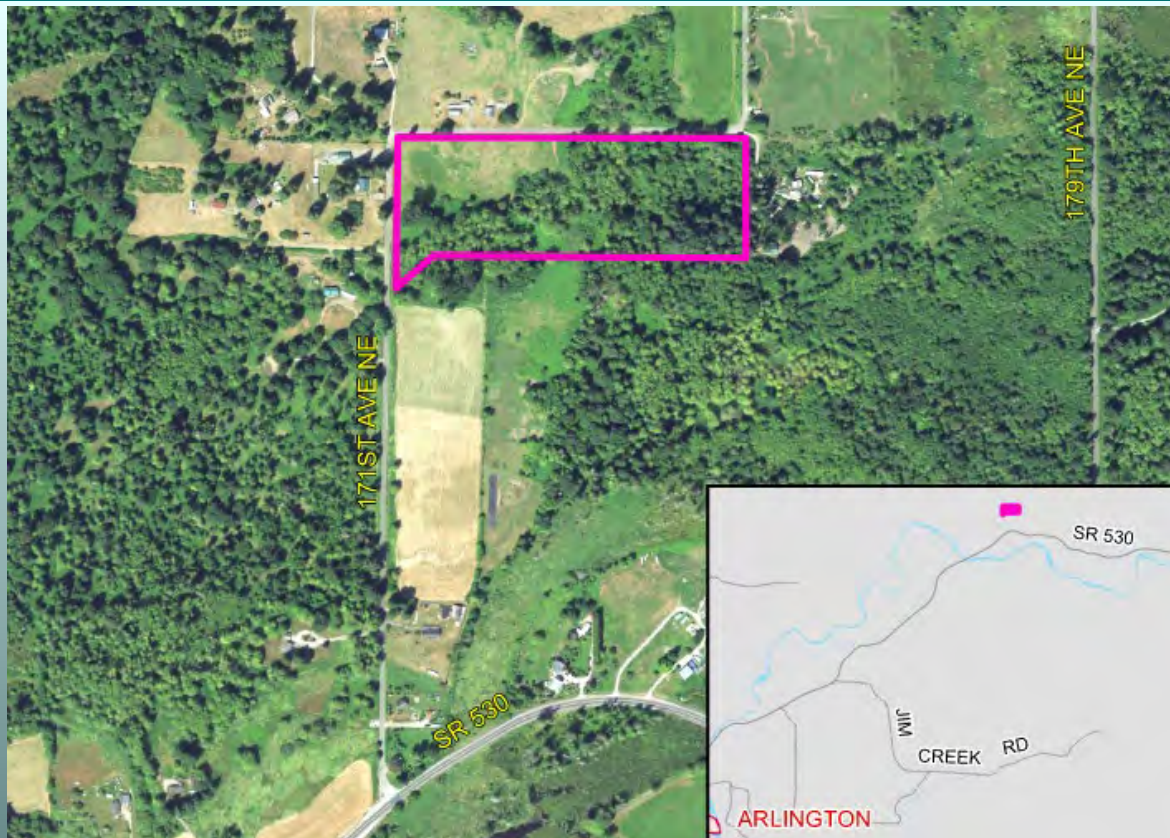
- Requested acreage meets state & county open space requirements
- Consistent with county criteria for **Open Space-General-Farm and Agriculture Conservation** classification:
 - (20)(a) – No longer meets the income requirements for Open Space – Farm & Agriculture
- PDS recommends approval

Ramsey (3239)

Proposal: Reclassify to Open Space - General Farm & Agriculture Conservation

Location: Approximately seven miles northeast of the City of Arlington

Requested Acreage: 13.10



Ramsey (3239)

- Requested acreage meets state & county open space requirements
- Consistent with county criteria for **Open Space-General-Farm and Agriculture Conservation** classification:
 - (20)(a) – No longer meets the income requirements for Open Space – Farm & Agriculture
- PDS recommends approval

Comments or Questions

