

Everett Link Extension County Council Briefing Agenda

May 18, 2021

Objective: Provide County Council a high-level briefing on the Sound Transit Everett Link Extension and OMF North.

- I. Introductions - Randy
 - A. Key County Team members – Roles & Responsibilities Diagram
 - B. Everett Link Extension Phase 1 and Schedule
 - C. Current Key Issues – Realignment (revenue gap and cost escalation)
 - D. Past Actions by County Council

- II. Phase 1 – Alternatives Development Phase / Next 18 months - Randy
 - A. Purpose/Objective – evaluation to identify a “preferred local alternative” in which ST Board will make decision and proceed with Environmental Phase (EIS).
 - B. Four (4) elements of Phase 1
 - 1) Light Rail Extension
 - 2) Station Locations
 - 3) Model Code Partnership
 - 4) Operation & Maintenance Facility (OMF) location

- III. Realignment – Funding Gap & Project Cost Escalation – Steve D.
 - A. Obligation to have an affordable plan - Prioritization and scheduling of projects
 - B. Jan '21 \$11 billion shortfall now \$7.9 bil - \$1.5 bil revenue loss, \$6.4 bil cost increases
 - C. Costs higher than ST3 plan. West Seattle/Ballard up \$5 billion
 - D. Cost Evaluation consultant reviewing methodology and cost escalation factors
 - E. Core criteria: Ridership Potential, Socio-Economic Equity, Completing Spine, Connecting Centers
 - F. Summer 2021 – Board to make decisions on moving forward with ST3 projects

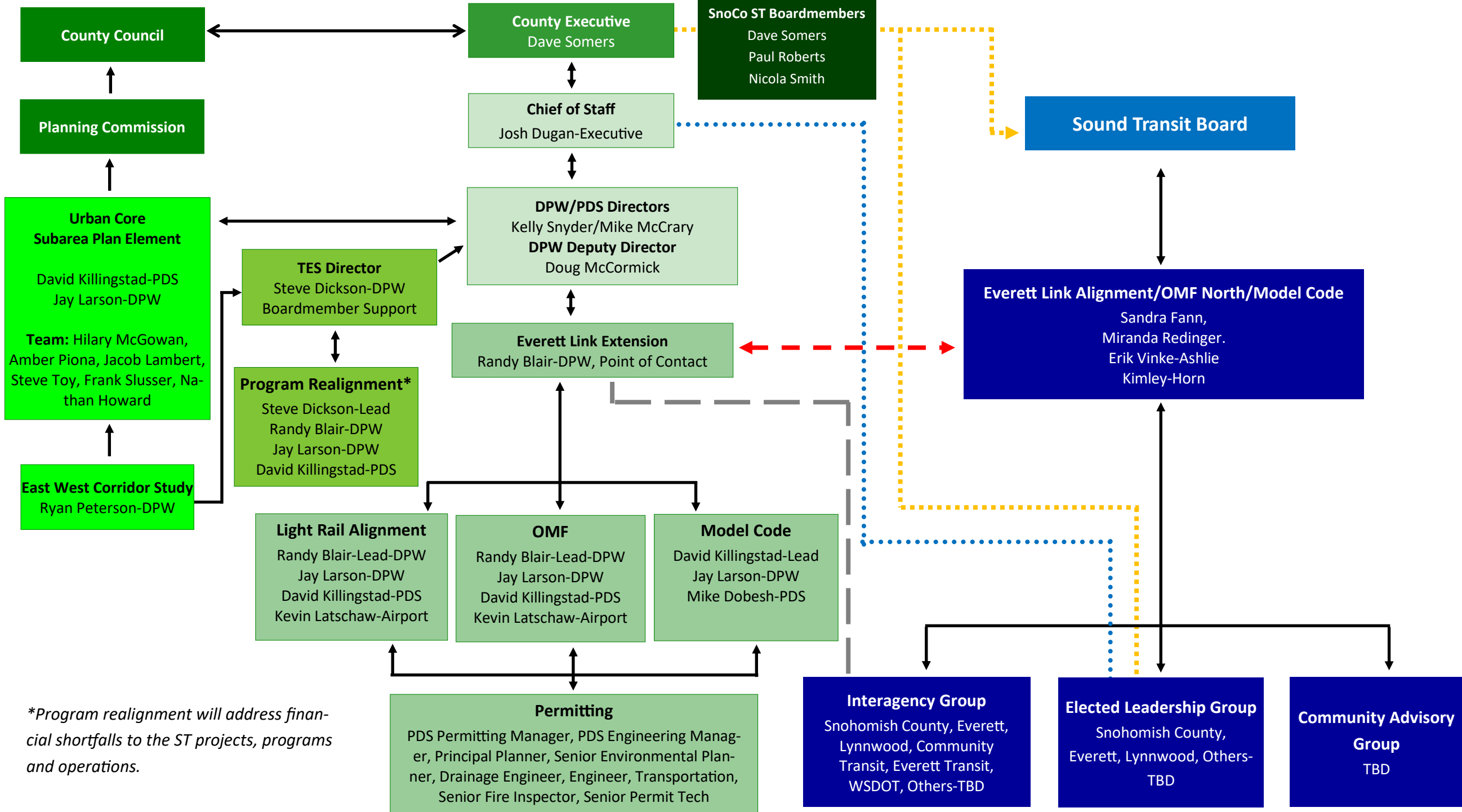
- IV. Past County Council Actions in Support of ST-3 – Steve D.
 - A. Joint Resolution Regarding Coordinated and Expedited Planning, Engineering and Permit Processing for the Extension of Light Rail Transit from Lynnwood To Everett – Resolution 16-010
 - B. Resolution Expressing Support for a Memorandum of Understanding with the Cities of Everett and Lynnwood to Prioritize and Expedite Permits for the Sound Transit 3 Project – Resolution 16-009
 - C. Joint Resolution of the Snohomish County Council and County Executive Expressing Support for Snohomish County Light Rail Station Planning – Resolution 20-004

- V. County Infrastructure Required to Accommodate ST-3 –Jay
 - A. First East/West Corridor Study
 - B. Station Area Planning Study added more detail about transit, bicycle, and pedestrian needs
 - C. Urban Core Subarea Plan will continue this work

- VI. Questions & Answers

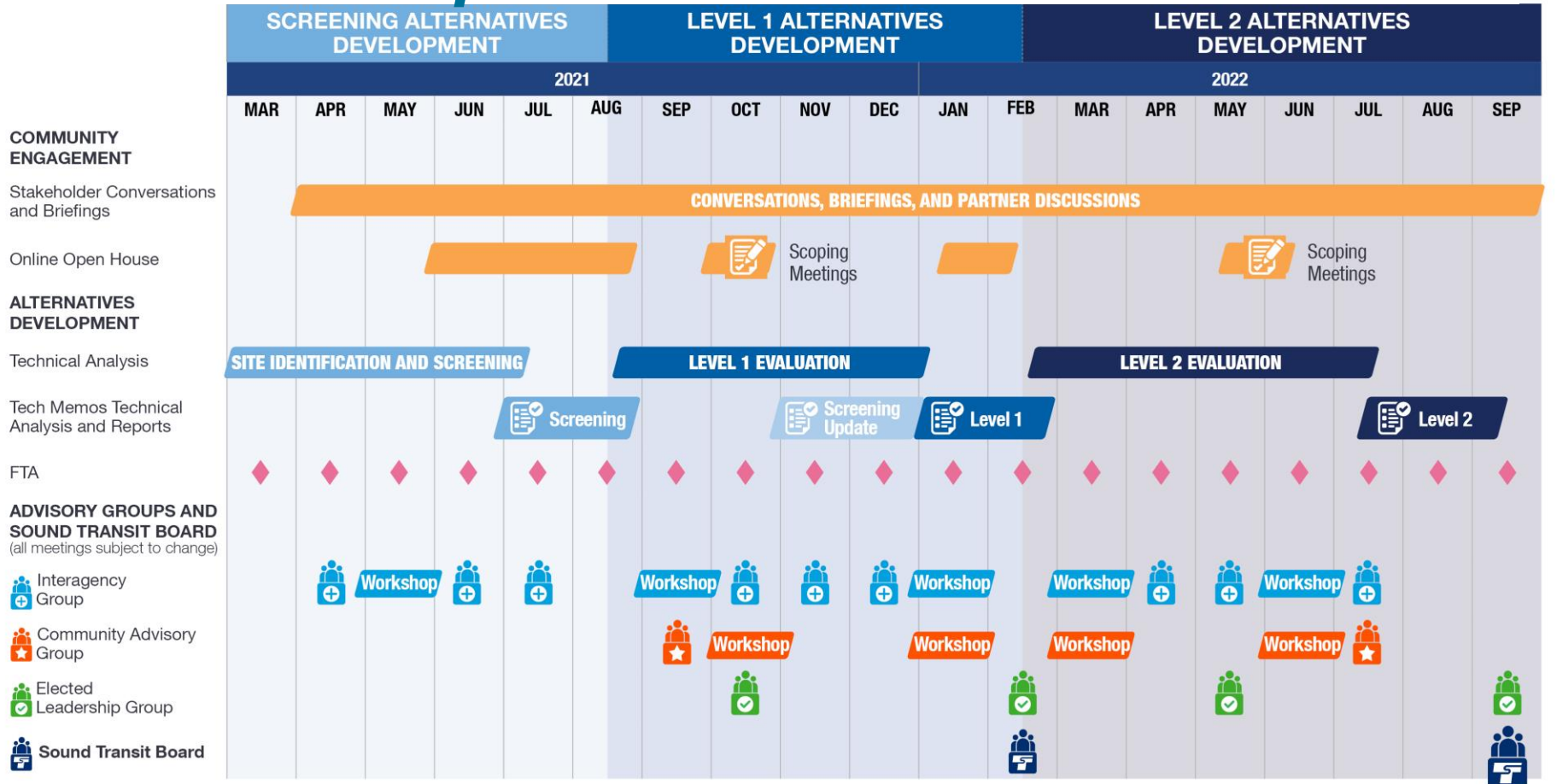
Sound Transit Everett Link and Urban Core Subarea Plan Element: Roles and Responsibilities

May 2021



**Program realignment will address financial shortfalls to the ST projects, programs and operations.*

Phase 1: AD process schedule



Everett Link Extension

Start of service in 2036

- Length: 16.3 miles
- Stations: 6 plus 1 provisional
- Early City/County planning
 - Coordinate public information
 - Inform ST process
- Sound Transit pre-project planning work starting in 2019

Everett Link Extension

- Surface
- Elevated
- Station area
- Provisional station area

Service by 2036

- Light rail
- Station

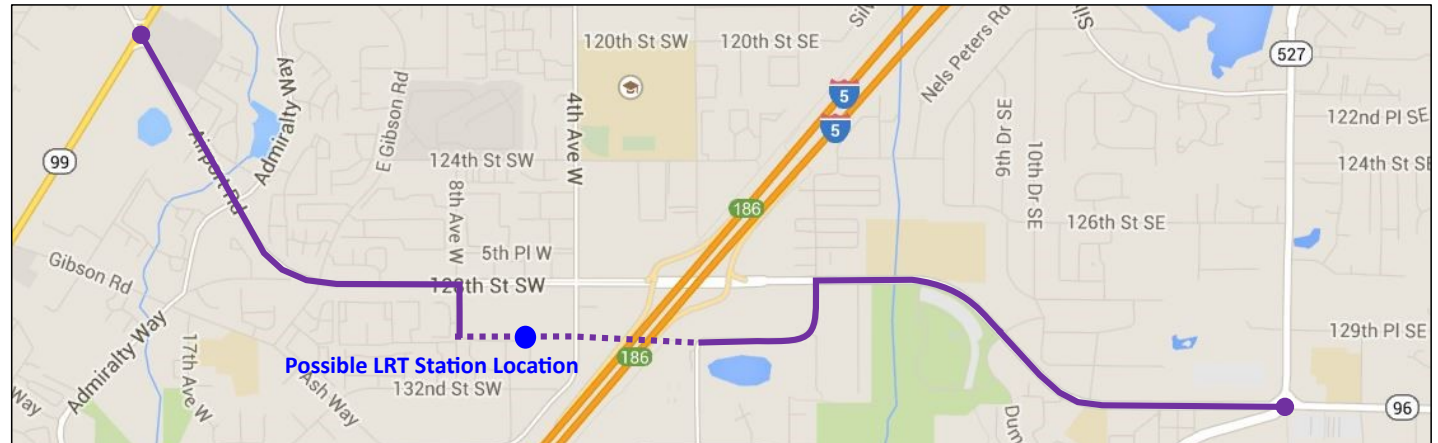


E-W Corridor HCT Access Study

128th /Mariner Station

Existing Roadway

New Roadway



164th/Ash Way Station

Existing Roadway

New Roadway

