

SNOHOMISH COUNTY COUNCIL  
Snohomish County, Washington

MOTION NO. 22-011

MOTION APPROVING THE 2022 COUNTY OFFICE SPACE REPORT

WHEREAS, the County Council approved amendments to Snohomish County Code 4.46 on October 20, 2008, directing the Department of Facilities & Fleet ("Department") to prepare and submit to the County Council a proposed office space plan on or before December 31 of each year for the following fiscal year or biennium; and

WHEREAS, the Department of Facilities & Fleet submitted the 2022 County Office Space Plan Report on December 30, 2021; and

WHEREAS, the County Council discussed and reviewed the 2022 County office Space Plan Report with the Department of Facilities & Fleet including Exhibit A which listed the Department's recommended changes to the 2022 County Office Space Plan including estimated cost, implementation plan/timetable and fund source availability, if any, for each change;

NOW, THEREFORE, the County Council on motion approves the 2022 County Office Space Report as submitted by the Department of Facilities & Fleet, including the authorization of the Department's recommended changes as listed in Exhibit A.

PASSED this 26<sup>th</sup> day of January, 2022

SNOHOMISH COUNTY COUNCIL  
Snohomish County, Washington

  
\_\_\_\_\_  
Council Chair

ATTEST:

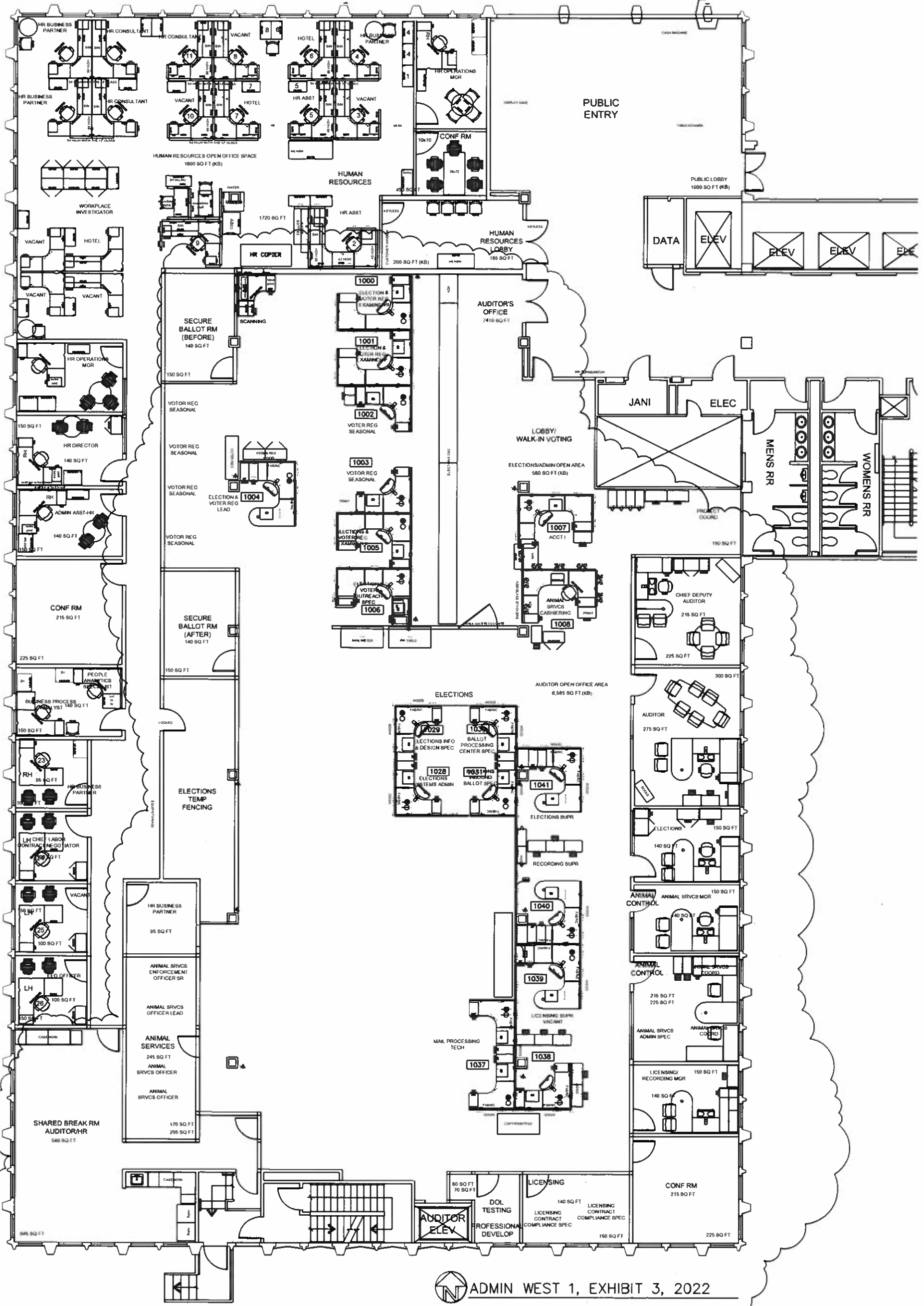
  
\_\_\_\_\_  
Asst. Clerk of the Council

Item:	Requesting Department:	Description of Recommended Changes (see attachments for additional details):	Location:	Implementation Plan/ Timetable	Rough Order of Magnitude Estimate:	GENERAL FUND	NON GENERAL FUND	FUND	TYPE
1	Airport	Remodel Air National Guard building to centralize maintenance operations inc staff, shop, warehouse & garage spaces contingent on Owner & Council approval to acquire property.	Paine Field	Jan 2022 - Dec 2022	\$800,000		\$800,000	410	AIRPORT ENTERPRISE FUND
2	Airport	Remodel recently purchased Bomarc building to centralize administrative services & operations.	Paine Field	Jan 2022 - Dec 2022	4 mil		4 mil	410	AIRPORT ENTERPRISE FUND
3	Auditor's Office	Move/add/change work to support Election improvements.	Onsite and/or offsite facilities	Jan 2022 - Dec 2022	\$500,000		\$500,000	311	FACILITIES CIP FUND
4	Clerk's Office	Move/add/change work to accommodate ARPA new hires inc workspace & technology improvements to address L&J covid backlog.	DJJC (1S)	Jan 2022 - Jul 2022	\$250,000		\$250,000	311	FACILITIES CIP FUND
5	DCNR	Move/add/change work to accommodate SWM new hires.	Admin West (3W)	Jan 2022 - Mar 2022	\$5,000 - \$10,000		\$5,000 - \$10,000	415	SWM ENTERPRISE FUND
6	DCNR	Move/add/change work to accommodate displaced McCollum Park staff inc WSU, Master Gardener & Cooperative Extension partnerships.	Willis Tucker & Fairgrounds	Jan 2022 - Jun 2022	\$5,000 - \$25,000	\$5,000 - \$25,000		002	GENERAL FUND
7	DCNR	Continue planning & construction services for the new Food & Farming Center.	McCollum Park	Jan 2022 - Dec 2022	3 mil		3 mil	309	DCNR CIP FUND
8	District Court	Move/add/change work to address support staff working conditions at the outlying courts inc security, safety, ergonomic, paperless & comfort improvements.	Cascade District Court Evergreen District Court South District Court	Jan 2022 - Dec 2022	1 mil		1 mil	311	FACILITIES CIP FUND
9	Human Services	Move/add/change work to accommodate CASA program new hires.	DJJC (2S)	Jan 2022 - Dec 2022	\$15,000 - \$25,000	\$15,000 - \$25,000		002	GENERAL FUND
10	Human Services	Move/add/change work to support administrative & contract staff efficiencies.	Admin East (4E)	Jan 2022 - Dec 2022	\$10,000 - \$20,000		\$10,000 - \$20,000	124	HS GRANT FUNDS
11	Human Services	As-needed move/add/change work to support HS program & staffing changes inc employment, education, housing, treatment, home care, disability, energy, veteran, crisis, etc. services.	Admin Blgs (LL, 4E, 4W) Carnegie & DJJC	Jan 2022 - Dec 2022	\$5,000 - \$50,000		\$5,000 - \$50,000	124	HS GRANT FUNDS
12	Information Technology	Research solutions to reduce high noise levels & distraction in help desk office suite inc fewer, larger, shared workstations with a hybrid workforce; or space swap with another IT group.	Admin West basement	Jan 2022 - Apr 2022	\$5,000 - \$15,000		\$5,000 - \$15,000	505	DIS FUND
13	Prosecuting Attorney's Office	Move/add/change work to accommodate ARPA project positions to address L&J covid backlog.	Mission (M1)	Jan 2022 - Mar 2022	\$25,000		\$25,000	130	ARPA GRANT FUNDS

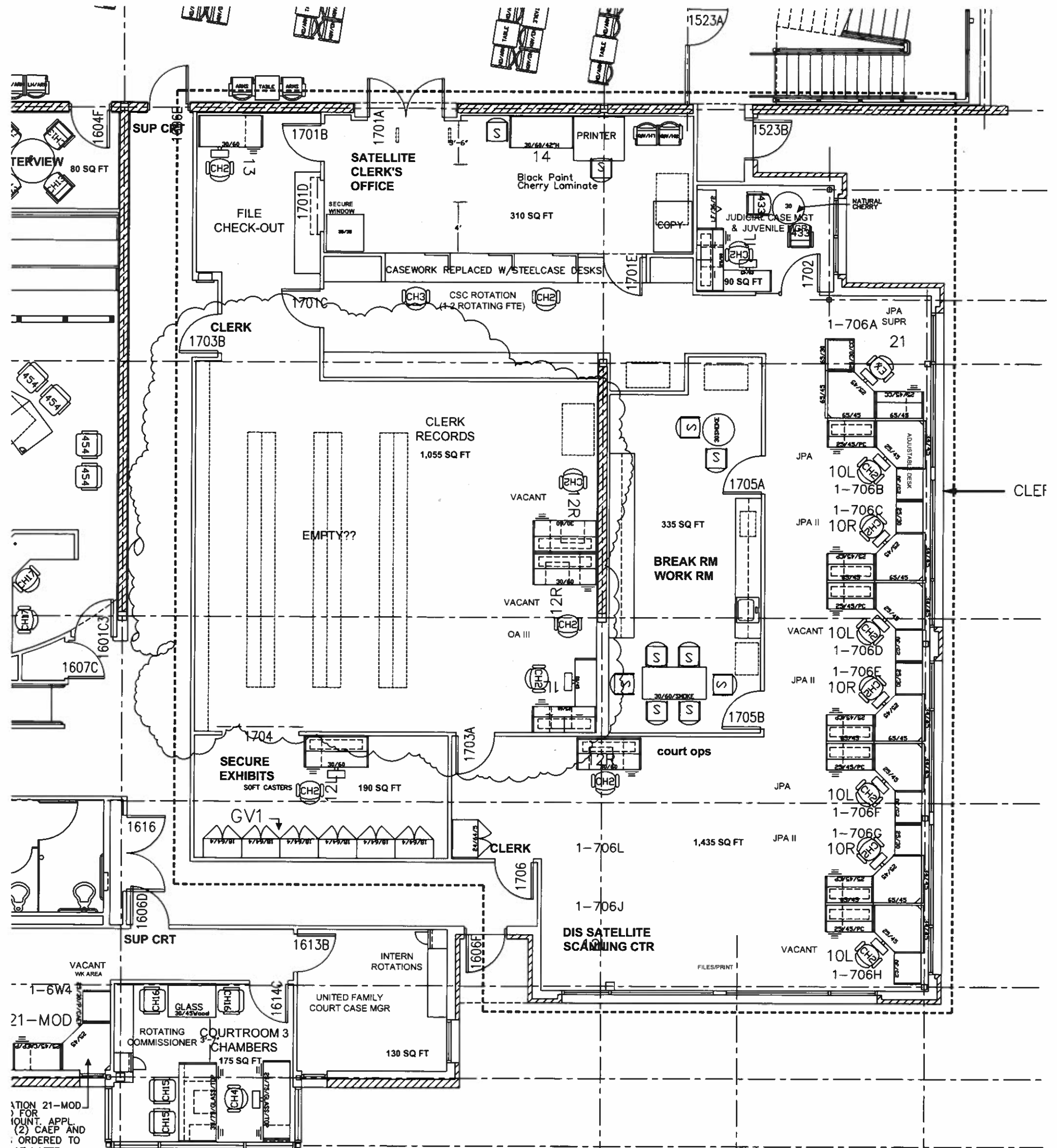
Item:	Requesting Department:	Description of Recommended Changes (see attachments for additional details):	Location:	Implementation Plan/ Timetable	Rough Order of Magnitude Estimate:	GENERAL FUND	NON GENERAL FUND	FUND	TYPE
14	Public Works	Move/add/change work to address office & workspace conditions inc ergonomic, collaboration, hybrid workforce, digital & efficiency improvements.	Admin West (5W)	Jan 2022 - Dec 2022	1 mil		1 mil	102	PW ROAD FUND
15	Public Works	Continue project design work to construct an Operations Center (similar to Cathcart) to replace out-dated buildings & ancillary services on existing site.	Arlington Road Maintenance & Fleet Shops	Jan 2022 - Dec 2022	\$850,000		\$850,000	188	PW ROAD FUND ER&R FUNDS
16	Sheriff's Office	Re-start project design work regarding replacement location for Sheriff's Office South Precinct inc potential new build & remodel.	Cathcart & Paine Field	Jan 2022 - Dec 2022	1 mil		1 mil	311	FACILITIES CIP FUND
17	Superior Court	Convert shell spaces to add-on trial courtroom w/jury room and judicial chambers to accommodate new judge & associated staff to address covid court congestion.	Courthouse (CH3)	Jan 2022 - Dec 2022	1 mil		1 mil	311	FACILITIES CIP FUND
18	Facilities	Continued move/add/change work to support covid concerns, hybrid workforce, space density, L&J backlog, customer service operations, security improvements, digital expansion, ergonomics, flexibility, etc.	County Workspaces	Jan 2022 - Dec 2022	undetermined		undetermined		EACH USER GROUP RESPONSIBLE FOR COSTS; OR GRANT FUNDS IF AVAILABLE
			<b>GRAND TOTALS:</b>						
						<b>\$13,470,000 - \$13,570,000</b>	<b>\$13,450,000 - \$13,520,000</b>		
						<b>(General Fund)</b>	<b>(Non-General Fund)</b>		

100'-0"  
 30'-0"    40'-0"    30'-0"

55  
 50  
 46  
 42  
 38  
 34  
 30  
 26  
 21

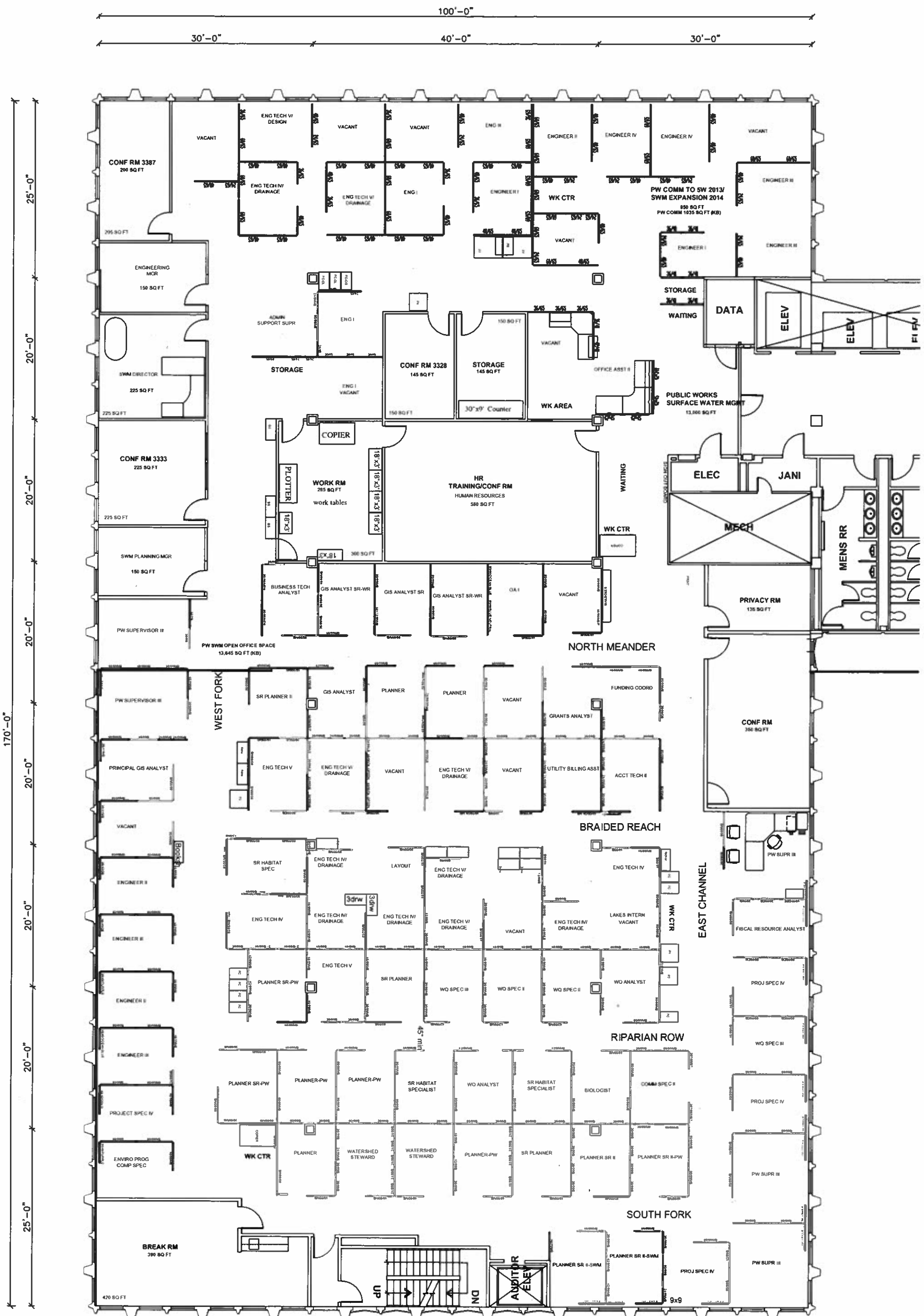


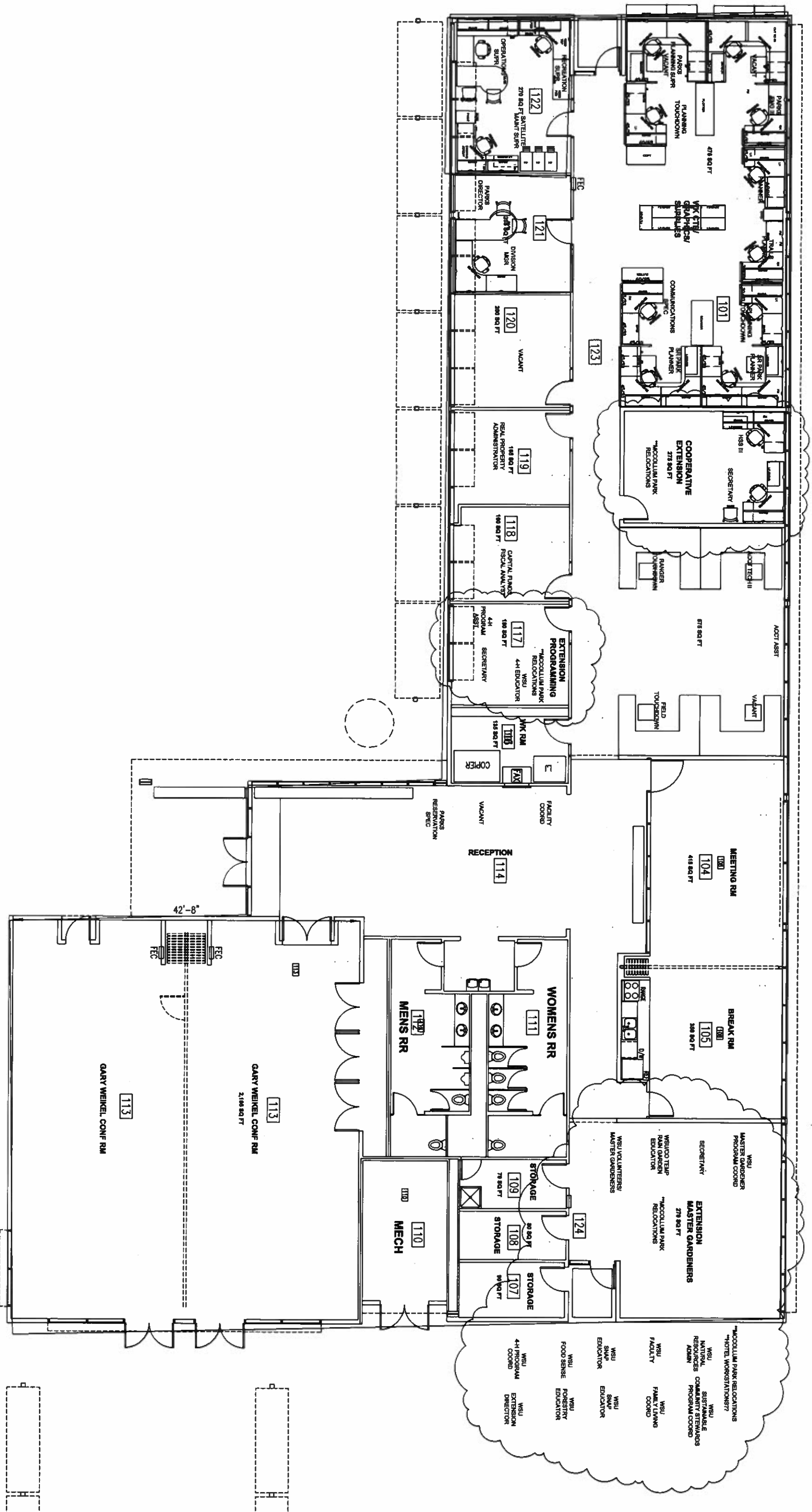
ADMIN WEST 1, EXHIBIT 3, 2022



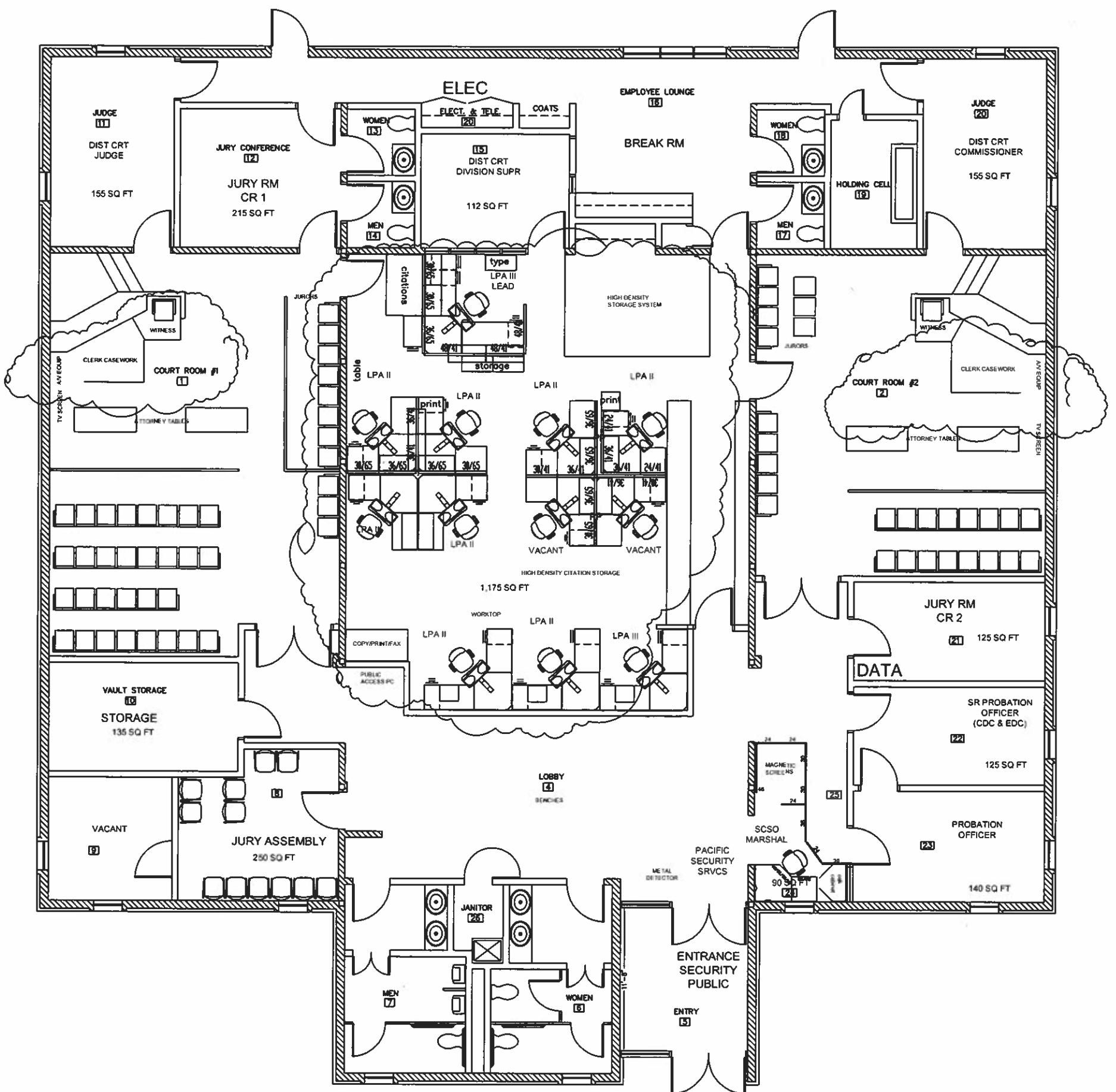
DJJC 2S, EXHIBIT 4, 2022

ATION 21-MOD  
FOR  
OUNT. APPL  
(2) CAEP AND  
ORDERED TO  
AT LATER  
FREESTANDING  
IRON NEEDED FOR CORNER)



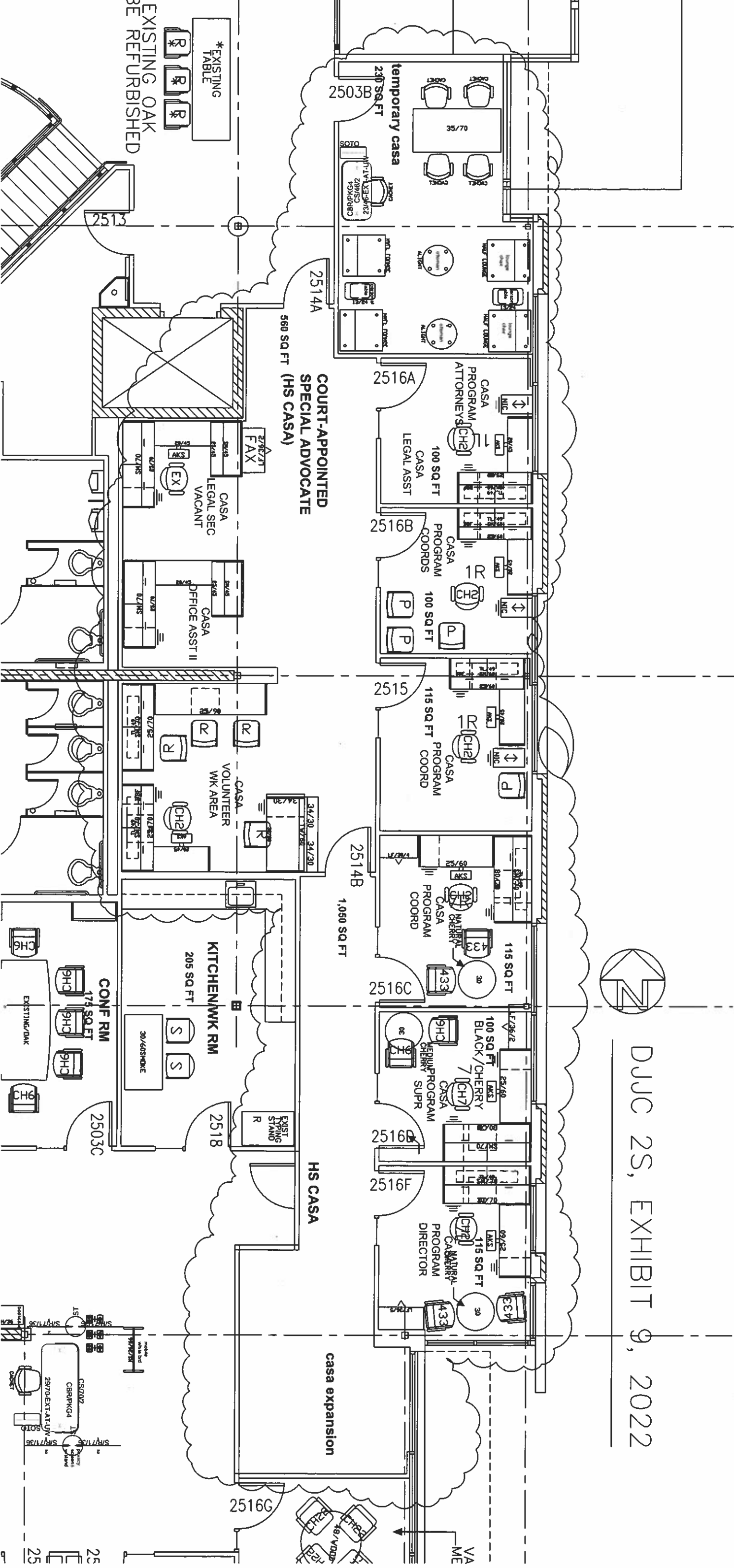


WILLIS TUCKER, EXHIBIT 6, 2022




**CASCADE COURT, EXHIBIT 8, 2022**  
 3/16"=1'-0"





DJJC 2S, EXHIBIT 9, 2022

EXISTING OAK  
BE REFURBISHED

**COURT-APPOINTED  
SPECIAL ADVOCATE  
(HS CASA)**

temporary casa  
230 SQ FT

2516A  
CASA PROGRAM  
ATTORNEY (CH2)  
LEGAL ASST  
100 SQ FT

2516B  
CASA PROGRAM  
COORDS  
100 SQ FT

2515  
CASA PROGRAM  
COORD  
115 SQ FT

2514B  
1,050 SQ FT

2516C  
115 SQ FT  
CASA NATURAL  
CHERRY PROGRAM  
COORD

2516D  
115 SQ FT  
CASA NATURAL  
CHERRY PROGRAM  
DIRECTOR

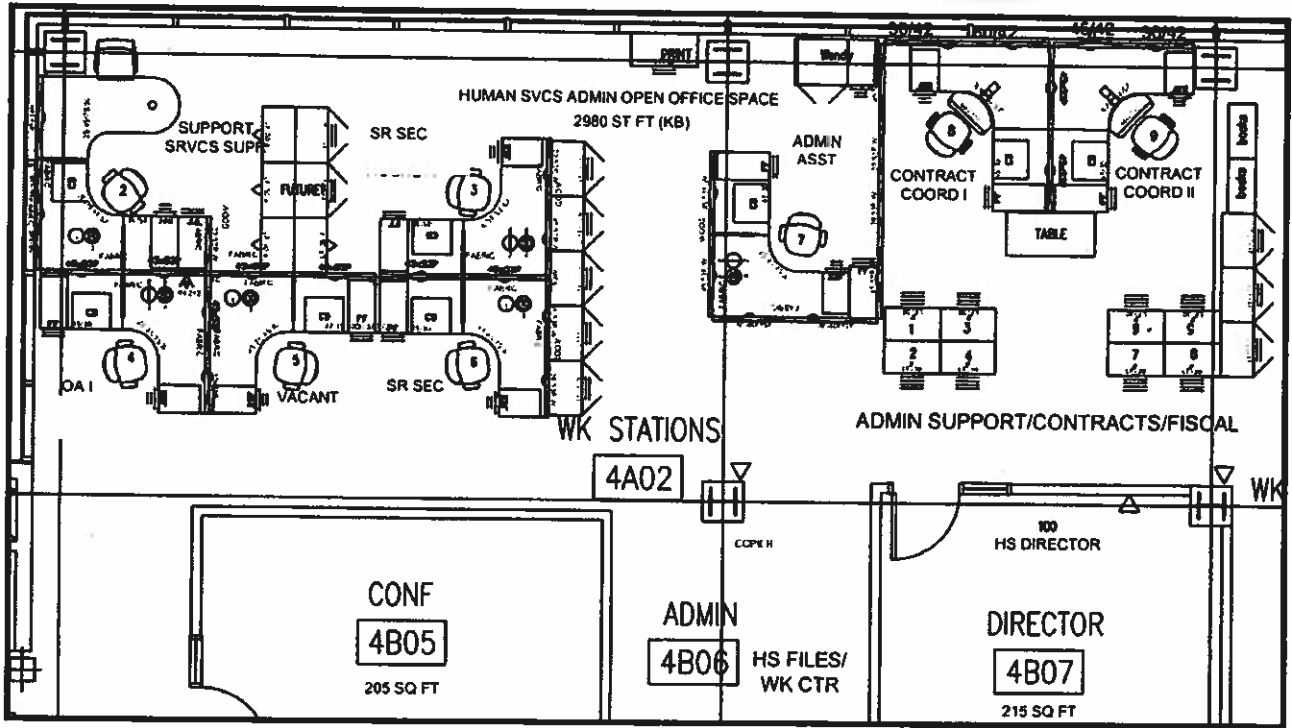
2516F  
115 SQ FT  
CASA NATURAL  
CHERRY PROGRAM  
DIRECTOR

KITCHENWK RM  
205 SQ FT

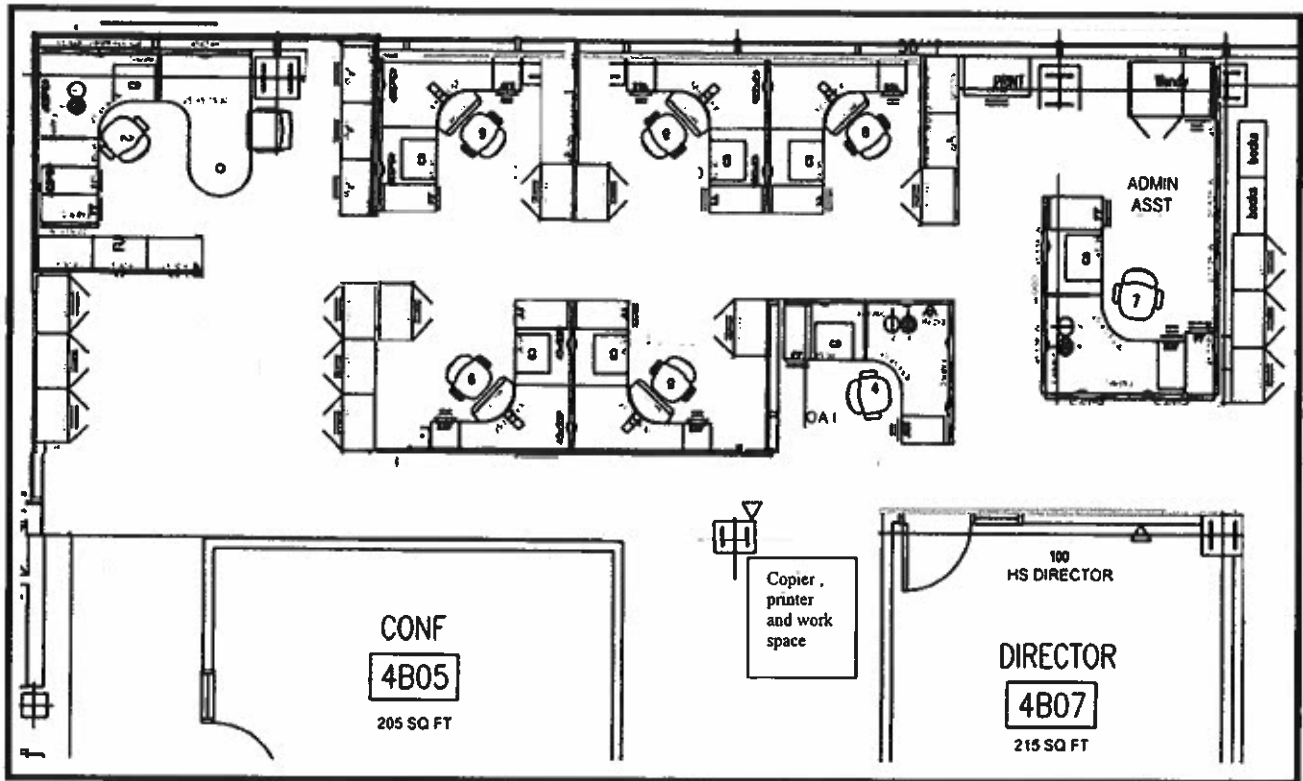
CONF RM  
175 SQ FT

2516G  
181 V/DGP

**CURRENT** ADMIN EAST 4, EXHIBIT 10, 2022

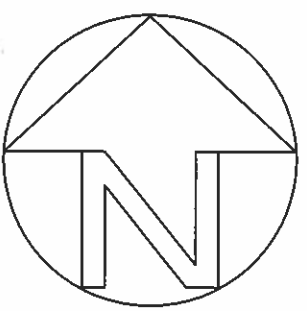
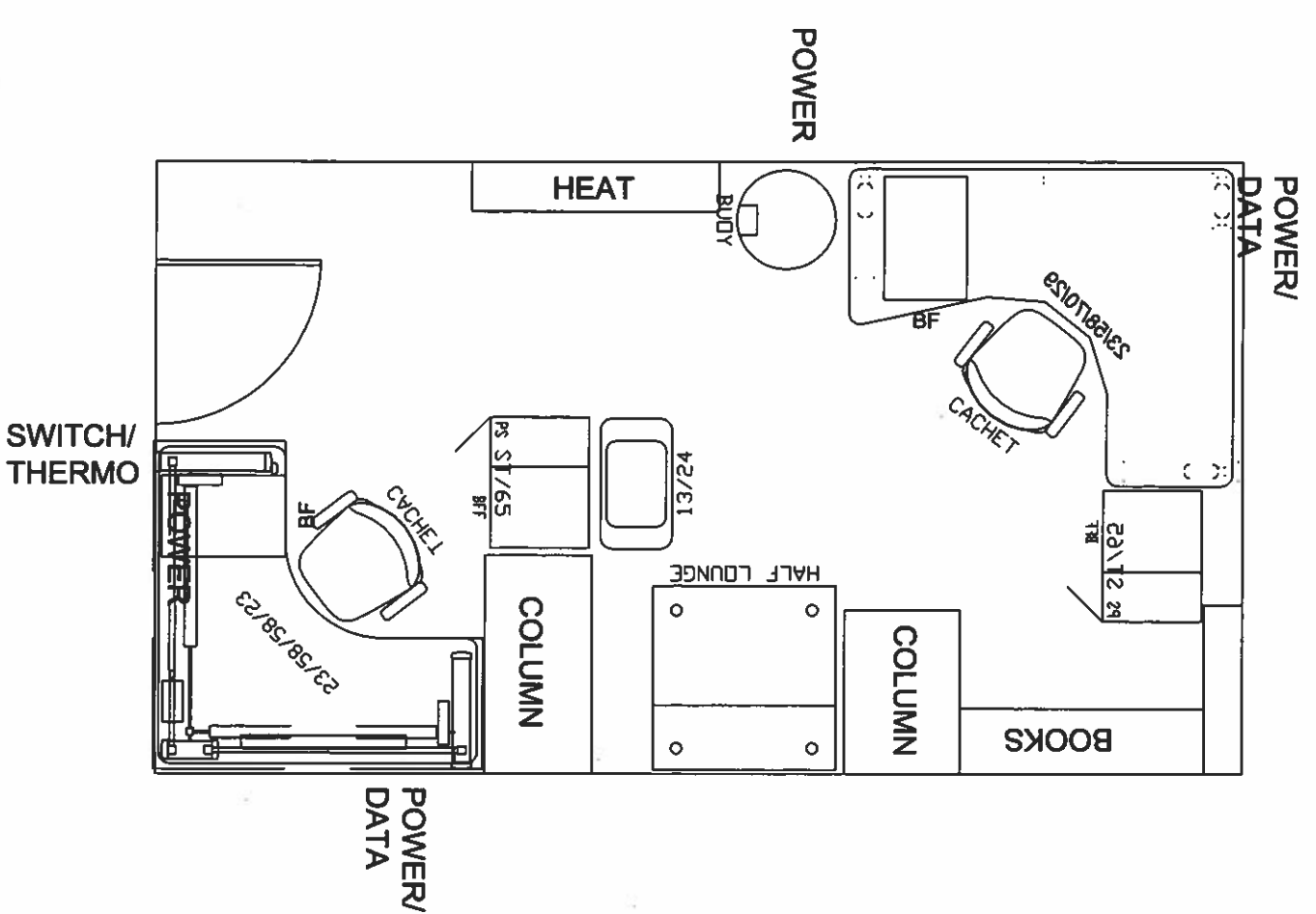
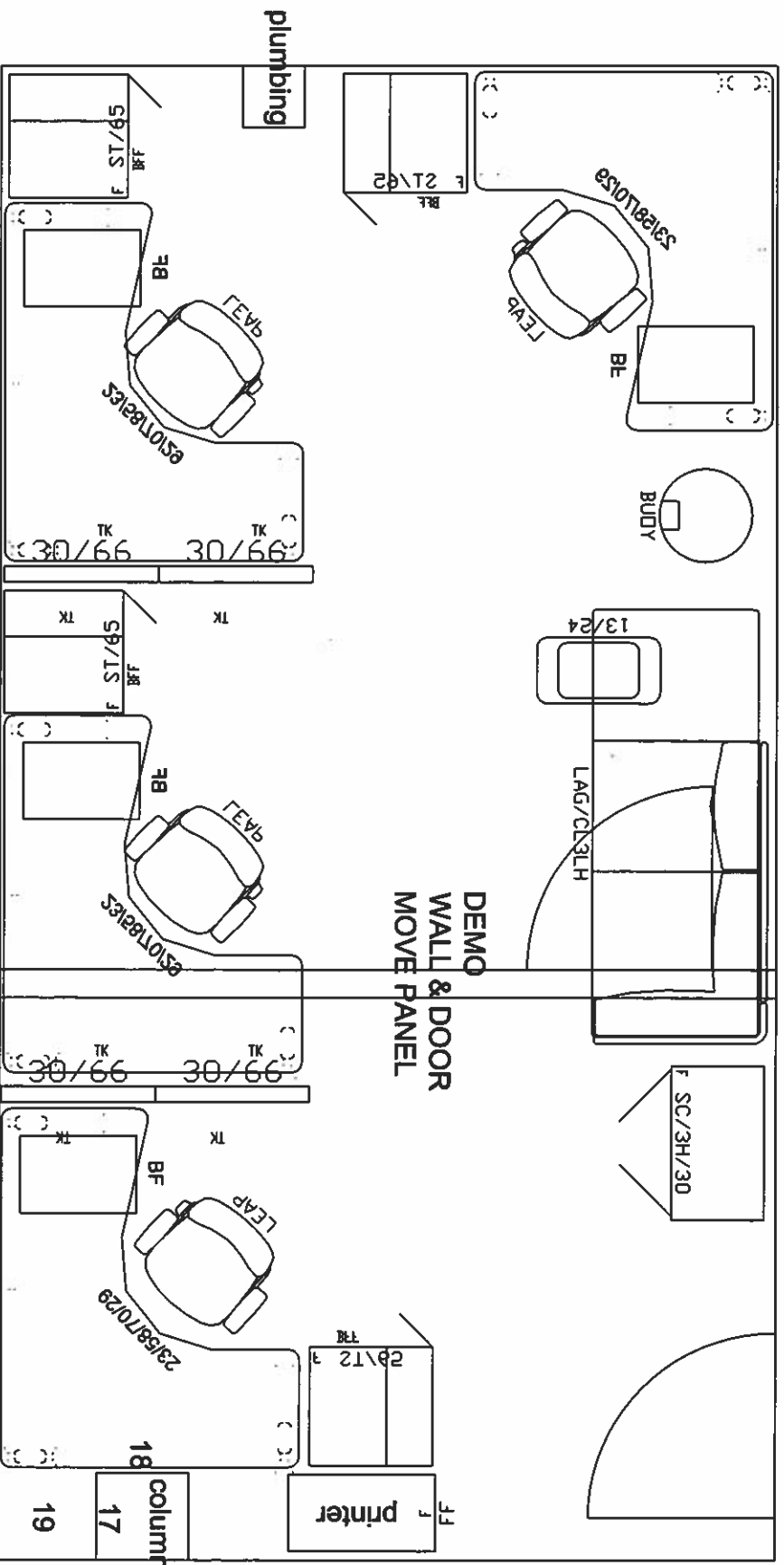


**PROPOSED**

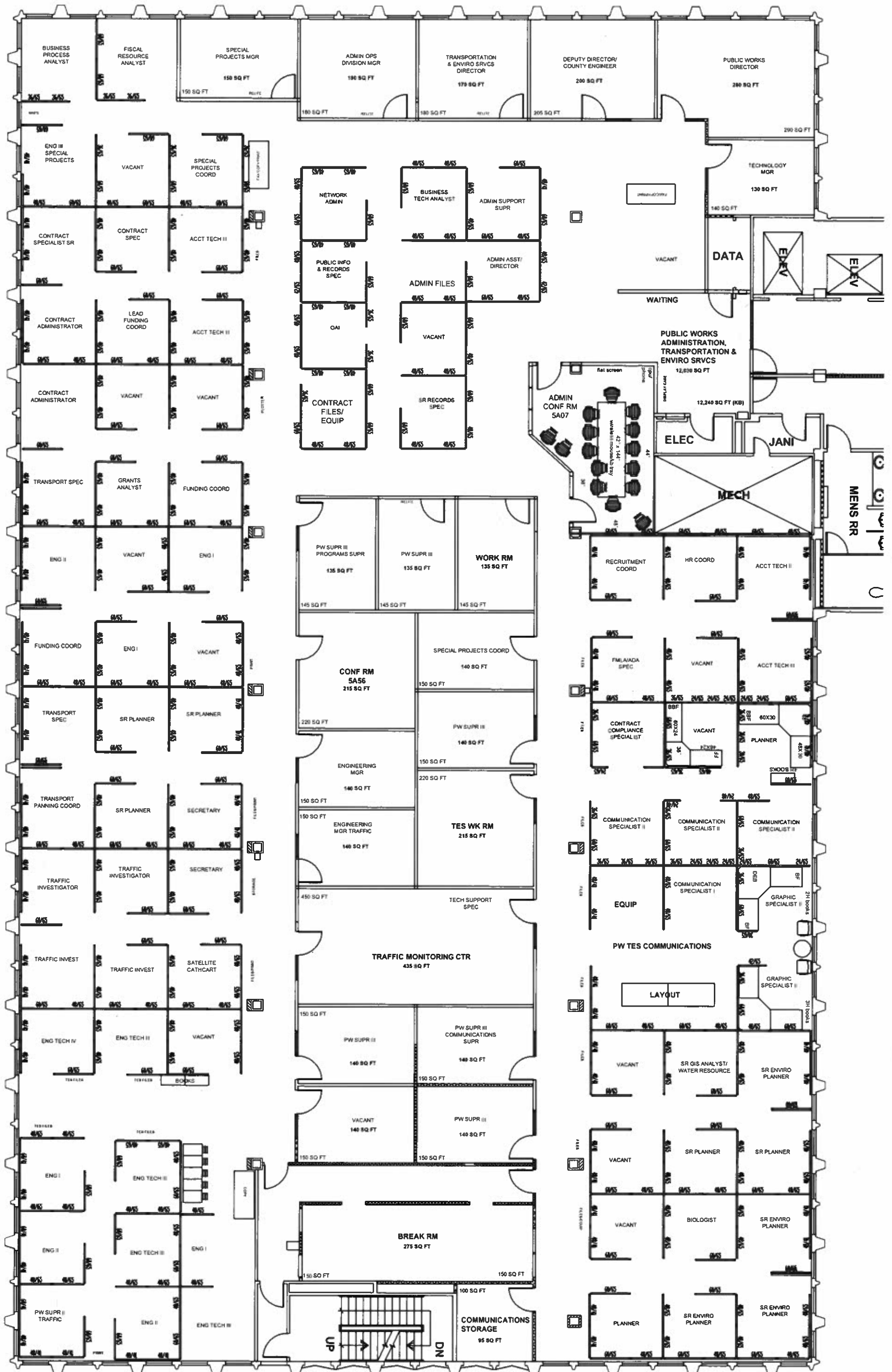




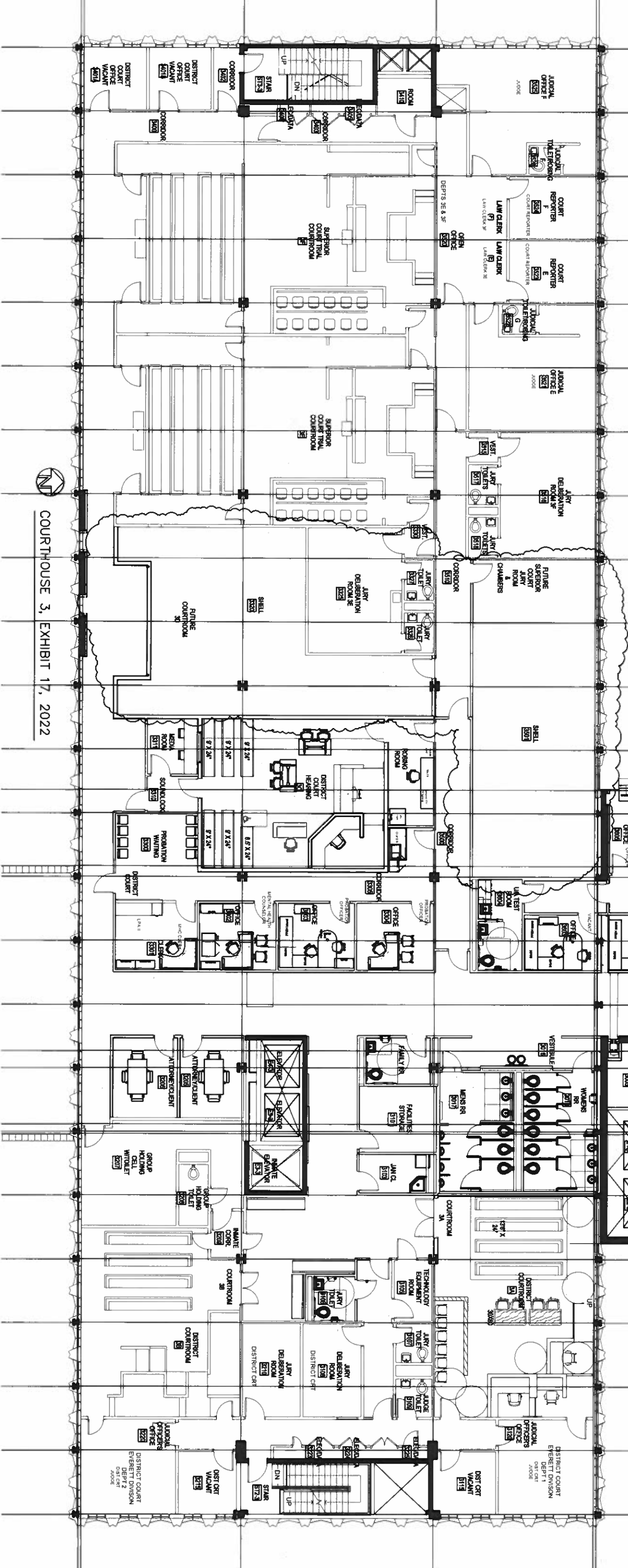
 ADMIN WEST BASEMENT, EXHIBIT 12, 2022



MISSION 1, EXHIBIT 13, 2022



1  
2  
3  
4  
5  
6  
7  
8  
9  
10  
11  
12  
13  
14  
15  
16  
17  
20  
21  
22  
23  
24



COURTHOUSE 3, EXHIBIT 17, 2022

