



Snohomish County
Districting Committee

January 6, 2022

To: Stephanie Wright, Chair
Snohomish County Council

From: Kurt Hilt, Chair
Snohomish County Districting Committee

Re: **Approved Districting Plan for Council Boundaries**

The Snohomish County Districting Committee is pleased to forward to the Snohomish County Council the Committee's approve plan for new county council boundary. This plan is the culmination of 10 months of work by committee members, our districting master team and support staff.

Background

Every ten years following the completion of the United States Census, state law requires jurisdictions with a governing body comprised of internal director, council or commissioner districts to redraw boundaries to equalize population among the districts. To meet this requirement, the Snohomish County Charter provides for the appointment of a five-member Districting Committee that includes representatives of each major political party. The Districting Committee supervises the preparation of a districting plan by a Districting Master that satisfies the requirements of federal, state and local law. Upon adoption, the plan is filed with the Snohomish County Council.

Revised Code of Washington 29A.76.010 and Snohomish County Charter 4.50, et seq. are the primary sources governing the process and requirements of the districting plan.

Districting Committee Members

The Districting Committee, by County Charter, is to consist of two members representing each of the two major political parties, who shall then choose a fifth member. In November 2020, the central committees of the Snohomish County Democratic Party and the Snohomish County Republican Party each provided a list of nominees to the Snohomish County Council. Following an interview process, the Snohomish County Council appointed the following members to the committee:

Representing the Democratic Party:

Hillary Morales
Bill Phillips

Representing the Republican Party:

Jim Langston
Sid Roberts



Snohomish County

Districting Committee

Following a Districting Committee nomination and interview process, the four party-nominated members selected a fifth member to serve as chair:

Kurt Hilt

Districting Master

The Districting Committee, in coordination with the Snohomish County Auditor's Office and the Snohomish Purchasing Division, solicited responses for individuals qualified by education, training and experience to draw a districting plan through a modified Request For Proposals (RFP) process. Responses to the RFP were evaluated by the Districting Committee and interviews were conducted. The Districting Committee selected Charla Skaggs of FLO Analytics, Inc of Seattle, WA to serve as Districting Master. The contract for Districting Master Services was forwarded and approved by the Snohomish County Council on June 7, 2021.

Criteria Used for Redistricting

State law (RCW 29A.70.010 (4)) requires that internal director, council and commissioner district lines be drawn to be:

- As nearly equal in population as possible;
- As compact as possible;
- Geographically contiguous;
- Not favoring or disfavoring based on population data any racial group or political party;
- To the extent feasible, coincident with existing recognizes natural boundaries; and
- To the extent possible, preserving existing communities of related and mutual interest.

Committee Meetings

The Committee held 23 meetings that were open to the public. During these meetings committee members discussed priorities, considered public comments, and shared potential boundary changes. At the end of October 2021, the Committee asked the Districting Master to prepare a final draft plan that minimized changes to current council boundaries.

Public Hearing

Public input was sought throughout the redistricting processes with five opportunities for public comment at committee meetings as well as solicitation for written feedback. Many members of the community provided input on preliminary map ideas. After submission of an official draft plan on November 1, a public hearing was noticed and held on November 10, 2021 at 6pm in the Jackson Board Room of the Robert J. Drewel Building to solicit final comment.

Approval of the Districting Plan

The Districting Committee held a final meeting on November 17, 2021 and unanimously approved the attached plan.



Snohomish County
Districting Committee

If you have any questions on the plan or the committee proceedings, please feel free to contact me or County Auditor Garth Fell who supported the Districting Committee through this process.

Enclosures (1)



MEMORANDUM

To: Garth Fell Date: November 1, 2021
From: Charla Skaggs Project No.: F1202.06.01
RE: Districting Plan to Districting Committee

FLO Analytics (FLO) is pleased to provide the districting plan for consideration by the Snohomish County Districting Committee (Committee). The map complies with all relevant statutes and guidance pertaining to voter redistricting in Washington State.

RCW 29A.76.010—Counties, municipal corporations, and special purpose districts.

- (a) Each internal director, council, or commissioner district shall be as nearly equal in population as possible to each and every other such district comprising the municipal corporation, county, or special purpose district.
- (b) Each district shall be as compact as possible.
- (c) Each district shall consist of geographically contiguous area.
- (d) Population data may not be used for purposes of favoring or disfavoring any racial group or political party.
- (e) To the extent feasible and if not inconsistent with the basic enabling legislation for the municipal corporation, county, or district, the district boundaries shall coincide with existing recognized natural boundaries and shall, to the extent possible, preserve existing communities of related and mutual interest.

DISTRICT BOUNDARY CHANGES:

To meet the statutes and guidance pertaining to voter redistricting in Washington State cited above and incorporate public input received both via email to Snohomish County and during public comment at Committee meetings, the following boundary changes, shown on the attached map, were made:

- **District 2:** Part of District 2 now extends into District 4. This new portion of District 2 extends southwest from the west side of Silver Lake along I-5 to 164th Street SW. It proceeds east to 3rd Avenue then north along the west boundary of Mill Creek.
- **District 4:** A small portion of District 4 has now been moved to District 3 and is bounded by Damson Road, S. Danvers Road, and 203 Place SW.

The attached map reflects the following statistics:

Ideal Population	165,591
Overall Range	1.5%

Please note that while an overall range of under 10% is acceptable, a value below 5% is ideal. The configuration of the districts in the scenario results in an overall range of 1.5%.

District	Total Population	Over/Under Ideal	Deviation from Ideal
1	164,448	-1,143	-0.7%
2	166,840	1,249	0.8%
3	165,102	-489	-0.3%
4	166,906	1,315	0.8%
5	164,661	-930	-0.6%

District	Non-Hispanic or Latino						Hispanic or Latino
	White	Black or African American	American Indian or Alaska Native	Asian	Native Hawaiian or Other Pacific Islander	Two or More	
1	74.4%	1.5%	1.3%	4.3%	0.5%	0.5%	7.0%
2	58.1%	4.6%	2.1%	11.6%	1.0%	0.5%	6.9%
3	55.8%	6.5%	0.5%	16.5%	0.7%	0.6%	6.6%
4	56.6%	2.9%	0.4%	23.2%	0.4%	0.6%	7.0%
5	74.4%	1.7%	0.6%	5.1%	0.3%	0.6%	7.0%

District	Polsby-Popper	Schwartzberg	Reock	Convex Hull	Length-Width
1	0.41	1.56	0.32	0.93	0.35
2	0.31	1.81	0.41	0.74	0.63
3	0.47	1.47	0.38	0.81	0.78
4	0.32	1.77	0.35	0.73	0.72
5	0.27	1.91	0.29	0.78	0.34

Polsby-Popper, Reock, Convex Hull, and Length-Width scores fall within the range of 0–1, with 1 being the most compact. In comparison, a Schwartzberg score of 1 is the most compact and higher scores are increasingly less compact.

Upon further direction from the Committee, FLO will make additional changes, if necessary, in advance of the planned November 10, 2021, public hearing.

METHODS

Data Sources:

Relevant data for the analysis were obtained from the U.S. Census Bureau and Snohomish County. The following is a list of data sources used to inform the demographic assessment:

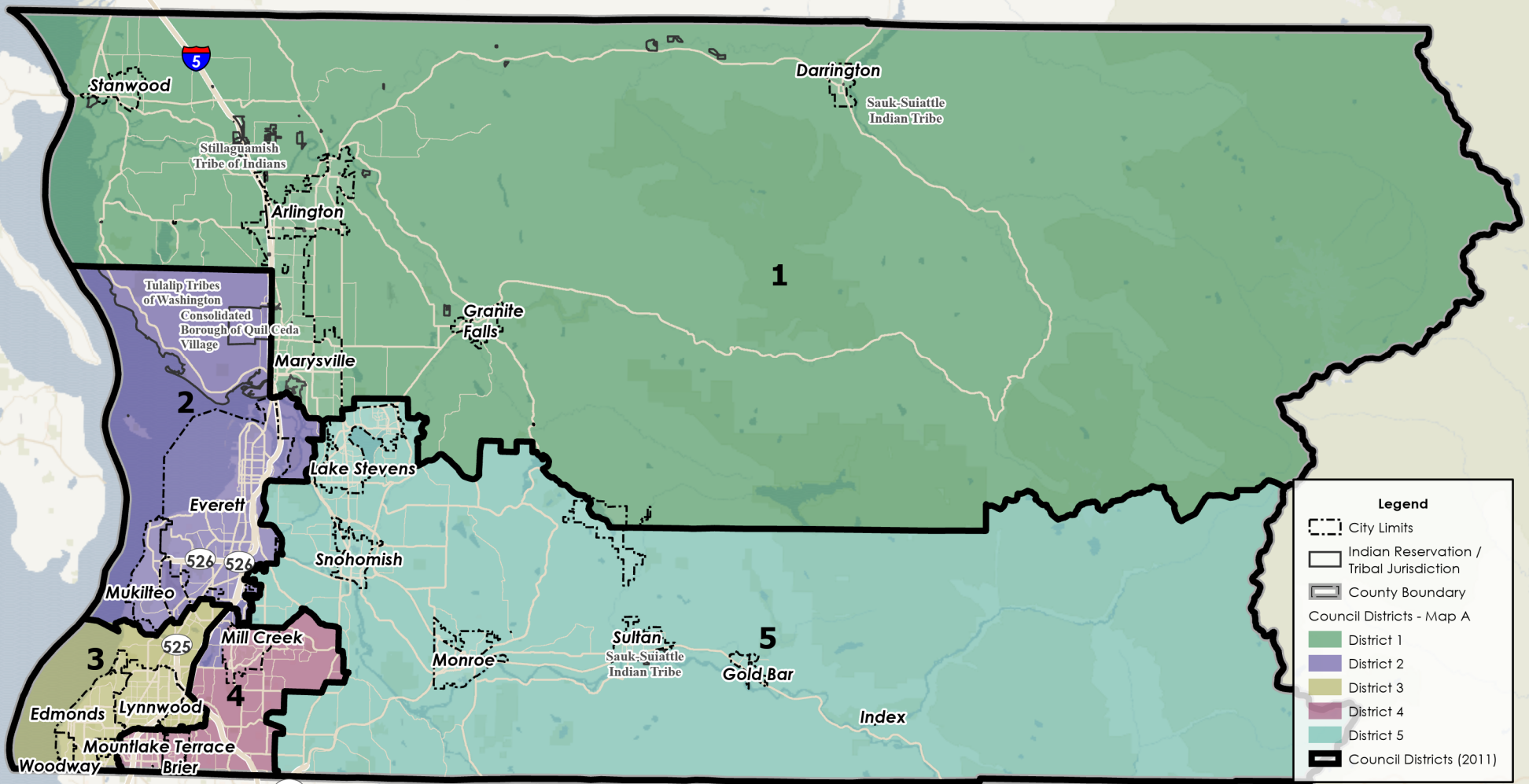
- U.S. Census Bureau
 - 2010 decennial census total population enumerations
 - 2010 census geographies (e.g., block boundaries, county boundaries)
 - 2020 decennial census total population enumerations
 - 2020 census geographies
 - 2015-2019 ACS five-year CVAP by race and ethnicity estimates
- Snohomish County
 - County Council Districts (2011)
 - Address locations

2010 and 2020 Census Total Population Enumerations:

The existing council district boundaries were obtained from Snohomish County's GIS Data Downloads file transfer protocol site. The 2010 and 2020 census blocks were geospatially assigned to their respective council districts, and the 2010 and 2020 decennial census total population enumerations per census block were then summed to determine the population for each district in 2010 and 2020.

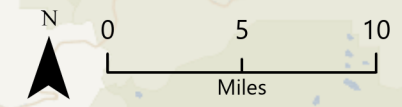
SNOHOMISH COUNTY COUNCIL DISTRICTS

MAP A - OVERVIEW



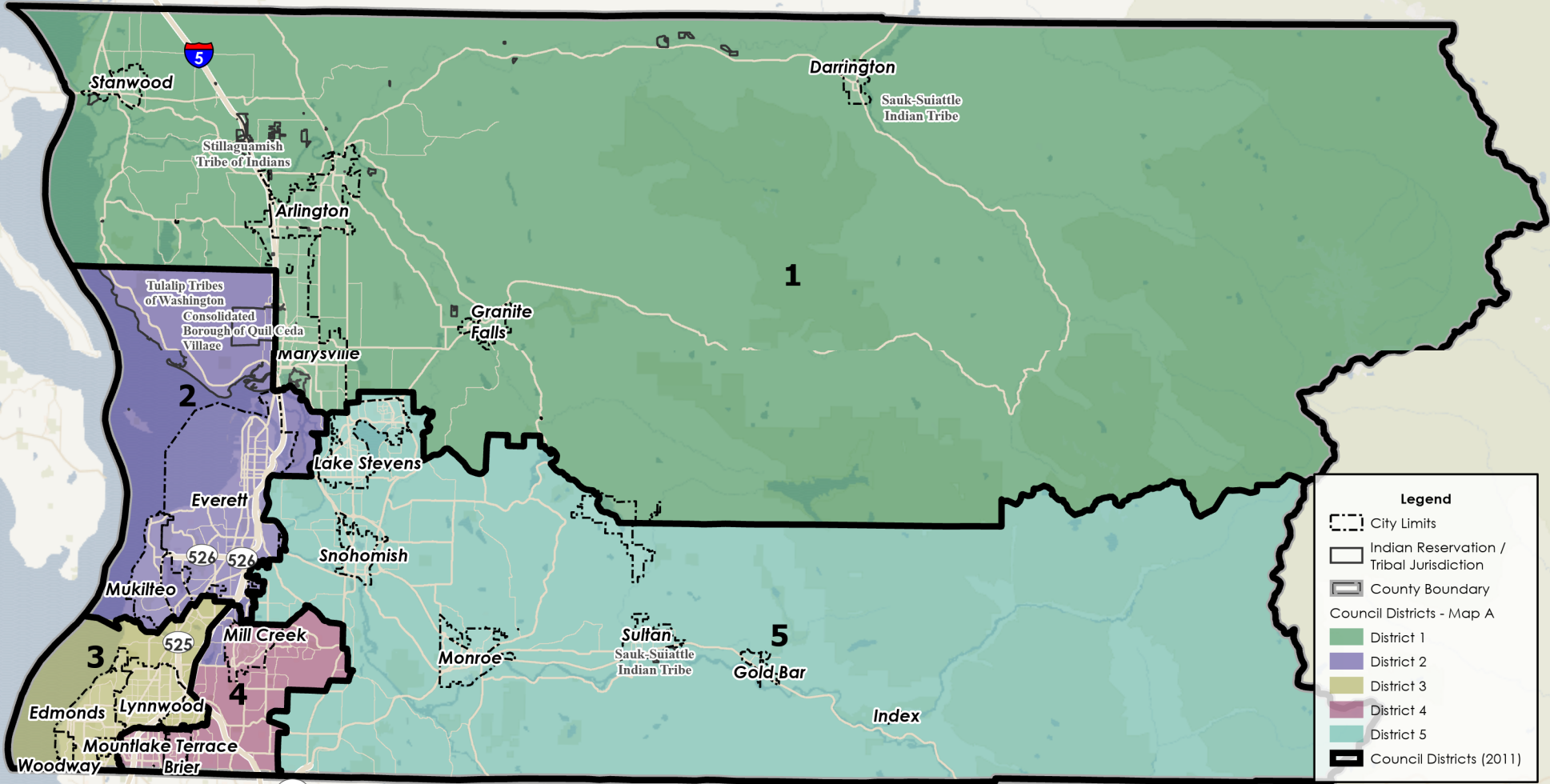
Legend

- City Limits
- Indian Reservation / Tribal Jurisdiction
- County Boundary
- Council Districts - Map A**
- District 1
- District 2
- District 3
- District 4
- District 5
- Council Districts (2011)



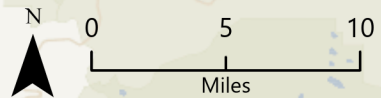
SNOHOMISH COUNTY COUNCIL DISTRICTS

MAP A - DISTRICT 1



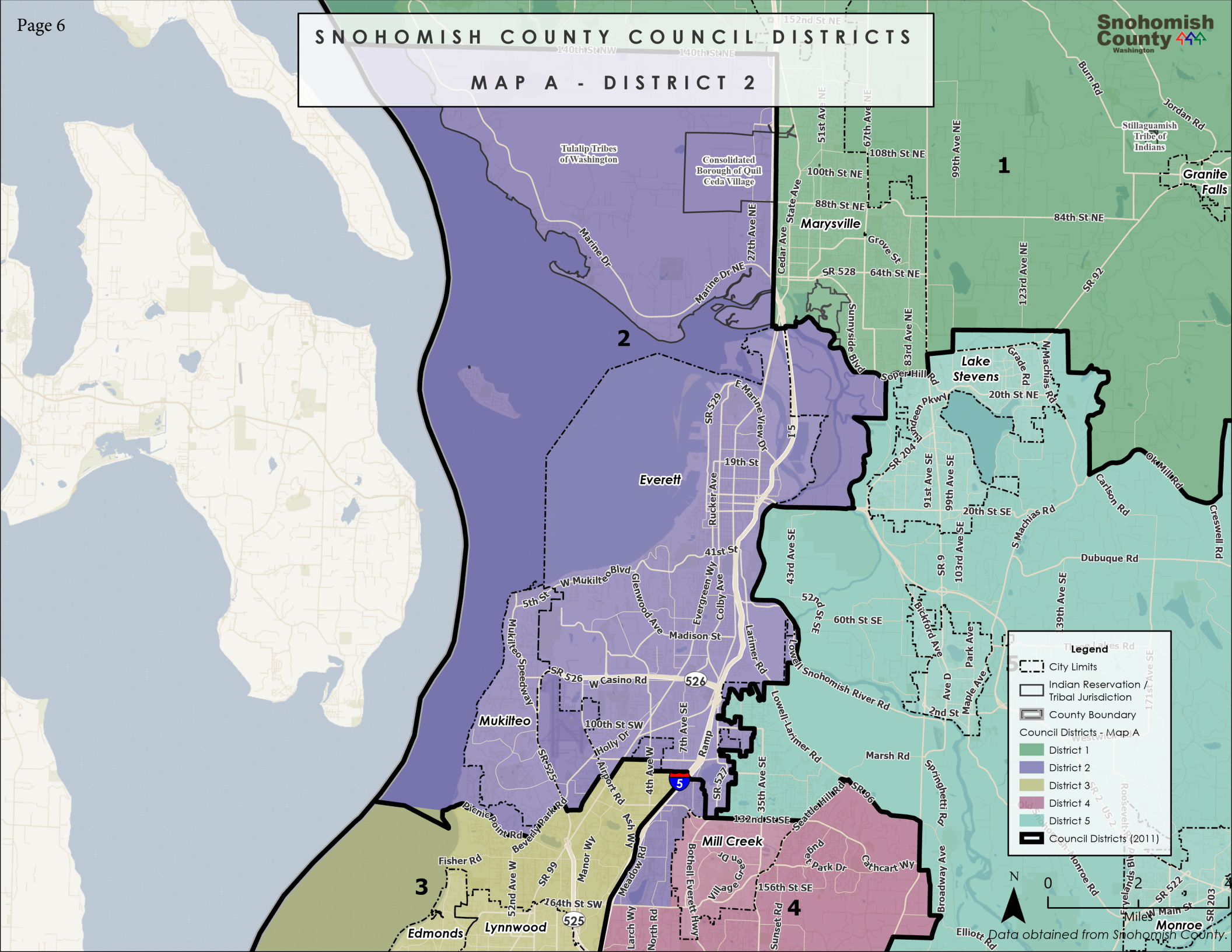
Legend

- City Limits
- Indian Reservation / Tribal Jurisdiction
- County Boundary
- Council Districts - Map A
 - District 1
 - District 2
 - District 3
 - District 4
 - District 5
- Council Districts (2011)



SNOHOMISH COUNTY COUNCIL DISTRICTS

MAP A - DISTRICT 2



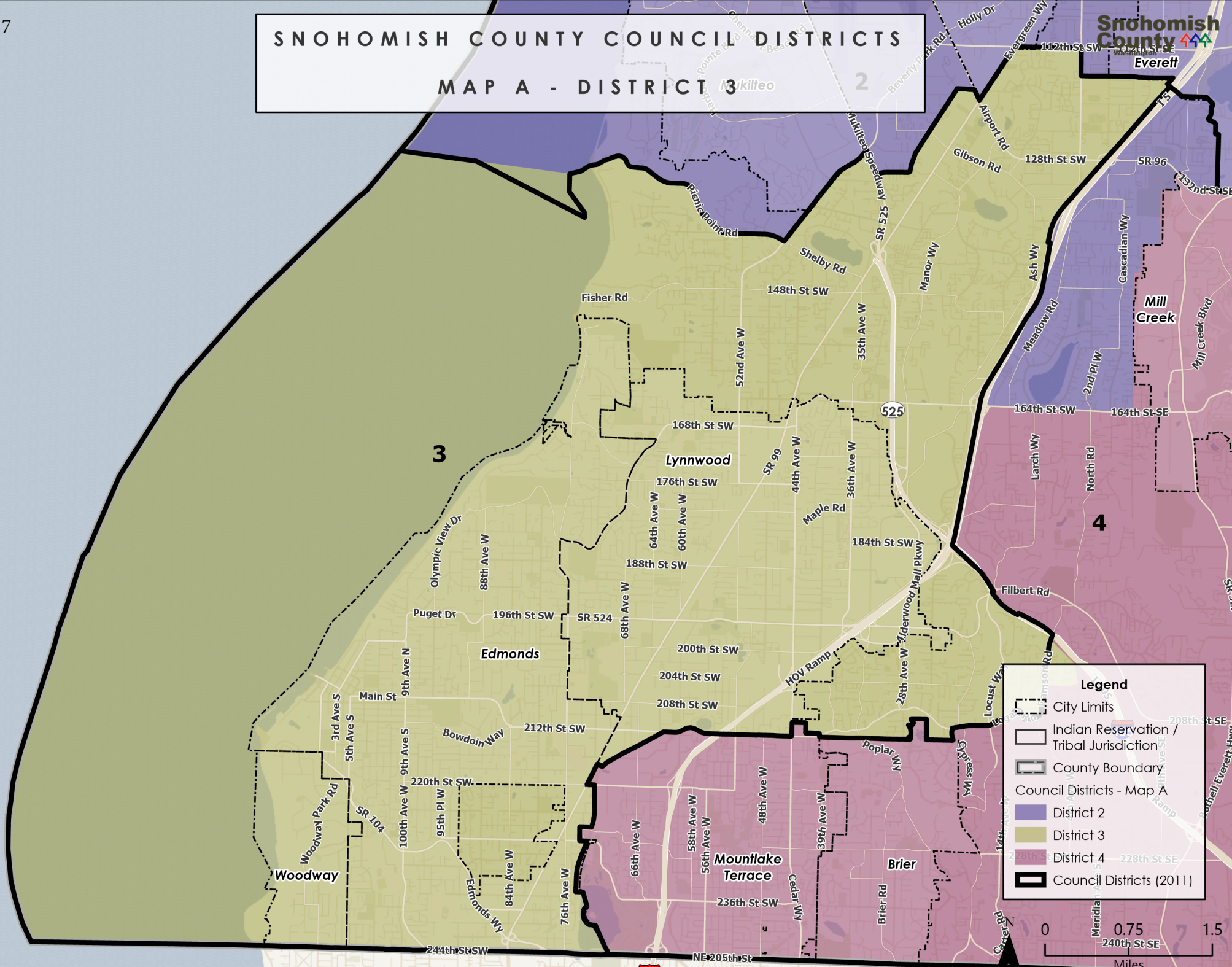
Legend

- City Limits
- Indian Reservation / Tribal Jurisdiction
- County Boundary
- Council Districts - Map A
 - District 1
 - District 2
 - District 3
 - District 4
 - District 5
- Council Districts (2011)

0 1 2 Miles
Data obtained from Snohomish County.

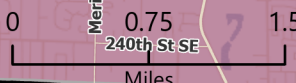
SNOHOMISH COUNTY COUNCIL DISTRICTS

MAP A - DISTRICT 3



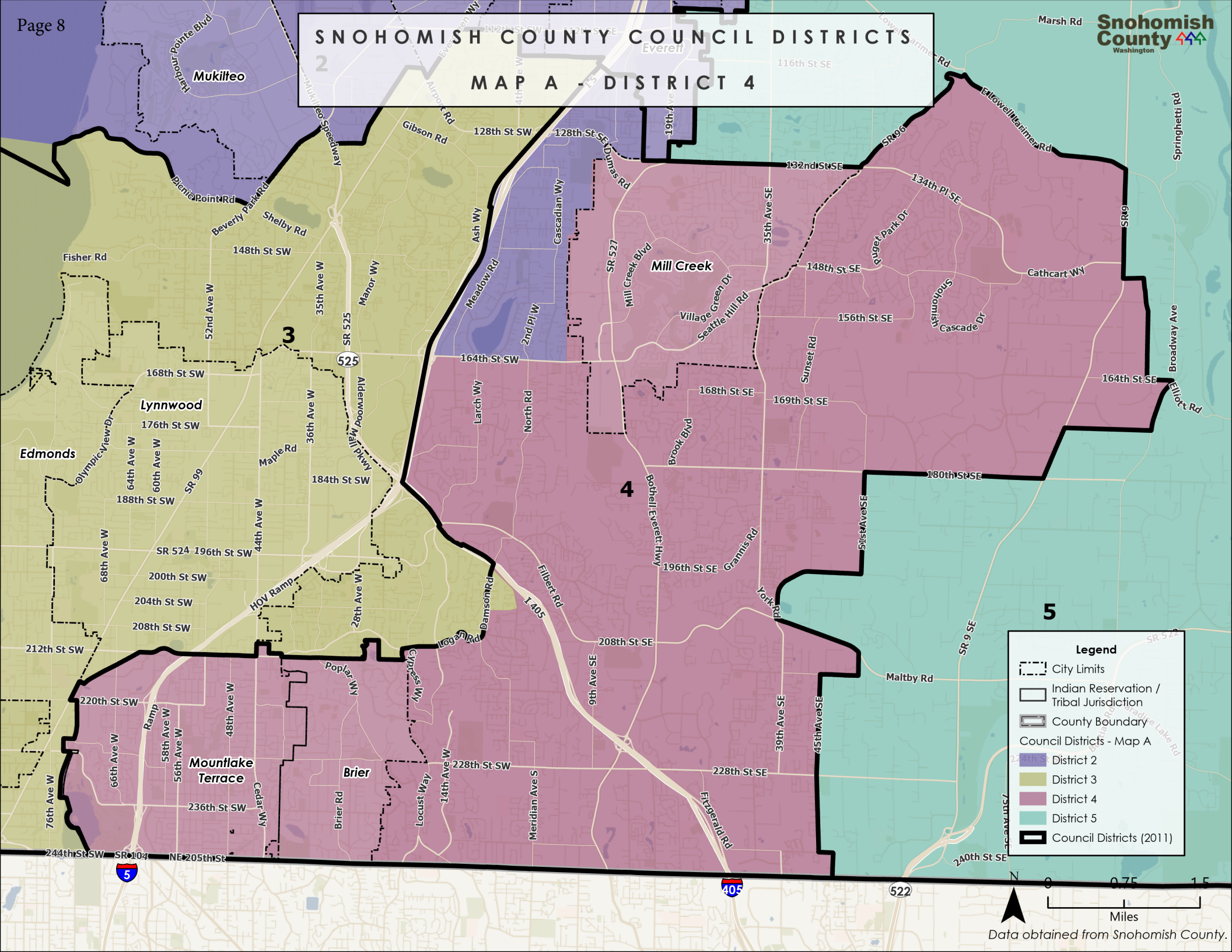
Legend

- City Limits
- Indian Reservation / Tribal Jurisdiction
- County Boundary
- Council Districts - Map A**
- District 2
- District 3
- District 4
- Council Districts (2011)



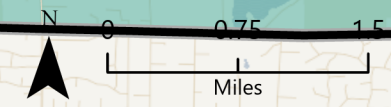
SNOHOMISH COUNTY COUNCIL DISTRICTS

MAP A - DISTRICT 4



Legend

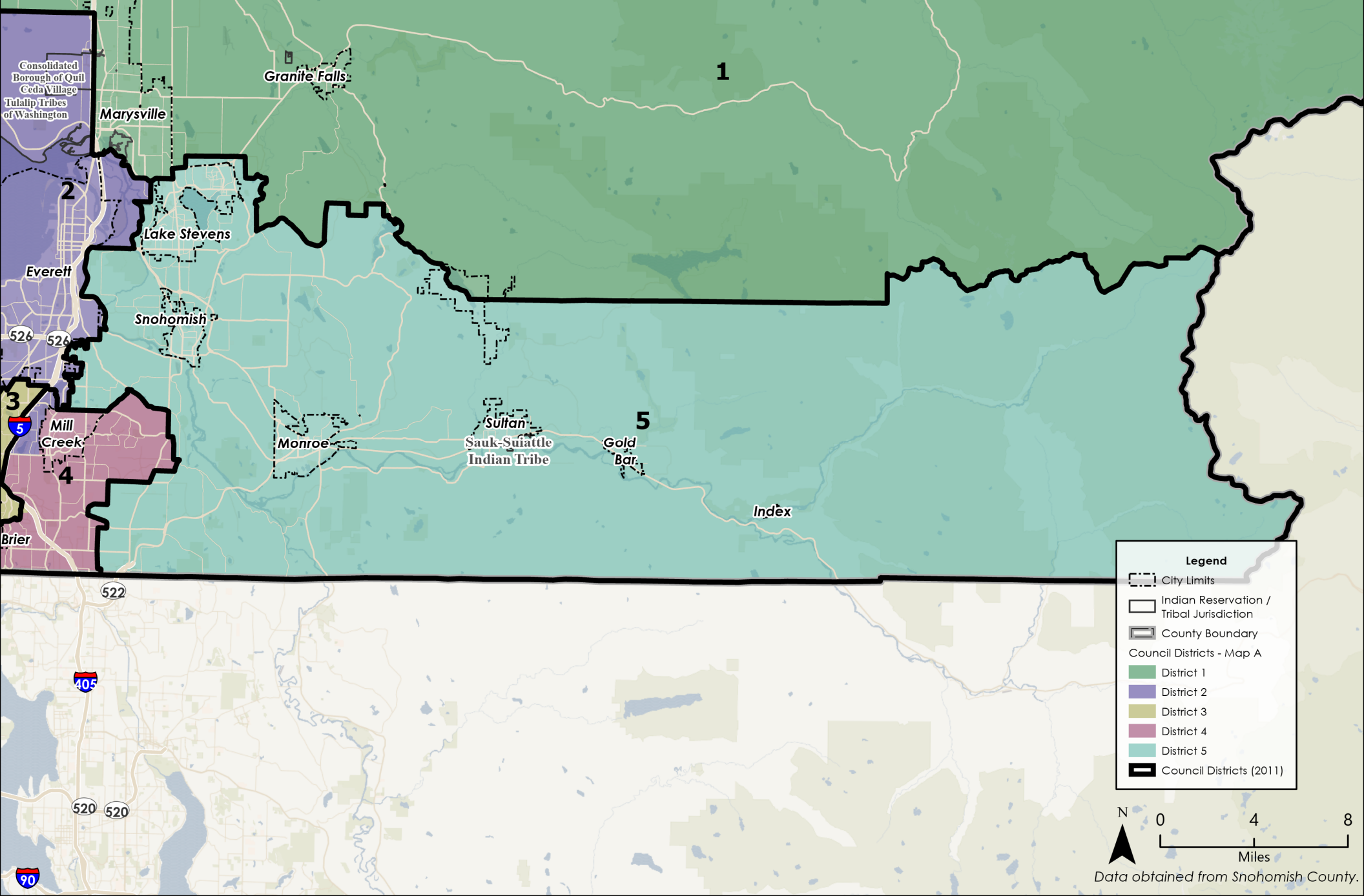
- City Limits
- Indian Reservation / Tribal Jurisdiction
- County Boundary
- Council Districts - Map A**
- District 2
- District 3
- District 4
- District 5
- Council Districts (2011)



Data obtained from Snohomish County.

SNOHOMISH COUNTY COUNCIL DISTRICTS

MAP A - DISTRICT 5



Legend

- City Limits
- Indian Reservation / Tribal Jurisdiction
- County Boundary
- Council Districts - Map A
 - District 1
 - District 2
 - District 3
 - District 4
 - District 5
- Council Districts (2011)



Data obtained from Snohomish County.