	<h1>CHANGE ORDER</h1>	CHANGE ORDER NUMBER
		6
		12/16/2024
		Page 1 of 6

<input checked="" type="checkbox"/> ORDERED BY ENGINEER UNDER SECTION 1-04.4 OF THE STANDARD SPECIFICATIONS. <input type="checkbox"/> CHANGE PROPOSED BY CONTRACTOR	PROJECT IDENTIFICATION PROJECT NAME: 36 th Avenue W & 35 th Avenue W, 164 th St SW to SR 99 PROJECT NUMBER: RC1783, RC1784, RR6337, RR6342, UPI 06-0014 Fed Aid #: STBGUL-2585(001)
CONTRACTOR ENDORSEMENT:	CONTRACTOR: Marshbank Construction, Inc.
<div style="display: flex; justify-content: space-between;"> <div>SIGNATURE</div> <div>DATE</div> </div>	ADDRESS: PO Box 97 3304 Old Hartford Rd Lake Stevens, WA 98258
<div style="text-align: center;">TITLE</div>	

In consideration of Section 1-04.4 of the Standard Specifications, make the following revisions to the contract:

Description

This change order compensates the Contractor for added costs associated with shifting the water main to the east as shown on revised attached AWWD plan sheets AW05, AW06, AW07, and AW13 with revisions dated 9/19/24.

RR6337, Group 4

Increase item #182 "Removing Asphalt Conc. Pavement" in the amount of 130 square yards.

Increase item #183 "Removal of AWWD Temporary Gravel Trench Patch" in the amount of 60 square yards.

Increase item #184 "Sawcutting" in the amount of 660 linear feet.

Add new item #185 "HMA for Temp. Patch Cl. ½ In. PG 58H-22" in the amount of 10 tons.

Add new item #186 "Water Main Alignment Revision" in the lump sum amount of \$57,363.

Measurement

"HMA for Temp. Patch Cl. ½ In. PG 58H-22" will be measured by the ton.

Existing contract items will be measured in accordance with the Contract.

Payment

"HMA for Temp. Patch Cl. ½ In. PG 58H-22" will be paid at the unit price of \$260.00 per ton and shall be full compensation for all costs, including antistripping additive, incurred to carry out the requirements of Section 5-04 except for those costs included in other items.

ORIGINAL CONTRACT AMOUNT	CURRENT CONTRACT AMOUNT	ESTIMATED NET CHANGE THIS ORDER	ESTIMATED CONTRACT TOTAL AFTER CHANGE
\$9,890,354.21	\$10,524,904.23	\$73,773.12	\$10,598,677.35
OTHER APPROVAL RECOMMENDED		OTHER APPROVAL RECOMMENDED	
SIGNATURE / REPRESENTING		ALDERWOOD WATER & WASTEWATER DISTRICT	
DATE		DATE	
APPROVAL RECOMMENDED		APPROVED	
CONSTRUCTION MANAGER		ENGINEERING SERVICES DIRECTOR	
DATE		DATE	

CHANGE ORDER

**CHANGE ORDER
NUMBER**

6

12/16/2024

Page 2 of 6

The lump sum contract payment for “Water Main Alignment Revision” shall be full compensation for all Work necessary for revising the water main location as shown on the revised plan sheets. The lump sum payment shall also include temporary materials and Work associated with the revised alignment.

Existing Contract items will be paid in accordance with the Contract and at the existing unit Contract price.

Contract Time

Four (4) workings days will be added to the Contract Time as a result of this Change Order. Compensation associated with added working days, and which has not been included in other bid items, will be addressed on a later change order.

September 19, 2024 - 1:17 PM - BRIANG - \\A\DW\W\FILES\CAD-GISE\ENGINEERING CAD\CAPITAL PROJECTS\W0602 SNOCO 35TH\35TH AVE PLANS\AW01-AW14.DWG - Layout Name: AW05

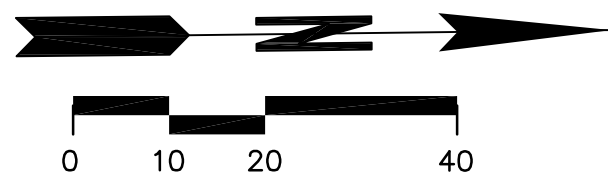
SECTION 3, T. 27 N, R. 4 E., W.M.

UTILITY NOTES

- 1 RELOCATE/REPLACE EXISTING HYDRANT ASSEMBLY PER WD-9. SALVAGE EXISTING HYDRANT TO AAWD AT AAWD'S REQUEST OR DISPOSE OF OFFSITE.
- 2 SERVICE CONNECTION, 1-INCH. INSTALL WATER SERVICE AND METER BOX PER AAWD STD DWG WD-2, WD-4 AND WD-4A. METER BOX LOCATION IS APPROXIMATE. COORDINATE WITH AAWD TO TRANSFER EXISTING METER AND REMOTE READ EQUIPMENT. RECONNECT PRIVATE SERVICE.
- 3 ADJUST MANHOLE. AAWD TO PROVIDE ADA-COMPLIANT MANHOLE FRAME & COVER PER SP 7-05.3, WHERE REQUIRED
- 4 FINAL VALVE BOX ADJUSTMENT. INTERMEDIATE VALVE BOX ADJUSTMENT WHERE REQUIRED
- 5 CAP AND SEAL AAWD CONDUIT INSIDE JUNCTION/PULL BOX
- 6 HYDRANT ASSEMBLY. INSTALL PER AAWD STD DWG WD-7
- 7 AAWD CONDUIT PULL BOX. INSTALL PER DETAIL ON SHEET AW14
- 8 AAWD CONDUIT JUNCTION BOX. INSTALL PER DETAIL ON SHEET AW14
- 9 REMOVE EXISTING WATER SERVICE
- 10 MAJOR SANITARY SEWER MANHOLE ADJUST
- 11 DROP MANHOLE MODIFICATIONS PER 7-05.3 SP, APPENDIX C, AND DETAIL 7 ON AW14
- 12 REMOVE EXISTING HYDRANT ASSEMBLY AND CAP AT WATER MAIN
- 13 SERVICE CONNECTION, 2-INCH. INSTALL WATER SERVICE AND METER BOX PER AAWD STD DWG WD-2 AND WD-5. METER BOX LOCATION IS APPROXIMATE. COORDINATE WITH AAWD TO TRANSFER EXISTING METER AND REMOTE READ EQUIPMENT. RECONNECT PRIVATE SERVICE.
- 14 REMOVE EXISTING WATER MAIN AND CAP BOTH SIDES

GENERAL NOTES

- 1 EXISTING 24-INCH GATE VALVE WITH BYPASS.
- 2 TRENCH RESTORATION PER EDDS 8-030
- 3 SWING 45-DEG BENDS TO PROVIDE MINIMUM 12 INCHES OF VERTICAL SEPARATION BETWEEN NEW WATER MAIN AND EXISTING OR PROPOSED UTILITIES. CONTRACTOR TO CONFIRM VERTICAL ELEVATIONS IN FIELD.
- 4 INSTALL NEW WATER MAIN ABOVE PROPOSED STORM DRAIN.
- 5 INSTALL NEW WATER MAIN BELOW PROPOSED STORM DRAIN.
- 6 EXISTING WATER MAIN IN 18-INCH CASING.
- 7 INSTALL SINGLE CONDUIT DUCT BANK BETWEEN JUNCTION BOXES AND PULL BOXES.
- 8 INSTALL TRIPLE CONDUIT DUCT BANK BETWEEN JUNCTION BOXES. UNLESS SHOWN OTHERWISE.



W0602

8/9/24	1	TRIPLE CONDUIT / MODIFY INJECTION VAULT	BJG	LCM
9/19/24	2	WATER / COMM CONDUIT REALIGNMENT	BJG	LCM
Change Order #6 12/16/24 Page 3 of 6				
DATE	NO.	REVISION	BY	



UPI NO.: 06-0014	FED. AID PROJ. NO.:
SURVEY NO.: 005-08	FIELD BOOK(S):
HORZ. DATUM: NAD 83	VERT. DATUM: NAVD88
DESIGNED BY: LM	DRAWN BY: BG



REVIEWED AND APPROVED FOR CONSTRUCTION
DOUGLAS W. McCORMICK, P.E. SNOHOMISH COUNTY ENGINEER
DATE APPROVED:



36TH AVE W & 35TH AVE W 164TH ST. SW TO 148TH ST. SW STA 72+00 TO 80+50 UTILITY INFORMATION PLAN	REFERENCE SHEET NO. AW05 SHEET 5 OF 14 SHEETS
---	---

EXISTING SERVICE PREVIOUSLY DELETED AND CAPPED AT MAIN (REMOVED FROM THESE PLANS)

DESIGN MODIFICATIONS ON THIS SHEET:
REALIGNMENT OF WATER AND COMM 2'-3" TO THE EAST
WATER MAIN VERTICAL REALIGNMENT

GENERAL NOTES

- EXISTING 24-INCH GATE VALVE WITH BYPASS.
- TRENCH RESTORATION PER EDDS 8-030
- SWING 45-DEG BENDS TO PROVIDE MINIMUM 12 INCHES OF VERTICAL SEPARATION BETWEEN NEW WATER MAIN AND EXISTING OR PROPOSED UTILITIES. CONTRACTOR TO CONFIRM VERTICAL ELEVATIONS IN FIELD.
- INSTALL NEW WATER MAIN ABOVE PROPOSED STORM DRAIN.
- INSTALL NEW WATER MAIN BELOW PROPOSED STORM DRAIN.
- EXISTING WATER MAIN IN 18-INCH CASING.
- INSTALL SINGLE CONDUIT DUCT BANK BETWEEN JUNCTION BOXES AND PULL BOXES.
- INSTALL TRIPLE CONDUIT DUCT BANK BETWEEN JUNCTION BOXES. UNLESS SHOWN OTHERWISE.

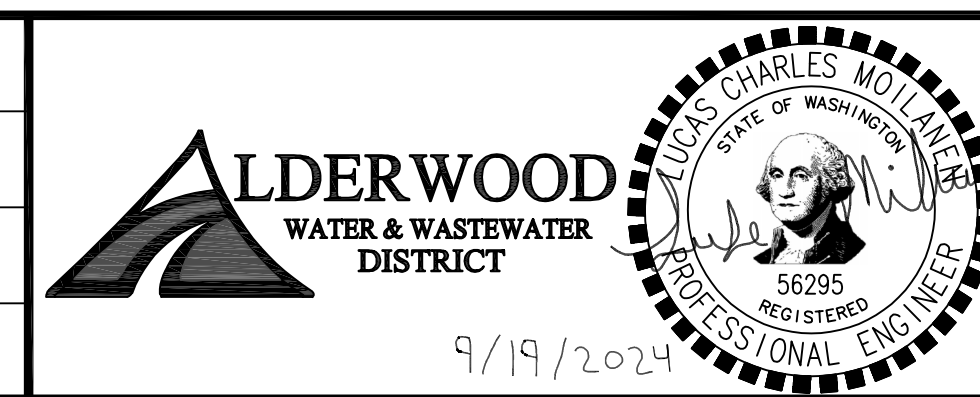
W0602

- 1 RELOCATE/REPLACE EXISTING HYDRANT ASSEMBLY PER WD-9. SALVAGE EXISTING HYDRANT TO AAWWD AT AAWWD'S REQUEST OR DISPOSE OF OFFSITE.
- 2 SERVICE CONNECTION, 1-INCH. INSTALL WATER SERVICE AND METER BOX PER AAWWD STD DWG WD-2, WD-4 AND WD-4A. METER BOX LOCATION IS APPROXIMATE. COORDINATE WITH AAWWD TO TRANSFER EXISTING METER AND REMOTE READ EQUIPMENT. RECONNECT PRIVATE SERVICE.
- 3 ADJUST MANHOLE. AAWWD TO PROVIDE ADA-COMPLIANT MANHOLE FRAME & COVER PER SP 7-05.3, WHERE REQUIRED
- 4 FINAL VALVE BOX ADJUSTMENT. INTERMEDIATE VALVE BOX ADJUSTMENT WHERE REQUIRED
- 5 CAP AND SEAL AAWWD CONDUIT INSIDE JUNCTION/PULL BOX
- 6 HYDRANT ASSEMBLY. INSTALL PER AAWWD STD DWG WD-7
- 7 AAWWD CONDUIT PULL BOX. INSTALL PER DETAIL ON SHEET AW14
- 8 AAWWD CONDUIT JUNCTION BOX. INSTALL PER DETAIL ON SHEET AW14
- 9 REMOVE EXISTING WATER SERVICE
- 10 MAJOR SANITARY SEWER MANHOLE ADJUST
- 11 DROP MANHOLE MODIFICATIONS PER 7-05.3 SP, APPENDIX C, AND DETAIL 7 ON AW14
- 12 REMOVE EXISTING HYDRANT ASSEMBLY AND CAP AT WATER MAIN
- 13 SERVICE CONNECTION, 2-INCH. INSTALL WATER SERVICE AND METER BOX PER AAWWD STD DWG WD-2 AND WD-5. METER BOX LOCATION IS APPROXIMATE. COORDINATE WITH AAWWD TO TRANSFER EXISTING METER AND REMOTE READ EQUIPMENT. RECONNECT PRIVATE SERVICE.
- 14 REMOVE EXISTING WATER MAIN AND CAP BOTH SIDES

1. EXISTING 24-INCH GATE VALVE WITH BYPASS.
2. TRENCH RESTORATION PER EDDS 8-030
3. SWING 45-DEG BENDS TO PROVIDE MINIMUM 12 INCHES OF VERTICAL SEPARATION BETWEEN NEW WATER MAIN AND EXISTING OR PROPOSED UTILITIES. CONTRACTOR TO CONFIRM VERTICAL ELEVATIONS IN FIELD.
4. INSTALL NEW WATER MAIN ABOVE PROPOSED STORM DRAIN.
5. INSTALL NEW WATER MAIN BELOW PROPOSED STORM DRAIN.
6. EXISTING WATER MAIN IN 18-INCH CASING.
7. INSTALL SINGLE CONDUIT DUCT BANK BETWEEN JUNCTION BOXES AND PULL BOXES.
8. INSTALL TRIPLE CONDUIT DUCT BANK BETWEEN JUNCTION BOXES. UNLESS SHOWN OTHERWISE.

[illegible]

UPI NO.: 06-0014	FED. AID PROJ. NO.:
SURVEY NO.: 005-08	FIELD BOOK(S):
HORZ. DATUM: NAD 83	VERT. DATUM: NAVD88
DESIGNED BY: LM	DRAWN BY: BG



REVIEWED AND APPROVED
FOR CONSTRUCTION

DOUGLAS W. McCORMICK, P.E.
SNOHOMISH COUNTY ENGINEER

DATE APPROVED:

SNOHOMISH COUNTY DEPARTMENT OF PUBLIC WORKS

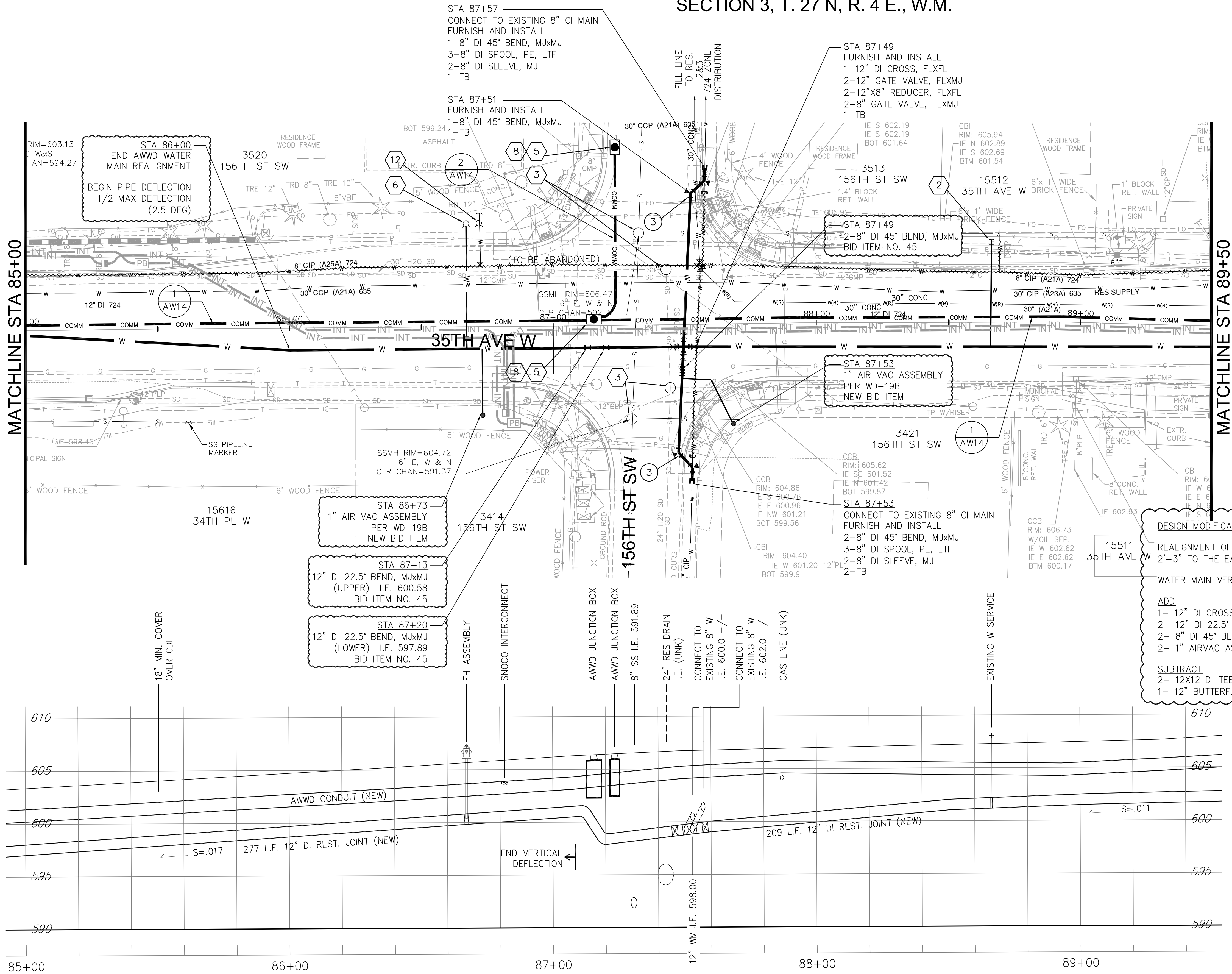
36TH AVE W & 35TH AVE W
164TH ST. SW TO 148TH ST. SW
STA 80+50 TO 85+00
UTILITY INFORMATION PLAN

REFERENCE
SHEET NO.
AW06

SHEET
6
OF
14
SHEETS

September 19, 2024 - 1:18 PM - BRIANG - \\A\WD\W\FILES\CAD-GIS\ENGINEERING CAD\CAPITAL PROJECTS\35TH AVE PLANS\AW01-AW14.DWG - Layout Name: AW07

SECTION 3, T. 27 N, R. 4 E., W.M.

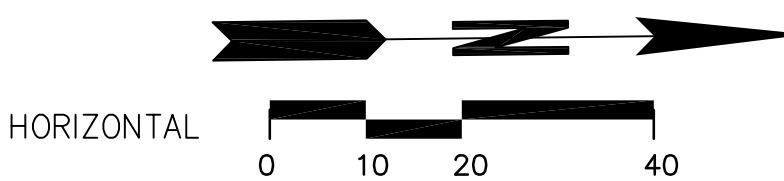


UTILITY NOTES

- 1 RELOCATE/REPLACE EXISTING HYDRANT ASSEMBLY PER WD-9. SALVAGE EXISTING HYDRANT TO AWWD AT AWWD'S REQUEST OR DISPOSE OF OFFSITE.
- 2 SERVICE CONNECTION, 1-INCH. INSTALL WATER SERVICE AND METER BOX PER AWWD STD DWG WD-2, WD-4 AND WD-4A. METER BOX LOCATION IS APPROXIMATE. COORDINATE WITH AWWD TO TRANSFER EXISTING METER AND REMOTE READ EQUIPMENT. RECONNECT PRIVATE SERVICE.
- 3 ADJUST MANHOLE. AWWD TO PROVIDE ADA-COMPLIANT MANHOLE FRAME & COVER PER SP 7-05.3, WHERE REQUIRED
- 4 FINAL VALVE BOX ADJUSTMENT. INTERMEDIATE VALVE BOX ADJUSTMENT WHERE REQUIRED
- 5 CAP AND SEAL AWWD CONDUIT INSIDE JUNCTION/PULL BOX
- 6 HYDRANT ASSEMBLY. INSTALL PER AWWD STD DWG WD-7
- 7 AWWD CONDUIT PULL BOX. INSTALL PER DETAIL ON SHEET AW14
- 8 AWWD CONDUIT JUNCTION BOX. INSTALL PER DETAIL ON SHEET AW14
- 9 REMOVE EXISTING WATER SERVICE
- 10 MAJOR SANITARY SEWER MANHOLE ADJUST
- 11 DROP MANHOLE MODIFICATIONS PER 7-05.3 SP, APPENDIX C, AND DETAIL 7 ON AW14
- 12 REMOVE EXISTING HYDRANT ASSEMBLY AND CAP AT WATER MAIN
- 13 SERVICE CONNECTION, 2-INCH. INSTALL WATER SERVICE AND METER BOX PER AWWD STD DWG WD-2 AND WD-5. METER BOX LOCATION IS APPROXIMATE. COORDINATE WITH AWWD TO TRANSFER EXISTING METER AND REMOTE READ EQUIPMENT. RECONNECT PRIVATE SERVICE.
- 14 REMOVE EXISTING WATER MAIN AND CAP BOTH SIDES

GENERAL NOTES

- 1 EXISTING 24-INCH GATE VALVE WITH BYPASS.
- 2 TRENCH RESTORATION PER EDDS 8-030
- 3 SWING 45-DEG BENDS TO PROVIDE MINIMUM 12 INCHES OF VERTICAL SEPARATION BETWEEN NEW WATER MAIN AND EXISTING OR PROPOSED UTILITIES. CONTRACTOR TO CONFIRM VERTICAL ELEVATIONS IN FIELD.
- 4 INSTALL NEW WATER MAIN ABOVE PROPOSED STORM DRAIN.
- 5 INSTALL NEW WATER MAIN BELOW PROPOSED STORM DRAIN.
- 6 EXISTING WATER MAIN IN 18-INCH CASING.
- 7 INSTALL SINGLE CONDUIT DUCT BANK BETWEEN JUNCTION BOXES AND PULL BOXES.
- 8 INSTALL TRIPLE CONDUIT DUCT BANK BETWEEN JUNCTION BOXES. UNLESS SHOWN OTHERWISE.

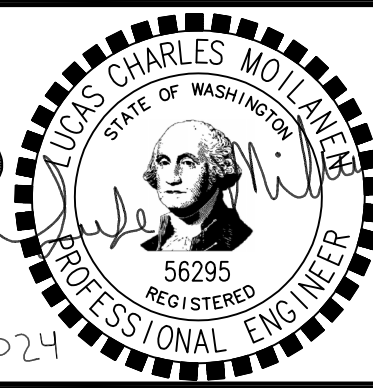
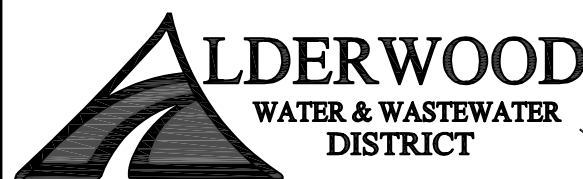


W0602

8/9/24	1	TRIPLE CONDUIT / MODIFY INJECTION VAULT	BJG	LCM
9/19/24	2	WATER / COMM CONDUIT REALIGNMENT	BJG	LCM
Change Order #6 12/16/24 Page 5 of 6				
DATE	NO.	REVISION	BY	



UPI NO.: 06-0014	FED. AID PROJ. NO.:
SURVEY NO.: 005-08	FIELD BOOK(S):
HORZ. DATUM: NAD 83	VERT. DATUM: NAVD88
DESIGNED BY: LM	DRAWN BY: BG



REVIEWED AND APPROVED
FOR CONSTRUCTION

DOUGLAS W. McCORMICK, P.E.
SNOHOMISH COUNTY ENGINEER

DATE APPROVED:

SNOHOMISH COUNTY
DEPARTMENT OF
PUBLIC WORKS

FUNDING NO. RC1491

36TH AVE W & 35TH AVE W
164TH ST. SW TO 148TH ST. SW
STA 85+00 TO 89+50
UTILITY INFORMATION PLAN

REFERENCE SHEET NO. AW07
SHEET 7 OF 14 SHEETS

September 19, 2024 - 1:21 PM - BRIANG - \\AWD\WANFILES\CAD-GISENGINEERING\CAD\CAPITAL PROJECTS\35TH AVE PLANS\AW01-AW14.DWG - Layout Name: AW13

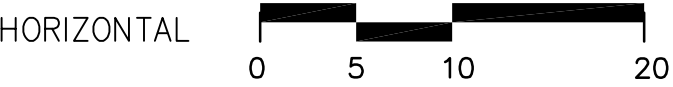
SECTION 3, T. 27 N, R. 4 E., W.M.

UTILITY NOTES

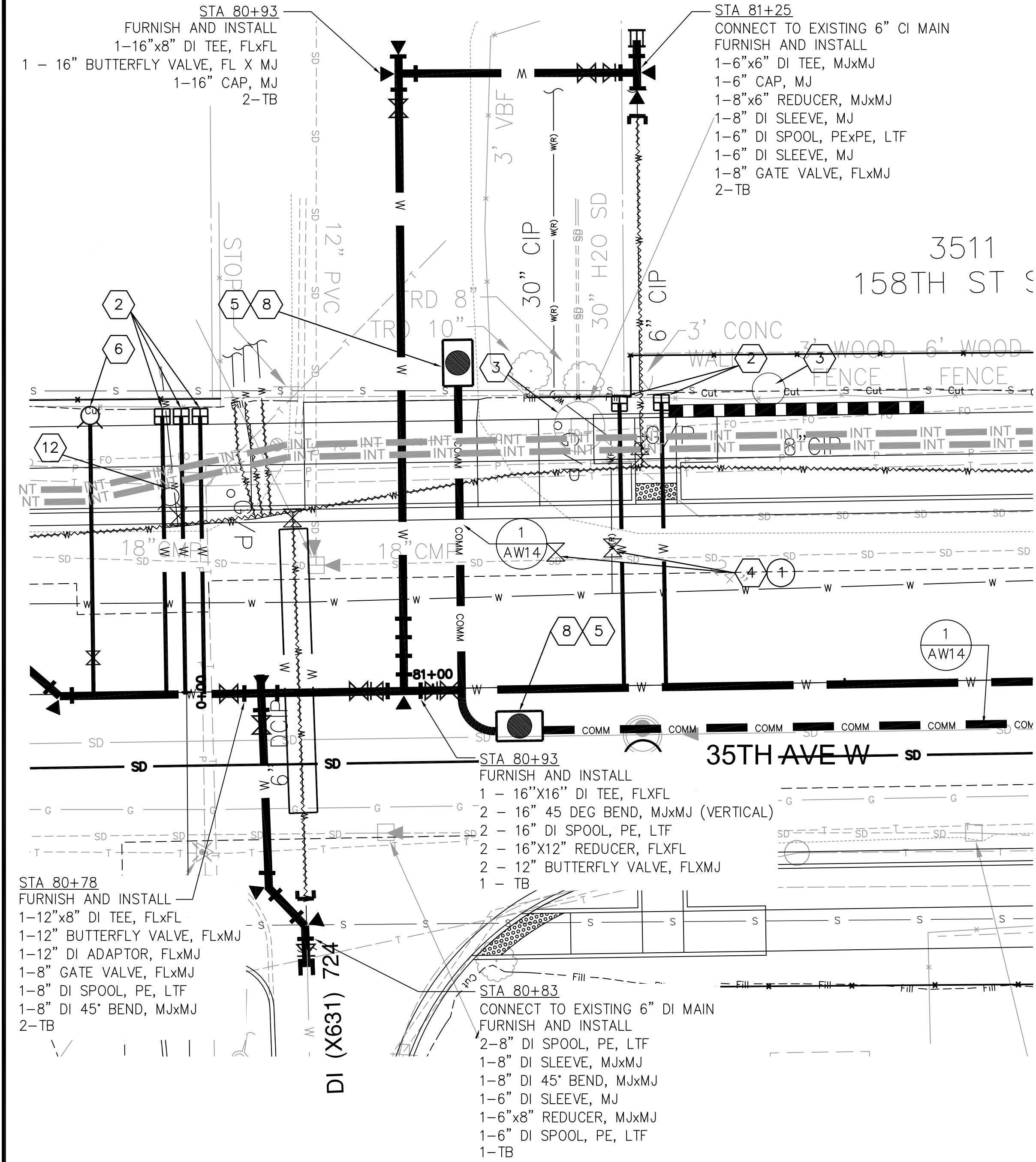
- 1
- RELOCATE/REPLACE EXISTING HYDRANT ASSEMBLY PER WD-9. SALVAGE EXISTING HYDRANT TO AAWD AT AAWD'S REQUEST OR DISPOSE OF OFFSITE.
- 2
- SERVICE CONNECTION, 1-INCH. INSTALL WATER SERVICE AND METER BOX PER AAWD STD DWG WD-2, WD-4 AND WD-4A. METER BOX LOCATION IS APPROXIMATE. COORDINATE WITH AAWD TO TRANSFER EXISTING METER AND REMOTE READ EQUIPMENT. RECONNECT PRIVATE SERVICE.
- 3
- ADJUST MANHOLE. AAWD TO PROVIDE ADA-COMPLIANT MANHOLE FRAME & COVER PER SP 7-05.3, WHERE REQUIRED
- 4
- FINAL VALVE BOX ADJUSTMENT. INTERMEDIATE VALVE BOX ADJUSTMENT WHERE REQUIRED
- 5
- CAP AND SEAL AAWD CONDUIT INSIDE JUNCTION/PULL BOX
- 6
- HYDRANT ASSEMBLY. INSTALL PER AAWD STD DWG WD-7
- 7
- AAWD CONDUIT PULL BOX. INSTALL PER DETAIL ON SHEET AW14
- 8
- AAWD CONDUIT JUNCTION BOX. INSTALL PER DETAIL ON SHEET AW14
- 9
- REMOVE EXISTING WATER SERVICE
- 10
- MAJOR SANITARY SEWER MANHOLE ADJUST
- 11
- DROP MANHOLE MODIFICATIONS PER 7-05.3 SP, APPENDIX C, AND DETAIL 7 ON AW14
- 12
- REMOVE EXISTING HYDRANT ASSEMBLY AND CAP AT WATER MAIN
- 13
- SERVICE CONNECTION, 2-INCH. INSTALL WATER SERVICE AND METER BOX PER AAWD STD DWG WD-2 AND WD-5. METER BOX LOCATION IS APPROXIMATE. COORDINATE WITH AAWD TO TRANSFER EXISTING METER AND REMOTE READ EQUIPMENT. RECONNECT PRIVATE SERVICE.
- 14
- REMOVE EXISTING WATER MAIN AND CAP BOTH SIDES

GENERAL NOTES

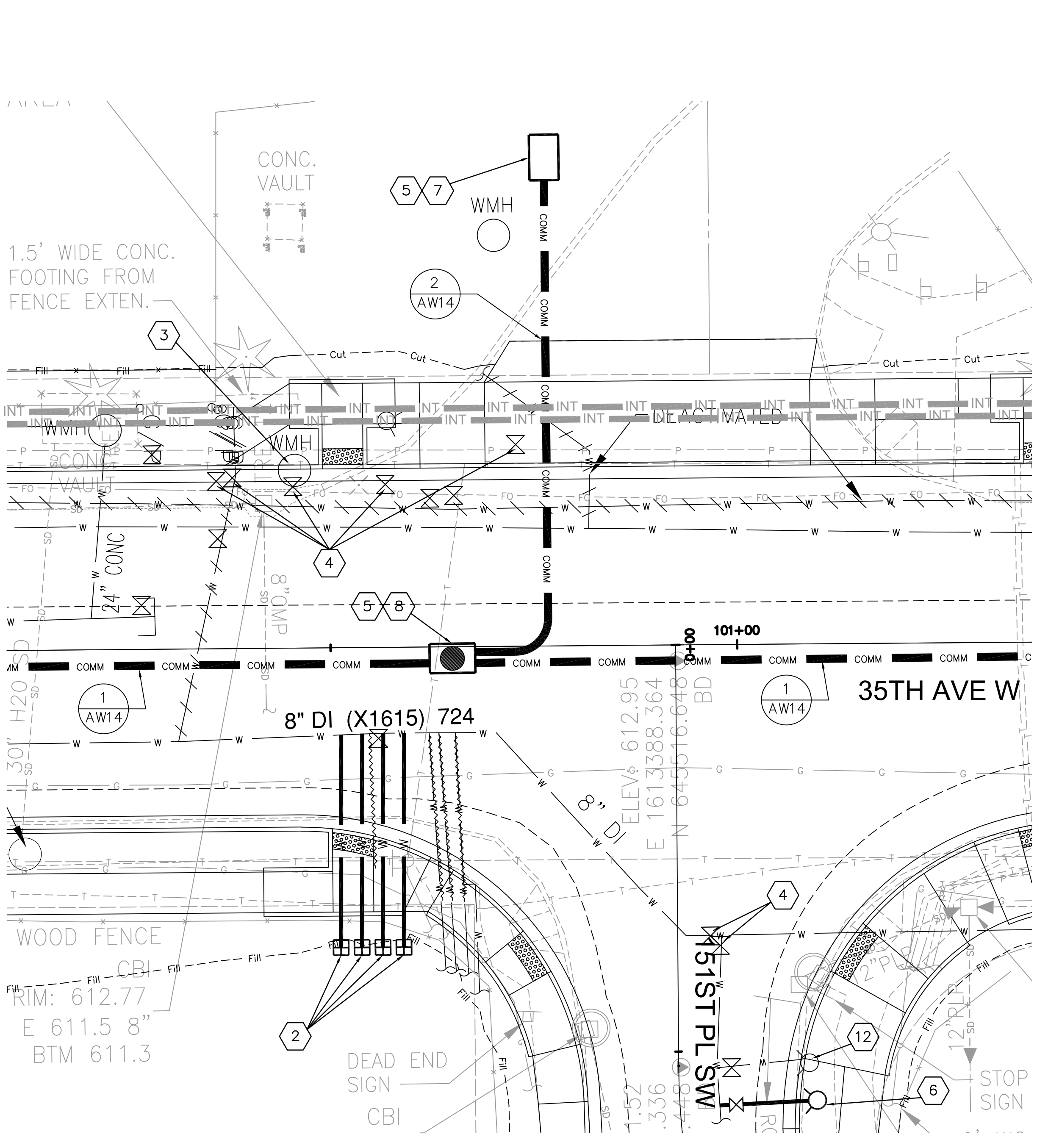
- 1
- EXISTING 24-INCH GATE VALVE WITH BYPASS.
- 2
- TRENCH RESTORATION PER EDDS 8-030
- 3
- SWING 45-DEG BENDS TO PROVIDE MINIMUM 12 INCHES OF VERTICAL SEPARATION BETWEEN NEW WATER MAIN AND EXISTING OR PROPOSED UTILITIES. CONTRACTOR TO CONFIRM VERTICAL ELEVATIONS IN FIELD.
- 4
- INSTALL NEW WATER MAIN ABOVE PROPOSED STORM DRAIN.
- 5
- INSTALL NEW WATER MAIN BELOW PROPOSED STORM DRAIN.
- 6
- EXISTING WATER MAIN IN 18-INCH CASING.
- 7
- INSTALL SINGLE CONDUIT DUCT BANK BETWEEN JUNCTION BOXES AND PULL BOXES.
- 8
- INSTALL TRIPLE CONDUIT DUCT BANK BETWEEN JUNCTION BOXES. UNLESS SHOWN OTHERWISE.



W0602



1
AW13
ENLARGED SITE PLAN



2
AW13
ENLARGED SITE PLAN

8/07/24	1	TRIPLE CONDUIT / MODIFY INJECTION VAULT	BJG	LCM
9/19/24	2	WATER / COMM CONDUIT REALIGNMENT	BJG	LCM
Change Order #6 12/16/24 Page 6 of 6				
DATE	NO.	REVISION	BY	



UPI NO.: 06-0014	FED. AID PROJ. NO.:
SURVEY NO.: 005-08	FIELD BOOK(S):
HORZ. DATUM: NAD 83	VERT. DATUM: NAVD88
DESIGNED BY: LM	DRAWN BY: BG



REVIEWED AND APPROVED FOR CONSTRUCTION
DOUGLAS W. MCCORMICK, P.E. SNOHOMISH COUNTY ENGINEER
DATE APPROVED:



36TH AVE W & 35TH AVE W 164TH ST. SW TO 148TH ST. SW	REFERENCE SHEET NO. AW13
ENLARGED SITE PLANS	SHEET 13 OF 14 SHEETS



SNOHOMISH
COUNTY
DEPARTMENT
OF PUBLIC
WORKS

CHANGE ORDER ESTIMATE

CHANGE ORDER NUMBER

6

12/16/2024

Page 1 of 1

PROJECT NAME: 36th Avenue W & 35th Avenue W,
164th St SW to SR 99

PROJECT NUMBER: RR6337

PROJECT
ENGINEER: Todd Nielsen

FED AID NUMBER: STBGUL-2585(001)

ITEM NO.	GROUP NO.	Item Description	UNIT MEAS.	UNIT PRICE	EST. QUANTITY	EST. CHANGE
182	4	Removing Asphalt Conc. Pavement	SY	\$17.00	130.00	\$2,210.00
183	4	Removal of AWWD Temporary Gravel Trench Patch	SY	\$10.50	60.00	\$630.00
184	4	Sawcutting	LF	\$6.00	660.00	\$3,960.00
185	4	HMA for Temp. Patch Cl. 1/2 IN. PG 58H-22	TON	\$260.00	10.00	\$2,600.00
186	4	Water Main Alignment Revision	LS	\$57,363.00	1.00	\$57,363.00
		Group 4 subtotal:				\$66,763.00
		10.5% Group 4 tax:				\$7,010.12
		Group 4 total:				\$73,773.12
TOTAL						\$73,773.12