

CHANGE ORDER

<input checked="" type="checkbox"/> ORDERED BY ENGINEER UNDER SECTION 1-04.4 OF THE STANDARD SPECIFICATIONS. <input type="checkbox"/> CHANGE PROPOSED BY CONTRACTOR	PROJECT IDENTIFICATION PROJECT NAME: 36 th Avenue W & 35 th Avenue W, 164 th St SW to SR 99 PROJECT NUMBER: RC1783, RC1784, RR6337, RR6342, UPI 06-0014 Fed Aid #: STBGUL-2585(001)
CONTRACTOR ENDORSEMENT:	CONTRACTOR: Marshbank Construction, Inc.
<div style="display: flex; justify-content: space-between;"> <div>SIGNATURE</div> <div>DATE</div> </div>	ADDRESS: PO Box 97 3304 Old Hartford Rd Lake Stevens, WA 98258
<div style="text-align: center;">TITLE</div>	

In consideration of Section 1-04.4 of the Standard Specification, make the following revisions to the contract:

Description

This Change Order compensates the Contractor for added work to construct an extension of the AWWD Communication Duct bank as shown on the revised attached plan sheets AW11-AW12 with revisions dated 9/19/24. This duct bank will begin at 151st Pl SW and continue north to their new Operations Center Headquarters at 14807 Hwy 99 S.

RR6337, Group 4

Increase item #36 "Bank Run Gravel for Trench Backfill" in the amount of 300 Tons.
Decrease item #49 "AWWD Single Conduit Duct Bank" in the amount of 340 LF.
Increase item #50 "AWWD Triple Conduit Duct Bank" in the amount of 770 LF.
Increase item #51 "AWWD Junction Box" in the amount of 2 EA.
Increase item #65 "HMA for Pavement Repair CL. ½ In. PG 58H-22" in the amount of 50 Tons.
Increase item #176 "Class II Disposal Premium Type B" in the amount of 450 Tons.
Increase item #180 "Class II Disposal Premium Type C AWWD" in the amount of 200 Tons.
Add new item #182 "Removing Asphalt Concrete Pavement" in the amount of 200 Square Yards.
Add new item #183 "Removal of AWWD Temporary Gravel Trench Patch" in the amount of 200 Square Yards.
Add new item #184 "Sawcutting" in the amount of 880 LF.

Measurement

Measurement of "Removing Asphalt Concrete Pavement" will be measured by the square yard of asphalt concrete pavement removed.

ORIGINAL CONTRACT AMOUNT	CURRENT CONTRACT AMOUNT	ESTIMATED NET CHANGE THIS ORDER	ESTIMATED CONTRACT TOTAL AFTER CHANGE
\$9,890,354.21	\$10,401,392.85	\$123,511.38	\$10,524,904.23
APPROVAL RECOMMENDED		OTHER APPROVAL RECOMMENDED	
ALDERWOOD WATER & WASTEWATER DISTRICT	DATE	SIGNATURE / REPRESENTING	DATE
APPROVAL RECOMMENDED		APPROVED	
CONSTRUCTION MANAGER	DATE	ENGINEERING SERVICES DIRECTOR	DATE

CHANGE ORDER

CHANGE ORDER
NUMBER

5

12/9/2024

Page 2 of 2

Measurement of "Removal of AWWD Temporary Gravel Trench Patch" will be measured by the square yard of gravel removed.

Measurement of "Sawcutting" will be measured by the linear foot of full depth sawcutting performed.

Existing Contract items will be measured in accordance with the Contract.

Payment

Item #182 "Removing Asphalt Concrete Pavement" will be paid at the unit price of \$17.00 per square yard and shall be full compensation for all Work necessary for the removal and disposal of the asphalt concrete pavement that was not included in other bid items, except for the Class II disposal premium that will be paid in accordance with the Contract.

Item #183 "Removal of AWWD Temporary Gravel Trench Patch" will be paid at the unit price of \$10.50 per square yard and shall be full compensation for all Work necessary for the removal, haul, and disposal of temporary fill materials placed in AWWD's extended utility trenches that was not included in other bid items, except for the Class II disposal premium that will be paid in accordance with the Contract.

Item #184 "Sawcutting" will be paid at the unit price of \$6.00 per linear foot and shall be full compensation for all Work necessary including the removal and disposal of sawcutting slurry for sawcutting that was not included in other bid items.

Existing bid items and existing contract items added by previous change orders will be paid in accordance with the Contract and at the unit Contract price.

Contract Time

Three (3) working days will be added to the Contract Time as a result of this Change Order. Compensation associated with added working days, and which has not been included in other bid items, will be addressed on a later change order.



SNOHOMISH
COUNTY
DEPARTMENT
OF PUBLIC
WORKS

CHANGE ORDER ESTIMATE

CHANGE ORDER NUMBER

5

12/9/2024

Page 1 of 1

PROJECT NAME:

36th Avenue W & 35th Avenue W,
164th St SW to SR 99

PROJECT NUMBER:

RC1783, RC1784, RR6337, RR6342, UPI 06
0014

PROJECT
ENGINEER:

Todd Nielsen

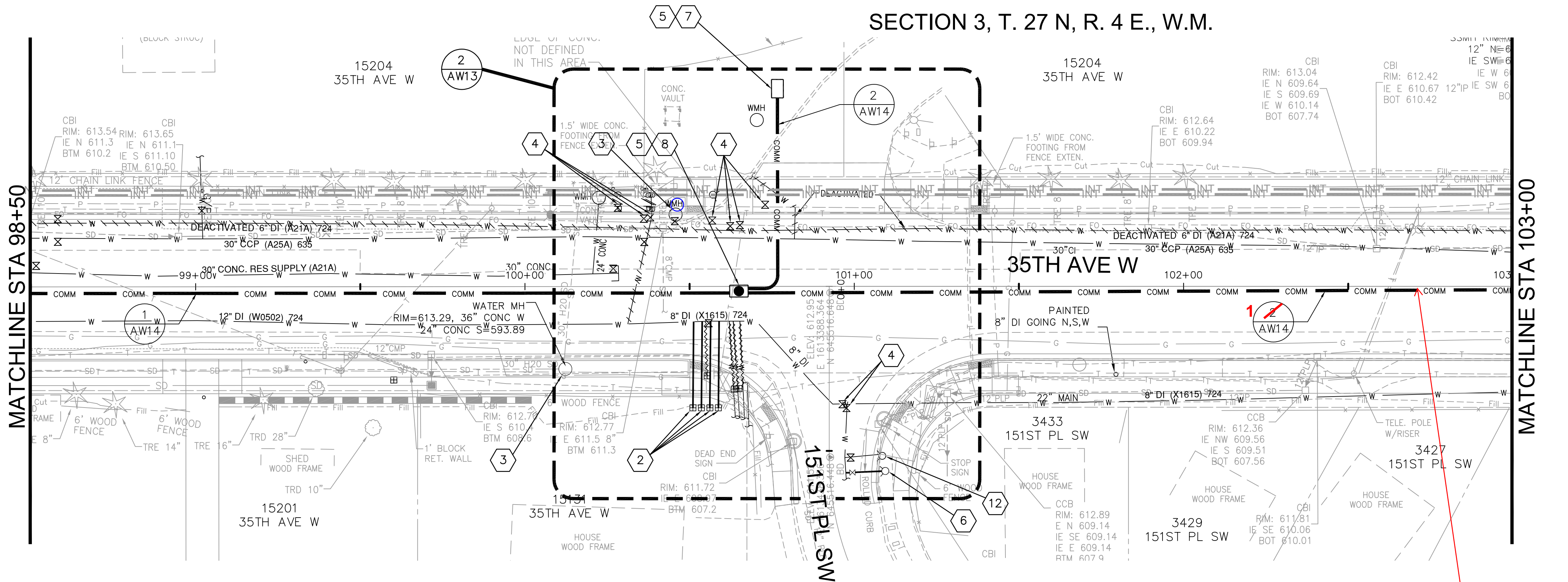
FED AID NUMBER:

STBGUL-2585(001)

ITEM NO.	GROUP NO.	Item Description	UNIT MEAS.	UNIT PRICE	EST. QUANTITY	EST. CHANGE
36	4	Bank Run Gravel for Trench Backfill	TON	\$17.50	300.00	\$5,250.00
49	4	AWWD Single Conduit Duct Bank	LF	\$65.00	(340.00)	(\$22,100.00)
50	4	AWWD Triple Conduit Duct Bank	LF	\$91.00	770.00	\$70,070.00
51	4	AWWD Conduit Junction Box	EACH	\$8,000.00	2.00	\$16,000.00
65	4	HMA for Pavement Repair Cl. 1/2 In. PG 58H-22	TON	\$186.00	50.00	\$9,300.00
176	4	Class II Disposal Premium Type B	TON	\$31.50	450.00	\$14,175.00
180	4	Class II Disposal Premium Type C - AWWD	TON	\$41.50	200.00	\$8,300.00
182	4	Removing Asphalt Conc. Pavement	SY	\$17.00	200.00	\$3,400.00
183	4	Removal of AWWD Temporary Gravel Trench Patch	SY	\$10.50	200.00	\$2,100.00
184	4	Sawcutting	LF	\$6.00	880.00	\$5,280.00
		Group 4 subtotal:				\$111,775.00
		10.5% Group 4 tax:				\$11,736.38
		Group 4 total:				\$123,511.38
TOTAL						\$123,511.38

August 31, 2023 - 1:28 PM - BRIANG - I:\WD\MANFILES\CAD-GISE\ENGINEERING CAD\CAPITAL PROJECTS\W0602 SNOCO 35TH\35TH AVE PLANS\AW01-AW14.DWG - Layout Name: AW10

SECTION 3, T. 27 N, R. 4 E., W.M.



CO 1: Triple Conduit
here instead of single

UTILITY NOTES

- 1 RELOCATE/REPLACE EXISTING HYDRANT ASSEMBLY PER WD-9. SALVAGE EXISTING HYDRANT TO AWWD AT AWWD'S REQUEST OR DISPOSE OF OFFSITE.
- 2 SERVICE CONNECTION, 1-INCH. INSTALL WATER SERVICE AND METER BOX PER AWWD STD DWG WD-2, WD-4 AND WD-4A. METER BOX LOCATION IS APPROXIMATE. COORDINATE WITH AWWD TO TRANSFER EXISTING METER AND REMOTE READ EQUIPMENT. RECONNECT PRIVATE SERVICE.
- 3 ADJUST MANHOLE. AWWD TO PROVIDE ADA-COMPLIANT MANHOLE FRAME & COVER PER SP 7-05.3, WHERE REQUIRED
- 4 FINAL VALVE BOX ADJUSTMENT. INTERMEDIATE VALVE BOX ADJUSTMENT WHERE REQUIRED
- 5 CAP AND SEAL AWWD CONDUIT INSIDE JUNCTION/PULL BOX
- 6 HYDRANT ASSEMBLY. INSTALL PER AWWD STD DWG WD-7
- 7 AWWD CONDUIT PULL BOX. INSTALL PER DETAIL ON SHEET AW14
- 8 AWWD CONDUIT JUNCTION BOX. INSTALL PER DETAIL ON SHEET AW14
- 9 REMOVE EXISTING WATER SERVICE
- 10 MAJOR SANITARY SEWER MANHOLE ADJUST
- 11 DROP MANHOLE MODIFICATIONS PER 7-05.3 SP, APPENDIX C, AND DETAIL 7 ON AW14
- 12 REMOVE EXISTING HYDRANT ASSEMBLY AND CAP AT WATER MAIN
- 13 SERVICE CONNECTION, 2-INCH. INSTALL WATER SERVICE AND METER BOX PER AWWD STD DWG WD-2 AND WD-5. METER BOX LOCATION IS APPROXIMATE. COORDINATE WITH AWWD TO TRANSFER EXISTING METER AND REMOTE READ EQUIPMENT. RECONNECT PRIVATE SERVICE.
- 14 REMOVE EXISTING WATER MAIN AND CAP BOTH SIDES

GENERAL NOTES

- 1 EXISTING 24-INCH GATE VALVE WITH BYPASS.
- 2 TRENCH RESTORATION PER EDDS 8-030
- 3 SWING 45-DEG BENDS TO PROVIDE MINIMUM 12 INCHES OF VERTICAL SEPARATION BETWEEN NEW WATER MAIN AND EXISTING OR PROPOSED UTILITIES. CONTRACTOR TO CONFIRM VERTICAL ELEVATIONS IN FIELD.
- 4 INSTALL NEW WATER MAIN ABOVE PROPOSED STORM DRAIN.
- 5 INSTALL NEW WATER MAIN BELOW PROPOSED STORM DRAIN.
- 6 EXISTING WATER MAIN IN 18-INCH CASING.
- 7 INSTALL SINGLE CONDUIT DUCT BANK BETWEEN JUNCTION BOXES AND PULL BOXES.
- 8 INSTALL TRIPLE CONDUIT DUCT BANK BETWEEN JUNCTION BOXES. UNLESS SHOWN OTHERWISE.

RECEIVED

06/13/2024

SNOHOMISH CO
CONSTRUCTION

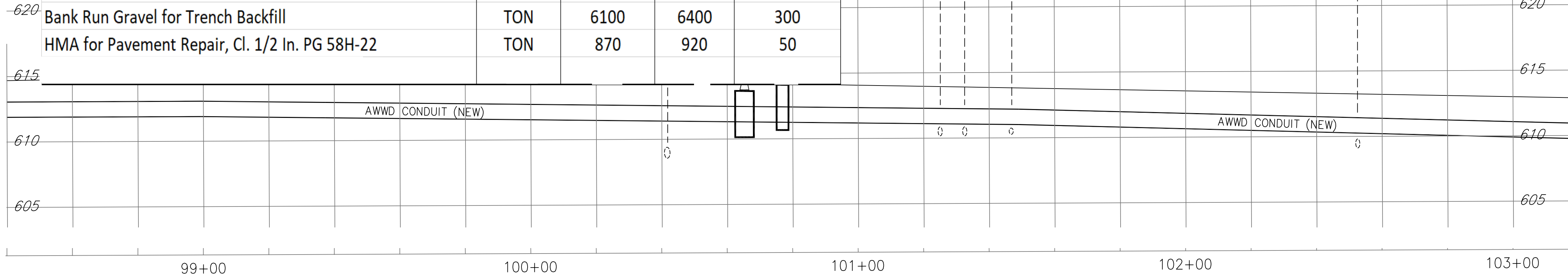


HORIZONTAL



W0602

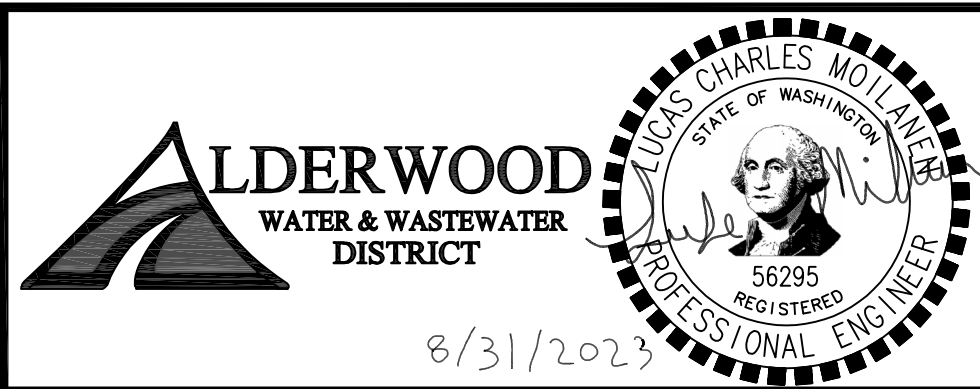
RCO #1				
	Unit	Original QTY	New QTY	Delta
AWWD Single Conduit Duct Bank	LF	610	270	-340
AWWD Triple Conduit Duct Bank	LF	2000	2770	770
AWWD Conduit Pull Box	EACH	3	3	0
AWWD Conduit Junction Box	EACH	6	7	1
Bank Run Gravel for Trench Backfill	TON	6100	6400	300
HMA for Pavement Repair, Cl. 1/2 In. PG 58H-22	TON	870	920	50



DATE	NO.	REVISION	BY
		Change Order #5 12/9/2024 Page 3 of 6	



UPI NO.: 06-0014	FED. AID PROJ. NO.:
SURVEY NO.: 005-08	FIELD BOOK(S):
HORZ. DATUM: NAD 83	VERT. DATUM: NAVD88
DESIGNED BY: LM	DRAWN BY: BG



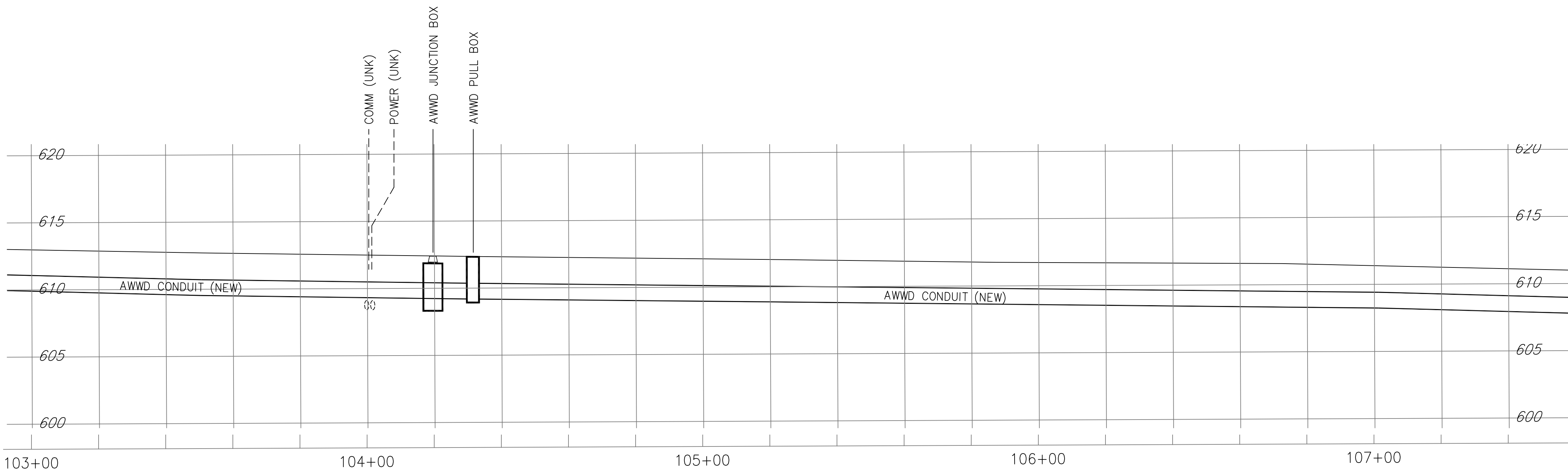
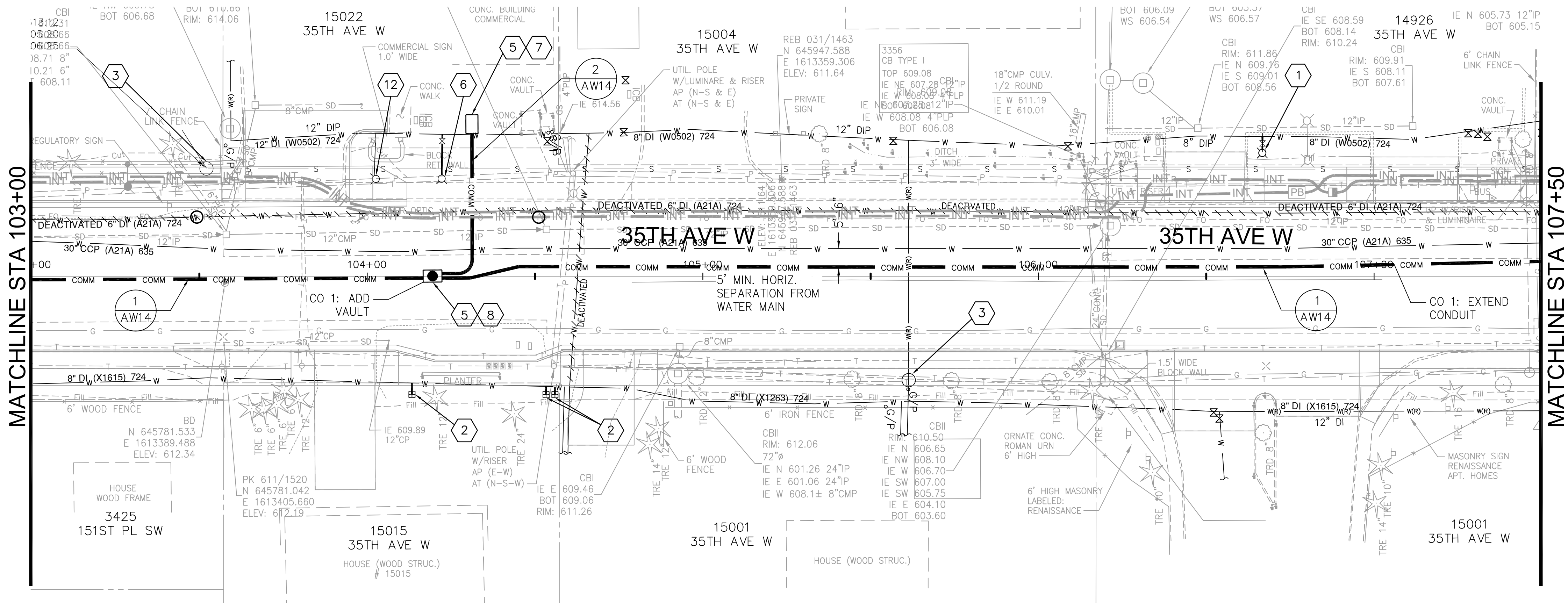
REVIEWED AND APPROVED FOR CONSTRUCTION
DOUGLAS W. McCORMICK, P.E. SNOHOMISH COUNTY ENGINEER
DATE APPROVED:

SNOHOMISH COUNTY DEPARTMENT OF PUBLIC WORKS
FUNDING NO. RC1491

36TH AVE W & 35TH AVE W 164TH ST. SW TO 148TH ST. SW STA 98+50 TO 103+00 UTILITY INFORMATION PLAN	REFERENCE SHEET NO. AW10 SHEET 10 OF 14 SHEETS
--	---

September 19, 2024 - 1:20 PM - BRIANG - \\AWD\WANFILES\CAD-GISE\ENGINEERING CAD\CAPITAL PROJECTS\W0602 SNOCO 35TH\35TH AVE PLANS\AW01-AW14.DWG - Layout Name: AW11

SECTION 3, T. 27 N, R. 4 E., W.M.

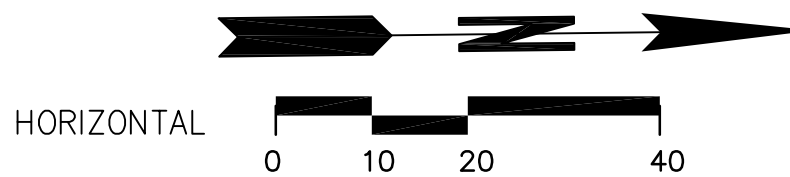


UTILITY NOTES

- 1 RELOCATE/REPLACE EXISTING HYDRANT ASSEMBLY PER WD-9. SALVAGE EXISTING HYDRANT TO AWWD AT AWWD'S REQUEST OR DISPOSE OF OFFSITE.
- 2 SERVICE CONNECTION, 1-INCH. INSTALL WATER SERVICE AND METER BOX PER AWWD STD DWG WD-2, WD-4 AND WD-4A. METER BOX LOCATION IS APPROXIMATE. COORDINATE WITH AWWD TO TRANSFER EXISTING METER AND REMOTE READ EQUIPMENT. RECONNECT PRIVATE SERVICE.
- 3 ADJUST MANHOLE. AWWD TO PROVIDE ADA-COMPLIANT MANHOLE FRAME & COVER PER SP 7-05.3, WHERE REQUIRED
- 4 FINAL VALVE BOX ADJUSTMENT. INTERMEDIATE VALVE BOX ADJUSTMENT WHERE REQUIRED
- 5 CAP AND SEAL AWWD CONDUIT INSIDE JUNCTION/PULL BOX
- 6 HYDRANT ASSEMBLY. INSTALL PER AWWD STD DWG WD-7
- 7 AWWD CONDUIT PULL BOX. INSTALL PER DETAIL ON SHEET AW14
- 8 AWWD CONDUIT JUNCTION BOX. INSTALL PER DETAIL ON SHEET AW14
- 9 REMOVE EXISTING WATER SERVICE
- 10 MAJOR SANITARY SEWER MANHOLE ADJUST
- 11 DROP MANHOLE MODIFICATIONS PER 7-05.3 SP, APPENDIX C, AND DETAIL 7 ON AW14
- 12 REMOVE EXISTING HYDRANT ASSEMBLY AND CAP AT WATER MAIN
- 13 SERVICE CONNECTION, 2-INCH. INSTALL WATER SERVICE AND METER BOX PER AWWD STD DWG WD-2 AND WD-5. METER BOX LOCATION IS APPROXIMATE. COORDINATE WITH AWWD TO TRANSFER EXISTING METER AND REMOTE READ EQUIPMENT. RECONNECT PRIVATE SERVICE.
- 14 REMOVE EXISTING WATER MAIN AND CAP BOTH SIDES

GENERAL NOTES

- 1 EXISTING 24-INCH GATE VALVE WITH BYPASS.
- 2 TRENCH RESTORATION PER EDDS 8-030
- 3 SWING 45-DEG BENDS TO PROVIDE MINIMUM 12 INCHES OF VERTICAL SEPARATION BETWEEN NEW WATER MAIN AND EXISTING OR PROPOSED UTILITIES. CONTRACTOR TO CONFIRM VERTICAL ELEVATIONS IN FIELD.
- 4 INSTALL NEW WATER MAIN ABOVE PROPOSED STORM DRAIN.
- 5 INSTALL NEW WATER MAIN BELOW PROPOSED STORM DRAIN.
- 6 EXISTING WATER MAIN IN 18-INCH CASING.
- 7 INSTALL SINGLE CONDUIT DUCT BANK BETWEEN JUNCTION BOXES AND PULL BOXES.
- 8 INSTALL TRIPLE CONDUIT DUCT BANK BETWEEN JUNCTION BOXES. UNLESS SHOWN OTHERWISE.

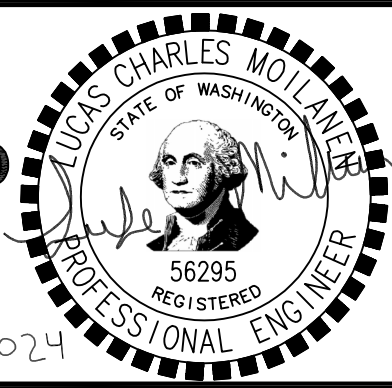
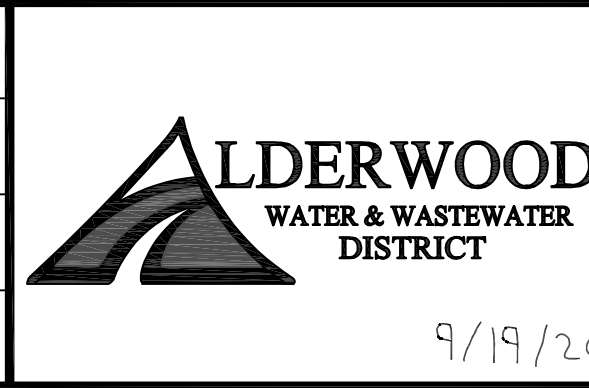


W0602

8/9/24	TRIPLE CONDUIT / MODIFY INJECTION VAULT	BJG	LCM
9/19/24	WATER / COMM CONDUIT REALIGNMENT	BJG	LCM
Change Order #5 12/9/2024 Page 4 of 6			
DATE	NO.	REVISION	BY



UPI NO.: 06-0014	FED. AID PROJ. NO.:
SURVEY NO.: 005-08	FIELD BOOK(S):
HORZ. DATUM: NAD 83	VERT. DATUM: NAVD88
DESIGNED BY: LM	DRAWN BY: BG



REVIEWED AND APPROVED FOR CONSTRUCTION
DOUGLAS W. McCORMICK, P.E. SNOHOMISH COUNTY ENGINEER
DATE APPROVED:

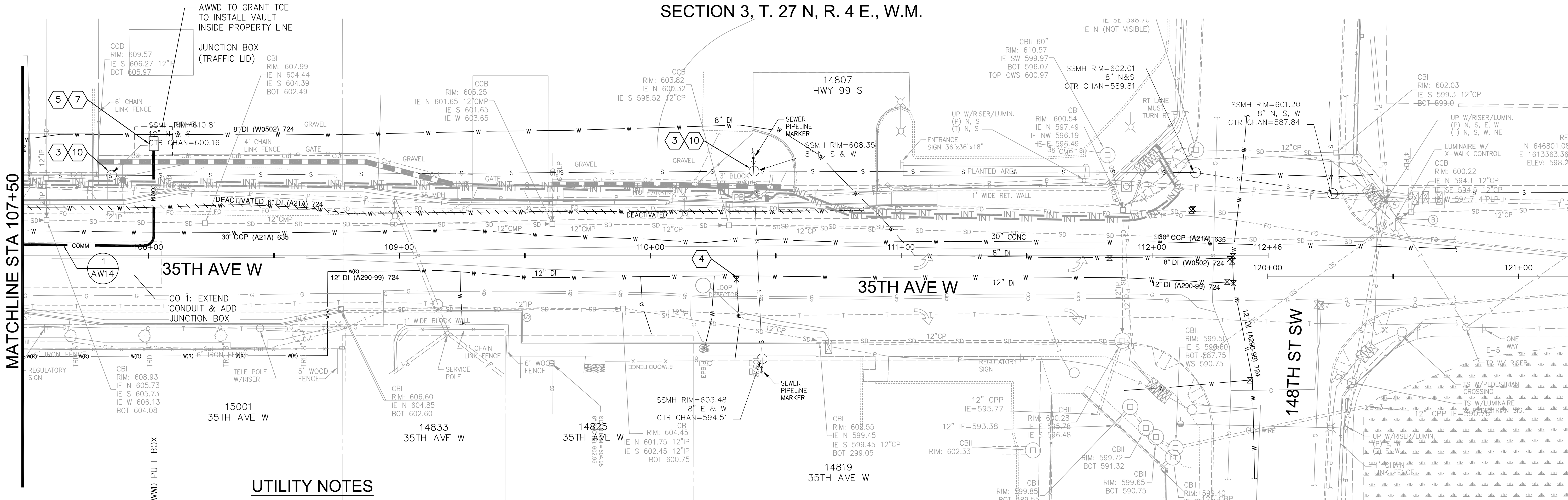


36TH AVE W & 35TH AVE W 164TH ST. SW TO 148TH ST. SW STA 103+00 TO 107+50 UTILITY INFORMATION PLAN

REFERENCE SHEET NO. AW11
SHEET 11 OF 14 SHEETS

September 19, 2024 - 1:20 PM - BRIANG - \\AWD-WANFILES\CAD-GISE\ENGINEERING CAD\CAPITAL PROJECTS\35TH AVE PLANS\AW01-AW14.DWG - Layout Name: AW12

SECTION 3, T. 27 N, R. 4 E., W.M.



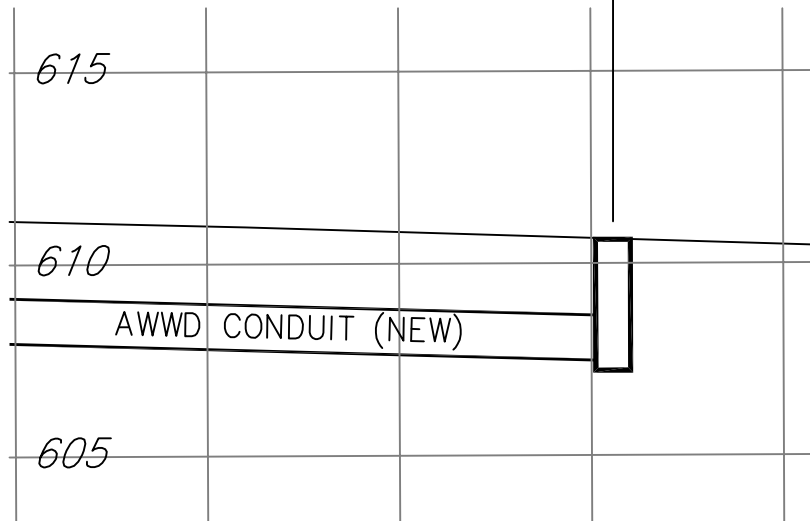
UTILITY NOTES

- RELOCATE/REPLACE EXISTING HYDRANT ASSEMBLY PER WD-9. SALVAGE EXISTING HYDRANT TO AWWD AT AWWD'S REQUEST OR DISPOSE OF OFFSITE.
- SERVICE CONNECTION, 1-INCH. INSTALL WATER SERVICE AND METER BOX PER AWWD STD DWG WD-2, WD-4 AND WD-4A. METER BOX LOCATION IS APPROXIMATE. COORDINATE WITH AWWD TO TRANSFER EXISTING METER AND REMOTE READ EQUIPMENT. RECONNECT PRIVATE SERVICE.
- ADJUST MANHOLE. AWWD TO PROVIDE ADA-COMPLIANT MANHOLE FRAME & COVER PER SP 7-05.3, WHERE REQUIRED
- FINAL VALVE BOX ADJUSTMENT. INTERMEDIATE VALVE BOX ADJUSTMENT WHERE REQUIRED
- CAP AND SEAL AWWD CONDUIT INSIDE JUNCTION/PULL BOX
- HYDRANT ASSEMBLY. INSTALL PER AWWD STD DWG WD-7
- AWWD CONDUIT PULL BOX. INSTALL PER DETAIL ON SHEET AW14
- AWWD CONDUIT JUNCTION BOX. INSTALL PER DETAIL ON SHEET AW14
- REMOVE EXISTING WATER SERVICE
- MAJOR SANITARY SEWER MANHOLE ADJUST
- DROP MANHOLE MODIFICATIONS PER 7-05.3 SP, APPENDIX C, AND DETAIL 7 ON AW14
- REMOVE EXISTING HYDRANT ASSEMBLY AND CAP AT WATER MAIN

- SERVICE CONNECTION, 2-INCH. INSTALL WATER SERVICE AND METER BOX PER AWWD STD DWG WD-2 AND WD-5. METER BOX LOCATION IS APPROXIMATE. COORDINATE WITH AWWD TO TRANSFER EXISTING METER AND REMOTE READ EQUIPMENT. RECONNECT PRIVATE SERVICE.
- REMOVE EXISTING WATER MAIN AND CAP BOTH SIDES

GENERAL NOTES

- EXISTING 24-INCH GATE VALVE WITH BYPASS.
- TRENCH RESTORATION PER EDDS 8-030
- SWING 45-DEG BENDS TO PROVIDE MINIMUM 12 INCHES OF VERTICAL SEPARATION BETWEEN NEW WATER MAIN AND EXISTING OR PROPOSED UTILITIES. CONTRACTOR TO CONFIRM VERTICAL ELEVATIONS IN FIELD.
- INSTALL NEW WATER MAIN ABOVE PROPOSED STORM DRAIN.
- INSTALL NEW WATER MAIN BELOW PROPOSED STORM DRAIN.
- EXISTING WATER MAIN IN 18-INCH CASING.
- INSTALL SINGLE CONDUIT DUCT BANK BETWEEN JUNCTION BOXES AND PULL BOXES.
- INSTALL TRIPLE CONDUIT DUCT BANK BETWEEN JUNCTION BOXES. UNLESS SHOWN OTHERWISE.

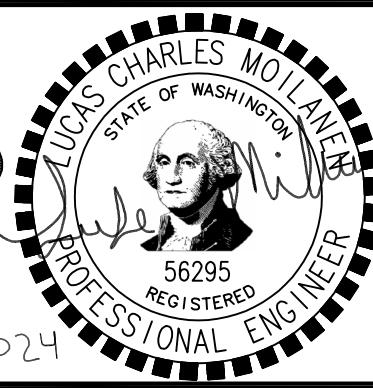
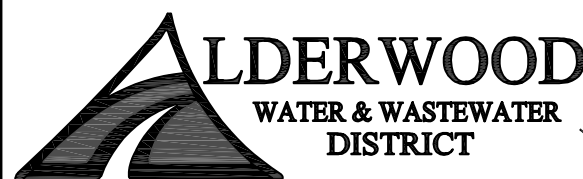


W0602

8/9/24	1	TRIPLE CONDUIT / MODIFY INJECTION VAULT	BJG	LCM
9/19/24	2	WATER / COMM CONDUIT REALIGNMENT	BJG	LCM
Change Order #5 12/9/2024 Page 5 of 6				
DATE	NO.	REVISION	BY	



UPI NO.: 06-0014	FED. AID PROJ. NO.:
SURVEY NO.: 005-08	FIELD BOOK(S):
HORZ. DATUM: NAD 83	VERT. DATUM: NAVD88
DESIGNED BY: LM	DRAWN BY: BG



REVIEWED AND APPROVED
FOR CONSTRUCTION

DOUGLAS W. McCORMICK, P.E.
SNOHOMISH COUNTY ENGINEER

DATE APPROVED:

SNOHOMISH COUNTY
DEPARTMENT OF
PUBLIC WORKS



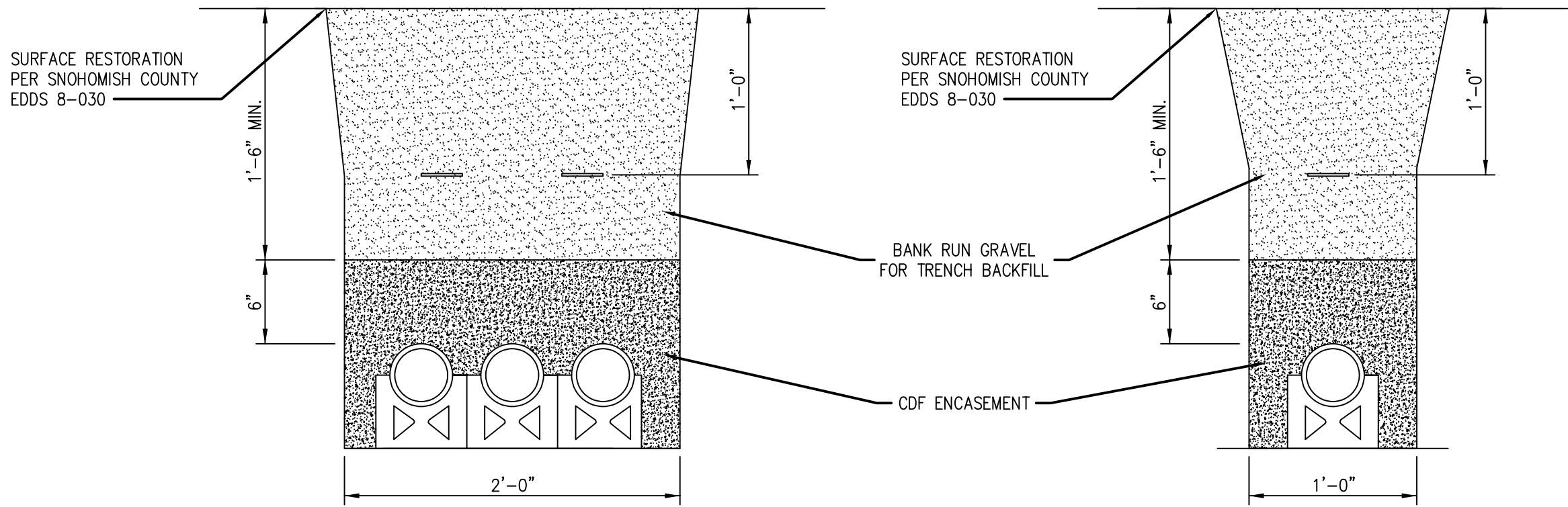
FUNDING NO. RC1491

36TH AVE W & 35TH AVE W
164TH ST. SW TO 148TH ST. SW
STA 107+50 TO 113+50
UTILITY INFORMATION PLAN

REFERENCE SHEET NO. AW12
SHEET 12 OF 14 SHEETS

August 31, 2023 - 1:30 PM - BRIANG - \\AWD-MANFILES\CAD-GISE\ENGINEERING CAD\CAPITAL PROJECTS\W0602 SNOCO 35TH\35TH AVE PLANS\AW01-AW14.DWG - Layout Name: AW14

SECTION 3, T. 27 N, R. 4 E., W.M.



NOTES:

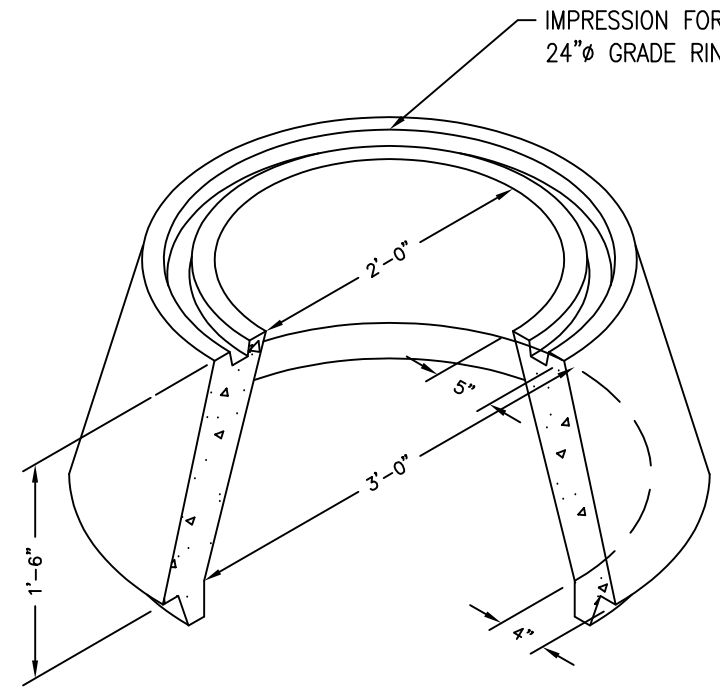
- CONTRACTOR SHALL LEAVE 1/2" PULL TAPE IN EACH CONDUIT PER SECTION 7-20.3 SP.
- INSTALL DUCT SPACERS AT A MINIMUM EVERY 20 LF OF TRENCH.
- INSTALL DETECTABLE MARKING TAPE ABOVE CDF.

1 TRIPLE CONDUIT DUCT BANK
AW14 N.T.S.

NOTES:

- CONTRACTOR SHALL LEAVE 1/2" PULL TAPE IN EACH CONDUIT PER SECTION 7-20.3 SP.
- INSTALL DUCT SPACERS AT A MINIMUM EVERY 20 LF OF TRENCH.
- INSTALL DETECTABLE MARKING TAPE ABOVE CDF.

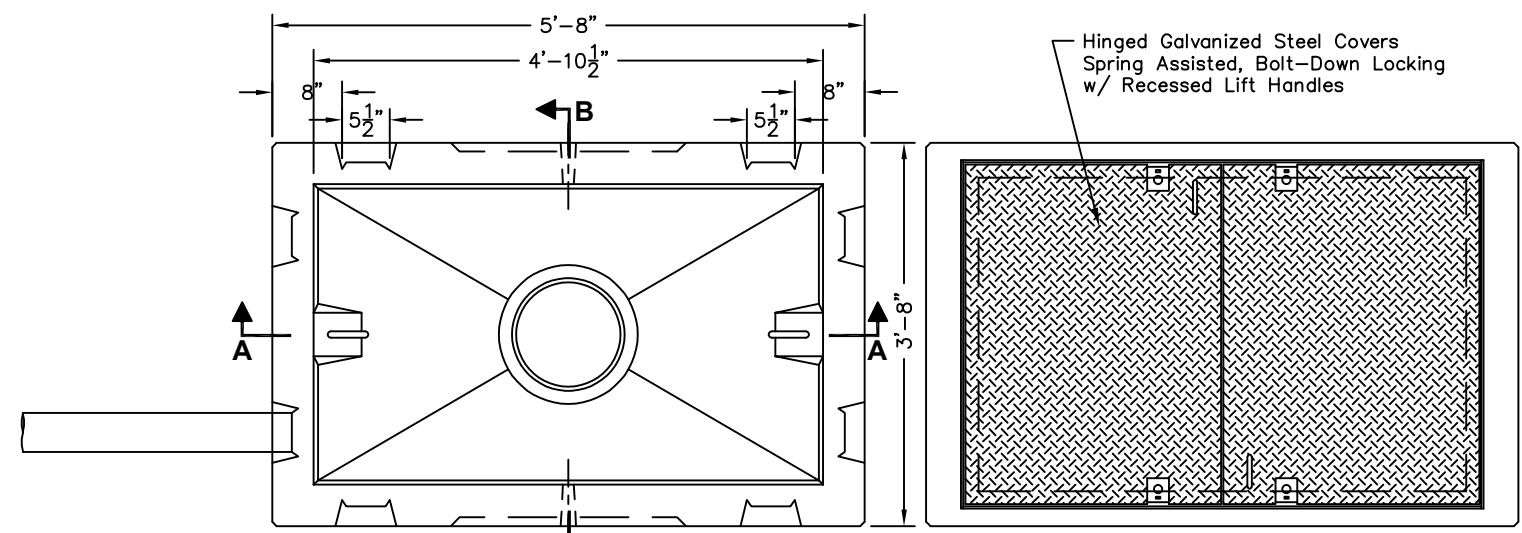
2 SINGLE CONDUIT DUCT BANK
AW14 N.T.S.



NOTES:

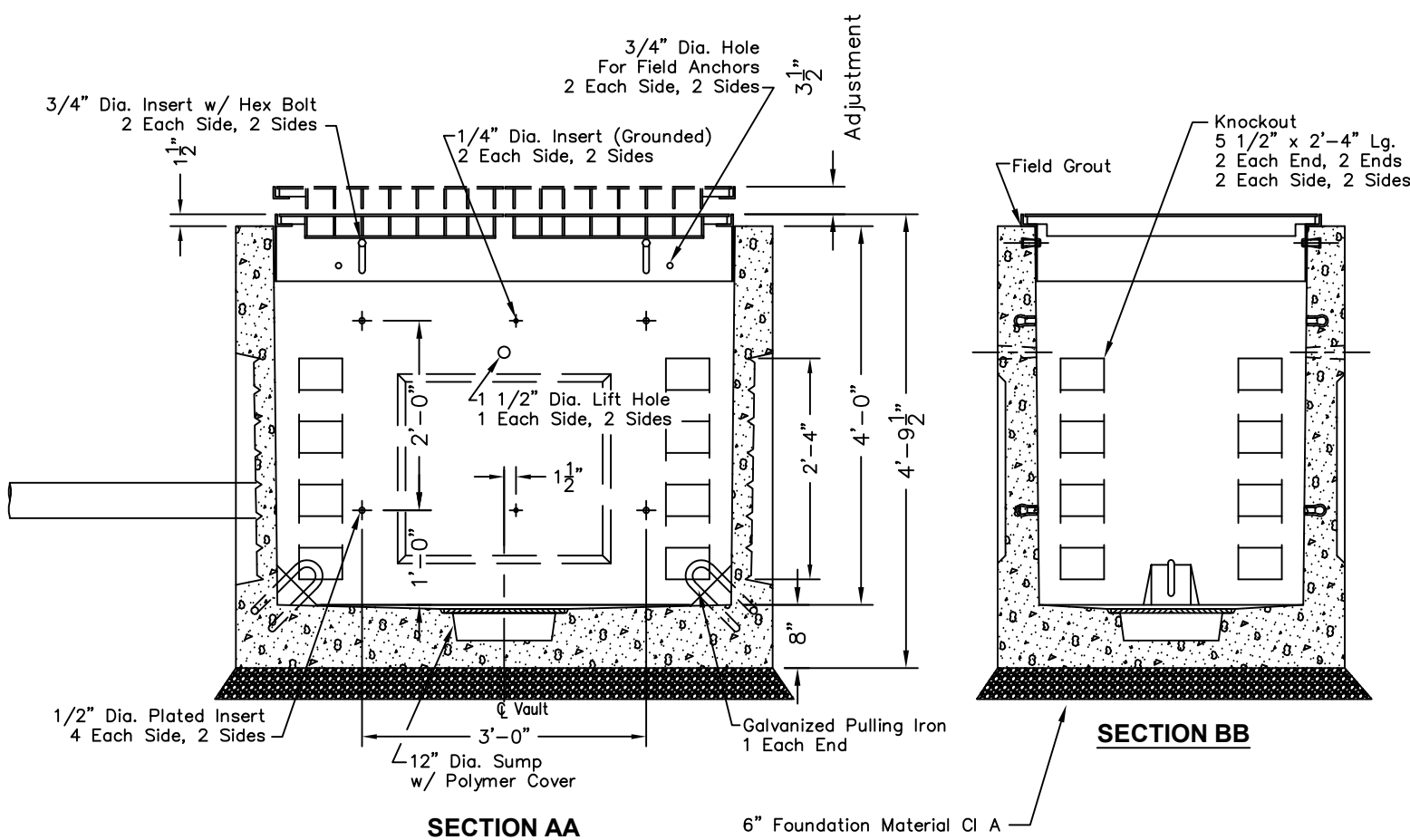
- 36" Ø TO 24" Ø CONCENTRIC CONE WEIGHT: 740 LBS.
- INSTALL CAST IRON LID PER AWWD STANDARD DETAILS S-5 AND TBR-6

6 36" Ø CONCENTRIC CONE
AW14 N.T.S.



PLAN VIEW
Frontier-35 Pull Box or Equivalent
Access Cover Not Shown, See Cover Plan

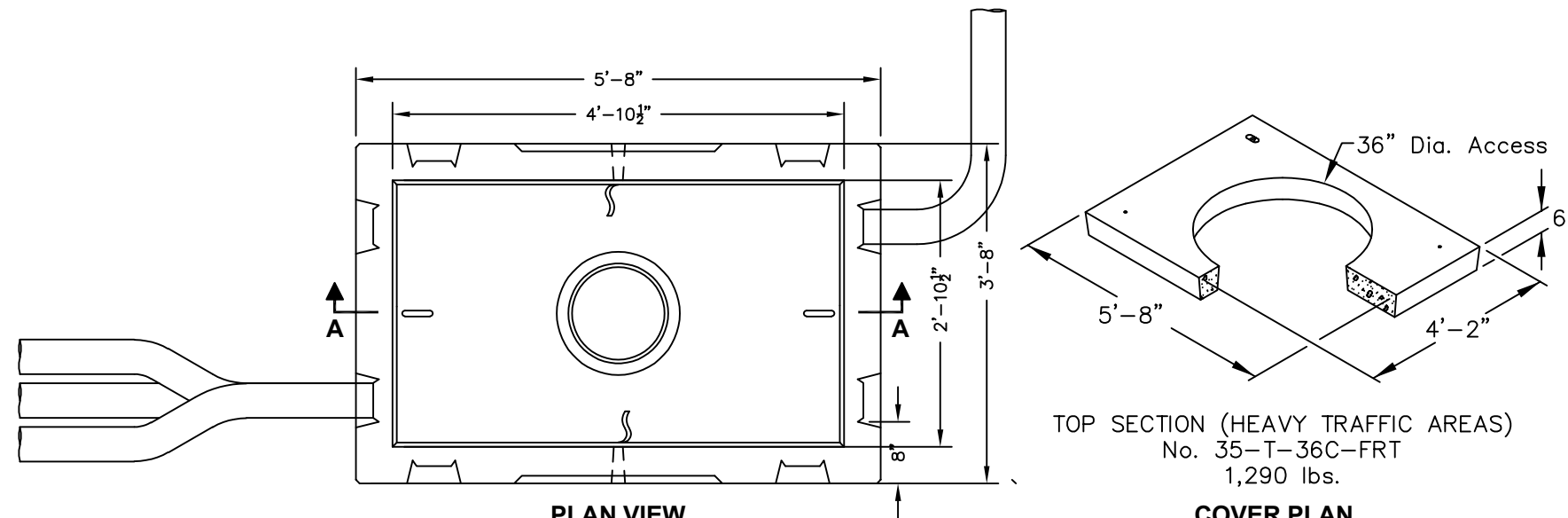
COVER PLAN



SECTION AA

SECTION BB

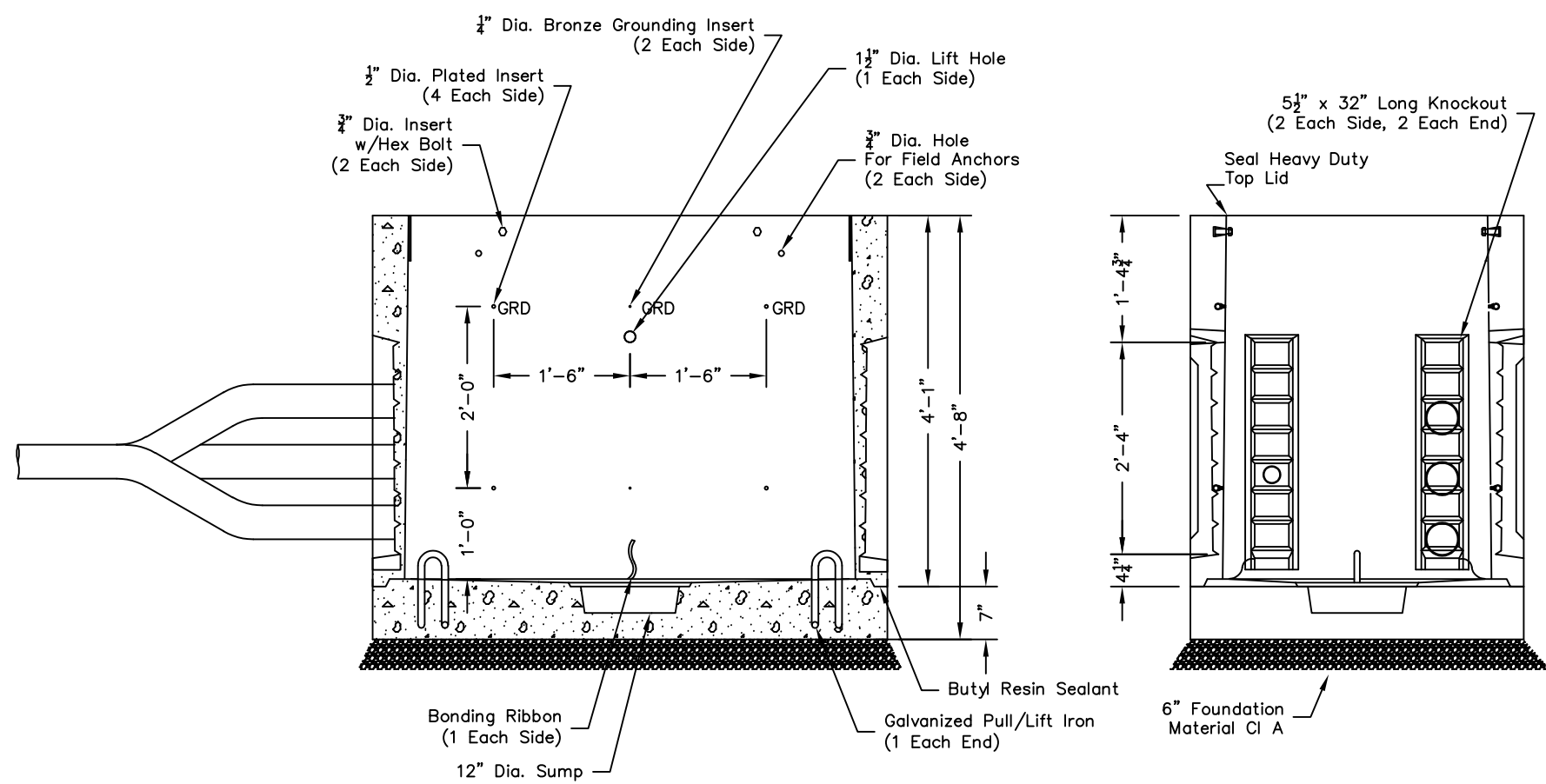
4 CONDUIT PULL BOX
AW14 N.T.S.



PLAN VIEW
Frontier 3x5 Intercept Box or Equivalent
Access Door Not Shown, See Cover Plan

TOP SECTION (HEAVY TRAFFIC AREAS)
No. 35-T-36C-FRT
1,290 lbs.

COVER PLAN
Install Concentric Cone and AWWD
Manhole Frame and Cover Assembly



SECTION AA

END VIEW

5 CONDUIT JUNCTION BOX
AW14 N.T.S.

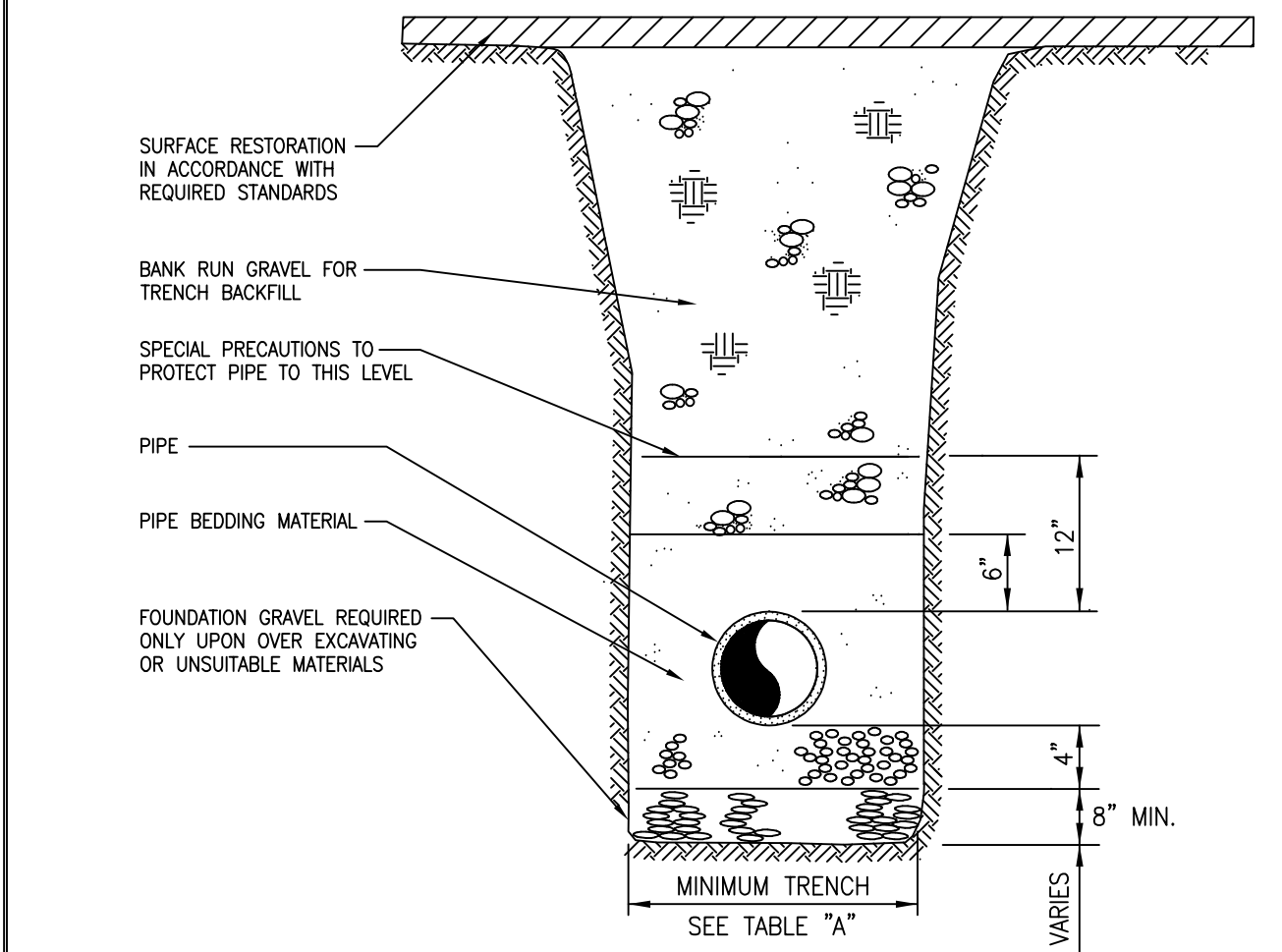


TABLE "A"

6" PIPE	-2'-6"
8" PIPE	-2'-6"
10" PIPE	-3'-0"
12" PIPE	-3'-0"
16" PIPE	-3'-6"
18" PIPE	-4'-0"
24" PIPE	-4'-0"

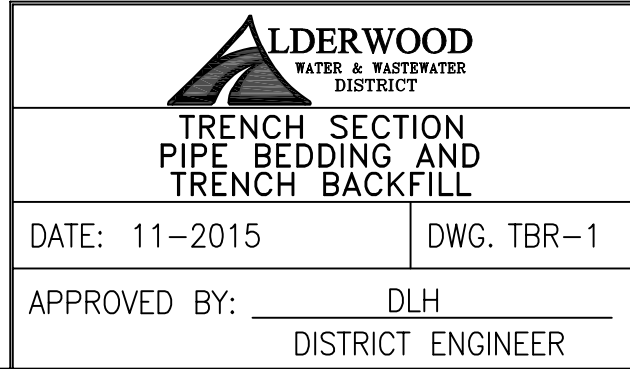
TRENCH BOTTOM DETAIL

PIPE BEDDING	6" MIN
PIPE BEDDING	4'-6"

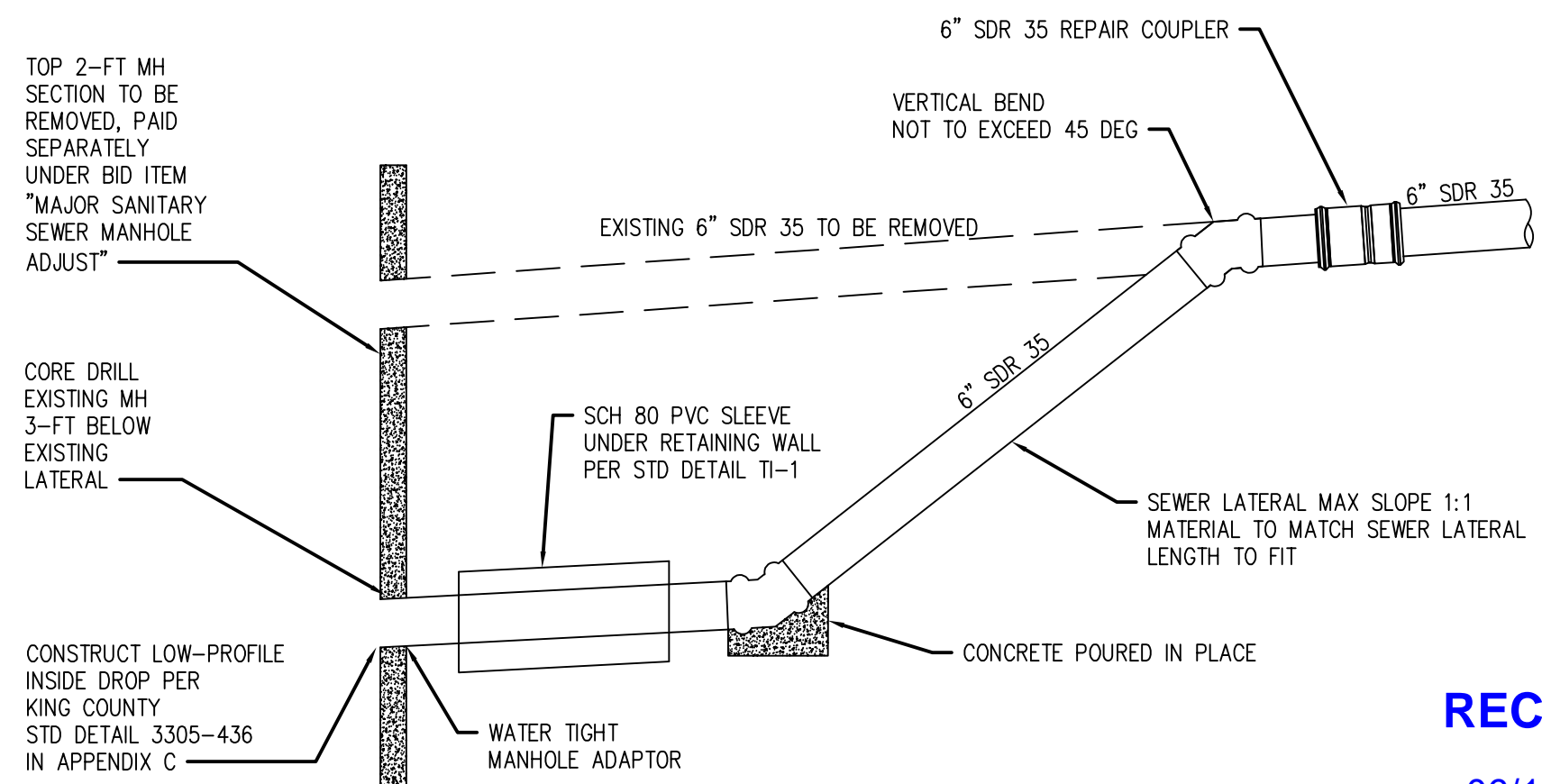
KEEP TRENCH BOTTOM COMPACTED WITH
UNIFORM GRADE. NO TEMPORARY SUPPORTS
I.E. BLOCKS, ALLOWED TO SUPPORT PIPE.
TRENCH BOTTOM SHALL BE TO GRADE PRIOR
TO PIPE INSTALLATION.

NOTES:

- REFERENCE DIVISION 7
- SURFACE RESTORATION IN ACCORDANCE WITH LOCAL JURISDICTIONAL REQUIREMENTS
- MAX. TRENCH WIDTH IS 2'-0" GREATER THAN MINIMUM SHOWN IN TABLE "A"



3 TRENCH SECTION
AW14 N.T.S.



7 DROP MANHOLE MODIFICATIONS
AW14 N.T.S.

RECEIVED

06/13/2024

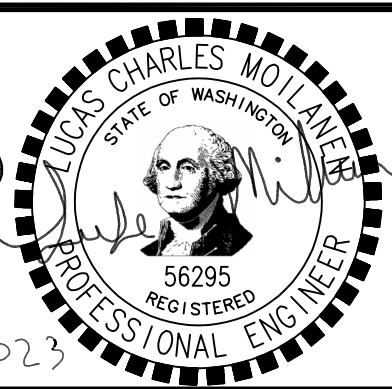
SNOHOMISH CO
CONSTRUCTION

W0602

DATE	NO.	REVISION	BY
		Change Order #5 12/9/2024 Page 6 of 6	



UPI NO.: 06-0014	FED. AID PROJ. NO.:
SURVEY NO.: 005-08	FIELD BOOK(S):
HORZ. DATUM: NAD 83	VERT. DATUM: NAVD88
DESIGNED BY: LM	DRAWN BY: BG



REVIEWED AND APPROVED
FOR CONSTRUCTION

DOUGLAS W. MCCORMICK, P.E.
SNOHOMISH COUNTY ENGINEER

DATE APPROVED:

SNOHOMISH COUNTY
DEPARTMENT OF
PUBLIC WORKS



FUNDING NO. RC1491

36TH AVE W & 35TH AVE W
164TH ST. SW TO 148TH ST. SW
DETAILS

REFERENCE SHEET NO. AW14
SHEET 14 OF 14 SHEETS