

Snohomish County Council



Jonathan Robinson

January 10th, 2023

WSU Snohomish County Extension
Beach Watcher Program Coordinator

What are the Beach Watchers?

- Volunteer organization dedicated to protecting the Salish Sea through education, science and stewardship

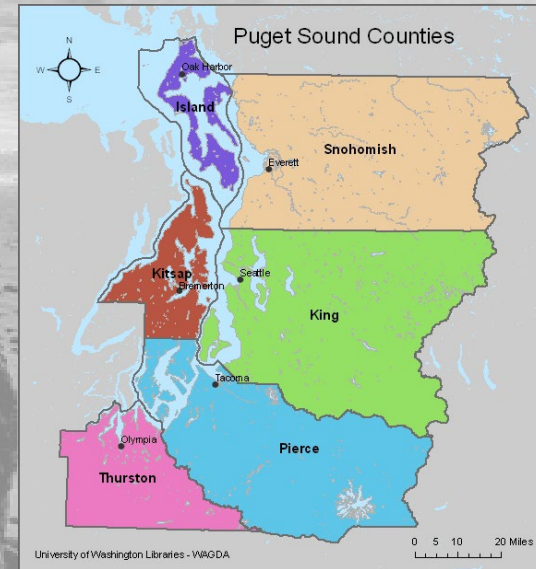


Snohomish County

WASHINGTON STATE UNIVERSITY
EXTENSION

What are the Beach Watchers?

- Volunteer organization dedicated to protecting the Salish Sea through education, science and stewardship
- History
 - 2005 EPA grant, 8 Puget Sound counties

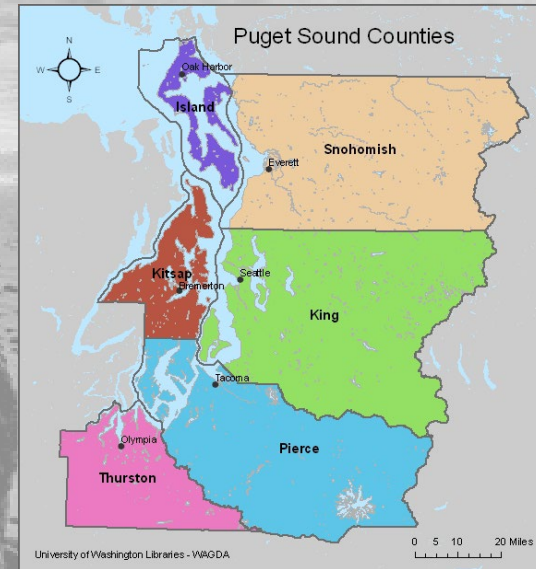


Snohomish County

WASHINGTON STATE UNIVERSITY
EXTENSION

What are the Beach Watchers?

- Volunteer organization dedicated to protecting the Salish Sea through education, science and stewardship
- History
 - 2005 EPA grant, 8 Puget Sound counties
 - 2018 Snohomish county remaining program



Snohomish County

WASHINGTON STATE UNIVERSITY
EXTENSION

Who are the Beach Watchers?

- 100 Active Volunteers
- Demographics
- Incredibly Passionate
- Some have volunteered 5,000 hours



How to become a Beach Watcher?

- Annual Training
 - 80 hour, university level course
 - Invited expert speakers
 - Field Trips
- Payback 80 hours
- Trains you to volunteer for any of our programs



Beach Naturalist Course

- Annual Training
 - Shorter 16 hour, university level course
 - Focused on Marine Biology
 - Invited expert speakers
 - Field Trip to beach
- Volunteer for just Beach Naturalist events
- Payback 16 hours



What do Beach Watchers do?

- **Education, Science and Stewardship Programs**

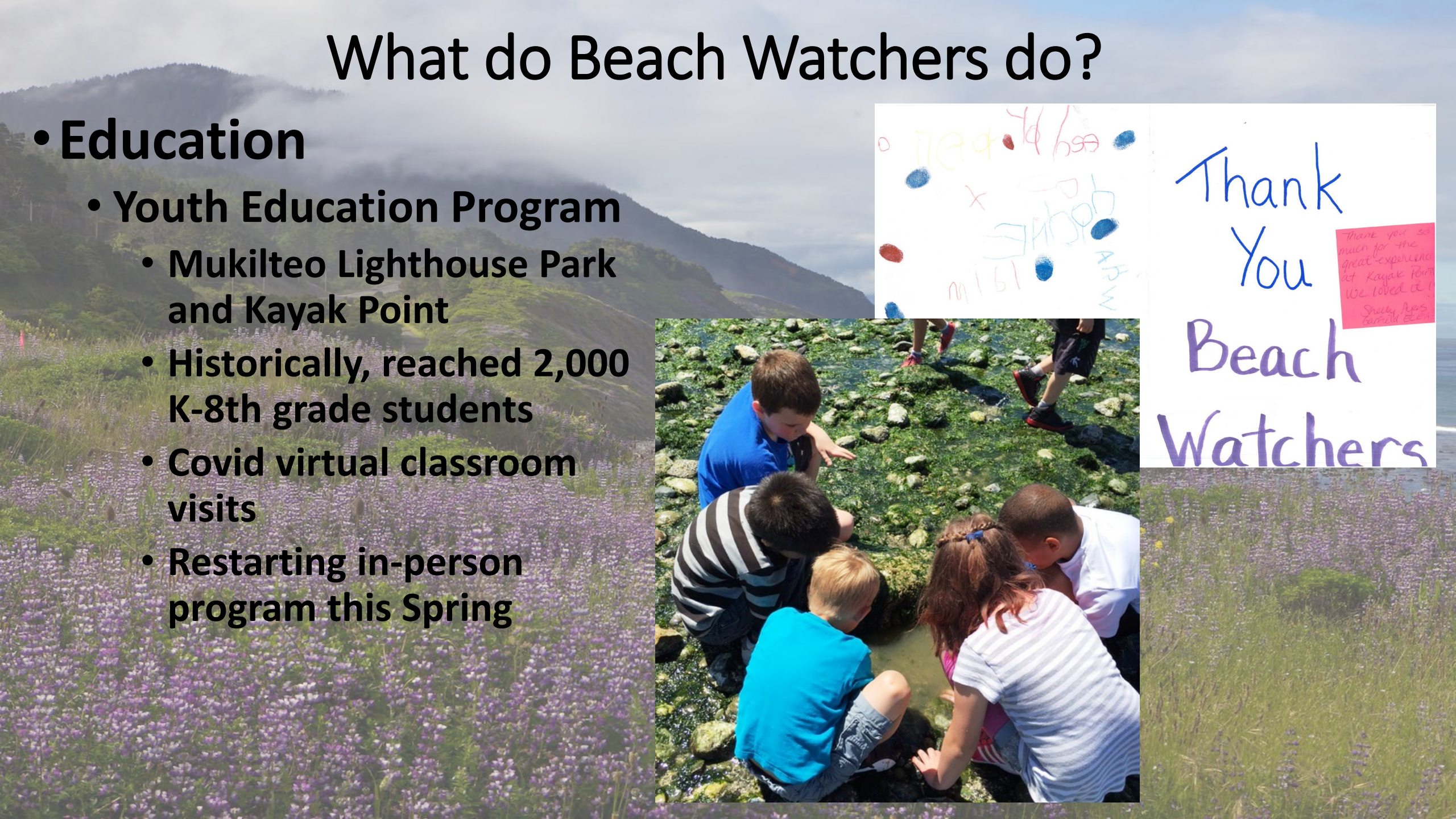


What do Beach Watchers do?

- **Education**

- **Youth Education Program**

- Mukilteo Lighthouse Park and Kayak Point
- Historically, reached 2,000 K-8th grade students
- Covid virtual classroom visits
- Restarting in-person program this Spring



What do Beach Watchers do?

- **Education cont.**
 - Youth Education Program
 - Naturalists Programs
 - Edmonds
 - Mukilteo Lighthouse Park
 - Kayak Point
 - Over 9,000 direct conversation on the beach with public on Salish Sea literacy



What do Beach Watchers do?

- **Education cont.**
 - Youth Education Program
 - Naturalists Programs
 - Edmonds
 - Mukilteo Lighthouse Park
 - Kayak Point
 - **Pet Waste Program**
 - 170,000 dogs
 - 64 tons of poop a day
 - 2,400 dog owners instructed on pet waste handling



What do Beach Watchers do?

- **Science**
 - **BEACH Water Quality Program**
 - Memorial Day to Labor Day
 - 5 beaches sampled weekly
 - Marina Beach Park, Brackets Landing, Picnic Point, Howarth Park and Jetty Island
 - Bacteria counts to see if beach is safe for swimming
 - Warnings and closures



What do Beach Watchers do?

- **Citizen Science**

- **BEACH Water Quality Program**

- **Intertidal Monitoring and Characterization**

- **Survey 5 beaches annually**

- Olympic Beach, Picnic Point, Howarth Park, Mukilteo Lighthouse Park and Kayak Point

- **Measure biota (inverts and algae), beach profile, animals in sediment**

- **Data is uploaded to UW website**

- www.shorelinemonitoring.org

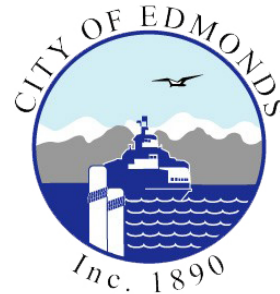


What do Beach Watchers do?

- **Stewardship**
 - **Beach Clean-ups and ETAP**
 - Monthly beach clean-ups
 - Picnic Point and Howarth Park
 - Quarterly beach clean-ups
 - Collaborate with MRC
 - **Yearly ETAP event**
 - Collaborate with MRC, WSU Sustainable Community Stewards and Zero Waste WA



Funders and Partners



Questions?



Snohomish County

WASHINGTON STATE UNIVERSITY
EXTENSION

Jonathan Robinson

jonathan.w.robinson@wsu.edu

<https://extension.wsu.edu/snohomish/beach-watchers/>