



Memorandum

Date: April 24, 2026

To: Council Chair Dunn
Council Vice-Chair Low
Councilmember Mead
Councilmember Nehring
Councilmember Peterson

CC: Dave Somers, County Executive
Kent Patton, Deputy Executive
Tom Teigen, Executive Director

From: Gregg Farris, P.E., Surface Water Utility Director *GF*

Subject: SWM 2025 Year-End Reporting by Council District

Surface Water Management (SWM) is pleased to provide SWM's year-end reporting of its 2025 revenues and expenditures by council district, per SCC 25.05.045(1).

Summary

In 2025, SWM collected \$31.9 million in service charges, including \$25 million in direct charges and \$6.9 million in in-kind services provided by Snohomish County Public Works. Combined with other revenue sources, SWM spent \$43.6 million on services and capital projects within the service district and passed through an additional \$1.5 million in grants to partners.

Overall, SWM delivered approximately \$11.7 million more in services and capital projects than it collected in service charge revenue in 2025. SWM has achieved this every year since operations were consolidated into a single district in 2017 and this reporting requirement began.

SWM delivers more in services and capital projects than we collect in service charges by aggressively pursuing additional revenue sources and partnerships. In 2025, SWM secured \$7.6 million in grant funding for programs delivered in the county, including \$140,000 from the EPA's Community Project Funding Program and \$1.5M to support partners.

To make each service charge dollar go further, SWM shared project costs with local cities, tribes, and regional organizations. In addition, we used available fund balance to support select 2025 projects, and congressionally directed funding helped advance the Chinook Marsh restoration project.

Using a single consolidated district allows SWM to allocate resources and deliver projects across our entire service area based on need and readiness. In practice, this means one council district may see more projects - or a major project - in a given year, while others receive more investment in subsequent years. Over time, project delivery rotates across the county as needs and opportunities arise.

As a result, over the past five years SWM has invested at least as much in every individual council district as it has collected in service charge revenue from that district. The attached exhibits illustrate this pattern clearly.

Highlights

In 2025, SWM's Floodplain Services (FS), Capital Projects (CIP), and Property Acquisition and Construction Management (PACM) teams led five major construction projects to successful completion, and another project advanced through the first year of its two-year construction timeline. The CIP team, in partnership with Road Maintenance, constructed four other projects. Below are details on several of the larger capital projects completed or advanced in each council district.

- In Council District 1, SWM invested more than \$1 million to replace a fish-passage barrier culvert near 9225 N. Cedarvale Loop Rd. with a fish-passable structure, and to restore the rearing and refuge habitat at the Chatham Acres site on the North Fork Stillaguamish River.
- In Council District 2, SWM spent \$353k to address roadway and private-property flooding along 101st St. SE and 101st Pl. SE by constructing a new storm-drain system and restoring nearby drainage ponds. SWM also completed required levee restoration and maintenance on Smith Island to ensure the levee continues to perform as intended.
- In Council District 3, SWM completed several smaller drainage improvement projects to reduce neighborhood flooding, including replacing fish-passage barrier culverts with fish-passable culverts and addressing sedimentation issues. SWM also continued monitoring the previously completed Meadowdale Park project and managing invasive aquatic plants in Lake Serene.
- In Council District 4, SWM spent \$217k to reconstruct a failing storm-drainage system on a steep hillside along E. Lowell-Larimer Road near Snohomish. An additional \$126k was used to reconfigure an existing storm-drainage and pond system on Barker Rd., restoring functionality to one of the Tambark Creek Park water-quality facilities.
- In Council District 5, SWM reconnected the right-bank historical floodplain to the Pilchuck River to increase rearing, foraging, and in-stream habitat for Chinook salmon, steelhead, bull trout, and other salmonid species. The project also replaced the limited fish passage provided by twin culverts and a fishway with a fish-passable structure, restoring the stream system near Sexton Rd.
In addition, SWM constructed the first phase of a two-year project on Elliott Rd., raising the roadway and replacing undersized culverts with a bridge to reduce flooding and improve fish passage.
SWM also constructed an asphalt berm along a cul-de-sac near 87th Ave. SE to better contain floodwater from a nearby stream, reducing the frequency of road and property flooding.

The [2025 SWM Highlights report](#) contains additional details about specific accomplishments in 2025 for each of the four main SWM service areas: water quality, salmon and marine habitat, drainage and road flooding, and river flooding.

SWM Revenues

The services provided by SWM are primarily funded by annual SWM utility charges paid by property owners in unincorporated Snohomish County. Property owners help pay for solutions because each property contributes runoff to local ditches, streams, or groundwater, and SWM is responsible for managing many of the downstream surface water systems. The utility charges are based on the contribution of each property to downstream runoff, not the potential benefit to the property.

SWM has one of the lowest surface water utility rates in the Puget Sound region, including most cities within Snohomish County. In general, most of these jurisdictions have increased their surface water charges over time by a higher percentage than Snohomish County's rates have increased.

To stretch the use of SWM utility charges further, SWM has continually pursued other funding sources. SWM has been particularly successful in recent years in applying for and securing grants to support funding of its capital projects and programs. However, some of these grant opportunities and other funding sources that SWM has utilized are diminishing.

In addition, inflationary factors in recent years have significantly impacted the cost for SWM to deliver services. From 2021 through 2024, annual inflationary indicators, such as the Seattle area CPI-U and national construction indicators (ENR-CCI), were well above 20 percent. This means that SWM's revenues have not kept pace with the increasing costs of delivering services.

As outside funding sources are diminishing, potential annexations reduce revenue from utility service charges, and the costs of delivering services have substantially increased, SWM is faced with a situation where it will become more reliant on utility charges in the coming years and less able to continue providing services at current levels.

SWM has evaluated the impacts of these financial challenges that have already started and that are projected to continue or increase in the coming years. For 2026 through 2028, SWM's successful pursuit of grant funds to supplement our utility charge revenues will fund a large portion of SWM's capital program, which designs and constructs high priority surface water projects. This large influx of grant funds will temporarily allow SWM utility charge revenues to cover the increasing costs of delivering SWM services.

For 2029 through 2030, though, the decline of grant and other revenues, together with the increased costs to deliver services, is projected to result in a reduction in SWM's capital projects and other services.

One of the biggest impacts of reducing SWM's capital program is that the County will fall further behind in addressing a growing and significant backlog of culverts under County roads that need to be replaced. This includes hundreds of pipes that have reached a condition in which the pipe walls are failing or that act as barriers for fish to swim upstream. This also includes culverts that the County has repaired in which permits require the County to fully replace each culvert. This growing backlog of vital drainage infrastructure needs under County roads that will largely remain unaddressed currently includes the following:

- Over 200 culverts that have failing pipe walls
- Roughly 300 culverts that act as barriers for fish to swim upstream
- Roughly 16 culverts that have been repaired and must be replaced to satisfy permit conditions (current estimated cost ~\$40M)

In the coming years, SWM will also be in a position where it likely will not be able to address emerging stormwater issues and needs, such as:

- The emerging need to address the impacts to salmon from tire dust pollutants in stormwater runoff
- Any increased requirements from the County's NPDES permit

Exhibits

This package includes five exhibits illustrating SWM's 2025 expenditures and service charge revenues by council district. For these exhibits, the Road Fund in-kind payment revenues and expenditures are displayed separately. This was done because SWM does not have full control over where Public Works performs maintenance and capital projects and therefore including it would not increase transparency about where constituents' service charges were spent.

Exhibit 1: The upper table summarizes the utility charge revenues collected by SWM within each council district in 2025. The lower tables summarize SWM's expenditures in 2025 according to: (1) capital and non-capital expenditures, and (2) each of the major revenue sources that supported all expenditures.

Exhibit 2: This chart directly compares total SWM utility charge revenues and total expenditures in 2025 for each council district.

Exhibit 3: This chart directly compares average SWM utility charge revenues and average total expenditures for each council district over the past five years, 2021 to 2025.

Exhibit 4: This chart shows the total expenditures by SWM within each council district for each of the past five years (2021-2025).

Exhibit 5: This chart shows the 2026 rate comparison between Snohomish County surface water utility rates and other cities within Snohomish County.

Exhibit 6: Maps are provided for the entire county and for each individual council district that show the locations of SWM capital projects, as well as SWM non-capital services that can be tracked to specific geographic locations. While the services and projects shown in these maps are tracked to specific locations, roughly half of SWM's programs are considered countywide programs. SWM has made assumptions to allocate these expenditures across the five council districts.

Exhibit 1

2025 SWM Utility Charge Revenues

SWM Utility Service Charges	Council District 1	Council District 2	Council District 3	Council District 4	Council District 5	Subtotal (Direct Charges)	Total Includes Road Fund In-Kind of \$6,957,249
Utility Charges	\$ 5,237,746	\$ 1,980,806	\$ 4,612,139	\$ 5,554,476	\$ 7,592,586	\$ 24,977,753	\$ 31,935,002

2025 SWM Utility Expenditures

2025 Expenditures	Council District 1	Council District 2	Council District 3	Council District 4	Council District 5	Subtotal	Total Includes Road Fund In-Kind of \$6,957,249 and \$1,489,782 in Pass-Thru Grants
Capital Projects Expenditures	\$ 3,665,286	\$ 846,873	\$ 503,964	\$ 887,321	\$ 8,162,812	\$ 14,066,255	
Non-Capital Services Expenditures	\$ 5,130,781	\$ 2,788,370	\$ 3,839,112	\$ 4,383,549	\$ 6,519,972	\$ 22,661,785	
Total SWM Expenditures	\$ 8,796,067	\$ 3,635,243	\$ 4,343,076	\$ 5,270,869	\$ 14,682,784	\$ 36,728,040	\$ 45,175,071

2025 SWM Utility Expenditures by Revenue Source

Expenditures by Revenue Source	Council District 1	Council District 2	Council District 3	Council District 4	Council District 5	Subtotal	Total Includes Road Fund In-Kind of \$6,957,249 and \$1,489,782 in Pass-Thru Grants
SWM Utility Charges	\$ 6,709,453	\$ 3,062,023	\$ 3,509,894	\$ 4,343,401	\$ 8,353,583	\$ 25,978,354	
Grants	\$ 1,389,475	\$ 301,040	\$ 319,876	\$ 264,471	\$ 5,327,703	\$ 7,602,565	
REET II	\$ 230,670	\$ 87,230	\$ 203,060	\$ 244,640	\$ 334,400	\$ 1,100,000	
Road Fund	\$ 194,965	\$ 102,756	\$ 106,559	\$ 190,496	\$ 324,383	\$ 919,159	
Other – Shared Costs	\$ 271,505	\$ 82,195	\$ 203,686	\$ 227,861	\$ 342,714	\$ 1,127,961	
Total	\$ 8,796,067	\$ 3,635,243	\$ 4,343,076	\$ 5,270,869	\$14,682,784	\$ 36,728,040	\$ 45,175,071

Exhibit 2

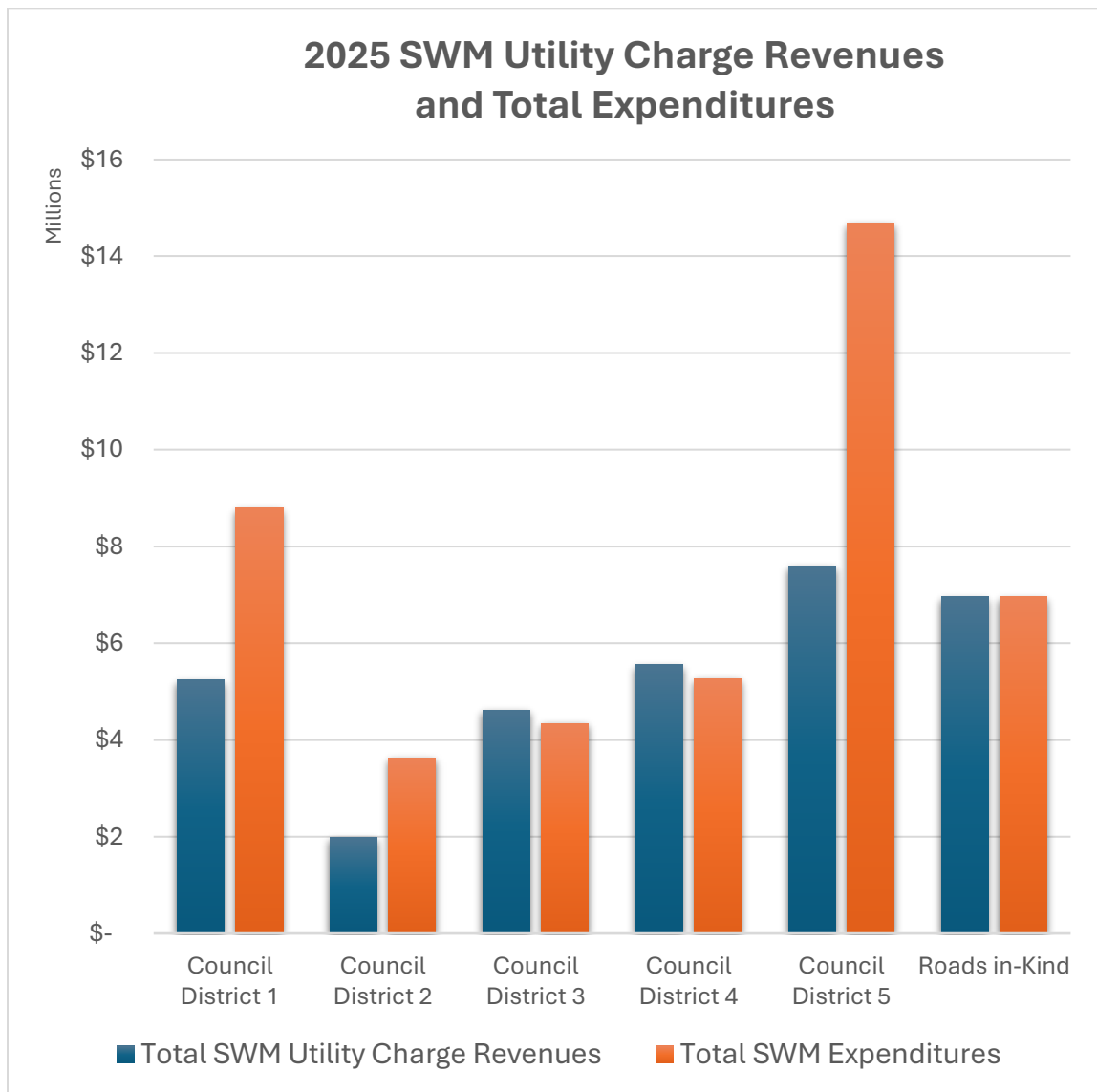


Exhibit 3

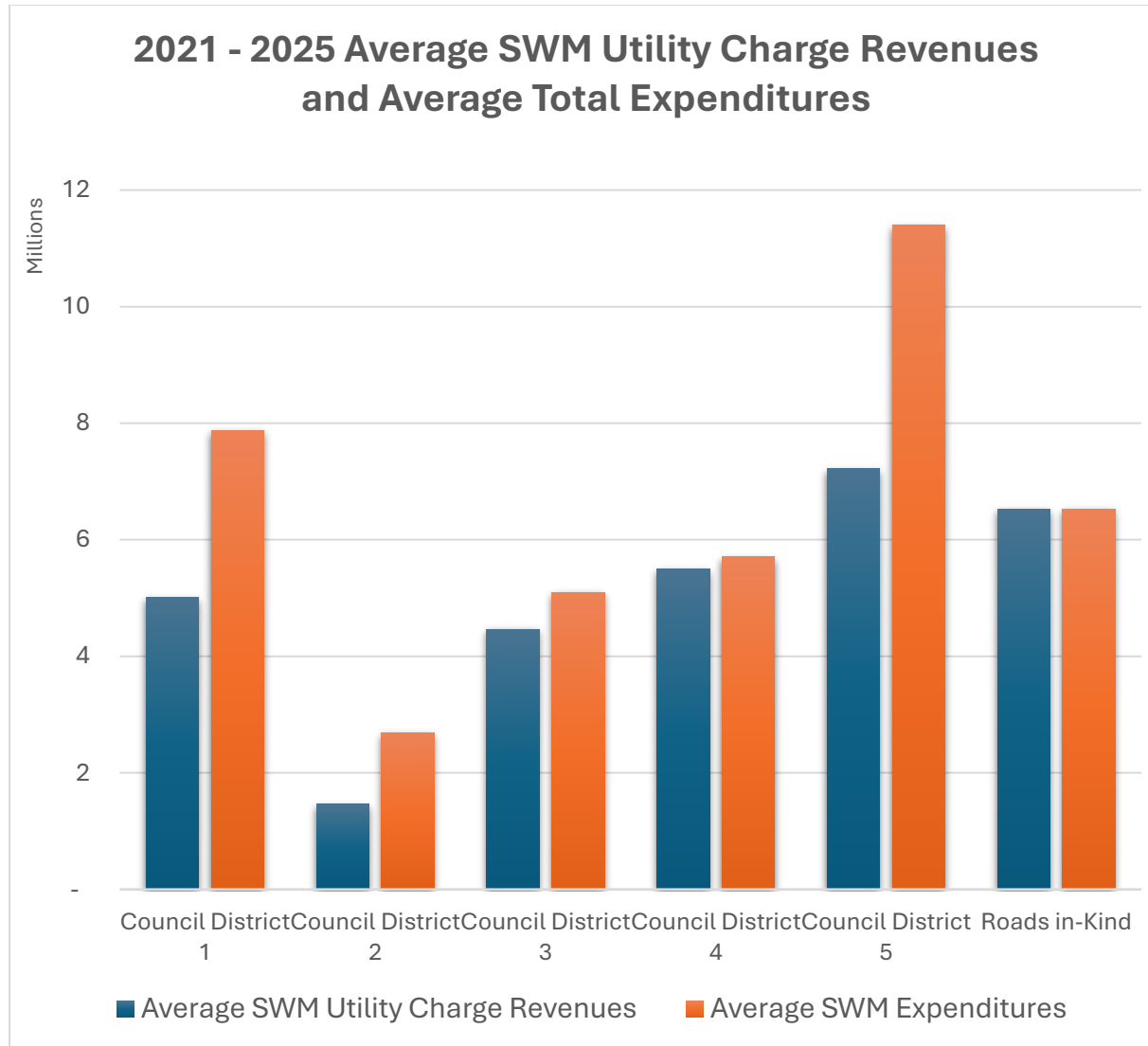


Exhibit 4

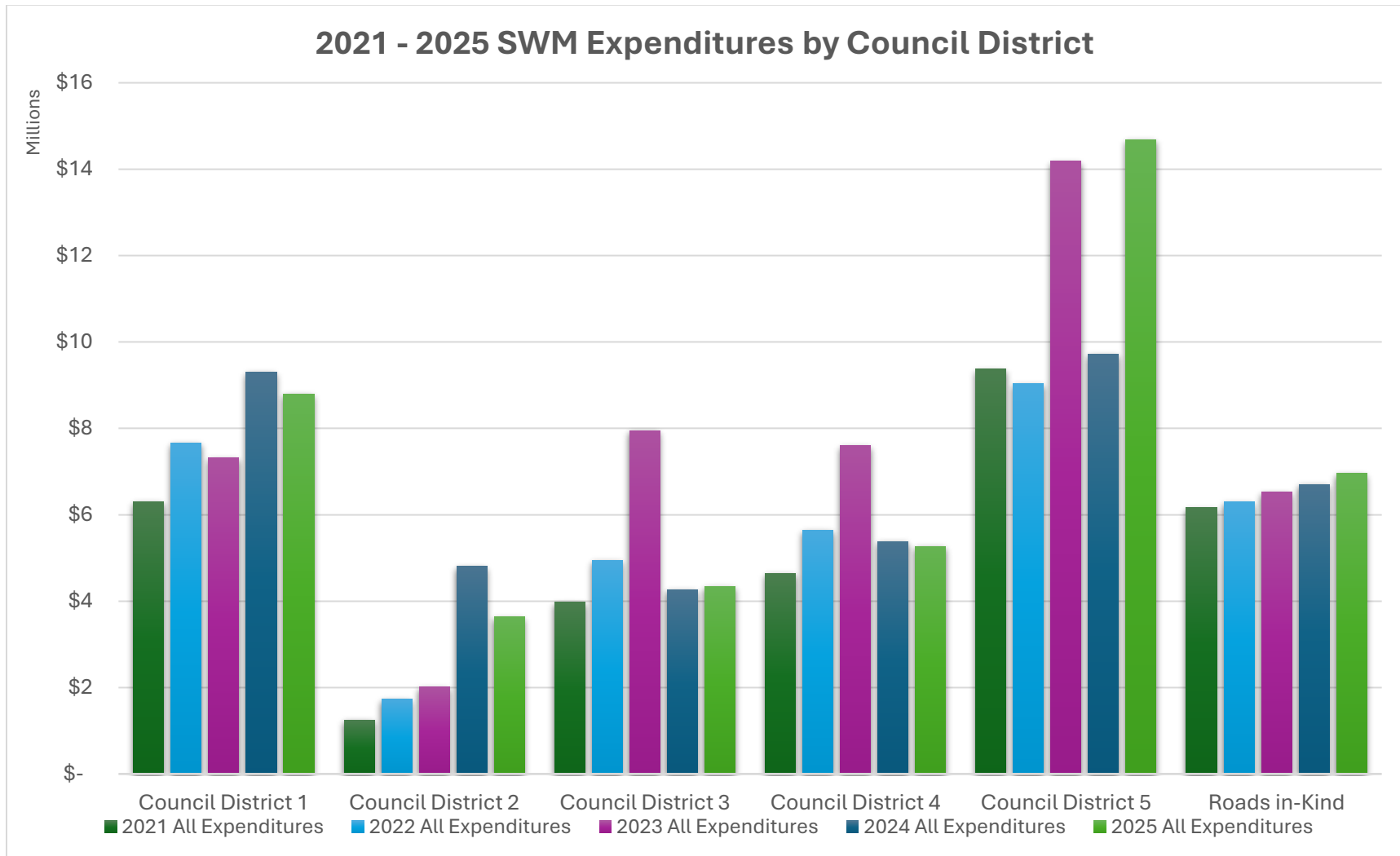


Exhibit 5

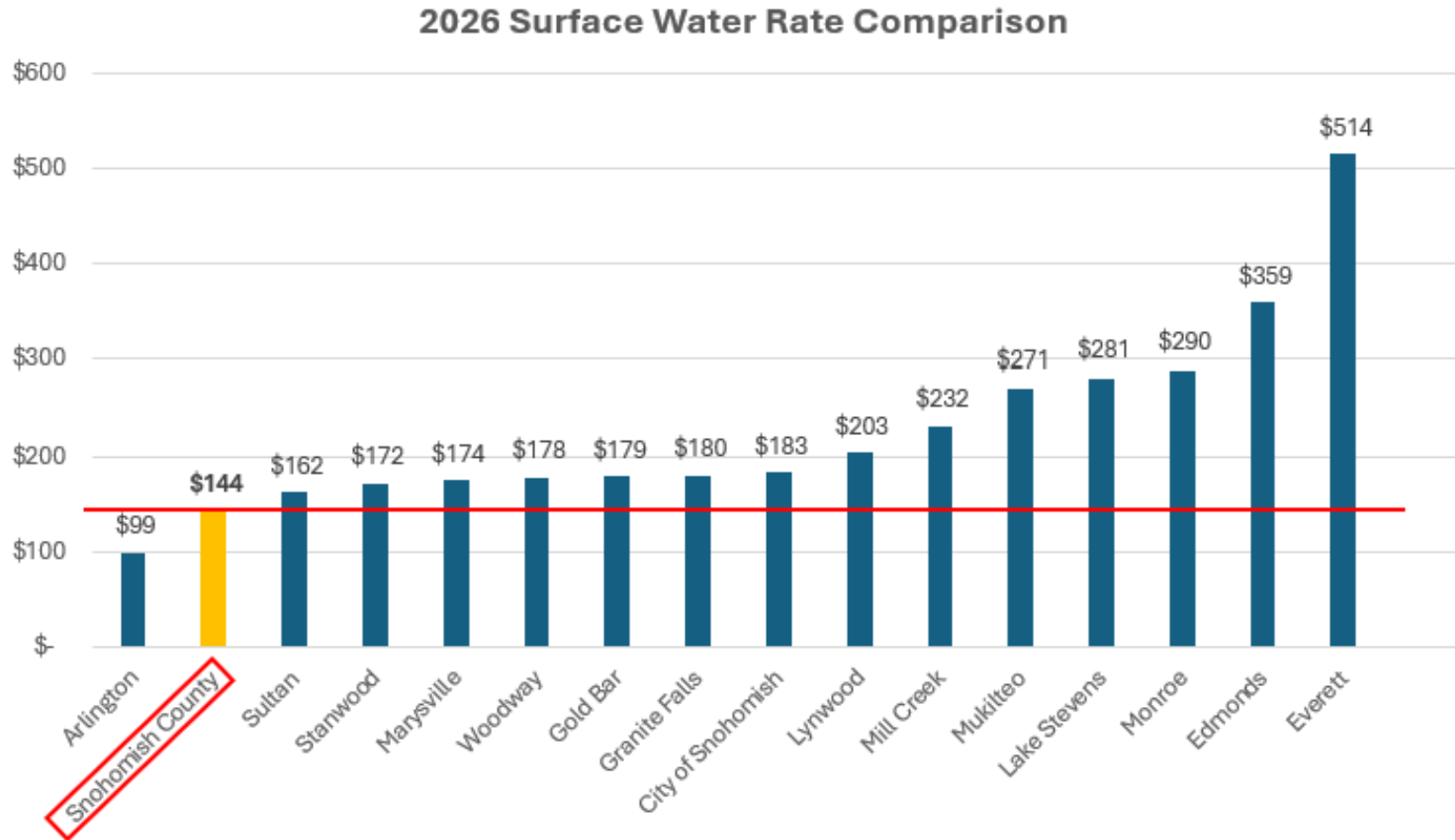
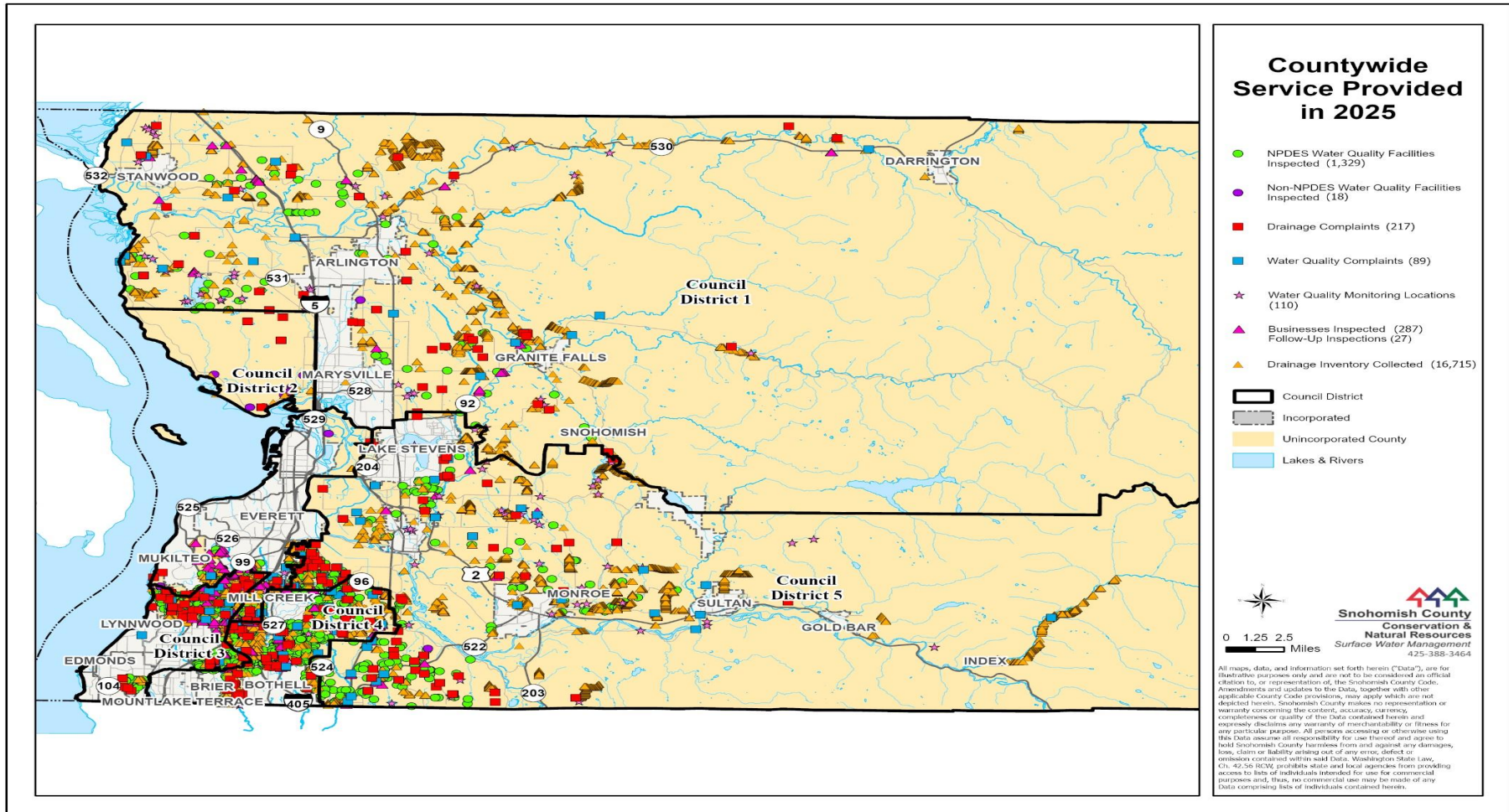


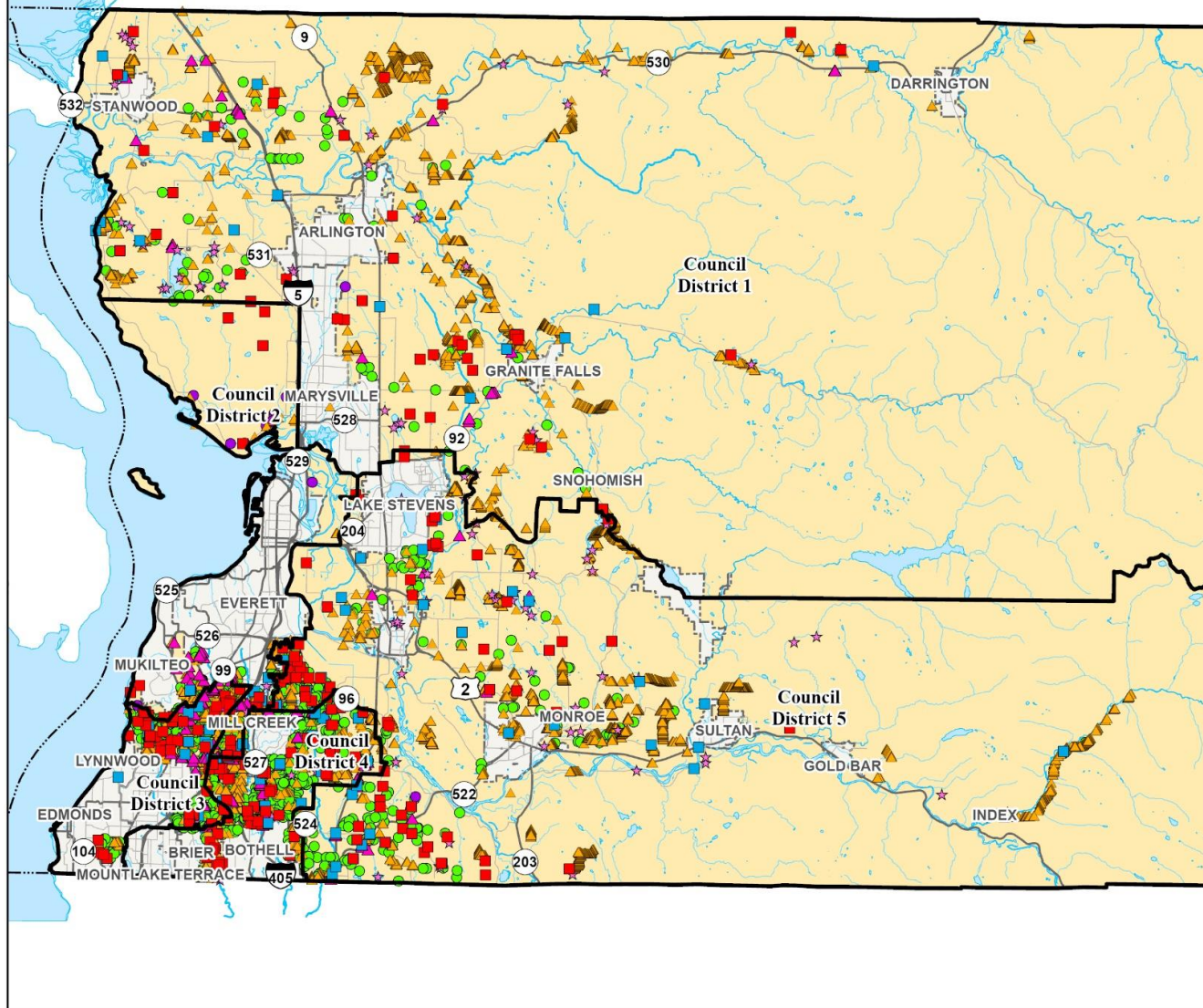
Exhibit 6 2025 Capital Projects and SWM Service Maps




Document Path: \\sno\gis\pww\swm\proj\csp\mxds\YearEndReporting\2025\YearEndReporting2025\YearEndReporting2025.aprx



Countywide Service Provided in 2025



- NPDES Water Quality Facilities Inspected (1,329)
 - Non-NPDES Water Quality Facilities Inspected (18)
 - Drainage Complaints (217)
 - Water Quality Complaints (89)
 - ★ Water Quality Monitoring Locations (110)
 - ▲ Businesses Inspected (287)
Follow-Up Inspections (27)
 - ▲ Drainage Inventory Collected (16,715)
- Council District
 - Incorporated
 - Unincorporated County
 - Lakes & Rivers



Snohomish County
Conservation &
Natural Resources
Surface Water Management
425-388-3464



0 1.25 2.5
Miles

All maps, data, and information set forth herein ("Data"), are for illustrative purposes only and are not to be considered an official citation to, or representation of, the Snohomish County Code. Amendments and updates to the Data, together with other applicable County Code provisions, may apply which are not depicted herein. Snohomish County makes no representation or warranty concerning the content, accuracy, currency, completeness or quality of the Data contained herein and expressly disclaims any warranty of merchantability or fitness for any particular purpose. All persons accessing or otherwise using this Data assume all responsibility for use thereof and agree to hold Snohomish County harmless from and against any damages, loss, claim or liability arising out of any error, defect or omission contained within said Data. Washington State Law, Ch. 42.56 RCW, prohibits state and local agencies from providing access to lists of individuals intended for use for commercial purposes and, thus, no commercial use may be made of any data comprising lists of individuals contained herein.

Countywide Capital Projects in 2025

- In Design (53)
- Constructed or Implemented (15)
- Council District
- Incorporated
- Unincorporated County
- Lakes & Rivers

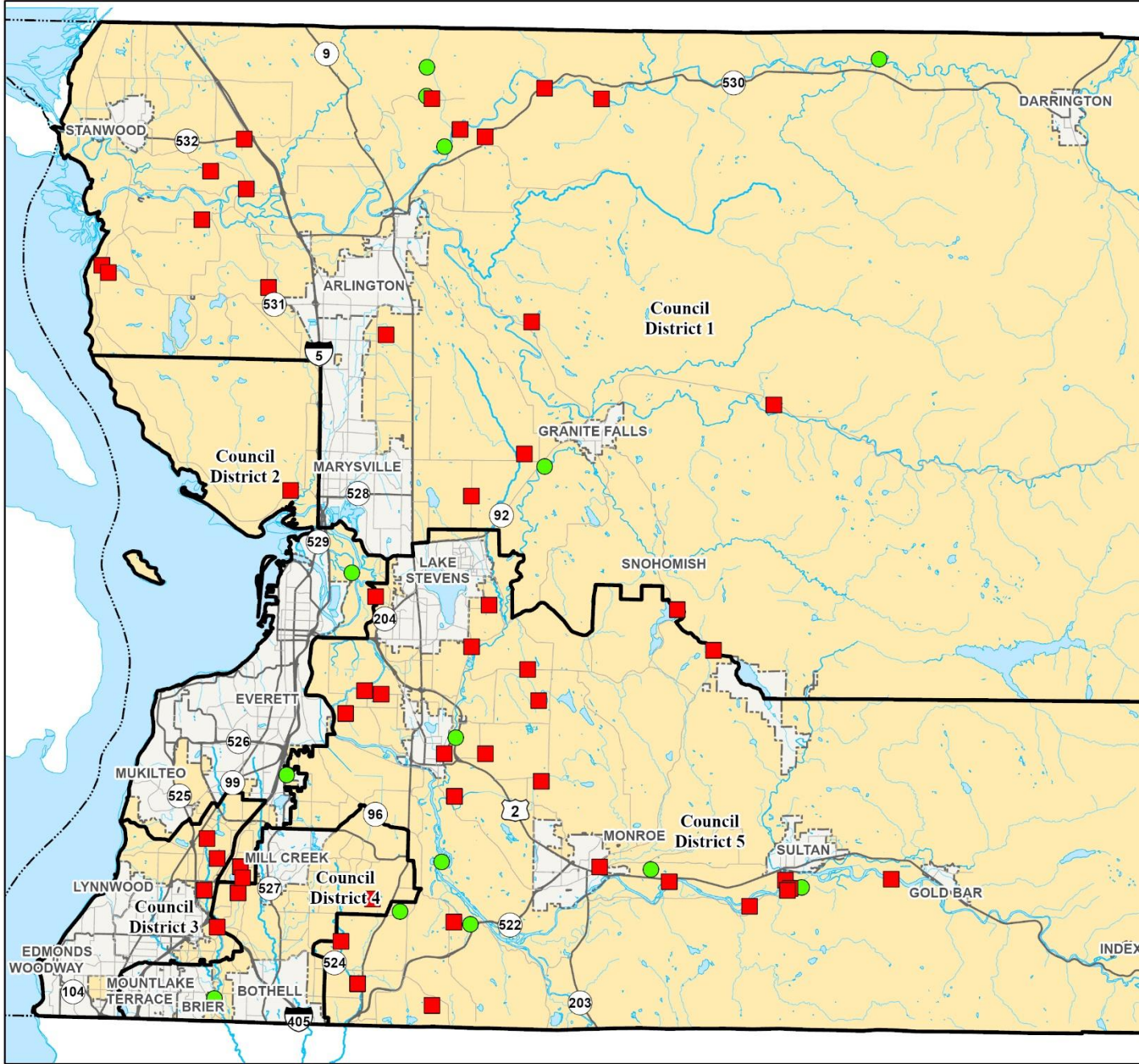






Snohomish County
Conservation & Natural Resources
Surface Water Management
 425-388-3464

All maps, data, and information set forth herein ("Data"), are for illustrative purposes only and are not to be considered an official citation to, or representation of, the Snohomish County Code. Amendments and updates to the Data, together with other applicable County Code provisions, may apply which are not depicted herein. Snohomish County makes no representation or warranty concerning the content, accuracy, currency, completeness or quality of the Data contained herein and expressly disclaims any warranty of merchantability or fitness for any particular purpose. All persons accessing or otherwise using this Data assume all responsibility for use thereof and agree to hold Snohomish County harmless from and against any damages, loss, claim or liability arising out of any error, defect or omission contained within said Data. Washington State Law, Ch. 42-56 RCW, prohibits state and local agencies from providing access to lists of individuals intended for use for commercial purposes and, thus, no commercial use may be made of any Data comprising lists of individuals contained herein.



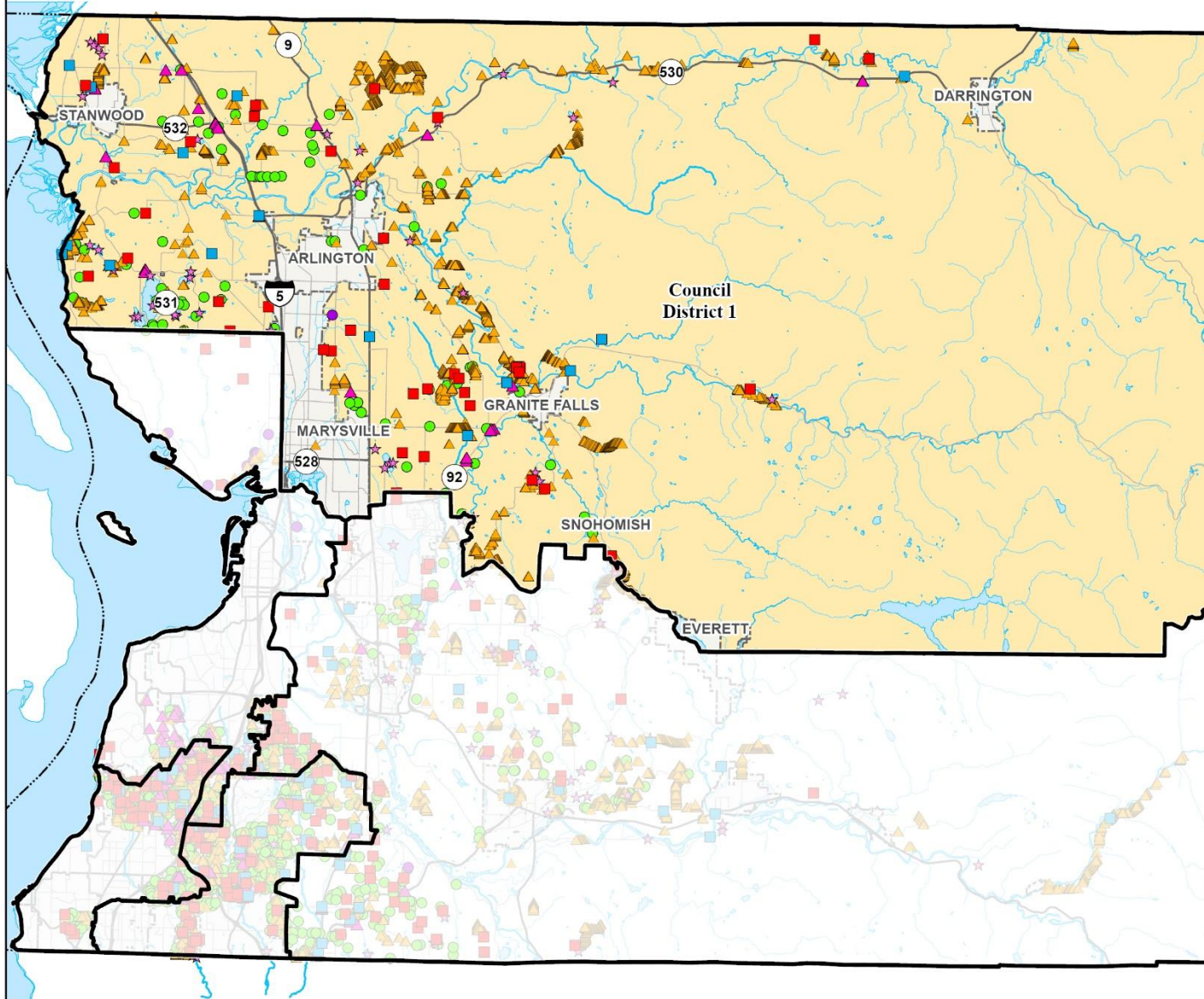
Countywide Service Provided within Council District 1 in 2025

- NPDES Water Quality Facilities Inspected (79)
 - Non-NPDES Water Quality Facilities Inspected (1)
 - Drainage Complaints (39)
 - Water Quality Complaints (16)
 - ★ Water Quality Monitoring Locations (40)
 - ▲ Businesses Inspected (32)
 - ▲ Drainage Inventory Collected (5,641)
- Council District
 - Incorporated
 - Unincorporated County
 - Lakes & Rivers

0 1.25 2.5
Miles


Snohomish County
Conservation &
Natural Resources
Surface Water Management
425-388-3464

All maps, data, and information set forth herein ("Data"), are for illustrative purposes only and are not to be considered an official citation to, or representation of, the Snohomish County Code. Amendments and updates to the Data, together with other applicable County Code provisions, may apply which are not depicted herein. Snohomish County makes no representation or warranty concerning the content, accuracy, currency, completeness or quality of the Data contained herein and expressly disclaims any warranty of merchantability or fitness for any particular purpose. All persons accessing or otherwise using this Data assume all responsibility for use thereof and agree to hold Snohomish County harmless from and against any damages, loss, claim or liability arising out of any error, defect or omission contained within said Data. Washington State Law, Ch. 42.56 RCW, prohibits state and local agencies from providing access to lists of individuals intended for use for commercial purposes and, thus, no commercial use may be made of any Data comprising lists of individuals contained herein.




SWM Capital Projects within Council District 1 in 2025

- In Design (18)
- Constructed or Implemented (5)
- Council District
- Incorporated
- Unincorporated County
- Lakes & Rivers

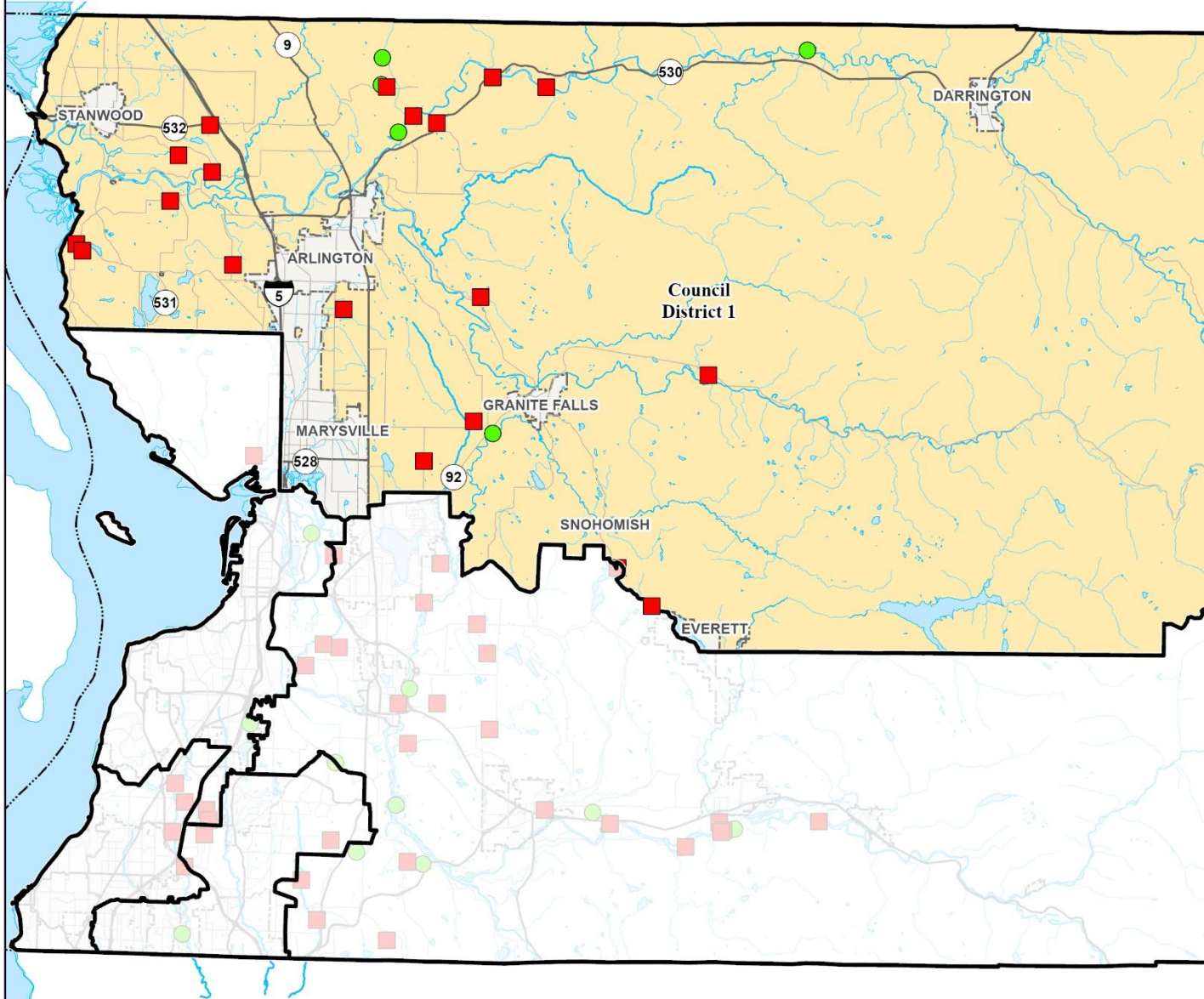


0 1.25 2.5
Miles






Snohomish County
Conservation &
Natural Resources
Surface Water Management
425-388-3464

All maps, data, and information set forth herein ("Data"), are for illustrative purposes only and are not to be considered an official citation to, or representation of, the Snohomish County Code. Amendments and updates to the Data, together with other applicable County Code provisions, may apply which are not depicted herein. Snohomish County makes no representation or warranty concerning the content, accuracy, currency, completeness or quality of the Data contained herein and expressly disclaims any warranty of merchantability or fitness for any particular purpose. All persons accessing or otherwise using this Data assume all responsibility for use thereof and agree to hold Snohomish County harmless from and against any damages, loss, claim or liability arising out of any error, defect or omission contained within said Data. Washington State Law, Ch. 42.56 RCW, prohibits state and local agencies from providing access to lists of individuals intended for use for commercial purposes and, thus, no commercial use may be made of any Data comprising lists of individuals contained herein.



Countywide Service Provided within Council District 2 in 2025


- NPDES Water Quality Facilities Inspected (109)
- Non-NPDES Water Quality Facilities Inspected (14)
- Drainage Complaints (16)
- Water Quality Complaints (8)
- ★ Water Quality Monitoring Locations (4)
- ▲ Businesses Inspected (39)
- ▲ Drainage Inventory Collected (827)
- Council District
- Incorporated
- Unincorporated County
- Lakes & Rivers




Snohomish County
 Conservation & Natural Resources
 Surface Water Management
 425-388-3464


All maps, data, and information set forth herein ("Data"), are for illustrative purposes only and are not to be considered an official citation to, or representation of, the Snohomish County Code. Amendments and updates to the Data, together with other applicable County Code provisions, may apply which are not depicted herein. Snohomish County makes no representation or warranty concerning the content, accuracy, currency, completeness or quality of the Data contained herein and expressly disclaims any warranty of merchantability or fitness for any particular purpose. All persons accessing or otherwise using this Data assume all responsibility for use thereof and agree to hold Snohomish County harmless from and against any damages, loss, claim or liability arising out of any error, defect or omission contained within said Data. Washington State Law, Ch. 42.56 RCW, prohibits state and local agencies from providing access to lists of individuals intended for use for commercial purposes and, thus, no commercial use may be made of any Data comprising lists of individuals contained herein.

SWM Capital Projects within Council District 2 in 2025

- In Design (4)
- Constructed or Implemented (2)
- Council District
- Incorporated
- Unincorporated County
- Lakes & Rivers

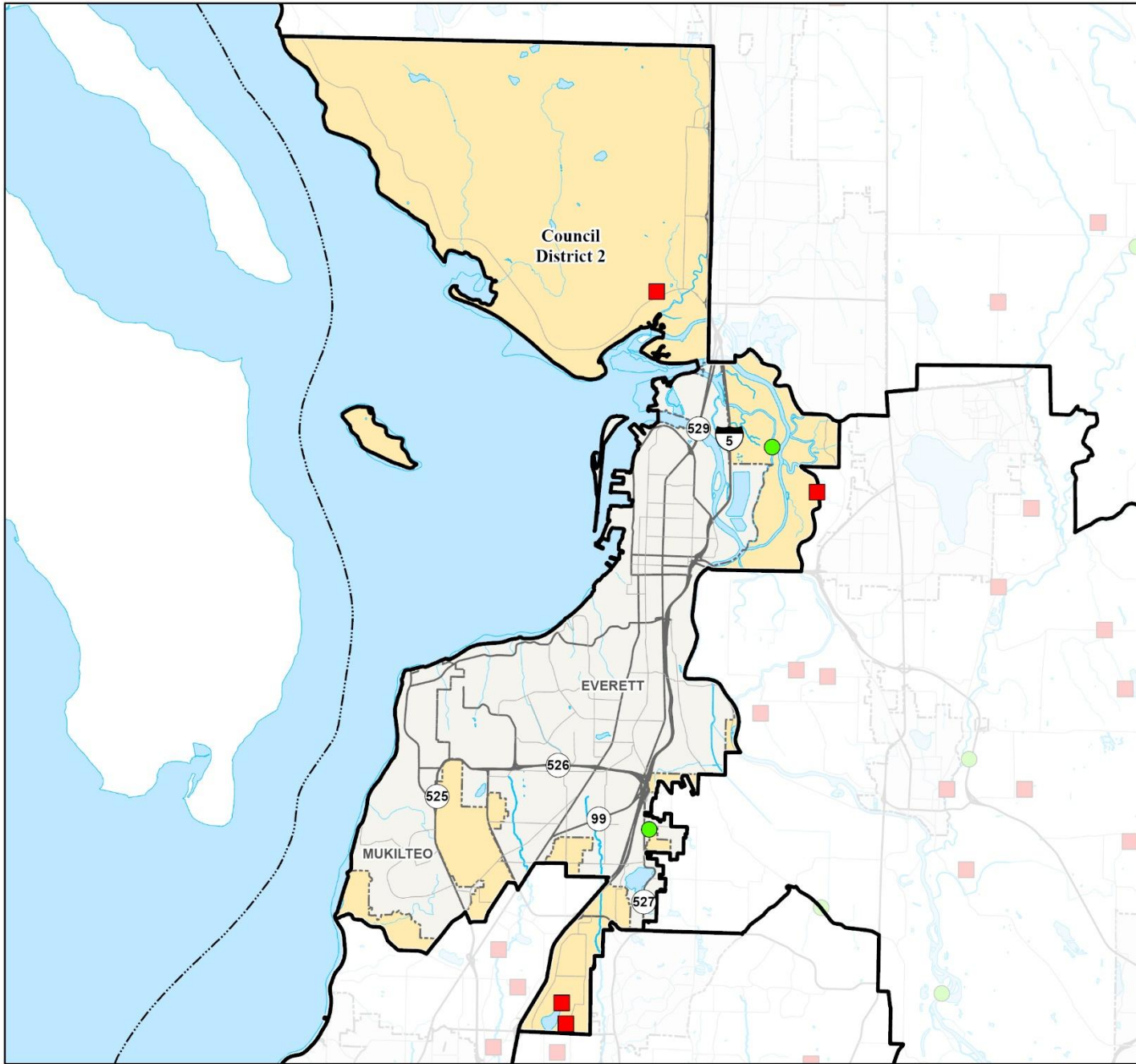


0 0.5 1
Miles



Snohomish County
Conservation &
Natural Resources
Surface Water Management
425-388-3464



All maps, data, and information set forth herein ("Data"), are for illustrative purposes only and are not to be considered an official citation to, or representation of, the Snohomish County Code. Amendments and updates to the Data, together with other applicable County Code provisions, may apply which are not depicted herein. Snohomish County makes no representation or warranty concerning the content, accuracy, currency, completeness or quality of the Data contained herein and expressly disclaims any warranty of merchantability or fitness for any particular purpose. All persons accessing or otherwise using this Data assume all responsibility for use thereof and agree to hold Snohomish County harmless from and against any damages, loss, claim or liability arising out of any error, defect or omission contained within said Data. Washington State Law, Ch. 42-56 RCW, prohibits state and local agencies from providing access to lists of individuals intended for use for commercial purposes and, thus, no commercial use may be made of any Data comprising lists of individuals contained herein.



Countywide Service Provided within Council District 3 in 2025

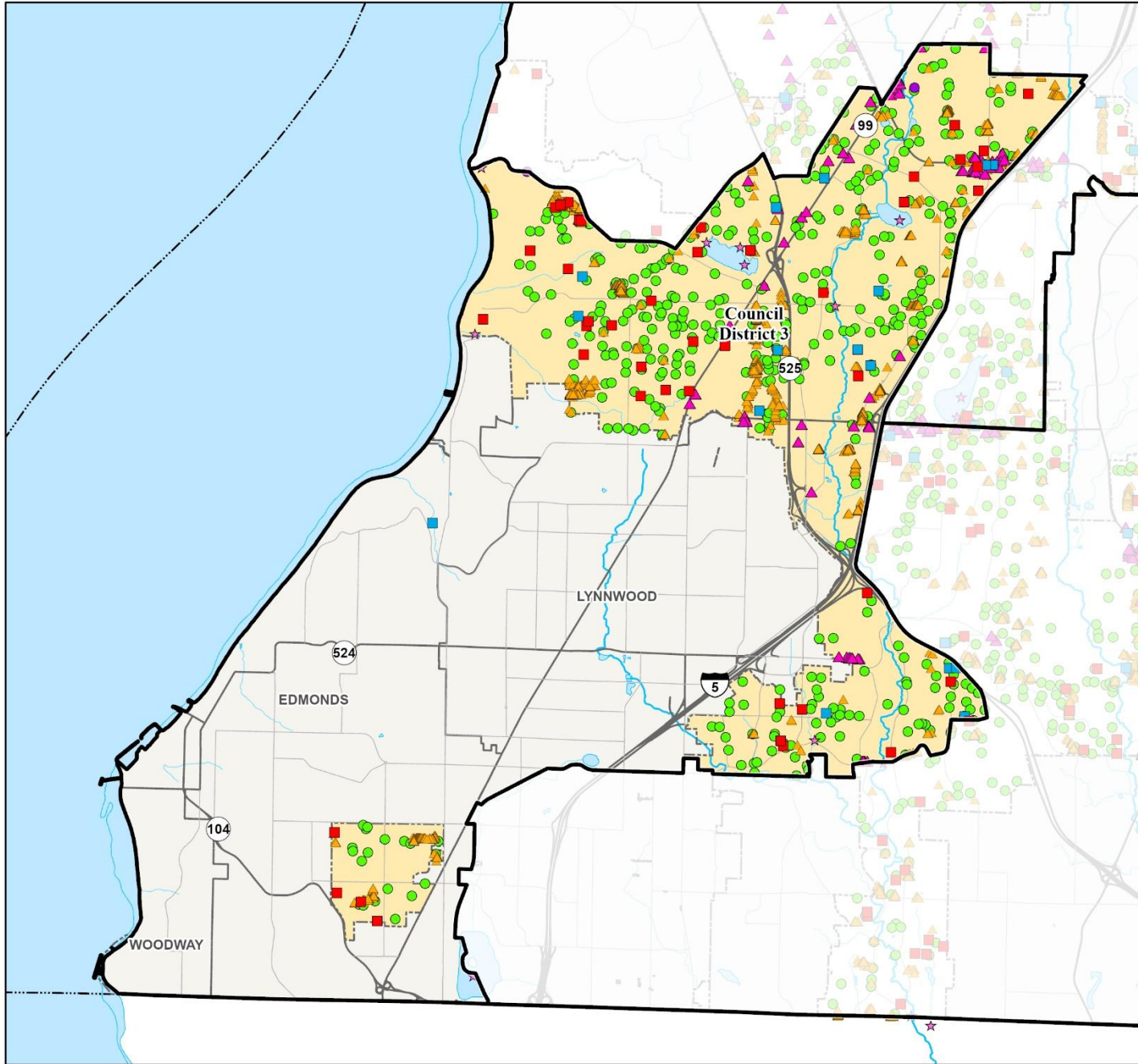
- NPDES Water Quality Facilities Inspected (423)
- Non-NPDES Water Quality Facilities Inspected (2)
- Drainage Complaints (44)
- Water Quality Complaints (17)
- ★ Water Quality Monitoring Locations (9)
- ▲ Businesses Inspected (77)
- ▲ Drainage Inventory Collected (1,819)

- Council District
- Incorporated
- Unincorporated County
- Lakes & Rivers



Snohomish County
Conservation & Natural Resources
 Surface Water Management
 425-388-3464


0 0.25 0.5 Miles

All maps, data, and information set forth herein ("Data"), are for illustrative purposes only and are not to be considered an official citation to, or representation of, the Snohomish County Code. Amendments and updates to the Data, together with other applicable County Code provisions, may apply which are not depicted herein. Snohomish County makes no representation or warranty concerning the content, accuracy, currency, completeness or quality of the Data contained herein and expressly disclaims any warranty of merchantability or fitness for any particular purpose. All persons accessing or otherwise using this Data assume all responsibility for use thereof and agree to hold Snohomish County harmless from and against any damages, loss, claim or liability arising out of any error, defect or omission contained within said Data. Washington State Law, Ch. 42.56 RCW, prohibits state and local agencies from providing access to lists of individuals intended for use for commercial purposes and, thus, no commercial use may be made of any Data comprising lists of individuals contained herein.




SWM Capital Projects within Council District 3 in 2025

- In Design (4)
- Constructed or Implemented (0)
- Council District
- Incorporated
- Unincorporated County
- Lakes & Rivers



0 0.25 0.5
Miles





Snohomish County
Conservation &
Natural Resources
Surface Water Management
425-388-3464

All maps, data, and information set forth herein ("Data"), are for illustrative purposes only and are not to be considered an official citation to, or representation of, the Snohomish County Code. Amendments and updates to the Data, together with other applicable County Code provisions, may apply which are not depicted herein. Snohomish County makes no representation or warranty concerning the content, accuracy, currency, completeness or quality of the Data contained herein and expressly disclaims any warranty of merchantability or fitness for any particular purpose. All persons accessing or otherwise using this Data assume all responsibility for use thereof and agree to hold Snohomish County harmless from and against any damages, loss, claim or liability arising out of any error, defect or omission contained within said Data. Washington State Law, Ch. 42-56 RCW, prohibits state and local agencies from providing access to lists of individuals intended for use for commercial purposes and, thus, no commercial use may be made of any Data comprising lists of individuals contained herein.

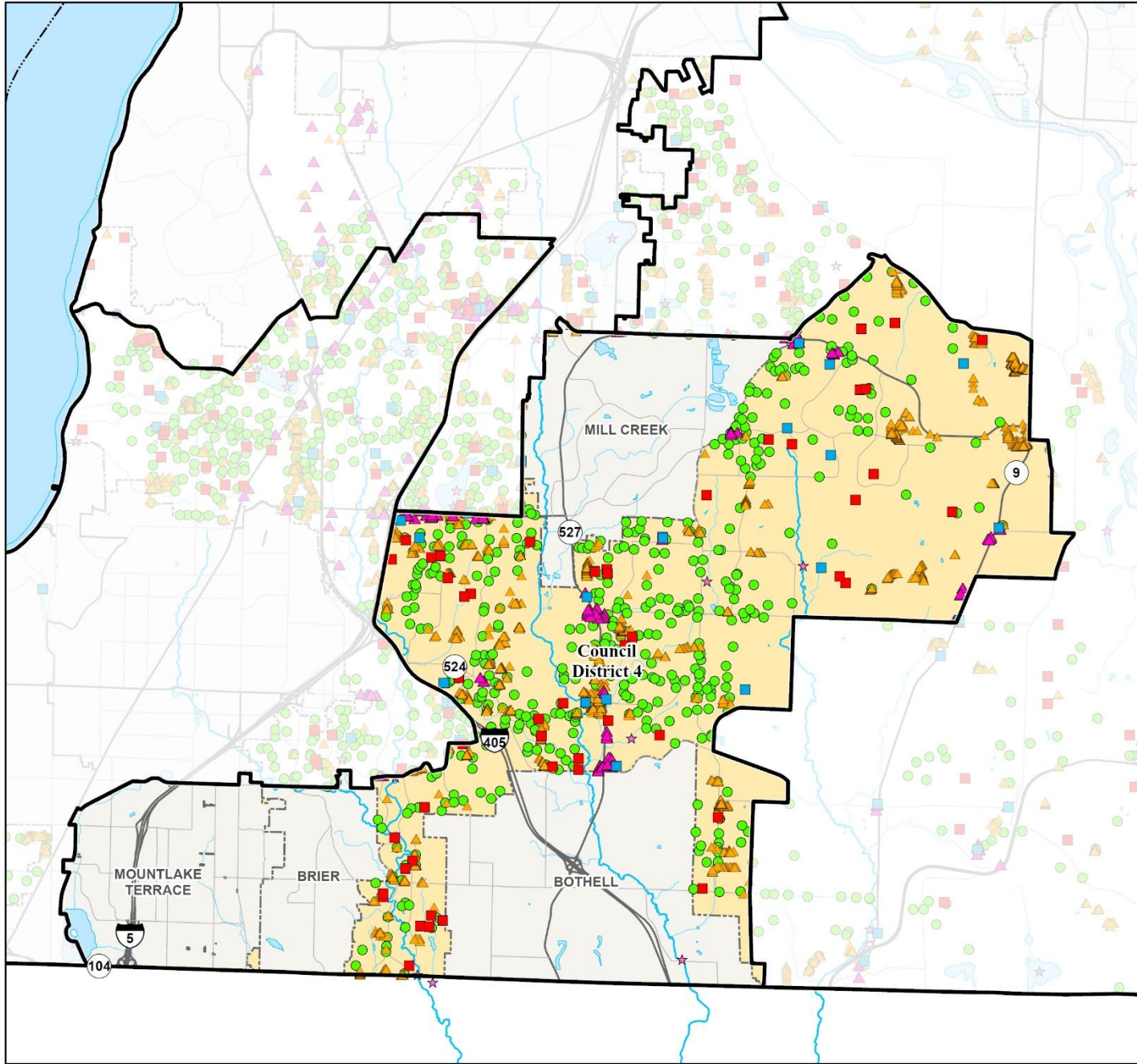
Countywide Service Provided within Council District 4 in 2025

- NPDES Water Quality Facilities Inspected (445)
- Non-NPDES Water Quality Facilities Inspected (0)
- Drainage Complaints (50)
- Water Quality Complaints (19)
- ★ Water Quality Monitoring Locations (7)
- ▲ Businesses Inspected (111)
- ▲ Drainage Inventory Collected (2,938)

- Council District
- Incorporated
- Unincorporated County
- Lakes & Rivers





 0 0.33 0.65 Miles


All maps, data, and information set forth herein ("Data"), are for illustrative purposes only and are not to be considered an official citation to, or representation of, the Snohomish County Code. Amendments and updates to the Data, together with other applicable County Code provisions, may apply which are not depicted herein. Snohomish County makes no representation or warranty concerning the content, accuracy, currency, completeness or quality of the Data contained herein and expressly disclaims any warranty of merchantability or fitness for any particular purpose. All persons accessing or otherwise using this Data assume all responsibility for use thereof and agree to hold Snohomish County harmless from and against any damages, loss, claim or liability arising out of any error, defect or omission contained within said Data. Washington State Law, Ch. 42.56 RCW, prohibits state and local agencies from providing access to lists of individuals intended for use for commercial purposes and, thus, no commercial use may be made of any Data comprising lists of individuals contained herein.



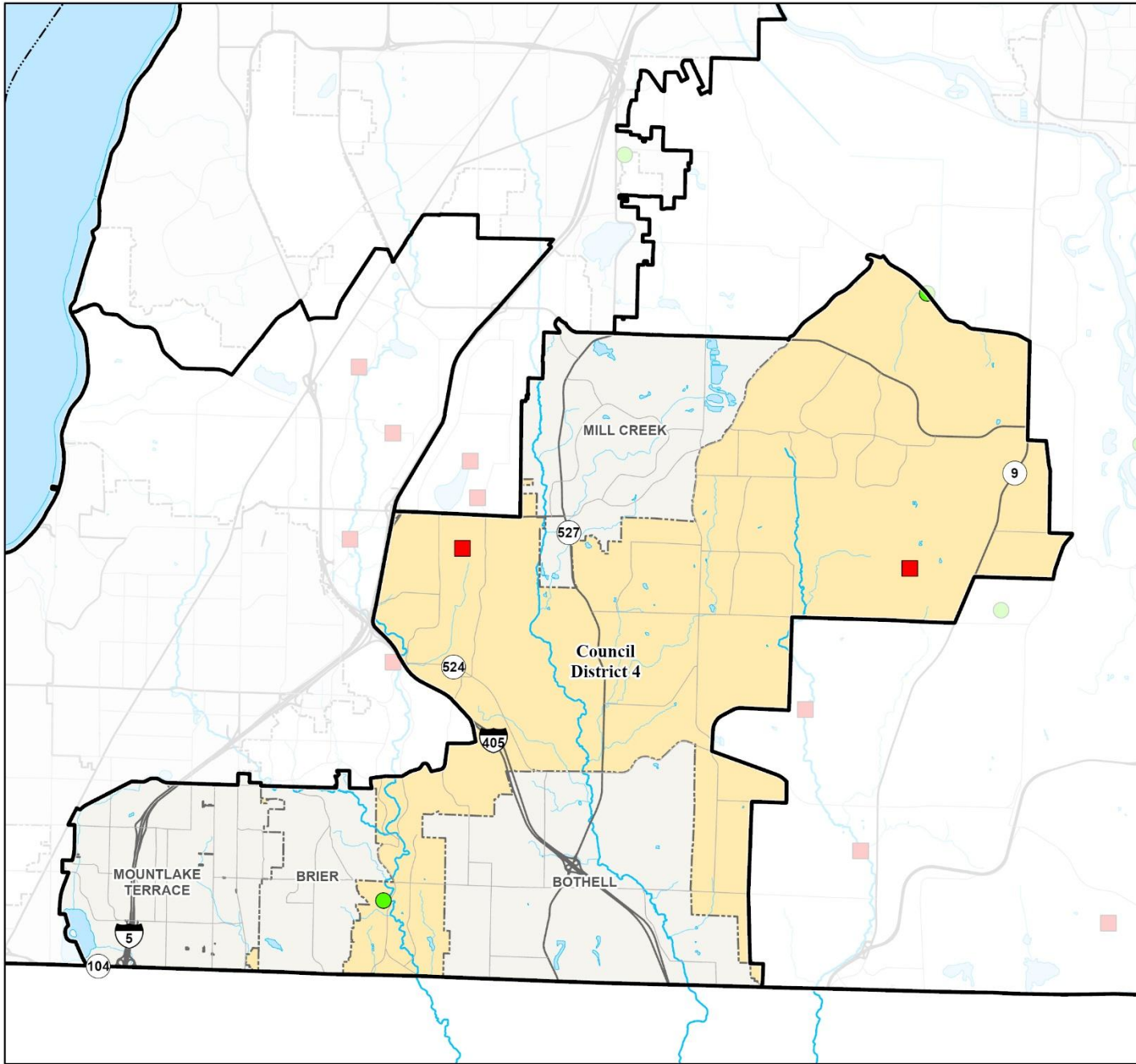
SWM Capital Projects within Council District 4 in 2025

- In Design (2)
- Constructed or Implemented (1)
- Council District
- Incorporated
- Unincorporated County
- Lakes & Rivers



Snohomish County
Conservation & Natural Resources
Surface Water Management
 425-388-3464

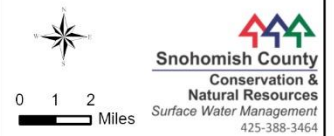
0 0.33 0.65
 Miles

All maps, data, and information set forth herein ("Data"), are for illustrative purposes only and are not to be considered an official citation to, or representation of, the Snohomish County Code. Amendments and updates to the Data, together with other applicable County Code provisions, may apply which are not depicted herein. Snohomish County makes no representation or warranty concerning the content, accuracy, currency, completeness or quality of the Data contained herein and expressly disclaims any warranty of merchantability or fitness for any particular purpose. All persons accessing or otherwise using this Data assume all responsibility for use thereof and agree to hold Snohomish County harmless from and against any damages, loss, claim or liability arising out of any error, defect or omission contained within said Data. Washington State Law, Ch. 42.56 RCW, prohibits state and local agencies from providing access to lists of individuals intended for use for commercial purposes and, thus, no commercial use may be made of any Data comprising lists of individuals contained herein.



Countywide Service Provided within Council District 5 in 2025


- NPDES Water Quality Facilities Inspected (273)
- Non-NPDES Water Quality Facilities Inspected (1)
- Drainage Complaints (66)
- Water Quality Complaints (29)
- ★ Water Quality Monitoring Locations (48)
- ▲ Businesses Inspected (28)
- ▲ Drainage Inventory Collected (5,488)
- Council District
- Incorporated
- Unincorporated County
- Lakes & Rivers



All maps, data, and information set forth herein ("Data"), are for illustrative purposes only and are not to be considered an official citation to, or representation of, the Snohomish County Code. Amendments and updates to the Data, together with other applicable County Code provisions, may apply which are not depicted herein. Snohomish County makes no representation or warranty concerning the content, accuracy, currency, completeness or quality of the Data contained herein and expressly disclaims any warranty of merchantability or fitness for any particular purpose. All persons accessing or otherwise using this Data assume all responsibility for use thereof and agree to hold Snohomish County harmless from and against any damages, loss, claim or liability arising out of any error, defect or omission contained within said Data. Washington State Law, Ch. 42.56 RCW, prohibits state and local agencies from providing access to lists of individuals intended for use for commercial purposes and, thus, no commercial use may be made of any Data comprising lists of individuals contained herein.

SWM Capital Projects within Council District 5 in 2025

- In Design (25)
- Constructed or Implemented (7)
- Council District
- Incorporated
- Unincorporated County
- Lakes & Rivers



Snohomish County
Conservation & Natural Resources
Surface Water Management
425-388-3464

All maps, data, and information set forth herein ("Data"), are for illustrative purposes only and are not to be considered an official citation to, or representation of, the Snohomish County Code. Amendments and updates to the Data, together with other applicable County Code provisions, may apply which are not depicted herein. Snohomish County makes no representation or warranty concerning the content, accuracy, currency, completeness or quality of the Data contained herein and expressly disclaims any warranty of merchantability or fitness for any particular purpose. All persons accessing or otherwise using this Data assume all responsibility for use thereof and agree to hold Snohomish County harmless from and against any damages, loss, claim or liability arising out of any error, defect or omission contained within said Data. Washington State Law, Ch. 42.56 RCW, prohibits state and local agencies from providing access to lists of individuals intended for use for commercial purposes and, thus, no commercial use may be made of any Data comprising lists of individuals contained herein.